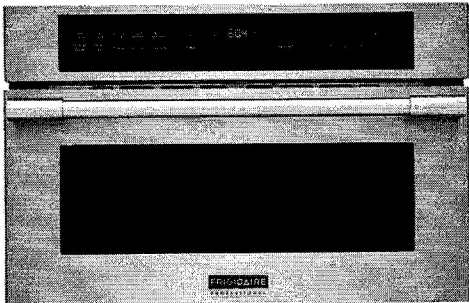


FPMO3077TF

Frigidaire Professional
30" Built-In Convection
Microwave Oven with
Drop-Down Door

AVAILABLE
COLORS



SIGNATURE FEATURES



Smudge-Proof™ Stainless Steel
Resists fingerprints and cleans easily.

PRODUCT DIMENSIONS

Height	19-5/8"
Width	29-13/16"
Depth	22-3/8"

MORE EASY-TO-USE
FEATURES

- PowerSense™ Broil & Grill**
Grill fresh or frozen pizza at the touch of a button.
- PowerSense™ Auto Defrost**
Take the guesswork out of defrosting meat, poultry, or fish with PowerSense Auto Defrost.
- Adjustable Timer**
Now you can adjust the cooking time of your dish while its cooking. The adjustable timer allows you to add 30 seconds on the timer.
- Drop Down Door**
Faster, easier access to what you are cooking with Drop Down Door configuration.
- Keep Warm**
Consistently keep your dishes warm, for up to 90 minutes, until everything and everyone is ready.
- PowerBright™ LED Lighting**
See the power. See the results in action. LED interior microwave light stays on while your dish cooks.
- PowerPlus™ 2-in-1 Convection Oven or Microwave**
Get the great tasting results of a conventional convection oven combined with the speed of microwave technology with the PowerPlus™ 2-in-1 Convection Microwave Oven.


RL 259

General Specifications

Shipping Weight (lbs)	90
Power Type	Electric
Size	30"
Installation Type	Built-In
Collection	Frigidaire Professional
Controls	
Add 30 Seconds	Yes
Power Levels	High / 1-9
Touch Pad Buttons	25
Display Type	LED
Display Color	Blue
Exterior	
Exterior Finish	Stainless Steel
Capacities	
Total Capacity - Cu. Ft.	1.6
Auto Feature Specifications	
Auto Defrost Options	3
Melt/Soften Options	4
Auto Reheat Options	5
Snack Menu Options	3

Microwave Oven Specifications

Frequency (MHZ)	2450
Turntable Diameter	14-3/16"
Watts	1750
Dimensions: Cut-Out	
Cut Out Depth	22"
Cut Out Height	17-3/4" - 18"
Cut Out Width	28" - 28-3/8"
Sensor Feature Specifications	
Reheat Button	Yes - 5
Cook Options	Yes - 5
User Modes	
Language (Eng/Fr/Sp)	Eng / Fr
Demo Mode	Yes
Dimensions: Exterior	
Depth	22-5/8"
Height	19-5/8"
Width	29-13/16"
Electrical Specifications	
Amps @ 120 Volts	15.5
Connected Load @ 120V	1.1
Voltage Rating	120V / 60Hz



Note: For planning purposes only. Always consult local and national electric, gas and plumbing codes. Refer to Product Installation Guide for detailed installation instructions on the web at frigidaire.com / frigidaire.ca.
Specifications subject to change. Accessories information available on the web at frigidaire.com / frigidaire.ca

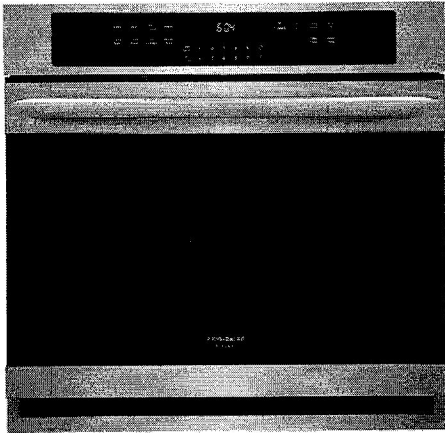
RL 259

FRIGIDAIRE
GALLERY

FGEW3066UF

Frigidaire Gallery 30"
Single Electric Wall
Oven

Smudge-Proof
STAINLESS STEEL



AVAILABLE
COLORS



Black
Stainless
Steel

PRODUCT DIMENSIONS

Height	29"
Width	30"
Depth	24-3/4"

MORE EASY-TO-USE
FEATURES

Cleanup is easy with Hidden Bake

Lower heating elements are beneath the oven floor, making for a smooth surface that is easy to clean.

Smudge-Proof® Stainless Steel
Resists fingerprints and cleans easily.

Our Largest Capacity Oven
Cook more at once with 5.1 cubic feet of oven capacity.

Easily access dishes with our glide rack

Rack easily glides in and out allowing you to access dishes from your oven.

Oven Rack Handles

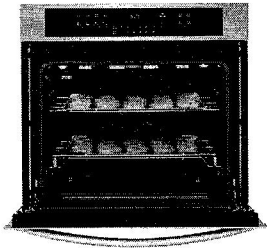
Oven racks are designed with space for you to easily pull out the racks, even when wearing an oven mitt.

Easy to Clean with Self-Cleaning

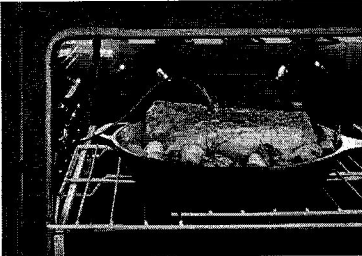
Your oven cleans itself - so you don't have to. Self clean options available in 2, 3, and 4-hour cycles.

Vari-Broil™ Temperature Control
Allows you to choose between two heat levels.

SIGNATURE FEATURES



Faster, More Even Baking Results with True Convection
Get faster, more even multi-rack baking in both ovens with a powerful convection fan and third heating element that evenly circulates hot air throughout the oven.



Effortless™ Temperature Probe
The Effortless™ Temperature Probe detects and alerts when the desired finished cooking temperature has been reached and automatically switches to the keep warm setting.



Quick Preheat
Preheat in just a few minutes.¹

FRIGIDAIRE
FIT PROMISE

Frigidaire Fit Promise
We promise that your new 27" or 30" Frigidaire® single wall oven will fit your existing cabinet cutout of the same width and configuration, or we will reimburse you for modification costs.²

CERTIFICATIONS

ADA Compliant



Star-K® Certified (Sabbath Mode)

frigidaire.com/frigidaire.ca


RL 259

FGEW3066UF
Frigidaire Gallery 30" Single
Electric Wall Oven



General Specifications	
Shipping Weight (lbs)	125
PROP 65 Label	No
Frigidaire Fit Promise	Yes
Power Type	Electric
Size	30"
Installation Type	Built-In
Collection	Frigidaire Gallery
Capacities	
Oven 1 Capacity	5.1
Electrical Specifications	
Power Supply Connection Location	Left Rear Bottom
Voltage Rating	240V / 208V 60Hz
Connected Load (kW Rating) @ 240V	4.5 / 3.4
Minimum Circuit Required (Amps)	20A
Certifications & Approvals	
Sabbath Mode (Star-K® Certified)	Yes
ADA Compliant	Yes
Agency Approval	UL/CSA
Oven Specifications	
Oven 1 Type	Main
Oven 1 Bake	2200 Watts
Oven 1 Baking System	True Hidden Bake
Oven 1 Broil	6 pass 4000 Watts
Oven 1 Broiling System	Variable (400°F to 550°F)
Oven 1 Convection	2500 Watts
Oven 1 Interior Lighting	2 Halogen
Oven 1 Rack Configuration	2 HD Handle 1 Offset
Oven 1 Rack Positions	6 positions
Oven 1 Cleaning System	Self Clean w/Steam Clean Option
Oven Window	XL Window
Oven 1 Convection System	Single Fan
Installation Type	
Under Counter Approved	Approved

Exterior	
Control Panel Finish	Metal Stainless Steel
Door Finish	Stainless Steel
Handle Color	Stainless Steel
Exterior Finish	Smudge-Proof™ Stainless Steel
Internal Specifications	
Oven 1 Interior Height	18-5/8"
Oven 1 Interior Width	24-1/8"
Oven 1 Interior Depth	19-1/2"
Oven 1 Interior Color	Midnight Black
Cut-Out Dimensions	
Cut-Out Height	27-1/4" - 28-1/4"
Cut-Out Width	28-1/2" - 29"
Cut-Out Depth	24"
Cooking Controls	
Bake	Yes
Broil	Variable
Chicken Nugget Button	No
Convection Conversion	Yes
Keep Warm	Yes
Pizza Button	No
Quick Preheat	Yes
Self-Clean	2 3 4 Hours
Interface	Membrane
Oven Light	Yes
Lockout	Yes
Temperature Probe	Yes
Add-a-Minute	No
Start Time	Multiple Functions
Timer	Yes
Cook Duration	Yes
Numerical Keypad	Yes
Exterior Dimensions	
Height	29"
Width	30"
Depth	24-3/4"
Depth (with Door 90° Open)	45-3/4"

 **Note:** For planning purposes only. Always consult local and national electric, gas and plumbing codes. Refer to Product Installation Guide for detailed installation instructions on the web at frigidaire.com / frigidaire.ca.
Specifications subject to change. Accessories information available on the web at frigidaire.com / frigidaire.ca



USA • 10200 David Taylor Drive • Charlotte, NC 28262 • 1-800-FRIGIDAIRE • frigidaire.com
CANADA • 5855 Terry Fox Way • Mississauga, ON L5V 3E4 • 1-800-265-8352 • frigidaire.ca

FGEW3066UF
©2017 Electrolux Home Products, Inc.

RL 259

KitchenAid® 30" (76.2 CM) ELECTRIC INDUCTION COOKTOP

PRODUCT MODEL NUMBERS

KICU500X

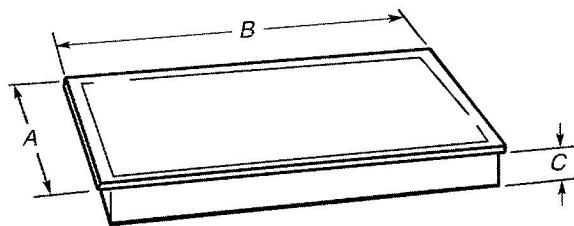
ELECTRICAL REQUIREMENTS:

To properly install your cooktop, you must determine the type of electrical connection you will be using and follow the instructions provided for it here.

- A 4-wire or 3-wire, single phase, 240 volt, 60 Hz., AC only electrical supply is required on a separate, 40-amp circuit (30" [76.2 cm] models), fused on both sides of the line.
- The cooktop should be connected directly to the junction box through flexible, armored or nonmetallic sheathed, copper cable. The flexible, armored cable extending from the fuse box or circuit breaker box should be connected directly to the junction box.
- Locate the junction box to allow as much slack as possible between the junction box and the cooktop so that the cooktop can be moved if servicing becomes necessary in the future.
- Do not cut the conduit. The length of conduit provided is for serviceability of the cooktop.
- A UL listed or CSA approved conduit connector must be provided at each end of the power supply cable (at the cooktop and at the junction box). A listed conduit connector is already provided at the cooktop.

PRODUCT DIMENSIONS

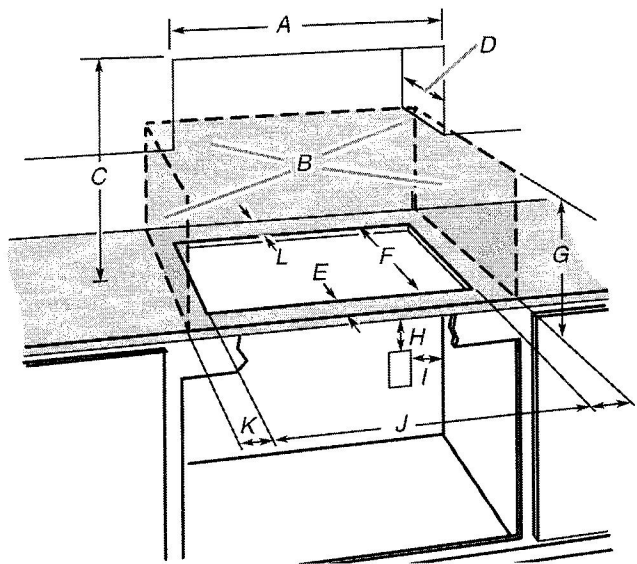
30" (76.2 cm) Cooktops



Model KICU500
A. 21 ⁵ / ₁₆ " (54.1 cm)
B. 30 ³ / ₄ " (78.2 cm)
C. 2 ³ / ₈ " (6.0 cm)

CABINET DIMENSIONS

IMPORTANT: If installing a range hood or microwave hood combination above the range, follow the range hood or microwave hood combination installation instructions for dimensional clearances above the cooktop surface.



- A. 29¹/₂" (75.0 cm) on 30" (76.2 cm) models
- B. Combustible area above countertop (shown by dashed box above)
- C. 30" (76.2 cm) minimum clearance between top of cooktop platform and bottom of uncovered wood or metal cabinet (24" [61 cm] minimum clearance if bottom of wood or metal cabinet is covered by not less than 1/4" [0.6 cm] flame retardant millboard covered with not less than No. 28 MSG sheet steel, 0.015" [0.04 cm] stainless steel, or 0.024" [0.06 cm] aluminum or 0.020" [0.05 cm] copper)
- D. 13" (33.0 cm) recommended upper cabinet depth
- E. 2" (5.1 cm)
- F. 19⁵/₁₆" (49.0 cm)
- G. 18" (45.7 cm) minimum clearance from upper cabinet to countertop within minimum horizontal clearances to cooktop
- H. Junction box or outlet; 12" (30.5 cm) minimum from bottom of countertop
- I. Junction box or outlet; 10" (25.4 cm) from right-hand side of cabinet
- J. 29¹/₂" (75.0 cm) on 30" (76.2 cm) models
- K. 1" (2.5 cm) minimum distance to nearest left and right side combustible surface above cooktop
- L. 1" (2.5 cm) minimum clearance between back wall and countertop

NOTES: After you make the countertop cutout, some installations may require notching down the base cabinet side walls to clear the cooktop base. To avoid this modification, use a base cabinet with sidewalls wider than the cutout.

If cabinet has a drawer, a 5¹/₈" (13 cm) depth clearance from the countertop to the top of the drawer (or other obstruction) in base cabinet is required.

RL 259