



Tel: (613) 748-0432
Fax: (613) 748-0355

A Division of the S&S Bolton Group
www.ssbolton.com

Estimate No#: OR3569 Rev.01

Customer Copy

(2019)
↑

Builder: VALECRAFT HOMES LTD.
Project: Embrun - Place St Thomas
Lot: Singles Ph 3
Closing Date: 0012
12/22/2020

Salesperson: Jason Thompson (OR)
Date: 04/08/2020

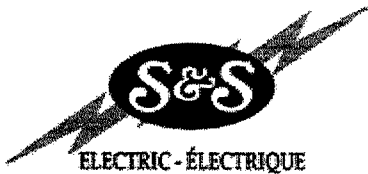
Location	Qty	Product / Installation Details	Plan Code	Unit Price	Customer Total
Great Room	1.00	(4) Port Plate - (1) Phone CAT5e & (2) Data CAT5e & (1) Cable RG6 Outlets (4) Port Plate - (1) Phone CAT5e & (2) Data CAT5e & (1) Cable RG6 Outlets - Location as shown on floor plan			
Den	1.00	(4) Port Plate - (1) Phone CAT5e & (2) Data CAT5e & (1) Cable RG6 Outlets (4) Port Plate - (1) Phone CAT5e & (2) Data CAT5e & (1) Cable RG6 Outlets - Location as shown on floor plan			
Master Bedroom	1.00	(4) Port Plate - (1) Phone CAT5e & (2) Data CAT5e & (1) Cable RG6 Outlets (4) Port Plate - (1) Phone CAT5e & (2) Data CAT5e & (1) Cable RG6 Outlets - Location as shown on floor plan			
Bedroom #2	1.00	(4) Port Plate - (1) Phone CAT5e & (2) Data CAT5e & (1) Cable RG6 Outlets (4) Port Plate - (1) Phone CAT5e & (2) Data CAT5e & (1) Cable RG6 Outlets - Location as shown on floor plan			
Rec Room	1.00	(4) Port Plate - (1) Phone CAT5e & (2) Data CAT5e & (1) Cable RG6 Outlets (4) Port Plate - (1) Phone CAT5e & (2) Data CAT5e & (1) Cable RG6 Outlets - Location as shown on floor plan			
N/A	1.00	2" PVC Conduit from Basement to Attic 2" PVC Conduit from Basement to Attic			
N/A	1.00	Vacuum Rough-In Outlet Vacuum Rough-In Outlets			
Great Room	1.00	Direct 2" Conduit w/ Wall Plates Direct 2" Conduit w/ Wall Plates - Location as shown on floor plan - Conduit installed in-wall to conceal wires connected to wall mounted TV - approx 60 inches from floor			
Garage	1.00	Vacuum Extension Vacuum Extension - Location as shown on floor plan - Extends and connects all vacuum rough-in outlets to one location - Seal vacuum pipe when extended to the garage as per building code			
Garage	1.00	Vacuum System w/ Acessories (VAC-KITCV600AW) Vacuum System w/ Acessories (VAC-KITCV600AW) - Location as shown on floor plan - Includes Ethos central vacuum cannister (CANA-VAC ES-625) and accessories kit (LS Performance Pack)			

Phone: (613) 748-0432 | Fax: (613) 748-0355 | Email: info@orbitalti.com | Website: www.orbitalti.com

5 4 1 1 Canotek Road, Ottawa, Ontario K1J 9M3

Printed By: Jason Thompson (OR) - Page: 2

www.orbitalti.com



Tel: (613) 748-0432
Fax: (613) 748-0355

A Division of the S&S Bolton Group
www.ssbolton.com

Estimate No#: SS2982 Rev.01

Customer Copy

Builder: VALECRAFT HOMES (2019) LTD.
Project: Embrun - Place St Thomas
Lot: Singles Ph 3
Closing Date: 0012
12/22/2020

Salesperson: Jason Thompson
Date: 04/08/2020

Location	Qty	Product / Installation Details	Plan Code	Unit Price	Customer Total
Great Room	1.00	Add 15 AMP plug approx 72 inches from floor above fireplace beside conduit	A		
Garage	1.00	Add 15 Amp separate circuit plug for central vacuum	C		
Kitchen	1.00	Relocate standard light fixture and add 1 keyless fixture (2 in total) on existing switch for future pendant lighting	E		
Great Room	1.00	Add reinforced 3/wire outlet for future ceiling fan or chandelier on added switch	F		
Basement	1.00	Add (1) 15 amp plug	I		
Front Out	1.00	Add motion sensor to garage lighting	J		

*** Total price does not include any applicable taxes.

April 28, 2020
Date

April 28, 2020

Phone: (613) 748-0432 | Fax: (613) 748-0355 | Email: info@sandselectric.ca | Website: www.sandselectric.ca

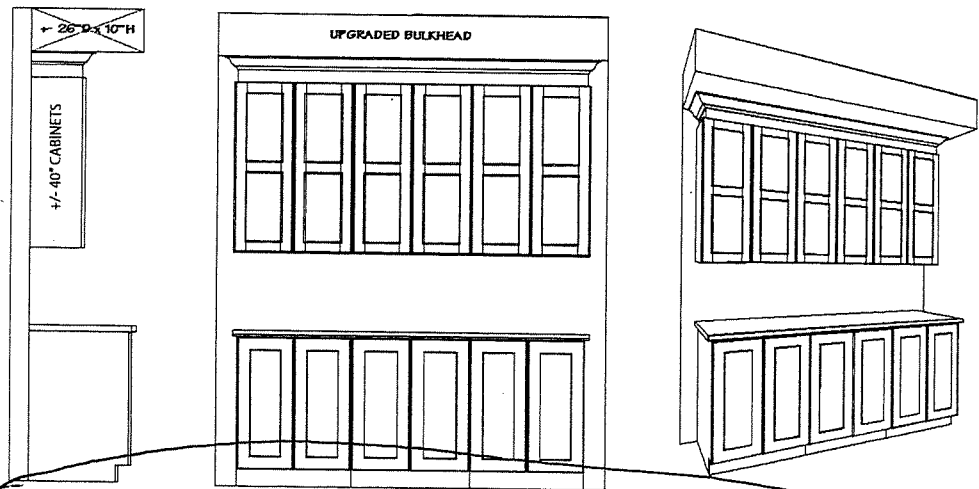
5411 Canotek Road, Ottawa, Ontario K1J 9M3

Printed By: Jason Thompson - Page: 2

SINGLE HOME OPTIONAL KITCHEN CABINET CROWN MOULDING,
FILLER & BULKHEAD DETAILS

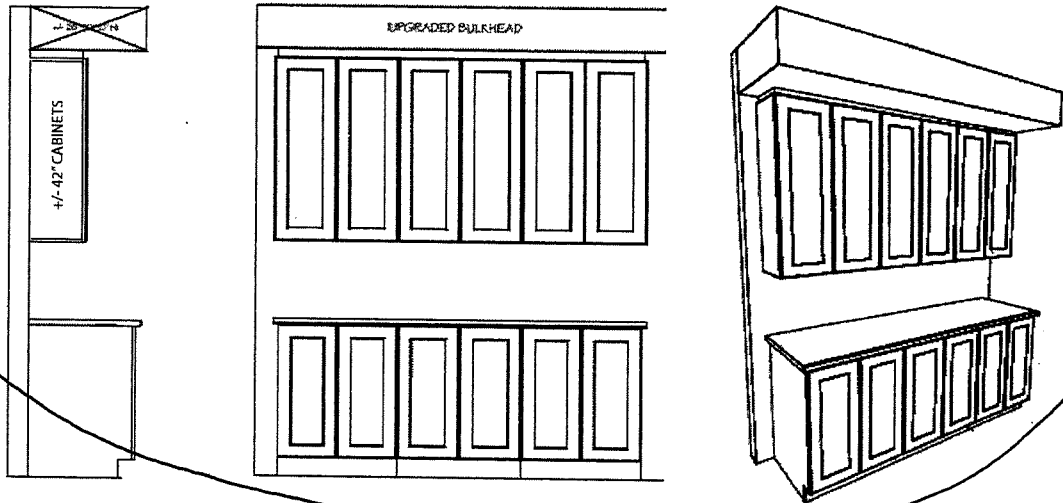
UPC9-3A

- Includes upgrade to 40" uppers with crown moulding & filler detail on upper kitchen cabinetry to upgraded bulkhead.



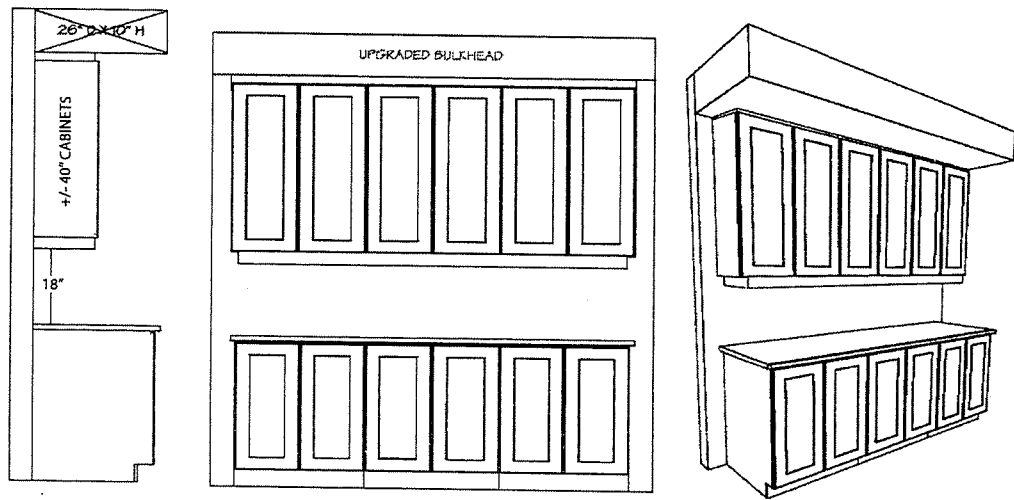
UPC9-2B

- Includes upgrade to 42" uppers with filler detail on upper kitchen cabinetry to upgraded bulkhead.



UPC9-1C

- Includes upgrade to 40" uppers with filler detail & valence on upper kitchen cabinetry. Raised approx. 2" to upgraded bulkhead.



Site: Place St. Thomas 3

Purchaser: _____

Plan No: 50M-338

Lot: 12 - Phase 3

Purchaser: _____

Date: 4/28/20