

Project: Rathwell Landing
Plan No: 4M-1589 Lot No: 307
Model: 1046 Date: Jan. 29-2020

KitchenAid® 30" (76.2 CM) ELECTRIC INDUCTION COOKTOP

PRODUCT MODEL NUMBERS

KICU500X

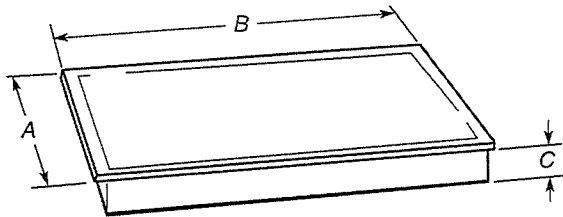
ELECTRICAL REQUIREMENTS:

To properly install your cooktop, you must determine the type of electrical connection you will be using and follow the instructions provided for it here.

- A 4-wire or 3-wire, single phase, 240 volt, 60 Hz., AC only electrical supply is required on a separate, 40-amp circuit (30" [76.2 cm] models), fused on both sides of the line.
- The cooktop should be connected directly to the junction box through flexible, armored or nonmetallic sheathed, copper cable. The flexible, armored cable extending from the fuse box or circuit breaker box should be connected directly to the junction box.
- Locate the junction box to allow as much slack as possible between the junction box and the cooktop so that the cooktop can be moved if servicing becomes necessary in the future.
- Do not cut the conduit. The length of conduit provided is for serviceability of the cooktop.
- A UL listed or CSA approved conduit connector must be provided at each end of the power supply cable (at the cooktop and at the junction box). A listed conduit connector is already provided at the cooktop.

PRODUCT DIMENSIONS

30" (76.2 cm) Cooktops

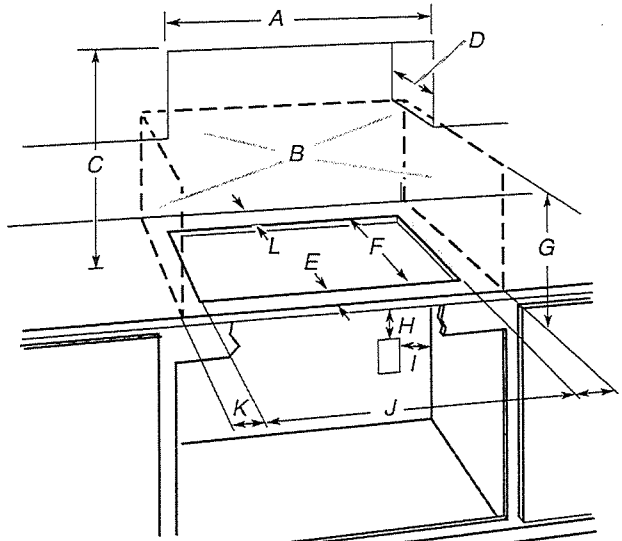


Model KICU500

- A. 21⁵/₁₆" (54.1 cm)
B. 30³/₄" (78.2 cm)
C. 2³/₈" (6.0 cm)

CABINET DIMENSIONS

IMPORTANT: If installing a range hood or microwave hood combination above the range, follow the range hood or microwave hood combination installation instructions for dimensional clearances above the cooktop surface.



- A. 29¹/₂" (75.0 cm) on 30" (76.2 cm) models
B. Combustible area above countertop (shown by dashed box above)
C. 30" (76.2 cm) minimum clearance between top of cooktop platform and bottom of uncovered wood or metal cabinet (24" [61 cm] minimum clearance if bottom of wood or metal cabinet is covered by not less than 1/4" [0.6 cm] flame retardant millboard covered with not less than No. 28 MSG sheet steel, 0.015" [0.04 cm] stainless steel, or 0.024" [0.06 cm] aluminum or 0.020" [0.05 cm] copper)
D. 13" (33.0 cm) recommended upper cabinet depth
E. 2" (5.1 cm)
F. 19⁵/₁₆" (49.0 cm)
G. 18" (45.7 cm) minimum clearance from upper cabinet to countertop within minimum horizontal clearances to cooktop
H. Junction box or outlet; 12" (30.5 cm) minimum from bottom of countertop
I. Junction box or outlet; 10" (25.4 cm) from right-hand side of cabinet
J. 29¹/₂" (75.0 cm) on 30" (76.2 cm) models
K. 1" (2.5 cm) minimum distance to nearest left and right side combustible surface above cooktop
L. 1" (2.5 cm) minimum clearance between back wall and countertop

NOTES: After you make the countertop cutout, some installations may require notching down the base cabinet side walls to clear the cooktop base. To avoid this modification, use a base cabinet with sidewalls wider than the cutout.
If cabinet has a drawer, a 5¹/₈" (13 cm) depth clearance from the countertop to the top of the drawer (or other obstruction) in base cabinet is required.

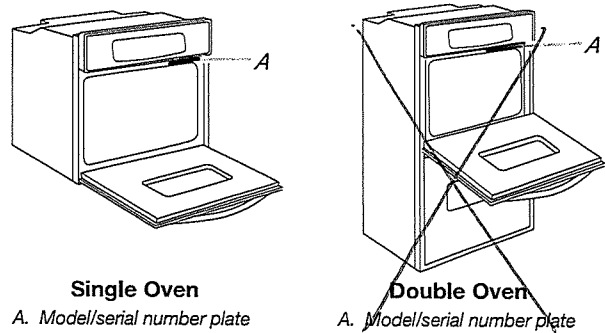
27" (68.6 CM) AND 30" (76.2 CM) ELECTRIC SINGLE AND DOUBLE BUILT-IN OVEN

PRODUCT MODEL NUMBERS

KODE300E	KODT100E	KOST100E
KODE307E	KODT107E	KOST107E
KODE500E	KOSE500E	KEBS109E
KODE507E	KOSE507E	KEBS209E
		KEBS207E

Electrical: To properly install your oven, you must determine the type of electrical connection you will be using and follow the instructions provided for it here.

- Oven must be connected to the proper electrical voltage and frequency as specified on the model/serial number rating plate. The model/serial number rating plate is located under the control panel on single ovens and under the control panel on the upper oven cavity on double ovens. See the following illustrations.



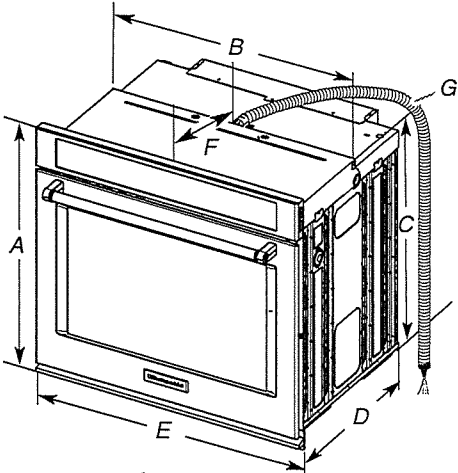
- Models rated from 7.3 to 9.6 kW at 240 volts (5.4 to 7.4 kW at 208 volts) require a separate 40-amp circuit. Models rated at 4.8 kW and below at 240 volts (3.6 kW and below at 208 volts) require a separate 20-amp circuit.
- A circuit breaker is recommended.
- Connect directly to the circuit breaker box (or fused disconnect) through flexible, armored or nonmetallic sheathed, copper cable (with grounding wire). See "Make Electrical Connection" section.
- Flexible conduit from the oven should be connected directly to the junction box.
- Fuse both sides of the line.
- Do not cut the conduit. The length of conduit provided is for serviceability of the oven.
- A UL listed or CSA approved conduit connector must be provided.
- If the house has aluminum wiring, follow the procedure below:
 - Connect a section of solid copper wire to the ends of the flexible conduit leads.
 - Connect the aluminum wiring to the added section of copper wire using special connectors and/or tools designed and UL listed for joining copper to aluminum.

Follow the electrical connector manufacturer's recommended procedure. Aluminum/copper connection must conform with local codes and industry accepted wiring practices.

For power requirements for models KOST107E, KOST100E, KOSE507E, KOSE500E, KODE307E, KODE300E, KODE507E, KODE500E, KODT100E and KODT107E, refer to the following table.

Voltage	Single Thermal	Single Convect	Double Thermal	Double Convect	Double Convect/Thermal
240 VAC	4100 W	4100 W	8163 W	8300 W	8300 W
208 VAC	3100 W	3100 W	6300 W	6300 W	6300 W
240 VAC	17.2 A	17.2 A	34.2 A	34.2 A	34.2 A
208 VAC	15.0 A	15.0 A	29.9 A	29.9 A	29.9 A

PRODUCT DIMENSIONS

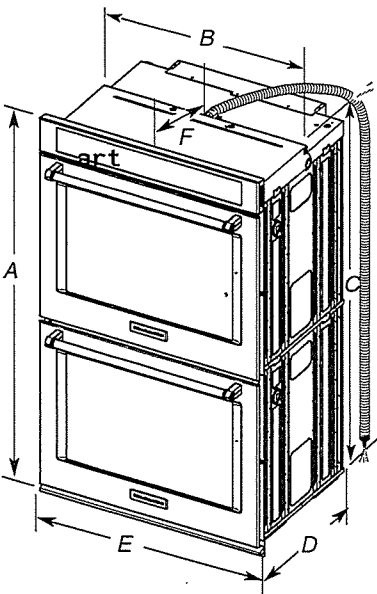


27" (68.6 cm) models

- A. 28³/₄" (72.8 cm) max. overall height
- B. 25⁷/₁₆" (64.6 cm) max. recessed width
- C. 26³/₄" (67.9 cm) recessed height
- D. 23¹/₄" (59.1 cm) max. recessed depth
- E. 27" (68.6 cm) overall width
- F. 12" (30.5 cm) from back of control panel to start of strain relief
- G. 48" (121.9 cm) flexible conduit length

30" (76.2 cm) models

- A. 28³/₄" (72.8 cm) max. overall height
- B. 28¹/₂" (72.4 cm) max. recessed width
- C. 26³/₄" (67.9 cm) recessed height
- D. 23¹/₄" (59.1 cm) max. recessed depth
- E. 30" (76.2 cm) overall width
- F. 12" (30.5 cm) from back of control panel to start of strain relief
- G. 48" (121.9 cm) flexible conduit length



27" (68.6 cm) models

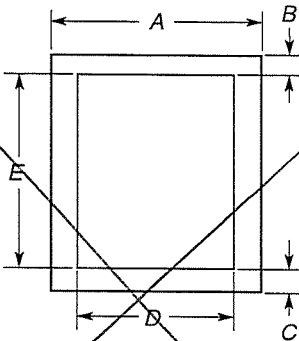
- A. 51¹/₁₆" (130.0 cm) max. overall height
- B. 25⁷/₁₆" (64.6 cm) max. recessed width
- C. 48¹³/₁₆" (124.0 cm) recessed height
- D. 23¹/₄" (59.1 cm) max. recessed depth
- E. 27" (68.6 cm) overall width
- F. 12" (30.5 cm) from back of control panel to start of strain relief
- G. 66" (167.6 cm) flexible conduit length

30" (76.2 cm) models

- A. 51¹/₁₆" (130.0 cm) max. overall height
- B. 28¹/₂" (72.4 cm) max. recessed width
- C. 48¹³/₁₆" (124.0 cm) recessed height
- D. 23¹/₄" (59.1 cm) max. recessed depth
- E. 30" (76.2 cm) overall width
- F. 12" (30.5 cm) from back of control panel to start of strain relief
- G. 66" (167.6 cm) flexible conduit length

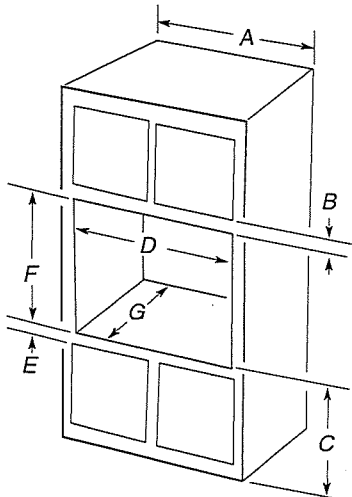
CABINET DIMENSIONS - SINGLE OVENS

Single Oven Undercounter (without cooktop installed above)



- | | |
|--|--|
| 27" (68.6 cm) models | 30" (76.2 cm) models |
| A. 27" (68.6 cm) min. cabinet width | A. 30" (76.2 cm) min. cabinet width |
| B. 1 1/2" (3.8 cm) min. top of cutout to underside of countertop | B. 1 1/2" (3.8 cm) min. top of cutout to underside of countertop |
| C. 5 1/4" (13.3 cm) bottom of cutout to floor | C. 5 1/4" (13.3 cm) bottom of cutout to floor |
| D. 25 1/2" (64.8 cm) cutout width | D. 28 1/2" (72.4 cm) cutout width |
| E. 28" (71.2 cm) min. cutout height | E. 28" (71.2 cm) min. cutout height |

Single Ovens Installed in Cabinet

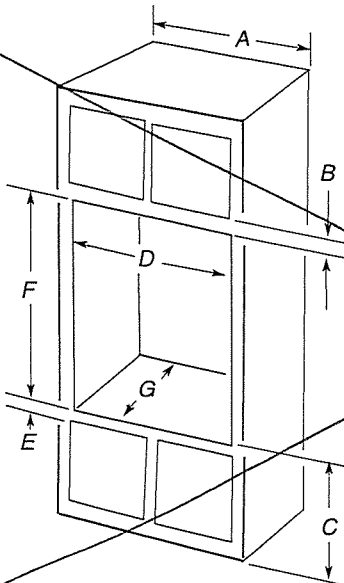


- | | |
|---|---|
| 27" (68.6 cm) models | 30" (76.2 cm) models |
| A. 27" (68.6 cm) min. cabinet width | A. 30" (76.2 cm) min. cabinet width |
| B. 1" (2.5 cm) top of cutout to bottom of upper cabinet door | B. 1" (2.5 cm) top of cutout to bottom of upper cabinet door |
| C. 32" (81.3 cm) bottom of cutout to floor | C. 32" (81.3 cm) bottom of cutout to floor |
| D. 25 1/2" (64.8 cm) cutout width | D. 28 1/2" (72.4 cm) cutout width |
| E. 1 1/2" (3.8 cm) min. bottom of cutout to top of cabinet door | E. 1 1/2" (3.8 cm) min. bottom of cutout to top of cabinet door |
| F. 28" (71.2 cm)* recommended cutout height | F. 28" (71.2 cm)* recommended cutout height |
| G. 24" (60.7 cm) cutout depth | G. 24" (60.7 cm) cutout depth |

*NOTE: The cutout height can be between 26 5/16" (68.4 cm) and 29 7/16" (74.8 cm) for single ovens.

CABINET DIMENSIONS - SINGLE OVENS

Double Ovens Installed in Cabinet



- | | |
|---|---|
| 27" (68.6 cm) models | 30" (76.2 cm) models |
| A. 27" (68.6 cm) min. cabinet width | A. 30" (76.2 cm) min. cabinet width |
| B. 1" (2.5 cm) top of cutout to bottom of upper cabinet door | B. 1" (2.5 cm) top of cutout to bottom of upper cabinet door |
| C. 14 9/4" (37.5 cm) bottom of cutout to floor is recommended. 4"-14 9/4" (10.2-37.5 cm) bottom of cutout to floor is acceptable. | C. 14 9/4" (37.5 cm) bottom of cutout to floor is recommended. 4"-14 9/4" (10.2-37.5 cm) bottom of cutout to floor is acceptable. |
| D. 25 1/2" (64.8 cm) cutout width | D. 28 1/2" (72.4 cm) cutout width |
| E. 1 1/2" (3.8 cm) min. bottom of cutout to top of cabinet door | E. 1 1/2" (3.8 cm) min. bottom of cutout to top of cabinet door |
| F. 50 1/4" (127.6 cm)* recommended cutout height | F. 50 1/4" (127.6 cm)* recommended cutout height |
| G. 24" (60.7 cm) cutout depth | G. 24" (60.7 cm) cutout depth |

*NOTE: The cutout height can be between 48 7/8" (124.1 cm) and 52 3/16" (132.6 cm) for double ovens.

Project: Rathwell Landing
Plan No: 4M-1589 Lot No: 307
Model: 1046 Date: Jan. 29-2020

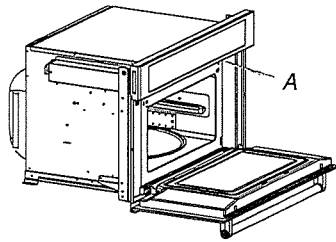
KitchenAid® 27" (68.6 cm) and 30" (76.2 cm) Electric Built-In Convection Microwave Oven

PRODUCT MODEL NUMBERS

KMBP100E ~~KMBP107E~~

ELECTRICAL CONNECTION

- Microwave oven must be connected to the proper electrical voltage and frequency as specified on the model/serial number rating plate. The model/serial/rating plate is located underneath the control panel, along the oven vent.

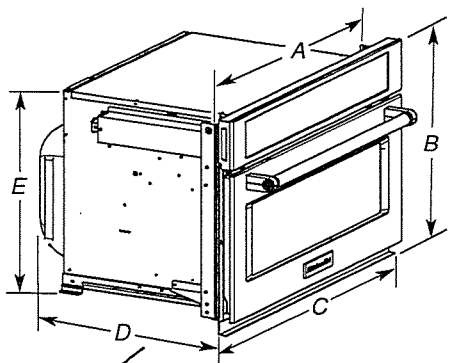


A. Model/serial/rating plate

- The microwave oven rated 120/240 volt, 20-amp, has 4 wires (L1, L2, N and G) in the flex conduit and should be connected to a 20-amp maximum rated circuit, overcurrent protected on both the L1 and L2 circuits.
- A time-delay fuse or circuit breaker is recommended.

PRODUCT DIMENSIONS

27" (68.6 cm) and 30" (76.2 cm) Microwave Ovens



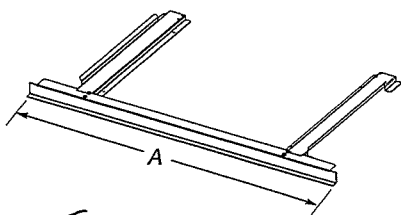
~~27" (68.6 cm) models~~

- ~~A. 25 3/4" (64.5 cm)~~
- ~~B. 18 3/4" (47.3 cm) overall height~~
- ~~C. 26 3/4" (67.9 cm) overall width~~
- ~~D. 21 1/2" (54.6 cm)~~
- ~~E. 17 3/8" (44.1 cm)~~

~~30" (76.2 cm) models~~

- ~~A. 28 3/8" (72.1 cm)~~
- ~~B. 18 3/8" (47.3 cm) overall height~~
- ~~C. 29 3/4" (75.6 cm) overall width~~
- ~~D. 21 1/2" (54.6 cm)~~
- ~~E. 17 3/8" (44.1 cm)~~

27" (68.6 cm) and 30" (76.2 cm) Microwave Oven Spacer Kit



~~27" (68.6 cm) models~~

- ~~A. 26 3/4" (67.9 cm) overall width~~

~~30" (76.2 cm) models~~

- ~~A. 29 3/4" (75.6 cm) overall width~~

NOTE: The microwave oven spacer kit will allow the microwave oven to be installed in a 17 3/8"-17 3/4" (44.1-45.1 cm) maximum cutout height.

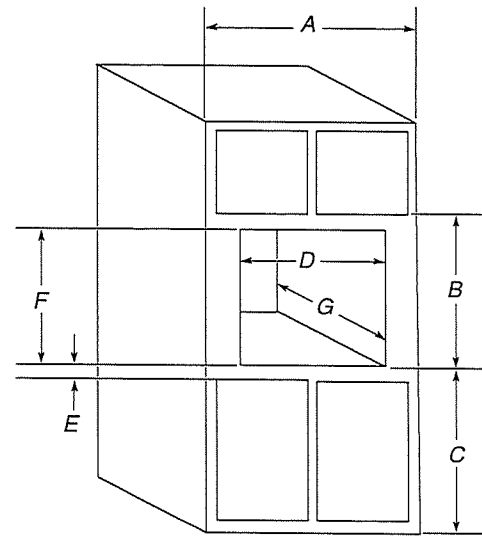
A microwave oven spacer kit is available from your dealer that will allow the microwave oven to be installed in a 19"-19 3/16" (48.3-50.2 cm) maximum cutout height. Match the oven size to the following kits:

- 27" (68.6 cm) Stainless Steel - Model W10469901
- 30" (76.2 cm) Stainless Steel - Model W10469903

To order, see the "Assistance or Service" section of the Use and Care Guide.

CABINET DIMENSIONS

27" (68.6 cm) and 30" (76.2 cm) Microwave Ovens



~~27" (68.6 cm) models~~

- ~~A. 27" (68.6 cm) min. cabinet width~~
- ~~B. 18 3/8" (47.3 cm) from bottom of cutout to bottom of upper cabinet door~~
- ~~C. 40" (101.6 cm) bottom of cutout to floor (recommended)~~
- ~~D. 25 1/2" (64.8 cm) cutout width~~
- ~~E. 1 1/2" (3.8 cm) min. bottom of cutout to top of cabinet door~~
- ~~F. 17 3/8" (44.7 cm) recommended cutout height (will fit cutout height from 17 3/8" [44.1 cm] to 17 3/4" [45.1 cm])~~
- ~~G. 21 1/8" (55.5 cm) min. cutout depth~~

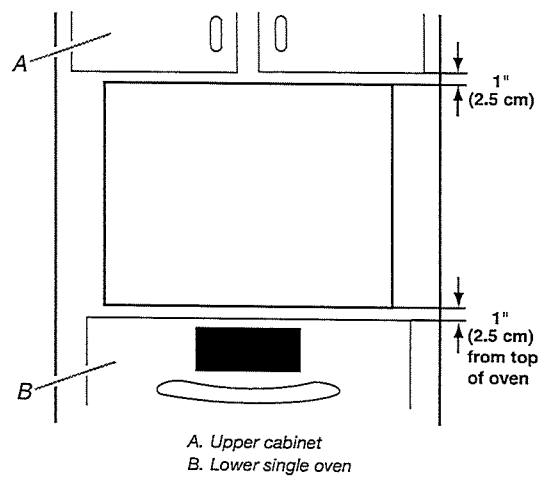
~~30" (76.2 cm) models~~

- ~~A. 30" (76.2 cm) min. cabinet width~~
- ~~B. 18 3/8" (47.3 cm) from bottom of cutout to bottom of upper cabinet door~~
- ~~C. 40" (101.6 cm) bottom of cutout to floor (recommended)~~
- ~~D. 28 1/2" (72.4 cm) cutout width~~
- ~~E. 1 1/2" (3.8 cm) min. bottom of cutout to top of cabinet door~~
- ~~F. 17 3/8" (44.7 cm) recommended cutout height (will fit cutout height from 17 3/8" [44.1 cm] to 17 3/4" [45.1 cm])~~
- ~~G. 21 1/8" (55.5 cm) min. cutout depth~~

MINIMUM INSTALLATION CLEARANCES

For proper installation, the following minimum clearances must exist above and below the cabinet opening.

Installation Above Single Built-In Oven



A. Upper cabinet
B. Lower single oven

Approved models: KMBP100E and KMBP107E.