

LOT _____ XXxx

DATE _____ XX/XX/XX

THIS DRAWINGS IS TO BE USED IN CONJUNCTION WITH SCHEDULE B-1A AND MAY SHOW ONLY SOME OF THE CHANGES DETAILED ON THAT DOCUMENT. SHOULD THE DRAWINGS NOT SHOW ALL ITEMS CONTAINED ON A SCHEDULE OR MISS OTHER ITEMS ALTOGETHER, THE SCHEDULE IS CONSIDERED THE GOVERNING DOCUMENT.
FLOORS CONT

I SCOTT IRWIN BCIN 20765 HAVE REVIEWED AND TAKE RESPONSIBILITY FOR DESIGN ACTIVITIES RELATING TO, HOUSE & SMALL BUILDINGS _____.

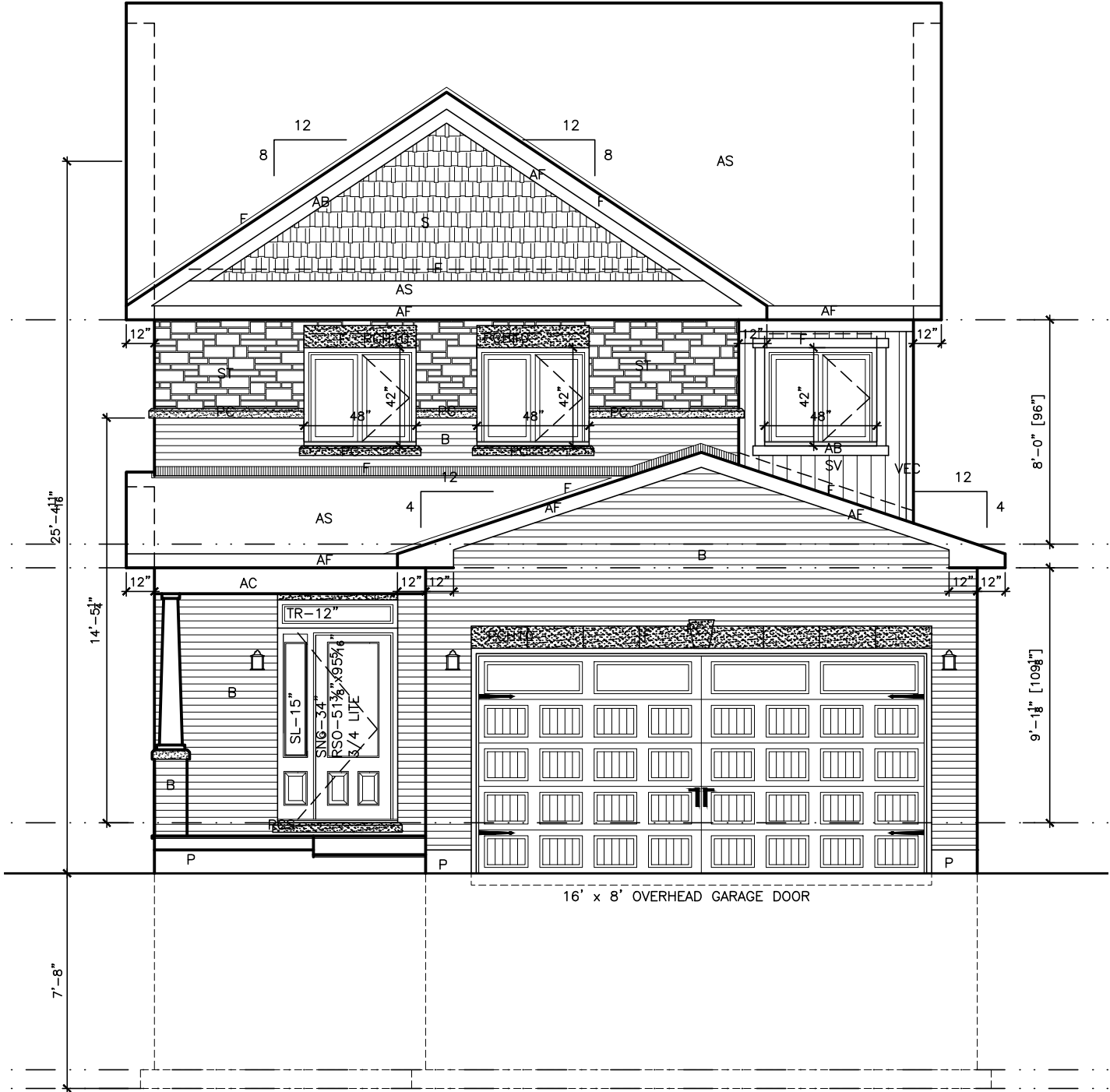
- EXTERIOR FINISH LEGEND
- B - BRICK (MAIN)
 - B1 - BRICK SOLDIER COURSE (ACCENT)
 - B2 - BRICK SOLDIER COURSE (ACCENT) 20mm PROUD
 - B3 - BRICK SLEEPER COURSE
 - B4 - STACK BOND (ACCENT)
 - B5 - BRICK SILL (ACCENT)
 - B6 - BRICK ROW LOCK (ACCENT)
 - B7 - BRICK CORBELLING
 - B8 - BRICK COINING 20mm PROUD
 - +20 - BRICK 20mm PROUD
 - 20 - BRICK RECESSED 20mm
 - S - SIDING (HORIZONTAL)
 - ST - STONE VENEER
 - T - TRIM 200mm COVE SIDING
 - AF - ALUMINUM FACSIA
 - AC - ALUMINUM CLADDING
 - AS - ASPHALT SHINGLES
 - F - FLASHING
 - V - ROOF VENT MAX
 - P - PARGING
 - PC - PRECAST
 - PCH10 - PRECAST HEADER 10"
 - PCH8 - PRECAST HEADER 8"
 - PCS - PRECAST SILL
 - PCB - PRECAST BAND
 - VS - VINYL SHAKES

2012 OBC DRAWINGS

2.	AS PER STRUCTURAL		
1.	STANDARD DRAWINGS	02/11/15	SI
NO	DESCRIPTION	DATE	BY



TITLE: Elevation A	
ACAD FILE:	SCALE: 3/16" = 1'-0"
830-The Butler 2012 Footprint (STANDARD DRAWINGS)	DWG. A-1



LOT _____ XXxx

DATE _____ XX/XX/XX

THIS DRAWINGS IS TO BE USED IN CONJUNCTION WITH SCHEDULE B-1A AND MAY SHOW ONLY SOME OF THE CHANGES DETAILED ON THAT DOCUMENT. SHOULD THE DRAWINGS NOT SHOW ALL ITEMS CONTAINED ON A SCHEDULE OR MISS OTHER ITEMS ALTOGETHER, THE SCHEDULE IS CONSIDERED THE GOVERNING DOCUMENT.
FLOORS CONT

I SCOTT IRWIN BCIN 20765 HAVE REVIEWED AND TAKE RESPONSIBILITY FOR DESIGN ACTIVITIES RELATING TO, HOUSE & SMALL BUILDINGS _____.

- EXTERIOR FINISH LEGEND
- B - BRICK (MAIN)
 - B1 - BRICK SOLDIER COURSE (ACCENT)
 - B2 - BRICK SOLDIER COURSE (ACCENT)
 - B3 - BRICK SLEEPER COURSE
 - B4 - STACK BOND (ACCENT)
 - B5 - BRICK SILL (ACCENT)
 - B6 - BRICK ROW LOCK (ACCENT)
 - B7 - BRICK CORBELLING
 - B8 - BRICK COINING 20mm PROUD
 - +20 - BRICK 20mm PROUD
 - 20 - BRICK RECESSED 20mm
 - S - SIDING (HORIZONTAL)
 - ST - STONE VENEER
 - T - TRIM 200mm COVE SIDING
 - AF - ALUMINUM FACSIA
 - AC - ALUMINUM CLADDING
 - AS - ASPHALT SHINGLES
 - F - FLASHING
 - V - ROOF VENT MAX
 - P - PARGING
 - PC - PRECAST
 - PCH10 - PRECAST HEADER 10"
 - PCH8 - PRECAST HEADER 8"
 - PCS - PRECAST SILL
 - PCB - PRECAST BAND
 - VS - VINYL SHAKES

2012 OBC DRAWINGS

2.	AS PER STRUCTURAL		
1.	STANDARD DRAWINGS	02/11/15	SI
NO	DESCRIPTION	DATE	BY

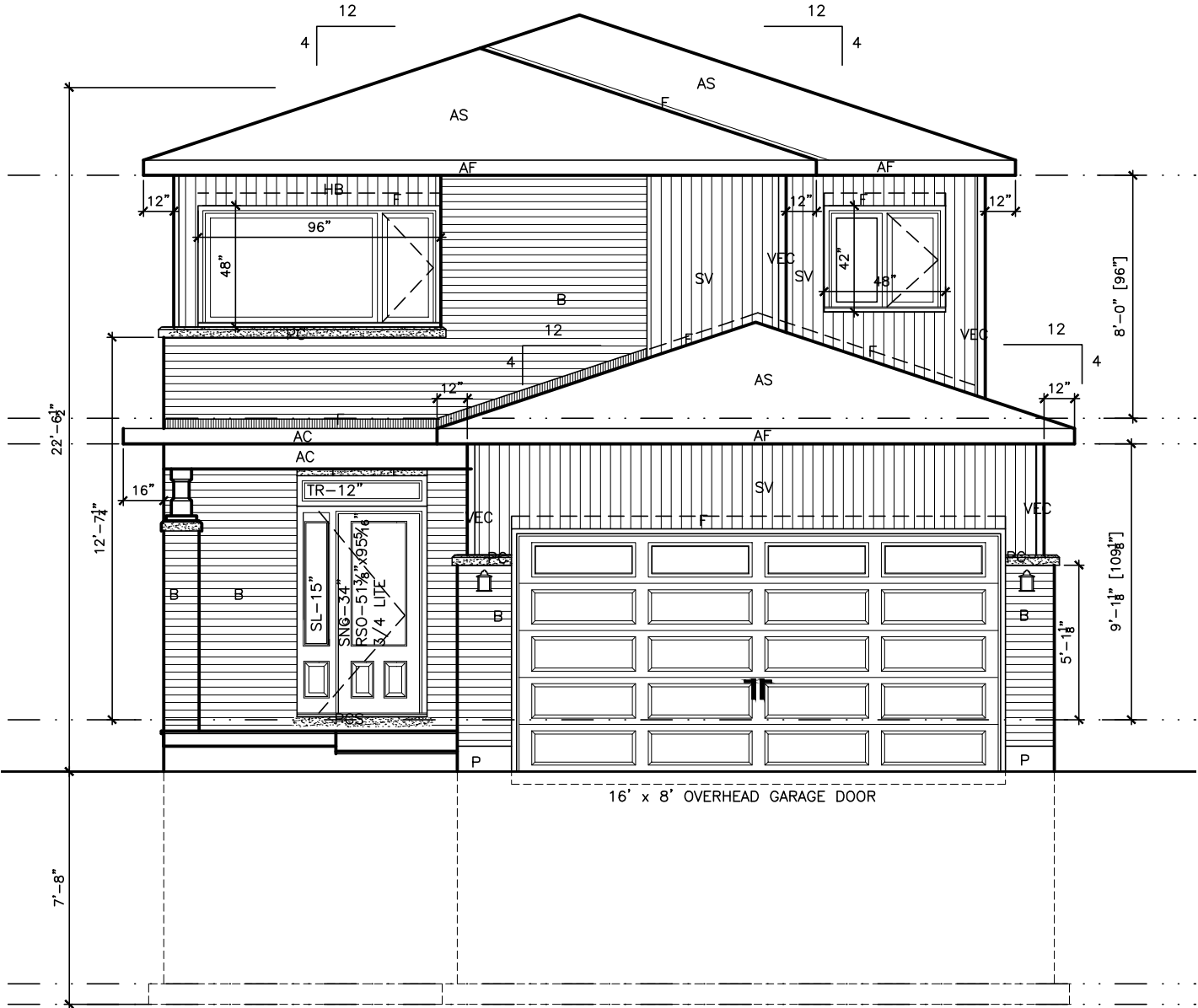


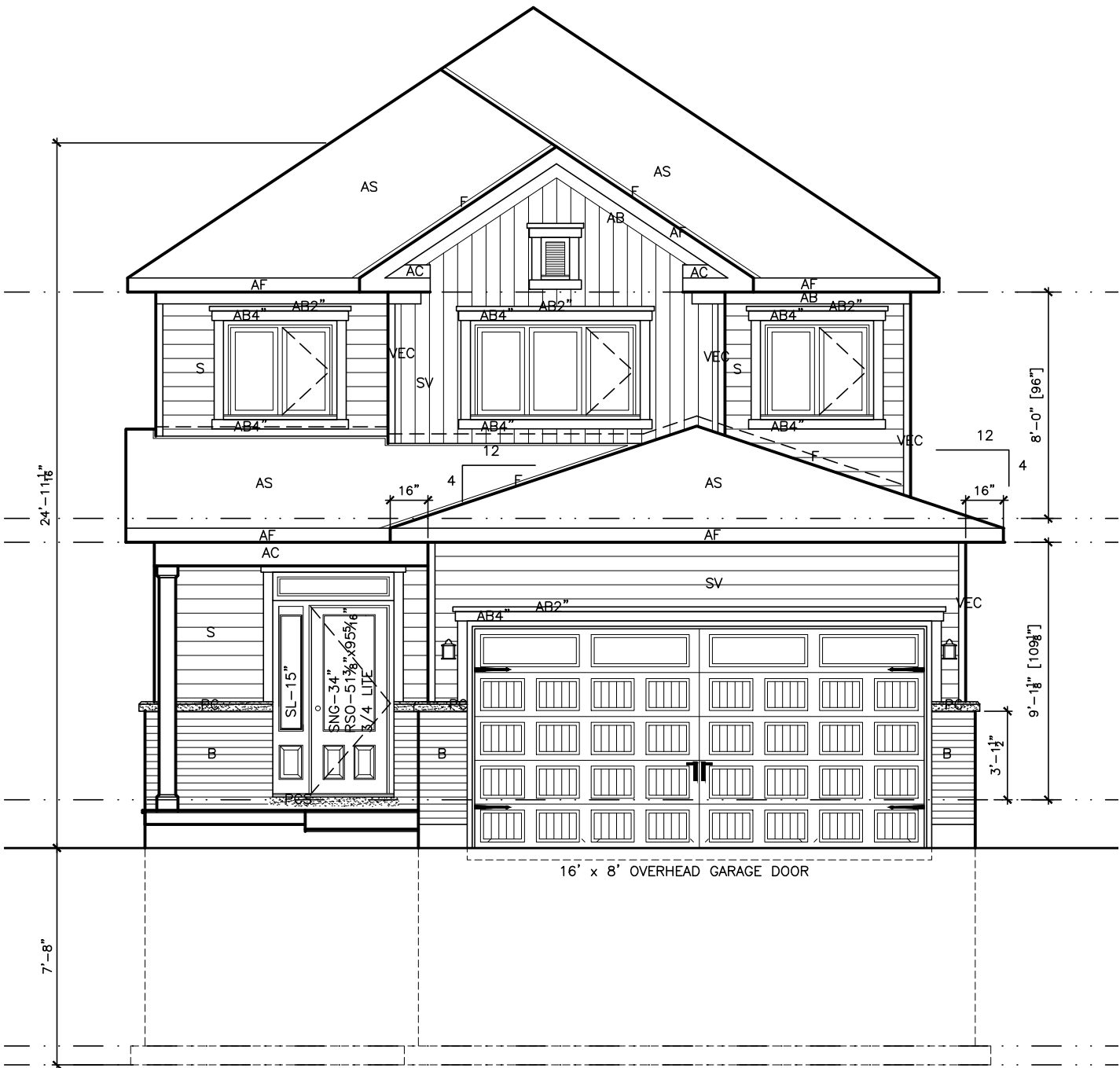
TITLE: Elevation B

ACAD FILE: SCALE: 3/16" = 1'-0"

830-The Butler
2012 Footprint
(STANDARD DRAWINGS)

DWG. A-1b





LOT _____ XXxx

DATE _____ XX/XX/XX

THIS DRAWING IS TO BE USED IN CONJUNCTION WITH SCHEDULE B-1A AND MAY SHOW ONLY SOME OF THE CHANGES DETAILED ON THAT DOCUMENT. SHOULD THE DRAWINGS NOT SHOW ALL ITEMS CONTAINED ON A SCHEDULE OR MISS OTHER ITEMS ALTOGETHER, THE SCHEDULE IS CONSIDERED THE GOVERNING DOCUMENT. FLOORS CONT.

I SCOTT IRWIN BCIN 20765 HAVE REVIEWED AND TAKE RESPONSIBILITY FOR DESIGN ACTIVITIES RELATING TO, HOUSE & SMALL BUILDINGS _____.

- EXTERIOR FINISH LEGEND
- B - BRICK (MAIN)
 - B1 - BRICK SOLDIER COURSE (ACCENT)
 - B2 - BRICK SOLDIER COURSE (ACCENT) 20mm PROUD
 - B3 - BRICK SLEEPER COURSE
 - B4 - STACK BOND (ACCENT)
 - B5 - BRICK SILL (ACCENT)
 - B6 - BRICK ROW LOCK (ACCENT)
 - B7 - BRICK CORBELLING
 - B8 - BRICK COINING 20mm PROUD
 - +20 - BRICK 20mm PROUD
 - 20 - BRICK RECESSED 20mm
 - S - SIDING (HORIZONTAL)
 - ST - STONE VENEER
 - T - TRIM 200mm COVE SIDING
 - AF - ALUMINUM FASCIA
 - AC - ALUMINUM CLADDING
 - AS - ASPHALT SHINGLES
 - F - FLASHING
 - V - ROOF VENT MAX
 - P - PARGING
 - PC - PRECAST
 - PCH10 - PRECAST HEADER 10"
 - PCH8 - PRECAST HEADER 8"
 - PCS - PRECAST SILL
 - PCB - PRECAST BAND
 - VS - VINYL SHAKES

2012 OBC DRAWINGS

2.	AS PER STRUCTURAL		
1.	STANDARD DRAWINGS	02/11/15	SI
NO.	DESCRIPTION	DATE	BY



TITLE: Elevation C

ACAD FILE: SCALE: 3/16" = 1'-0"

830-The Butler
2012 Footprint
(STANDARD DRAWINGS)

DWG. A-1c

THIS DRAWING IS TO BE USED IN CONJUNCTION WITH SCHEDULE B-1A AND MAY SHOW ONLY SOME OF THE CHANGES DETAILED ON THAT DOCUMENT. SHOULD THE DRAWINGS NOT SHOW ALL ITEMS CONTAINED ON A SCHEDULE OR MISS OTHER ITEMS ALTOGETHER, THE SCHEDULE IS CONSIDERED THE GOVERNING DOCUMENT.
FLOORS CONT

I SCOTT IRWIN BCIN 20765 HAVE REVIEWED AND TAKE RESPONSIBILITY FOR DESIGN ACTIVITIES RELATING TO, HOUSE & SMALL BUILDINGS _____.



2012 OBC DRAWINGS

2.	AS PER STRUCTURAL	
1.	STANDARD DRAWINGS	02/11/15 SI
NO	DESCRIPTION	DATE BY

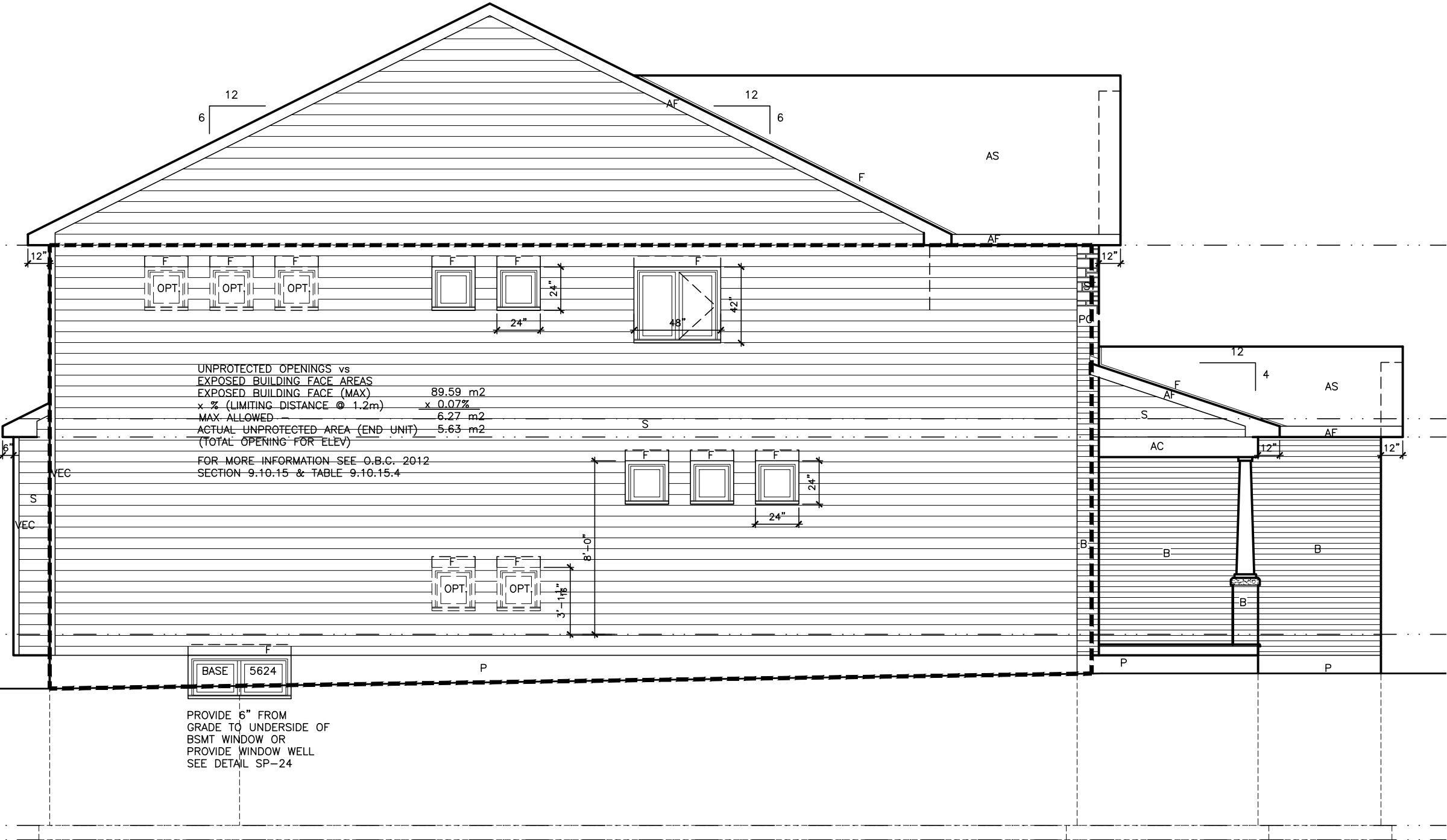


TITLE: Left Side Elevation A

ACAD FILE: SCALE: 3/16" = 1'-0"

830-The Butler
2012 Footprint
(STANDARD DRAWINGS)

DWG. A-2



LOT _____ XXxx

DATE _____ XX/XX/XX

THIS DRAWING IS TO BE USED IN CONJUNCTION WITH SCHEDULE B-1A AND MAY SHOW ONLY SOME OF THE CHANGES DETAILED ON THAT DOCUMENT. SHOULD THE DRAWINGS NOT SHOW ALL ITEMS CONTAINED ON A SCHEDULE OR MISS OTHER ITEMS ALTOGETHER, THE SCHEDULE IS CONSIDERED THE GOVERNING DOCUMENT.
FLOORS CONT

I SCOTT IRWIN BCIN 20765 HAVE REVIEWED AND TAKE RESPONSIBILITY FOR DESIGN ACTIVITIES RELATING TO, HOUSE & SMALL BUILDINGS _____.



2012 OBC DRAWINGS

2.	AS PER STRUCTURAL		
1.	STANDARD DRAWINGS	02/11/15	SI
NO	DESCRIPTION	DATE	BY



TITLE: Left Side Elevation B

ACAD FILE: SCALE: 3/16" = 1'-0"

830-The Butler
2012 Footprint
(STANDARD DRAWINGS)

A-2b

THIS DRAWING IS TO BE USED IN CONJUNCTION WITH SCHEDULE B-1A AND MAY SHOW ONLY SOME OF THE CHANGES DETAILED ON THAT DOCUMENT. SHOULD THE DRAWINGS NOT SHOW ALL ITEMS CONTAINED ON A SCHEDULE OR MISS OTHER ITEMS ALTOGETHER, THE SCHEDULE IS CONSIDERED THE GOVERNING DOCUMENT.
FLOORS CONT

I SCOTT IRWIN BCIN 20765 HAVE REVIEWED AND TAKE RESPONSIBILITY FOR DESIGN ACTIVITIES RELATING TO, HOUSE & SMALL BUILDINGS _____.

2012 OBC DRAWINGS

2.	AS PER STRUCTURAL		
1.	STANDARD DRAWINGS	02/11/15	SI
NO	DESCRIPTION	DATE	BY

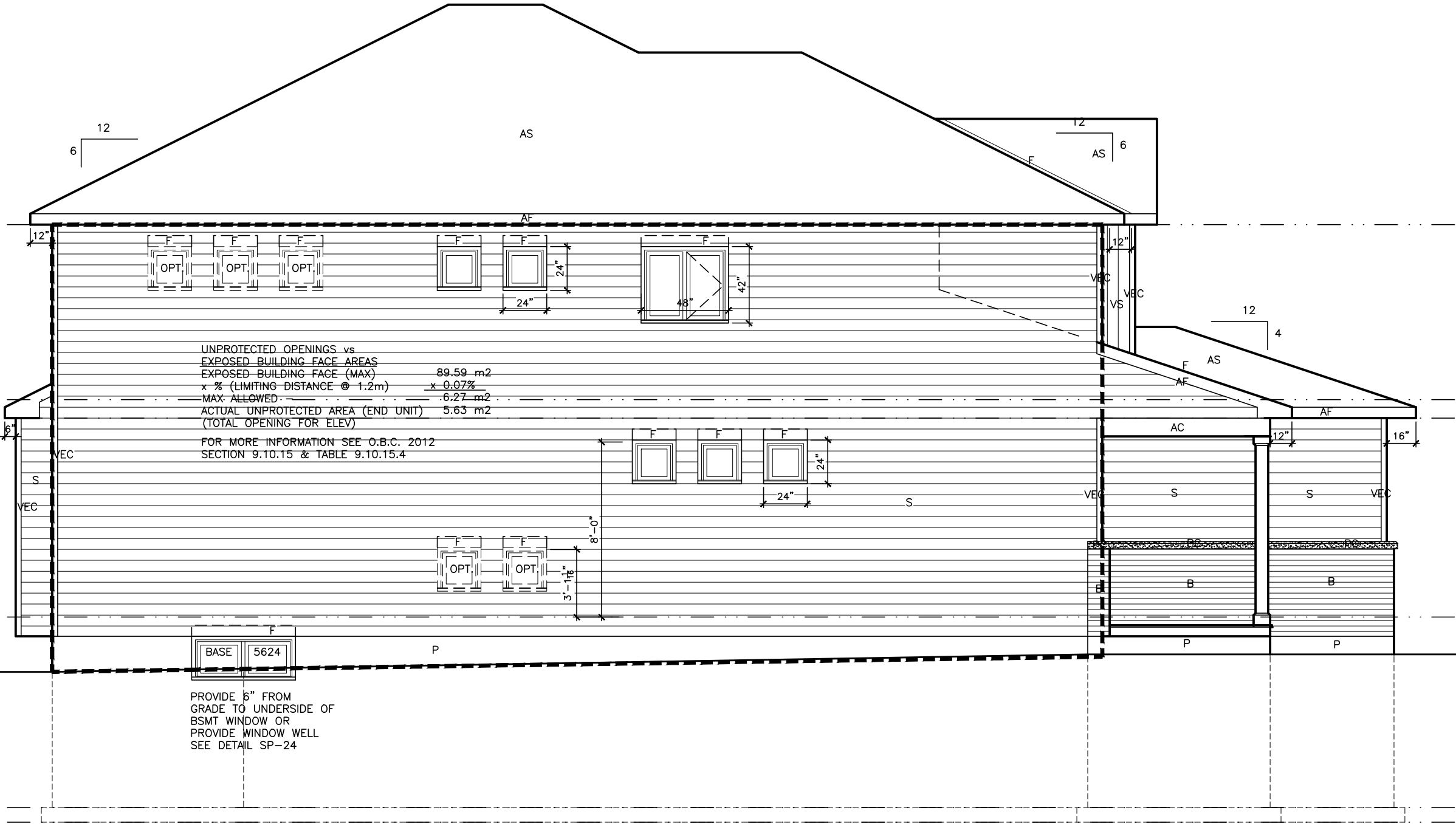


TITLE: Left Side Elevation C

ACAD FILE: SCALE: 3/16" = 1'-0"

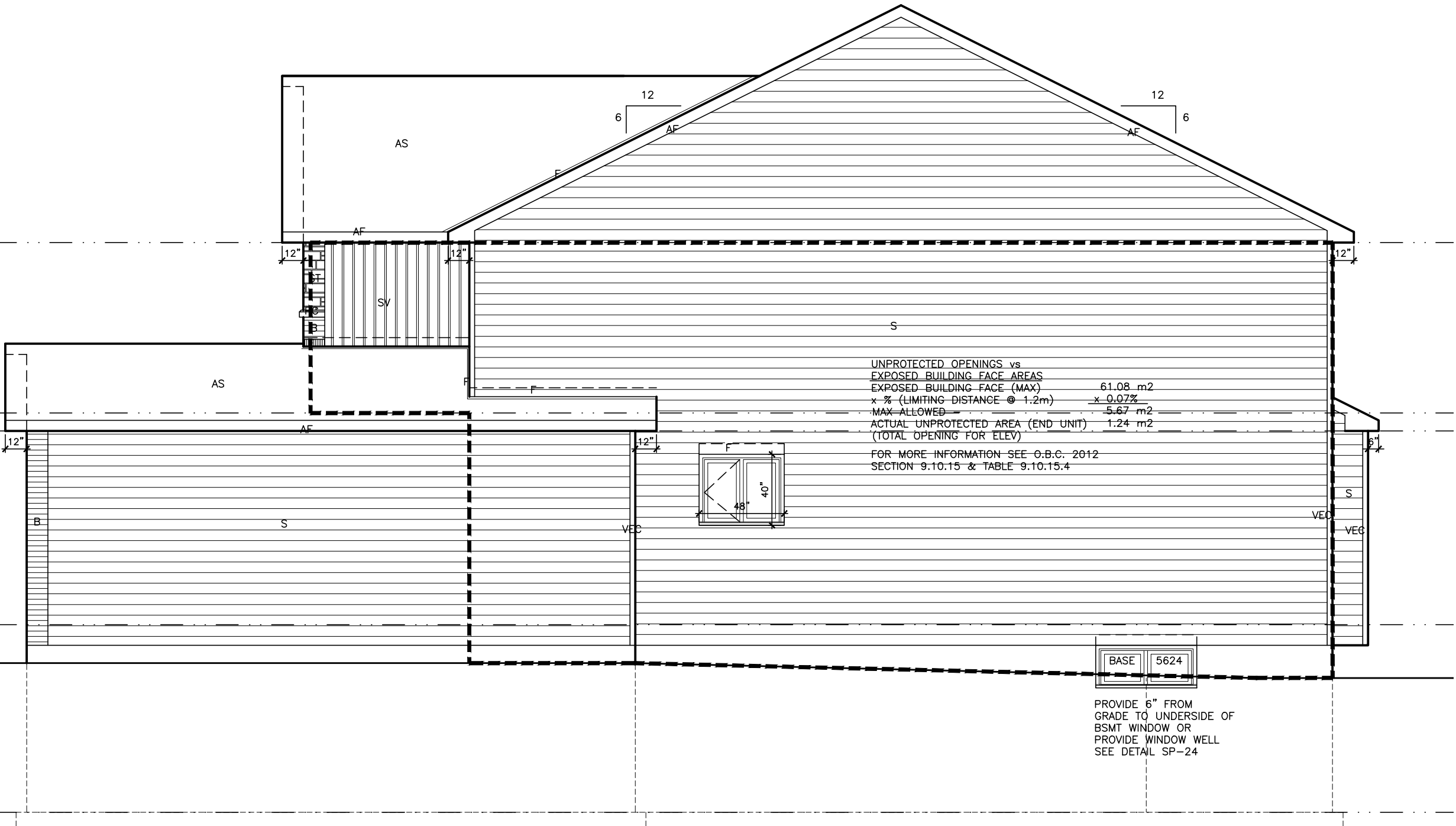
830-The Butler
2012 Footprint
(STANDARD DRAWINGS)

DWG. A-2c



THIS DRAWINGS IS TO BE USED IN CONJUNCTION WITH SCHEDULE B-1A AND MAY SHOW ONLY SOME OF THE CHANGES DETAILED ON THAT DOCUMENT. SHOULD THE DRAWINGS NOT SHOW ALL ITEMS CONTAINED ON A SCHEDULE OR MISS OTHER ITEMS ALTOGETHER, THE SCHEDULE IS CONSIDERED THE GOVERNING DOCUMENT.
FLOORS CONT

I SCOTT IRWIN BCIN 20765 HAVE REVIEWED AND TAKE RESPONSIBILITY FOR DESIGN ACTIVITIES RELATING TO, HOUSE & SMALL BUILDINGS _____.



2012 OBC DRAWINGS

2.	AS PER STRUCTURAL		
1.	STANDARD DRAWINGS	02/11/15	SI
NO	DESCRIPTION	DATE	BY



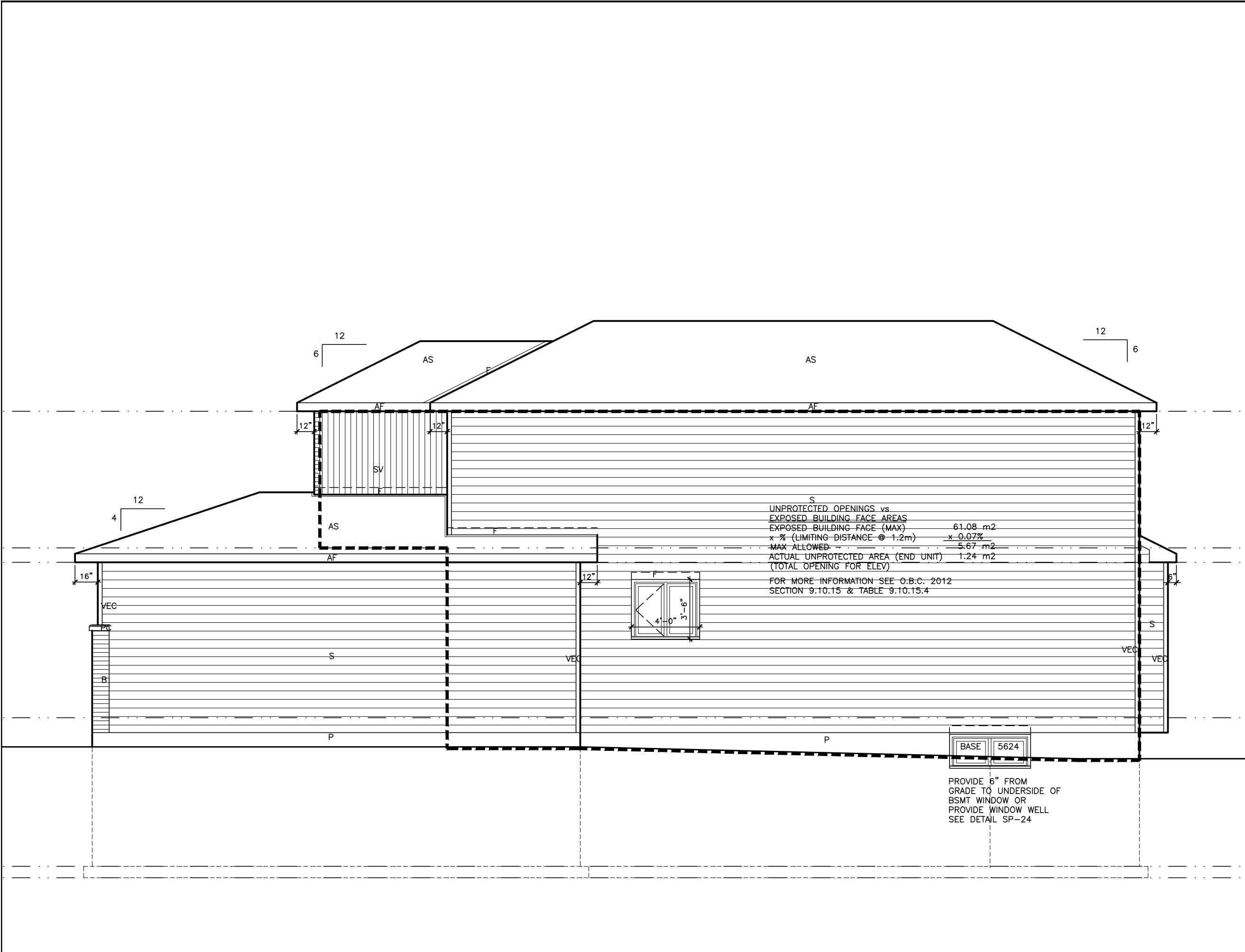
TITLE: Right Side Elevation A

ACAD FILE: SCALE: 3/16" = 1'-0"

830-The Butler
2012 Footprint
(STANDARD DRAWINGS)
A-3

THIS DRAWINGS IS TO BE USED IN CONJUNCTION WITH SCHEDULE B-1A AND MAY SHOW ONLY SOME OF THE CHANGES DETAILED ON THAT DOCUMENT. SHOULD THE DRAWINGS NOT SHOW ALL ITEMS CONTAINED ON A SCHEDULE OR MISS OTHER ITEMS ALTOGETHER, THE SCHEDULE IS CONSIDERED THE GOVERNING DOCUMENT.
FLOORS CONT

I SCOTT IRWIN BCIN 20765 HAVE REVIEWED AND TAKE RESPONSIBILITY FOR DESIGN ACTIVITIES RELATING TO, HOUSE & SMALL BUILDINGS _____.



2012 OBC DRAWINGS

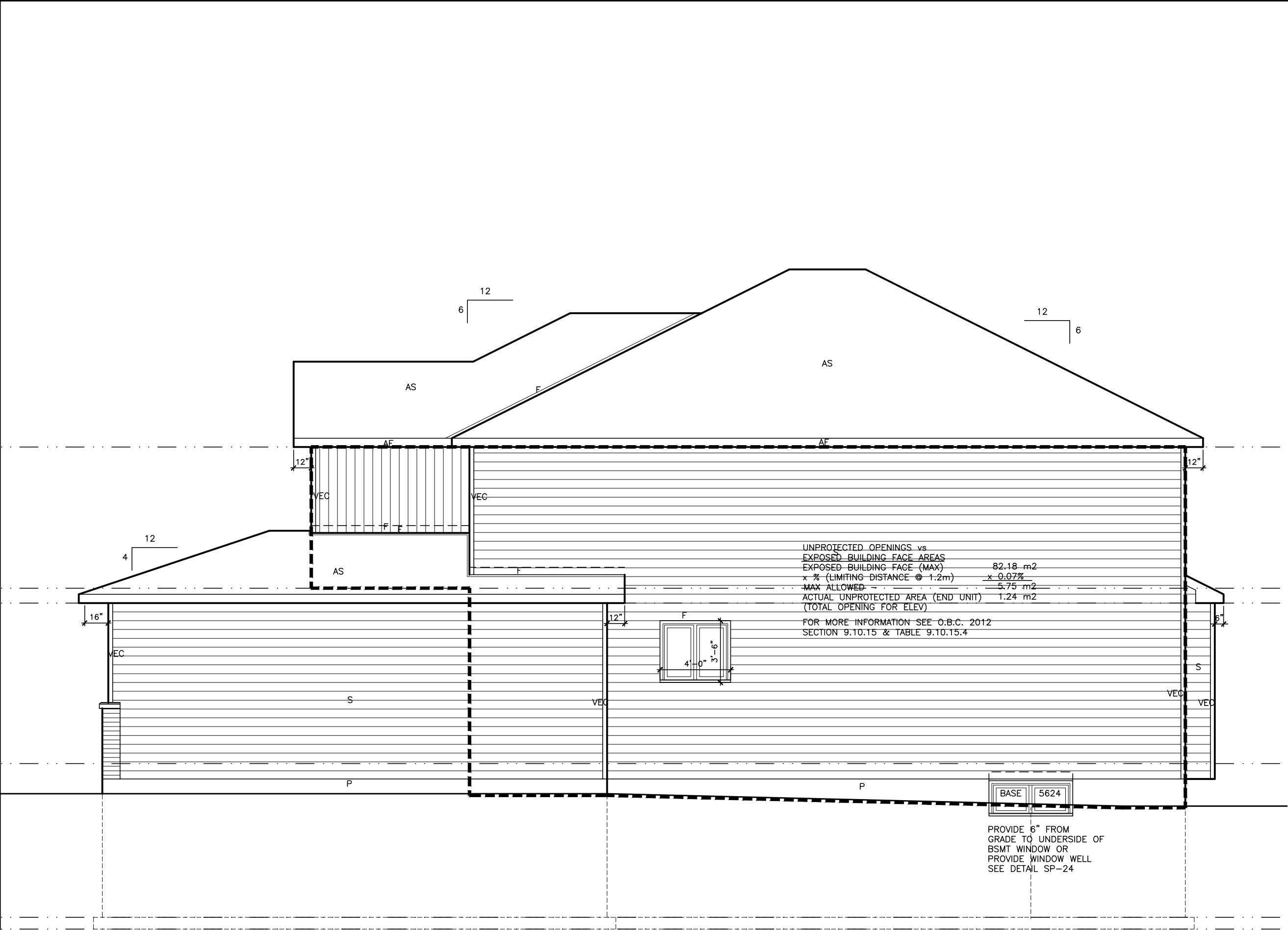
2.	AS PER STRUCTURAL		
1.	STANDARD DRAWINGS	02/11/15	SI
NO	DESCRIPTION	DATE	BY



TITLE: Right Side Elevation B

ACAD FILE: SCALE: 3/16" = 1'-0"

830-The Butler
2012 Footprint
(STANDARD DRAWINGS)
A-3b



UNPROTECTED OPENINGS vs
EXPOSED BUILDING FACE AREAS
EXPOSED BUILDING FACE (MAX) 82.18 m2
x % (LIMITING DISTANCE @ 1.2m) x 0.07%
MAX ALLOWED 5.75 m2
ACTUAL UNPROTECTED AREA (END UNIT) 1.24 m2
(TOTAL OPENING FOR ELEV)
FOR MORE INFORMATION SEE O.B.C. 2012
SECTION 9.10.15 & TABLE 9.10.15.4

LOT _____ XXxx

DATE _____ XX/XX/XX

THIS DRAWINGS IS TO BE USED IN CONJUNCTION WITH SCHEDULE B-1A AND MAY SHOW ONLY SOME OF THE CHANGES DETAILED ON THAT DOCUMENT. SHOULD THE DRAWINGS NOT SHOW ALL ITEMS CONTAINED ON A SCHEDULE OR MISS OTHER ITEMS ALTOGETHER, THE SCHEDULE IS CONSIDERED THE GOVERNING DOCUMENT.
FLOORS CONT

I SCOTT IRWIN BCIN 20765 HAVE REVIEWED AND TAKE RESPONSIBILITY FOR DESIGN ACTIVITIES RELATING TO, HOUSE & SMALL BUILDINGS _____.

2012 OBC DRAWINGS

2.	AS PER STRUCTURAL		
1.	STANDARD DRAWINGS	02/11/15	SI
NO	DESCRIPTION	DATE	BY



TITLE: Right Side Elevation C

ACAD FILE: SCALE: 3/16" = 1'-0"

DWG. 830-The Butler 2012 Footprint (STANDARD DRAWINGS) A-3c



LOT _____ XXxx

DATE _____ XX/XX/XX

THIS DRAWINGS IS TO BE USED IN CONJUNCTION WITH SCHEDULE B-1A AND MAY SHOW ONLY SOME OF THE CHANGES DETAILED ON THAT DOCUMENT. SHOULD THE DRAWINGS NOT SHOW ALL ITEMS CONTAINED ON A SCHEDULE OR MISS OTHER ITEMS ALTOGETHER, THE SCHEDULE IS CONSIDERED THE GOVERNING DOCUMENT.
FLOORS CONT

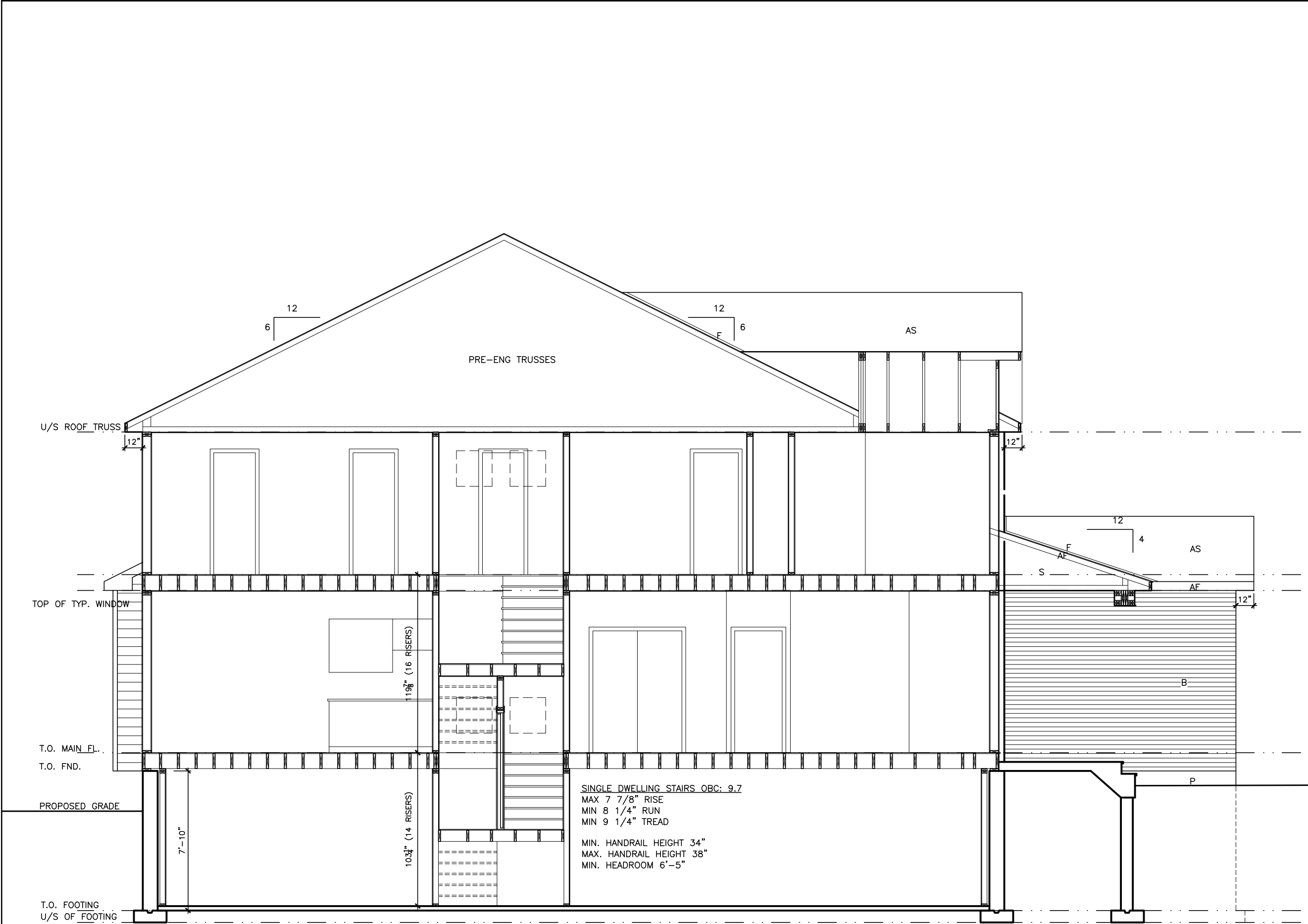
I SCOTT IRWIN BCIN 20765 HAVE REVIEWED AND TAKE RESPONSIBILITY FOR DESIGN ACTIVITIES RELATING TO, HOUSE & SMALL BUILDINGS _____.

2012 OBC DRAWINGS

2.	AS PER STRUCTURAL		
1.	STANDARD DRAWINGS	02/11/15	SI
NO	DESCRIPTION	DATE	BY



TITLE: Elevation Rear	
ACAD FILE:	SCALE: 3/16" = 1'-0"
830-The Butler 2012 Footprint (STANDARD DRAWINGS)	DWG. A-4



BUILDING SECTION

LOT _____ XXxx

DATE _____ XX/XX/XX

THIS DRAWINGS IS TO BE USED IN CONJUNCTION WITH SCHEDULE B-1A AND MAY SHOW ONLY SOME OF THE CHANGES DETAILED ON THAT DOCUMENT. SHOULD THE DRAWINGS NOT SHOW ALL ITEMS CONTAINED ON A SCHEDULE OR MISS OTHER ITEMS ALTOGETHER, THE SCHEDULE IS CONSIDERED THE GOVERNING DOCUMENT. FLOORS CONT

I SCOTT IRWIN BCIN 20765 HAVE REVIEWED AND TAKE RESPONSIBILITY FOR DESIGN ACTIVITIES RELATING TO, HOUSE & SMALL BUILDINGS _____.

2012 OBC DRAWINGS

2.	AS PER STRUCTURAL		
1.	STANDARD DRAWINGS	02/11/15	SI
NO	DESCRIPTION	DATE	BY



TITLE: Section	
ACAD FILE:	SCALE: 3/16" = 1'-0"
830-The Butler 2012 Footprint (STANDARD DRAWINGS)	DWG. A-5

THIS DRAWINGS IS TO BE USED IN CONJUNCTION WITH SCHEDULE B-1A AND MAY SHOW ONLY SOME OF THE CHANGES DETAILED ON THAT DOCUMENT. SHOULD THE DRAWINGS NOT SHOW ALL ITEMS CONTAINED ON A SCHEDULE OR MISS OTHER ITEMS AL TOGETHER, THE SCHEDULE IS CONSIDERED THE GOVERNING DOCUMENT.

FLOORS CONT

I SCOTT IRWIN BCIN 20765 HAVE REVIEWED AND TAKE
RESPONSIBILITY FOR DESIGN ACTIVITIES RELATING TO,
HOUSE & SMALL BUILDINGS _____.

STRUCTURAL FRAMING SCHEDULE

STEEL LINTEL
S1 - L 90x90x6
S2 - L 90x90x8
S3 - L 100x90x8
S4 - L 125x90x8
S5 - L 125x90x10
S6 - L 200x100x12
S7 - L 150x100x10 (200mm BEARING)

WOOD LINTEL
L1 - (2)38x235 w/ 12.7 PLYWOOD SPACER
L2 - (2)38x235
L3 - (3)38x235
L4 - (3)38x235 w/ 2-12.7 PLYWOOD SPACER
L5 - & 2 ROW OF 90mm SPIRAL @ 200 o/c
(3)38x235 w/ 2-12.7 PLYWOOD SPACER
& 2 ROW OF 90mm SPIRAL @ 200 o/c
L6 - (2)45x240 LL 2.0e
L7 - (3)45x240 LL 2.0e

POSTS
P1 - 75Ø STEEL TELEPOST
P2 - (2)38x89 or (2)38x140
P3 - (3)38x89 or (3)38x140
P4 - (4)38x89 or (4)38x140
P5 - (5)38x89 or (5)38x140
P6 - (6)38x89 or (6)38x140
P13 - HSS 88.9x88.9x3.18 + 100x200x12 T&B PL.
(*)
P14 - HSS 89x89x4.8 + 100x200x12 T&B PL.
(*)
P15 - HSS 76.2x76.2x4.78 + 100x180x12 T&B PL.
(*)
P16 - HSS 76.2x76.2x4.78 + 130x130x12 T&B PL.
(*)
P17 - HSS 73 O.D. x4.8 + 100x180x12PL B PL.
+ 130x160x10 T PL. (*)
(*) - 2-12Ø ANCH (WHERE ANCH PL NOT USED)

ALL FOOTINGS 600x200 DP. UNLESS NOTED
SOIL: 100 KPA

2012 OBC DRAWINGS

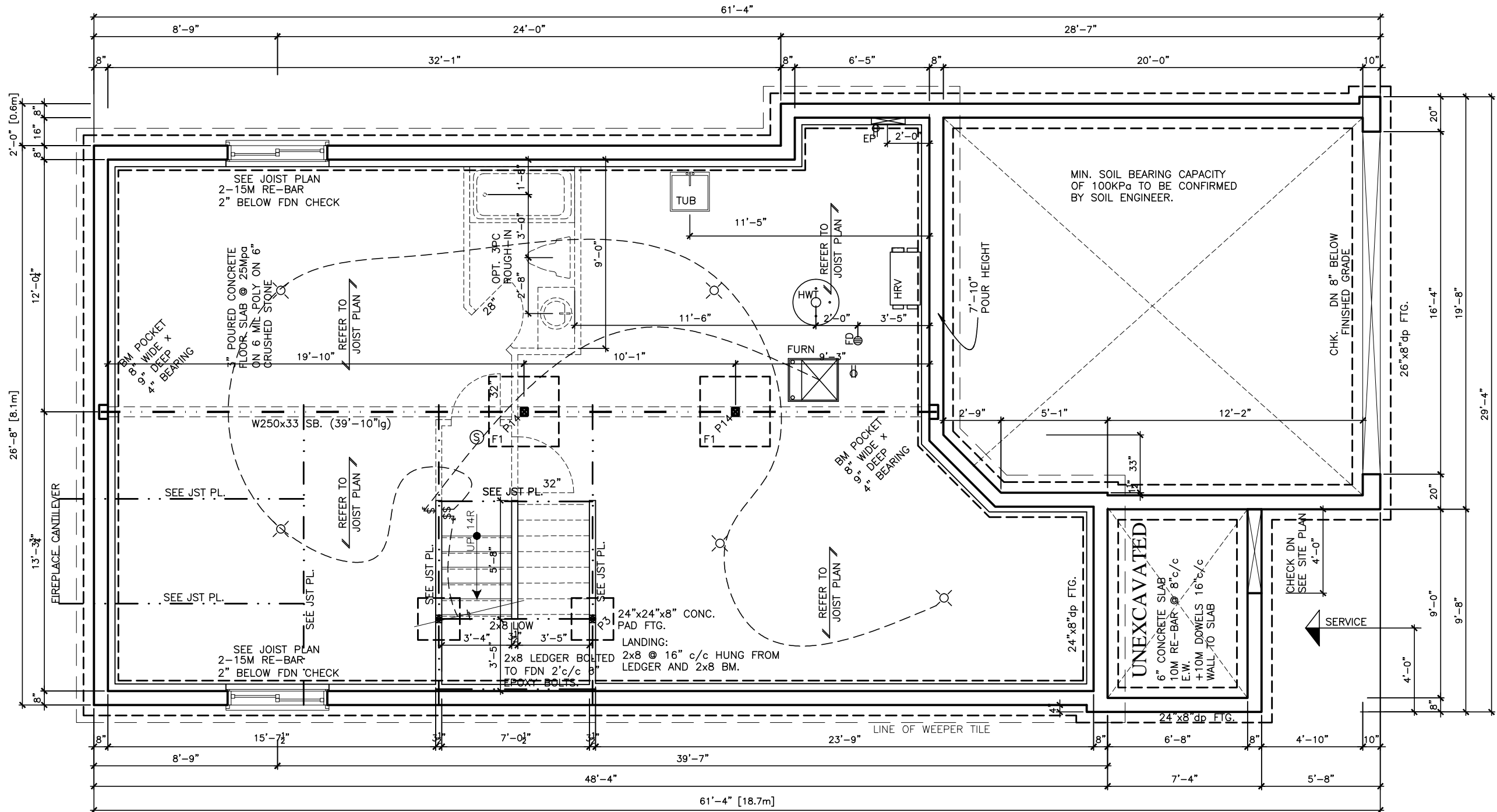
2.	AS PER STRUCTURAL		
1.	STANDARD DRAWINGS	11/02/15	SI
NO	DESCRIPTION	DATE	BY

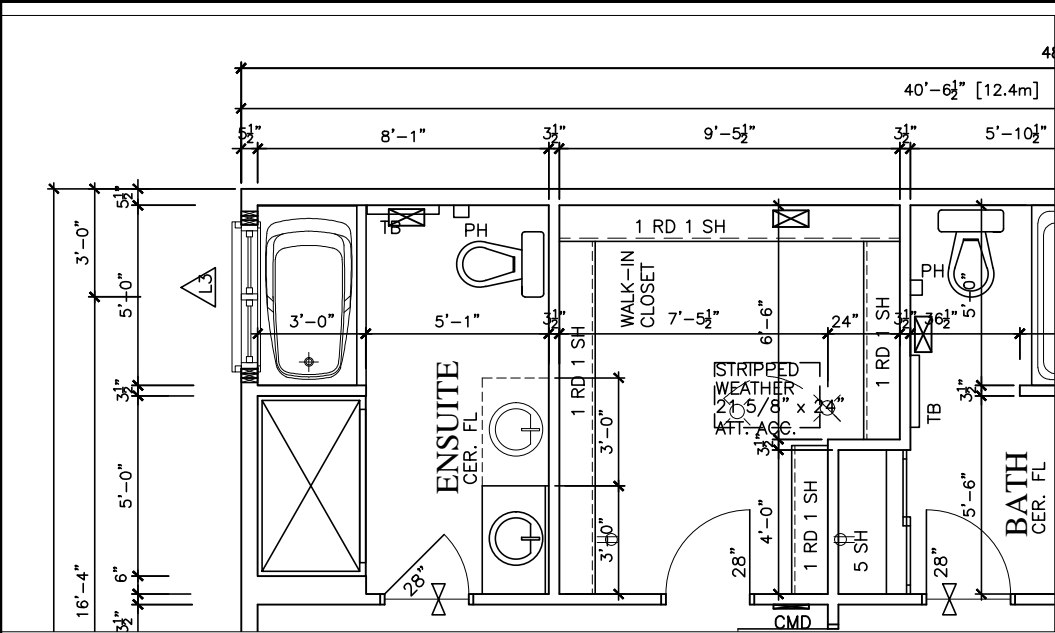


TITLE: BASEMENT FLOOR PLAN

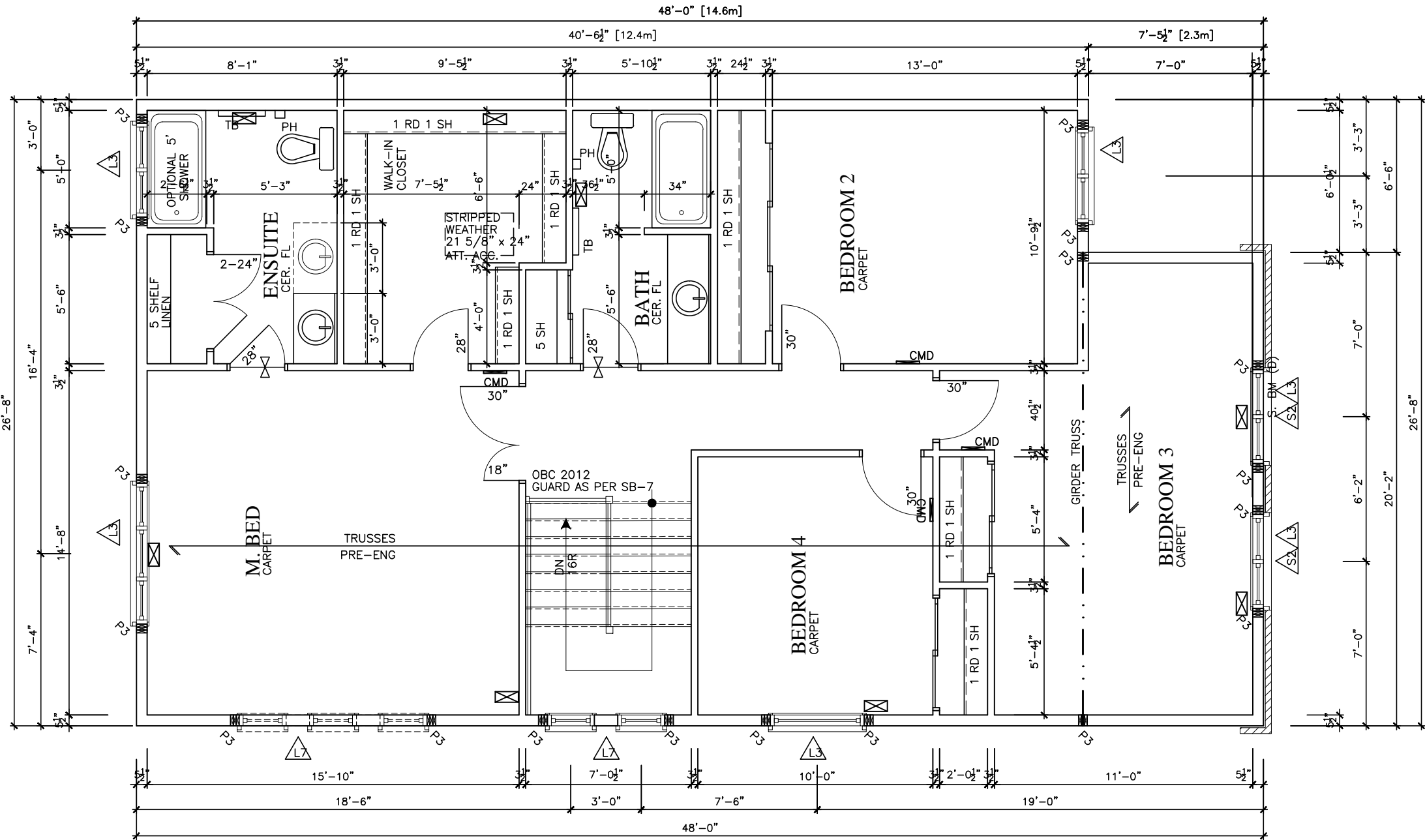
ACAD FILE:	SCALE: 3/16" = 1'-0"
------------	-------------------------

830-The Butler
2012 Footprint
(STANDARD DRAWINGS)





OPTIONAL. 4PC ENSUITE



SECOND FLOOR ELEVATION "A"

LOT **XXxx**

DATE **XX/XX/XX**

THIS DRAWINGS IS TO BE USED IN CONJUNCTION WITH SCHEDULE B-1A AND MAY SHOW ONLY SOME OF THE CHANGES DETAILED ON THAT DOCUMENT. SHOULD THE DRAWINGS NOT SHOW ALL ITEMS CONTAINED ON A SCHEDULE OR MISS OTHER ITEMS ALTOGETHER, THE SCHEDULE IS CONSIDERED THE GOVERNING DOCUMENT.
FLOORS CONT

I SCOTT IRWIN BCIN 20765 HAVE REVIEWED AND TAKE RESPONSIBILITY FOR DESIGN ACTIVITIES RELATING TO, HOUSE & SMALL BUILDINGS _____.

STRUCTURAL FRAMING SCHEDULE

- STEEL LINTEL
- S1 - L 90x90x8
 - S2 - L 90x90x8
 - S3 - L 100x90x8
 - S4 - L 125x90x8
 - S5 - L 125x90x10
 - S6 - L 200x100x12
 - S7 - L 150x100x10 (200mm BEARING)
- WOOD LINTEL
- L1 - (2)38x235 w/ 12.7 PLYWOOD SPACER
 - L2 - (2)38x235
 - L3 - (3)38x235
 - L4 - (3)38x235 w/ 2-12.7 PLYWOOD SPACER
 - L5 - (3)38x286 w/ 2-12.7 PLYWOOD SPACER
 - L6 - (2)45x240 LL 2.0e
 - L7 - (3)45x240 LL 2.0e
- POSTS
- P1 - 75# STEEL TELEPOST
 - P2 - (2)38x89 or (2)38x140
 - P3 - (3)38x89 or (3)38x140
 - P4 - (4)38x89 or (4)38x140
 - P5 - (5)38x89 or (5)38x140
 - P6 - (6)38x89 or (6)38x140
 - P13 - HSS 88.9x88.9x3.18 + 100x200x12 T&B PL.
 - P14 - HSS 89x89x4.8 + 100x200x12 T&B PL.
 - P15 - HSS 76.2x76.2x4.78 + 100x180x12 T&B PL.
 - P16 - HSS 76.2x76.2x4.78 + 130x130x12 T&B PL.
 - P17 - HSS 73 O.D. x4.8 + 100x180x12PL B PL.
- (*) - 2-12# ANCH (WHERE ANCH PL. NOT USED)
- ALL FOOTINGS 600x200 DP. UNLESS NOTED
- SOIL: 100 KPA

2012 OBC DRAWINGS

AS PER STRUCTURAL		
STANDARD DRAWINGS	02/11/15	SI
NO DESCRIPTION	DATE	BY



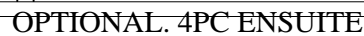
Valecraft
Homes Ltd.

TITLE:
2nd FLOOR PLAN - ELEVATION A

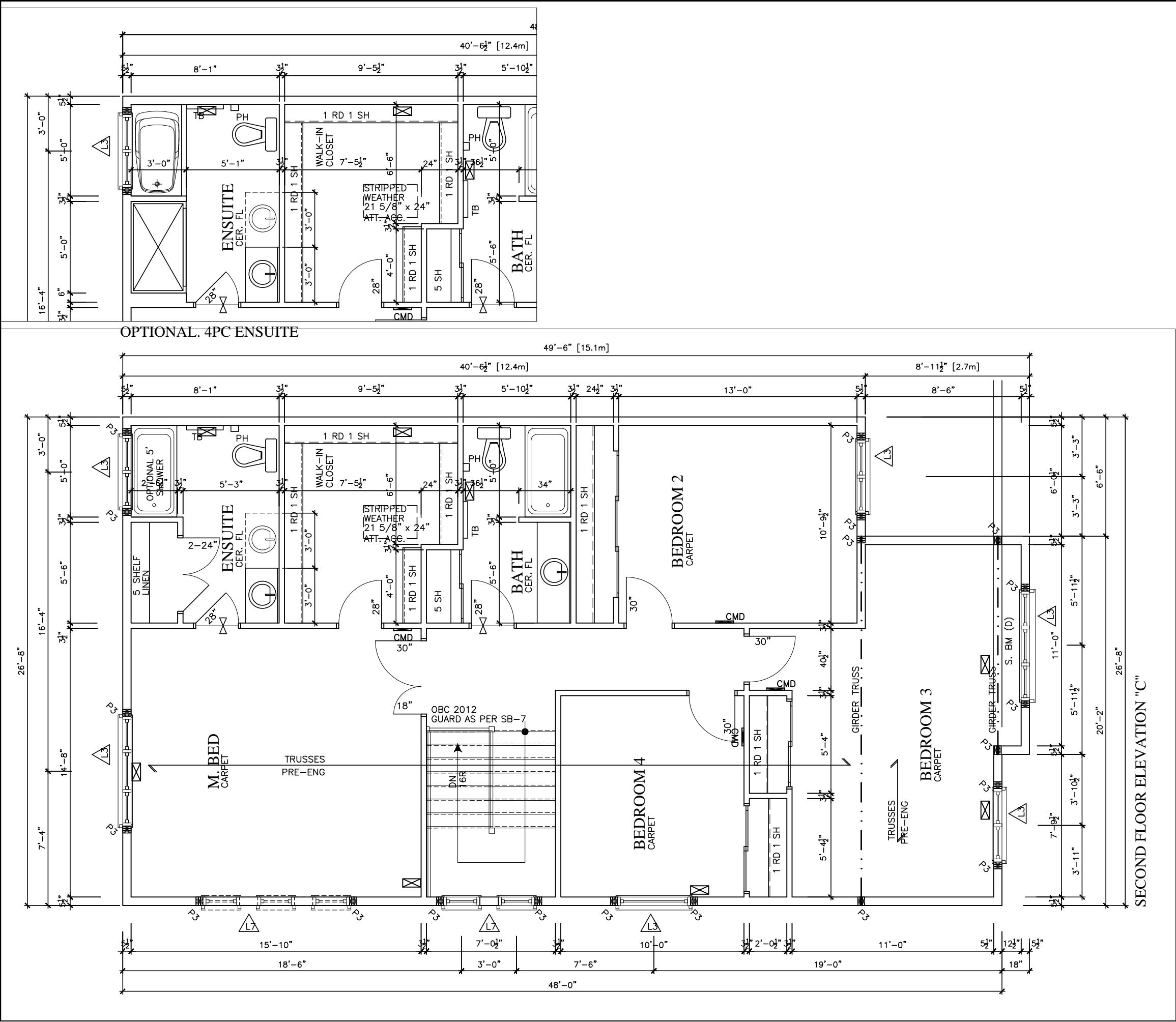
ACAD FILE: SCALE:
3/16" = 1'-0"

830-The Butler
2012 Footprint
(STANDARD DRAWINGS)

DWG.
A-8



DWG.	A-8b
------	------



LOT

XXxx

DATE

XX/XX/XX

THIS DRAWINGS IS TO BE USED IN CONJUNCTION WITH SCHEDULE B-1A AND MAY SHOW ONLY SOME OF THE CHANGES DETAILED ON THAT DOCUMENT. SHOULD THE DRAWINGS NOT SHOW ALL ITEMS CONTAINED ON A SCHEDULE OR MISS OTHER ITEMS ALTOGETHER, THE SCHEDULE IS CONSIDERED THE GOVERNING DOCUMENT.

FLOORS CONT

I SCOTT IRWIN BCIN 20765 HAVE REVIEWED AND TAKE RESPONSIBILITY FOR DESIGN ACTIVITIES RELATING TO, HOUSE & SMALL BUILDINGS

STRUCTURAL FRAMING SCHEDULE

STEEL LINTEL
S1 - L 90x90x8
S2 - L 90x90x8
S3 - L 100x90x8
S4 - L 125x90x8
S5 - L 125x90x10
S6 - L 200x100x12
S7 - L 150x100x10 (200mm BEARING)

WOOD LINTEL
L1 - (2)38x235 w/ 12.7 PLYWOOD SPACER
L2 - (2)38x235
L3 - (3)38x235
L4 - (3)38x235 w/ 2-12.7 PLYWOOD SPACER
L5 - (3)38x286 w/ 2-12.7 PLYWOOD SPACER
L6 - (2)45x240 LL 2.0e
L7 - (3)45x240 LL 2.0e

POSTS
P1 - 75# STEEL TELEPOST
P2 - (2)38x89 or (2)38x140
P3 - (3)38x89 or (3)38x140
P4 - (4)38x89 or (4)38x140
P5 - (5)38x89 or (5)38x140
P6 - (6)38x89 or (6)38x140
P13 - HSS 88.9x88.9x3.18 + 100x200x12 T&B PL.
P14 - HSS 89x89x4.8 + 100x200x12 T&B PL.
P15 - HSS 76.2x76.2x4.78 + 100x180x12 T&B PL.
P16 - HSS 76.2x76.2x4.78 + 130x130x12 T&B PL.
P17 - HSS 73 O.D. x4.8 + 100x180x12PL B PL.
+ 130x160x10 T PL. (*)
(*) - 2-12# ANCH (WHERE ANCH PL. NOT USED)
ALL FOOTINGS 600x200 DP. UNLESS NOTED
SOIL: 100 KPA

2012 OBC DRAWINGS

AS PER STRUCTURAL			
STANDARD DRAWINGS	02/11/15	SI	
NO DESCRIPTION	DATE	BY	

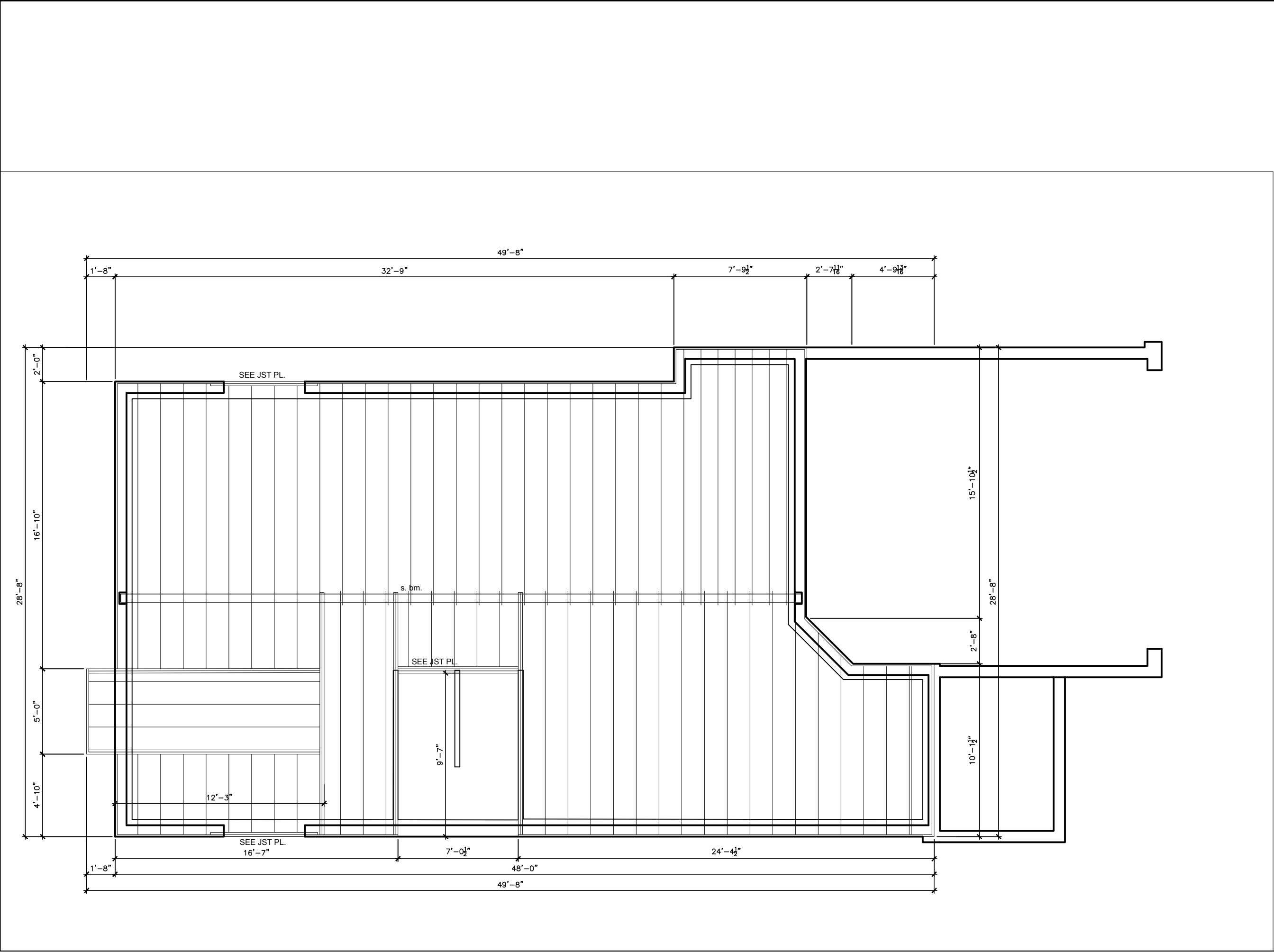
Valecraft

Homes Ltd.

TITLE:
2nd FLOOR PLAN - ELEVATION C

ACAD FILE:
830-The Butler
2012 Footprint
(STANDARD DRAWINGS)

SCALE:
3/16" = 1'-0"
DWG:
A-8c



LOT _____ XXxx

DATE _____ XX/XX/XX

THIS DRAWINGS IS TO BE USED IN CONJUNCTION WITH SCHEDULE B-1A AND MAY SHOW ONLY SOME OF THE CHANGES DETAILED ON THAT DOCUMENT. SHOULD THE DRAWINGS NOT SHOW ALL ITEMS CONTAINED ON A SCHEDULE OR MISS OTHER ITEMS ALTOGETHER, THE SCHEDULE IS CONSIDERED THE GOVERNING DOCUMENT. FLOORS CONT

I SCOTT IRWIN BCIN 20765 HAVE REVIEWED AND TAKE RESPONSIBILITY FOR DESIGN ACTIVITIES RELATING TO, HOUSE & SMALL BUILDINGS _____.

2012 OBC DRAWINGS

2.	AS PER STRUCTURAL		
1.	STANDARD DRAWINGS	02/11/15	SI
NO.	DESCRIPTION	DATE	BY



TITLE: 1st FLOOR PLAN	
ACAD FILE:	SCALE: 3/16" = 1'-0"
830-The Butler 2012 Footprint (STANDARD DRAWINGS)	DWG. J-1

THIS DRAWINGS IS TO BE USED IN CONJUNCTION WITH SCHEDULE B-1A AND MAY SHOW ONLY SOME OF THE CHANGES DETAILED ON THAT DOCUMENT. SHOULD THE DRAWINGS NOT SHOW ALL ITEMS CONTAINED ON A SCHEDULE OR MISS OTHER ITEMS ALTOGETHER, THE SCHEDULE IS CONSIDERED THE GOVERNING DOCUMENT.

FLOORS CONT

I SCOTT IRWIN BCIN 20765 HAVE REVIEWED AND TAKE
RESPONSIBILITY FOR DESIGN ACTIVITIES RELATING TO,
HOUSE & SMALL BUILDINGS _____.

STRUCTURAL FRAMING SCHEDULE

STEEL LINTEL
24 1 22

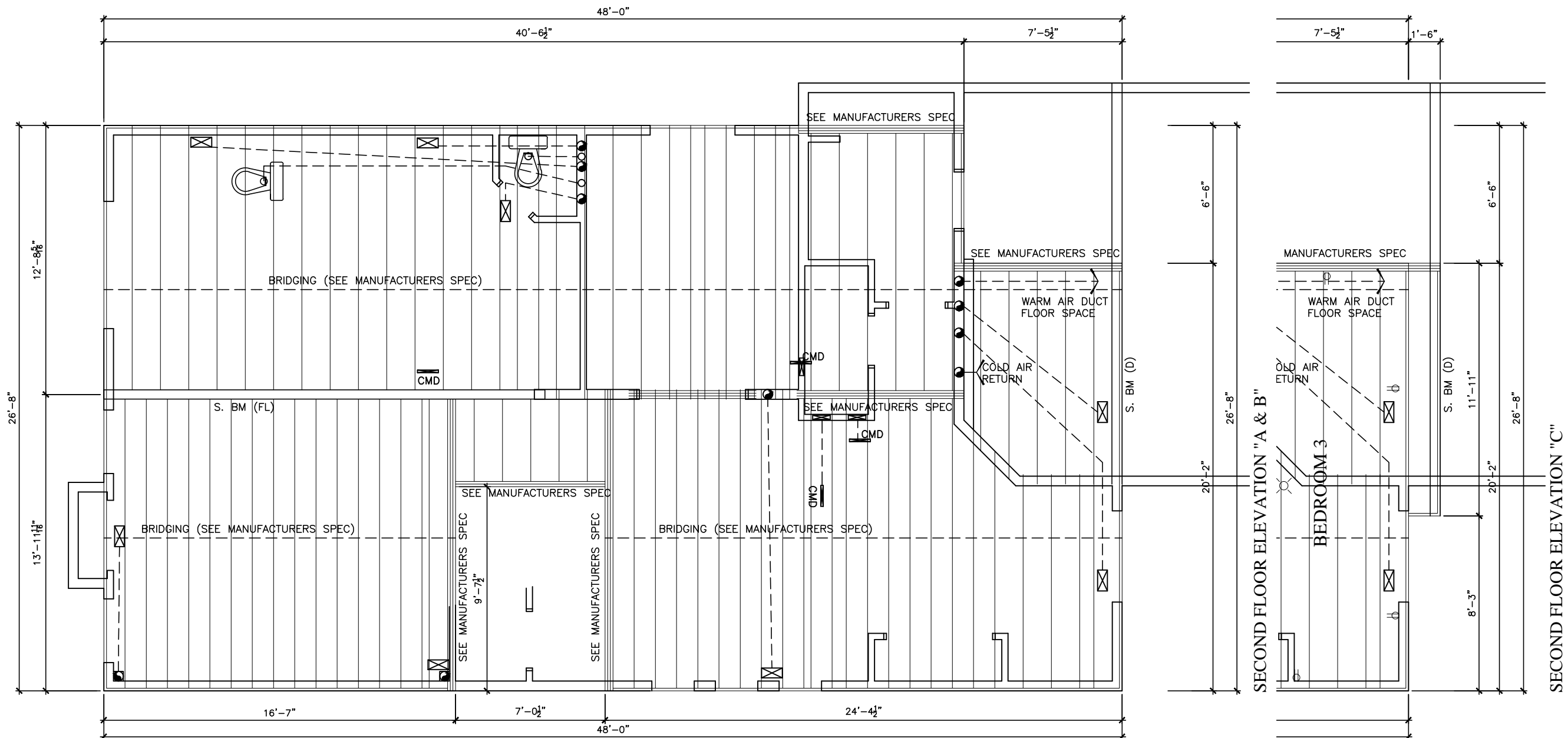
- S1 - L 90x90x6
S2 - L 90x90x8
S3 - L 100x90x8
S4 - L 125x90x8
S5 - L 125x90x10
S6 - L 200x100x12
S7 - L 150x100x10 (200mm BEARING)

WOOD LINTEL
1.1 (0)30

- L1 - (2)38x235 w/ 12.7 PLYWOOD SPACER
L2 - (2)38x235
L3 - (3)38x235
L4 - (3)38x235 w/ 2-12.7 PLYWOOD SPACER
& 2 ROW OF 90mm SPIRAL @ 200 o/c
L5 - (3)38x286 w/ 2-12.7 PLYWOOD SPACER
& 2 ROW OF 90mm SPIRAL @ 200 o/c
L6 - (2)45x240 LL 2.0e
L7 - (3)45x240 LL 2.0e

POSTS

- P1 - 75# STEEL TELEPOST
P2 - (2)38x89 or (2)38x140
P3 - (3)38x89 or (3)38x140
P4 - (4)38x89 or (4)38x140
P5 - (5)38x89 or (5)38x140
P6 - (6)38x89 or (6)38x140
P13 - HSS 88.9x89.3x.18 + 100x200x12 T&B PL.
(*)
P14 - HSS 89x89x4.8 + 100x200x12 T&B PL.
(*)
P15 - HSS 76.2x76.2x4.78 + 100x180x12 T&B PL.
(*)
P16 - HSS 76.2x76.2x4.78 + 130x130x12 T&B PL.
(*)
P17 - HSS 73 O.D. x4.8 + 100x180x12PL B PL.
+ 130x160x10 T PL. (*)
(*) - 2-12# ANCH (WHERE ANCH PL NOT USED)
ALL FOOTINGS 600x200 DP. UNLESS NOTED
SOIL: 100 KPA



SECOND FLOOR ELEVATION "A & B"

SECOND FLOOR ELEVATION "C"

2012 OBC DRAWINGS

AS PER STRUCTURAL		
STANDARD DRAWINGS	02/11/15	SI
NO DESCRIPTION	DATE	BY



Valecraft

TITLE:

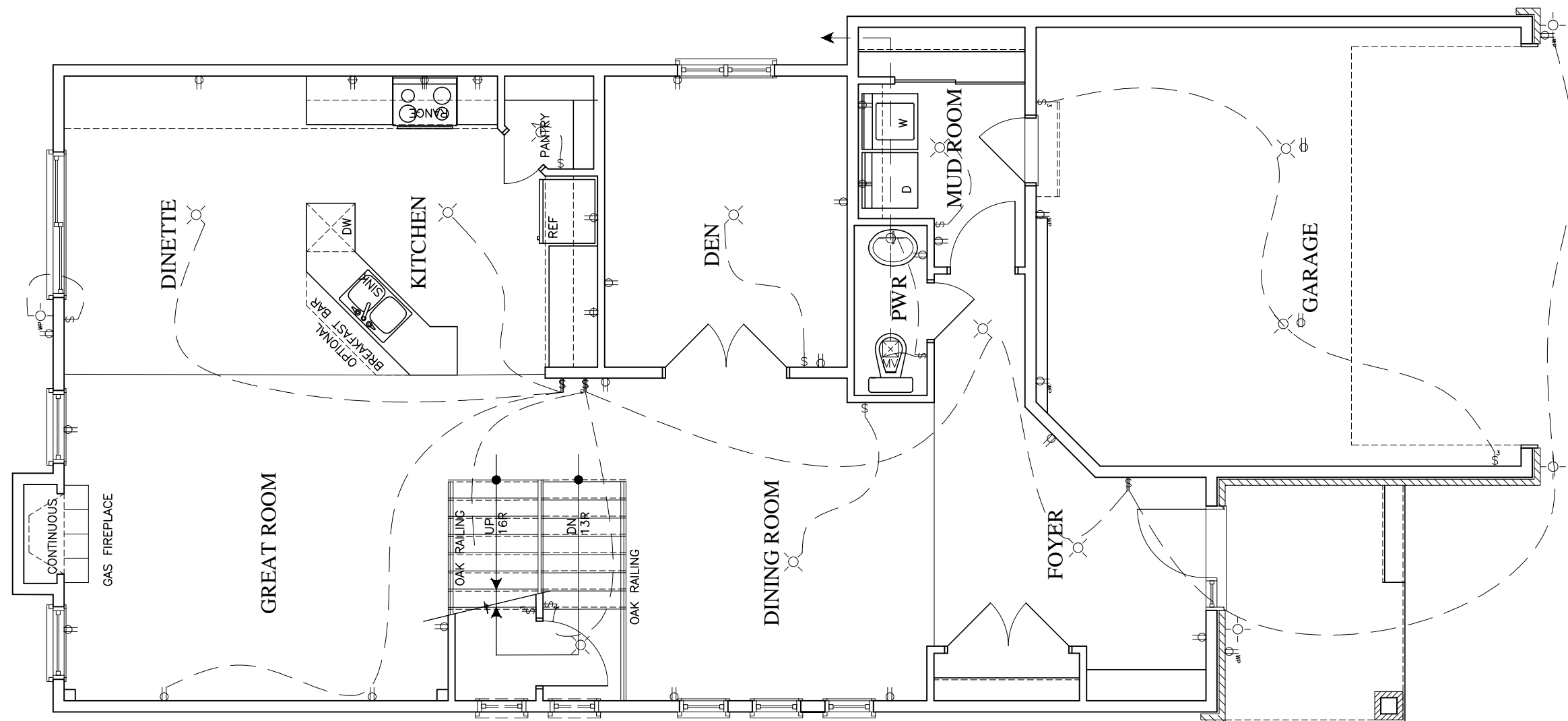
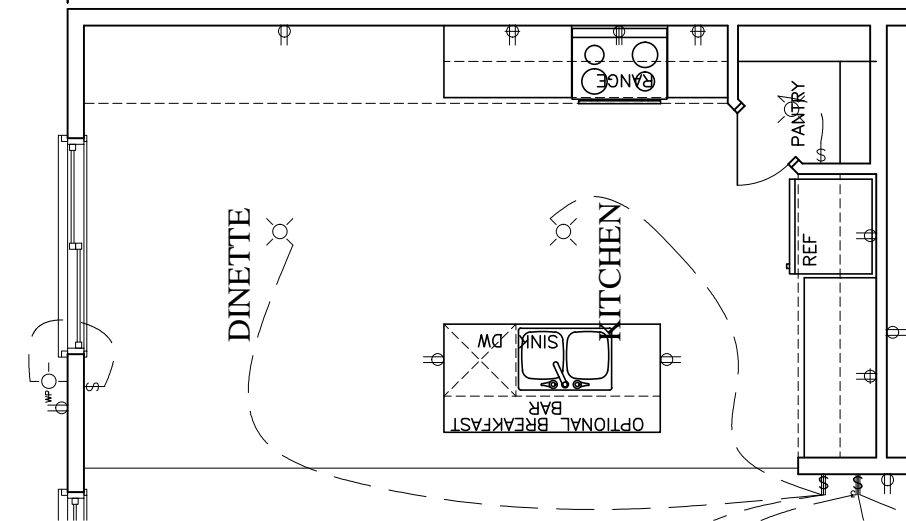
2nd FLOOR JOIST PLAN

ACAD FILE:	SCALE: 3/16" = 1'-0"
------------	-------------------------

830-The Butler 2012 Footprint

(STANDARD DRAWINGS)

J-2



LOT XXxx

DATE XX/XX/XX

THIS DRAWINGS IS TO BE USED IN CONJUNCTION WITH SCHEDULE B-1A AND MAY SHOW ONLY SOME OF THE CHANGES DETAILED ON THAT DOCUMENT. SHOULD THE DRAWINGS NOT SHOW ALL ITEMS CONTAINED ON A SCHEDULE OR MISS OTHER ITEMS ALTOGETHER, THE SCHEDULE IS CONSIDERED THE GOVERNING DOCUMENT.

I SCOTT IRWIN BCIN 20765 HAVE REVIEWED AND TAKE
RESPONSIBILITY FOR DESIGN ACTIVITIES RELATING TO,
HOUSE & SMALL BUILDINGS _____.

2012 OBC DRAWINGS

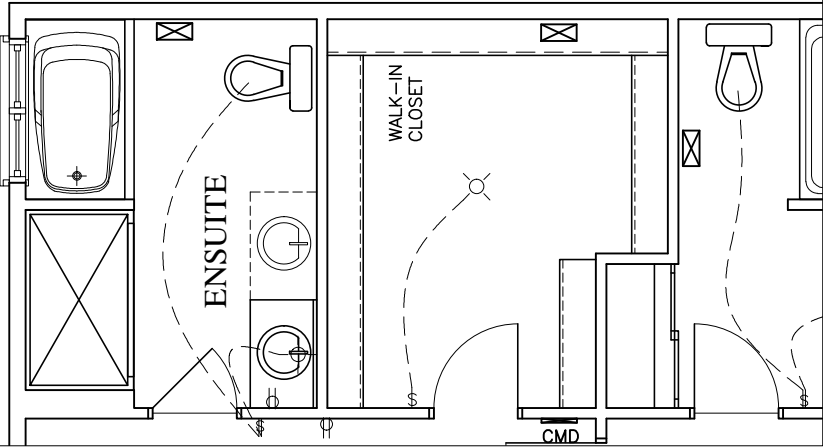
2.	AS PER STRUCTURAL		
1.	STANDARD DRAWINGS	02/11/15	SI
NO	DESCRIPTION	DATE	BY



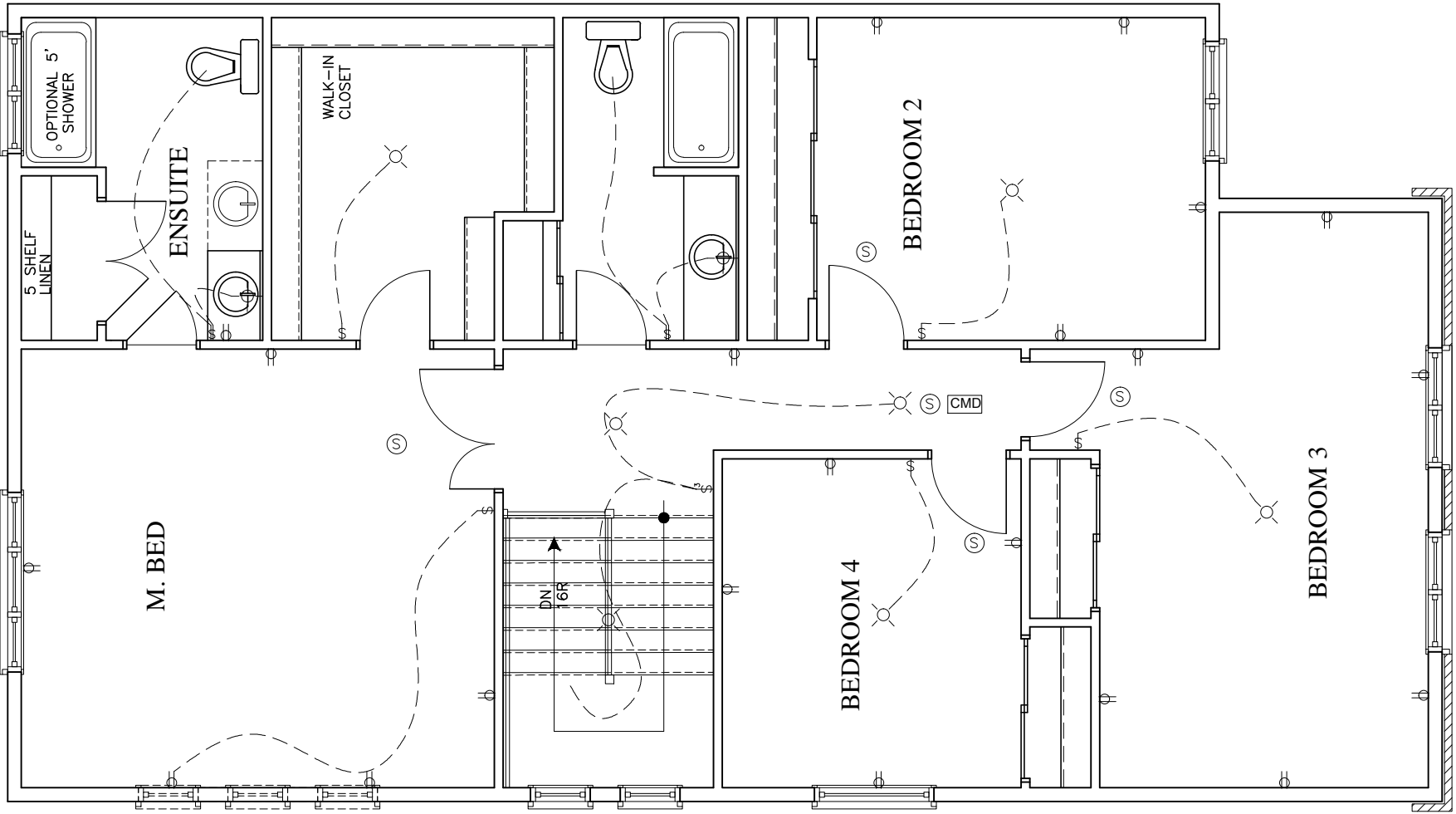
TITLE:

1st FLOOR PLAN

ACAD FILE:	SCALE: 3/16" = 1'-0"
830-The Butler 2012 Footprint (STANDARD DRAWINGS)	DWG. E-2



OPTIONAL. 4PC ENSUITE



SECOND FLOOR ELEVATION "A"

LOT **XXxx**

DATE **XX/XX/XX**

THIS DRAWINGS IS TO BE USED IN CONJUNCTION WITH SCHEDULE B-1A AND MAY SHOW ONLY SOME OF THE CHANGES DETAILED ON THAT DOCUMENT. SHOULD THE DRAWINGS NOT SHOW ALL ITEMS CONTAINED ON A SCHEDULE OR MISS OTHER ITEMS AL TOGETHER, THE SCHEDULE IS CONSIDERED THE GOVERNING DOCUMENT.
FLOORS CONT

I SCOTT IRWIN BCIN 20765 HAVE REVIEWED AND TAKE RESPONSIBILITY FOR DESIGN ACTIVITIES RELATING TO, HOUSE & SMALL BUILDINGS _____.

STRUCTURAL FRAMING SCHEDULE

- STEEL LINTEL**
S1 - L 90x90x8
S2 - L 90x90x8
S3 - L 100x90x8
S4 - L 125x90x8
S5 - L 125x90x10
S6 - L 200x100x12
S7 - L 150x100x10 (200mm BEARING)
- WOOD LINTEL**
L1 - (2)38x235 w/ 12.7 PLYWOOD SPACER
L2 - (2)38x235
L3 - (3)38x235
L4 - (3)38x235 w/ 2-12.7 PLYWOOD SPACER
L5 - (3)38x286 w/ 2-12.7 PLYWOOD SPACER & 2 ROW OF 90mm SPIRAL @ 200 o/c
L6 - (2)45x240 LL 2.0e
L7 - (3)45x240 LL 2.0e
- POSTS**
P1 - 75# STEEL TELEPOST
P2 - (2)38x89 or (2)38x140
P3 - (3)38x89 or (3)38x140
P4 - (4)38x89 or (4)38x140
P5 - (5)38x89 or (5)38x140
P6 - (6)38x89 or (6)38x140
P13 - HSS 88.9x88.9x3.18 + 100x200x12 T&B PL.
P14 - HSS 89x89x4.8 + 100x200x12 T&B PL.
P15 - HSS 76.2x76.2x4.78 + 100x180x12 T&B PL.
P16 - HSS 76.2x76.2x4.78 + 130x130x12 T&B PL.
P17 - HSS 73 O.D. x4.8 + 100x180x12PL B PL. + 130x160x10 T PL. (*)
(*) - 2-12# ANCH (WHERE ANCH PL. NOT USED)
ALL FOOTINGS 600x200 DP. UNLESS NOTED
SOIL: 100 KPA

2012 OBC DRAWINGS

AS PER STRUCTURAL			
STANDARD DRAWINGS	02/11/15	SI	
NO	DESCRIPTION	DATE	BY



TITLE:
2nd FLOOR PLAN - ELEVATION A

ACAD FILE:	SCALE: 3/16" = 1'-0"
830-The Butler 2012 Footprint (STANDARD DRAWINGS)	DWG. A-8