



A Division of the S&S Bolton Group  
www.ssbolton.com

Tel: (613) 748-0432  
Fax: (613) 748-0355

## SITE INSTRUCTIONS

Ref: OR2719 Rev.02

### Customer:

Builder: VALECRAFT HOMES (2019) LTD.  
Project: Embrun - Place St Thomas  
Lot: Singles Ph 3 0018  
Closing Date: 08/06/2020  
Salesperson: Jason Thompson (OR)  
Date: 10/30/2019

Location	Qty	Product / Installation Details	Plan Code
Great Room	1.00	(4) Port Plate - (1) Phone CAT5e & (2) Data CAT5e & (1) Cable RG6 Outlets (4) Port Plate - (1) Phone CAT5e & (2) Data CAT5e & (1) Cable RG6 Outlets - Location as shown on floor plan	
Master Bedroom	1.00	(4) Port Plate - (1) Phone CAT5e & (2) Data CAT5e & (1) Cable RG6 Outlets (4) Port Plate - (1) Phone CAT5e & (2) Data CAT5e & (1) Cable RG6 Outlets - Location as shown on floor plan	
Bedroom #2	1.00	(4) Port Plate - (1) Phone CAT5e & (2) Data CAT5e & (1) Cable RG6 Outlets (4) Port Plate - (1) Phone CAT5e & (2) Data CAT5e & (1) Cable RG6 Outlets - Location as shown on floor plan	
Bedroom #3	1.00	(4) Port Plate - (1) Phone CAT5e & (2) Data CAT5e & (1) Cable RG6 Outlets (4) Port Plate - (1) Phone CAT5e & (2) Data CAT5e & (1) Cable RG6 Outlets - Location as shown on floor plan	
Bedroom #4	1.00	(4) Port Plate - (1) Phone CAT5e & (2) Data CAT5e & (1) Cable RG6 Outlets (4) Port Plate - (1) Phone CAT5e & (2) Data CAT5e & (1) Cable RG6 Outlets - Location as shown on floor plan	
N/A	1.00	2" PVC Conduit from Basement to Attic 2" PVC Conduit from Basement to Attic	
N/A	1.00	Vacuum Rough-In Outlet Vacuum Rough-In Outlets	
Various Locations	4.00	Convert Standard Phone CAT5e to Data CAT5e Outlet Convert Standard Phone CAT5e to Data CAT5e Outlet - for future security cameras. Terminate next to media panel in Basement	
Great Room	1.00	Off-Set 2" Conduit w/ Wall Plates Off-Set 2" Conduit w/ Wall Plates - Location as shown on floor plan - Conduit installed in-wall to conceal wires connected to wall mounted TV - approx 72 inches from floor above fire place beside plug	
Great Room	3.00	(1) Paradigm 6.5" Angled In-Ceiling Speaker (H65-A) (1) Paradigm 6.5" Angled In-Ceiling Speaker (H65-A) - Location as shown on floor plan - Includes ceiling bracket and wiring - Does not include A/V receiver	

Phone: (613) 748-0432 | Fax: (613) 748-0355 | Email: info@orbitalti.com | Website: www.orbitalti.com

5 4 1 1 Canotek Road, Ottawa, Ontario K1J 9M3









Printed By: Jason Thompson (OR) - Page: 1



A Division of the S&S Bolton Group  
www.ssbolton.com

Tel: (613) 748-0432  
Fax: (613) 748-0355

PST3 18

Location	Qty	Product / Installation Details	Plan Code
Great Room	2.00	(1) Paradigm 6.5" In-Ceiling Speaker (H65-R) (1) Paradigm 6.5" In-Ceiling Speaker (H65-R) - Location as shown on floor plan - Includes ceiling bracket and wiring - Does not include AV receiver	
Great Room	1.00	Master Jack - Speaker wiring unterminated Master Jack - Location as shown on floor plan - Speaker wiring unterminated	
2nd Floor Ceiling	2.00	(1) Klipsch 6.5" Pivoting In-Ceiling Speaker (KLI-DS160CDT) (1) Klipsch 6.5" Pivoting In-Ceiling Speaker (KLI-DS160CDT) - Location as shown on floor plan - Includes ceiling bracket and wiring - Does not include AV receiver - run wiring to master jack in great room	
Garage	1.00	Vacuum Extension Vacuum Extension - Location as shown on floor plan - Extends and connects all vacuum rough-in outlets to one location - Seal vacuum pipe when extended to the garage as per building code	
Garage	1.00	Vacuum System w/ Accessories (VAC-KITCV600AW) Vacuum System w/ Accessories (VAC-KITCV600AW) - Location as shown on floor plan - Includes Ethos central vacuum canister (CANA-VAC ES-625) and accessories kit (LS Performance Pack)	
Kitchen	1.00	Vacuum Pan Black (VAC-DI500BK) Vacuum Pan Black (VAC-DI500BK) - Location as shown on floor plan	
Kitchen	1.00	(1) Port Plate - (1) Data CAT5e Outlet (1) Port Plate - (1) Data CAT5e Outlet - Location as shown on floor plan - in ceiling for future access point	
2nd Floor Ceiling	1.00	(1) Port Plate - (1) Data CAT5e Outlet (1) Port Plate - (1) Data CAT5e Outlet - Location as shown on floor plan - in ceiling for future access point	



Tel: (613) 748-0432  
Fax: (613) 748-0355

A Division of the S&S Bolton Group  
www.ssbolton.com

SITE INSTRUCTIONS

Ref: SS2257 Rev.02

Customer:

VALECRAFT HOMES (2019) LTD.  
Embrun - Place St Thomas  
Project: Singles Ph 3  
Lot: 0018  
Closing Date: 08/06/2020  
Salesperson: Jason Thompson  
Date: 10/30/2019

Location	Qty	Product / Installation Details	Plan Code
Great Room	1.00	Add 15 AMP recessed plug approx 72 inches from floor above fireplace beside conduit	A
Garage	1.00	Add 15 Amp separate circuit plug for central vacuum	B
Kitchen	1.00	Add 2 keyless fixtures on added switch for future pendant lighting	C
Kitchen	1.00	Delete standard fixture and add 4 LED Halo potlights (AFR4-0930-WH)	D
Kitchen	1.00	Add LED stick lighting on added switch	E
Great Room	1.00	Add 8 LED Halo potlights (AFR4-0930-WH) using control switch (sever control to plugs)	F
Ensuite Bath	1.00	Add speaker/pot light combo in ensuite shower. Includes wiring of the pot light, switch, the actual speaker/pot and 1 visit of tutorial once customer moves in. Pot light may be slightly off center due to truss layout in ceiling	H
Main Bath 2ft	1.00	Add shower rated potlight (SAN-AFR4-0930-WH) above shower/tub combo - on existing switch	I
2nd Floor Ceiling	2.00	Delete standard fixtures and add 2 LED Halo potlights (AFR4-0930-WH)	J

Phone: (613) 748-0432 | Fax: (613) 748-0355 | Email: info@sandselectric.ca | Website: www.sandselectric.ca

5411 Canotek Road, Ottawa, Ontario K1J 9M3

Printed By: Jason Thompson - Page: 1

# THE HARTIN

MODEL 815

2130 sq.ft

Site: PST P.3

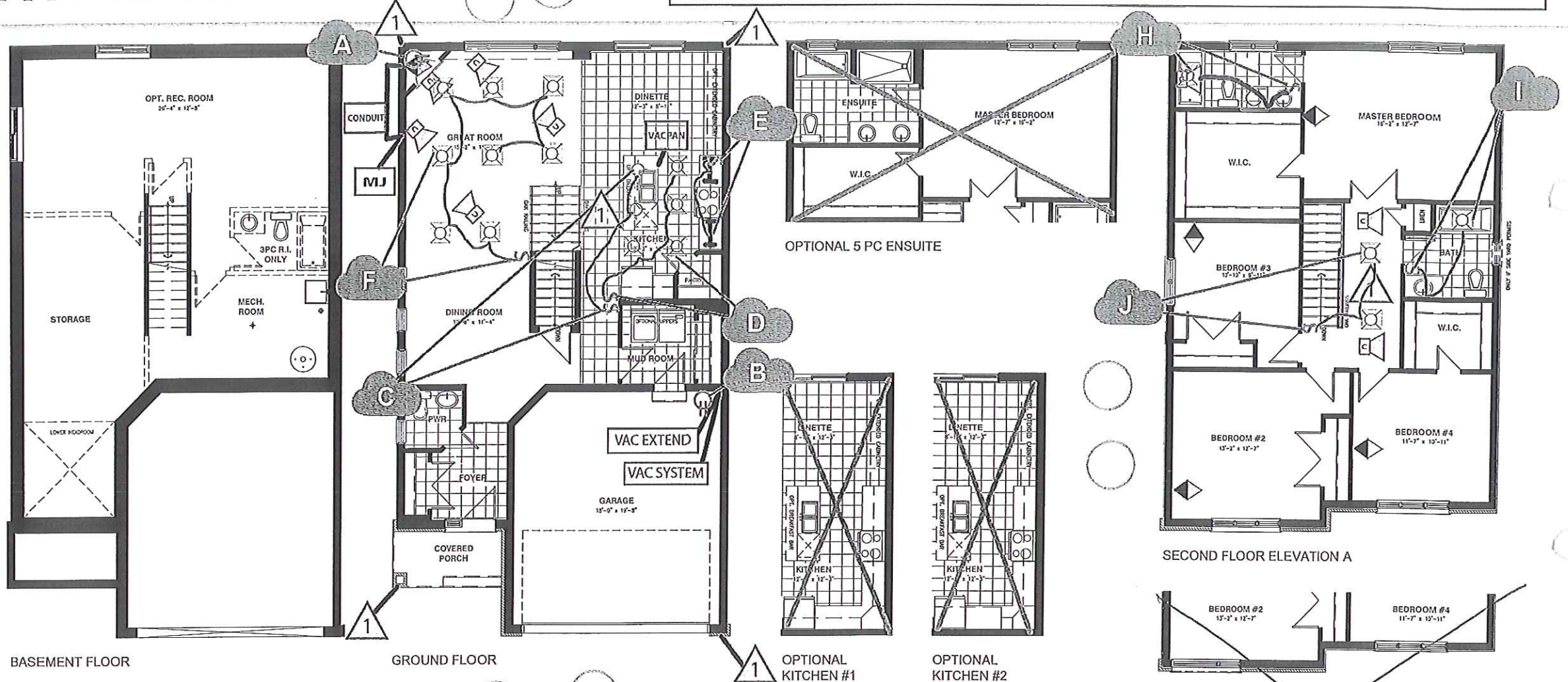
Purchaser: \_\_\_\_\_

Plan No.: \_\_\_\_\_

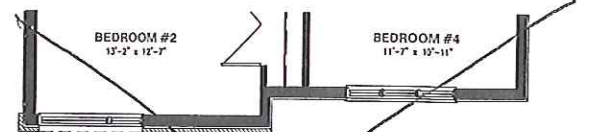
Lot: 18

Purchaser: \_\_\_\_\_

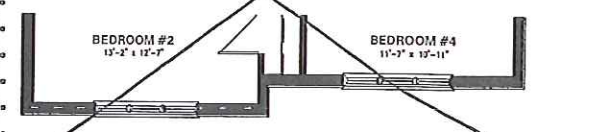
Date: October 16, 2019



SECOND FLOOR ELEVATION A



SECOND FLOOR ELEVATION B



SECOND FLOOR ELEVATION C

CUSTOMER ACCEPTANCE \_\_\_\_\_

DATE \_\_\_\_\_

All dimensions are approximate. Exterior illustrations are artist concepts only and may not be as shown. E & O.E. plans, materials and specifications are subject to change without notice. Actual useable floor space may vary from the stated floor area. \*Note: Number of steps varies due to site grading.

E. & O.E. 06/03/2019

HERE