



SITE FILE COPY

STRUCTURAL

CONSTRUCTION SUMMARY
Forestside Estates Inc.

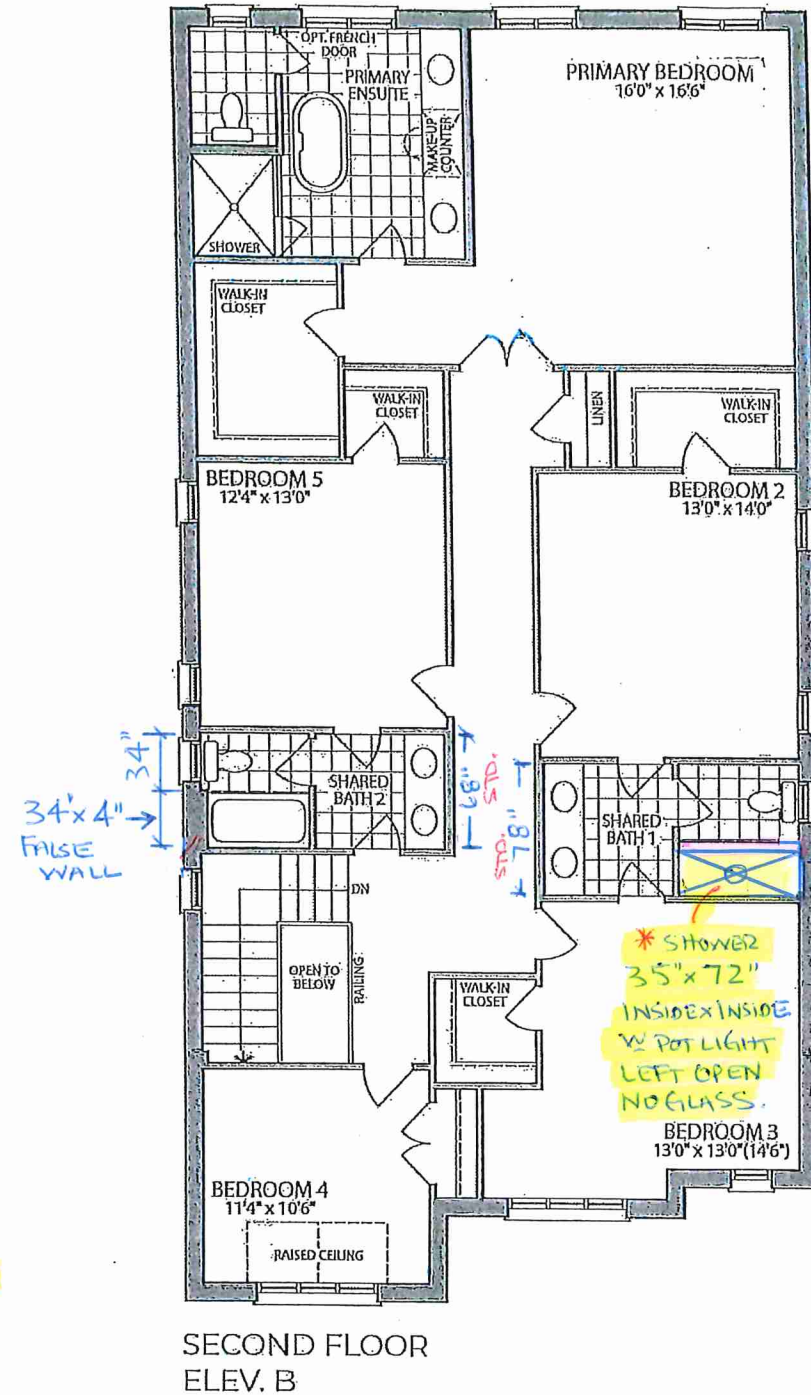
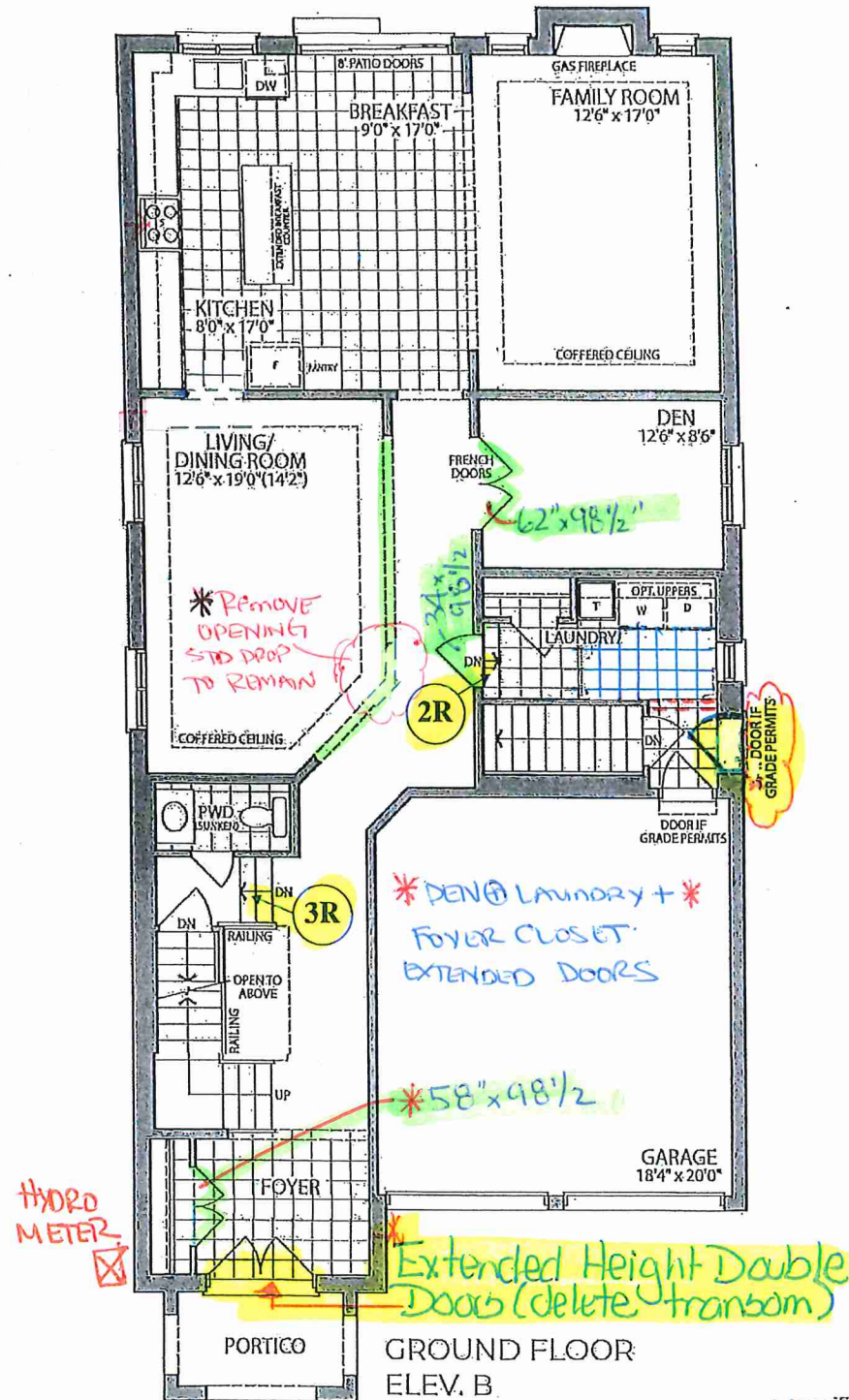
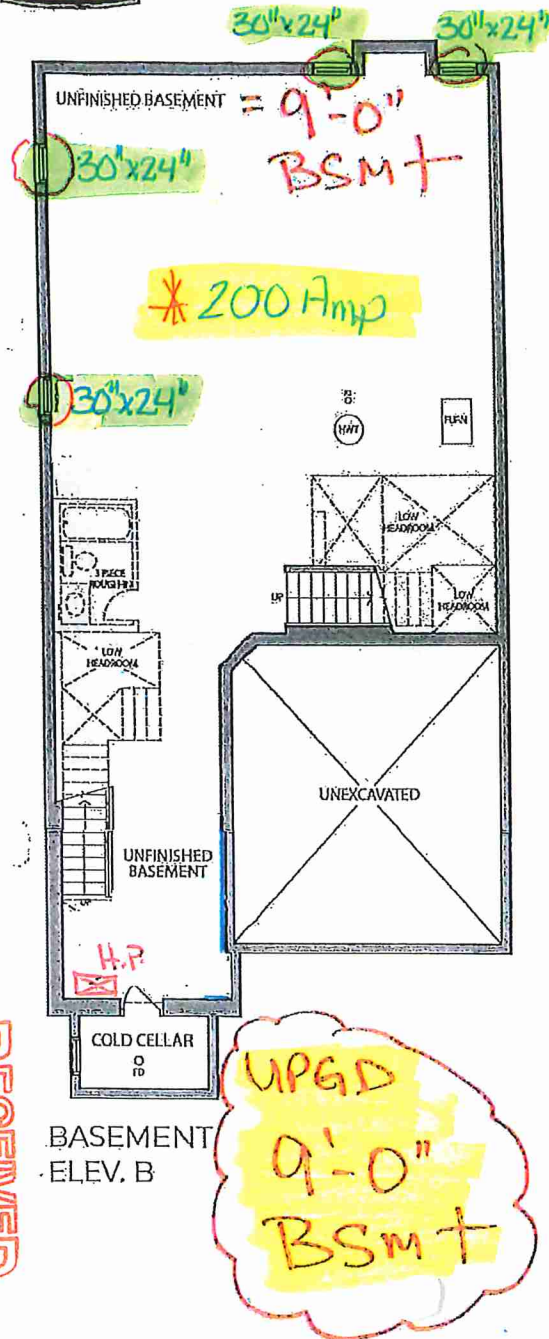
* INVENTORY *

* INVENTORY *

LOT NUMBER	PHASE	HOUSE TYPE	CLOSING DATE	
32	8	SILVER POPLAR (40-02B) - ELEV B	25-Jul-24	

Offer	
Worksheet	Note:

1 - SIDE EXTERIOR - Install OPTIONAL SIDE DOOR ENTRANCE (Includes Applicable Exterior Coach Light) **If Grade Permits** (See Sketch) Note:
4 - BASEMENT - Increase FOUR (x4) Basement Windows from Standard 30 IN (W) x 16 IN (H) TO LARGER 30 IN (W) x 24 IN (H) (with Possible Window Wells) (See Sketch) Note:
1 - FRONT EXTERIOR - FRONT DOOR - Install EXTENDED HEIGHT DOUBLE DOORS (Delete Transom Window Above) in lieu of builders standard height double doors (See Sketch) Note:
1 - BASEMENT - Install 200 AMP SERVICE in lieu of builders standard 100 Amp Service (See Sketch) Note:
* 1 - MAIN FLOOR Extended height doors -Den double French Door -Foyer Double Closet Doors -Hallway to Laundry Door
* 1 - LIVING ROOM Remove Return Arches to left open with continues standard drop
* 1 - SHARED BATH #1 Delete standard tub + add false cavity; install 35"x72" shower with pot-light; front to be left open for future glass.
1 - BASEMENT- Increase basement height to APPROXIMATELY 9'-0" as per vendors specifications and architentural drawings. Note:



3. specifications and floor plans are subject to change without notice. erings are artist's concept.
plans are approximate dimensions. Actual usable floor space may vary from the stated floor area. E.O.E.

LOT 32. 40-02. Silver Poplar. El. B. 5 Bedroom. 3495 SQ. FT.

INVENTORY LOT



THE SILVER POPLAR (40-02)



Extended Height
Double Doors



LOT 32

ELEVATION B

3495

SQUARE FEET

SCHEDULE "B"

INVENTORY LOT

LOT 32 . 40-02 . Silver Poplar . El. B . 5 Bedroom . 3495 SQ. FT.