

ELEVATION 'B'



FLANKAGE ELEVATION 'B'

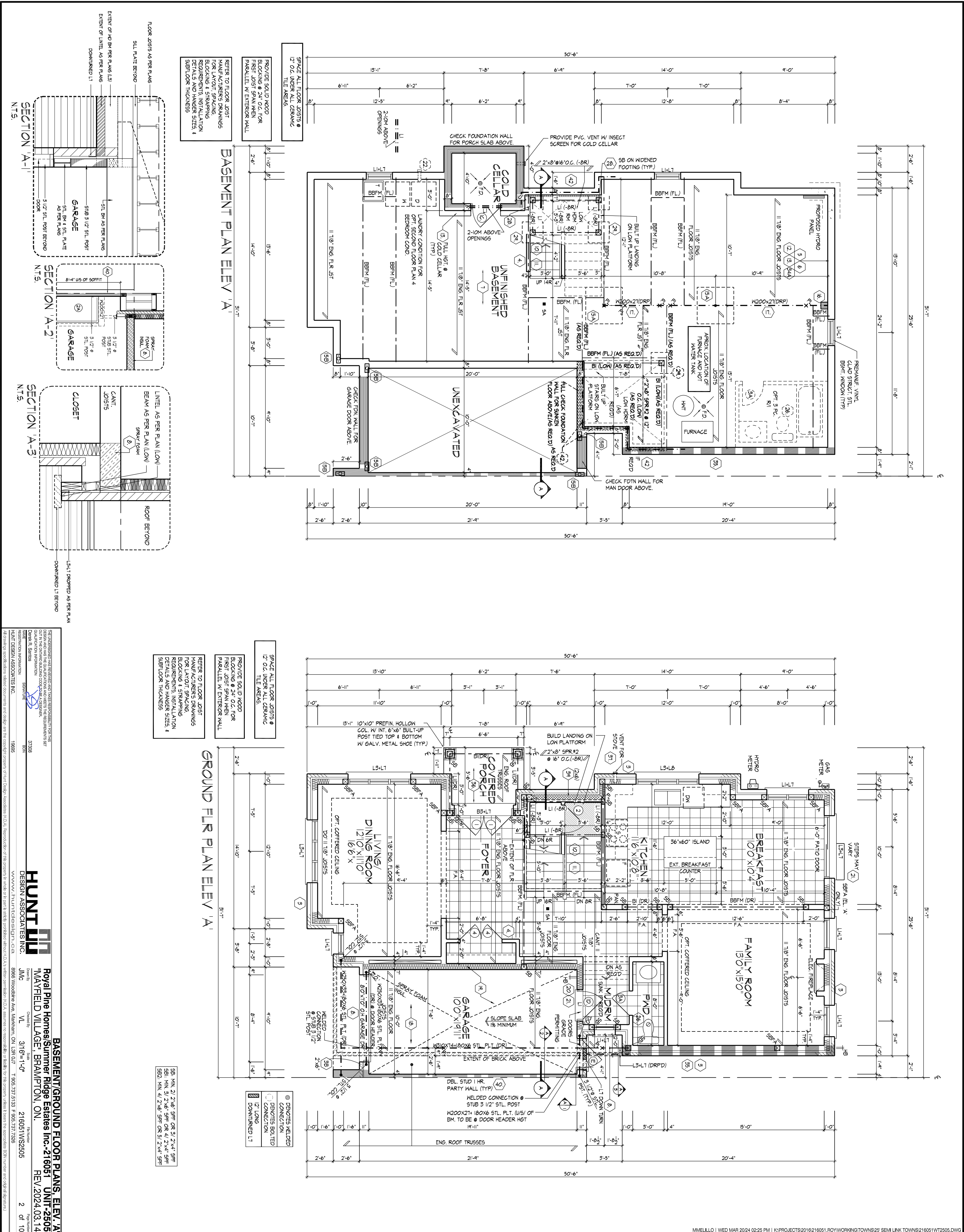
SB-12 ENERGY EFFICIENCY DESIGN MATRIX

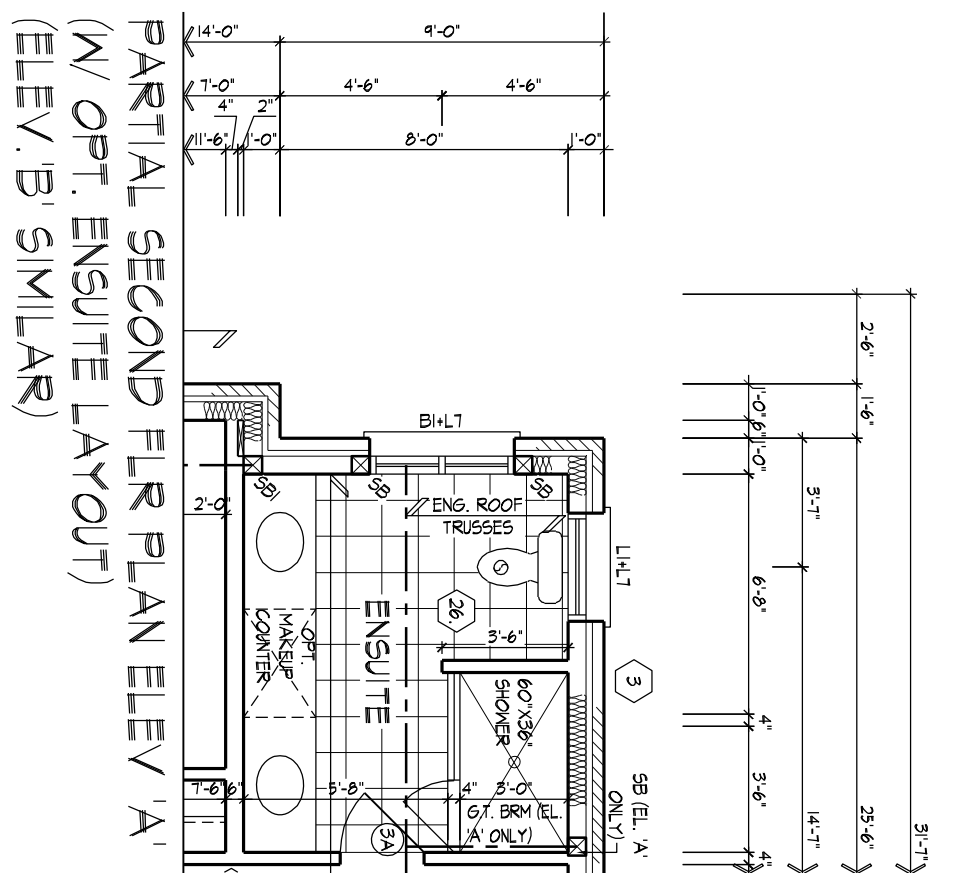
1. - TITLE PAGE
2. - BASEMENT/GROUND FLOOR PLANS, ELEV. 'A'
3. - SECOND FLOOR PLAN, ELEV. 'A' / PARTIAL OPT. SECOND FLOOR PLANS ELEV. 'A'
4. - PARTIAL BASEMENT/GROUND FLOOR PLANS, ELEV. 'B'
5. - PART. SECOND FLOOR PLAN, ELEV. 'B' / PART. OPT. SECOND FLOOR PLANS ELEV. 'B'
6. - FRONT, REAR & FLANKAGE ELEVATIONS 'A'
7. - RIGHT SIDE ELEVATION 'A' & 'B'

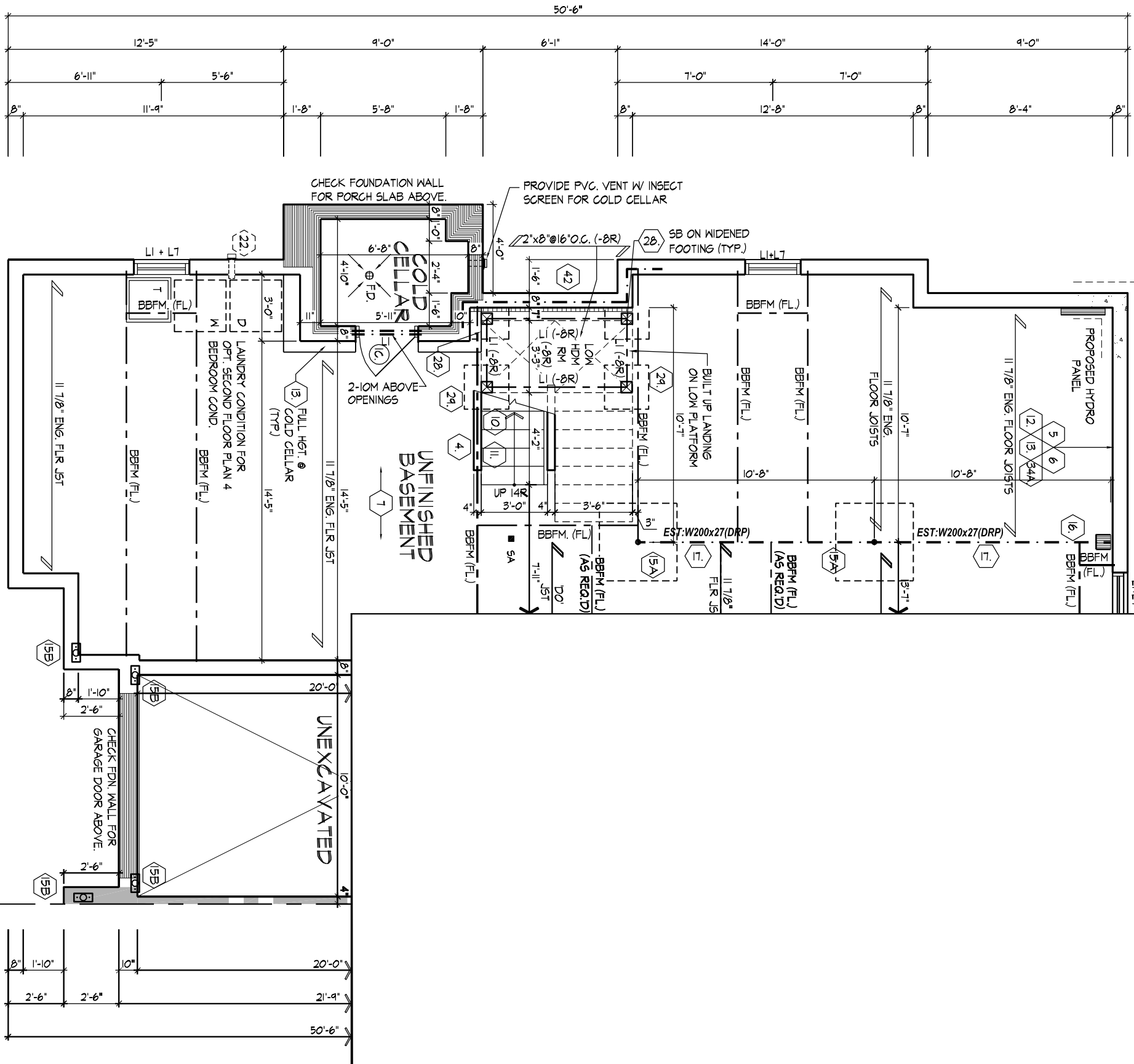
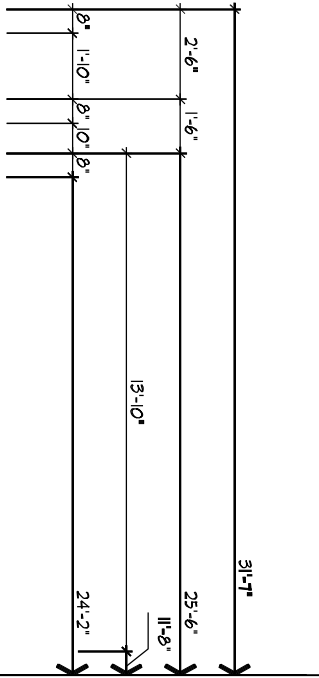
9 - CROSS SECTION 'A-A' & LOOK OUT DECK CONDITION
10 - CONSTRUCTION NOTES



051 UNIT-2505
REV.2024.03.14



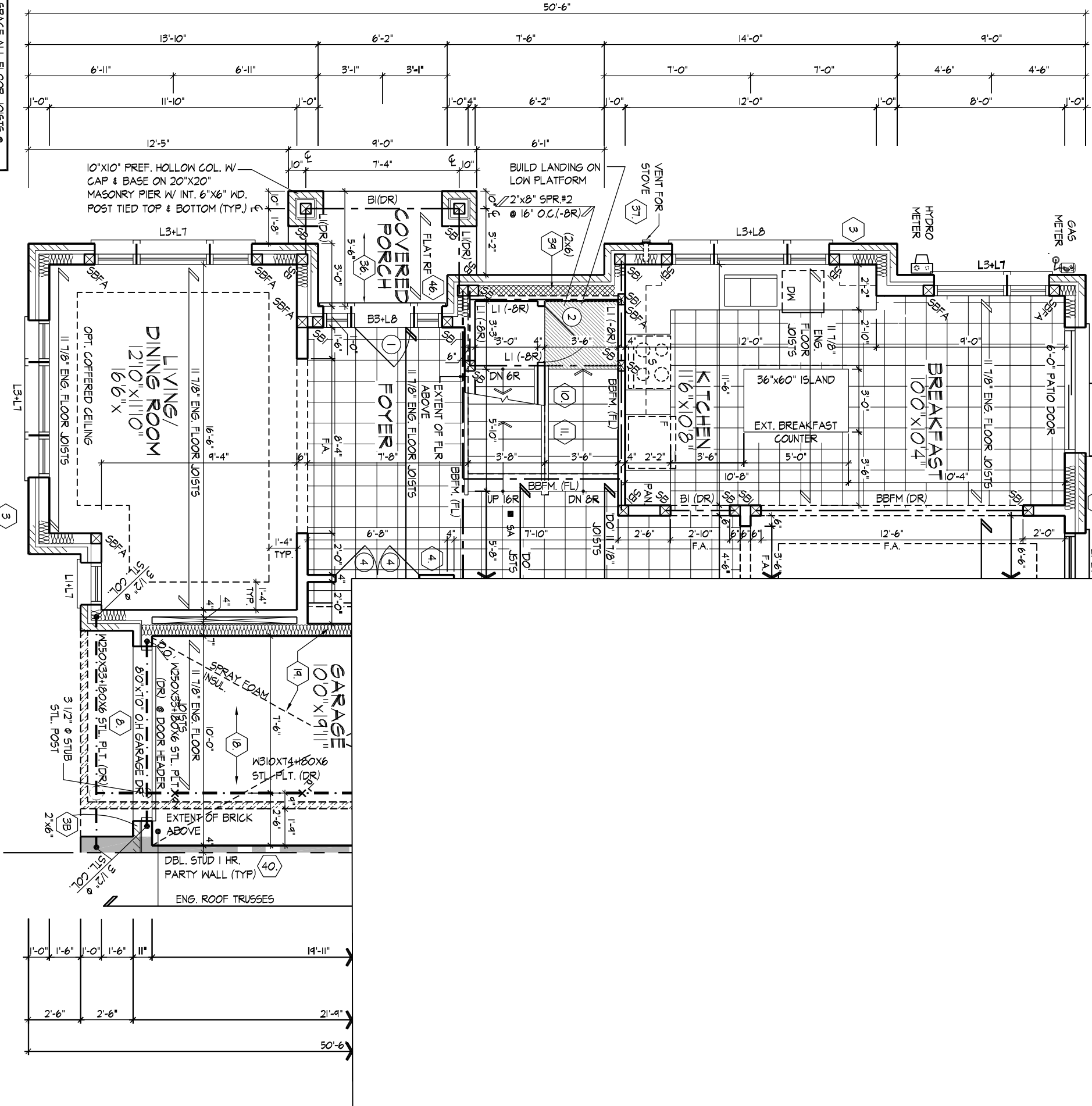
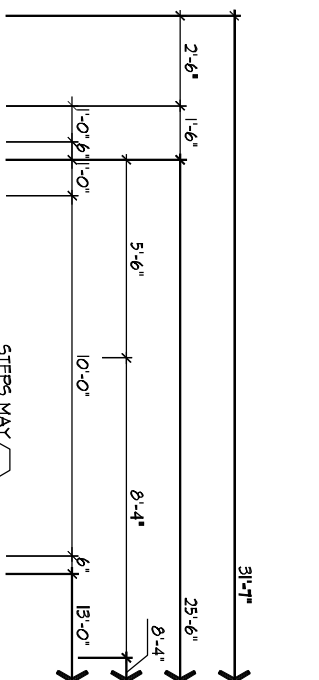




PARTIAL BASEMENT PLAN, ELEV B

REFER TO FLOOR JOIST MANUFACTURERS DRAWINGS FOR LAYOUT SPACING, BLOCKING & STRAPPING REQUIREMENTS, INSTALLATION DETAILS AND HANGER SIZES, & SLEEPER THICKNESS.

REFER TO STANDARD PLAN FOR COMPLETE CONSTRUCTION NOTES & DIMENSIONS.

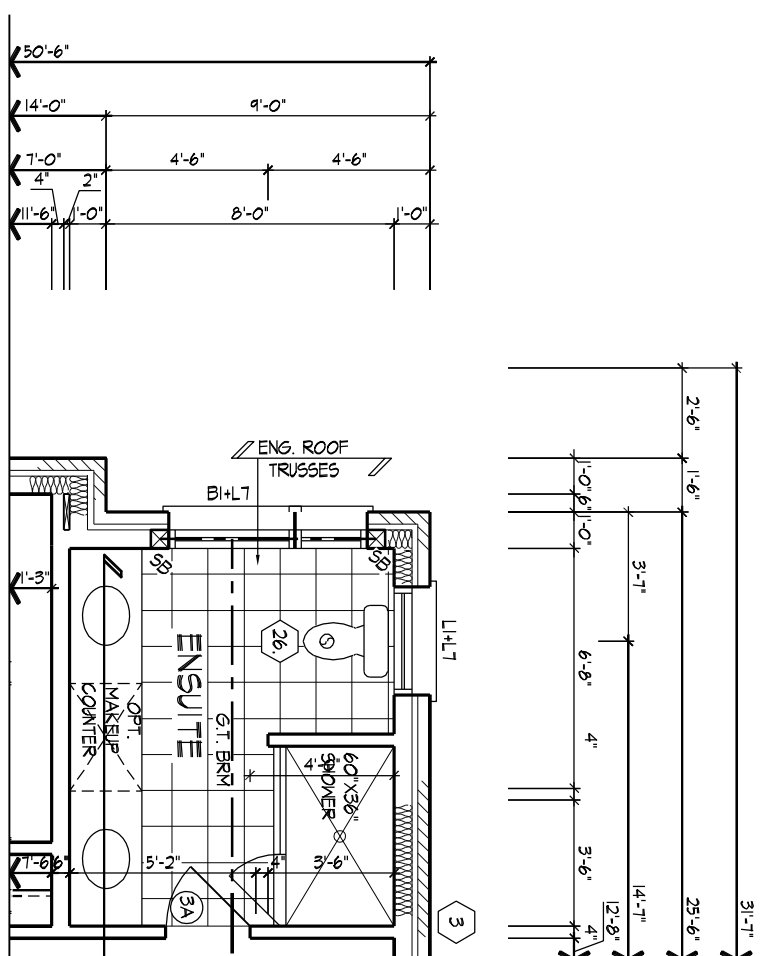


PARTIAL GROUND FLR PLAN, ELEV B

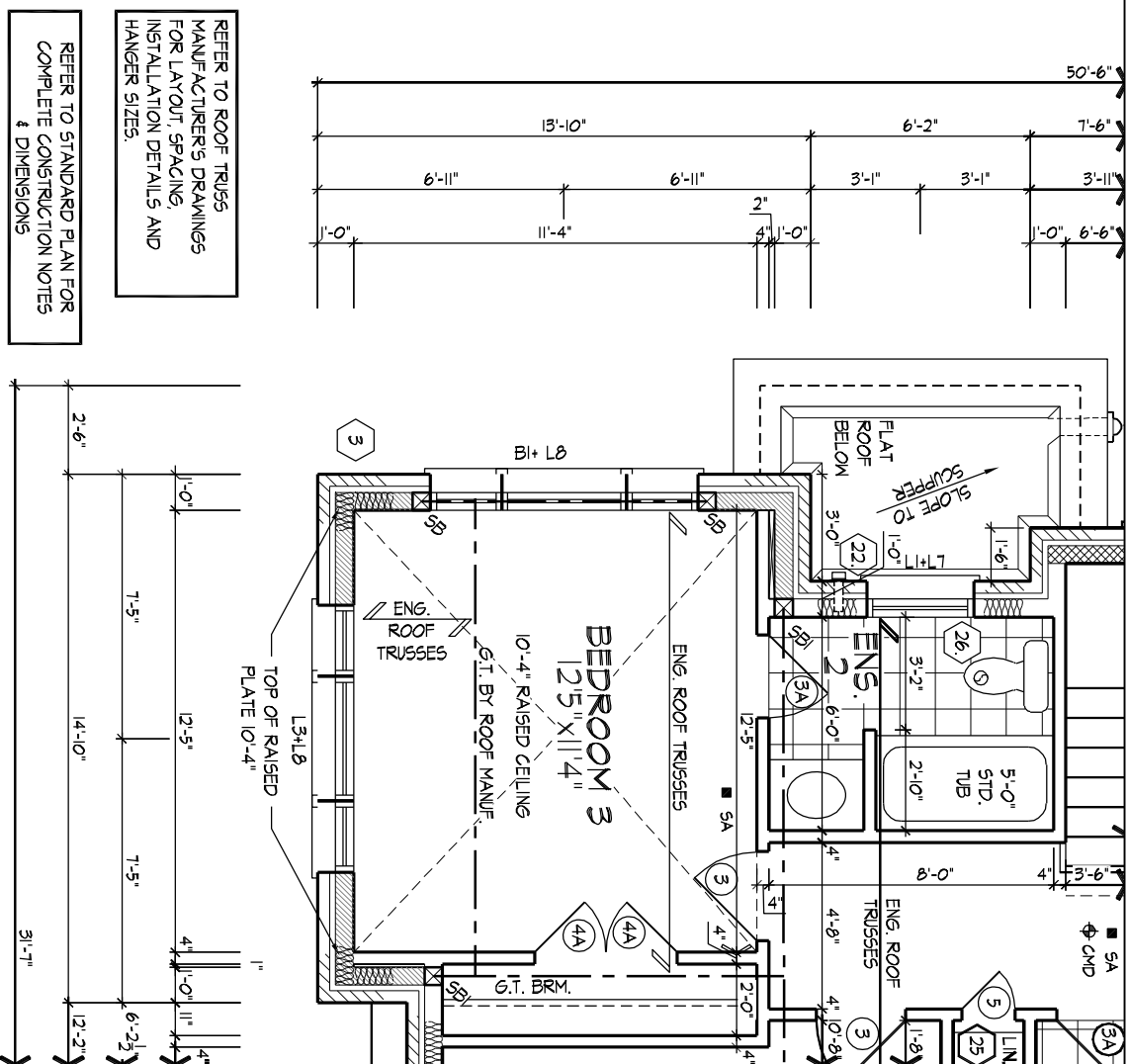
REFER TO FLOOR JOIST MANUFACTURERS DRAWINGS FOR LAYOUT SPACING, BLOCKING & STRAPPING REQUIREMENTS, INSTALLATION DETAILS AND HANGER SIZES, & SLEEPER THICKNESS.

REFER TO STANDARD PLAN FOR COMPLETE CONSTRUCTION NOTES & DIMENSIONS.

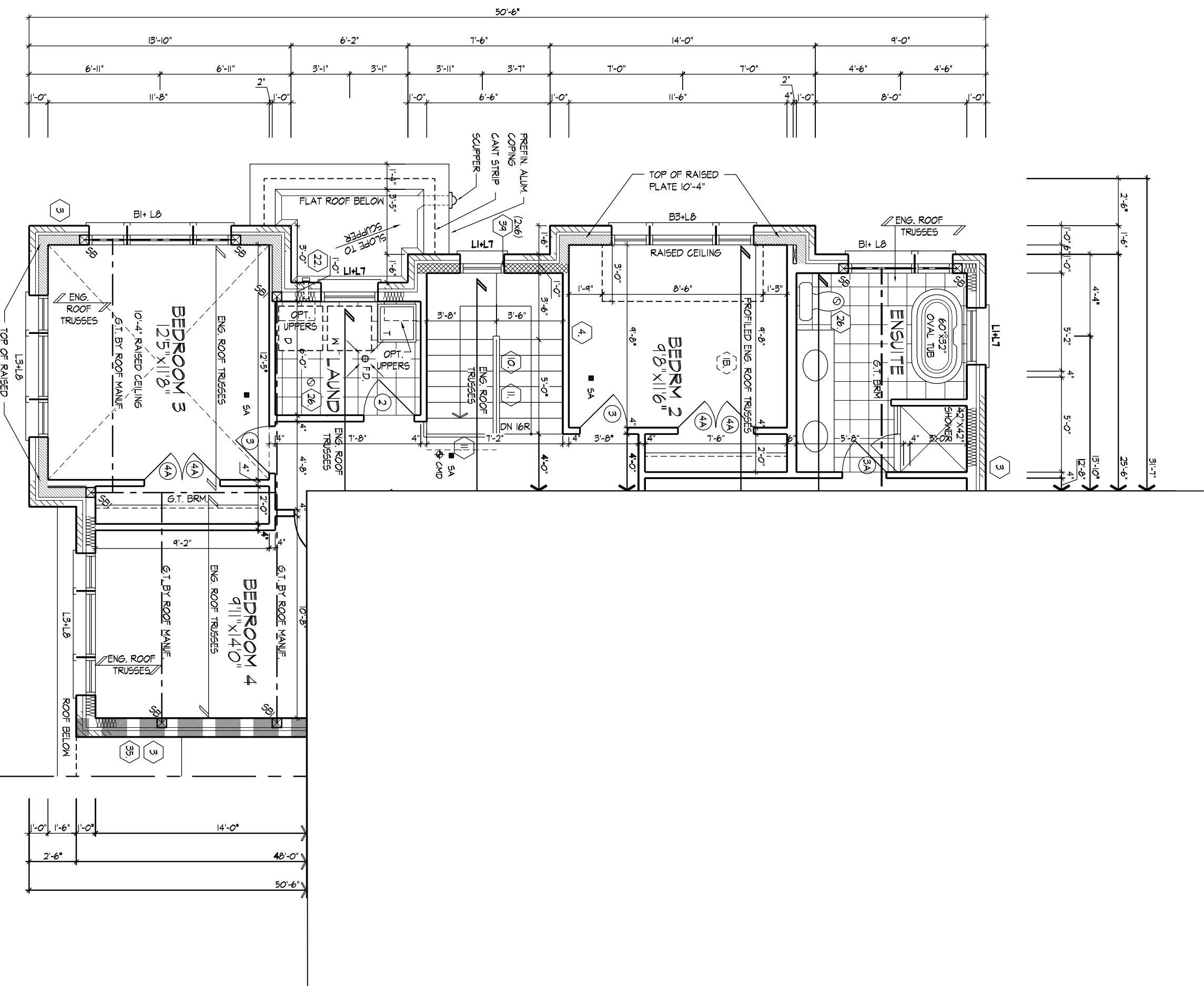
5B: MIN. 2/ 2"x6" SFF OR 3/ 2"x4" SFF
5B: MIN. 3/ 2"x6" SFF OR 4/ 2"x4" SFF
5B: MIN. 4/ 2"x6" SFF OR 5/ 2"x4" SFF



PARTIAL SECOND FLOOR PLAN ELEV 'B'
(W/ OPT. ENSUITE LAYOUT)

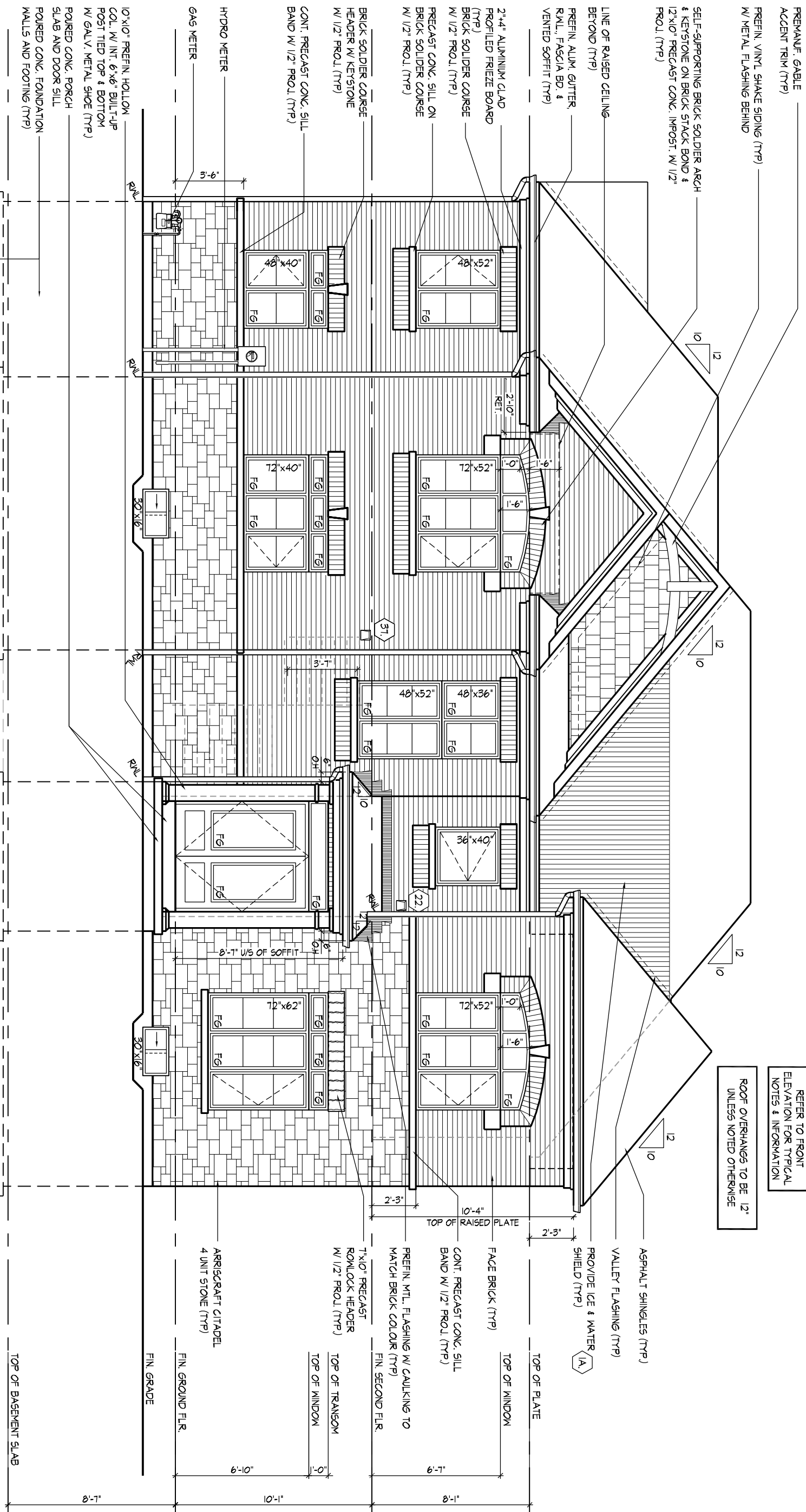
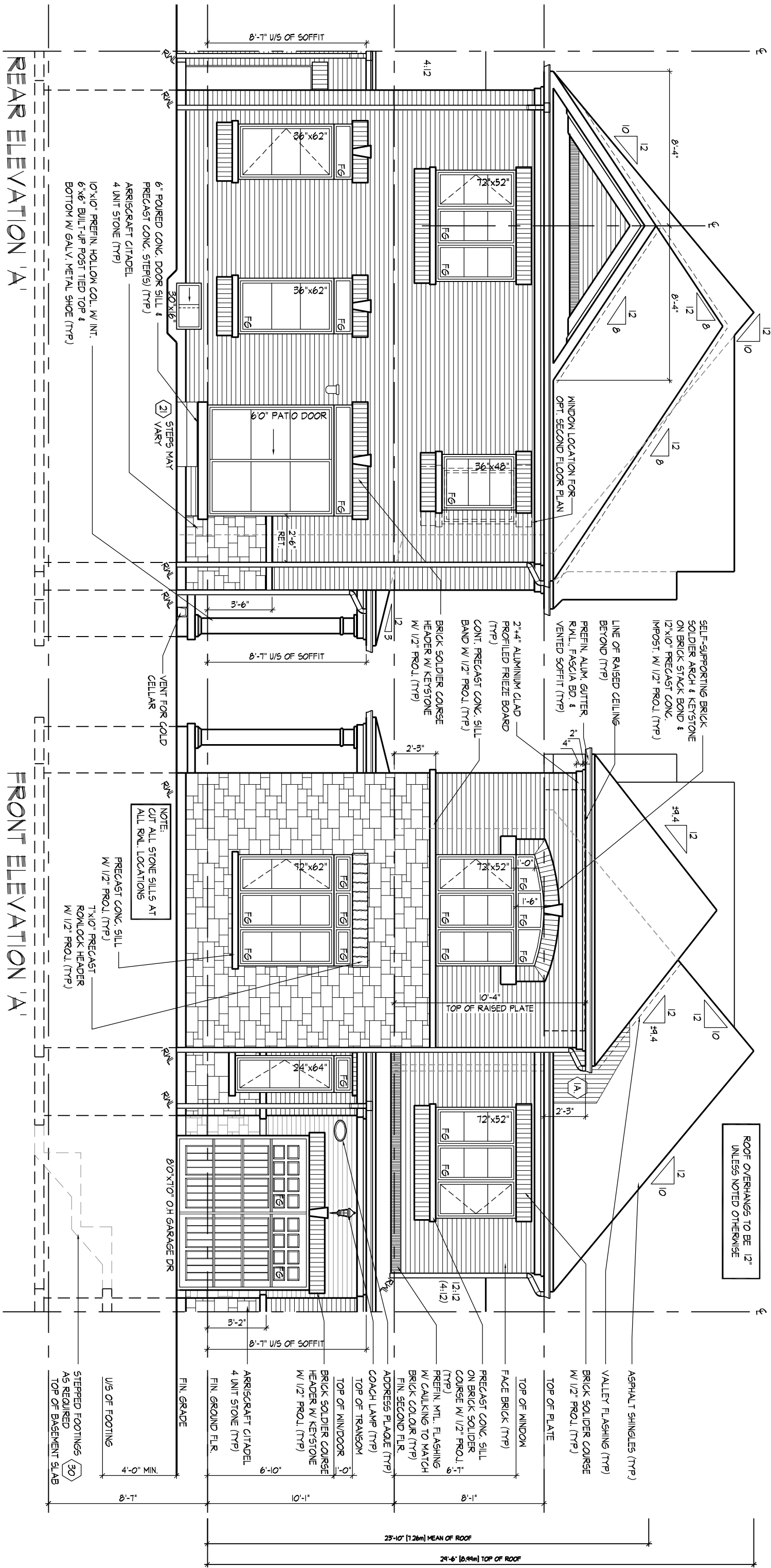


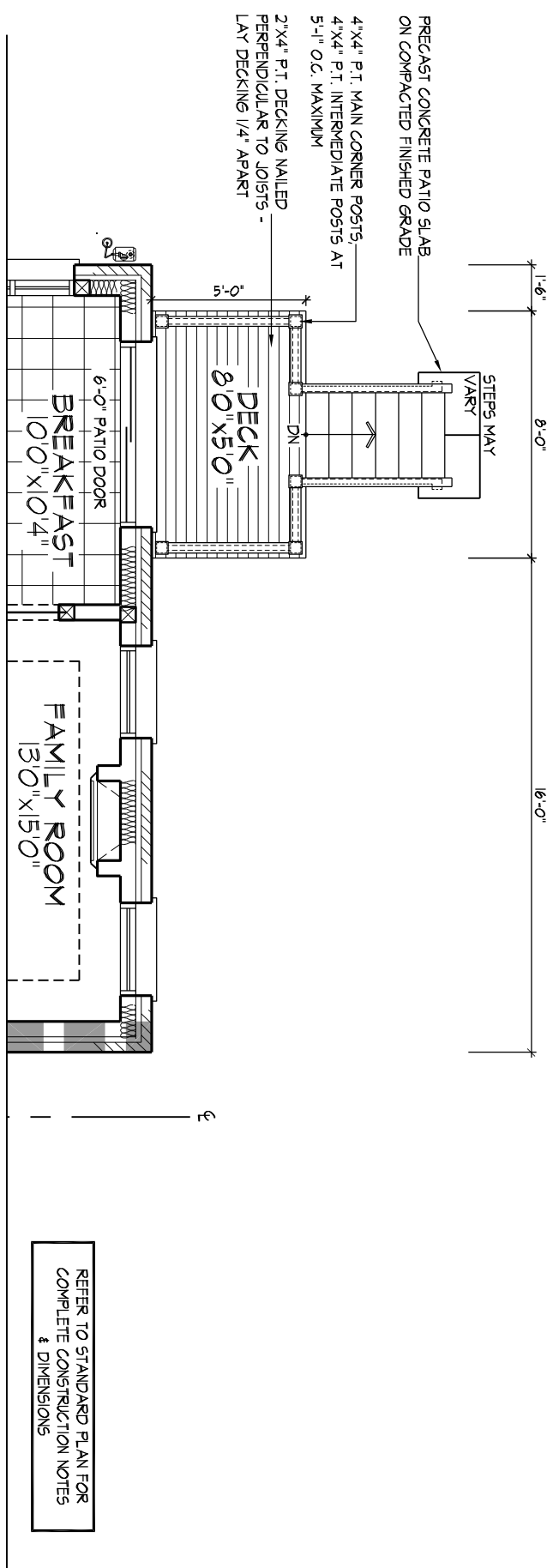
PARTIAL SECOND FLR PLAN,
ELEV 'B'
(W/ OPT. ENSUITE #2)



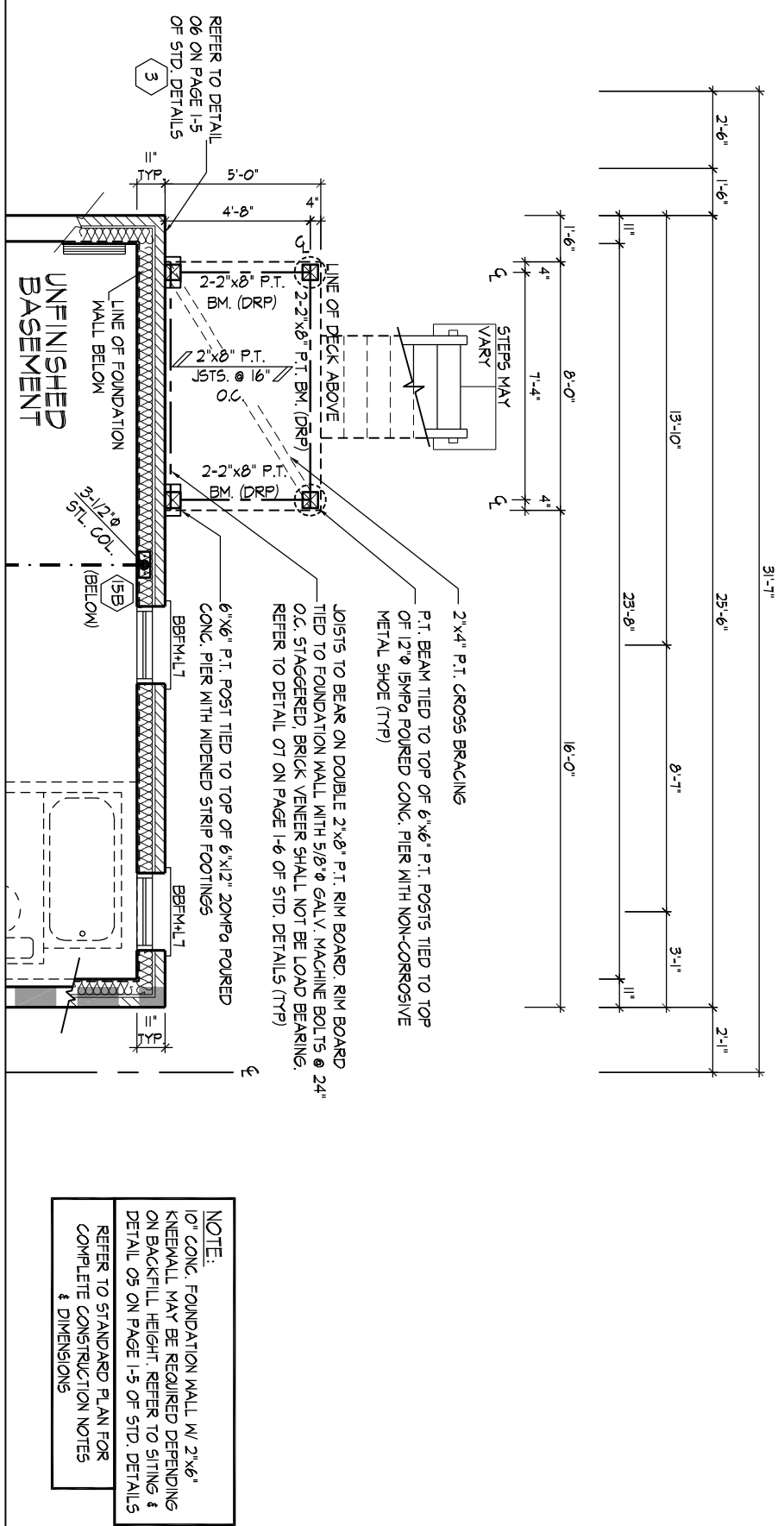
PARTIAL SECOND FLOOR PLAN ELEV 'B'

SB: MIN. 2/ 2"x6" SPF OR 3/ 2"x4" SPF
SB: MIN. 3/ 2"x6" SPF OR 4/ 2"x4" SPF
SB: MIN. 4/ 2"x6" SPF OR 5/ 2"x4" SPF

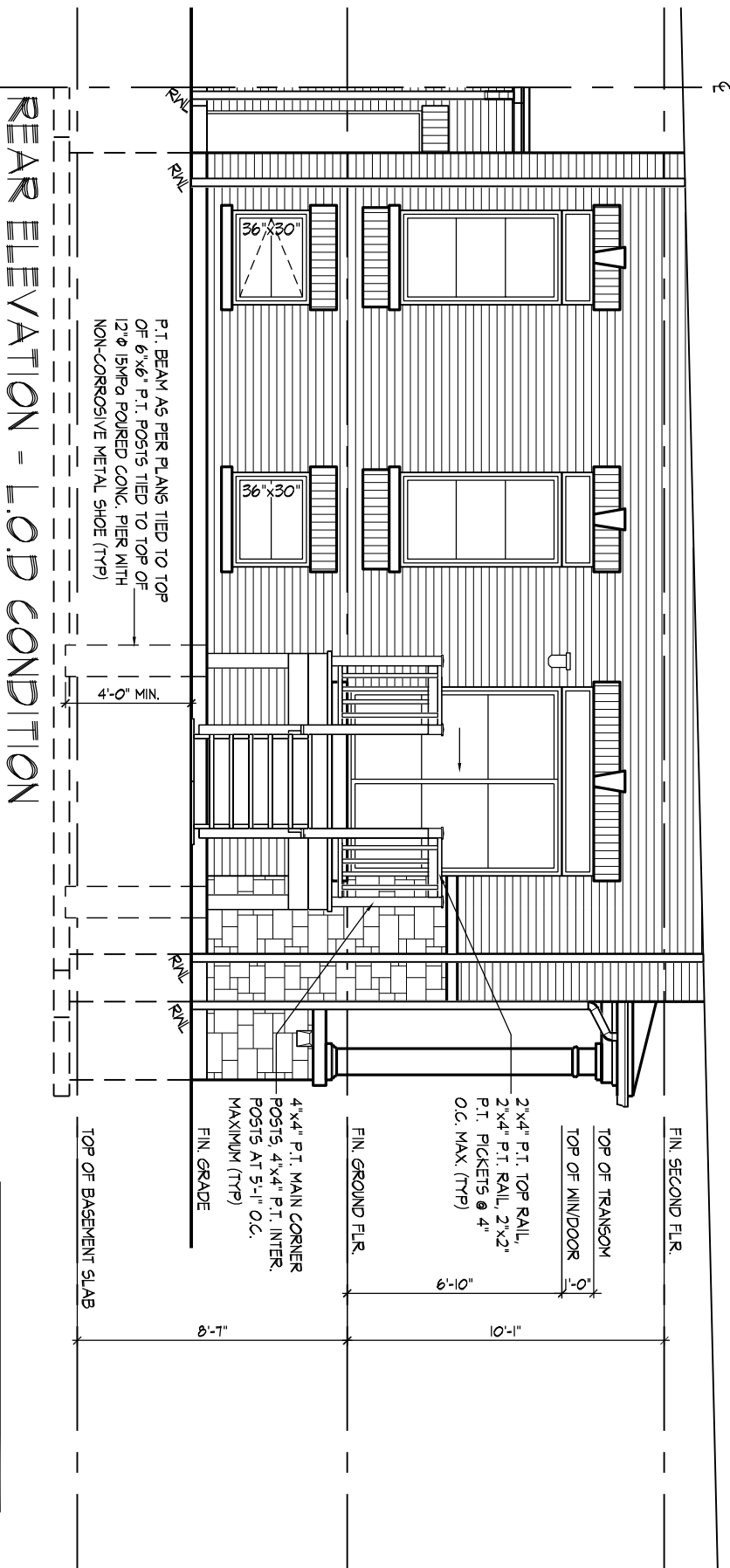




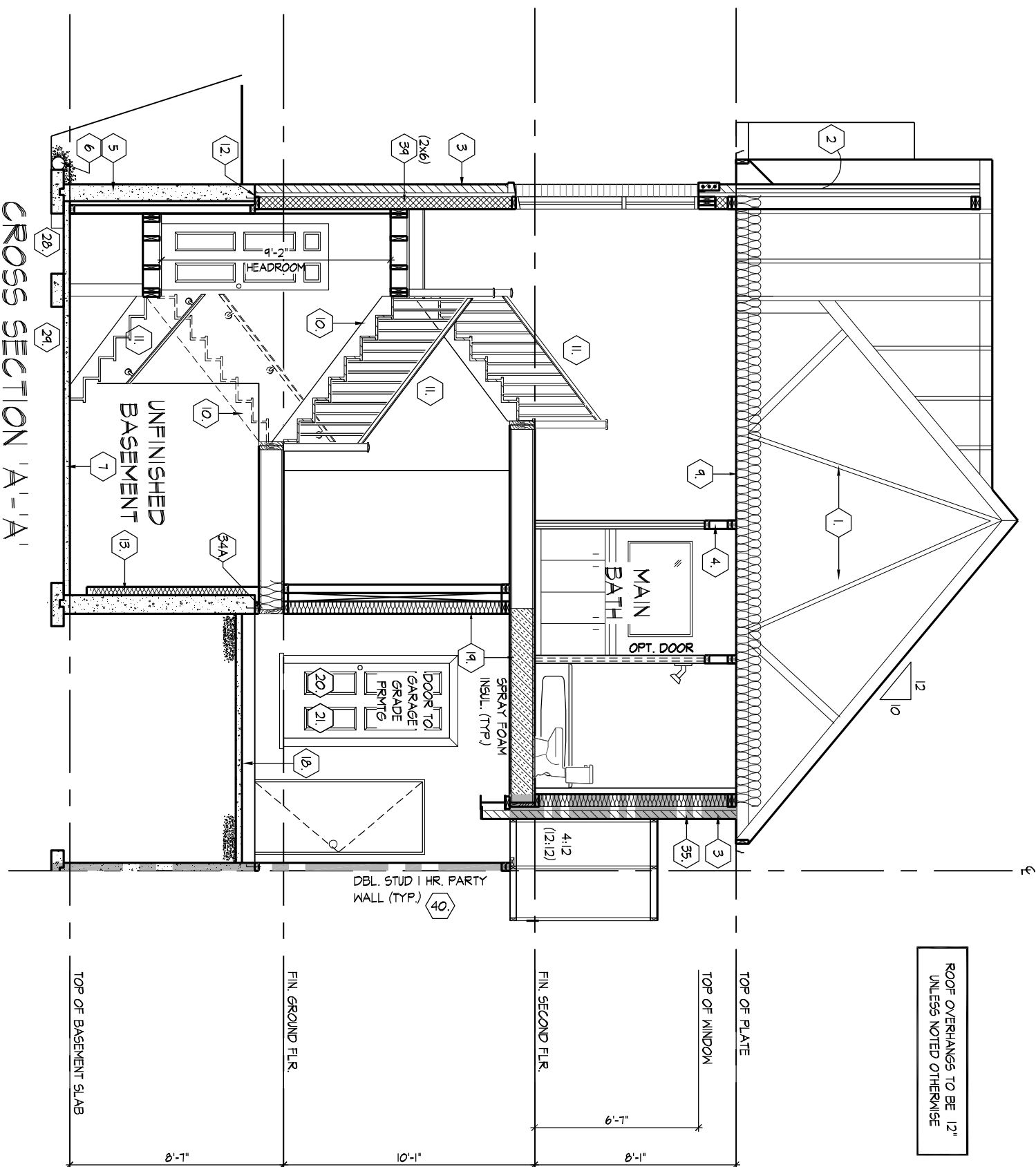
PART. GROUND FLOOR PLAN - L.O.D. CONDITION



PART. BASEMENT PLAN - L.O.D. CONDITION



REAR ELEVATION - L.O.D. CONDITION



CROSS SECTION 'A'-A'

ROOF OVERHANGS TO BE 12"
LINESS NOTED OTHERWISE

THE UNDERSIGNED HAS REVIEWED AND AGREES RESPONSIBLY FOR THIS

STATEMENT OF WORK AND AGREES TO THE REQUIREMENTS SET

OUT IN THE ATTACHED BILLING DOCUMENT AND THE

QUALIFICATION INFORMATION

OWNER: R. SANCHEZ

DESIGNER: J. SANCHEZ

37368

35047

UNIT-25055

REV: 2024.03.14

HUNT

DESIGN ASSOCIATES INC.

www.huntassociates.com

19859

37368

35047

ROYAL PINE HOMES/SUMMER RIDGE ESTATES INC.-216051

WMAFIELD VILLAGE, BRAMPTON, ON

UNIT-25055

REV: 2024.03.14

Drawn By

Checked By

J/M/C

J/M/C

3/16/8 - 1-0*

216051W/SM2505

9/6/26 WOODBINE AVE. MONTICELLO, ON L8M 0T7

T 905.737.5133 F 905.737.7326

Page Number

9

of 10

69566 WOODBINE AVE. MONTICELLO, ON L8M 0T7

T 905.737.5133 F 905.737.7326

UNIT-25055

REV: 2024.03.14

