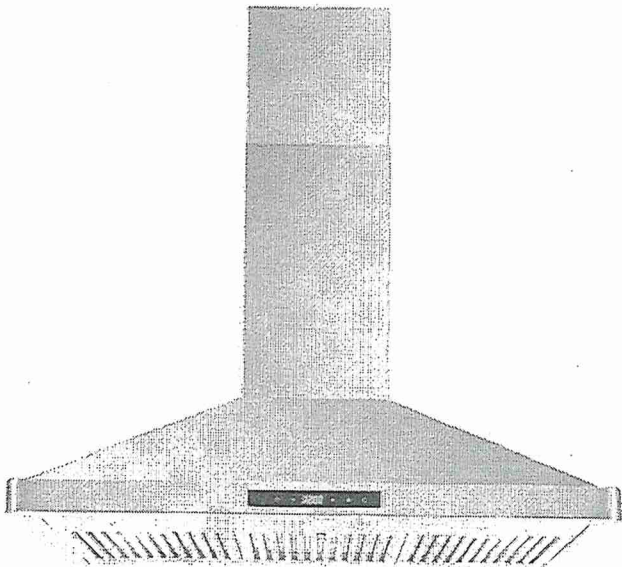


LOT 4 | WRV



SPECIFICATIONS

COS-63190S Range Hood



Size	36 Inch
Mounting Type	Wall Mount
Controls	Soft Touch with LCD Display
Filters	3 x Stainless Steel Baffle Filters
Material	Stainless Steel
Air Flow	380 CFM
Noise Level	65dB (Max)
Vent Style	External
Lighting	2 x Front LED
Voltage	120V / 60Hz
Wattage	180W
Included Components	Bulb(s), Damper, Exhaust Vent, Fan Hardware, Installation Kit, Power Cord

COS-63190S

The perfect piece for any contemporary kitchen, Cosmo's COS-63190S Range Hood is powered by 380 CFM of suction, front LED lights and ARC-FLOW® Permanent Filters.



3 Fan Speeds



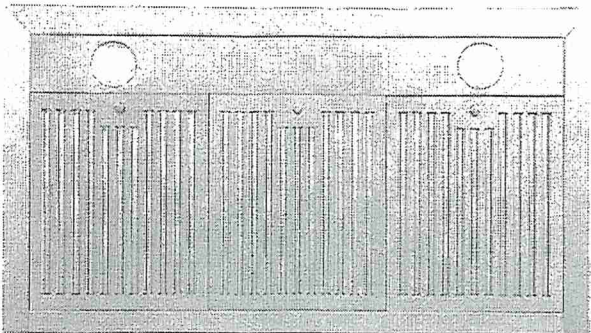
Soft Touch Controls



LED Lighting

Features

- Designed for wall mounting
- 3 fan speeds
- 380 CFM airflow capacity
- Soft touch controls with LCD display
- ARC-FLOW® Permanent Filters
- 2 front LED lights
- 65 dB for quiet operation
- 20-Gauge, 430 Grade Stainless Steel

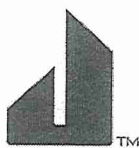


See Page 2 for dimensions

For more information, please visit: www.cosmoappliances.com

6 ø" DUCT

LOT 41 WRV



30" PANEL-READY BUILT-IN COLUMN REFRIGERATOR, RIGHT SWING

Signature Features

JBRFR30IGX

OVER 250 CONFIGURATIONS Freezer or refrigerator. Left-hand or right-hand swing. One, two, three columns in a row. Four different widths. With 12 one-unit options, 75 two-unit combinations and over 250 three-unit combinations, configuration is where bespoke begins.	TRINITY COOLING Revel in the trinity of food preservation: three zones, three precision sensors, calibrated every second. Fortified by an exposed air tower, you can conquer humidity levels and customize the temperature of each zone to your deepest desires.	REMOTE ACCESS Open door. Power outages. Filter changes. Connect to WiFi for real-time notifications and control your columns from anywhere. Tap and swipe on both iOS and Android devices.
ECLIPTIC LIGHTING Live beyond the shadow. Abandoning the dark spots cast by dated puck lighting, over 650 LEDs frame and fill your column, coming alive at a touch of the controls. Each zone awakens and pulses as you mold your column to your desires.	DARING OBSIDIAN INTERIOR Inspired by the beauty of volcanic glass, this industry-exclusive dark finish erupts with reflective, high-contrast style. Reject the unfeeling, lifeless vessel of harsh steel. Let fine foods and beverages emerge from the interior of your columns like vibrant art, begging to be devoured.	SOLID GLASS AND METAL All-metal bin and shelf frames. Thick, naturally odor-resistant solid glass. A forcefield at the edge that prevents spillovers. To hell with cheap plastic in luxury door bins, shelves and liners.
EMOTIVE CONTROLS At waist-level, this panel invites touch, challenging the idea that controls should be out of sight and out of reach. Control every zone and choose presets to coax out the flavors of your produce, meat, beverages, spirits and beyond—and dominate your domain according to your desires.	HUSHED ACOUSTICS Unheard of. We're decibel for decibel one of the quietest leading luxury built-in columns out there. Casting off abrupt start and stop cycles, our columns ditch swings in temperature and humidity, running unobtrusively in the background. Brilliance doesn't have to announce itself, it just is.	SHAPESHIFTER DRAWERS (REFRIGERATOR) From craft beer to the farmer's market. Whether you're marinating a steak or storing a charcuterie tray, every drawer has presets to meet your desires.



Technical Specifications

Configuration and Overview	Refrigerator Details	Dimensions
Advance Foam Insulation: 99.9% lower Global Warming Potential and Better Energy Performance	Lighting: Strip and Tower LED Lighting	Refrigerator Volume: 4811.00 l
Counter Depth: Yes	Dispenser Details	Capacity: 17.00
Number of Doors: 1	Dispenser Type: Interior Water Only	Total Volume: 4811.00 l
Installation Option: Built-In	Dispenser Options: Filtered Water	Depth: 6889.75 cm
Appearance	Certifications	Height: 21209.00 cm
Hidden Hinge: Yes	Prop 65: Standard	Net Weight: 227703184.00 kg
Handle Material: Metal	Energy Star® Qualified: ENERGY STAR® Qualified	Width: 7556.50 cm
Door Style: Flat	Details	Controls
Reversible Door: No	Cooling Type: Single Evaporator	Control Lockout: Yes
Cabinet Finish: Smooth	Compatibility	Door Ajar/Open Alarm: Yes
Filter Details	Connectivity: iOS	Automatic Defrost: Yes
Water Filter Indicator/Reset: Yes	Works With:	Control Location: Interior Up Front
Produce Preserver: Yes	<ul style="list-style-type: none">WiFiAppRemote Access	Design Type
Refrigerator Details	Description	Design Expression: Panel-Ready
Number of Interior Shelves: 3	Refrigerator Type: Column Refrigerator	
Pantry Drawer: No	Dispenser	
Deli Drawer: 1 Flexi-Slide Bin	Dispenser Pad Color: Black	
Supplementary Containers: Herb Tender™ Container		

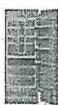
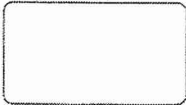
JBRFR30IGX

Col. Fridge.

LOT4



(/img/xxlarge/jenn-air/no-freezer-built-in-refrigerator/JBRFR30IGX_1.jpg)




(/img/xxlarge/jenn-air/no-freezer-built-in-refrigerator/JBRFR30IGX_2.jpg)(/img/xxlarge/jenn-air/no-freezer-built-in-refrigerator/JBRFR30IGX_3.jpg)(/img/xxlarge/jenn-air/no-freezer-built-in-refrigerator/JBRFR30IGX_4.jpg)

>> View 2020 JennAir Parts & Accessories Guide <<

Change to Jenn-Air JBRFL30IGX (https://www.canadianappliance.ca/product/Jenn-Air_JBRFL30IGX_Column_Refrigerators_Jenn-Air_JBRFL30IGX.html)

Promo



 Price History

Pay only \$10,199.99 CAD if you buy 2 or 3 eligible Jenn-Air items

\$10,199.99

Pay only \$9,599.99 CAD if you buy 4 or more eligible Jenn-Air items

\$9,599.99

Description & Features

Specs

Manuals

Video

Reviews

Rebates

Warranty

Financing

Install

FAQ

AIR MILES®

Earn 299 AIR MILES®


on this purchase. Redeem your AIR MILES® at <https://www.canadianappliance.ca/air-miles/>

LOT 41

Specifications

Dimensions			
29.75"	89"		27.25"
Width	Height		Depth
Capacity:	17 Cu. Ft.		
Finish:	Custom Panel Ready		
MPN:	18AFR301GX		
Product Details:	CUTOUT WIDTH	CUTOUT DEPTH	NET WEIGHT
	30	25	591.7
	CEE TIER	CONTROL LOCATION	HEIGHT
	Not Rated	Interior Up Front	79.88
	CONTROL TYPE	SABBATH MODE	CABINET FINISH
	Electronic Touch	Yes	Smooth
	REVERSIBLE DOOR	CUTOUT HEIGHT	HANDLE MATERIAL
	No	84	Metal
	TEMPERATURE RANGE	CARTON DEPTH	CARTON HEIGHT
	35F to 45F	32	87
	CARTON WIDTH	DEPTH-CLOSED EXCLUDING HANDLES	DEPTH CLOSED INCLUDING HANDLES
	33	24 1/2	27 1/2
	DEPTH WITH DOOR OPEN 90 DEGREE	GROSS WEIGHT	CAPACITY (CUBIC FEET)
	20522	842	17
	PROP 65	UL	HANDLE TYPE
	Standard	Yes	Reach-Through Handle
	HZ	AMPS	STYLE
	60	15	Freezers
	DESIGN EXPRESSION	WORKS WITH	DOOR OPENING
	Panel-Ready	WiFi App,Remote Access	Right
	CABINET COLOR	CABINET WIDTH	DEPTH EXCLUDING DOORS
	Black	30	23 11/16
	HEIGHT TO TOP OF CABINET	TYPE OF REFRIGERATOR	INSTALLATION OPTION
	84	Column Refrigerator	Built-In
	COOLING TYPE	ADVANCE FOAM INSULATION	COUNTER DEPTH
	Single Evaporator	99.9% lower Global Warming Potential and Better Energy Performance	Yes
			DOOR STYLE
			Flat
	BASE GRILLE COLOR	NUMBER OF DOORS	DOOR COLOR
	Black	1	Panel Ready
	DOOR FINISH	HIDDEN HINGE	AUTOMATIC DEFROST
	Textured	Yes	Yes
	CONTROL LOCKOUT	DOOR AJAR/OPEN ALARM	MAX COOL/FAST COOL
	Yes	Yes	Yes
	WATER FILTER INDICATOR/RESET	LIGHTING	NUMBER OF INTERIOR SHELVES
	Yes	Strip and Tower LED Lighting	3
	CONVENTIONAL SHELVES	DOOR BINS	TEMPERATURE-CONTROLLED DRAWERS
	3 Adjustable Full-Width Glass	4 Adjustable Gallon	3 Full Width
	LINER FINISH	SHELF SUPPORTS	SUPPLEMENTARY CONTAINERS
	Obsidian Metallic/Black	Cantilever	Herb Tender(TM) Container
	DISPENSER OPTIONS	DISPENSER PAD COLOR	PRODUCE PRESERVER
	Filtered Water	Black	Yes
	WATER FILTER PART NUMBER	DISPENSER TYPE	ENERGY STAR(R) QUALIFIED
	EDR2RXD1	Interior Water Only	ENERGY STAR(R) Qualified
	PANTRY DRAWER	DELI DRAWER	STAR K CERTIFIED
	No	1 Flexi-Slide Bin	Yes
	LEVELERS	WHEELS	
	2 Black	4-Natural	
UPC:	883049438313		
Refrigerator Capacity:	17		

LOT 4

 JBZFL30IGX (https://www.canadianappliance.ca/product/Jenn-Air_JBZFL30IGX_Built_In_Freezer_Jenn-Air_JBZFL30IGX.html) Jenn-Air JBZFL30IGX Built In Freezer, 30" Width, ENERGY STAR Certified, 17.0 cu. ft. Capacity, Frost Free, Interior Light (Freezer), Ice Maker, Panel Ready Left Swing (https://www.canadianappliance.ca/product/Jenn-Air_JBZFL30IGX_Built_In_Freezer_Jenn-Air_JBZFL30IGX.html)

- Description & Features (https://www.canadianappliance.ca/product/Jenn-Air_JBRFR30IGX_Column_Refrigerators_Jenn-Air_JBRFR30IGX.html#tab-features)
- Specs (https://www.canadianappliance.ca/product/Jenn-Air_JBRFR30IGX_Column_Refrigerators_Jenn-Air_JBRFR30IGX.html#tab-specs)
- Manuals (https://www.canadianappliance.ca/product/Jenn-Air_JBRFR30IGX_Column_Refrigerators_Jenn-Air_JBRFR30IGX.html#tab-manuals)
- Video (https://www.canadianappliance.ca/product/Jenn-Air_JBRFR30IGX_Column_Refrigerators_Jenn-Air_JBRFR30IGX.html#tab-video)
- Reviews (https://www.canadianappliance.ca/product/Jenn-Air_JBRFR30IGX_Column_Refrigerators_Jenn-Air_JBRFR30IGX.html#tab-reviews)
- Rebates (https://www.canadianappliance.ca/product/Jenn-Air_JBRFR30IGX_Column_Refrigerators_Jenn-Air_JBRFR30IGX.html#tab-rebates)
- Warranty (https://www.canadianappliance.ca/product/Jenn-Air_JBRFR30IGX_Column_Refrigerators_Jenn-Air_JBRFR30IGX.html#tab-warranty)
- Financing (https://www.canadianappliance.ca/product/Jenn-Air_JBRFR30IGX_Column_Refrigerators_Jenn-Air_JBRFR30IGX.html#tab-financing)
- Install (https://www.canadianappliance.ca/product/Jenn-Air_JBRFR30IGX_Column_Refrigerators_Jenn-Air_JBRFR30IGX.html#tab-installation)
- FAQ (https://www.canadianappliance.ca/product/Jenn-Air_JBRFR30IGX_Column_Refrigerators_Jenn-Air_JBRFR30IGX.html#tab-faq)

Dimensions	
Depth	27 1/8
Width	29 3/4
Height	79 7/8
Cabinet Width	30
Carton Depth	32
Carton Height	87
Carton Width	33
Cutout Depth	25
Cutout Height	84
Cutout Width	30
Depth Closed Excluding Handles	24 1/2
Depth Closed Including Handles	27 1/8
Depth Excluding Doors	23 11/16
Depth With Door Open 90 Degrees	56 3/8
Gross Weight	542
Height To Top Of Cabinet	84
Net Weight	501.7
Capacity (cubic feet)	17.00
Certifications	
Prop 65	Standard
Energy Star® Qualified	ENERGY STAR® Qualified
Sabbath Mode	Yes
Star K Certified	Yes
CEE Tier	Not Rated
UL	Yes
Description	
Type of Refrigerator	Column Refrigerator
Installation Option	Built-In
AHAM Volumes And Shelf Area	
Refrigerator Volume (Cu Ft)	17.00
Total Volume (Cu Ft)	17.0
Details	
Advance Foam Insulation	99.9% lower Global Warming Potential and Better Energy Performance
Cooling Type	Single Evaporator
Counter Depth	Yes
Door Style	Flat
Exterior	
Base Grille Color	Black
Cabinet Color	Black
Cabinet Finish	Smooth
Door Color	Panel Ready
Door Finish	Textured
Door Opening	Right
Handle Material	Metal
Levelers	2 Black
Handle Type	Reach-Through Handle

LOT4

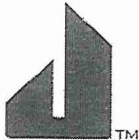
Reversible Door Controls	No
Automatic Defrost	Yes
Control Type	Electronic Touch
Door Ajar/Open Alarm	Yes
Control Lockout	Yes
Control Location	Interior Up Front
Max Cool/Fast Cool	Yes
Water Filter Indicator/Reset	Yes
Temperature Range	33F to 45F
Refrigerator Compartment	
Number of Interior Shelves	3
Pantry Drawer	No
Conventional Shelves	3 Adjustable Full-Width Glass
Shelf Supports	Cantilever
Temperature-Controlled Drawers	3 Full Width
Door Bins	4 Adjustable Gallon
Liner Finish	Obsidian(MetallicBlack)
Supplementary Containers	Herb Tender™ Container
Electrical	
Amps	15
Hz	60
Filters	
Produce Preserver	Yes
Water Filter Part Number	EDR2RXD1
Refrigerator Details	
Deli Drawer	1 Flexi-Slide Bin
Lighting	Strip and Tower LED Lighting
Dispenser	
Dispenser Options	Filtered Water
Dispenser Pad Color	Black
Design Type	
Design Expression	Panel-Ready
Dispenser Details	
Dispenser Type	Interior Water Only
Compatibility	
Works With	WiFi,App,Remote Access
Refinement	
Style	Freezers

21TS11999 21AC11999 2111999 21CR11999 21TA11999 21TP11999 21UV11999

&PIΣOKH6EAM

//

LOT 41



18" PANEL-READY BUILT-IN COLUMN FREEZER, LEFT SWING

Signature Features

JBZFL18IGX

OVER 250 CONFIGURATIONS

Freezer or refrigerator. Left-hand or right-hand swing. One, two, three columns in a row. Four different widths. With 12 one-unit options, 75 two-unit combinations and over 250 three-unit combinations, configuration is where bespoke begins.

ECLIPTIC LIGHTING

Live beyond the shadow. Abandoning the dark spots cast by dated puck lighting, over 650 LEDs frame and fill your column, coming alive at a touch of the controls. Each zone awakens and pulses as you mold your column to your desires.

EMOTIVE CONTROLS

At waist-level, this panel invites touch, challenging the idea that controls should be out of sight and out of reach. Control every zone and choose presets to coax out the flavors of your produce, meat, beverages, spirits and beyond—and dominate your domain according to your desires.

DIVINITY FREEZING

One provocative air tower. Two precision sensors. Calibrated every second. United, they keep freezer temperatures from swinging and spirits impeccably chilled.

DARING OBSIDIAN INTERIOR

Inspired by the beauty of volcanic glass, this industry-exclusive dark finish erupts with reflective, high-contrast style. Reject the unfeeling, lifeless vessel of harsh steel. Let fine foods and beverages emerge from the interior of your columns like vibrant art, begging to be devoured.

MUSHED ACOUSTICS

Unheard of. We're decibel for decibel one of the quietest leading luxury built-in columns out there. Casting off abrupt start and stop cycles, our columns ditch swings in temperature and humidity, running unobtrusively in the background. Brilliance doesn't have to announce itself, it just is.

REMOTE ACCESS

Open door. Power outages. Filter changes. Connect to WiFi for real-time notifications and control your columns from anywhere. Tap and swipe on both iOS and Android devices.

SOLID GLASS AND METAL

All-metal bin and shelf frames. Thick, naturally odor-resistant solid glass. A forcefield at the edge that prevents spillovers. To hell with cheap plastic in luxury door bins, shelves and liners.

SHAPESHIFTER DRAWERS (FREEZER)

Devote a drawer to gelato. Or cookie dough. Or vodka. Use all of our presets to customize these drawers to ever-shifting indulgences.



Technical Specifications

Configuration and Overview

Advance Foam Insulation: 99.9% lower Global Warming Potential and Better Energy Performance

Counter Depth: Yes

Number of Doors: 1

Installation Option: Built-In

Appearance

Hidden Hinge: Yes

Handle Material: Metal

Door Style: Flat

Reversible Door: No

Cabinet Finish: Smooth

Filter Details

Water Filter Indicator/Reset: Yes

Produce Preserver: No

Freezer Details

Freezer Number of Shelves: 3

Dispenser Details

Types of Ice: Cubed

Icemaker Details

Icemaker Location: Freezer

Certifications

Prop 65: Standard

Energy Star® Qualified: ENERGY STAR® Qualified

Details

Cooling Type: Single Evaporator

Freezer Compartment

Light: LED

Compatibility

Connectivity: iOS

Works With:

- WiFi
- App
- Remote Access

Description

Refrigerator Type: Column Freezer

Icemaker

Icemaker: Factory Installed

Dimensions

Freezer Volume: 2264.00 l

Capacity: 8.00

Total Volume: 2264.00 l

Depth: 6889.75 cm

Height: 21209.00 cm

Net Weight: 166921856.00 kg

Width: 4508.50 cm

Controls

Control Lockout: Yes

Door Ajar/Open Alarm: Yes

Automatic Defrost: Yes

Control Location: Interior Up Front

Design Type

Design Expression: Panel-Ready

LOT 4

JBZFL18IGX
Col. Freezer



25

(/img/xxlarge/jenn-air/upright-freezer/JBZFL18IGX_1.jpg)



xxlarge/jenn-air/upright-freezer/JBZFL18IGX_5.jpg)(/img/xxlarge/jenn-air/upright-freezer/JBZFL18IGX_6.jpg)(/img/xxlarge/jenn-air/upright-freezer/JBZFL18IGX_7.jpg)(/img/xxlarge/jenn-air

>> View 2020 JennAir Parts & Accessories Guide <<

Change to Jenn-Air JBZFR18IGX (https://www.canadianappliance.ca/product/Jenn-Air_JBZFR18IGX_Built_In_Freezer_Jenn-Air_JBZFR18IGX.html)

Promo

Price History

Pay only \$9,307.49 CAD if you buy 2 or 3 eligible Jenn-Air items

Pay only \$8,759.99 CAD if you buy 4 or more eligible Jenn-Air items

AIR MILES

Description & Features

Specs

Manuals

Video

Reviews

Rebates

Warranty

Financing

Install

FAQ

Earn 273 Air Miles

Rebates

Warranty

Financing

Install

FAQ

Earn 273 Air Miles

Rebates

Warranty

Financing

Install

FAQ

LOT 41

(https://www.canadianappliance.ca/product/Jenn-Air_JAC1836HS_Product_Accessories_Jenn-Air_JAC1836HS.html)

Add: 1

JAC18HS (https://www.canadianappliance.ca/product/Jenn-Air_JAC18HS_Product_Accessories_Jenn-Air_JAC18HS.html) Jenn-Air JAC18HS Refrigerator Toe Kick

(https://www.canadianappliance.ca/product/Jenn-Air_JAC18HS_Product_Accessories_Jenn-Air_JAC18HS.html)

Add: 1

W11220303 (https://www.canadianappliance.ca/product/Whirlpool_W11220303_Product_Accessories_Whirlpool_W11220303.html) Whirlpool W11220303 Handle Kit
(https://www.canadianappliance.ca/product/Whirlpool_W11220303_Product_Accessories_Whirlpool_W11220303.html)

- Description & Features (https://www.canadianappliance.ca/product/Jenn-Air_JBZFL18IGX_Built_In_Freezer_Jenn-Air_JBZFL18IGX.html#tab-features)
- Specs (https://www.canadianappliance.ca/product/Jenn-Air_JBZFL18IGX_Built_In_Freezer_Jenn-Air_JBZFL18IGX.html#tab-specs)
- Manuals (https://www.canadianappliance.ca/product/Jenn-Air_JBZFL18IGX_Built_In_Freezer_Jenn-Air_JBZFL18IGX.html#tab-manuals)
- Video (https://www.canadianappliance.ca/product/Jenn-Air_JBZFL18IGX_Built_In_Freezer_Jenn-Air_JBZFL18IGX.html#tab-video)
- Reviews (https://www.canadianappliance.ca/product/Jenn-Air_JBZFL18IGX_Built_In_Freezer_Jenn-Air_JBZFL18IGX.html#tab-reviews)
- Rebates (https://www.canadianappliance.ca/product/Jenn-Air_JBZFL18IGX_Built_In_Freezer_Jenn-Air_JBZFL18IGX.html#tab-rebates)
- Warranty (https://www.canadianappliance.ca/product/Jenn-Air_JBZFL18IGX_Built_In_Freezer_Jenn-Air_JBZFL18IGX.html#tab-warranty)
- Financing (https://www.canadianappliance.ca/product/Jenn-Air_JBZFL18IGX_Built_In_Freezer_Jenn-Air_JBZFL18IGX.html#tab-financing)
- Install (https://www.canadianappliance.ca/product/Jenn-Air_JBZFL18IGX_Built_In_Freezer_Jenn-Air_JBZFL18IGX.html#tab-installation)
- FAQ (https://www.canadianappliance.ca/product/Jenn-Air_JBZFL18IGX_Built_In_Freezer_Jenn-Air_JBZFL18IGX.html#tab-faq)

Dimensions	
Depth	27 1/8
Width	17 3/4
Height	79 7/8
Carton Depth	32
Carton Height	87
Carton Width	26 1/2
Cutout Depth	25
Cutout Height	84
Cutout Width	18
Depth Closed Excluding Handles	24 1/2
Depth Closed Including Handles	27 1/8
Depth Excluding Doors	23 11/16
Depth With Door Open 90 Degree	44 7/16
Gross Weight	405
Height To Top Of Cabinet	84
Net Weight	368.0
Capacity (cubic feet)	8.00
Certifications	
Prop 65	Standard
Energy Star® Qualified	ENERGY STAR® Qualified
Sabbath Mode	Yes
Star K Certified	Yes
UL	Yes
Description	
Type of Refrigerator	Column Freezer
Installation Option	Built-In
AHAM Volumes And Shelf Area	
Freezer Volume (Cu Ft)	8.00
Total Volume (Cu Ft)	8.0
Details	
Advance Foam Insulation	99.9% lower Global Warming Potential and Better Energy Performance
Cooling Type	Single Evaporator
Counter Depth	Yes
Door Style	Flat
Exterior	

Base Grille Color

Black

Cabinet Color
Cabinet Finish

Black
Smooth

Description & Features

Specs

Manuals

Video

Reviews

Rebates

Warranty

Financing

Install

FAQ

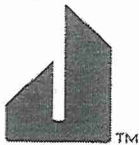
LOT 41

Door Color	Panel Ready
Door Finish	Textured
Door Opening	Left
Handle Material	Metal
Handle Type	Reach-Through Handle
Hidden Hinge	Yes
Number of Doors	1
Reversible Door	No
Controls	
Automatic Defrost	Yes
Control Type	Electronic Touch
Door Ajar/Open Alarm	Yes
Control Lockout	Yes
Control Location	Interior Up Front
Max Cool/Fast Cool	Yes
Water Filter Indicator/Reset	Yes
Temperature Range	33F to 45F
Electrical	
Amps	15
Hz	60
Freezer Compartment	
Freezer Number of Shelves	3
Shelves	3 Adjustable Full-Width Glass
Door Type	Swing
Dispenser	
Types of Ice	Cubed
Freezer Details	
Light	LED
Icemaker	
Icemaker	Factory Installed
Icemaker Location	Freezer
Design Type	
Design Expression	Panel-Ready
Filters	
Water Filter Part Number	EDR2RXD1
Produce Preserver	No
Compatibility	
Works With	WiFi,App,Remote Access
Refinement	
Style	Freezers

21TS10949 21AC10949 2110949 21CR10949 21TA10949 21TP10949 21UV10949

&PTIΣQKH6EAD

LOT 41 WRV



NOIR™ 24" BUILT-IN DISHWASHER, 38 DBA

Signature Features

QUIETEST LUXURY
DISHWASHER
BRAND¹*

*Based on normal cycle
^{1 *Based on Normal Cycle.}

ENHANCED CINEMATIC
LIGHTING

Shine a spotlight on clean. Packed with 18 LED lights that ramp up to full intensity, JennAir brand's best lighting coverage chases away shadows to illuminate daring Obsidian racks.

1 TO 24-HOUR DELAY
START OPTION

Postpone the start of your wash cycle in 1-hour increments for up to 24 hours. Start your wash cycle on your terms.

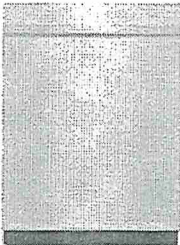
38 DBA
TRANQUILITY²
SYSTEM

JENNAIR dishwashers run quietly without sacrificing performance
^{2 Based on normal cycle.}

15 PLACE SETTING
CAPACITY

Intimate affairs. Lavish after-parties. Enough capacity for a service of 15 means there's always room for one more.

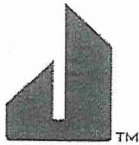
JDPSS246LM



Technical Specifications

Description		Dimensions
Dishwasher Type: Built-In	2nd Level Rack	Depth: 6223.00 cm
Exterior	Glides: Smooth Glide	Height: 8509.00 cm
Control Panel Color: Black	Lower Rack	Net Weight: 40369688.00 kg
Magnetic Door: No	Glides: Ball Bearings	Width: 6064.25 cm
Handle Material: Metal	Utility Basket: No	Number of Place Settings: 15
Toe Panel Color: Black	Silverware Basket	Gross Weight: 45359200.00 kg
True Hold Door: Yes	Culinary Basket: Yes	Controls
Details	Covers: Yes	Automatic Temperature Controls: Yes
Number of Racks: 3	Third Level Rack	Status Light: Multi-Color
Built-In Water Softener: No	Removable: Yes	Electrical
Wash System: Filter	Type: Third rack with dual rotating wash tubes	Power Cord Included: No
Water Filtration: Yes	Certifications	Design Type
Cycles	Energy Star® Qualified: ENERGY STAR® Qualified	Design Expression: NOIR™
Number of Wash Cycles: 6	NSF® Certified: Yes	
2nd Level Rack	Energy Rating: 270	
Cushion-Tip Tines: Yes	CUL: Yes	
	Kosher Consumer Friendly: Yes	
	Prop 65: Standard	

LOT 41 WREV



36" RISE™ GAS PROFESSIONAL-STYLE RANGE

Signature Features

34 RANGE CONFIGURATIONS

With 34 total range configurations, it's up to you. Infused with chrome, our griddle cleans up well after heavy usage. Fire up the grill for indoor entertainment on your terms.

DUAL-STACKED POWERBURNERS

Two stacked, symmetrical flames bloom and retreat at your inclination, offering total control over heat levels. High-heat searing and wok cooking. Low, slow simmer and melt. Infinite intermediate settings satisfy every appetite.

GLIDE RACKS

Smooth moves. Each rack glides in and out fluidly and quietly, featuring flat tines for peak aesthetics.

FLAT TINE RACKS

Each rack features dramatic, unexpected flat tines, delivering increased contact with cookware for exceptional heat transfer.

JENNAIR® CULINARY CENTER

With step-by-step support, savor the full culinary experience backed by customized algorithms, featuring full-color food photography, doneness levels, pan types and menu-specific tips.

CAST IRON GRATES

Robust geometric grates form one graceful surface, crafted to withstand heavy woks and cookware.

REMOTE ACCESS¹

Preheat. Check cooking status. Personalize settings. Connect to WiFi for real-time notifications and control your appliance from anywhere. Tap and swipe on both iOS and Android devices.*
¹ Appliance must be set to remote enable. WiFi & App required. Features subject to change. For details and privacy info, visit jennair.ca/connect. </sup>

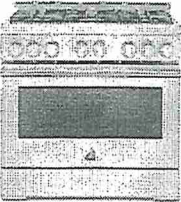
HALO-EFFECT KNOBS

A halo of luminary LEDs glows softly when the burner is lit or the oven is on.

CINEMATIC LIGHTING

Lights, camera, cook. Halogen lighting increases to full intensity, minimizing shadows and dramatically showcasing food.

JGRP436HL



Dimensions

Capacity: 5-1/10
Depth: 7572.38 cm
Height: 9842.50 cm
Net Weight: 176447288.00 kg
Width: 9112.25 cm

Electrical

Power Cord Included: Yes
Design Type
Design Expression: RISE™

Technical Specifications

Configuration and Overview

Size:

- 9144.00 cm
- 36 cm

Fuel Type: Gas

Range Type: Freestanding

LP Convertible: Yes - Kit Included

Features

Door Removable: Yes

Power On Indicator Light: Yes

Automatic Convection Conversion Temperature Adjust: Yes

Automatic Shut-Off: No

Interior Color: Black

Oven Control Location: Front

Oven Control Type: Knobs

Broiler Location: Top of Oven

Oven Light Switch Location: Oven Control

Oven Interior Width:

- 7594.60 cm
- 29-9/10 cm

Oven Interior Depth:

- 4140.20 cm
- 16-3/10 cm

Oven Interior Height:

- 3632.20 cm
- 14-3/10 cm

Hidden Bake Element: No

Convection Functions:

- Bake
- Roast

Appearance

Cooktop Details

Number of Grates: 6

Auto Re-ignition: Yes

Cooktop Control Knob Type: Metal

Cooktop Control Location: Front

Grate Details:

- Dishwasher Safe
- Matte Finish
- Porcelain Coated Cast Grates
- Individual

Cooktop Configuration: All Burners

Certifications

Prop 65: Standard

Features

Natural Gas Convertible: Yes

Power Outage Compatible: Yes (Gas Cooktop Burners Only)

Details

Number of Rack Guides: 5

Convection Element Power: 1200

Oven Light Type: Halogen

Rack Guide Type: Molded

Number of Oven Racks: 3

Cooktop Surface Material: Porcelain Coated Steel

Compatibility

Connectivity: Nest

Works With:

- WiFi
- App
- Remote Access
- Voice Controlled

LOT 41 WRV.

Handle Material: Metal

Cooktop Details

Heating Element On Indicator Light: No

Hot Surface Indicator Light: No

Cooktop Surface Color: Black

Ignition Type: Flame-Sensing™ Re-ignition

Number of Cooking Element-Burners: 6

Configuration

Oven Configuration: Single Oven

Range Configuration: Freestanding

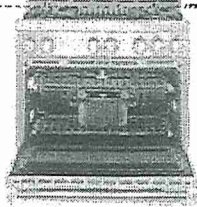
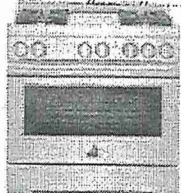
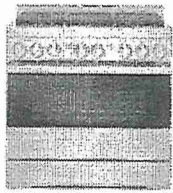
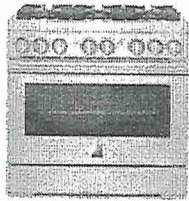
Description

Fuel Type: Gas

Size: 36

®/™ © 2022 JennAir. All rights reserved. Specifications subject to change without notice.

LOT 4 / WRU



(https://www.canadianappliance.ca/product/Jenn-Air_JDRP436HL_Range_Hood)	(https://www.canadianappliance.ca/product/Jenn-Air_JGRP436HM_Range_Hood)	(https://www.canadianappliance.ca/product/Jenn-Air_JGRP536HL_Range_Hood)	(https://www.canadianappliance.ca/product/Jenn-Air_JGRP636HL_Range_Hood)
JDRP436HL	JGRP436HM	JGRP536HL	JGRP636HL
(https://www.canadianappliance.ca/product/Jenn-Air_JDRP436HL_Range_Hood)	(https://www.canadianappliance.ca/product/Jenn-Air_JGRP436HM_Range_Hood)	(https://www.canadianappliance.ca/product/Jenn-Air_JGRP536HL_Range_Hood)	(https://www.canadianappliance.ca/product/Jenn-Air_JGRP636HL_Range_Hood)
\$17,549.99 CAD	\$9,349.99 CAD	\$9,849.99 CAD	\$9,849.99 CAD

- Description & Features (https://www.canadianappliance.ca/product/Jenn-Air_JGRP436HL_Range_Hood)
- Specs (https://www.canadianappliance.ca/product/Jenn-Air_JGRP436HL_Range_Hood)
- Manuals (https://www.canadianappliance.ca/product/Jenn-Air_JGRP436HL_Range_Hood)
- Video (https://www.canadianappliance.ca/product/Jenn-Air_JGRP436HL_Range_Hood)
- Reviews (https://www.canadianappliance.ca/product/Jenn-Air_JGRP436HL_Range_Hood)
- Rebates (https://www.canadianappliance.ca/product/Jenn-Air_JGRP436HL_Range_Hood)
- Warranty (https://www.canadianappliance.ca/product/Jenn-Air_JGRP436HL_Range_Hood)
- Financing (https://www.canadianappliance.ca/product/Jenn-Air_JGRP436HL_Range_Hood)
- Install (https://www.canadianappliance.ca/product/Jenn-Air_JGRP436HL_Range_Hood)
- FAQ (https://www.canadianappliance.ca/product/Jenn-Air_JGRP436HL_Range_Hood)

Dimensions		
Depth	29 13/16	
Width	35 7/8	
Height	38 3/4	
Carton Depth	35 1/2	
Carton Height	47 5/8	
Carton Width	41 13/16	
Cutout Depth	24	
Cutout Height	38 3/4	
Cutout Width	36	
Depth Closed Excluding Handles	27 11/16	\$5,888

Depth Closed Including Handles

29 13/16

Full Depth

Description & Features

Specs

Manuals

Video

Rebates

Warranty

Financing

Install

FAQ

800-888-8888

LOT 41 WRV

Depth With Door Open 90 Degree	46 1/2	
Gross Weight	444	
Net Weight	389.0	
Capacity (cubic feet)	5.10	
Certifications		
Prop 65	Standard	
ADA Compliant	No	
UL	Yes	
Description		
Fuel Type	Gas	
Size (in.)	36	
Configuration and Overview		
Range Type	Freestanding	
Exterior		
Door Removable	Yes	
Door Type	Metal & Glass	
Oven Window Size	Large	
Handle Type	Towel Bar	
Handle Color	Stainless Steel	
Handle Material	Metal	
Features		
Automatic Convection		
Conversion Temperature	Yes	
Adjust		
Hot Surface Indicator Light	No	
Griddle	NA	
Heating Element On Indicator Light	No	
LP Convertible	Yes - Kit Included	
Natural Gas Convertible	Yes	
Power On Indicator Light	Yes	
Power Outage Compatible	Yes (Gas Cooktop Burners Only)	
Selection	Automatic Door Latch,Bake,Broil,Cancel/Off,Convect Modes,Delay Start,Favorites,Proofing,Rapid Preheat,Sabbath Mode,Slow Cook,Temperature Probe,Warm Hold	
Cooktop Details		
Cooktop Surface Color	Black	
Cooktop Control Knob Color	Stainless Steel	
Cooktop Control Location	Front	
Cooktop Control Type	Knobs	
Auto Re-ignition	Yes	
Cooktop Element Style	Sealed Burner	
Cooktop Configuration	All Burners	
Cooktop Control Knob Type	Metal	
Grate Details	Dishwasher Safe,Individual,Matte Finish,Porcelain Coated Cast Grates	
Ignition Type	Flame-Sensing™ Re-ignition	
Number of Cooking Element-Burners	6	
Number of Grates	6	
Left Front Element-Burner Power	20,000 BTU	
Center Front Element-Burner Power	20,000 BTU	
Left Rear Element-Burner Power	18,000 BTU	
Center Front Element-Burner Type	Dual	\$8,300

Description & Features

Specs

Manuals

Video Reviews

Warranty

Financing

Install

FAQ

LOT 41 WRV

Left Rear Element-Burner Type	Dual
Center Rear Element-Burner Type	Dual
Right Front Element-Burner Power	20,000 BTU
Left Front Element-Burner Type	Dual
Right Rear Element-Burner Type	Dual
Right Front Element-Burner Type	Dual
Right Rear Element-Burner Power	18,000 BTU
Details	
Cooktop Surface Material	Porcelain Coated Steel
Automatic Shut-Off	No
Interior Color	Black
Oven Control Knob Color	Stainless Steel
Oven Control Location	Front
Oven Control Knob Type	Metal
Oven Control Type	Knobs
Broiler Location	Top of Oven
Bake Element Power	17000 BTU
Hidden Bake Element	No
Broiler Element Power	11000 BTU
Oven Light Switch Location	Oven Control
Convection Element Power (watts)	1200
Convection Functions	Bake, Roast
Convection Element Type	Dual-Fan
Number of Oven Lights	3
Oven Light Type	Halogen
Oven Interior Depth(IN, inches)	16.3
Number of Rack Guides	5
Oven Interior Height(IN, inches)	14.3
Oven Interior Width(IN, inches)	29.9
Number of Oven Racks	3
Oven Rack Type	Gliding Roll-Out
Rack Guide Type	Molded
Electrical	
Amps	15
Hz	60
Volts	120
Power Cord Included	Yes
Oven Details	
Oven Cooking System Configuration	True Convection
Oven Configuration	Single Oven
Range Configuration	Freestanding
Refinement	
Style	Ranges
Design Type	
Design Expression	RISE™
Compatibility	
Works With	WiFi, App, Remote Access, Voice Controlled

\$5,500

Description & Features

Specs

Manuals

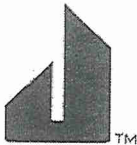
Video Reviews Warranty

Financing

Install

FAQ

LOT 41 WRV.



JENNAIR® NOIR 60CM BUILT-IN SPEED OVEN

Signature Features

JENNAIR® ASSISTED COOKING

Take your pick. With a wide variety of pre-set oven modes and specialty settings, you can create a wide variety of dishes minus the guesswork—using microwave, convection or both.

3.5-INCH FULL-COLOR LCD DISPLAY

The full-color LCD touchscreen is compact and packed with dynamic features that present you with a guided JennAir® Assisted Cooking experience. Navigate effortlessly through settings with inviting controls that respond to your touch.

1.4 CUBIC FOOT CAPACITY

SPEED-COOK

Renounce accepted limitations of the microwave. Three potent cooking methods converge to deliver convection's steady heat, microwave speed and broiled caramelization in each oven-caliber bite.

REMOTE ACCESS¹</sup>

Preheat. Check cooking status. Personalize settings. Connect to WiFi for real-time notifications and control your appliance from anywhere. Tap and swipe on both iOS and Android devices. ² (Appliance must be set to remote enable. WiFi & App required. Features subject to change. For details and privacy info, visit jennair.com/connect.)
² Appliance must be set to remote enable. WiFi & App required. Features subject to change. For details and privacy info, visit jennair.com/connect. </sup>
¹ Appliance must be set to remote enable. WiFi & App required. Features subject to change. For details and privacy info, visit jennair.com/connect.</sup>

TRUE CONVECT & MICROWAVE COMBINATION COOKING

Let your appetite run wild—broil, bake or warm with convection and microwave energy.

SENSOR COOKING

An intuitive sensor responds to humidity levels, altering time and power for results that aim to please.

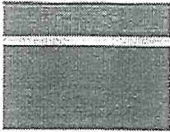
NOIR™ DESIGN EXPRESSION

Sculpted in stainless steel, the NOIR™ Design Expression features hidden lace textures, discoverable only by touch.

STEALTH FLUSH DESIGN

Flush-to-cabinet design creates a subtly striking, unbroken line across the kitchen. With 1/8" reveals, the speed oven merges discreetly into cabinetry—a bold move for open kitchen designs, islands and creative explorations.

JMC6224HM



Dimensions

- Capacity: 1-2/5
- Depth: 5556.25 cm
- Height: 4651.38 cm
- Net Weight: 8618248.00 kg
- Width: 5953.12 cm
- Oven Capacity: 396.20 l

Design Type

Design Expression: NOIR™

Electrical

- Volts: 240/208
- Watts: 3400

Controls

Display Color: Full Color

Technical Specifications

Configuration and Overview

- Size:
- 5842.00 cm
 - 23 cm

Fuel Type: Electric

Features

Interior Coating: Stainless Steel

Light Type: Halogen

- Oven Interior Width:
- 4508.50 cm
 - 17-3/4 cm

- Oven Interior Depth:
- 4191.00 cm
 - 16-1/2 cm

- Oven Interior Height:
- 2222.50 cm
 - 8-3/4 cm

Compatibility

- Connectivity:
- Amazon Alexa
 - Android
 - Google Assistant
 - iOS
 - Nest

Compatibility

- Works With:
- WiFi
 - App
 - Remote Access
 - Voice Controlled

Certifications

- ADA Compliant: Yes
- Kosher Consumer Friendly: No
- Prop 65: Standard
- UL: Yes

Configuration

Oven Configuration: Single Oven

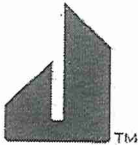
Details

- Convection Element Power: 1100
- Number of Oven Racks: 1

Description

- Fuel Type: Electric
- Size: 24

LOT 41 WRL



JENNAIR® NOIR™ 24" BUILT-IN COFFEE SYSTEM

Signature Features

6 CUSTOMIZABLE PROFILES

Bold flavor, refined to your taste. Craft up to six individualized profiles with custom drink choice, strength and size to quickly select your favorite drink. Profiles, complete with individual icons, are displayed in order of frequency of use.

3.5-INCH FULL-COLOR LCD DISPLAY

This full-color LCD touchscreen is compact and packed with dynamic features that allow you to customize cafe-style drinks to your individual taste. Navigate effortlessly through settings with inviting controls that respond to a light touch.

WHOLE-BEAN COFFEE GRINDER

Finely ground, flavor rich. This grinder's barista-style metal construction transforms the freshest beans into the most flavorful coffees, espressos, cappuccinos and more.

GROUND COFFEE COMPATIBILITY

Indulge percolating cravings with coffee, espresso and cappuccinos made with pre-ground coffee or whole beans.

FLEXIBLE INSTALLATION

Make your move. With only a 120-volt connection required and an easy-to-fill water reservoir, this system installs anywhere in your home.

CUP TRAY WITH INTEGRATED DRIP TRAY

Gourmet brews flow into waiting cups nestled safely in the tray. Beneath, stray drips and water from rinse cycles are captured in the integrated drip tray, which is easily removed and cleaned.

DUAL DISPENSING SPOUTS

Serve guests simultaneously. Height-adjustable, dual-dispensing spouts let you brew two cups of barista-style coffee or espresso at one time.

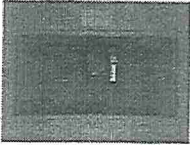
NOIR™ DESIGN EXPRESSION

Sculpted in stainless steel, the NOIR™ Design Expression features hidden lace textures, discoverable only by touch.

STEALTH FLUSH DESIGN

Create an unbroken silhouette. Discreet ¼" reveals envelop every side, as dark interiors and glass expanses pull you in.

JJB6424HM



Dimensions

Net Weight: 24493968.00 kg
Depth: 5000.62 cm
Height: 4540.25 cm
Width: 5953.12 cm

Gross Weight: 29029888.00 kg

Design Type

Design Expression: NOIR™

Technical Specifications

Configuration and Overview

Capacity: 2.4 Liters

Details

Coffee Measuring Scoop: Yes

Dual Dispensing Spouts: Yes

LED Lighting: Yes

Pre-Heat Rinse Function: Yes

Removable Brewing Unit: Yes

Serving Size Customization: Yes

Temperature Customization: Yes

Water Hardness Setting: Yes

Features

Automatic Brewed Grounds Collection: Yes

Concealed Storage Trays: Yes

Features

Cup Tray with Integrated Drip Tray: Yes

Empty Waste Coffee Container Alert: Yes

Fill Beans Container Alert: Yes

Fill Tank Alert: Yes

Flush-to-Cabinet Installation Options: Yes

Ground Coffee Compatibility: Yes

Options

Selection Options:

- Cappuccino Option
- Coffee-Espresso Brewing Option
- Frothing System with Integrated Milk Container
- Hot Water Dispenser

Certifications

Prop 65: Standard



SITE COPY

CONSTRUCTION SUMMARY

2185715 Ontario Inc.

PURCHASERS: PARAMJIT DHINDSA and SARABJIT,K GILL

TEL: RES.: 289-544-5229

LOT NUMBER	PHASE	HOUSE TYPE	CLOSING DATE
041	1	ISABELLA-OPT MAIN-4 BEDROOM-ELEVATION B	

Date Added: 05-Oct-22

Invoice Number: 8372

1 - Install Standard Cable Rough-Ins (x2) and Install Standard Telephone Rough-Ins (x2) (See Sketch)

Note:

1 - MAIN HALL - Delete builders standard ceiling lights. Install SIX (6) LED POT LIGHTS with ONE (1) Seperate Switch at Main Hall (See Sketch)

Note: **TEN (10) Pot Lights with ONE (1) Switch Included in Standard Features and Finishes**

1 - FAMILY ROOM - In addition to builders standard ceiling light, Install FOUR (4) LED POT LIGHTS with ONE (1) Seperate Switch at Family Room (See Sketch)

Note: **TEN (10) Pot Lights with ONE (1) Switch Included in Standard Features and Finishes** - Purchaser Paying for Additional Switch Only

1 - CLARIFICATION;

EXTERIOR - GARAGE DOORS - Install STANDARD Exterior Handle with Lock on Garage Doors

Note:

1 - MAIN FLOOR - FLOORING - HARDWOOD - Install Upgrade Hardwood Flooring - 5" x 3/4" VINTAGE WHITE OAK (Character UVF) APOLLO - To be installed throughout main floor in lieu of builders standard hardwood, where applicable.

Note: To Include; Main Hall, Living Room/Dining Room, In-Law Suite, Family Room & Applicable Landings (See Sketch)

1 - STAIRCASE VS FLOORING

WOOD SPECIES DIFFERENCE:

STAIRCASE - The purchaser was advised and therefore accepts and acknowledges that the wood species of the staircase and flooring chosen do not match. This difference may result in a stain colour variance.

Note: The purchaser agrees that the vendor is to be exempt from any and all claims by the purchaser regarding this colour variance.

1 - STAIRCASE VS FLOORING

STAINING DIFFERENCE:

STAIRCASE - The purchaser was advised and therefore accepts and acknowledges that the stain of the staircase and flooring chosen do not match. This difference might result in an undesirable colour variance.

Note: The purchaser agrees that the vendor is to be exempt from any and all claims by the purchaser regarding this colour variance.

1 - KITCHEN / BATHROOMS & LAUNDRY ROOM - SEE QUALITY TOPS & KITCHENS FOR ALL KITCHEN / BATHROOMS & LAUNDRY ROOM UPGRADES / LAYOUTS (See Attached QTK Paperwork)

Note:

1 - KITCHEN - Accommodate Applicable Electrical for Chimney Style Hood Fan that will be installed by the purchaser After Closing (See QTK Layout)

Note: **Purchaser accepts & acknowledges that the vendor will be exempt from any possible damages created by installing their own chimney style hood fan after closing**

PRICE IS SUBJECT TO CHANGE ONCE APPLIANCE SPECIFICATIONS HAVE BEEN SUBMITTED AND REVIEWED

1 - KITCHEN - Install Rough-In Wiring for Built-In Microwave at Kitchen (See QTK Layout for Location)

Note: **PRICE IS SUBJECT TO CHANGE ONCE APPLIANCE SPECIFICATIONS HAVE BEEN SUBMITTED AND REVIEWED**

1 - KITCHEN - Install Rough-In Wiring to accommodate Built-In Coffee Machine at Kitchen (See QTK Layout for Location)

Note: **PRICE IS SUBJECT TO CHANGE ONCE APPLIANCE SPECIFICATIONS HAVE BEEN SUBMITTED AND REVIEWED**

1 - KITCHEN - COUNTERTOP - Install Builders Standard Stone Countertop - EMMERSTONE VANILLA WHITE- AND "A" Edge standard To be installed throughout kitchen, where applicable (does not include stone backsplash) (See Sketch)

Note:

1 - KITCHEN - COUNTERTOP - Install ADDITIONAL Standard Stone Countertop - (EMMERSTONE VANILLA WHITE) - To be installed throughout kitchen, where applicable (does not include stone backsplash) (See Sketch)

Note:



SITE COPY

CONSTRUCTION SUMMARY
2185715 Ontario Inc.

PURCHASERS: PARAMJIT DHINDSA and SARABIJIT,K GILL
TEL: RES.: 289-544-5229

LOT NUMBER	PHASE	HOUSE TYPE	CLOSING DATE
041	1	ISABELLA-OPT MAIN-4 BEDROOM-ELEVATION B	

Date Added: 05-Oct-22 Invoice Number: 8372

1 - DISCLAIMER - STONE COUNTERTOP;
KITCHEN - Stone slabs vary in size & all seams are visible & the fabricator reserves the right to position the seams as necessary.
Note:

1 - KITCHEN - KITCHEN SINK - Install Builders Standard Undermount Sink - Blanco Horizon U2 (7" Deep) Undermount Sink - Model #401022
Note:

1 - KITCHEN - KITCHEN FAUCET - Install Builders Standard Faucet - MOEN Method Single Handle Pull-Out (Single Hole) Kitchen Faucet - Model # 7585 – Chrome
Note:

1 - POWDER ROOM - COUNTERTOP - Install Builders Standard Stone Countertop - EMMERSTONE GRAY GALAXY - With Standard "A" Edge
To be installed throughout powder room vanity, where applicable (Includes 3" Splash) (See Sketch)
Note:

1 - MAIN FLOOR ENSUITE - COUNTERTOP - Install Builders Standard Stone Countertop - EMMERSTONE GRAY GALAXY with STANDARD " A " EDGE PROFILE - To be installed throughout main floor ensuite vanity, where applicable (Includes 3" Splash) (See Sketch)
Note:

1 - MASTER ENSUITE - COUNTERTOP - Install Builders Standard Stone Countertop - EMMERSTONE GREY GALAXY with STANDARD " A " EDGE PROFILE - To be installed throughout master ensuite vanity, where applicable (Includes 3" Splash) (See Sketch)
Note:

1 - TWIN BATH 2/3 - COUNTERTOP - Install Builders Standard Stone Countertop - EMMERSTONE MAPLE WHITE with STANDARD " A " EDGE PROFILE - To be installed throughout twin bath 2/3 vanity, where applicable (Includes 3" Splash) (See Sketch)
Note:

1 - BATH #4 - COUNTERTOP - Install Builders Standard Stone Countertop - EMMERSTONE GREY GALAXY with STANDARD " A " EDGE PROFILE - To be installed throughout bath #4 vanity, where applicable (Includes 3" Splash) (See Sketch)
Note:

1 - DISCLAIMER - STONE COUNTERTOP;
POWDER ROOM, MAIN FLOOR ENSUITE, MASTER ENSUITE, TWIN BATH 2/3 & ENSUITE #4 - Stone slabs vary in size & all seams are visible & the fabricator reserves the right to position the seams as necessary.
Note:

1 - PURCHASER HAS ATTENDED A COLOR APPOINTMENT AT THE DECOR CENTRE AND HAS DECLINED ANY ADDITIONAL UPGRADES.Purchaser accepts and acknowledges that there will be no further changes/additions/deletions to be made upon signing on SEPTEMBER 1,2022
Note:

1 - PURCHASER AWARE AND ACCEPTS THAT ANY CHANGES MADE TO UPGRADES AFTER SIGNING THIS PURCHASERS EXTRA FORM ARE SUBJECT TO A MINIMUM ADMINISTRATION FEE OF \$1,000 PLUS A 10% HOLDBACK FEE.
Note:

Date Added: 18-May-22 Invoice Number: 7897

2 - BASEMENT- Install TWO(X2) larger basement windows, 30"x24" (With Possible Window Wells) (See Sketch)
Note:

3 - BASEMENT- Install THREE (X3) 36"x24" larger basement windows (See Sketch) (With Possible window wells)
Note:

1 - BASEMENT- In addition to the basement windows, Install ONE (X1) additional 36"x24" basement window (With Possible window well) (See Sketch)
Note:



SITE COPY

CONSTRUCTION SUMMARY

2185715 Ontario Inc.

PURCHASERS: PARAMJIT DHINDSA and SARABJIT,K GILL

TEL: RES.: 289-544-5229

LOT NUMBER	PHASE	HOUSE TYPE	CLOSING DATE
041	1	ISABELLA-OPT MAIN-4 BEDROOM-ELEVATION B	

Date Added: 18-May-22 Invoice Number: 7897

<p>1 - SIDE EXTERIOR- Install the optional Side Exterior door with applicable coach light (See Sketch)</p> <p>Note:</p>
<p>1 - FRONT EXTERIOR- Delete the builders stanadrd single front door, side lights and transom. Install a Double Extended height Front door with Applicable Peep Hole. (NO Glass on Front Doors)</p> <p>Note:</p>
<p>1 - MINIMUM CHARGE FOR ANY CHANGE TO STRUCTURE / FLOOR PLAN</p> <p>**See Below For Layout Change**</p> <p>Note:</p>
<p>1 - KITCHEN- Increase the kitchen by APPROX. 2'-0". Push wall into the In Law Suite (decrease in Law Suite by Approx. 2'-0").Kitchen wall to be inline with Family Room wall. Install additional builders standard floor tile to accommodate this change.</p> <p>Note: **Delete the return wall at the kitchen entrance and shift the Flat arch(entrance to kitchen) down (See Sketch)</p> <p>**Shift the In Law Suite window to be centred on wall</p> <p>**Kitchen Layout change-Relocate the Fridge and Centre the stove on new wall dimensions</p>
<p>1 - KITCHEN- Install additional builders standard cabinetry (Upper&Lowers) to accommodate the revised layout change (See Sketch)</p> <p>Note: ** The above price/change does not include any further kitchen upgrades or changes**Purchaser is aware taht any built in appliance accommodations will be addressed at time of colour chart appointment between the Design Studio and QTK**</p> <p>**The purchaser will be charged accordingly for additional counter top at time of colour chart as per teh revised layout**</p> <p>**Purchaser to be charged for any electrical required to accommodate any built in appliances at time of Colour Chart**</p>
<p>1 - STAIRS/BASEMENT- Create an open To below basement, Includes Red Oak stairese, applicable railing,pickets and posts(as needed), finished partial basement foyer with 2 builders standard interior doors & trim. (See Sketch)</p> <p>Note: Partial Basement Foyer with standard Laminate 8" Flooring</p>
<p>1 - TWIN BATH 2/3- Delete the builders standard Tub Shower and Install a shower stall. To Include 2x2 floor mosaic, curb with stone top, shower pot light and frameless glass shower (See Sketch)</p> <p>Note:</p>
<p>1 - TWIN BATH #2 (BEDROOM #4)- Purchaser's request to Delete the double sink at vanity and install only ONE sink centred with in the vanity (See Sketch)</p> <p>Note:</p>
<p>1 - FRONT EXTERIOR- Install a Holiday Soffit plug on a single pole switch (See Sketch)</p> <p>Note:</p>
<p>1 - MASTER ENSUITE SHOWER STALL- Increase the master ensuite shower stall by Approx. 1'-0" towards the Toilet Water Closet. Install additional 2x2 mosaic, wall tile, curb with stone top and additional Frameless Glass (See Sketch)</p> <p>Note:</p>
<p>1 - ATTIC/BASEMENT- Install a Conduit Pipe from Attic to Basement (Dropped near electrical panel- final location to be determined by Vendor on Site)</p> <p>Note: **Priced As Per Sylvano**</p>
<p>1 - PURCHASER HAS ATTENDED A STRUCTURAL APPOINTMENT AT THE DESIGN STUDIO AND HAS DECLINED ANY ADDITIONAL UPGRADES</p> <p>Note:</p>
<p>1 - BONUS PACKAGE-PURCHASER TO RECEIVE \$20,000 (INCLUSIVE OF TAXES) WORTH OF UPGRADES AT THE DESIGN STUDIO AT TIME OF COLOUR CHART</p> <p>Note:</p>
<p>1 - PURCHASER AWARE AND ACCEPTS THAT ANY CHANGES MADE TO UPGRADES AFTER SIGNING THIS PURCHASERS EXTRA FORM ARE SUBJECT TO A MINIMUM ADMINISTRATION FEE OF \$1,000</p> <p>Note:</p>

Date Added: Invoice Number: 8225



* INTERIOR COLOUR SCHEME *

Purchasers	Decor Consultant	Model and Elevation	Telephone Res. / Bus	Project	Closing Date	Property
PARAMJIT DHINDSA & SARABJIT, K GILL	Rick Wright	SABELLA-OPT MAIN-4 BEDROOM-ELEVATION B	(289) 544-5229 /	2185715 Ontario Inc.		041

Page 2 of 3

Interior Paint	Cabinet	Countertop	Counter Edge	Handle / Knob
Description	Style			
Master Ensuite	**SEE ATTACHED QTK PAPERWORK**	<input checked="" type="checkbox"/> Emmerstone Grey Galaxy (STD)	<input checked="" type="checkbox"/> " A " EDGE (STD)	SEE QTK
Twin Bath 2/3	**SEE ATTACHED QTK PAPERWORK**	<input checked="" type="checkbox"/> Emmerstone Maple White (STD)	<input checked="" type="checkbox"/> " A " EDGE (STD)	SEE QTK
Bath #4	**SEE ATTACHED QTK PAPERWORK**	<input checked="" type="checkbox"/> Emmerstone Grey Galaxy (STD)	<input checked="" type="checkbox"/> " A " EDGE (STD)	SEE QTK
Main Floor Ensuite	**SEE ATTACHED QTK PAPERWORK**	<input checked="" type="checkbox"/> Emmerstone Gray Galaxy (STD)	<input checked="" type="checkbox"/> " A " EDGE (STD)	SEE QTK
Laundry (2nd Floor)	**SEE ATTACHED QTK PAPERWORK**	SEE QTK PAPERWORK	SEE QTK PAPERWORK	SEE QTK
Powder Room	**SEE ATTACHED QTK PAPERWORK**	<input checked="" type="checkbox"/> Emmerstone Gray Galaxy (STD)	<input checked="" type="checkbox"/> " A " EDGE (STD)	SEE QTK
Mud Room	N/A	N/A	N/A	N/A
Kitchen/Dinette	**SEE ATTACHED QTK PAPERWORK**	<input checked="" type="checkbox"/> Emmerstone Vanilla White (STD)	<input checked="" type="checkbox"/> " A " EDGE (STD)	SEE QTK
Foyer	STANDARD - SILVER BIRCH			
Main Hall	STANDARD - SILVER BIRCH			
In-Law Suite	STANDARD - SILVER BIRCH			
Family Room	STANDARD - SILVER BIRCH			
Living Room	STANDARD - SILVER BIRCH			
Dining Room	STANDARD - SILVER BIRCH			
Upper Hall	STANDARD - SILVER BIRCH			
Upper Den	STANDARD - SILVER BIRCH			
Primary Bedroom	STANDARD - SILVER BIRCH			
Bedroom 2	STANDARD - SILVER BIRCH			
Bedroom 3	STANDARD - SILVER BIRCH			
Bedroom 4	STANDARD - SILVER BIRCH			
Basement Landing	STANDARD - SILVER BIRCH			

Appliance Opening/Dimension

Fridge Size SEE QTK LAYOUT Range SEE QTK LAYOUT

Built-Ins SEE QTK LAYOUT Microwave SEE QTK LAYOUT

Hood Fan SEE QTK LAYOUT Exhaust Opening ☒ 6" ☐ 8"

Dishwasher Cabinet Std 24in Opening

Fireplace

Fireplace	<input checked="" type="checkbox"/> FAMILY ROOM	Fireplace	<input type="text"/> N/A
Location Flooring	<input checked="" type="checkbox"/> 5" HARDWOOD	Location Flooring	<input type="text"/> N/A
Style	<input checked="" type="checkbox"/> VILLA NOVA	Style	<input type="text"/> N/A
Finish	<input checked="" type="checkbox"/> STONE	Finish	<input type="text"/> N/A
Marble	<input type="text"/> N/A	Marble	<input type="text"/> N/A
Hearth	<input type="text"/> NONE	Hearth	<input type="text"/> N/A

Notes

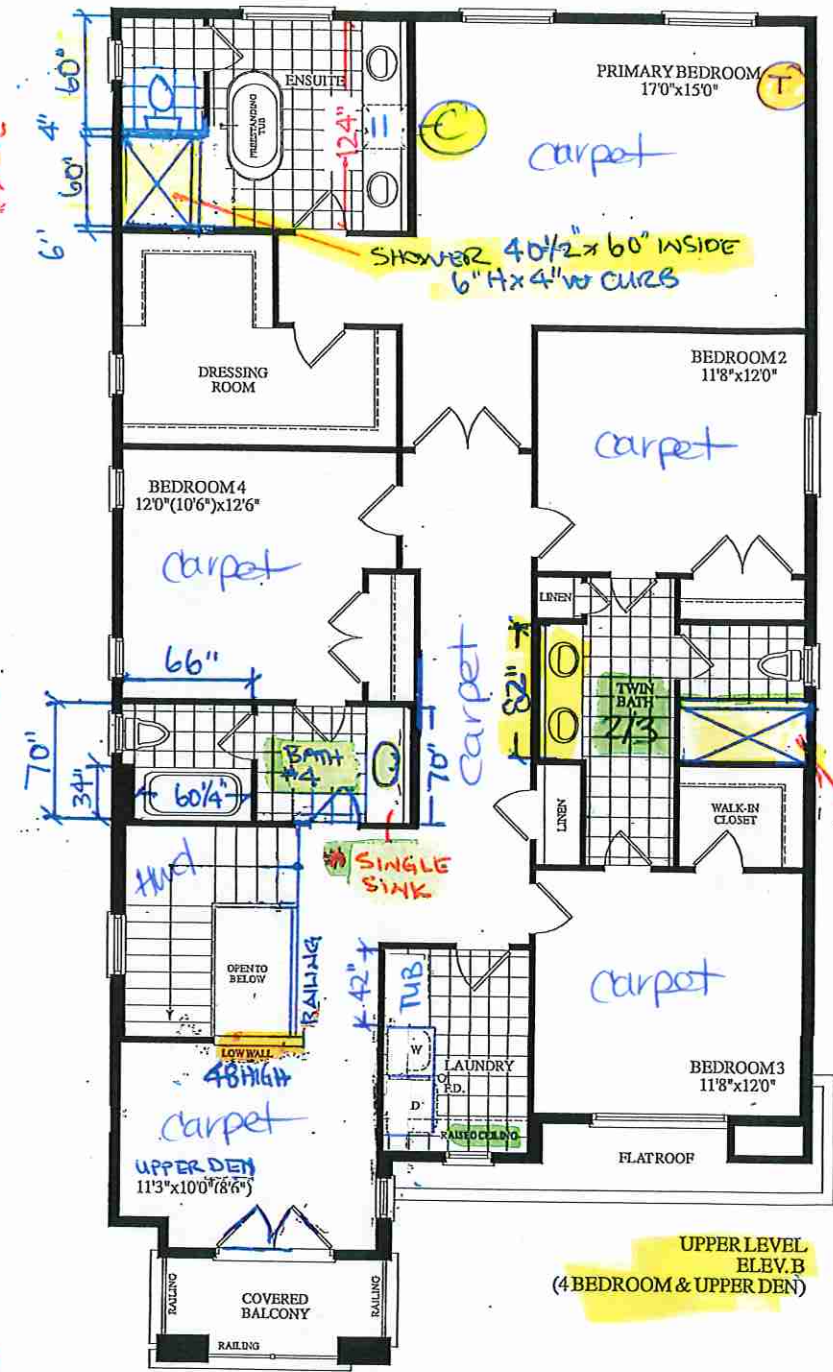
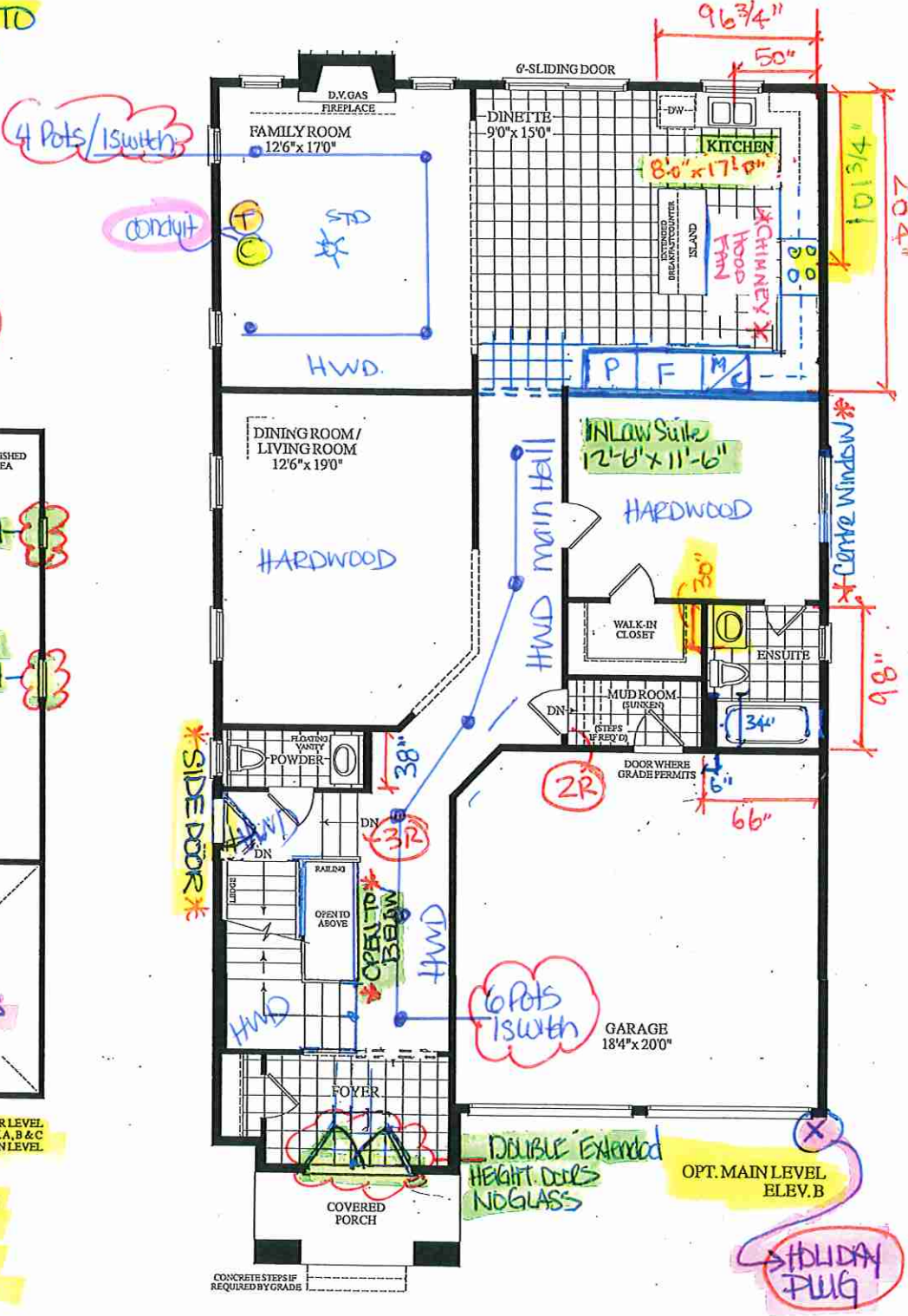
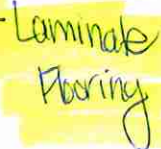
Page 2 of 3

Decor Consultant: 
Rick Wright

Purchaser: 
PARAMJIT DHINDSA

Purchaser: 
SARABJIT, K GILL

Vendor: 
2185715 Ontario Inc.



FRAMELESS GLASS SHOWER
64" x 36" INSIDE - 6" H x 4" W CURBS

LOT 41 . Isabella . Optional Main . 4 BEDROOM

3470 SQ.FT.
ELEV. B





your kitchen. your taste.

Quality Tops & Kitchens Ltd.
80 Sante Drive, Vaughan, ON L4K 3C4
T 416.746.1811 F 905.761.5901
www.QTK.ca info@qtk.ca

PURCHASE AGREEMENT FORM

PURCHASER:		CONTRACTOR:	2185715 ONTARIO INC.
ADDRESS:		SITE:	WEST RIVER VALLEY PH1, BRAMPTON
EMAIL:		MODEL TYPE:	
PHONE #:		LOT #:	41 WRV
PHONE #:		DATE:	Aug 29, 2022 Q9649

The purchaser agrees to buy and Quality Tops & Kitchens Ltd. (QTK) agrees to sell and provide for the purchaser the following articles listed herein and with attached drawing in accordance to the terms and conditions described on the reverse of this agreement form.

ROOM	DESCRIPTION	CATEGORY
KITCHEN	DOOR STYLE: QT 1622 NONE FINISH: FROSTING SPECIES: LP LAMINATE DOOR HARDWARE: DRW HARDWARE: COUNTER TOP: Counter Top by Others	Category 1

ITEM #	QTY	DESCRIPTION	PRICE
TCS2696	*	STRAIGHT PANTRY CABINET - 26"D x 95-1/2"H (STANDALONE)	
STO-B-36	1	MAKE STOVE OPENING 36" WIDE (AT BASE CABINETS)	
DUAS	1	DELETE UPPER ABOVE STOVE	
BGB4	1	3 BIN PULL-OUT RECYCLE UNIT - 24" WIDE CABINET. 2 x 35 L BINS FOR GARBAGE & RECYLCING + 1 x 21 L COMPOST BIN.	
CUST-1	1	BUILT-IN FOR PROFESSIONAL SERIES FRIDGE 26" DEEP - INCREASE TO 48" (NO CLEATS)	
CUST-2	1	BUILT-IN 24" W MICRO & 24" W COFFEE MACHINE w/WOOD DRAWER BELOW -26"s x 95-1/2" H	
CUST-3	1	EXTEND CABINETS TO 24" IN DEPTH TO ACCOMMODATE GARBAGE BIN INCREASING ISLAND OVERALL DEPTH TO 36"	
CUST-6	1	CATEGORY 1 DOOR STYLE AND FINISH: QTC 1622 FROSTING (LP LAMINATE)	
CUST-7	1	CATEGORY 1 HARDWARE -DH00010	
ROOM SUMMARY:			

ROOM	DESCRIPTION	CATEGORY
ENSUITE VANITY	DOOR STYLE: QT 1622 NONE FINISH: TUNDRA (TX) SPECIES: LP LAMINATE DOOR HARDWARE: DRW HARDWARE: COUNTER TOP: Counter Top by Others	Category 1

ITEM #	QTY	DESCRIPTION	PRICE
CUST-3	1	CATEGORY 1 DOOR STYLE AND FINISH: QTC 1622 TUNDRA (TX) LP LAMINATE	
CUST-4	1	CATEGORY 1 HARDWARE: DH00010	
ROOM SUMMARY:			

ROOM	DESCRIPTION	CATEGORY
TWIN BATH VANITY	DOOR STYLE: QT 1622 NONE FINISH: TUNDRA (TX) SPECIES: LP LAMINATE DOOR HARDWARE: DRW HARDWARE: COUNTER TOP: Counter Top by Others	Category 1

ITEM #	QTY	DESCRIPTION	PRICE
CUST-2	1	CATEGORY 1 DOOR STYLE AND FINISH: QTC 1622 TUNDRA (TX) LP LAMINATE	
CUST-3	1	CATEGORY 1 HARDWARE: DH00010	
ROOM SUMMARY:			



your kitchen. your taste.

Quality Tops & Kitchens Ltd.
80 Sante Drive, Vaughan, ON L4K 3C4
T 416.746.1811 F 905.761.5901
www.QTK.ca info@qtk.ca

PURCHASE AGREEMENT FORM

PURCHASER:		CONTRACTOR:	2185715 ONTARIO INC.
ADDRESS:		SITE:	WEST RIVER VALLEY PH1, BRAMPTON
EMAIL:		MODEL TYPE:	
PHONE #:		LOT #:	41 WRV
PHONE #:		DATE:	Aug 29, 2022 Q9649

ROOM	DESCRIPTION	CATEGORY
TWIN BATH 2/3 VANITY	DOOR STYLE: QT 1622 NONE FINISH: FROSTING SPECIES: LP LAMINATE DOOR HARDWARE: DRW HARDWARE: COUNTER TOP: Counter Top by Others	Category 1

ITEM #	QTY	DESCRIPTION	PRICE
VB-RAISE8	1	RAISE VANITY HEIGHT TO 34-1/2" - PER VANITY (>61" LONG)	
CUST-2	1	CATEGORY 1 DOOR STYLE AND FINISH: QTC 1622 FROSTING (SM) LP LAMINATE	
CUST-3	1	CATEGORY 1 HARDWARE: DH00010	
ROOM SUMMARY:			

ROOM	DESCRIPTION	CATEGORY
ENSUITE GROUND FLOOR	DOOR STYLE: QT 1622 NONE FINISH: FROSTING SPECIES: LP LAMINATE DOOR HARDWARE: DRW HARDWARE: COUNTER TOP: Counter Top by Others	Category 1

ITEM #	QTY	DESCRIPTION	PRICE
CUST-2	1	CATEGORY 1 DOOR STYLE AND FINISH: QTC 1622 FROSTING (SM) LP LAMINATE	
CUST-3	1	CATEGORY 1 HARDWARE: DH00010	
ROOM SUMMARY:			

ROOM	DESCRIPTION	CATEGORY
POWDER ROOM VANITY	DOOR STYLE: QT 1022 NONE FINISH: FROSTING SPECIES: LP LAMINATE DOOR HARDWARE: DRW HARDWARE: COUNTER TOP: Counter Top by Others	Category 1

ITEM #	QTY	DESCRIPTION	PRICE
CUST-1	1	FLOATING CABINET w/ FALSE TOP PANEL & DRAWER BELOW - 10 1/2" FFL (OPTION PAID FOR BY BUILDER)	
CUST-2	1	CATEGORY 1 DOOR STYLE AND FINISH: QTS 1022 FROSTING (SM) LP LAMINATE	
CUST-3	1	CATEGORY 1 HARDWARE : DH00010	
ROOM SUMMARY:			

ROOM	DESCRIPTION	CATEGORY
LAUNDRY ROOM	DOOR STYLE: QT 1022 NONE FINISH: FROSTING SPECIES: LP LAMINATE DOOR HARDWARE: DRW HARDWARE: COUNTER TOP: Laminate Top by QTK D354-60	Category 1

ITEM #	QTY	DESCRIPTION	PRICE
CUST-2	1	CATEGORY 1 DOOR STYLE AND FINISH: QTS 1022 FROSTING (SM) LP LAMINATE	



your kitchen. your taste.

Quality Tops & Kitchens Ltd.
80 Sante Drive, Vaughan, ON L4K 3C4
T 416.746.1811 F 905.761.5901
www.QTK.ca info@qtk.ca

PURCHASE AGREEMENT FORM

PURCHASER:		CONTRACTOR:	2185715 ONTARIO INC.
ADDRESS:		SITE:	WEST RIVER VALLEY PH1, BRAMPTON
EMAIL:		MODEL TYPE:	
PHONE #:		LOT #:	41 WRV
PHONE #:		DATE:	Aug 29, 2022 Q9649

ITEM #	QTY	DESCRIPTION	PRICE
CUST-3	1	CATEGORY 1 HARDWARE: DH00010	
		ROOM SUMMARY:	

EXPECTED DELIVERY DATE	TBD	SUB-TOTAL:	
Customers please note all garbage bins, spice baskets, magic corner baskets and other accessories will only be delivered AFTER you move in the house. Please call us to request delivery of these items after you move in. Thank you. ALL CHANGES FINAL UPON SIGNING		TOTAL:	
PLEASE READ ALL THE TERMS AND CONDITIONS ON THE ACCOMPANYING QTK TERMS & CONDITIONS DOCUMENT. BY SIGNING BELOW YOU AGREE TO RECEIVE THE ITEMS LISTED HEREIN AND PAY (ACCORDING TO QTK'S PAYMENT POLICY), AND HAVE READ AND UNDERSTOOD THE TERMS & CONDITIONS AS OUTLINED IN THE QTK TERMS & CONDITIONS DOCUMENT.		HST	
		GRAND TOTAL:	
DEPOSIT 1 DATE: _____		DEPOSIT 1:	
DEPOSIT 2 DATE: _____		DEPOSIT 2:	

BALANCE TO BE PAID IN FULL BY DUE DATE: _____	CUSTOMER INITIAL(S): _____
---	----------------------------

CUSTOMER SIGNATURE: Pamela Dhillon

DATE: Oct-05-2022

CUSTOMER SIGNATURE: Sanjay Gill

DATE: Oct-5-2022

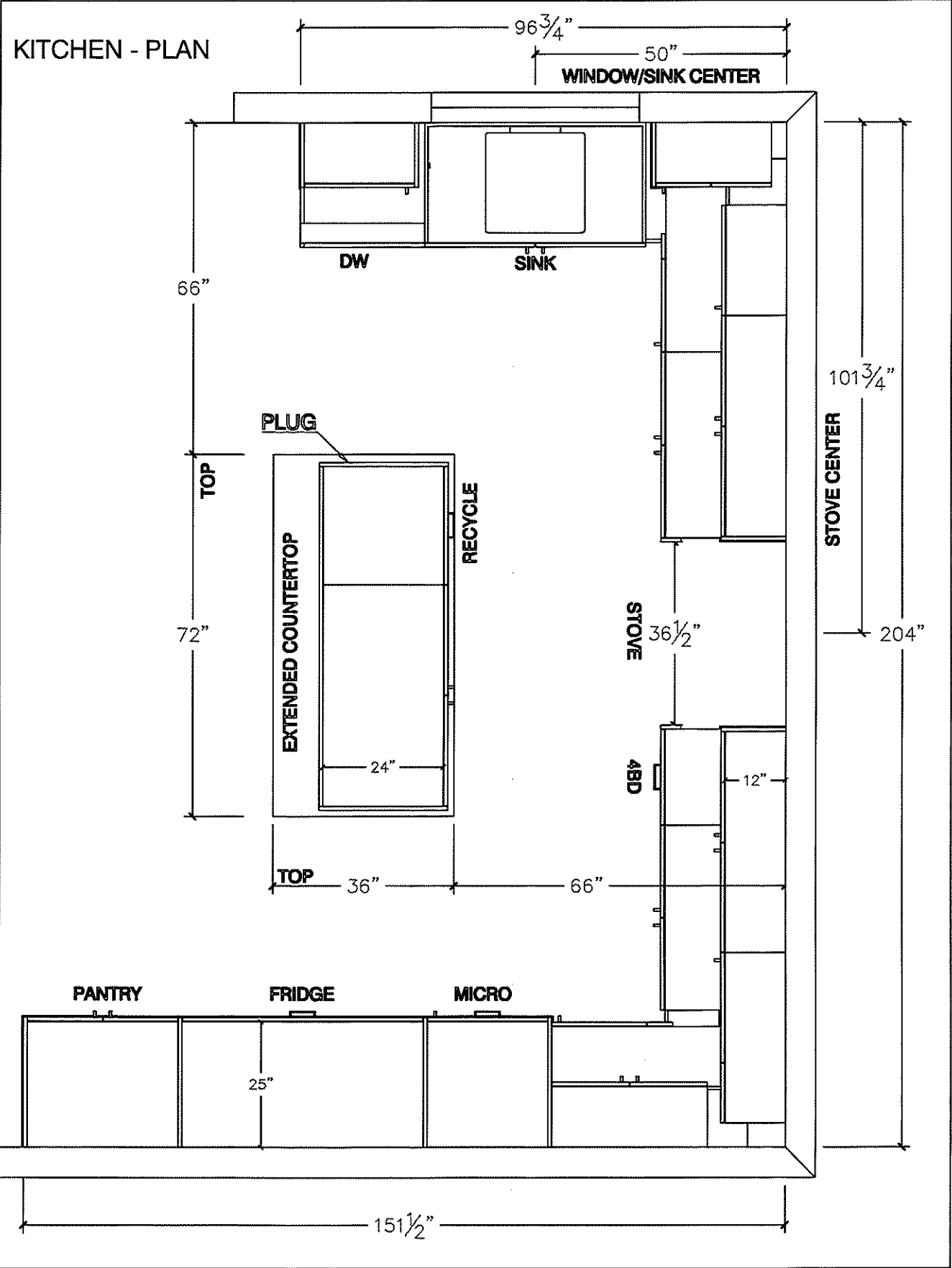
SALES REP NAME: _____ - apD QTK AUTHORIZED SIGNATURE: _____



80 Sante Drive, Vaughan, ON L4K 3C4
T 416.746.1811 F 905.761.5901
www.QTK.ca info@qtk.ca

CLIENT: ROYAL PINE HOMES	JOB NAME: LOT 41 WRV	ROOM: KITCHEN	DRAWN BY: AA
SITE: WEST RIVER VALLEY	DOOR STYLE: __	DOOR HANDLE: __	SCALE: 1/2" = 1'-0"
PHONE: __	FINISH: __	DRW HANDLE: __	DATE: JULY 28 2022
EMAIL: __	SPECIES: __	TOP: __	PAGE:
COMMENTS:			

Customer Agrees and Accepts the following conditions: 1. The Drawing is a representation only and the installed cabinetry may vary slightly in product size, measurements, handle appearance and location and other details. Although Quality Tops & Kitchens Ltd. (QTK) does it's best to manufacture exactly what is shown here outside factors may prevent that and some variance is to be expected and accepted by the customer. 2. These drawings represent the intellectual property of QTK and as such the customer understands and accepts that all deposits given by the customer to QTK are non-refundable after QTK has supplied drawings (either physically or electronically) to the customer. If the customer decides to cancel the order after QTK has submitted drawings to the customer, the deposit will then be considered a design fee and no money will be returned to the customer.



Signature

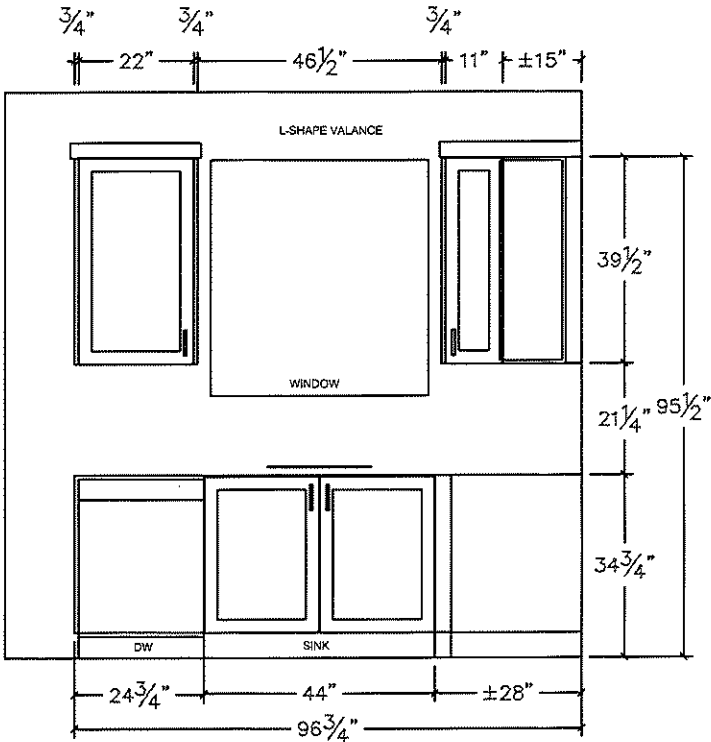


80 Sante Drive, Vaughan, ON L4K 3C4
T 416.746.1811 F 905.761.5901
www.QTK.ca info@qtk.ca

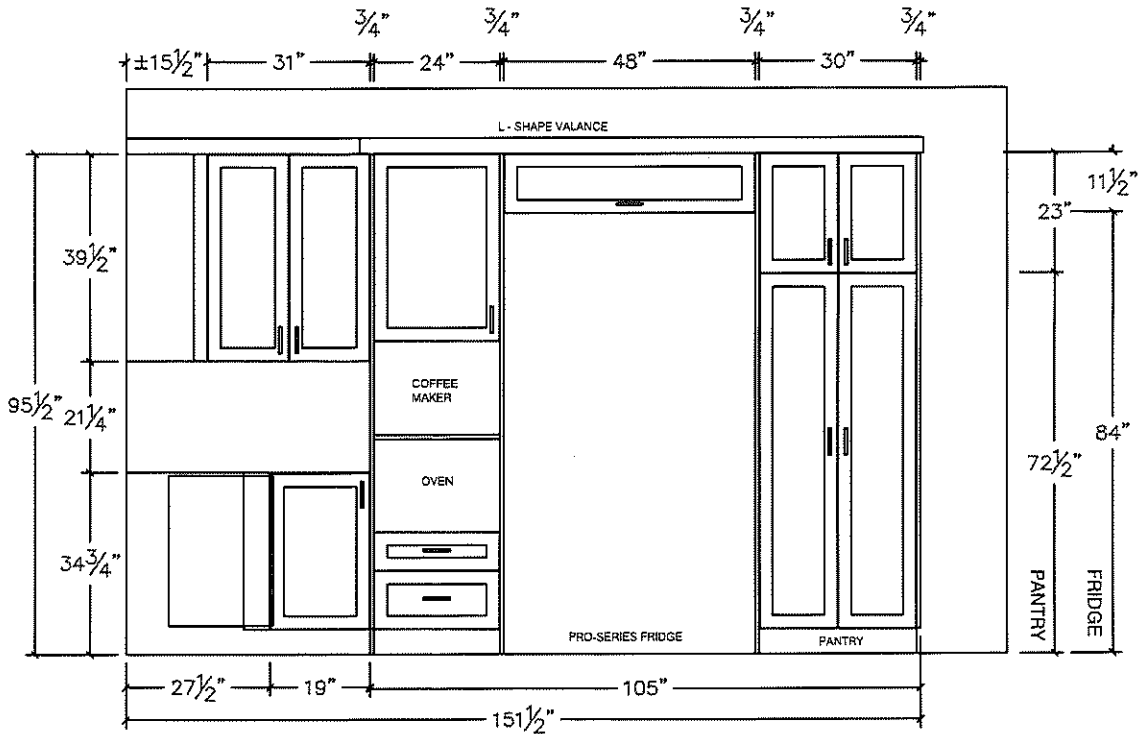
CLIENT: ROYAL PINE HOMES	JOB NAME: LOT 41 WRV	ROOM: KITCHEN	DRAWN BY: AA
SITE: WEST RIVER VALLEY	DOOR STYLE: —	DOOR HANDLE: —	SCALE: 1/2" = 1'-0"
PHONE: —	FINISH: —	DRW HANDLE: —	DATE: JULY 28 2022
EMAIL: —	SPECIES: —	TOP: —	PAGE:
COMMENTS:			

Customer Agrees and Accepts the following conditions: 1. The Drawing is a representation only and the installed cabinetry may vary slightly in product size, measurements, handle appearance and location and other details. Although Quality Tops & Kitchens Ltd. (QTK) does it's best to manufacture exactly what is shown here outside factors may prevent that and some variance is to be expected and accepted by the customer. 2. These drawings represent the intellectual property of QTK and as such the customer understands and accepts that all deposits given by the customer to QTK are non-refundable after QTK has supplied drawings (either physically or electronically) to the customer. If the customer decides to cancel the order after QTK has submitted drawings to the customer, the deposit will then be considered a design fee and no money will be returned to the customer.

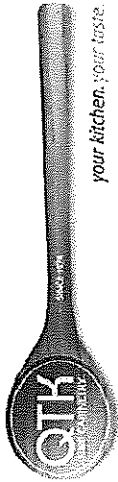
SINK WALL - ELEVATION



FRIDGE WALL - ELEVATION



[Handwritten signature]

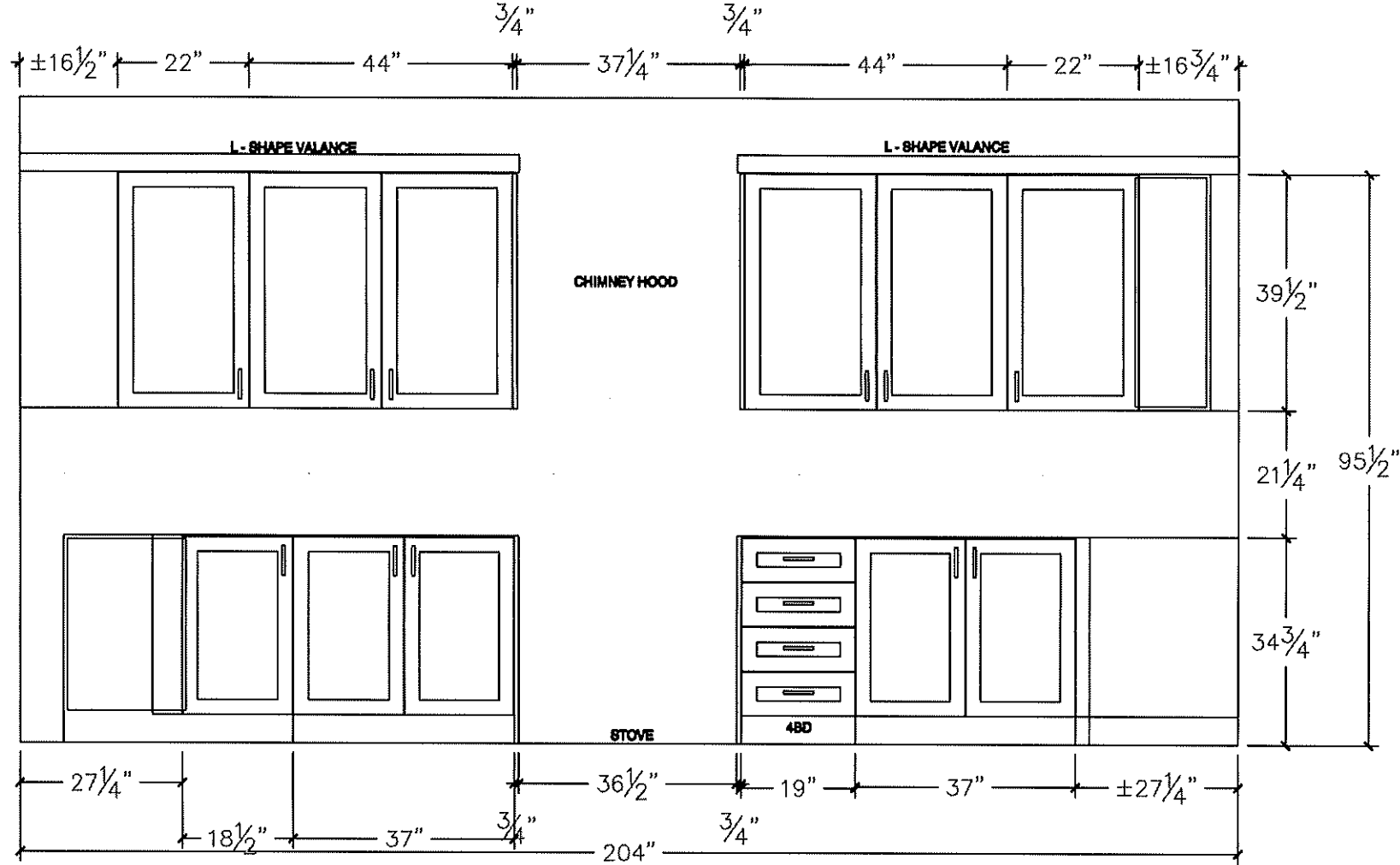


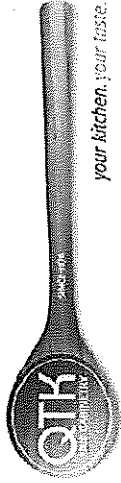
80 Sante Drive, Vaughan, ON L4K 3C4
T 416.746.1811 F 905.761.5901
www.QTK.ca info@qtk.ca

CLIENT: ROYAL PINE HOMES	JOB NAME: LOT 41 WRV	ROOM: KITCHEN	DRAWN BY: AA
SITE: WEST RIVER VALLEY	DOOR STYLE: —	DOOR HANDLE: —	SCALE: 1/2" = 1'-0"
PHONE: —	FINISH: —	DRW HANDLE: —	DATE: JULY 28 2022
EMAIL: —	SPECIES: —	TOP: —	PAGE:
COMMENTS:			

Customer Agrees and Accepts the following conditions: 1. The Drawing is a representation only and the installed cabinetry may vary slightly in product size, measurements, handle appearance and location and other details. Although Quality Tops & Kitchens Ltd. (QTK) does it's best to manufacture exactly what is shown here outside factors may prevent that and some variance is to be expected and accepted by the customer. 2. These drawings represent the intellectual property of QTK and as such the customer understands and accepts that all deposits given by the customer to QTK are non-refundable after QTK has supplied drawings (either physically or electronically) to the customer. If the customer decides to cancel the order after QTK has submitted drawings to the customer, the deposit will then be considered a design fee and no money will be returned to the customer.

STOVE WALL - ELEVATION





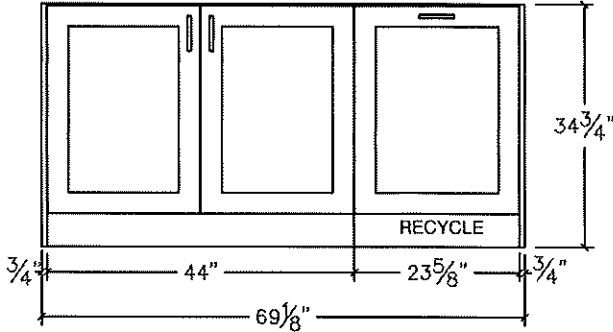
80 Sante Drive, Vaughan, ON L4K 3C4
T 416.746.1811 F 905.761.5901
www.QTK.ca info@qtk.ca

CLIENT: ROYAL PINE HOMES	JOB NAME: LOT 41 WRV	ROOM: KITCHEN	DRAWN BY: AA
SITE: WEST RIVER VALLEY	DOOR STYLE: —	DOOR HANDLE: —	SCALE: 1/2" = 1'-0"
PHONE: —	FINISH: —	DRW HANDLE: —	DATE: JULY 28 2022
EMAIL: —	SPECIES: —	TOP: —	PAGE:

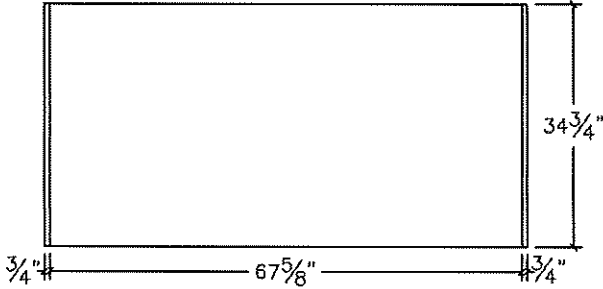
COMMENTS:

Customer Agrees and Accepts the following conditions: 1. The Drawing is a representation only and the installed cabinetry may vary slightly in product size, measurements, handle appearance and location and other details. Although Quality Tops & Kitchens Ltd. (QTK) does it's best to manufacture exactly what is shown here outside factors may prevent that and some variance is to be expected and accepted by the customer. 2. These drawings represent the intellectual property of QTK and as such the customer understands and accepts that all deposits given by the customer to QTK are non-refundable after QTK has supplied drawings (either physically or electronically) to the customer. If the customer decides to cancel the order after QTK has submitted drawings to the customer, the deposit will then be considered a design fee and no money will be returned to the customer.

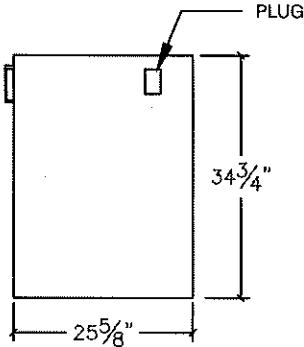
ISLAND FRONT - ELEVATION

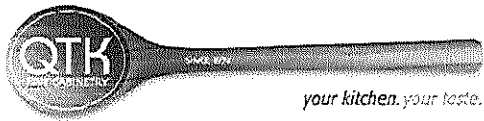


ISLAND REAR - ELEVATION



ISLAND SIDE - ELEVATION

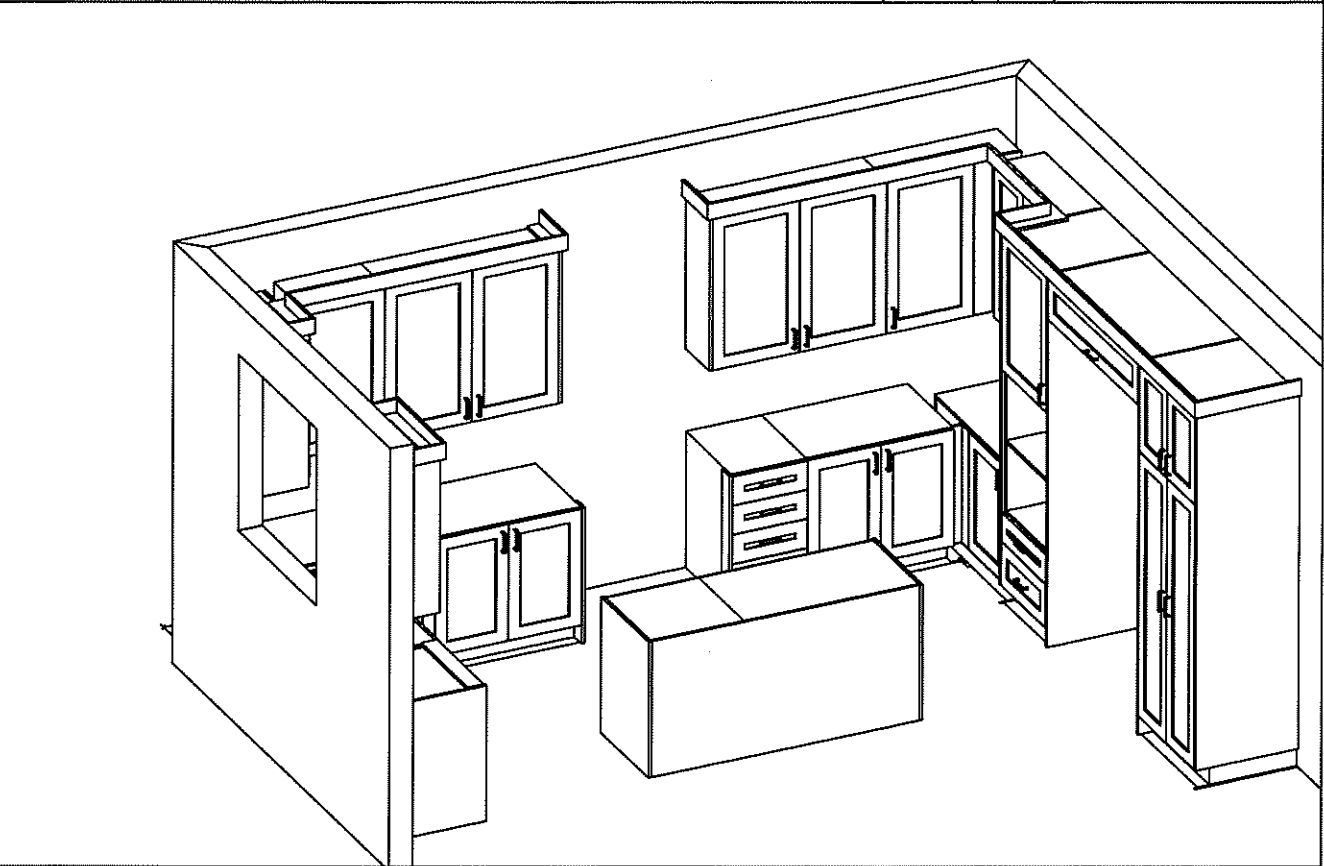
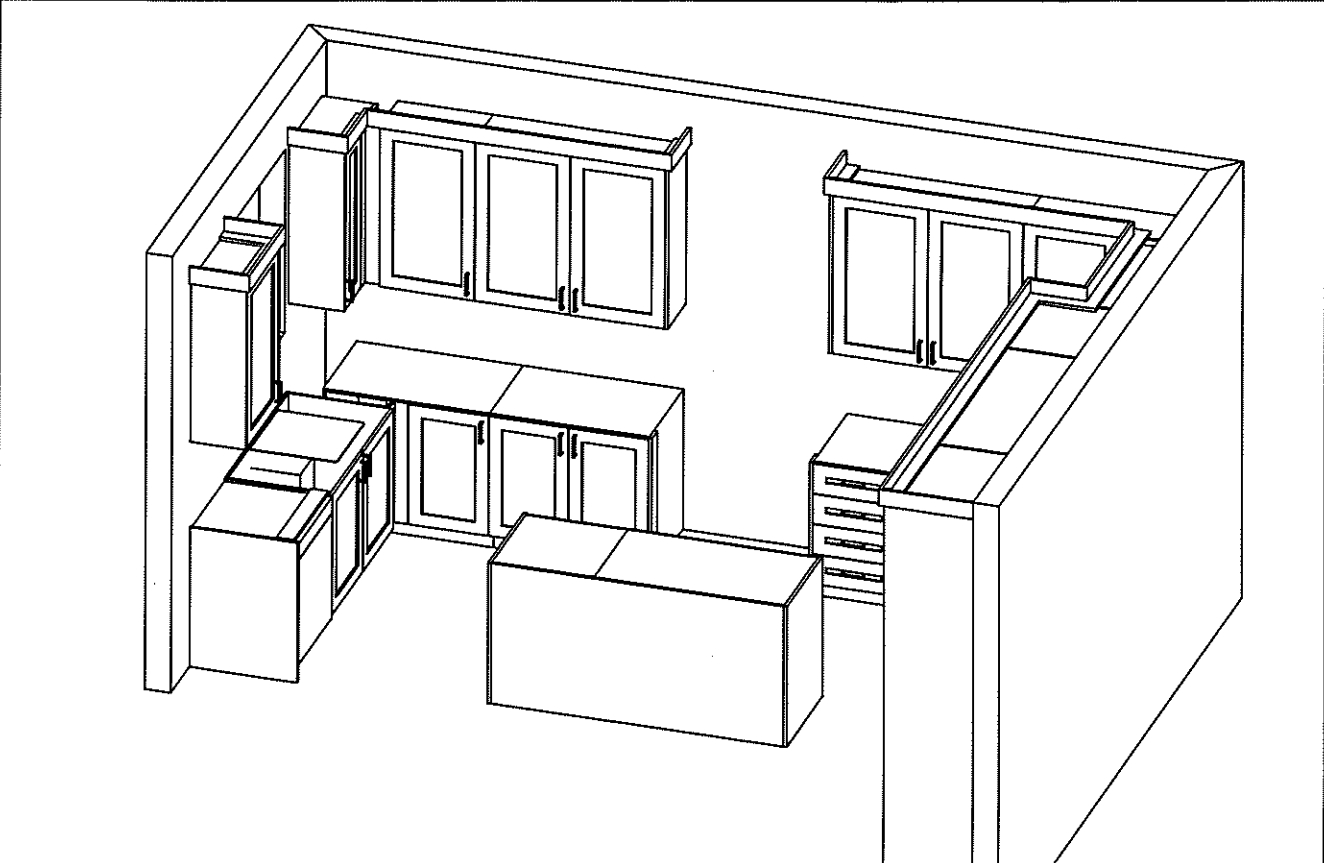




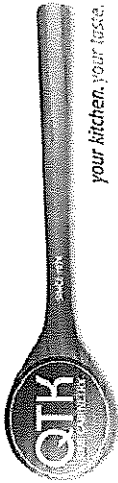
80 Sante Drive, Vaughan, ON L4K 3C4
T 416.746.1811 F 905.761.5901
www.QTK.ca info@qtk.ca

CLIENT: ROYAL PINE HOMES	JOB NAME: LOT 41 WRV	ROOM: KITCHEN	DRAWN BY: AA
SITE: WEST RIVER VALLEY	DOOR STYLE: __	DOOR HANDLE: __	SCALE: 1/2" = 1'-0"
PHONE: __	FINISH: __	DRW HANDLE: __	DATE: JULY 28 2022
EMAIL: __	SPECIES: __	TOP: __	PAGE:
COMMENTS:			

Customer Agrees and Accepts the following conditions: 1. The Drawing is a representation only and the installed cabinetry may vary slightly in product size, measurements, handle appearance and location and other details. Although Quality Tops & Kitchens Ltd. (QTK) does it's best to manufacture exactly what is shown here outside factors may prevent that and some variance is to be expected and accepted by the customer. 2. These drawings represent the intellectual property of QTK and as such the customer understands and accepts that all deposits given by the customer to QTK are non-refundable after QTK has supplied drawings (either physically or electronically) to the customer. If the customer decides to cancel the order after QTK has submitted drawings to the customer, the deposit will then be considered a design fee and no money will be returned to the customer.



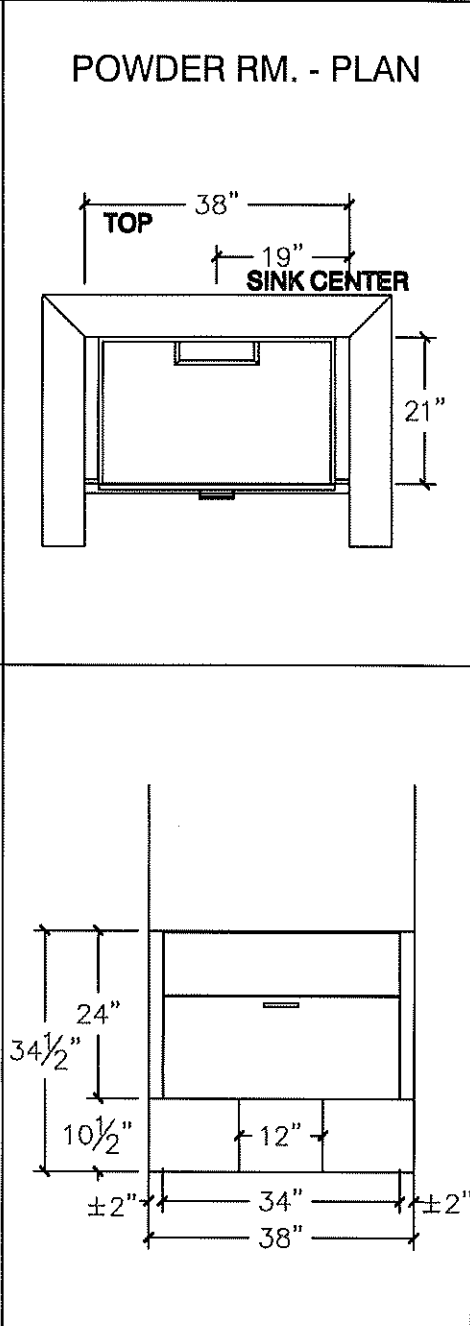
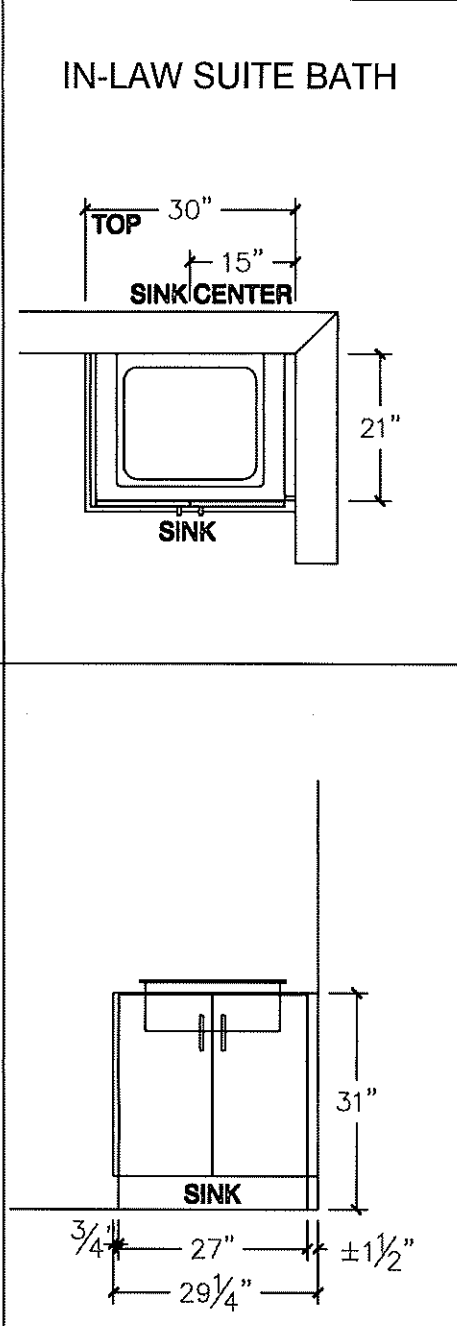
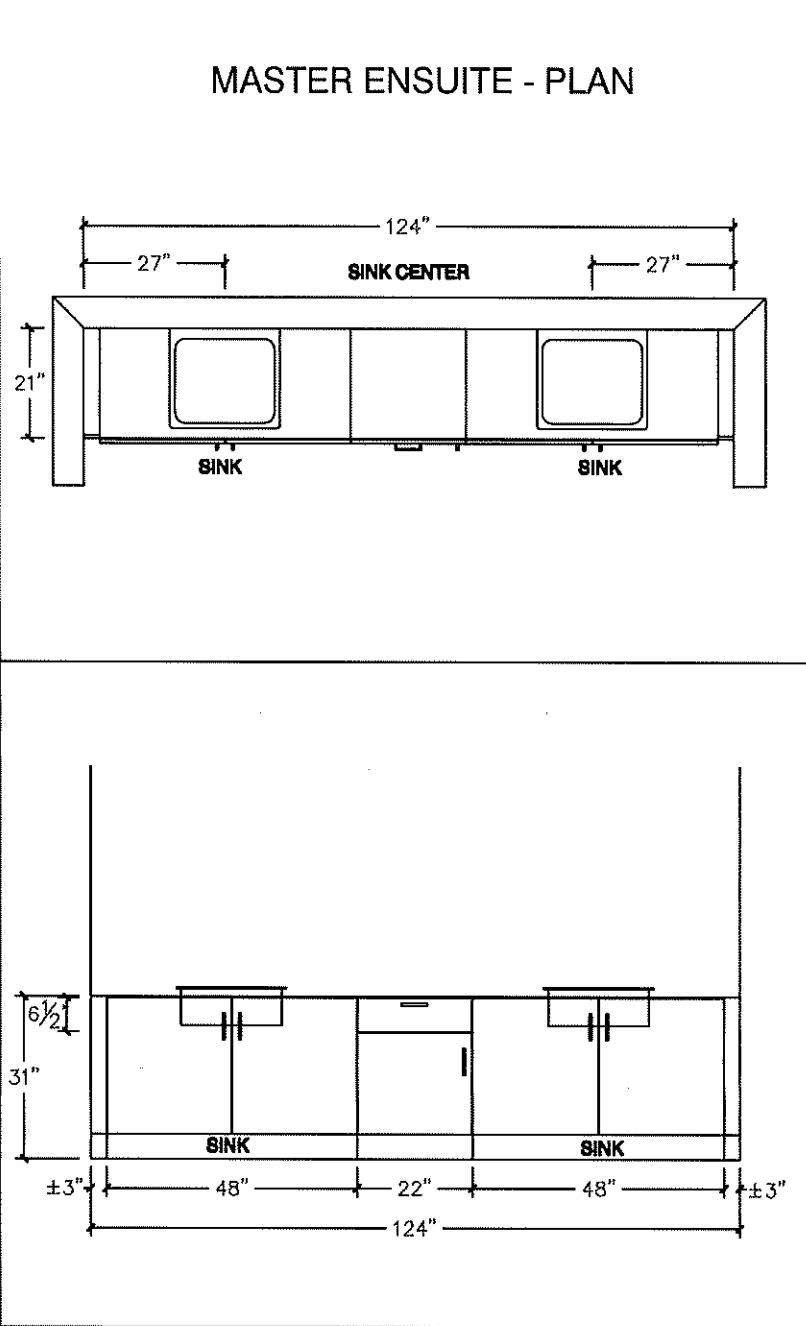
[Handwritten signature]



80 Sante Drive, Vaughan, ON L4K 3C4
T 416.746.1811 F 905.761.5901
www.QTK.ca info@qtk.ca

CLIENT: ROYAL PINE HOMES	JOB NAME: LOT 41 WRV	ROOM: VANITY	DRAWN BY: AA
SITE: WEST RIVER VALLEY	DOOR STYLE: —	DOOR HANDLE: —	SCALE: 1/2" = 1'-0"
PHONE: —	FINISH: —	DRW HANDLE: —	DATE: JULY 28 2022
EMAIL: —	SPECIES: —	TOP: —	PAGE:
COMMENTS:			

Customer Agrees and Accepts the following conditions: 1. The Drawing is a representation only and the installed cabinetry may vary slightly in product size, measurements, handle appearance and location and other details. Although Quality Tops & Kitchens Ltd. (QTK) does it's best to manufacture exactly what is shown here outside factors may prevent that and some variance is to be expected and accepted by the customer. 2. These drawings represent the intellectual property of QTK and as such the customer understands and accepts that all deposits given by the customer to QTK are non-refundable after QTK has supplied drawings (either physically or electronically) to the customer. If the customer decides to cancel the order after QTK has submitted drawings to the customer, the deposit will then be considered a design fee and no money will be returned to the customer.



[Handwritten signature]

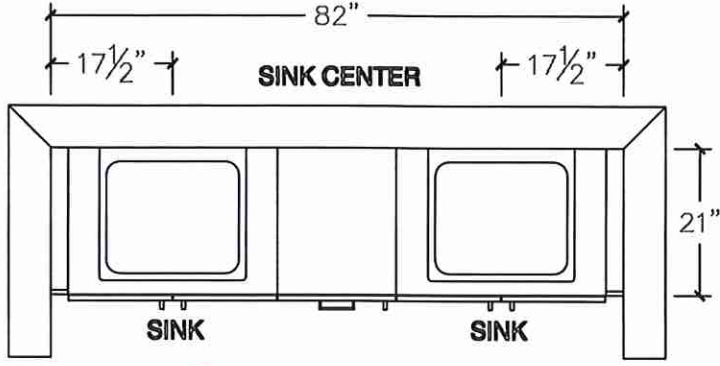
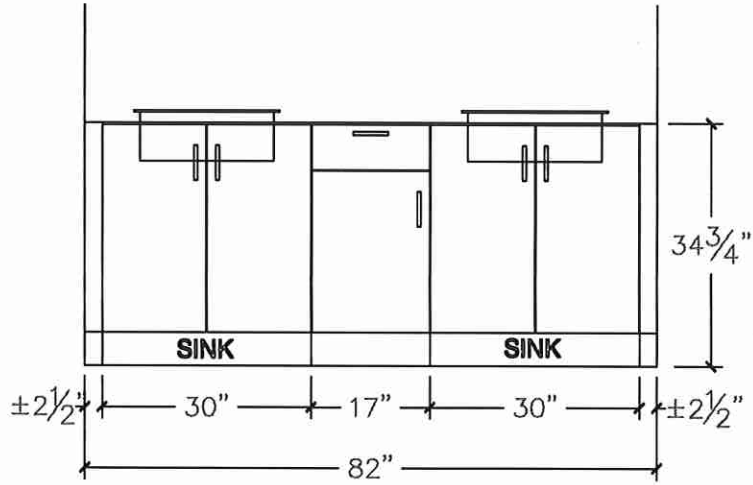
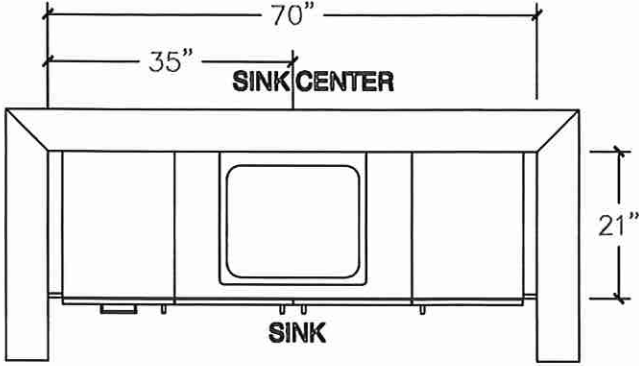
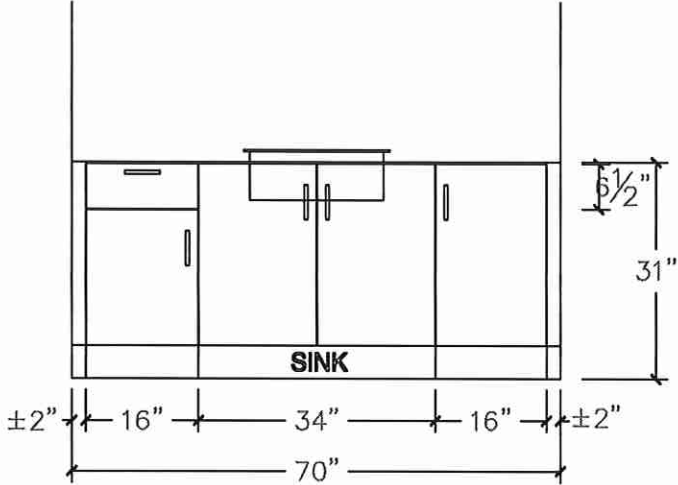


80 Sante Drive, Vaughan, ON L4K 3C4
T 416.746.1811 F 905.761.5901
www.QTK.ca info@qtk.ca

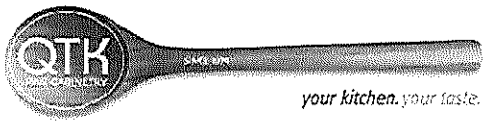
CLIENT: ROYAL PINE HOMES	JOB NAME: LOT 41 WRV	ROOM: VANITY	DRAWN BY: AA
SITE: WEST RIVER VALLEY	DOOR STYLE: —	DOOR HANDLE: —	SCALE: 1/2" = 1'-0"
PHONE: —	FINISH: —	DRW HANDLE: —	DATE: JULY 28 2022
EMAIL: —	SPECIES: —	TOP: —	PAGE: —

COMMENTS:

Customer Agrees and Accepts the following conditions: 1. The Drawing is a representation only and the installed cabinetry may vary slightly in product size, measurements, handle appearance and location and other details. Although Quality Tops & Kitchens Ltd. (QTK) does it's best to manufacture exactly what is shown here outside factors may prevent that and some variance is to be expected and accepted by the customer. 2. These drawings represent the intellectual property of QTK and as such the customer understands and accepts that all deposits given by the customer to QTK are non-refundable after QTK has supplied drawings (either physically or electronically) to the customer. If the customer decides to cancel the order after QTK has submitted drawings to the customer, the deposit will then be considered a design fee and no money will be returned to the customer.



RAISED HEIGHT

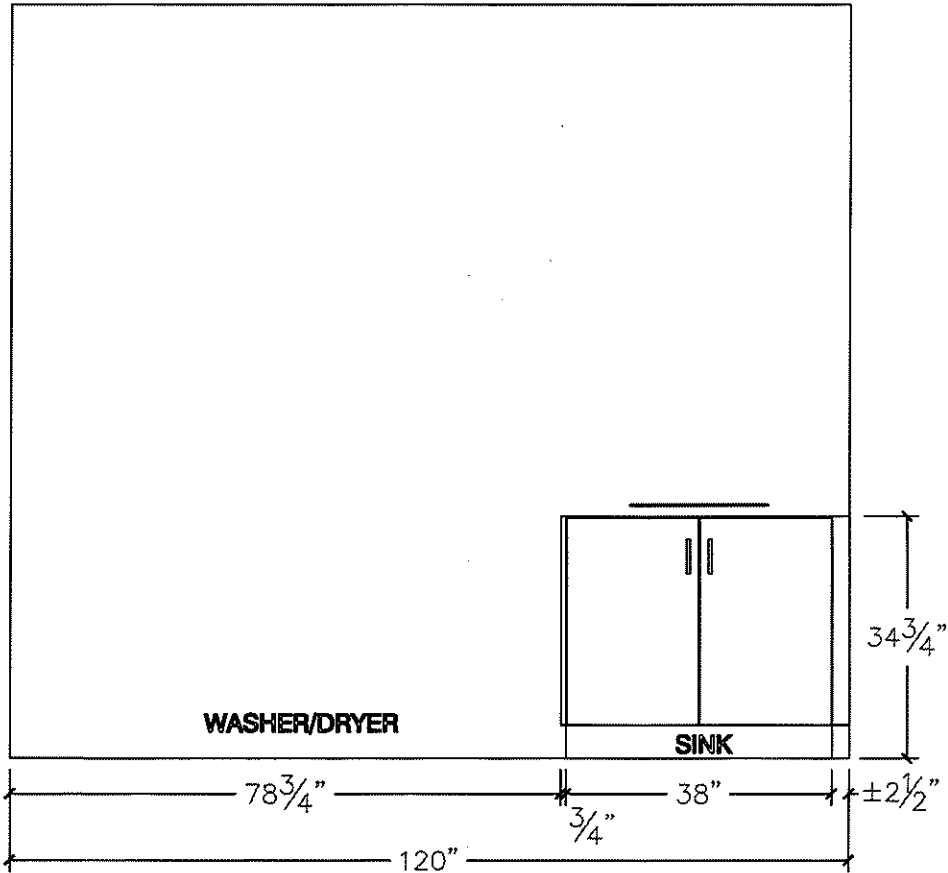
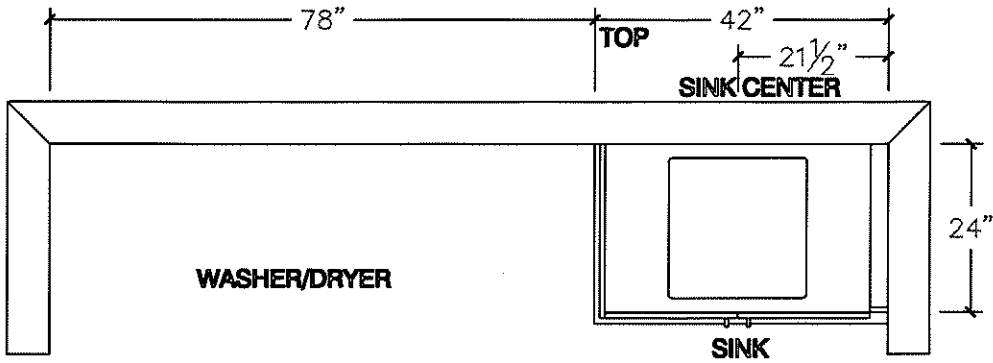


80 Sante Drive, Vaughan, ON L4K 3C4
T 416.746.1811 F 905.761.5901
www.QTK.ca info@qtk.ca

CLIENT: ROYAL PINE HOMES	JOB NAME: LOT 41 WRV	ROOM: LAUNDRY	DRAWN BY: AA
SITE: WEST RIVER VALLEY	DOOR STYLE: ____	DOOR HANDLE: ____	SCALE: 1/2" = 1'-0"
PHONE: ____	FINISH: ____	DRW HANDLE: ____	DATE: JULY 28 2022
EMAIL: ____	SPECIES: ____	TOP: ____	PAGE:
COMMENTS:			

Customer Agrees and Accepts the following conditions: 1. The Drawing is a representation only and the installed cabinetry may vary slightly in product size, measurements, handle appearance and location and other details. Although Quality Tops & Kitchens Ltd. (QTK) does it's best to manufacture exactly what is shown here outside factors may prevent that and some variance is to be expected and accepted by the customer. 2. These drawings represent the intellectual property of QTK and as such the customer understands and accepts that all deposits given by the customer to QTK are non-refundable after QTK has supplied drawings (either physically or electronically) to the customer. If the customer decides to cancel the order after QTK has submitted drawings to the customer, the deposit will then be considered a design fee and no money will be returned to the customer.

OPT LAUNDRY (FIRST FLOOR) - PLAN



[Handwritten signature]