



UNITED ENGINEERING INC
Mechanical and Electrical Consulting Engineers

3645 Keele St. #105
Toronto, ON, M3J 1M6
Email: info@u-eng.ca
T: (416) 398-1999
F: (416) 398-1933

SITE SUPPLEMENTAL INSTRUCTION

PROJECT: Forestside Estates
Attmar & Paleschi Drive
Brampton, ON

PROJECT NO.: 18-017

CONTRACT: Mechanical

DATE: April 17, 2023

SITE SI NO. M-13

THIS SITE SUPPLEMENTAL INSTRUCTION IS NOT TO BE CONSTRUED AS A CHANGE IN THE CONTRACT PRICE, BUT IS ISSUED FOR CLARIFICATION ONLY. IF A CHANGE IN CONTRACT PRICE IS PERCEIVED, PROVIDE AN ITEMIZED BREAKDOWN OF ANY EXTRAS OR CREDITS WITHIN SEVEN (7) WORKING DAYS.

PURPOSE: To add electrical baseboard heater for building C suite 239.

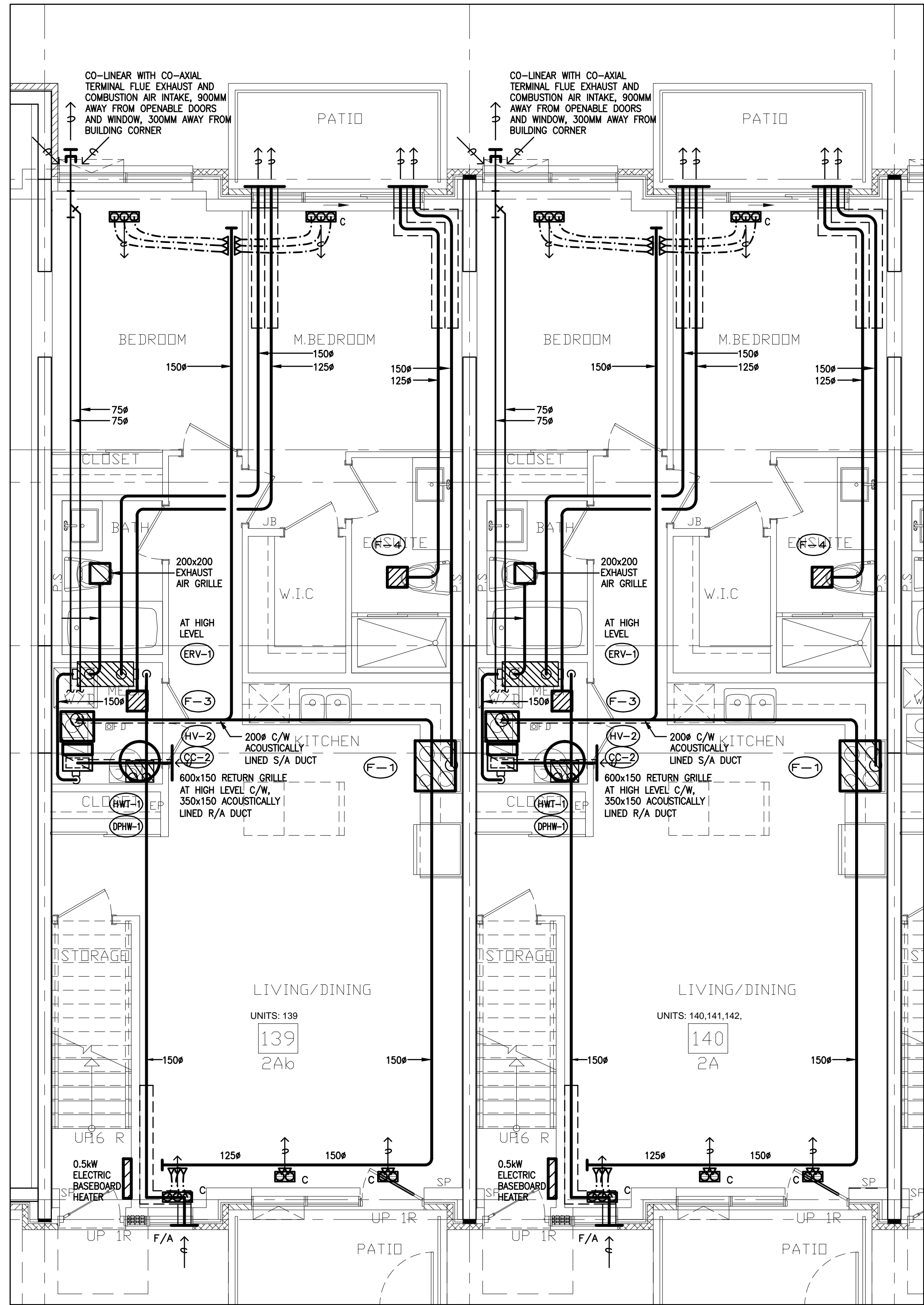
1.0 Reference Drawing M-45 (Typical suite layout Mechanical) Issued

1.1 Added: 0.5KW electrical baseboard heater for Typical Suite 2A4.

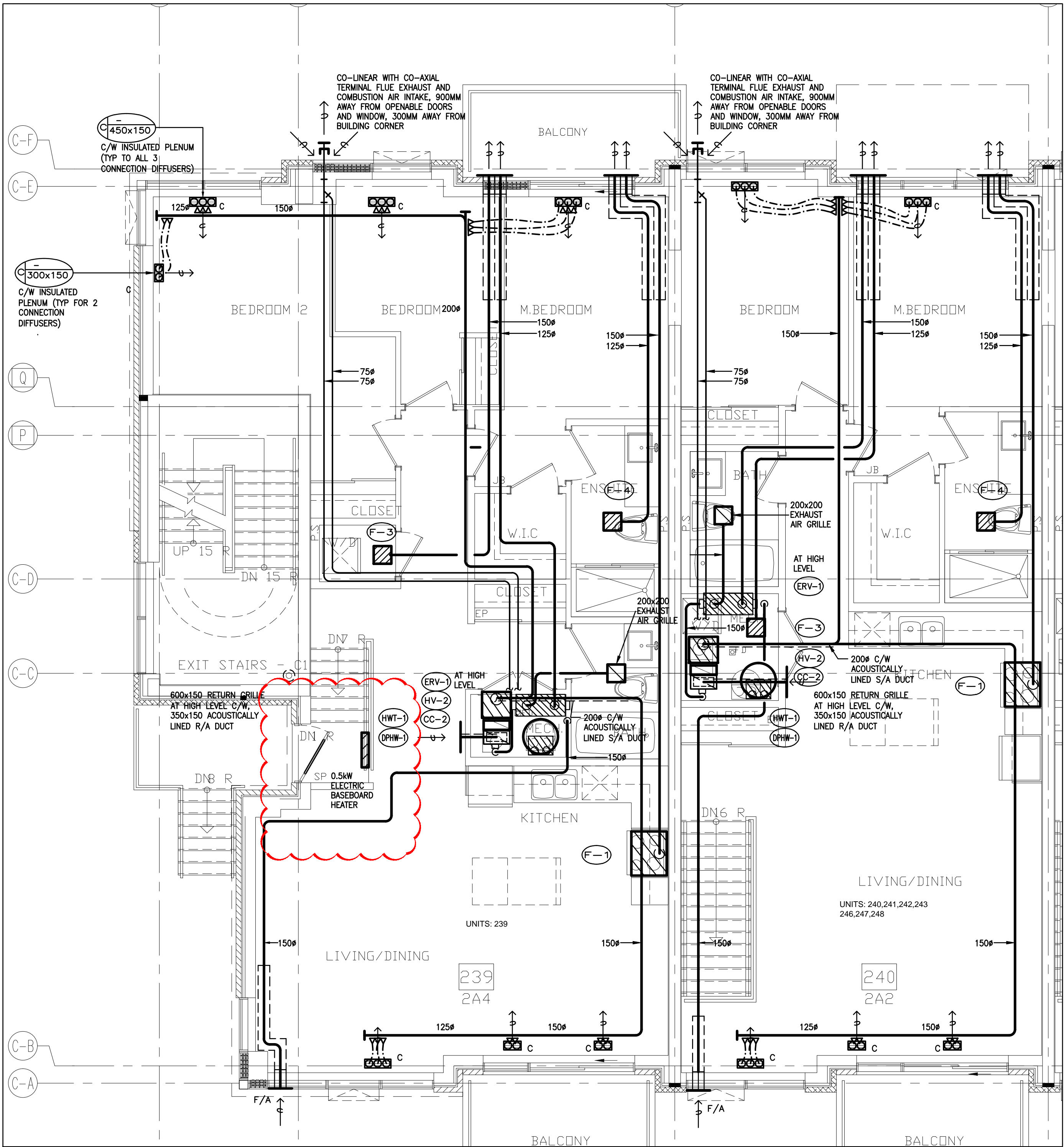
PREPARED BY: _____

Leon Bai
Mechanical Department

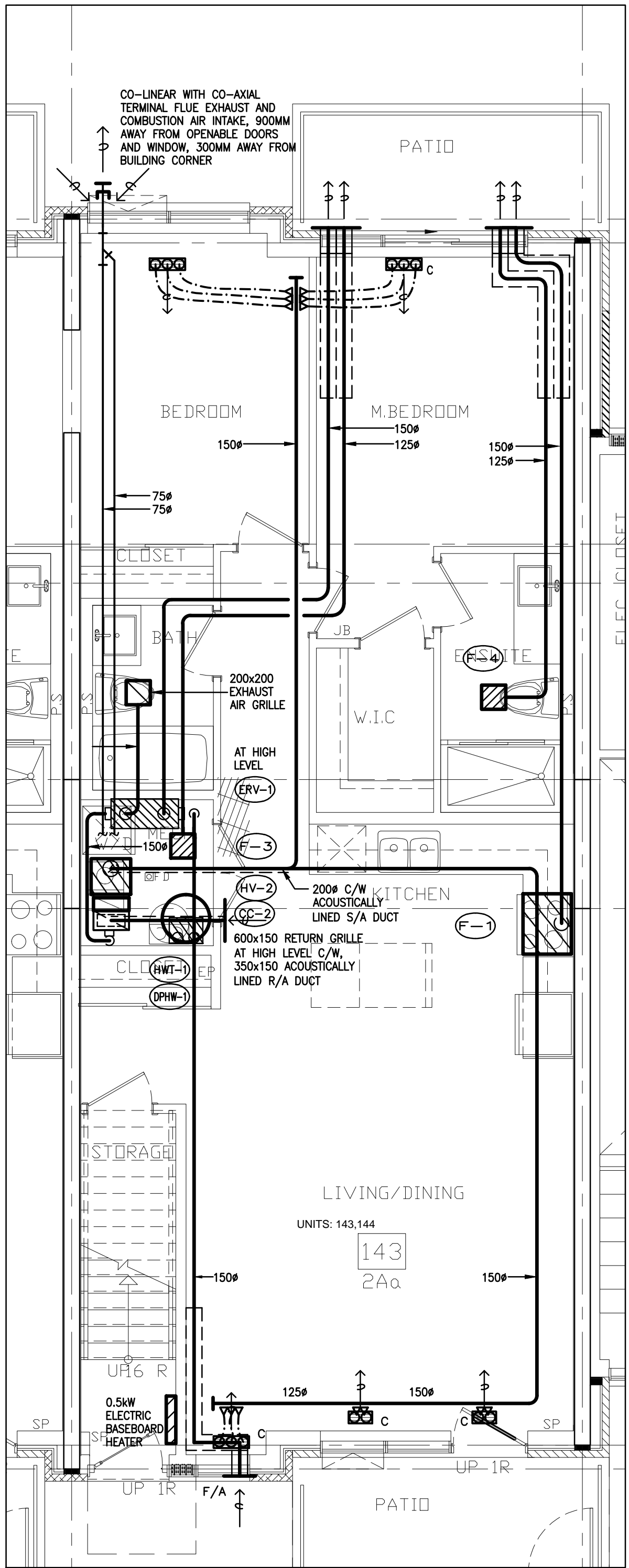
ISSUED TO ROYAL PINE HOMES,
Cinzia Caruso, Cinzia@royalpinehomes.com;
Vince Staffieri, vince@royalpinehomes.com
FOR DISTRIBUTION TO ALL AFFECTED PARTIES.



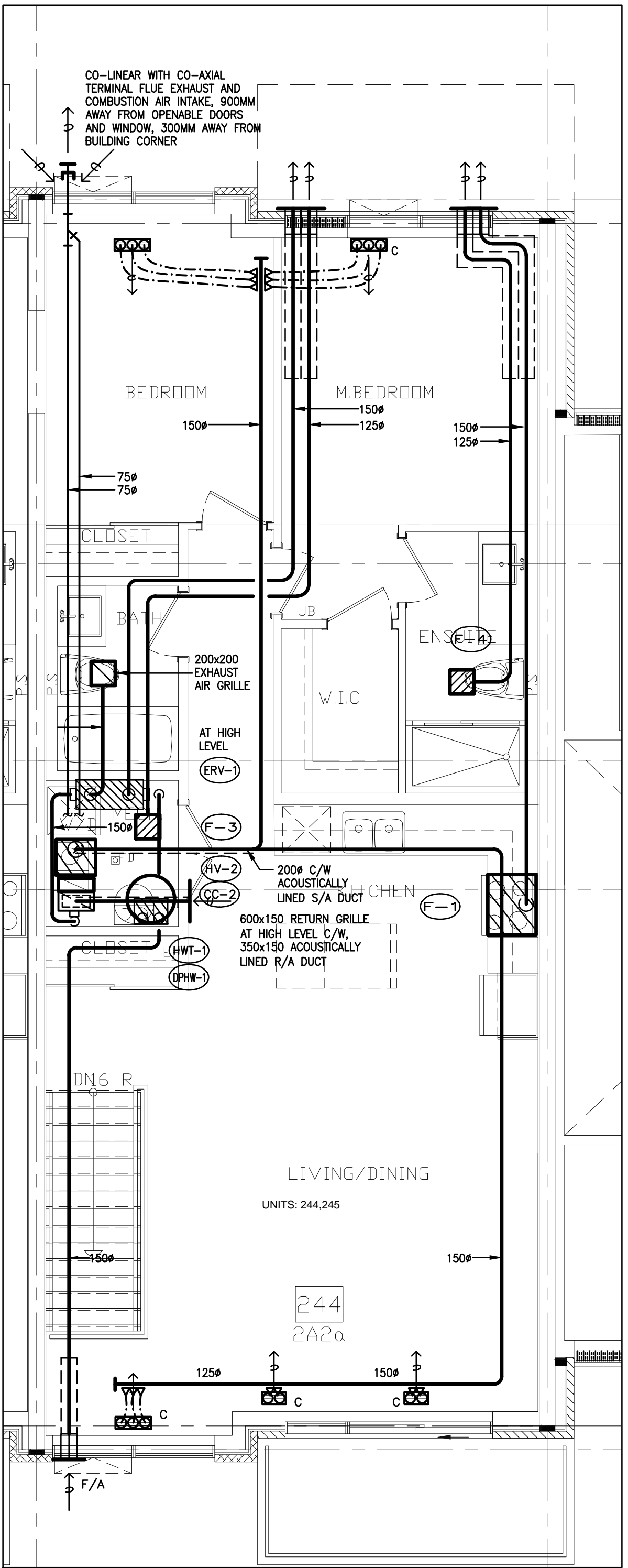
GROUND FLOOR TYPICAL SUITE LAYOUT TYPE 2Ab & 2A



SECOND FLOOR TYPICAL SUITE LAYOUT TYPE 2A4 & 2A2



GROUND FLOOR TYPICAL SUITE LAYOUT TYPE 2Aa

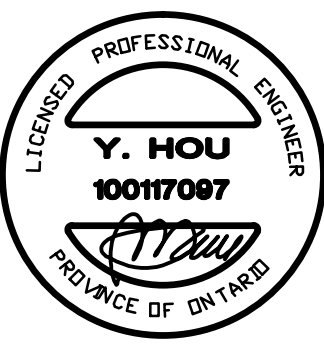


SECOND FLOOR TYPICAL SUITE LAYOUT TYPE 2A2a

NO.	BY	DESCRIPTION	DATE
13	LB	ISSUED AS PER SITE INSTRUCTION M-13	APR. 17, 2023
12	LB	ISSUED FOR CONSTRUCTION	AUG. 05, 2022
11	LB	ISSUED AS PER SITE INSTRUCTION M-05	OCT. 26, 2021
10	LB	RE-ISSUED AS PER SI A10 FOR PERMIT	OCT. 15, 2021
09	LB	ISSUED FOR PERMIT REVISION TO BLD D	SEP. 27, 2021
08	LB	ISSUED FOR PROGRESSIVE CONSTRUCTION	JUN. 15, 2021
07	LB	ISSUED AS PER SITE INSTRUCTION M-02	JUN. 04, 2021
06	LB	ISSUED FOR PROGRESSIVE CONSTRUCTION	MAR. 26, 2021
05	LB	ISSUED FOR PERMIT BUILDING A,B,C,D	MAR. 03, 2021
04	LB	ISSUED AS PER ADD M-05	JAN. 20, 2021
03	LB	ISSUED FOR PERMIT	SEP. 28, 2020
02	RC	ADDENDUM #04	JUN. 12, 2020
01	RC	ISSUED FOR TENDER	AUG. 02, 2019

REVISIONS

This drawing is an instrument of service, is provided by and is the property of United Engineering Inc. The contractor must verify and accept responsibility for all dimensions and conditions on site and must notify United Engineering Inc. of any discrepancy before proceeding. United Engineering Inc. is not responsible for the accuracy of Architectural, structural, interior design, etc. on this drawing. Refer to the appropriate trade drawings before proceeding with any work. Installation must conform to all applicable codes and requirements of the authorities having jurisdiction. This drawing is not to be scaled, all symbols are graphic representations only.



UNITED ENGINEERING INC.
Mechanical Electrical Consulting Engineers
3645 Keele Street, Suite 105,
Toronto, Ontario, M3J 1M6
Tel: (416) 398 1599, Fax: (416) 398 1933

TITLE
**TYPICAL SUITES LAYOUT
MECHANICAL**

PROJECT
**BRAMPTON STACKED
FORESTSIDE ESTATES**

ATTMAY + PALLESCHI DRIVE
BRAMPTON, ONTARIO

DRAWN	CHECKED	SCALE
MC	LM	1:50
DATE	PROJECT	DRAWING
MAY, 2019	18-017	M-45
		OF