



FROM PLAN DATED:

**BUILDER:** ROYAL PINE HOMES

**SITE:** CENTREFIELD WEST GORMLEY

**MODEL:** 2009

**ELEVATION:** A,B

**LOT:**

**CITY:** RICHMOND HILL

**SALESMAN:** MARIO DICIANO  
**DESIGNER:** AJ  
**REVISION:**

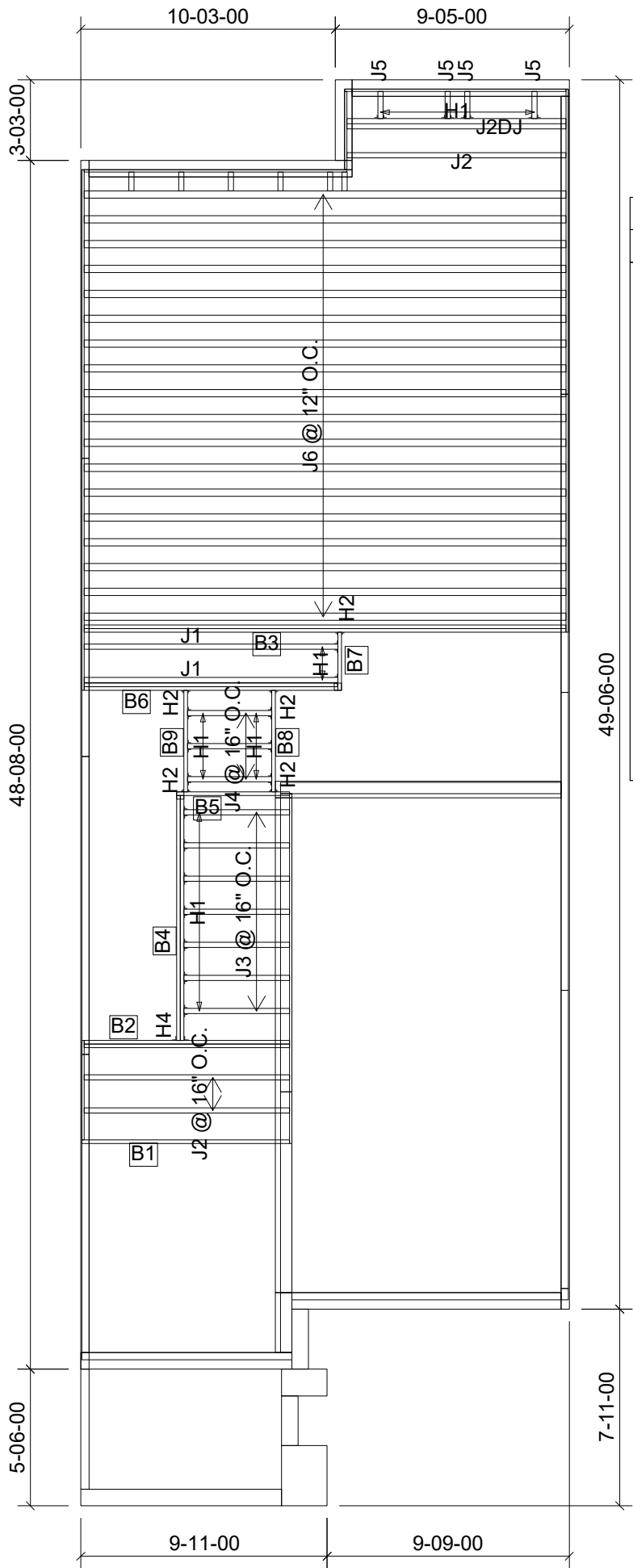
**NOTES:**  
REFER TO THE **NORDIC INSTALLATION** GUIDE FOR PROPER STORAGE AND INSTALLATION.  
**SQUASH BLOCKS** OF 2x4, 2x6, 2x8 #2 S.P.F REQ'D UNDER INTERIOR UNIFORM LOAD BEARING WALLS. **MULTIPLE SQUASH BLOCKS** REQ'D UNDER CONCENTRATED LOADS. SEE FIGURE 1. **CANTILEVERED JOISTS** INCLUDING **CANT' OVER BRICK** REQ. I-JOIST BLOCKING ALONG BEARING AND RIMBOARD CLOSURE AT ENDS. SEE FIGURES 4 & 5 FOR REINFORCEMENT REQUIREMENTS. FOR **HOLES** INCLUDING **DUCT CHASE** AND **FIELD CUT OPENINGS** SEE FIGURE 7, TABLES 1 & 2. **CERAMIC TILE** APPLICATION AS PER O.B.C 9.30.6.

**LOADING:**  
DESIGN LOADS: L/480.000  
LIVE LOAD: 40.0 lb/ft²  
DEAD LOAD: 20.0 lb/ft²

**SUBFLOOR:** 3/4" GLUED AND NAILED

**DATE:** 2020-07-22

1st FLOOR



Products				
PlotID	Length	Product	Plies	Net Qty
J1	12-00-00	11 7/8" NI-40x	1	2
J2	10-00-00	11 7/8" NI-40x	1	3
J2DJ	10-00-00	11 7/8" NI-40x	2	2
J3	6-00-00	11 7/8" NI-40x	1	7
J4	4-00-00	11 7/8" NI-40x	1	3
J5	2-00-00	11 7/8" NI-40x	1	4
J6	20-00-00	11 7/8" NI-80	1	18
B3	20-00-00	1-3/4" x 11-7/8" VERSA-LAM® 2.0 3100 SP	2	2
B6	12-00-00	1-3/4" x 11-7/8" VERSA-LAM® 2.0 3100 SP	2	2
B1	10-00-00	1-3/4" x 11-7/8" VERSA-LAM® 2.0 3100 SP	1	1
B2	10-00-00	1-3/4" x 11-7/8" VERSA-LAM® 2.0 3100 SP	2	2
B4	10-00-00	1-3/4" x 11-7/8" VERSA-LAM® 2.0 3100 SP	2	2
B5	6-00-00	1-3/4" x 11-7/8" VERSA-LAM® 2.0 3100 SP	1	1
B8	6-00-00	1-3/4" x 11-7/8" VERSA-LAM® 2.0 3100 SP	1	1
B9	6-00-00	1-3/4" x 11-7/8" VERSA-LAM® 2.0 3100 SP	1	1
B7	4-00-00	1-3/4" x 11-7/8" VERSA-LAM® 2.0 3100 SP	1	1

Connector Summary		
Qty	Manuf	Product
8	H1	IUS2.56/11.88
7	H1	IUS2.56/11.88
4	H1	IUS2.56/11.88
2	H2	HUS1.81/10
3	H2	HUS1.81/10
1	H4	HGUS410



FROM PLAN DATED:

BUILDER: ROYAL PINE HOMES

SITE: CENTREFIELD WEST GORMLEY

MODEL: 2009

ELEVATION: A,B

LOT:

CITY: RICHMOND HILL

SALESMAN: MARIO DICIANO

DESIGNER: AJ

REVISION:

NOTES:

REFER TO THE NORDIC **INSTALLATION GUIDE** FOR PROPER STORAGE AND INSTALLATION. **SQUASH BLOCKS** OF 2x4, 2x6, 2x8 #2 S.P.F. REQ'D UNDER INTERIOR UNIFORM LOAD BEARING WALLS. **MULTIPLE SQUASH BLOCKS** REQ'D UNDER CONCENTRATED LOADS. SEE FIGURE 1. **CANTILEVERED JOISTS** INCLUDING **CANT' OVER BRICK** REQ. I-JOIST BLOCKING ALONG BEARING AND RIMBOARD CLOSURE AT ENDS. SEE FIGURE 7 TABLES 4 & 5 FOR REINFORCEMENT REQUIREMENTS. FOR **HOLES** INCLUDING **DUCT CHASE** AND **FIELD CUT OPENINGS** SEE FIGURE 7 TABLES 1 & 2 OF THE INSTALLATION GUIDE. **CERAMIC TILE** APPLICATION AS PER O.B.C. 9.30.6

LOADING:

DESIGN LOADS: L/480.000

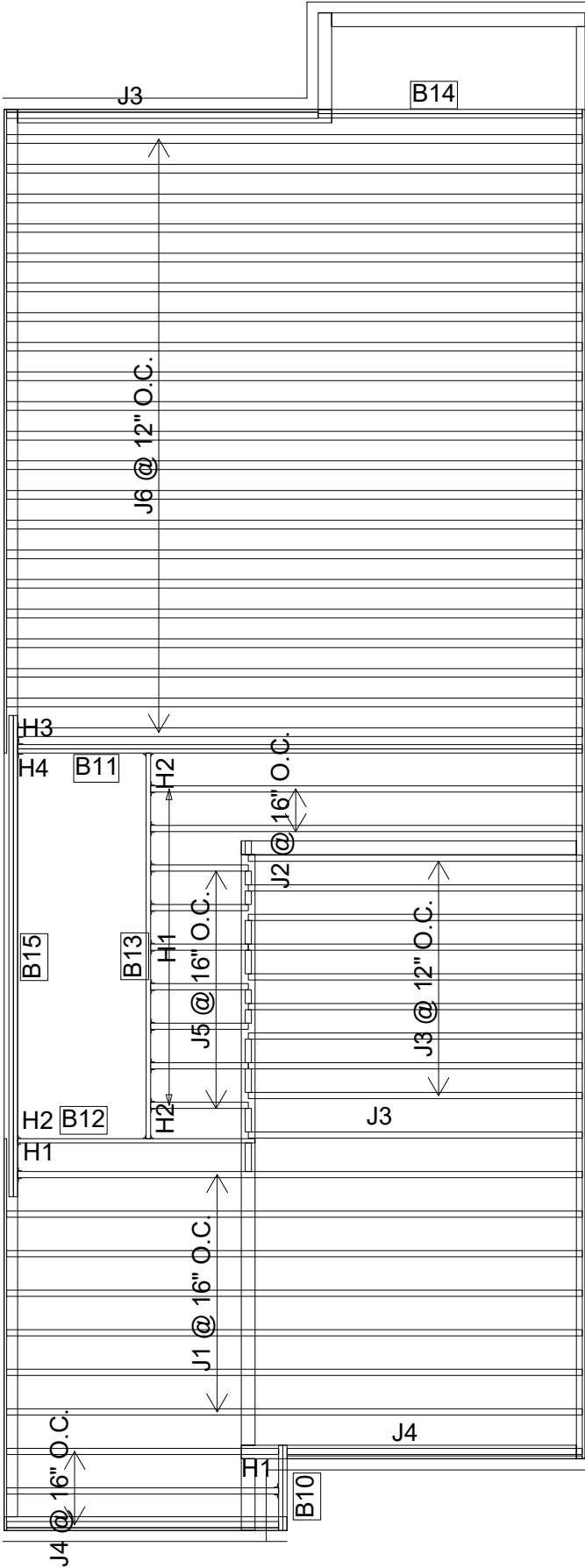
LIVE LOAD: 40.0 lb/ft²

DEAD LOAD: 20.0 lb/ft ²

SUBFLOOR: 5/8" GLUED AND NAILED

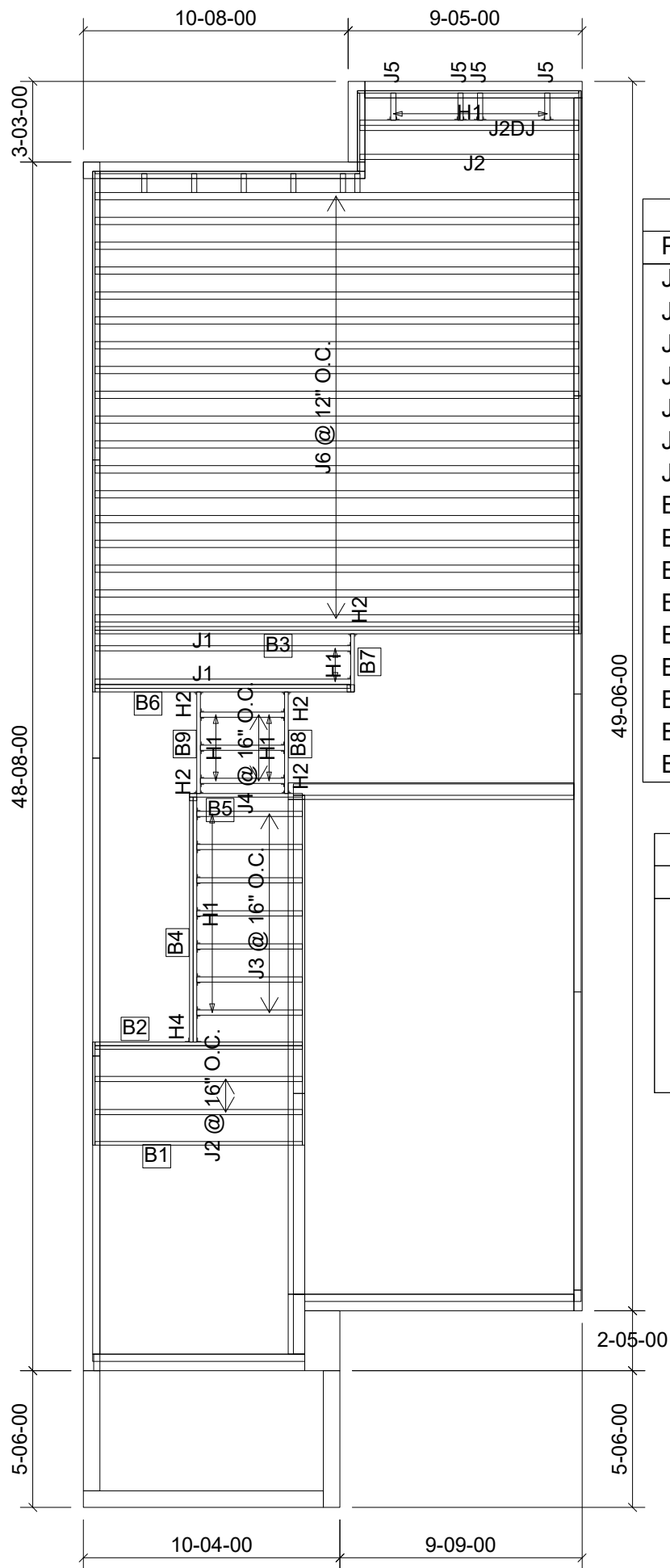
DATE: 2020-07-27

2nd FLOOR



Products				
PlotID	Length	Product	Plies	Net Qty
J1	20-00-00	11 7/8" NI-40x	1	7
J2	16-00-00	11 7/8" NI-40x	1	2
J3	12-00-00	11 7/8" NI-40x	1	11
J4	10-00-00	11 7/8" NI-40x	1	4
J5	4-00-00	11 7/8" NI-40x	1	7
J6	20-00-00	11 7/8" NI-80	1	21
B11	20-00-00	1-3/4" x 11-7/8" VERSA-LAM® 2.0 3100 SP	2	2
B15	18-00-00	1-3/4" x 11-7/8" VERSA-LAM® 2.0 3100 SP	2	2
B13	14-00-00	1-3/4" x 11-7/8" VERSA-LAM® 2.0 3100 SP	1	1
B14	10-00-00	1-3/4" x 11-7/8" VERSA-LAM® 2.0 3100 SP	2	2
B12	8-00-00	1-3/4" x 11-7/8" VERSA-LAM® 2.0 3100 SP	1	1
B10	4-00-00	1-3/4" x 11-7/8" VERSA-LAM® 2.0 3100 SP	2	2

Connector Summary		
Qty	Manuf	Product
9	H1	IUS2.56/11.88
2	H1	IUS2.56/11.88
1	H2	HUS1.81/10
2	H2	HUS1.81/10
1	H3	IUS3.56/11.88
1	H4	HGUS410



Products				
PlotID	Length	Product	Plies	Net Qty
J1	12-00-00	11 7/8" NI-40x	1	2
J2	10-00-00	11 7/8" NI-40x	1	3
J2DJ	10-00-00	11 7/8" NI-40x	2	2
J3	6-00-00	11 7/8" NI-40x	1	7
J4	4-00-00	11 7/8" NI-40x	1	3
J5	2-00-00	11 7/8" NI-40x	1	4
J6	20-00-00	11 7/8" NI-80	1	18
B3	20-00-00	1-3/4" x 11-7/8" VERSA-LAM® 2.0 3100 SP	2	2
B6	12-00-00	1-3/4" x 11-7/8" VERSA-LAM® 2.0 3100 SP	2	2
B1	10-00-00	1-3/4" x 11-7/8" VERSA-LAM® 2.0 3100 SP	1	1
B2	10-00-00	1-3/4" x 11-7/8" VERSA-LAM® 2.0 3100 SP	2	2
B4	10-00-00	1-3/4" x 11-7/8" VERSA-LAM® 2.0 3100 SP	2	2
B5	6-00-00	1-3/4" x 11-7/8" VERSA-LAM® 2.0 3100 SP	1	1
B8	6-00-00	1-3/4" x 11-7/8" VERSA-LAM® 2.0 3100 SP	1	1
B9	6-00-00	1-3/4" x 11-7/8" VERSA-LAM® 2.0 3100 SP	1	1
B7	4-00-00	1-3/4" x 11-7/8" VERSA-LAM® 2.0 3100 SP	1	1

Connector Summary		
Qty	Manuf	Product
8	H1	IUS2.56/11.88
7	H1	IUS2.56/11.88
4	H1	IUS2.56/11.88
2	H2	HUS1.81/10
3	H2	HUS1.81/10
1	H4	HGUS410



FROM PLAN DATED:

**BUILDER:** ROYAL PINE HOMES

**SITE:** CENTREFIELD WEST GORMLEY

**MODEL:** 2009 END

**ELEVATION:** A,B

**LOT:**

**CITY:** RICHMOND HILL

**SALESMAN:** MARIO DICIANO

**DESIGNER:** AJ

**REVISION:**

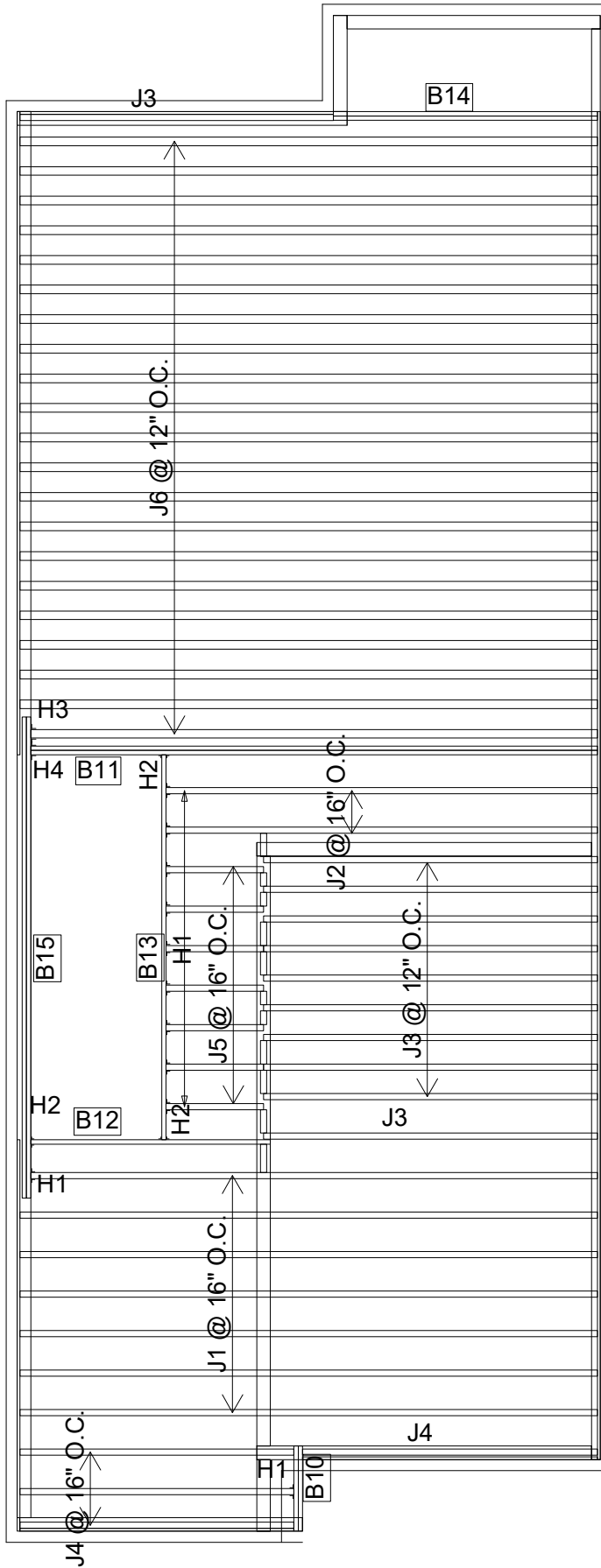
**NOTES:**  
REFER TO THE **NORDIC INSTALLATION** GUIDE FOR PROPER STORAGE AND INSTALLATION.  
**SQUASH BLOCKS** OF 2x4, 2x6, 2x8 #2 S.P.F REQ'D UNDER INTERIOR UNIFORM LOAD BEARING WALLS. **MULTIPLE SQUASH BLOCKS** REQ'D UNDER CONCENTRATED LOADS. SEE FIGURE 1. **CANTILEVERED JOISTS** INCLUDING **CANT' OVER BRICK** REQ. I-JOIST BLOCKING ALONG BEARING AND RIMBOARD CLOSURE AT ENDS. SEE FIGURES 4 & 5 FOR REINFORCEMENT REQUIREMENTS. FOR **HOLES** INCLUDING **DUCT CHASE** AND **FIELD CUT OPENINGS** SEE FIGURE 7, TABLES 1 & 2. **CERAMIC TILE** APPLICATION AS PER O.B.C 9.30.6.

**LOADING:**  
DESIGN LOADS: L/480.000  
LIVE LOAD: 40.0 lb/ft²  
DEAD LOAD: 20.0 lb/ft²

**SUBFLOOR:** 3/4" GLUED AND NAILED

**DATE:** 2020-07-23

# 1st FLOOR



Products				
PlotID	Length	Product	Plies	Net Qty
J1	20-00-00	11 7/8" NI-40x	1	7
J2	16-00-00	11 7/8" NI-40x	1	2
J3	12-00-00	11 7/8" NI-40x	1	11
J4	10-00-00	11 7/8" NI-40x	1	4
J5	4-00-00	11 7/8" NI-40x	1	7
J6	20-00-00	11 7/8" NI-80	1	21
B11	20-00-00	1-3/4" x 11-7/8" VERSA-LAM® 2.0 3100 SP	2	2
B15	18-00-00	1-3/4" x 11-7/8" VERSA-LAM® 2.0 3100 SP	2	2
B13	14-00-00	1-3/4" x 11-7/8" VERSA-LAM® 2.0 3100 SP	1	1
B12	10-00-00	1-3/4" x 11-7/8" VERSA-LAM® 2.0 3100 SP	1	1
B14	10-00-00	1-3/4" x 11-7/8" VERSA-LAM® 2.0 3100 SP	2	2
B10	4-00-00	1-3/4" x 11-7/8" VERSA-LAM® 2.0 3100 SP	2	2

Connector Summary		
Qty	Manuf	Product
9	H1	IUS2.56/11.88
2	H1	IUS2.56/11.88
1	H2	HUS1.81/10
2	H2	HUS1.81/10
1	H3	IUS3.56/11.88
1	H4	HGUS410



FROM PLAN DATED:

BUILDER: ROYAL PINE HOMES

SITE: CENTREFIELD WEST GORMLEY

MODEL: 2009 END

ELEVATION: A,B

LOT:

CITY: RICHMOND HILL

SALESMAN: MARIO DICIANO

DESIGNER: AJ

REVISION:

NOTES:

REFER TO THE NORDIC **INSTALLATION GUIDE** FOR PROPER STORAGE AND INSTALLATION. **SQUASH BLOCKS** OF 2x4, 2x6, 2x8 #2 S.P.F. REQ'D UNDER INTERIOR UNIFORM LOAD BEARING WALLS. **MULTIPLE SQUASH BLOCKS** REQ'D UNDER CONCENTRATED LOADS. SEE FIGURE 1. **CANTILEVERED JOISTS INCLUDING CANT' OVER BRICK** REQ. I-JOIST BLOCKING ALONG BEARING AND RIMBOARD CLOSURE AT ENDS. SEE FIGURE 7 TABLES 4 & 5 FOR REINFORCEMENT REQUIREMENTS. FOR **HOLES** INCLUDING **DUCT CHASE** AND **FIELD CUT OPENINGS** SEE FIGURE 7 TABLES 1 & 2 OF THE INSTALLATION GUIDE. **CERAMIC TILE** APPLICATION AS PER O.B.C. 9.30.6

LOADING:

DESIGN LOADS: L/480.000

LIVE LOAD: 40.0 lb/ft²

DEAD LOAD: 20.0 lb/ft ²

SUBFLOOR: 5/8" GLUED AND NAILED

DATE: 2020-07-27

2nd FLOOR