



UNITED ENGINEERING INC
Mechanical and Electrical Consulting Engineers

3645 Keele St. #105
Toronto, ON, M3J 1M6
Email: info@u-eng.ca
T: (416) 398-1999
F: (416) 398-1933

SITE SUPPLEMENTAL INSTRUCTION

PROJECT: Forestside Estates
Attmar & Palleschi Drive
Brampton, Ontario

PROJECT NO.: 18-017

CONTRACT: Electrical

DATE: Apr. 13, 2021

SITE INSTRUCTION NO. E-1

THIS SITE SUPPLEMENTAL INSTRUCTION IS NOT TO BE CONSTRUED AS A CHANGE IN THE CONTRACT PRICE, BUT IS ISSUED FOR CLARIFICATION ONLY. IF A CHANGE IN CONTRACT PRICE IS PERCEIVED, PROVIDE AN ITEMIZED BREAKDOWN OF ANY EXTRAS OR CREDITS WITHIN SEVEN (7) WORKING DAYS.

PURPOSE: Revise per client request and clarify to suit mechanical drawings.

1.0 Reference Drawings E-2A/2B (Parking Level - Electrical) Issued

- 1.1 Revise: To note one exhaust fan F-5 run continuously as shown.
- 1.2 Add: Notes 'refer to mechanical fan schedule for fans run continuously'.

2.0 Reference Drawings E-12 (Single Line Diagram - Electrical) Issued

- 2.1 Revise: Single line diagram as shown.

PREPARED BY: _____

Susan Pan

Susan Pan
Electrical Department

ISSUED TO ROYAL PINE HOMES,
Cinzia Caruso, Cinzia@royalpinehomes.com;
Vince Staffieri, vince@royalpinehomes.com;
Frank Carogioiello, frank@royalpinehomes.com;
Steve Carogioiello, steve@royalpinehomes.com;
Peter Szlichta, Peter@royalpinehomes.com
FOR DISTRIBUTION TO ALL AFFECTED PARTIES.



- KEY NOTES:**
- ◇ WHEN CONNECTING GARAGE LIGHTS TO "OSS", EACH SENSOR TO BE AS A LIGHT BAY.
 - ◇ CO AUDIO/VISUAL REMOTE INDICATOR LIGHT.
 - ◇ GENERATOR BLOCK HEATER (CONFIRM LOCATION ON SITE) EBI-19/21
 - ◇ GENERATOR BATTERY CHARGER EBI-17
 - ◇ INSULATE AND ELECTRICALLY TRACE ALL SPRINKLER PIPES AND HEADS IN GENERATOR ROOM FED FROM PANEL EF
 - ◇ TOP OF LOWER STAIR SMOKE DETECTOR AND SPEAKER C/W FIRE ALARM ZONE
 - ◇ GARBAGE COMPACTOR TRISORT, EXACT LOCATION TBC FED FROM DP26
 - ◇ 20A TRISORT CONTROL PANEL
 - ◇ ALL ELECTRICAL DEVICES LOCATED IN GARBAGE ROOM SHOULD BE WEATHER PROOF (TYPICAL)
 - ◇ 1/2" CONDUIT OUTLETS FOR:
 - TELEPHONE
 - ELEVATOR RECALL
 - SECURITY/INTERCOM
 - GEN. HOMING SIGNALCONFIRM EXACT QUANTITY AND TERMINATE ON SITE, AS PER THE LOCATION OF CONTROLLER SHOWN IN ELEVATOR SHOP DRAWINGS. COORDINATE WITH ELEVATOR INSTALLER PRIOR TO ROUGH IN.
 - ◇ DISCONNECTS FOR ELEVATOR POWER SUPPLY FED FROM ELEVATOR SHIPPER (SPS)
 - ◇ DISCONNECTS FOR GAS LIGHTS ETC
 - ◇ REFER TO SINGLE LINE DIAGRAM FOR DETAILS. EXACT LOCATION PER ELEVATOR SHOP DRAWINGS.
 - ◇ VANDAL PROOF ELEVATOR SUMP PIT "P-4" (DUPLEX) CONTROL PANEL C/W PADLOCKABLE WIRE CAGE. REFER TO DETAIL. EXACT CIRCUITS AS SHOWN
 - ◇ GARAGE EXHAUST FAN, FED FROM MOP1
 - ◇ PROVIDE VANDAL PROOF CONTROL EQUIPMENT, TO BE INTERLOCKED WITH CO SYSTEM (ONE UNIT IN TOP OF THE OTHER)
 - ◇ VANDAL PROOF SANITARY SUMP PIT C/W PUMP "P-2" (DUPLEX) CONTROL PANEL C/W PADLOCKABLE WIRE CAGE. REFER TO DETAIL
 - ◇ NOT USED
 - ◇ PROVIDE INSULATION AND ELECTRICAL TRACING ON ALL DOMESTIC COLD WATER PIPING OUTSIDE HEATED PLENUM (TYPICAL) FED FROM PANEL EF
 - ◇ PROVIDE INSULATION AND ELECTRICAL TRACING ON ALL VERTICAL NON FREEZE HOSE BIB PIPING OUTSIDE HEATED PLENUM (TYPICAL FOR 12) FED FROM PANEL EF
 - ◇ INSULATED AND ELECTRICALLY TRACE EXPOSED PIPING FED FROM PANEL EF
 - ◇ NOT USED
 - ◇ VANDAL PROOF STORM SUMP PIT C/W PUMP "P-3" (DUPLEX) CONTROL PANEL C/W PADLOCKABLE WIRE CAGE. REFER TO DETAIL
 - ◇ NOT USED
 - ◇ 1KW HEATER C/W BUILT IN THERMOSTAT IN HEATED PIPE SPACE. BUILDING A AND BUILDING D FED FROM PANEL H1. BUILDING B AND BUILDING C FED FROM PANEL H2. REFER TO MECHANICAL DRAWINGS FOR EXACT LOCATION, QUANTITY AND DETAILS.
 - ◇ NOT USED
 - ◇ WIRELESS SIGNAL RECEIVER TO ACTIVATE Q/H DOOR AND OR CATAWING WEATHERPROOF
 - ◇ Q/H DOOR CONTROL PANEL TO BE INTERCONNECTED TO FIRE ALARM SYSTEM TO OPEN UPON ACTIVATE OF FIRE ALARM
 - ◇ 20# NON FREEZE HOSE BIB PIPE TO ABOVE PROVIDE INSULATION AND ELECTRICAL TRACING ON ALL VERTICAL NON FREEZE HOSE BIB PIPE TO ABOVE UP TO NFHB (TYPICAL OF 16) FED FROM PANEL EF
 - ◇ SMOKE DETECTOR C/W RELAY FOR ELEVATOR RECALL
 - ◇ NET SPRINKLERED PIPING TO BE ELECTRICALLY TRACED AND INSULATED, FED FROM PANEL EF
 - ◇ AIR COMPRESSOR FED FROM PANEL DP61
 - ◇ CONFIRM EXACT LOCATION ON SITE
 - ◇ DISCONNECT SWITCH AND 4"x4" JUNCTION BOX
 - ◇ 1-1/4" CONDUIT FOR POWER TO MAIN ELECTRICAL ROOM
 - ◇ 3/4" CONDUIT FOR COMMUNICATION TO COMMUNICATION ROOM
 - ◇ ROUGH-IN FOR PROVISION FOR FUTURE GAS CHARGING SYSTEM PLUG COMPARTMENT TO SUIT SUPPLIER TYPE. PROVIDE SEPARATE CHECK METER. REFER TO KSI CHARGING SYSTEMS. FED FROM DP-25.

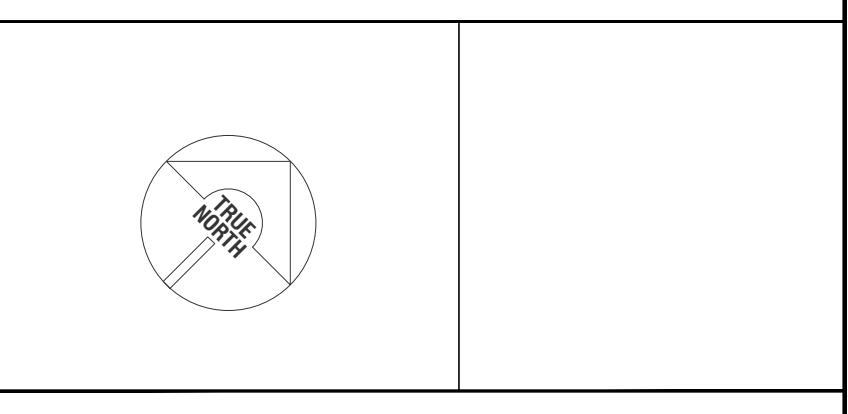
- NOTES:**
1. ALL INSULATE AND ELECTRICALLY HEAT TRACING TO BE READ IN CONJUNCTION WITH MECHANICAL AND SPRINKLER DRAWINGS.
 2. PROVIDE 120V POWER SUPPLIER FOR IRRIGATION CONTROLLER FED FROM M1-36
 3. EXACT IRRIGATION CONTROLLER LOCATION AND POWER REQUIREMENT FOR IRRIGATION PUMP "P-4" TBC BY LANDSCAPE DESIGNER.

- GENERAL NOTES:**
1. A COMPLETE NETWORKED GAS DETECTION AND CONTROL SYSTEM TO BE PROVIDED AND INSTALLED WHERE THE VENTILATION SYSTEM MAY BE HOODED UP DIRECTLY TO THE GAS DETECTION SYSTEM. (REFER TO GAS DETECTOR SYSTEM TYPICAL INSTALLATION DETAIL FOR MORE INFORMATION).
 2. FINAL DRIFT DWP AND TEST POINTS LOCATIONS MUST BE CO-ORDINATED WITH THE FIRE PROTECTION CONTRACTOR ON SITE. ALL DRIFT DWP AND TEST POINTS TO BE ELECTRICALLY TRACED AND INSULATED. FED FROM PANEL EF (TYPICAL). (REFER TO FIRE PROTECTION DRAWINGS FOR EXACT LOCATION FOR DRIFT DWP, TEST CONNECTIONS, PNC AND OTHER PIPE TRACING REQUIREMENT IN THE PROTECTION SYSTEM, AS NOT AVAILABLE AT THE TIME OF TENDERS)
 3. FINAL EXPOSED P-TRAPS MUST BE CO-ORDINATED WITH MECHANICAL CONTRACTOR ON SITE. ALL EXPOSED P-TRAPS TO BE ELECTRICALLY TRACED AND INSULATED. FED FROM PANEL EF (TYPICAL).
 4. PROVIDE LIGHT SENSORS/OCCUPANCY SENSORS WHICH IS (ARE) INTERLOCKED WITH THE OPERATION OF THE EXHAUST FAN SERVING THE ROOM FOR MECHANICAL ROOMS AND STORAGE ROOMS. (C/F REFER TO MECHANICAL FAN SCHEDULE FOR FANS TO BE 24HRS OPERATION (TYPICAL).
 5. ALL OCCUPANCY SENSOR INSTALLATION TO BE AS PER MANUFACTURER RECOMMENDATION.
 6. EXIT SIGNS TO BE 5W OR LESS PER FACE.

NO.	BY	DESCRIPTION	DATE
09	SP	ISSUED FOR SITE INSTRUCTION E-1	APR. 13, 2021
08	SP	ISSUED FOR PROGRESSIVE CONSTRUCTION	MAR. 26, 2021
07	SP	ISSUED FOR PERMIT BUILDINGS A, B, C, D	MAR. 03, 2021
06	SP	ISSUED FOR ADD E-4	FEB. 08, 2021
05	SP	ISSUED FOR ADD E-3	JAN. 18, 2021
04	SP	ISSUED FOR PERMIT	SEP. 28, 2020
03	SP	ISSUED FOR ADD E-2	JUN. 15, 2020
02	SP	ISSUED FOR ADD E-1	SEP. 16, 2019
01	SP	ISSUED FOR TENDER	AUG. 02, 2019

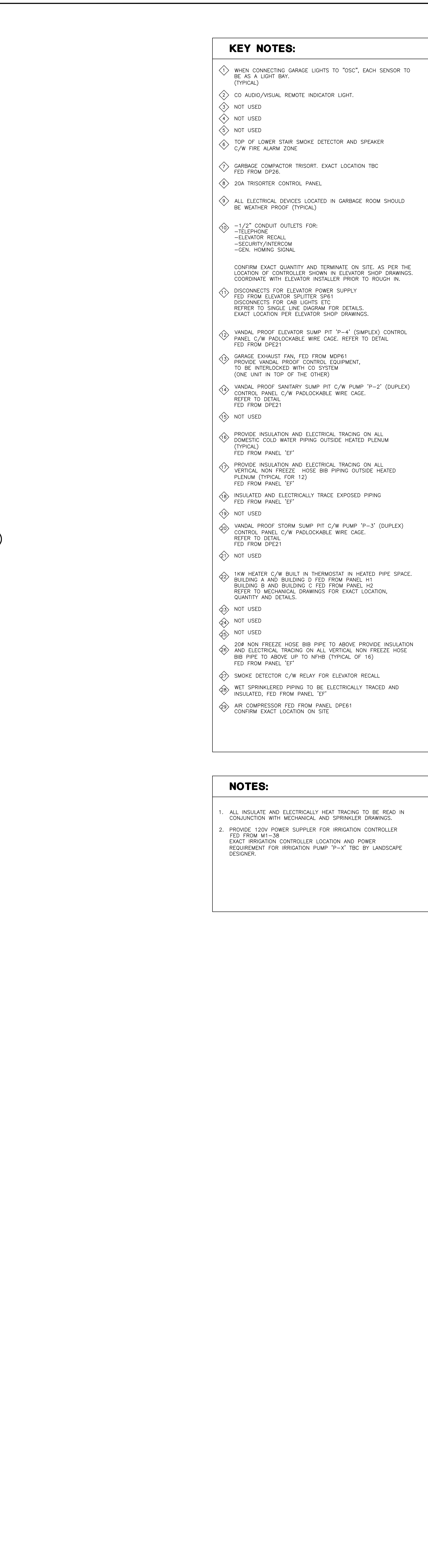
REVISIONS

This drawing, is an instrument of service, is provided by and is the property of United Engineering Inc. The contractor must verify and accept responsibility for all dimensions and conditions on site and must notify United Engineering Inc. of any discrepancy before proceeding. United Engineering Inc. is not responsible for the accuracy of Architectural, structural, interior design, etc., on this drawing. Refer to the appropriate trade drawings before proceeding with any work. Installation must conform to all applicable codes and requirements of the authorities having jurisdiction. This drawing is not to be scaled, all symbols are graphic representations only.



UNITED ENGINEERING INC.
Mechanical Electrical Consulting Engineers
3645 Keele Street, Suite 105,
Toronto, Ontario, M3J 1M6
Tel: (416) 398 1995, Fax: (416) 398 1933

TITLE	PARKING LEVEL PART A ELECTRICAL
PROJECT	BRAMPTON STACKED FORESTSIDE ESTATES
DRAWN	SP
CHECKED	MG
SCALE	1:100
DATE	MAY, 2019
PROJECT	18-017
DRAWING	E-2A
OF	16



1. ALL INSULATE AND ELECTRICALLY HEAT TRACING TO BE READ IN CONJUNCTION WITH MECHANICAL AND SPRINKLER DRAWINGS.
2. PROVIDE 120V POWER SUPPLIER FOR IRRIGATION CONTROLLER FED FROM M1-39
EXACT IRRIGATION CONTROLLER LOCATION AND POWER REQUIREMENT FOR IRRIGATION PUMP "P-X" TBC BY LANDSCAPE DESIGNER.

[illegible]

This drawing, is an instrument of service, is provided by and is the property of United Engineering Inc. The contractor must verify and accept responsibility for all dimensions and conditions on site and must notify United Engineering Inc. of any discrepancy before proceeding. United Engineering Inc. is not responsible for the accuracy of Architectural, structural, interior design, etc. drawings. Refer to the appropriate trade drawings before proceeding with any work. Installation must conform to all applicable codes and requirements of the authorities having jurisdiction. This drawing is not to be scaled, all symbols are graphic representations only.



DRAWN SP	CHECKED MG	SCALE 1:100
DATE MAY, 2019	PROJECT 18-017	DRAWING E-2B OF 16



UNITED ENGINEERING INC
Mechanical and Electrical Consulting Engineers

3645 Keele St. #105
Toronto, ON, M3J 1M6
Email: info@u-eng.ca
T: (416) 398-1999
F: (416) 398-1933

SITE SUPPLEMENTAL INSTRUCTION

PROJECT: Forestside Estates
Attmar & Palleschi Drive
Brampton, Ontario

PROJECT NO.: 18-017

CONTRACT: Electrical

DATE: Apr. 19, 2021

SITE SI NO. E-2

THIS SITE SUPPLEMENTAL INSTRUCTION IS NOT TO BE CONSTRUED AS A CHANGE IN THE CONTRACT PRICE, BUT IS ISSUED FOR CLARIFICATION ONLY. IF A CHANGE IN CONTRACT PRICE IS PERCEIVED, PROVIDE AN ITEMIZED BREAKDOWN OF ANY EXTRAS OR CREDITS WITHIN SEVEN (7) WORKING DAYS.

PURPOSE: Revised as per City of Brampton comments –
from Joan Lin P. Eng. HVAC plans examiner (Apr 12, 2021).

1.0 Reference Drawings E-9A (Details A - Electrical) Issued

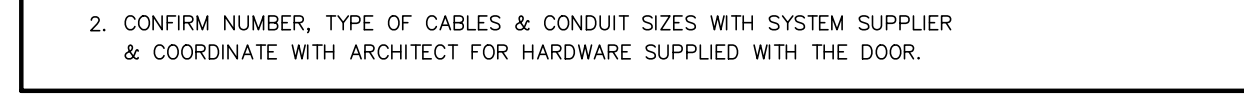
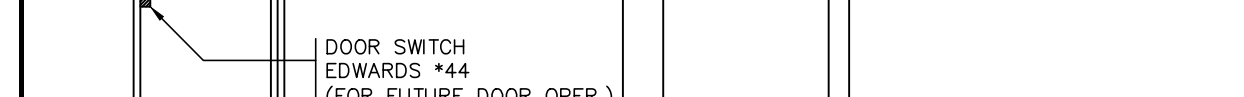
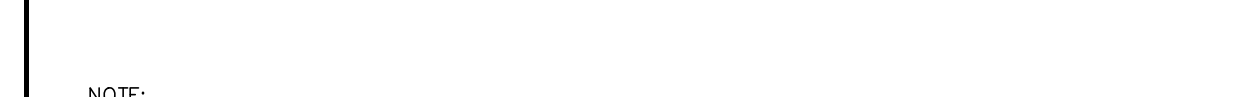
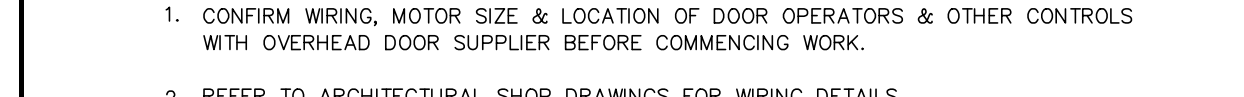
1.1 Add: Note for CO monitor system detail as shown.

PREPARED BY: _____

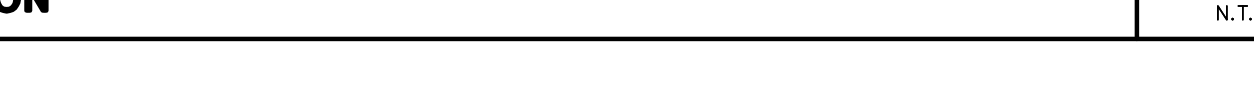
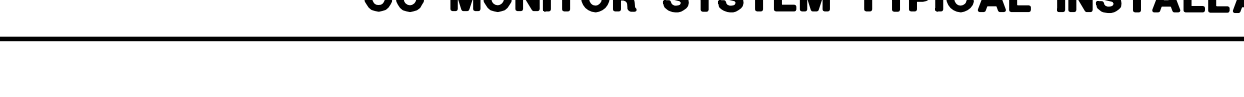
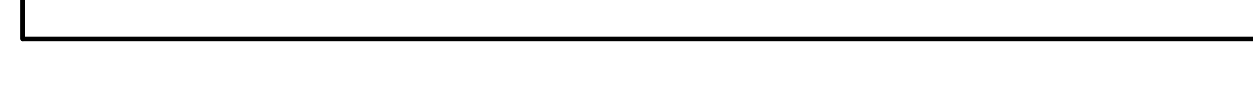
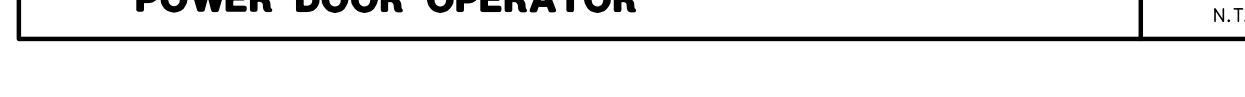
Susan Pan

Susan Pan
Electrical Department

ISSUED TO ROYAL PINE HOMES,
Cinzia Caruso, Cinzia@royalpinehomes.com;
Vince Staffieri, vince@royalpinehomes.com;
FOR DISTRIBUTION TO ALL AFFECTED PARTIES.



ELECTRIC HEATER SCHEDULE	SCALE: N.T.
---------------------------------	----------------

REVISIONS

This drawing, is an instrument of service, is provided by and is the property of United Engineering, Inc. The contractor must verify and accept responsibility for all dimensions and conditions on site and must notify United Engineering Inc. of any discrepancy before proceeding.

United Engineering Inc. is not responsible for the accuracy of Architectural, structural, interior design, etc. on this drawing.

Refer to the appropriate trade drawings before proceeding with any work. Installation must conform to all applicable codes and requirements of the authorities having jurisdiction.

This drawing is not to be scaled, all symbols are graphic representations only.



TITLE DETAILS A ELECTRICAL

BRAMPTON STACKED
FORESTSIDE ESTATES

ATTMAR + PALLESCHI DRIVE
BRANTFORD, ONTARIO

DRAWN SP	CHECKED MG	SCALE N.T.S.
DATE MAY, 2019	PROJECT 18-017	DRAWING E-9A OF 16