



UNITED ENGINEERING INC
Mechanical and Electrical Consulting Engineers

3645 Keele St. #105
Toronto, ON, M3J 1M6
Email: info@u-eng.ca
T: (416) 398-1999
F: (416) 398-1933

SITE INSTRUCTION

PROJECT: HAMPTON MANOR
25 BAKER HILL BLVD
STOUFFVILLE, ONTARIO

PROJECT NO: 14-016

CONTRACT: Mechanical

DATE June 20, 2019

SITE INSTRUCTION: M-28

THIS SITE INSTRUCTION IS NOT TO BE CONSTRUED AS A CHANGE IN THE CONTRACT PRICE, BUT IS ISSUED FOR CLARIFICATION ONLY. IF A CHANGE IN CONTRACT PRICE IS PERCEIVED, PROVIDE AN ITEMIZED BREAKDOWN OF ANY EXTRAS OR CREDITS WITHIN SEVEN (7) WORKING DAYS.

Purpose: Revised & relocated mechanical diffuser type to suit interior design layout.

1.0 Reference Drawing M-10, M-12 (2nd Floor Plan) Issued

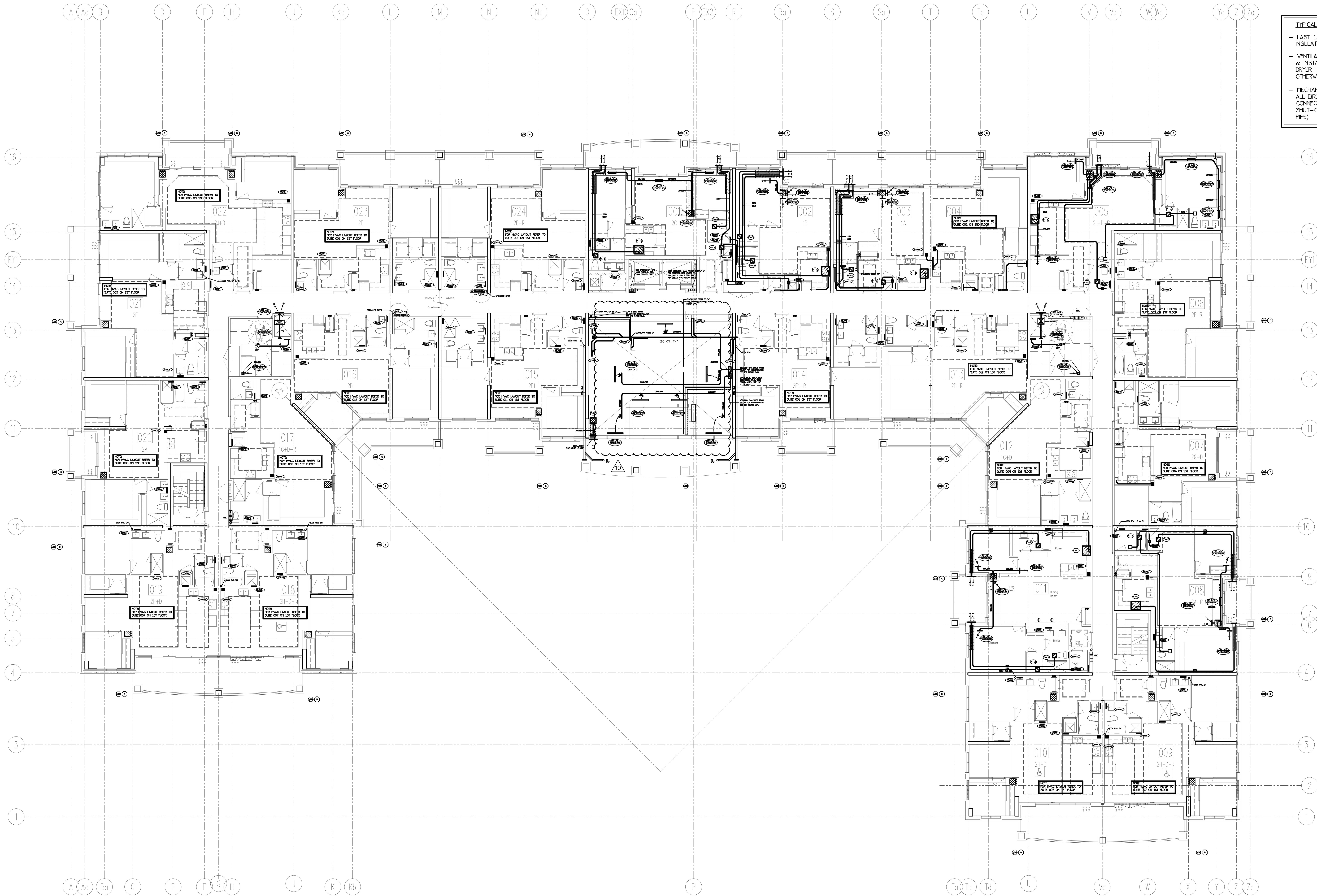
1.1 Relocated: Diffuser.

1.2 Revised: Diffuser's type.

PREPARED BY:


Leon Bai
Mechanical Department

ISSUED TO ROYAL PINE HOMES,
Cinzia Caruso, Cinzia@royalpinehomes.com;
Vince Staffieri, vince@royalpinehomes.com
FOR DISTRIBUTION TO ALL AFFECTED PARTIES.



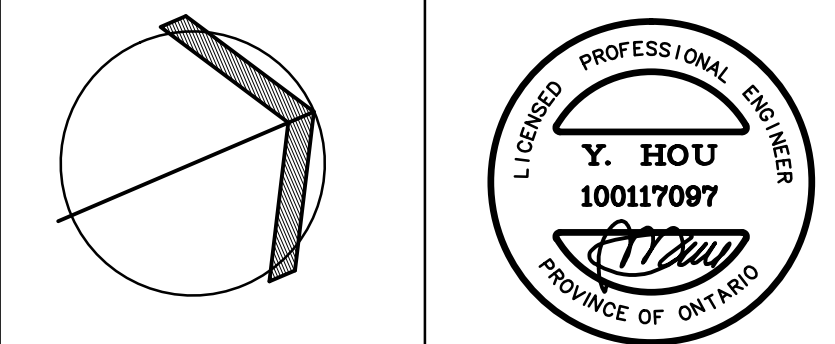
TYPICAL SUITE NOTES:

- LAST 1.8M OF EXHAUST DUCTWORK C/W INSULATION & VAPOUR BARRIER (TYPICAL)
- VENTILATION CONTRACTOR SHALL SUPPLY & INSTALL THE FLEXIBLE DRYER HOSE FROM DRYER TO THE RIGID EXHAUST DUCT UNLESS OTHERWISE NOTED BY OWNER
- MECHANICAL CONTRACTOR SHALL MAKE ALL DIRECT PLUMBING & DRAINAGE CONNECTIONS TO THE DISHWASHER (C/W SHUT-OFF VALVE & COPPER SUPPLY PIPE)

NOTE: FULLY SPRINKLERED BUILDING FOR FIRE PROTECTION DESIGN PLEASE REFER TO DSANO SPRINKLER DESIGN LIMITED DRAWINGS.

NO.	BY	DESCRIPTION	DATE
10	LB	ISSUED FOR SITE INSTRUCTION H-28	JUN/20/2021
9	LD	ISSUED FOR SITE INSTRUCTION H-15R	APR/23/2018
8	LB	REVISED AS PER SITE INSTRUCTION H-15	APR/06/2018
7	LB	REVISED AS PER SITE INSTRUCTION H-14	MAR/14/2018
6	LB	REVISED AS PER SITE INSTRUCTION H-10	OCT/31/2017
5	LB	REVISED AS PER SITE INSTRUCTION H-5	AUG/09/2017
4	LB	PROGRESS FOR CONSTRUCTION	JUL/18/2017
3	LB	ISSUED AS PER SITE INSTRUCTION H-4	MAY/16/2017
2	LM	ISSUED FOR PERMIT	DEC/28/2016
1	LM	ISSUED FOR TENDER	MAR/21/2016

This drawing, is an instrument of service, is provided by and is the property of United Engineering Inc. The contractor must verify and accept responsibility for all dimensions and conditions on site and must notify United Engineering Inc. of any discrepancy before proceeding. United Engineering Inc. is not responsible for the accuracy of Architectural, structural, interior design, etc. on this drawing. Refer to the appropriate trade drawings before proceeding with any work. Installation must conform to all applicable codes and requirements of the authorities having jurisdiction. This drawing is not to be scaled, all symbols are graphic representations only.



United Engineering Inc.
Mechanical Electrical Consulting Engineers
3045 Haste Street, Suite 105,
Toronto, Ontario, M5J 1M6
Tel: (416) 398 1999, Fax: (416) 398 1933

TITLE 2ND FLOORS PLAN MECHANICAL			
PROJECT 25 BAKER HILL BLVD. ROYAL PINE HOMES			
STOUFFVILLE, ONTARIO		PROPOSED RESIDENTIAL DEVELOPMENT	
DRAWN GC	CHECKED BT	SCALE 1:100	DRAWING M-10
DATE JUNE 2015	PROJECT 14-016	OF 42	



NOTE: FULLY SPRINKLERED BUILDING
FOR FIRE PROTECTION DESIGN PLEASE
REFER TO DISANO SPRINKLER DESIGN
LIMITED DRAWINGS.


This drawing, is an instrument of service, is provided by and is the property of United Engineering Inc. The contractor must verify and accept responsibility for all dimensions and conditions on site and must notify United Engineering Inc. of any discrepancy before proceeding.

United Engineering Inc. is not responsible for the accuracy of Architectural, structural, interior design, etc. on this drawing.

Refer to the appropriate trade drawings before proceeding with any work. Installation must conform with applicable codes and requirements of the authorities having jurisdiction.

This drawing is not to be scaled, all symbols are graphic representations only.

The diagram shows a circle with a shaded sector. The sector is defined by two radii and an arc. The radii are drawn as solid lines, and the arc is also solid. The area between the radii and the arc is shaded. Below the circle, there is a signature that appears to be 'Y. Hou'.



United Engineering Inc.
 Mechanical Electrical Consulting Engineers
 3645 Keele Street, Suite 105,
 Toronto, Ontario, M3J 1M6
 Tel: (416) 398 1999, Fax: (416) 398 1933

2ND FLOORS PLAN MECHANICAL-PART

PROJECT
25 BAKER HILL BLVD.
ROYAL PINE HOMES

STOUFFVILLE, ONTARIO
PROPOSED RESIDENTIAL DEVELOPMENT

DRAWN	CHECKED	SCALE
GC	BT	1:50
DATE	PROJECT	DRAWING
JUNE 2015	14-016	M-12
		OF 42