



UNITED ENGINEERING INC

Mechanical and Electrical Consulting Engineers

3645 Keele St. #105
Toronto, ON, M3J 1M6
Email: info@u-eng.ca
T: (416) 398-1999
F: (416) 398-1933

SITE INSTRUCTION

PROJECT: HAMPTON MANOR
25 BAKER HILL BLVD
STOUFFVILLE, ONTARIO

PROJECT NO: 14-016

CONTRACT: Mechanical

DATE May 06, 2019

SITE INSTRUCTION: M-26

THIS SITE INSTRUCTION IS NOT TO BE CONSTRUED AS A CHANGE IN THE CONTRACT PRICE, BUT IS ISSUED FOR CLARIFICATION ONLY. IF A CHANGE IN CONTRACT PRICE IS PERCEIVED, PROVIDE AN ITEMIZED BREAKDOWN OF ANY EXTRAS OR CREDITS WITHIN SEVEN (7) WORKING DAYS.

Purpose: To suit site condition.

1.0 Reference Drawing M-4 (Parking Level Plan) Issued

1.1 Reroute: 350x300 pressurization duct to north end of wall and up to ground.

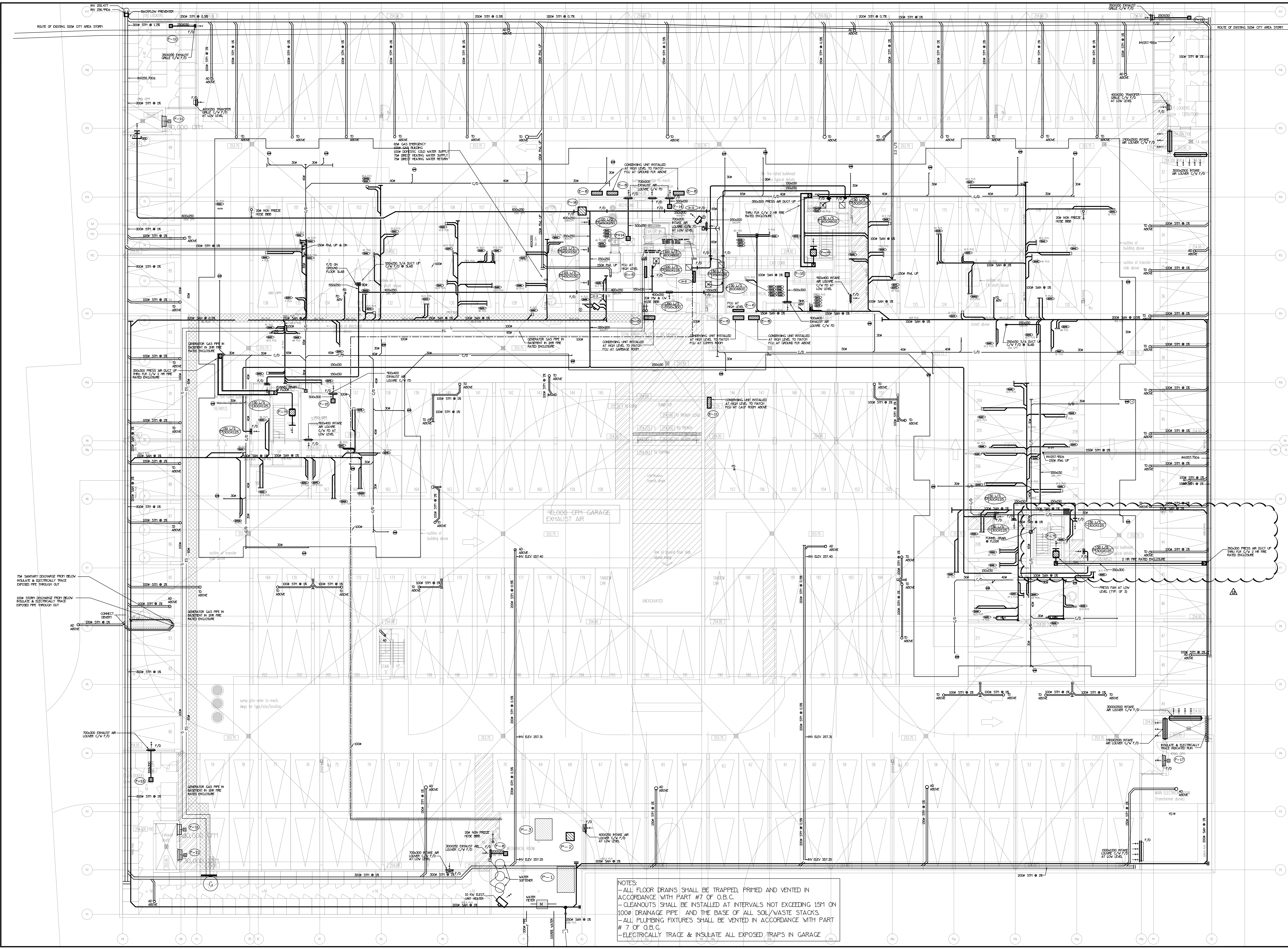
2.0 Reference Drawing M-5, M-9 (1st Floor Level - Mechanical) Issued

2.1 Add: Dog house for pressurization duct from P1 level.

PREPARED BY:

Leon Bai
Mechanical Department

ISSUED TO ROYAL PINE HOMES,
Cinzia Caruso, Cinzia@royalpinehomes.com;
Vince Staffieri, vince@royalpinehomes.com
FOR DISTRIBUTION TO ALL AFFECTED PARTIES.



NOTES:
- ALL FLOOR DRAINS SHALL BE TRAPPED, PRIMED AND VENTED IN ACCORDANCE WITH PART #7 OF O.B.C.
- CLEANOUTS SHALL BE INSTALLED AT INTERVALS NOT EXCEEDING 15M ON 100MM DRAINAGE PIPE, AND THE BASE OF ALL SOL/WASTE STACKS.
- ALL PLUMBING FIXTURES SHALL BE VENTED IN ACCORDANCE WITH PART # 7 OF O.B.C.
- ELECTRICALLY TRACE & INSULATE ALL EXPOSED TRAPS IN GARAGE

13	LB	REVISED AS PER SITE INSTRUCTION P-26	MAY/06/2011
12	LB	REVISED AS PER SITE INSTRUCTION P-25	JAN/15/2011
11	LB	REVISED AS PER SITE INSTRUCTION P-22	AUG/03/2010
10	LB	REVISED AS PER SITE INSTRUCTION P-22	JUN/04/2010
9	LB	REVISED AS PER SITE INSTRUCTION P-13	FEB/03/2010
8	LB	REVISED AS PER SITE INSTRUCTION P-12	DEC/13/2007
7	LB	REVISED AS PER SITE INSTRUCTION P-11	DEC/11/2007
6	LB	REVISED AS PER SITE INSTRUCTION P-9	OCT/19/2007
5	LB	REVISED AS PER SITE INSTRUCTION P-7	SEP/11/2007
4	LB	ISSUED FOR SITE INSTRUCTION P-5	AUG/09/2007
3	LB	PROGRESS FOR CONSTRUCTION	JUL/18/2007
2	LH	ISSUED FOR PERMIT	DEC/28/2006
1	LH	ISSUED FOR TENDER	MAY/21/2006

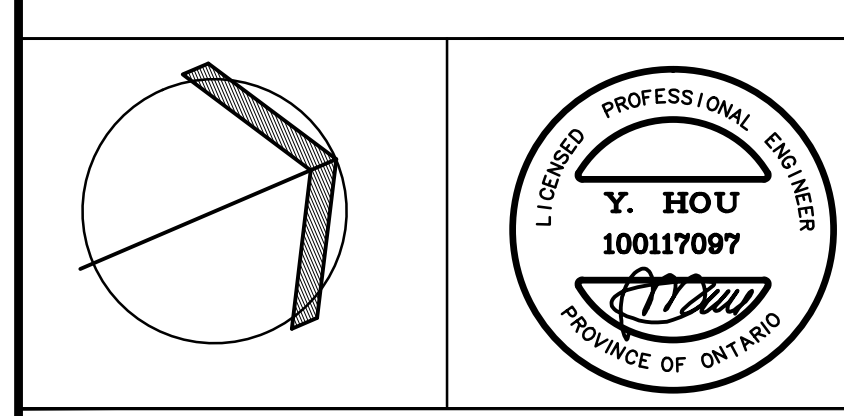
NO.	BY	DESCRIPTION	DATE
REVISIONS			

This drawing is an instrument of service, is provided by and is the property of United Engineering Inc. The contractor must verify and accept responsibility for all dimensions and conditions on site and must notify United Engineering Inc. of any discrepancy before proceeding.

United Engineering Inc. is not responsible for the accuracy of Architectural, structural, interior design, etc. on this drawing.

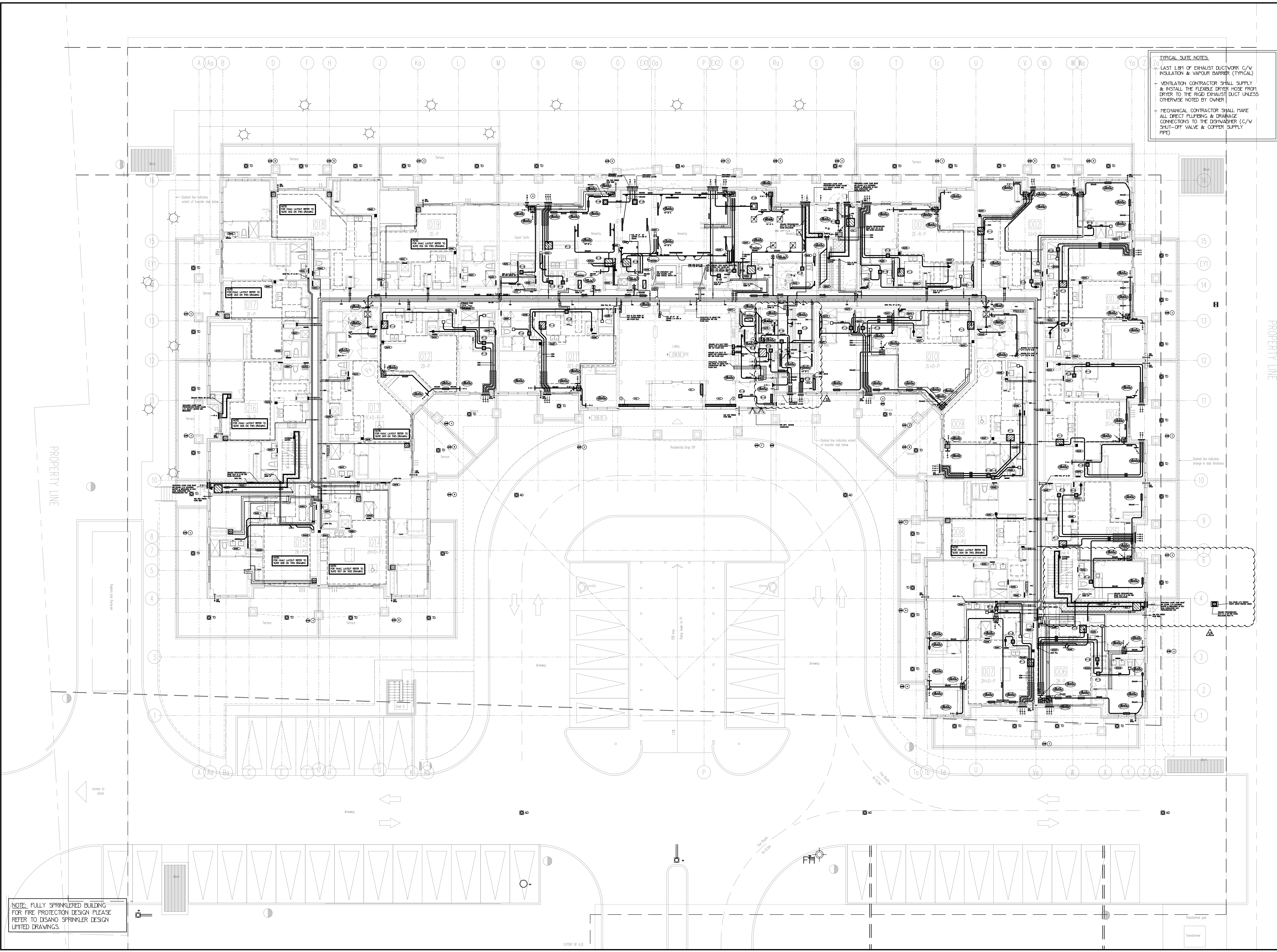
Refer to the appropriate trade drawings before proceeding with any work. Installation must conform to all applicable codes and requirements of the authorities having jurisdiction.

This drawing is not to be scaled, all symbols are graphic representations only.



United Engineering Inc.
Mechanical/Electrical Consulting Engineers
3045 Keele Street, Suite 105,
Toronto, Ontario, M3J 1W6
Tel: (416) 398-1999, Fax: (416) 398-1933

TITLE	
PARKING LEVEL PLAN MECHANICAL	
PROJECT	
25 BAKER HILL BLVD. ROYAL PINE HOMES	
STOUFFVILLE, ONTARIO	
PROPOSED RESIDENTIAL DEVELOPMENT	
DRAWN	CHECKED
GC	BT
DATE	SCALE
JUNE 2015	1:100
DRAWING	
M-4	
OF 42	

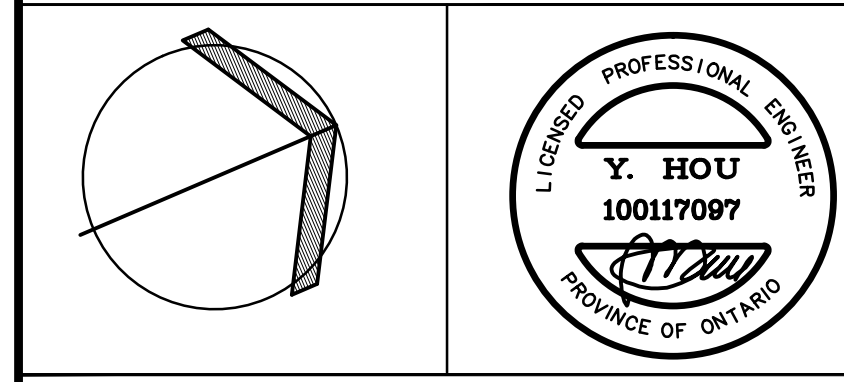


TYPICAL SUITE NOTES:
LAST 1.8M OF EXHAUST DUCTWORK C/V INSULATION & VAPOUR BARRIER (TYPICAL)
VENTILATION CONTRACTOR SHALL SUPPLY & INSTALL THE FLEXIBLE DRYER HOSE FROM DRYER TO THE RIGID EXHAUST DUCT UNLESS OTHERWISE NOTED BY OWNER
MECHANICAL CONTRACTOR SHALL MAKE ALL DIRECT PLUMBING & DRAINAGE CONNECTIONS TO THE DISHWASHER (C/V SHUT-OFF VALVE & COPPER SUPPLY PIPE)

NOTE: FULLY SPRINKLERED BUILDING FOR FIRE PROTECTION DESIGN PLEASE REFER TO DISANO SPRINKLER DESIGN LIMITED DRAWINGS.

NO.	BY	DESCRIPTION	DATE
13	LB	REVISED AS PER SITE INSTRUCTION H-26	MAY/06/2017
12	LB	REVISED AS PER SITE INSTRUCTION H-25	JAN/15/2017
11	LB	REVISED AS PER SITE INSTRUCTION H-24	NOV/06/2016
10	LB	REVISED AS PER SITE INSTRUCTION H-20	JUN/22/2016
9	LB	REVISED AS PER SITE INSTRUCTION H-17	JUN/04/2016
8	LB	REVISED AS PER SITE INSTRUCTION H-14	MAR/14/2016
7	LB	REVISED AS PER SITE INSTRUCTION H-10	OCT/31/2017
6	LB	REVISED AS PER SITE INSTRUCTION H-7	SEP/11/2017
5	LB	REVISED AS PER SITE INSTRUCTION H-5	AUG/09/2017
4	LB	PROGRESS FOR CONSTRUCTION	JUL/18/2017
3	OP	REVISED AS PER SITE INSTRUCTION H-3	MAR/02/2017
2	LH	ISSUED FOR PERMIT	DEC/28/2016
1	LH	ISSUED FOR TENDER	MAR/21/2016

This drawing, is an instrument of service, is provided by and is the property of United Engineering Inc. The contractor must verify and accept responsibility for all dimensions and conditions on site and must notify United Engineering Inc. of any discrepancy before proceeding.
United Engineering Inc. is not responsible for the accuracy of Architectural, structural, interior design, etc. on this drawing.
Refer to the appropriate trade drawings before proceeding with any work. Installation must conform to all applicable codes and requirements of the authorities having jurisdiction.
This drawing is not to be scaled, all symbols are graphic representations only.



United Engineering Inc.
Mechanical Electrical Consulting Engineers
3045 Keele Street, Suite 105
Toronto, Ontario, M3J 1W6
Tel: (416) 398 1999, Fax: (416) 398 1933

TITLE 1ST FLOOR LEVEL MECHANICAL			
PROJECT 25 BAKER HILL BLVD. ROYAL PINE HOMES			
STOUFFVILLE, ONTARIO PROPOSED RESIDENTIAL DEVELOPMENT			
DRAWN GC	CHECKED BT	SCALE 1:100	DRAWING M-5
DATE JUNE 2015	PROJECT 14-016	OF 42	

