

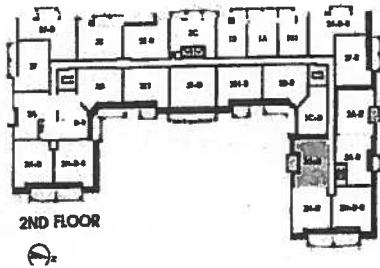
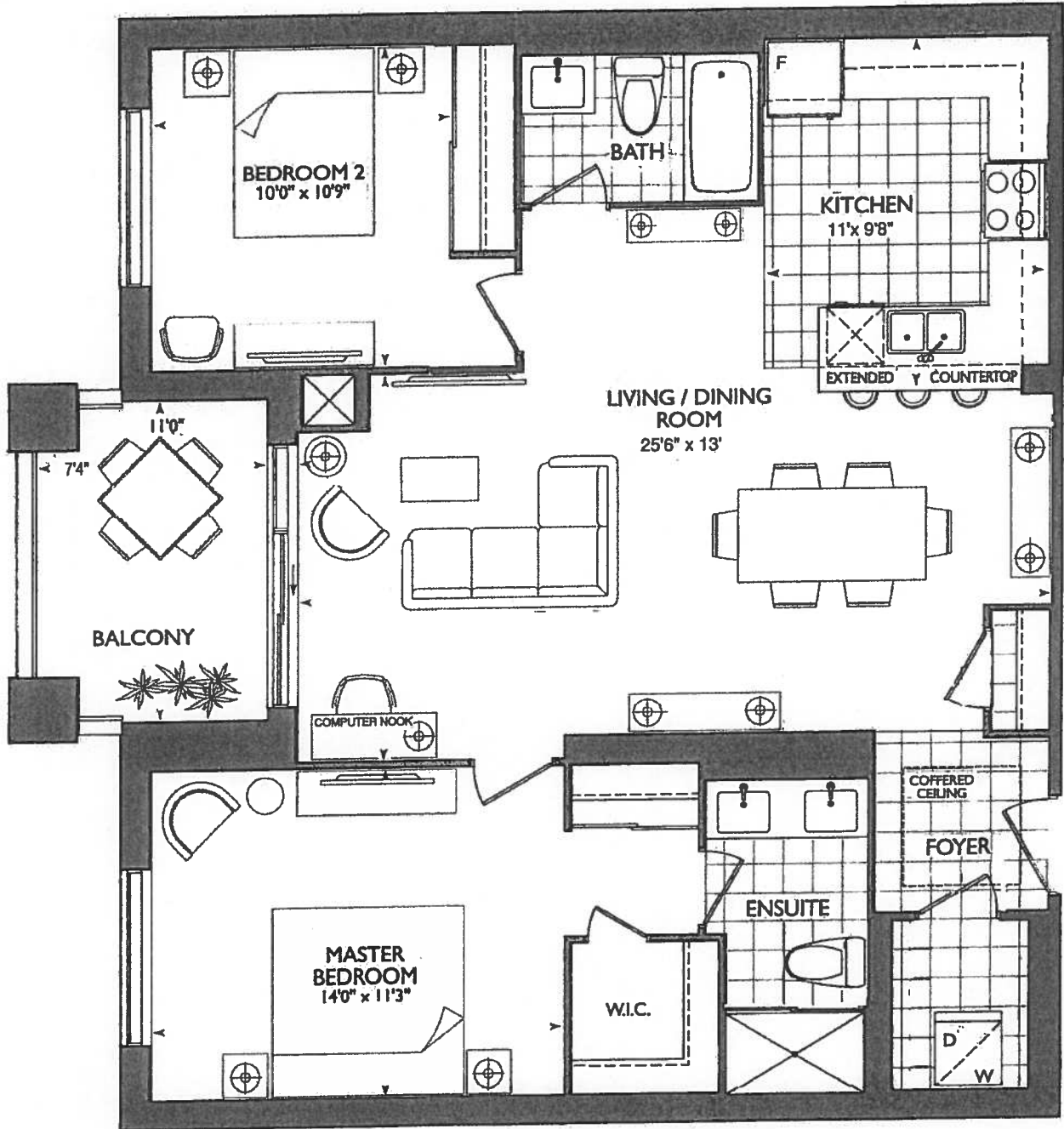


Noyac Bay

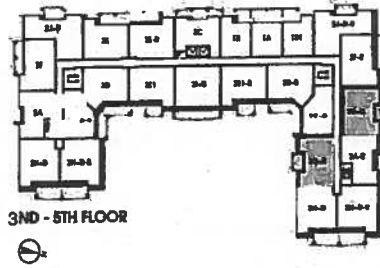
1,121 SQ FT plus 76 sq. ft. of balcony area

SUITE 609
ORIGINAL LAYOUT
INVENTORY SUITE

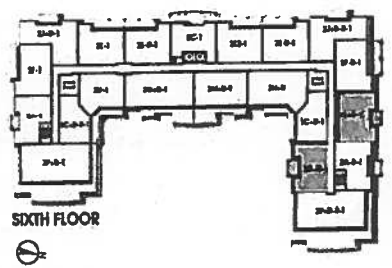
NEW



2ND FLOOR



3ND - 5TH FLOOR



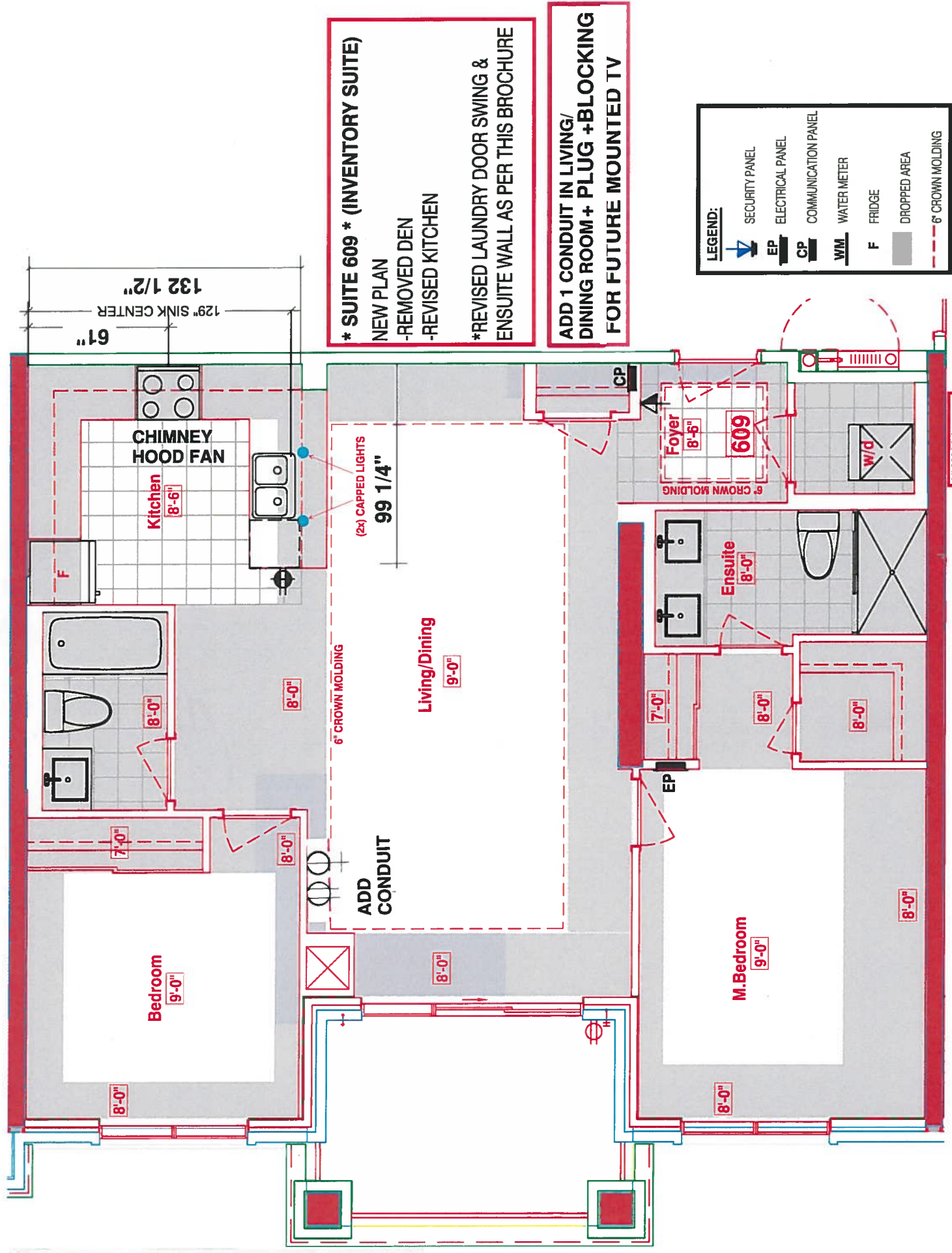
6TH FLOOR

Plans and specifications are subject to change without notice. Actual usable floor space may vary from the stated floor area. All renderings are artist's concept. E. & O. E.



*** KITCHEN ***

- STANDARD KITCHEN LAYOUT
- 1ST UPG. APPLIANCE PACKAGE WITH: 36" FRIDGE, CHIMNEY HOOD FAN, MICROWAVE SHELF
- 2 CAPPED PENDANT LIGHTS
- x 6 PUC LIGHTS
- 61" STOVE CENTER
- 129" SINK PIPE CENTER
- x1 PLUG IN PENINSULA
- MAIN AND ENSUITE RAISED VANITYS
- 36 1/4" WITH 3" SPLASH
- OPTIONAL KITCHEN UPGRADES: MAGIC BASE CORNER' UPPER CORNER 'L' SHAPED CABINET



*** SUITE 609 * (INVENTORY SUITE)**
 NEW PLAN
 -REMOVED DEN
 -REVISED KITCHEN
 *REVISED LAUNDRY DOOR SWING & ENSUITE WALL AS PER THIS BROCHURE

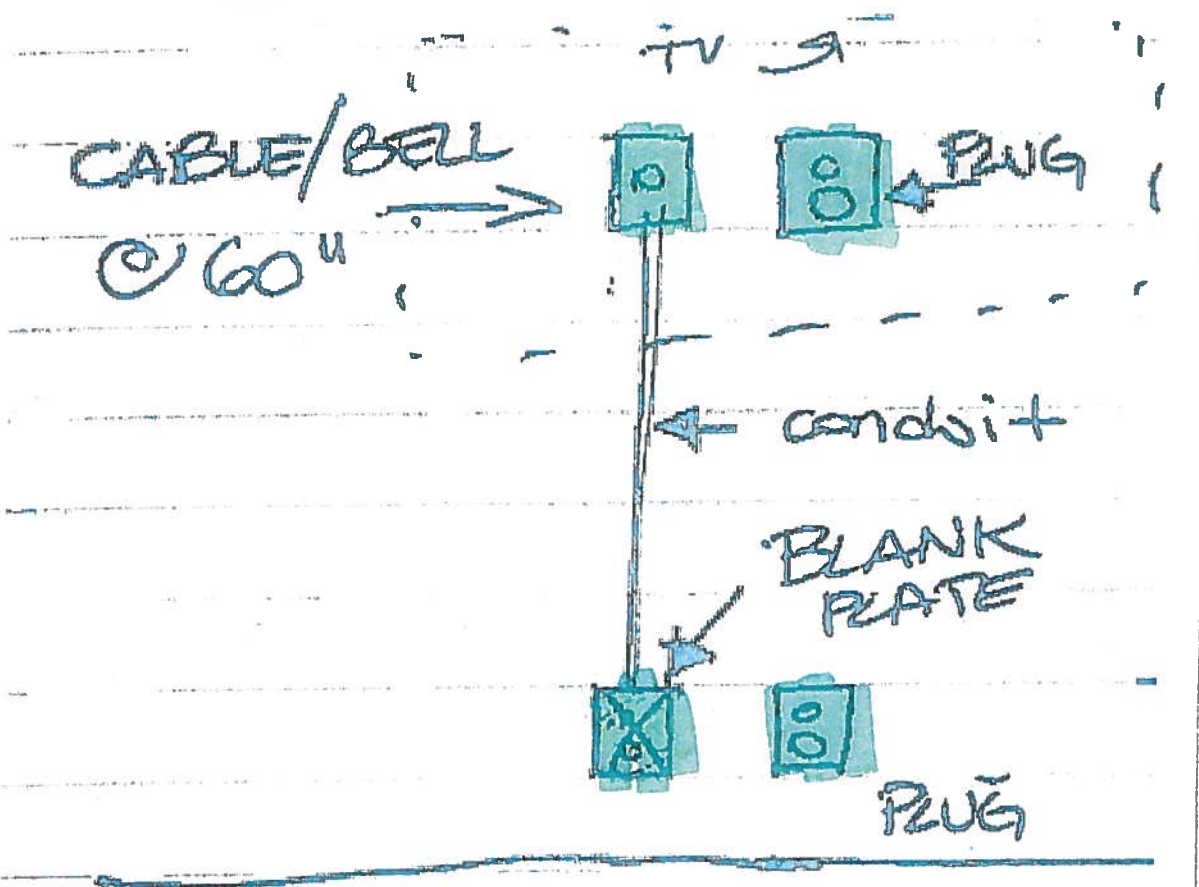
ADD 1 CONDUIT IN LIVING/ DINING ROOM + PLUG +BLOCKING FOR FUTURE MOUNTED TV

6" WALL BEHIND W/D

Suite Hampton

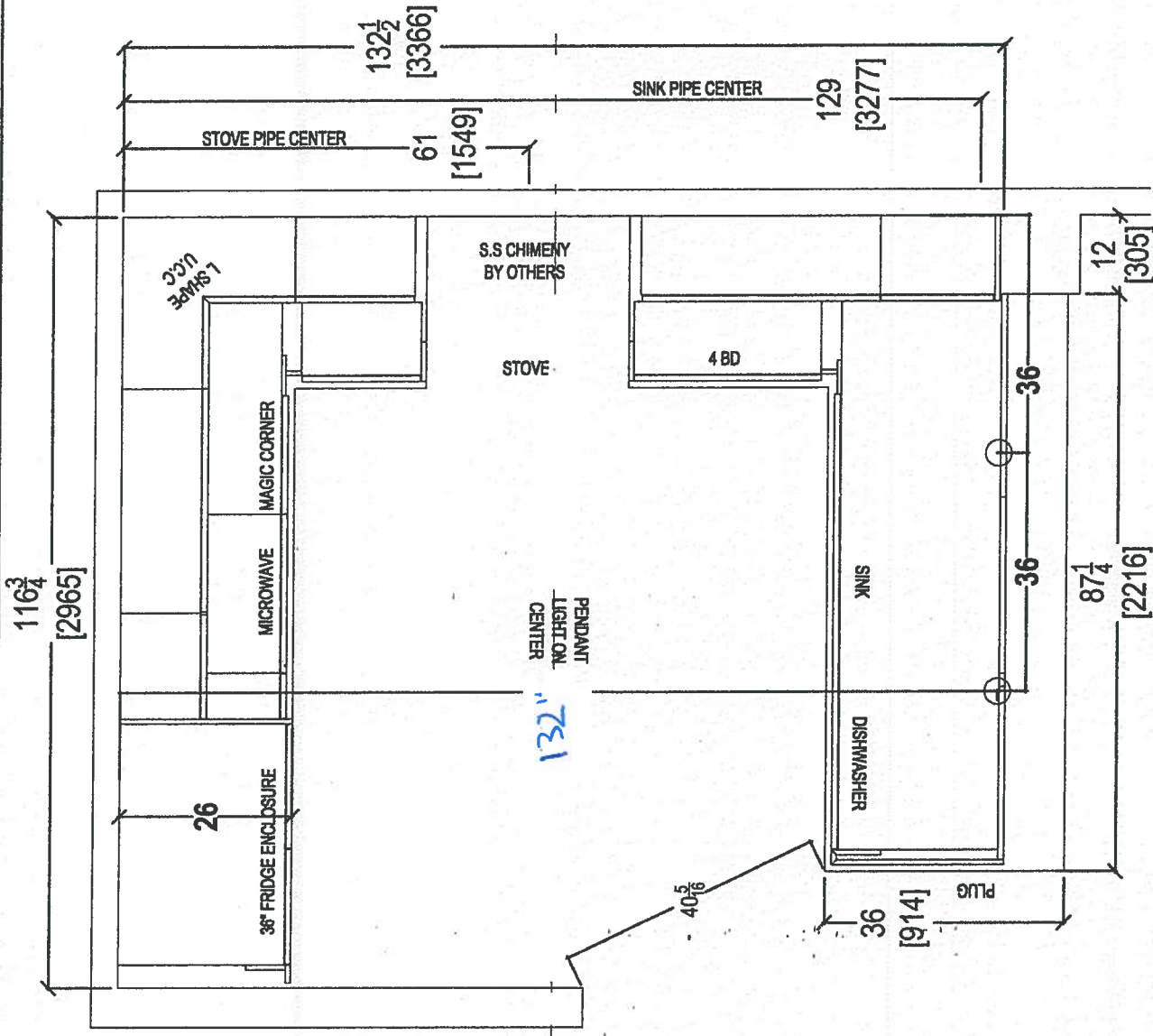
Living Room

→ CONDUIT :



- STD KITCHEN LAYOUT
- W/ OPTIONAL KIT UPGRADES
- MAGIC BASE CORNER CABINET + UPPER "L" SHAPE UPPER CABINET
- 1ST UPGRADE APPLIANCE PKG W/ 36" FRIDGE, CHIMNEY HOOD FAN, MICRO (SHELF)
- (x2) CAPPED LIGHTS
- (x6) PUCK LIGHTS
- (x1) PLUG PENINSULA

* MAIN + ENSUITE RMSD VANITIES W/ 3" SPLASH



CLIENT: ROYAL PINE HOMES
SITE: HAMPTON PLACE
PHONE: ---
EMAIL: ---

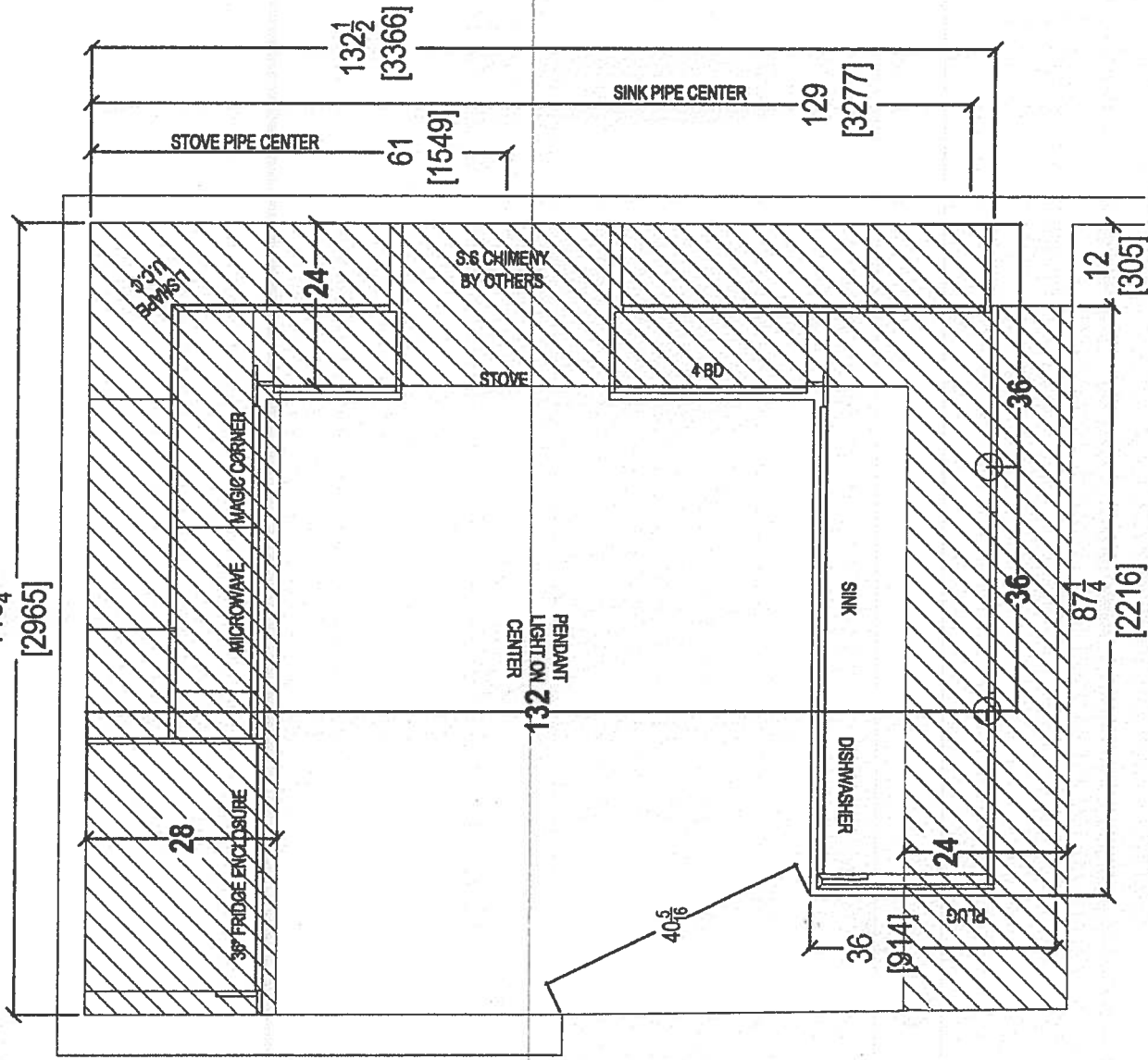
JOB NAME: UNIT 609 HMP
DOOR STYLE: --- ROYAL
FINISH: ---
SPECIES: ---

ROOM: KITCHEN
DOOR HANDLE: ---
DRW HANDLE: ---
TOP: ---

DRAWN BY: SK
SCALE: 1/2" = 1'-0"
DATE: REVISED: MARCH 25, 2019
PAGE:

COMMENTS:
PLEASE NOTE ALL DIMENSIONS ARE NOT FINAL AND ARE SUBJECT TO CHANGE UPON FINAL SITE MEASURE

1163
[2965]



COMMENTS:
PLEASE NOTE ALL DIMENSIONS
ARE NOT FINAL AND ARE
SUBJECT TO CHANGE UPON
FINAL SITE MEASURE

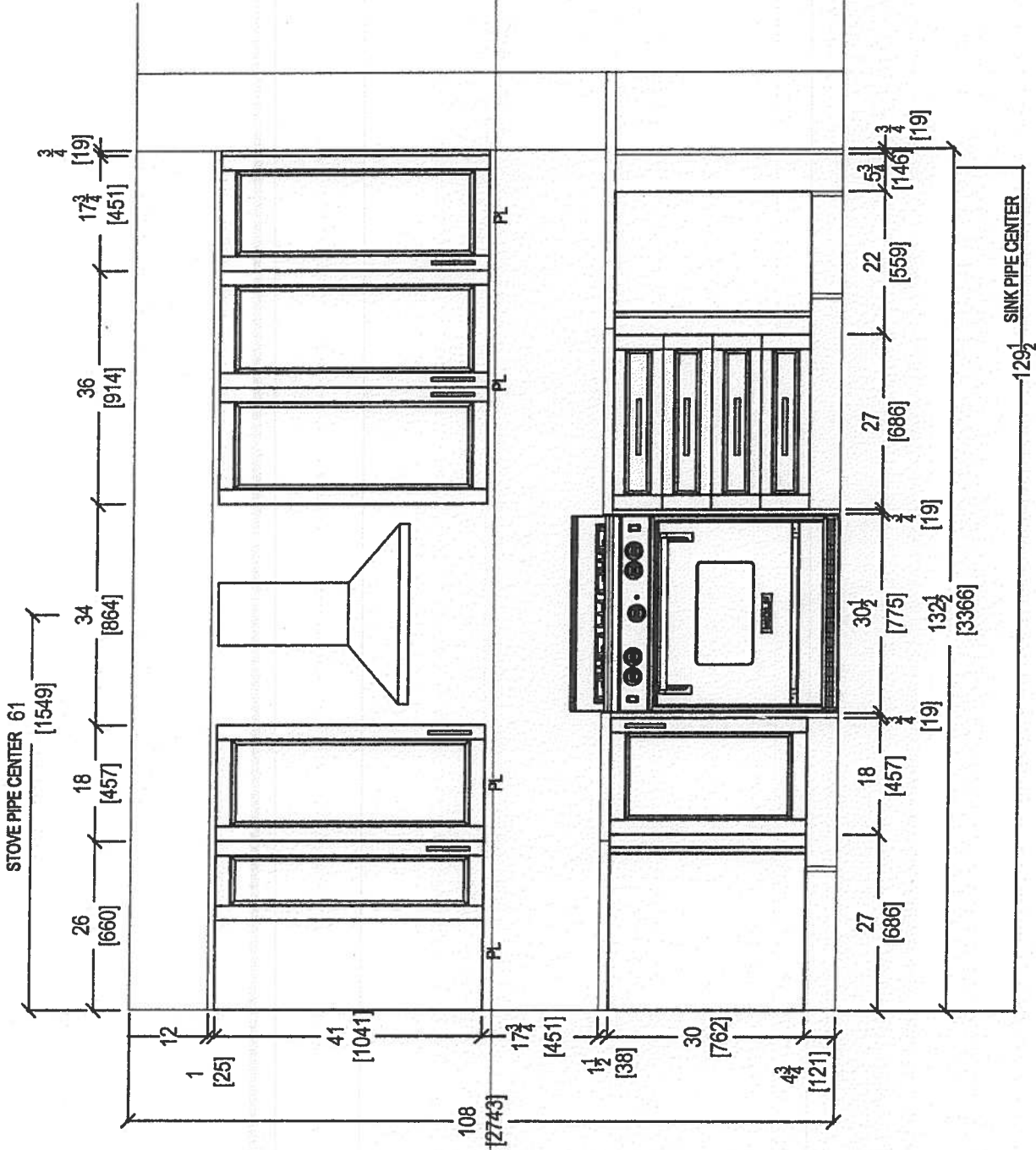
DRAWN BY: SK
SCALE: 1/2" = 1' - 0"
DATE: REVISED: MARCH 25, 2019
PAGE:

ROOM: KITCHEN
DOOR HANDLE: ---
DRW HANDLE: ---
TOP: ---

JOB NAME: UNIT 608 HMP
DOOR STYLE: ---
FINISH: ---
SPECIES: ---

CLIENT: ROYAL PINE HOMES
SITE: HAMPTON PLACE
PHONE: ---
EMAIL: ---

OTK
your kitchen, your taste.
80 SANTE DRIVE, VAUGHAN, ON L4K 3C4,
T: 416.746.1811 F: 905.781.5901



COMMENTS:
 PLEASE NOTE ALL DIMENSIONS
 ARE NOT FINAL AND ARE
 SUBJECT TO CHANGE UPON
 FINAL SITE MEASURE

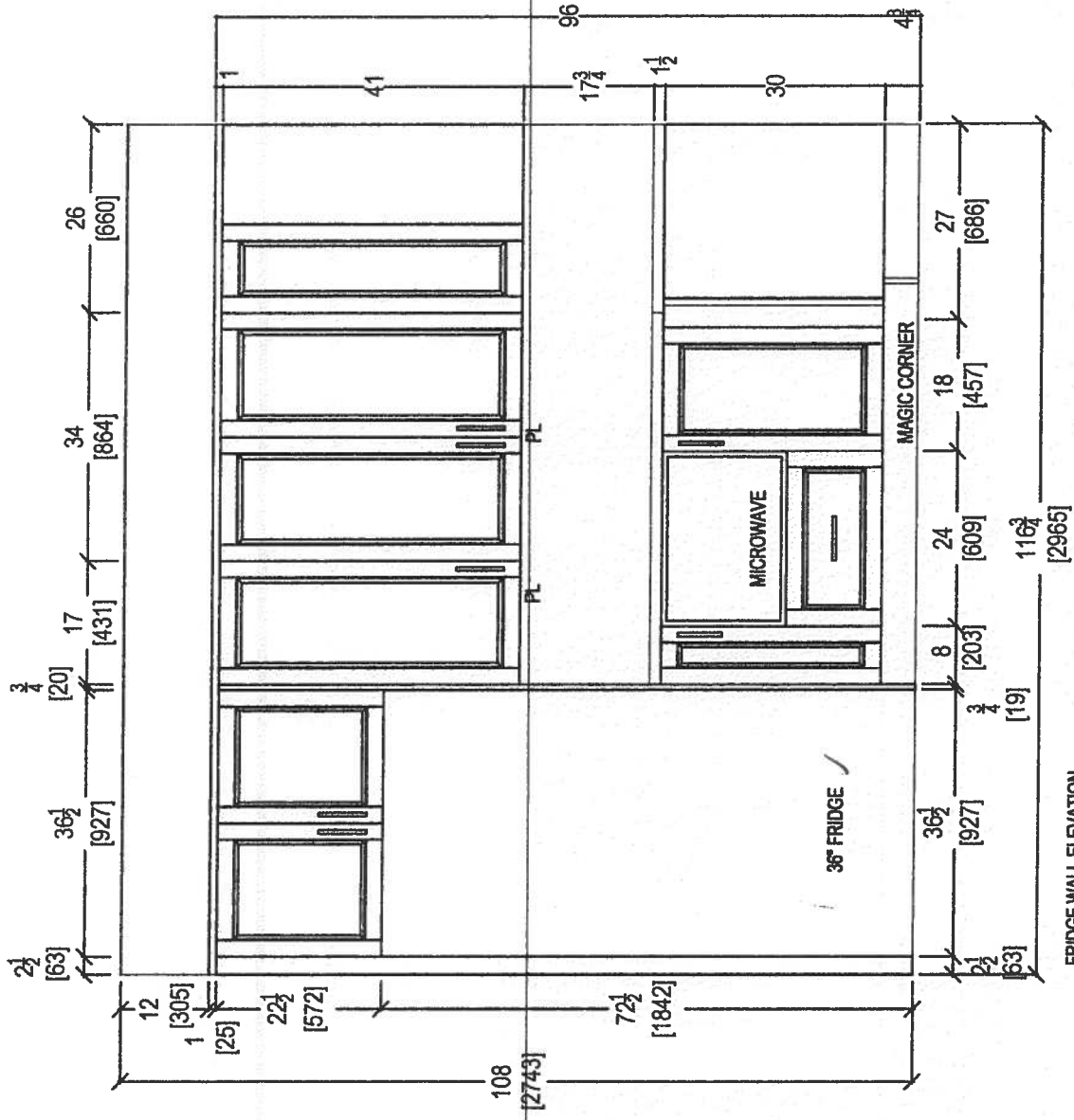
DRAWN BY: SK
 SCALE: 1/2" = 1'-0"
 DATE: REVISED: MARCH 25, 2019
 PAGE:

ROOM: KITCHEN
 DOOR HANDLE: ---
 DRW HANDLE: ---
 TOP: ---

JOB NAME: UNIT 608 HMP
 DOOR STYLE: ---
 FINISH: ---
 SPECIES: ---

CLIENT: ROYAL PINE HOMES
 SITE: HAMPTON PLACE
 PHONE: ---
 EMAIL: ---

your kitchen your taste.
 80 SANTE DRIVE, VAUGHAN, ON L4K 3C4,
 T: 416.746.1811 F: 905.761.5901



FRIDGE WALL ELEVATION

QTH
your kitchen, your taste.
 80 SANTE DRIVE, VAUGHAN, ON L4K 3C4,
 T: 416.746.1811 F: 905.761.5901

CLIENT: ROYAL PINE HOMES
 SITE: HAMPTON PLACE
 PHONE: —
 EMAIL: —

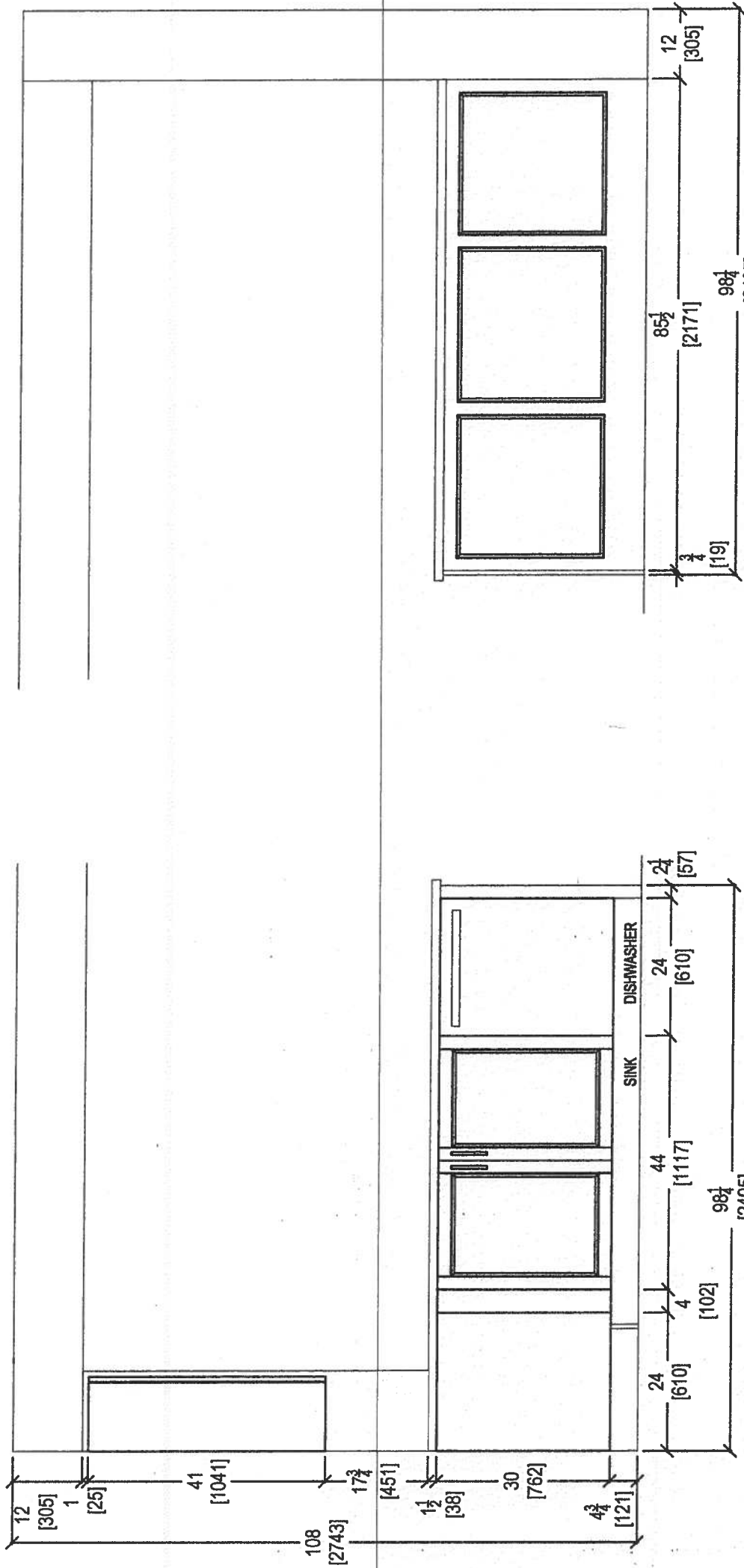
JOB NAME: UNIT 608 HMP
 DOOR STYLE: —
 FINISH: —
 SPECIES: —

ROOM: KITCHEN
 DOOR HANDLE: —
 DRW HANDLE: —
 TOP: —

DRAWN BY: SK
 SCALE: 1/2" = 1' - 0"
 DATE: REVISED: MARCH 25, 2019
 PAGE:

COMMENTS:

PLEASE NOTE ALL DIMENSIONS
 ARE NOT FINAL AND ARE
 SUBJECT TO CHANGE UPON
 FINAL SITE MEASURE



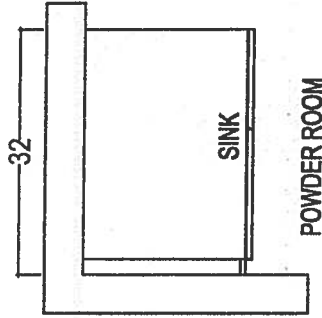
KITCHEN PENINSULA ELEVATION
FRONT VIEW

KITCHEN PENINSULA ELEVATION
REAR VIEW

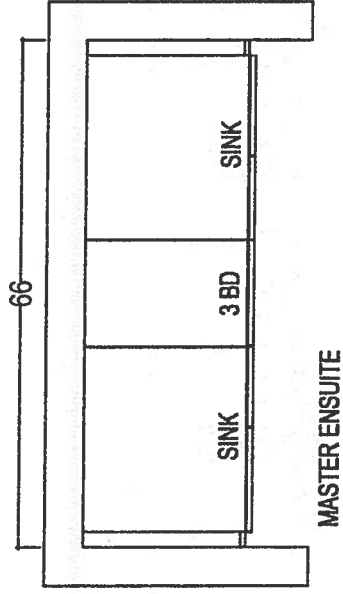


80 SANTE DRIVE, VAUGHAN, ON L4K 3C4,
T: 416.746.1811 F: 905.781.5901

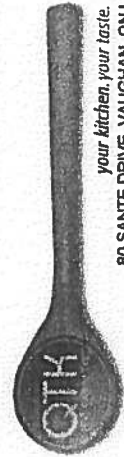
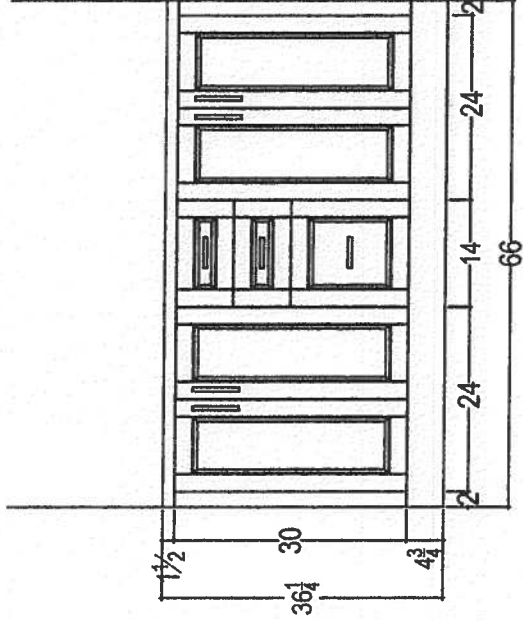
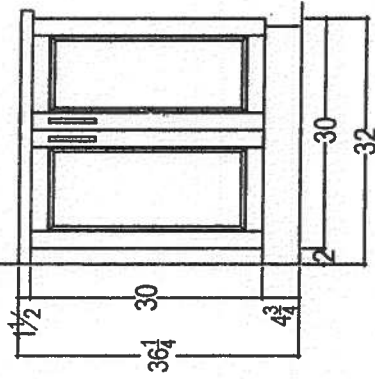
CLIENT: ROYAL PINE HOMES	JOB NAME: UNIT 608 HMP	ROOM: KITCHEN	DRAWN BY: SK	COMMENTS: PLEASE NOTE ALL DIMENSIONS ARE NOT FINAL AND ARE SUBJECT TO CHANGE UPON FINAL SITE MEASURE
SITE: HAMPTON PLACE	DOOR STYLE: --	DOOR HANDLE: --	SCALE: 1/2" = 1'-0"	
PHONE: --	FINISH: --	DRW HANDLE: --	DATE: REVISED: MARCH 25, 2019	
EMAIL: --	SPECIES: --	TOP: --	PAGE: --	



POWDER ROOM



MASTER ENSUITE



your kitchen, your taste.
 80 SANTE DRIVE, VAUGHAN, ON L4K 3C4,
 T: 416.746.1811 F: 905.761.5901

CLIENT: ROYAL PINE HOMES	JOB NAME: UNIT 609 HMP	ROOM: VANITIES	DRAWN BY: SK	COMMENTS: PLEASE NOTE ALL DIMENSIONS ARE NOT FINAL AND ARE SUBJECT TO CHANGE UPON FINAL SITE MEASURE
SITE: HAMPTON PLACE	DOOR STYLE: —	DOOR HANDLE: —	SCALE: 1/2" = 1' - 0"	
PHONE: —	FINISH: —	DRW HANDLE: —	DATE: REVISED MARCH 25, 2018	
EMAIL: —	SPECIES: —	TOP: —	PAGE:	

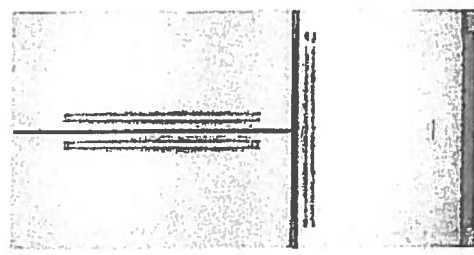


Hampton

Upgrade Package 2

KRFC302ESS

22 cu.ft. 36-Inch Width Counter Depth French Door Refrigerator with Interior Dispense



INSIDEADVANTAGE⁺



<http://www.insideadvantage.com>

Product Dimensions:

Height: 72
Width: 35 3/4
Depth: 30 1/4

Electrical Requirements:

15 Amps.

Available In:

- Stainless Steel
- Black
- White

KRFC302ESS

Key Features:

- ExtendFresh™ Temperature Management System
- Interior Water Dispenser
- Professionally-Inspired Design
- Produce Preserver
- Humidity-Controlled Crispers
- FreshChill™ Temperature-Controlled Full-Width Pantry
- Pull-Out Tri-Level Freezer Drawer
- SatinGlide® System
- LED Lighting
- Star-K Certified
- Automatic Ice Maker
- Max Cool

MADE IN AMERICA

Because Whirlpool Corporation policy includes a continuous commitment to improve our products, we reserve the right to change materials and specifications without notice. We also reserve the right to discontinue or function products without notice.
© 2013 Whirlpool Corporation. All Rights Reserved. All other trademarks are owned by their respective companies.
Created On: Wednesday, April 22, 2015 5:51:04

Hampton

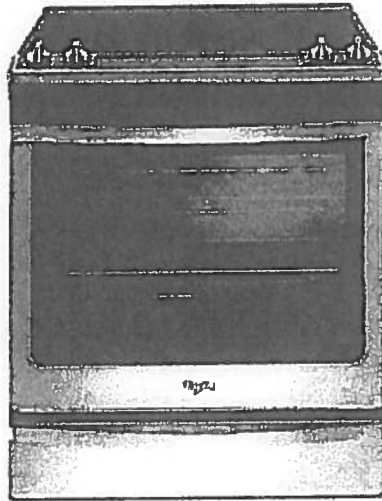
WEE745H0FS

Upgrade Package I

Whirlpool[®]

6.4 Cu. Ft. Slide-In Electric Range with True Convection

<http://www.whirlpool.com>



Key Features:

- Frozen Bake™ Technology
- True Convection Cooking
- FlexHeat™ Triple Radiant Element
- Convection Conversion
- AquaLift® Self-Cleaning Technology
- Temperature Sensor
- Rapid Preheat
- 6.4 Cu. Ft. Capacity
- Easy-Wipe Ceramic Glass Cooktop
- Large Oven Window
- Max Capacity Rack
- Hidden Bake Element

Product Dimensions:

Height: 36

Width: 29 7/8

Additional Information:

[Use And Care Guide](#)

[Dimension Guide](#)

[Installation Guide](#)

[Warranty Certificate](#)

INVESTED
IN
AMERICA



©Registered trademark/™ Trademark of Whirlpool, U.S.A. © 2018 Whirlpool Corporation. All Rights Reserved.
All other trademarks are owned by their respective companies.
Because Whirlpool Corporation policy includes a continuous commitment to improve our products, we reserve the right to change materials and specifications without notice. We also reserve the right to discontinue or transition products without notice.
Manufacturer's Suggested Retail Price (MSRP) and Minimum Advertised Price (MAP) provided for reference purposes only. Dealer alone determines advertised and retail prices.
Created On: Friday, January 27, 2017 10:48:47

Hampton Upgrade Package 1

WDTA50SAHZ

Whirlpool®

Contemporary Design. Stainless Steel Tub
Dishwasher with TotalCoverage Spray Arm

<http://www.whirlpool.com>

Key Features:

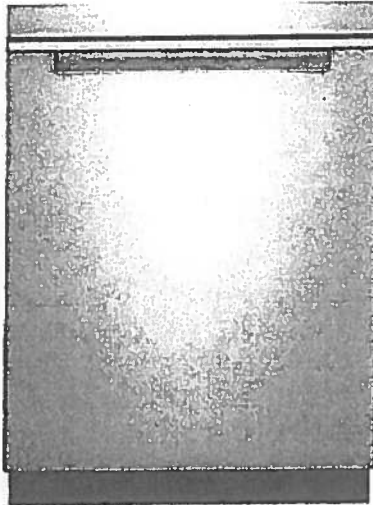
- Sensor Cycle
- TotalCoverage Spray Arm
- 1-Hour Wash Cycle
- Tap Touch Controls

Product Dimensions:

Height: 34 1/2
Width: 23 7/8
Depth: 24 1/2

Additional Information:

[Use And Care](#)
[Dimension Guide](#)
[Installation Guide](#)
[Energy Guide](#)
[Warranty](#)



Available in:

● Black

Fingerprint Resistant Sunset Bronze

Fingerprint Resistant Black Stainless

○ White

Fingerprint Resistant Stainless Steel

INVESTED
IN
AMERICA



®Registered trademark/TM Trademark of Whirlpool, U.S.A. © 2016 Whirlpool Corporation. All Rights Reserved. All other trademarks are owned by their respective companies.

Because Whirlpool Corporation policy includes a continuous commitment to improve our products, we reserve the right to change materials and specifications without notice. We also reserve the right to discontinue or transition products without notice.

Manufacturer's Suggested Retail Price (MSRP) and Minimum Advertised Price (MAP) provided for reference purposes only. Dealer alone determines advertised and retail prices.

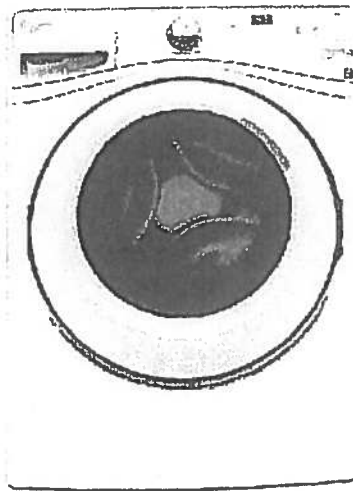
Hampton Upgrade Package I

WFW75HEFW

5 cu. ft. Front Load Washer with Precision Dispense



<http://www.whirlpool.com>



Key Features:

- Precision Dispense
- Adaptive Wash Technology
- Smooth Wave Stainless Steel Wash Basket
- 4.5 cu. ft. Capacity
- ENERGY STAR® Qualified

Product Dimensions:

Height: 39 3/4

Width: 27

Depth: 33 5/16

Electrical Requirements:

15 or 20. 120 V.

Additional Information:

[Use And Care Guide](#)

[Dimension Guide](#)

[Installation Guide](#)

[Energy Guide](#)

[Warranty Certificate](#)

INVESTED
IN
AMERICA



©Registered trademark/™ Trademark of Whirlpool, U.S.A. © 2013 Whirlpool Corporation. All Rights Reserved.
All other trademarks are owned by their respective companies.
Because Whirlpool Corporation policy includes a continuous commitment to improve our products, we reserve the right to change materials and specifications without notice. We also reserve the right to discontinue or transition products without notice.
Manufacturer's Suggested Retail Price (MSRP) and Minimum Advertised Price (MAP) provided for reference purposes only. Dealer alone determines advertised and retail prices.
Created On: Wednesday, March 23, 2016 11:51:03

Hampton Upgrade Package 1

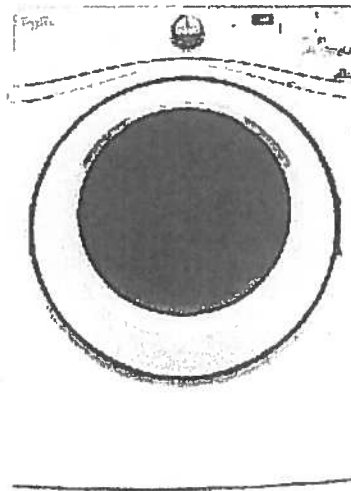
YWED75HEFW

7.5 cu. ft. Duet® High Efficiency Front Load Electric Dryer with ENERGY STAR®

MSRP: \$0.00

Whirlpool®

<http://www.whirlpool.com>



Key Features:

- Advanced Moisture Sensing System
- Quad Baffles
- Tap Touch Controls with Memory
- EcoBoost™ Option
- Wrinkle Shield™ Plus Option
- Undercounter Installation
- 7.4 Cu. Ft. Capacity
- ENERGY STAR® Qualified

Product Dimensions:

Height: 39

Width: 27

Depth: 31

Additional Information:

[Use And Care](#)

[Installation Guide](#)

[Warranty](#)

Available in:

White

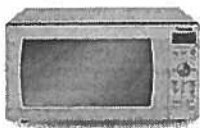
INVESTED
IN
AMERICA



®Registered trademark/™ Trademark of Whirlpool, U.S.A. © 2016 Whirlpool Corporation. All Rights Reserved. All other trademarks are owned by their respective companies.

Because Whirlpool Corporation policy includes a continuous commitment to improve our products, we reserve the right to change materials and specifications without notice. We also reserve the right to discontinue or transition products without notice.

Manufacturer's Suggested Retail Price (MSRP) and Minimum Advertised Price (MAP) provided for reference purposes only. Dealer alone determines advertised and retail prices.



Microwave Ovens Countertop

Countertop NN-SD786S

\$209 + \$275 trim kit

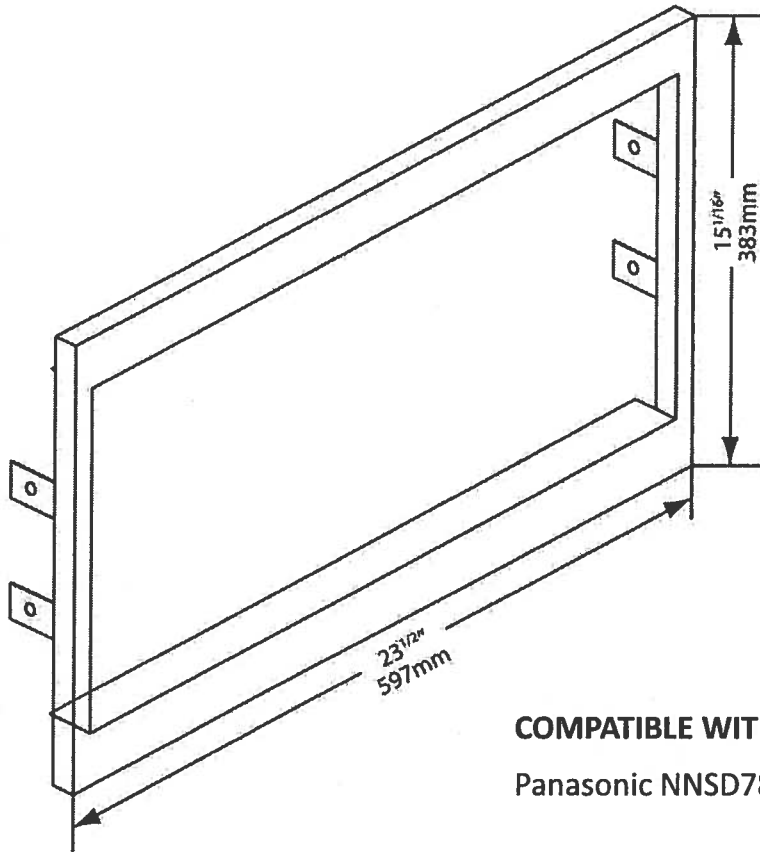
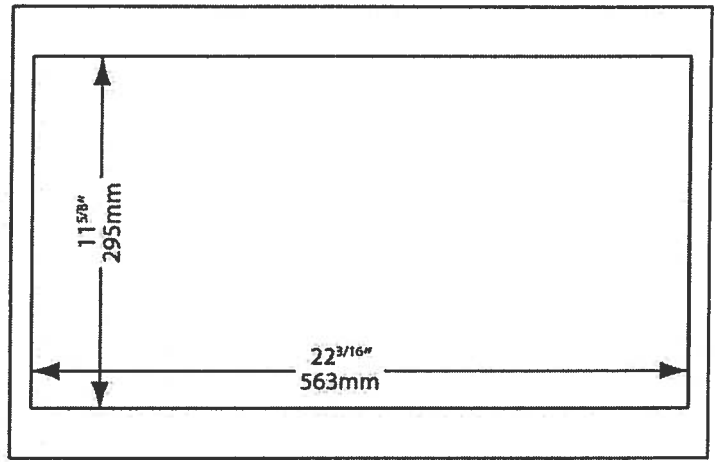
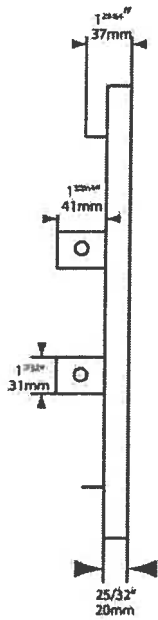
MODEL & SIZE	Model Number	NN-SD786S
	Type	Family-size
	Installation	Counter Top or Built-in
	Oven Capacity	1.6 cu. ft.
	Cooking Power	1,200 Watt
	Turntable Diameter	15"
PANASONIC TECHNOLOGY	Panasonic Inverter®	Cyclonic Inverter®
	Sensor	Prestige® Genius®
DESIGN	Colour	Fingerprint Resistant Stainless Steel
	Control Panel	"Flashing Blue" Ring Dial with Button Panel
	Display Panel	"Blue" 6-Digit Expanded Display
	Cooking Options	Microwave Cooking
STYLE	Door Front	Stainless Steel
	Door Window	Reflective Mirror Finish
	Exterior Wrap	Stainless Steel
	Door Release	Push Button
	Oven Interior	Epoxy
PERFORMANCE	Power Settings	10 levels
	Multi-stage Cooking	3 stages
	Automatic Turntable	Revolving & Removable

		Menu Action Screen	Interactive Multi-Lingual
PROGRAMMABLE FEATURES		Sensor Cook	Sensor 20 Menu Items
		Sensor Reheat	yes
		More / Less Control	yes
		Inverter® Turbo Defrost	yes
		Keep Warm Button	yes
		Popcorn Button	yes
		Quick Minute	yes
		Delay Start	yes
		Delay Timer	yes
SPECIFICATIONS		Power Requirements	120 V 60 Hz; 12.7 A, 1,460 Watt; AC only
		Cavity Dimensions (W x D x H)	418 × 470 × 229 mm 16.4 x 18.5 x 9 inch
		Unit Dimensions (W x D x H)	556 × 506 × 303 mm 21.9 x 19.9 x 12 inch
		Carton Dimensions (W x D x H)	625 × 533 × 375 mm (24-5/8" × 21" × 14-3/4")
		Net Weight	Approx. 14.3 kg (32 lb)
		Gross Weight	17.7 kg (39 lb)
ACCESSORIES	TRIM KITS	27" Model Number	NN-TK722S (stainless)
		30" Model Number	NN-TK732S (stainless)

Copyright ©Panasonic Canada Inc.

MWTK60

24" Stainless Steel Microwave Trim Kit



COMPATIBLE WITH:

Panasonic NNSD786, NNSD797 microwaves

Specifications are subject to change without notice
V1.0

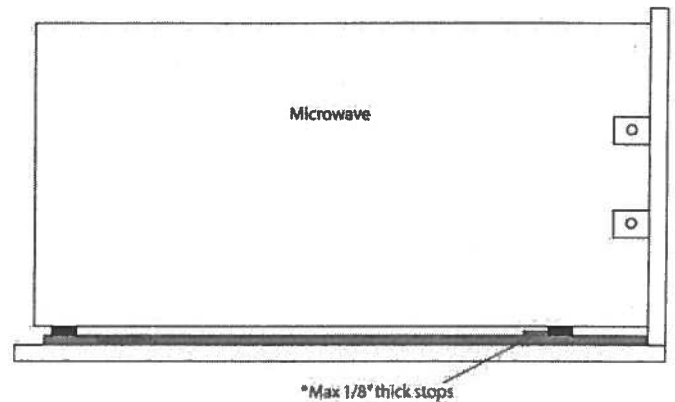
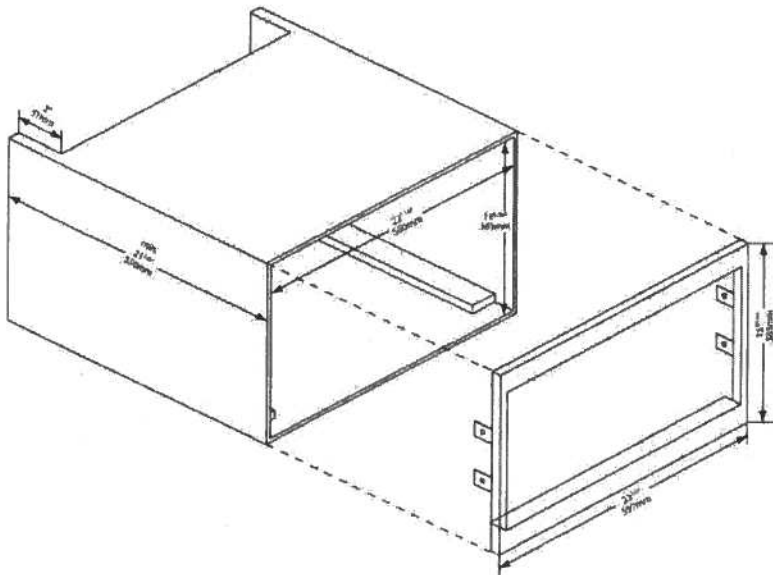
Porter & Charles

MWTK60

24" Stainless Steel Microwave Trim Kit

VOID CUT-OUT

1. Unscrew the 4 screws holding the 2 pieces of wood in place, and retain the screws
2. Hold the MWTK-60 in place and position the 2 pieces of wood against the cabinet sides and against the MWTK. Remove the MWTK
3. Screw the 2 pieces of wood onto the base of the cabinet. The wooden strips should touch the inside of the front of the MWTK-60, and be aligned against the side gables.
(wooden stripes 18" = 46cm apart)
4. Being careful not to scratch the microwave door, lift the microwave onto the wooden strips, and move it back about 2 inches.
5. Place the MWTK-60 into position. Use the 4 screws and screw them through the flanges into the side gables.
6. Pull the microwave forward, and align the front of the microwave with the front of the MWTK-60
7. To stop the microwave from sliding backwards whilst opening it, it might be necessary to attach a piece of wood behind the feet of the microwave, on the wooden supports
8. Air must be able to flow from the microwave upwards and into the room, or roof space. Failure to comply will void the manufacturer's warranty on the microwave oven.



U.S.A. ([EN \(/en_us/\)](#)) - [Select Country \(/en_us/country/\)](#)

[Catalogues \(/en_us/catalog/\)](#) [Downloads \(/en_us/downloads/\)](#) [Reserved area \(http://portal.falmecc.com/\)](#) [Contacts \(/en_us/contacts/\)](#)

Search

falmecc
(/en_us/)

[PRODUCTS](#) [COMPANY \(/EN_US/COMPANY/\)](#) [FALMECC WORLD \(/EN_US/FALMECC_WORLD/\)](#)

[NEWS & PRESS \(/EN_US/NEWS/\)](#)

[HOME \(/EN_US/\)](#) > [HOODS \(/EN_US/TIPOLOGY/HOODS-1/\)](#) >

[POTENZA \(/EN_US/TIPOLOGY/HOODS-1/COLLECTION/POTENZA-15/\)](#) > [VULCANO](#)

[SHARE THIS PRODUCT](#)



VULCANO

- > Scotch brite stainless steel (AISI 304)
- > LED lighting
- > Metallic grease filter, removable and washable
- > Optional charcoal filter
- > Labyrinth filter

VARIANTS

FPVUL30W3SS /
Vulcano Wall 30"
(76 cm) 280 CFM

FPVUX36W6SS /
VulcanoXL Wall 36"
(90cm) 600 CFM

FPVUL24W3SS /
Vulcano Wall 24"
(60 cm) 280 CFM

FPVUX30W6SS /
VulcanoXL Wall 30"
(76 cm) 600 CFM

TECHNICAL FEATURES

Installation type

Wall

Dimensions

76 cm / 30 in

Features

Scotch brite stainless steel (AISI 304)

Electronic control

Metallic grease filter, removable and washable

Optional charcoal filter

Labyrinth filter

Finish

Scotch brite stainless steel (AISI 304)

Motor

450 m³/h / 280 cfm

Type of control

Electronic control

Speed settings

Led 2x1,2 W - 3200 K

ACCESSOIRES

KACL.510#I

Extension H700 - Wall

KACL.512#I

Extension H960 - Wall

KACL.815

Protective cleaning cloths for stainless steel (box 10 pcs)

103050107

Square charcoal filter - Type 3

CONSUMPTION

Maximum consumption

150 W

Current

120V 60Hz

Frequency

PACKAGING

Gross weight

20 Kg

Net weight

15 Kg

Volumes

0.30 m³

Packaging size

Length: 995 mm

Height: 595 mm

Depth: 510 mm

X

COOKIE POLICY

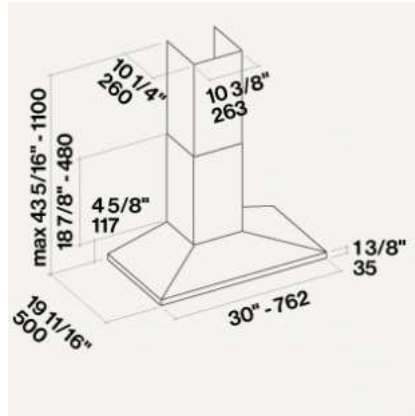
We use cookies on "www.falmeccnorthamerica.com". If you continue to use "www.falmeccnorthamerica.com" you will be agreeing to the website [General Terms and Conditions of Use](#), [Privacy Policy](#) and the use of cookies while using the website. To find out more about cookies and how to change your preferences please see our [Cookie Policy](#) (http://www.falmeccnorthamerica.com/en_us/cookie/).

DOWNLOAD TECHNICAL SHEET

Minimum distance
Electric hob: 52 cm
Gas hob: 60 cm

Download pdf (<https://falmec-catprod1.falmec.com/technical-specifications/515/en-US>)

[View all downloads](#)



GALLERY



(/artcims/admin/upBoxImages/3238/1492233205.jpg)

DOWNLOADS

Instruction manual
wall
(.pdf - 2.71Mb)
(<https://falmec-catprod1.falmec.com/files/3738.pdf>)