

UNITED ENGINEERING INC
Mechanical and Electrical Consulting Engineers

3645 Keele St. #105
Toronto, ON, M3J 1M6
Email: info@u-eng.ca
T: (416) 398-1999
F: (416) 398-1933

SITE INSTRUCTION

PROJECT: HAMPTON MANOR
25 BAKER HILL BLVD
STOUFFVILLE, ONTARIO

PROJECT NO #: 14-016

CONTRACT: Electrical

DATE December 21, 2018

SITE INSTRUCTION NO.: E-34

THIS SITE INSTRUCTION IS NOT TO BE CONSTRUED AS A CHANGE IN THE CONTRACT PRICE, BUT IS ISSUED FOR CLARIFICATION ONLY. IF A CHANGE IN CONTRACT PRICE IS PERCEIVED, PROVIDE AN ITEMIZED BREAKDOWN OF ANY EXTRAS OR CREDITS WITHIN SEVEN (7) WORKING DAYS.

PURPOSE: Revise to suit site condition.

**1.0 Reference Drawings E-7A (7th Floor Plan A - Electrical) Issued
E-7B (7th Floor Plan B - Electrical)**

1.1 Add: GFI receptacles in the ceiling as shown, connect to panel P.

PREPARED BY:

Susan Pan

Susan Pan
Electrical Department

ISSUED TO ROYAL PINE HOMES,
Cinzia Caruso, Cinzia@royalpinehomes.com;
Vince Staffieri, vince@royalpinehomes.com
FOR DISTRIBUTION TO ALL AFFECTED PARTIES.

16

15

EY1

14

13

12

11

10

8

7

5

4

3

1

A

Aa

Ba

C

E

F

G

H

J

K

Kb

P

Ta

Tb

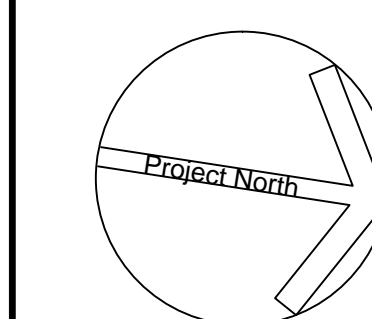
Td

U

FOR CONTINUATION REFER TO DWG. E-7B

GENERAL KEY NOTES:

- ◆ JUNCTION BOX FOR TRI-SORT GARBAGE SYSTEM
- ◆ TOP OF STAIR SMOKE DETECTOR AND SPEAKER C/W FIRE ALARM ZONE
- ◆ FOR ALL BALCONY RECEPTACLES ON 6TH AND 7TH FLOOR TO BE 1.0M AWAY FROM GAS CONNECTION.
- ◆ DOOR HOLD OPEN DEVICE INTERCONNECTED TO FIRE ALARM SYSTEM TO RELEASE UPON ACTIVATION OF FIRE ALARM SYSTEM INTERCONNECTED TO LOCALIZED SMOKE DETECTORS.
- ◆ CONFIRM ALL DIMENSIONS OF LIGHTING FIXTURES ON SITE WITH CLIENT PRIOR TO ROUGH-IN.



United Engineering Inc.
Mechanical Electrical Consulting Engineers
3345 Reele Street, Suite 105,
Toronto, Ontario, M3J 1W6
Tel: (416) 398 1999, Fax: (416) 398 1933

TITLE
**7TH FLOOR PLAN - A
ELECTRICAL**

PROJECT
**PROPOSED RESIDENTIAL DEVELOPMENT
25 BAKER HILL BLVD.**

**ROYAL PINE HOMES
STOUFFVILLE, ONTARIO**

DRAWN CM	CHECKED MG	SCALE 1:75
DATE SEPT. 2015	PROJECT 14-016	DRAWING E-7A OF 12

NO.	BY	DESCRIPTION	DATE
13	SP	REVISED AS PER SI E-34	2018-12-21
12	SP	REVISED AS PER SI E-27	2018-07-12
11	CM	REVISED AS PER SI E-14	2017-11-17
10	CM	REVISED AS PER SI E-10	2017-09-12
09	CM	REVISED AS PER SI E-4	2017-08-17
08	CM	REVISED AS PER SI E-3	2017-08-11
07	CM	ISSUED FOR CONSTRUCTION	2017-08-09
06	CM	PROGRESS FOR CONSTRUCTION	2017-07-18
05	CM	ISSUED FOR PERMIT	2016-12-28
04	CM	REVISED AS PER ADD E-1	2016-12-12
03	CM	REVISED AS PER SI E-2	2016-10-04
02	CM	REVISED AS PER ESA COMMENTS AND FOR CLARIFICATION	2016-05-19
01	CM	ISSUED FOR TENDER	2016-03-15

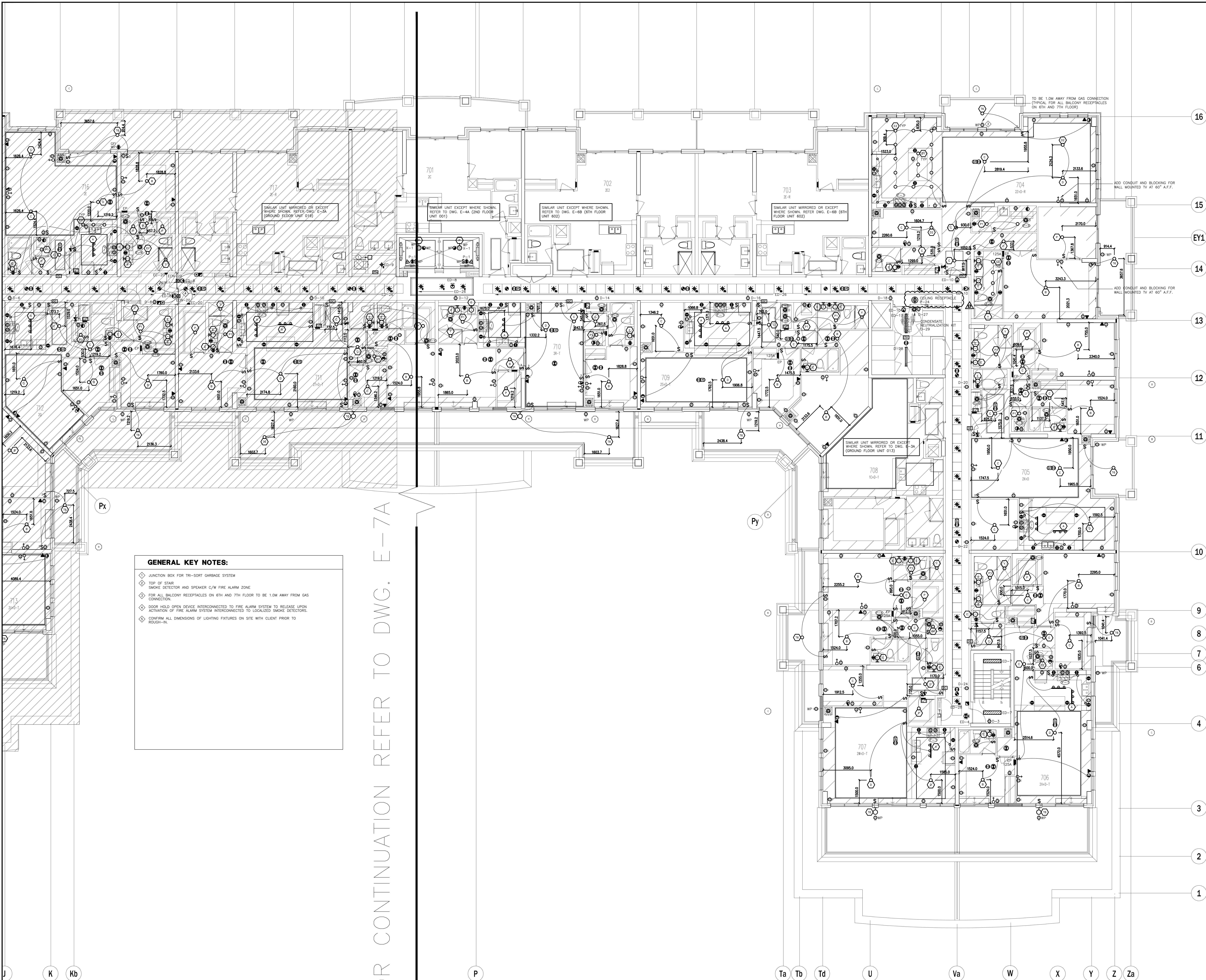
REVISIONS

This drawing, is an instrument of service, is provided by and is the property of United Engineering Inc. The contractor must verify and accept responsibility for all dimensions and conditions on site and must notify United Engineering Inc. of any discrepancy before proceeding.

United Engineering Inc. is not responsible for the accuracy of Architectural, structural, interior design, etc. on this drawing.

Refer to the appropriate trade drawings before proceeding with any work. Installation must conform to all applicable codes and requirements of the authorities having jurisdiction.

This drawing is not to be scaled, all symbols are graphic representations only.



NO.	BY	DESCRIPTION	DATE
13	SP	REVISED AS PER SI E-34	2018-12-21
12	SP	REVISED AS PER SI E-23	2018-06-08
11	SP	REVISED AS PER SI E-18	2018-03-08
10	CM	REVISED AS PER SI E-10	2017-09-12
09	CM	REVISED AS PER SI E-4	2017-08-17
08	CM	REVISED AS PER SI E-3	2017-08-11
07	CM	ISSUED FOR CONSTRUCTION	2017-08-09
06	CM	PROGRESS FOR CONSTRUCTION	2017-07-18
05	CM	ISSUED FOR PERMIT	2016-12-28
04	CM	REVISED AS PER ADD E-1	2016-12-12
03	CM	REVISED AS PER SI E-2	2016-10-04
02	CM	REVISED AS PER ESA COMMENTS AND FOR CLARIFICATION	2016-05-19
01	CM	ISSUED FOR TENDER	2016-03-15

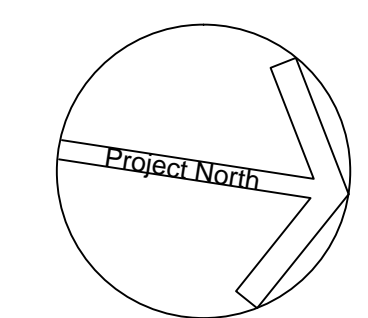
REVISIONS

This drawing is an instrument of service, is provided by and is the property of United Engineering Inc. The contractor must verify and accept responsibility for all dimensions and conditions on site and must notify United Engineering Inc. of any discrepancy before proceeding.

United Engineering Inc. is not responsible for the accuracy of Architectural, structural, interior design, etc. on this drawing.

Refer to the appropriate trade drawings before proceeding with any work. Installation must conform to all applicable codes and requirements of the authorities having jurisdiction.

This drawing is not to be scaled, all symbols are graphic representations only.



United Engineering Inc.
Mechanical Electrical Consulting Engineers
3345 Reele Street, Suite 105,
Toronto, Ontario, M3J 1M6
Tel: (416) 398 1999, Fax: (416) 398 1933

TITLE	7TH FLOOR PLAN - B ELECTRICAL		
PROJECT	PROPOSED RESIDENTIAL DEVELOPMENT 25 BAKER HILL BLVD.		
	ROYAL PINE HOMES STOUFFVILLE, ONTARIO		
DRAWN	CM	CHECKED	MG
DATE	SEPT. 2015	PROJECT	14-016
		SCALE	1:75
		DRAWING	E-7B
		OF	12