



## Site Instruction

Royal Pine Homes  
3550 Langstaff Road, Suite 200  
Woodbridge, Ontario  
L4L 9G3

SI 27

PROJECT	: Hampton Manor
PROJECT No	: 1136.13
DATE	: October 30, 2018

Attn: Vince Staffieri

Site instructions/memos and Addendums are issued only for the purpose of recording any clarification or interpretation of the contract documents or giving direction on problems resulting from field conditions. These memos are subject to the provisions of the contract documents and unless reviewed with and authorized by the Client, will not affect the contract. Should the Contractor require a change in the contract price or project schedule, he shall submit to the Client, prior to commencement of work outlined in this memo, an itemized proposal for approval.

Title: Firestopping details

### A801 – Plan Details

- Indicating firestopping on details

### A802 – Plan Details

- Indicating firestopping on details

Reason: **As per Architect's Instruction**

References: **A801 and A802.**

**GRAZIANI + CORAZZA**  
ARCHITECTS INC

**G. Colangelo** Diploma Arch. Technology  
Associate, Director of Contract Documents

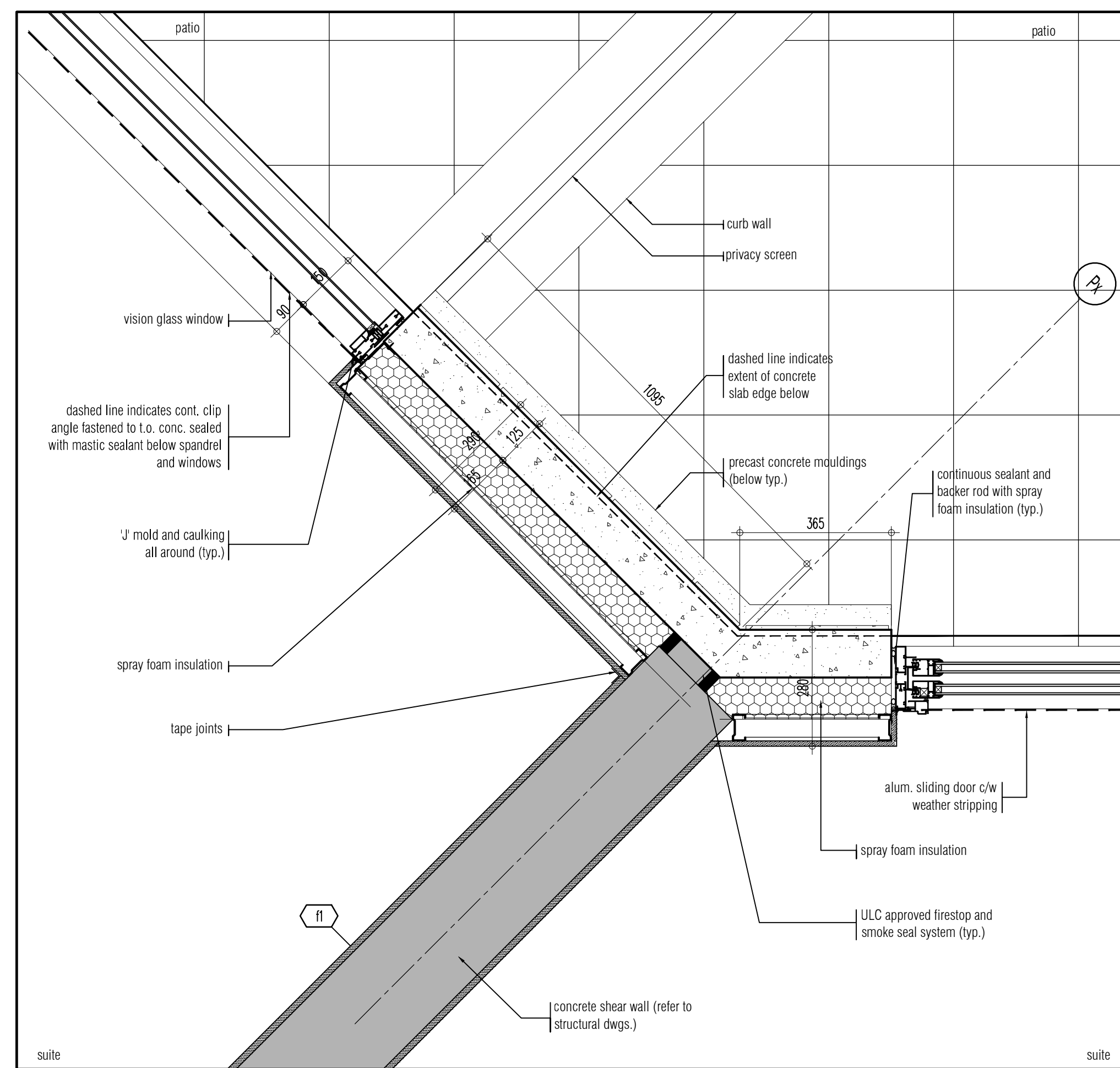
### Distribution:

Royal Pine Homes  
Dineen Construction  
Dineen Construction  
Dineen Construction

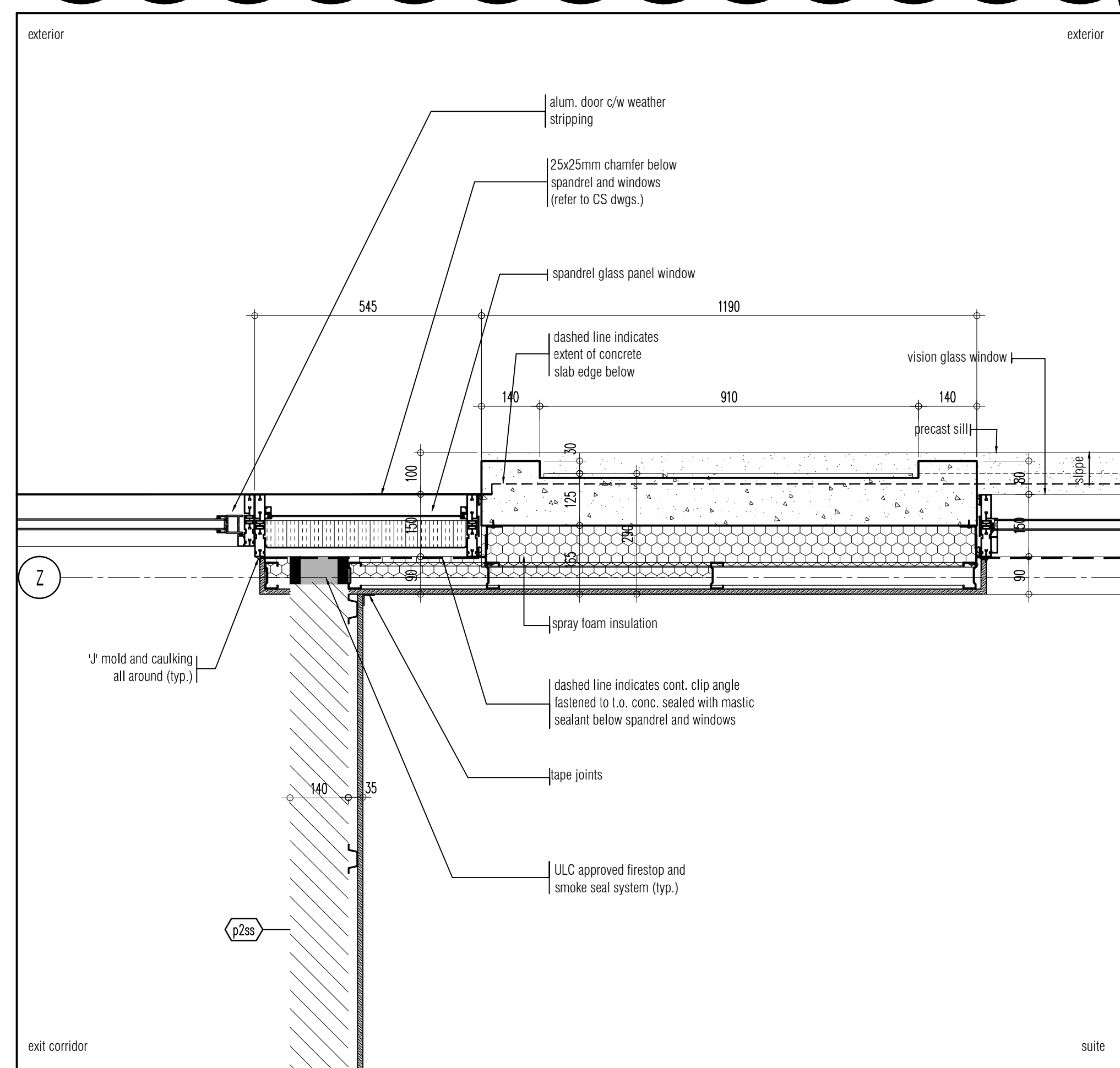
Cinzia Caruso  
Dominic Salvati  
Jeff Ellis  
Eric Wright

cinzia@royalpinehomes.com  
dsalvati@dineen.com  
jellis@dineen.com  
rwright@dineen.com

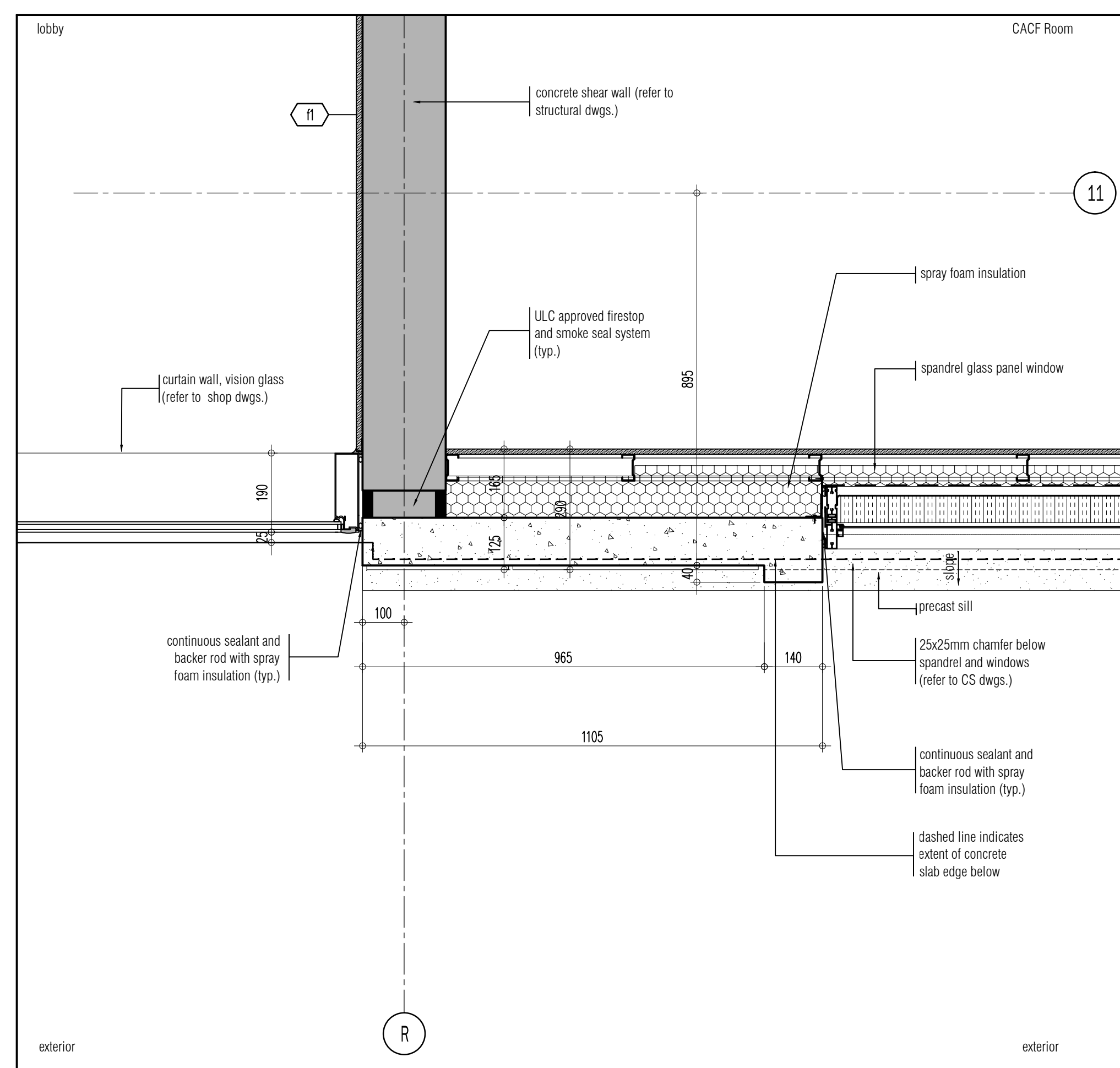
S127



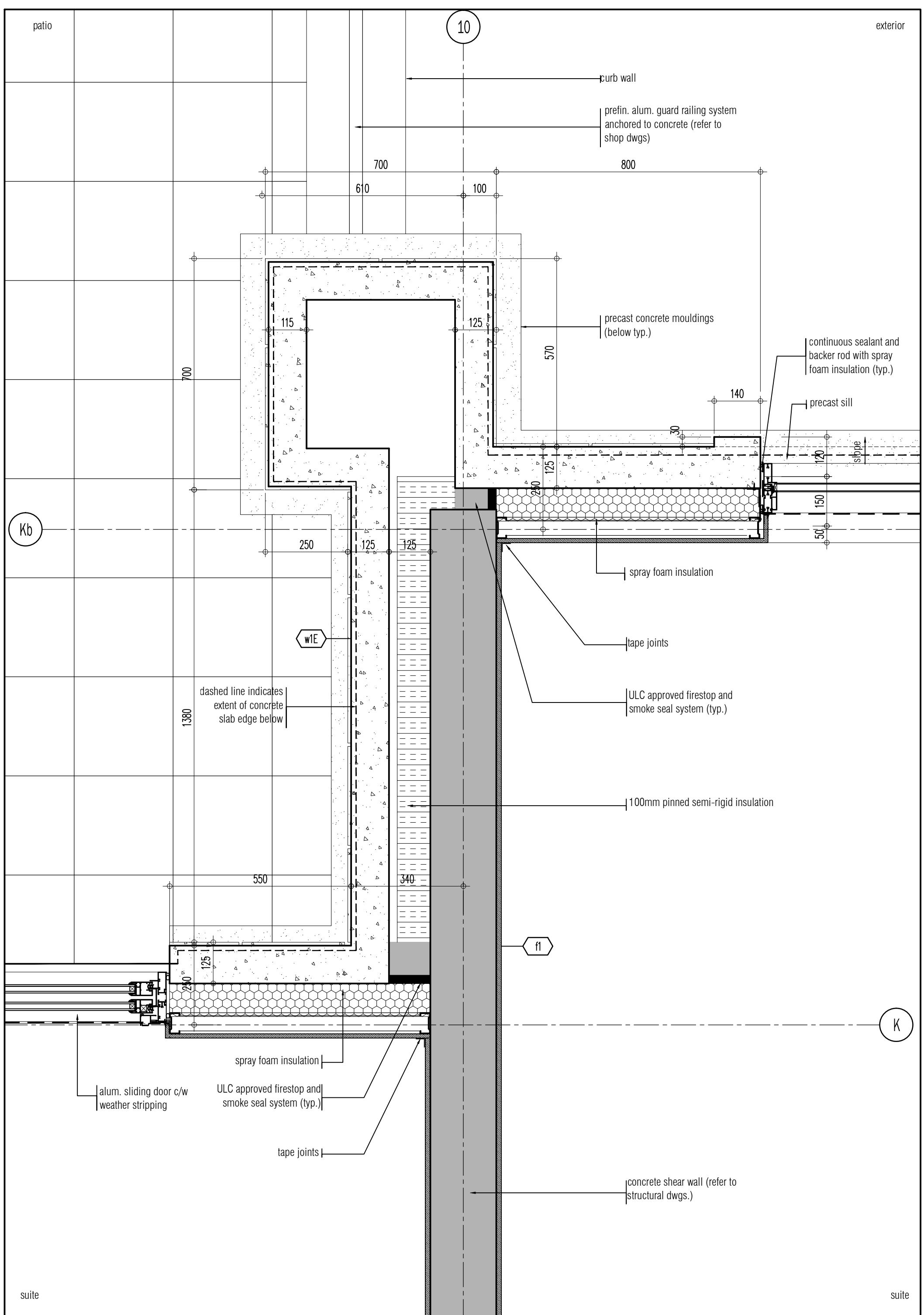
typical plan detail at precast on 45° angle (10)  
SCALE - 1:10 A801



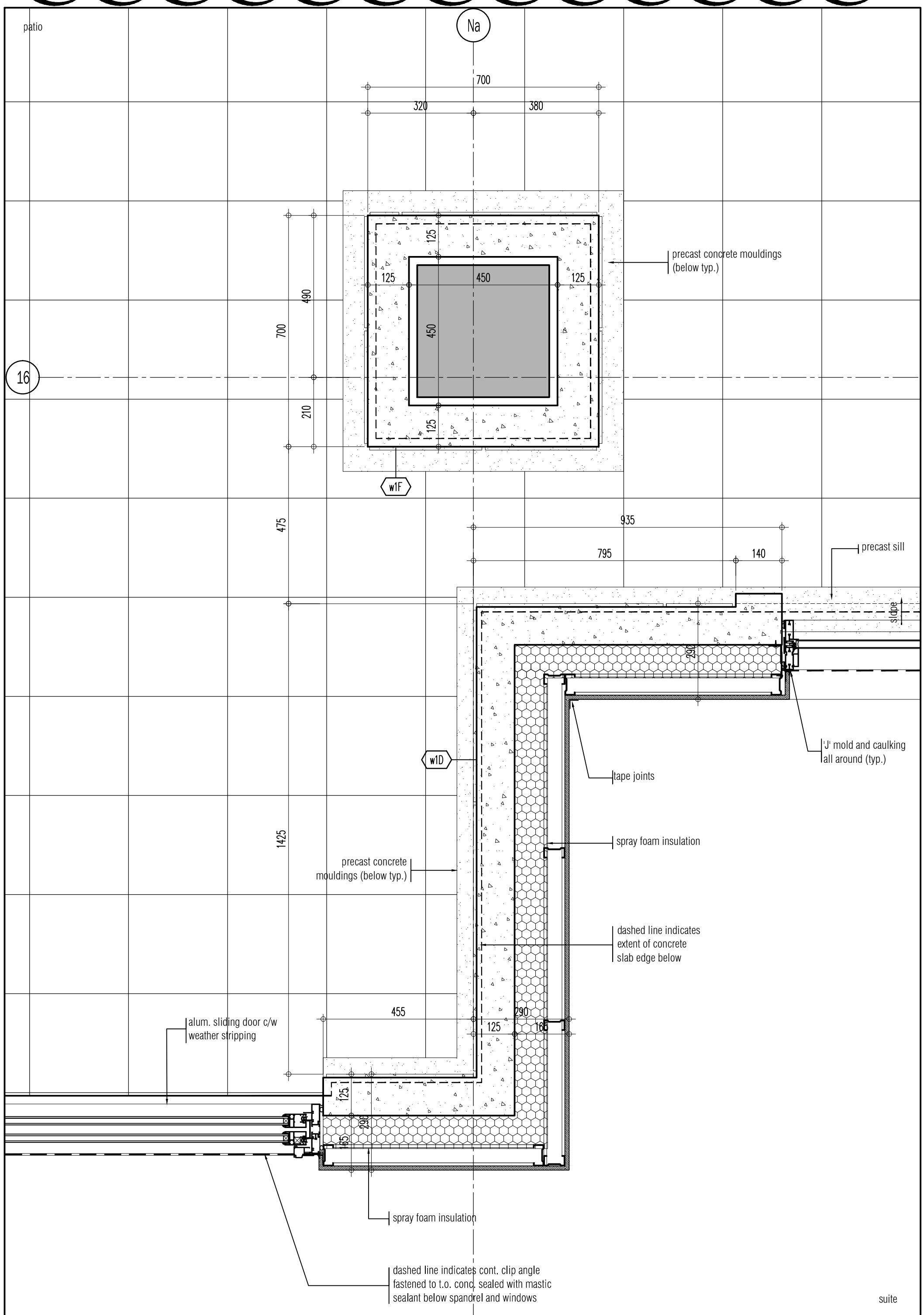
plan detail at exit corridor (9)  
SCALE - 1:10 A801



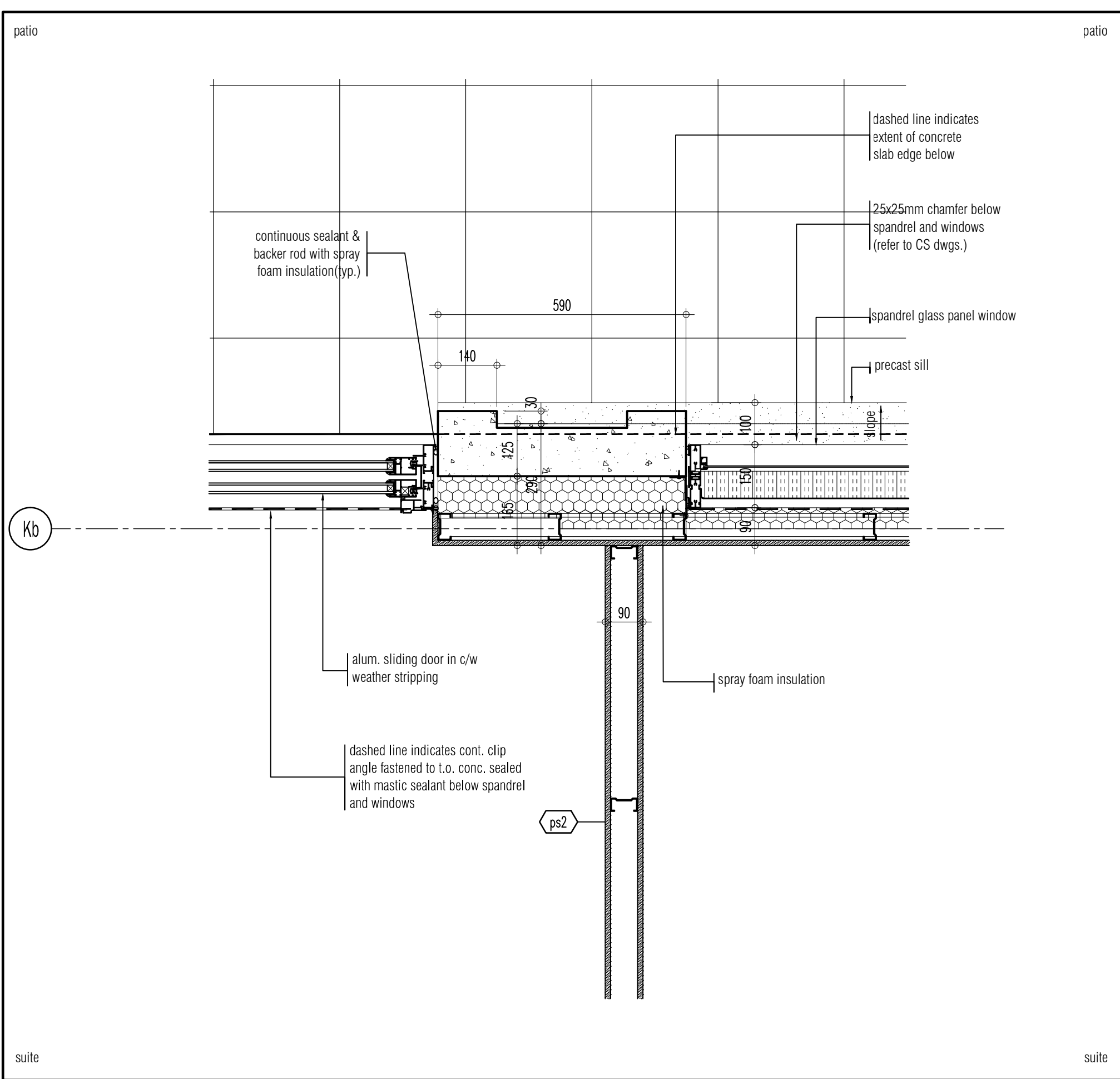
plan detail at precast and curtain wall (8)  
SCALE - 1:10 A801



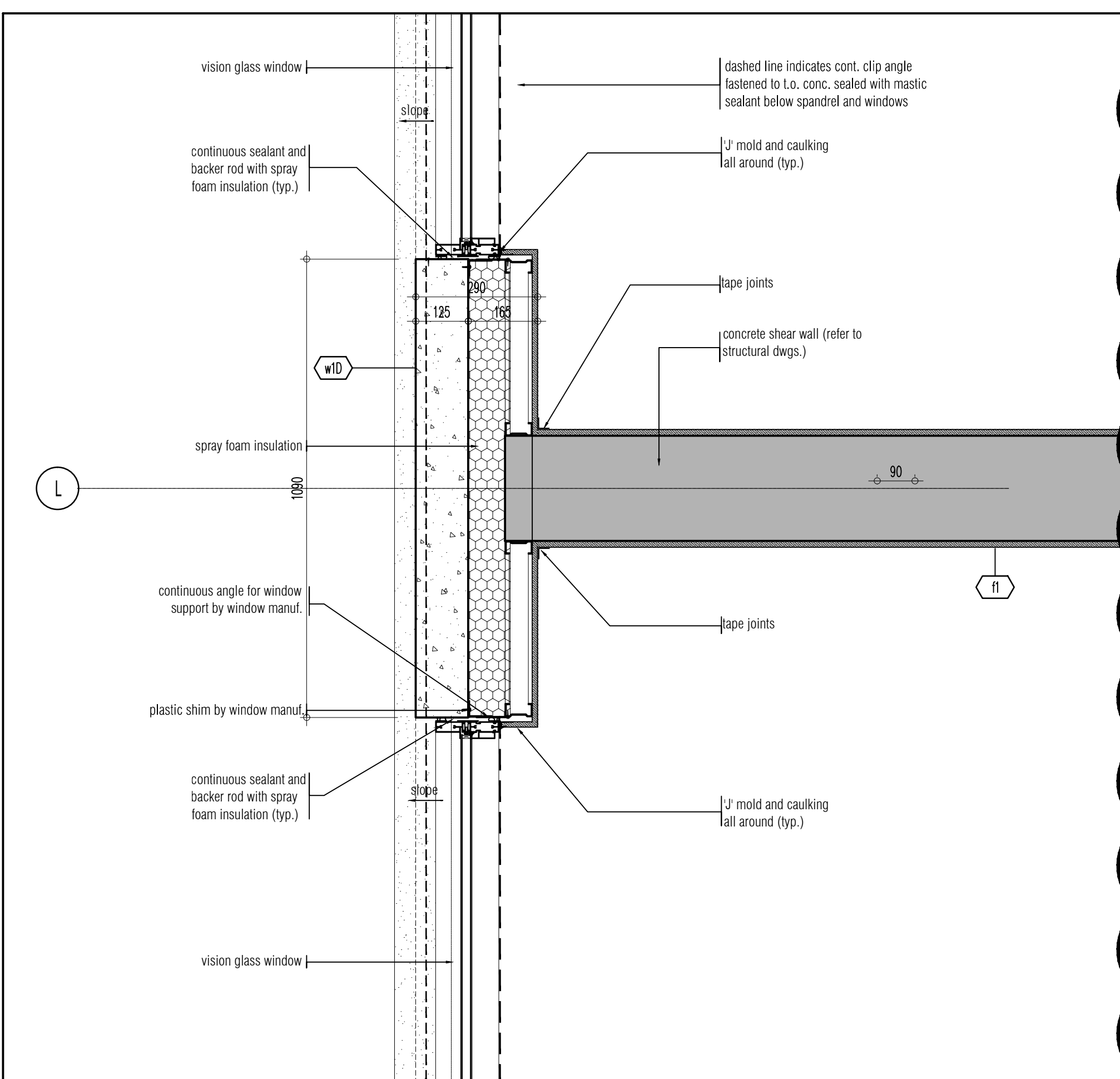
corner detail at ground floor precast and concrete shear wall (7)  
SCALE - 1:10 A801



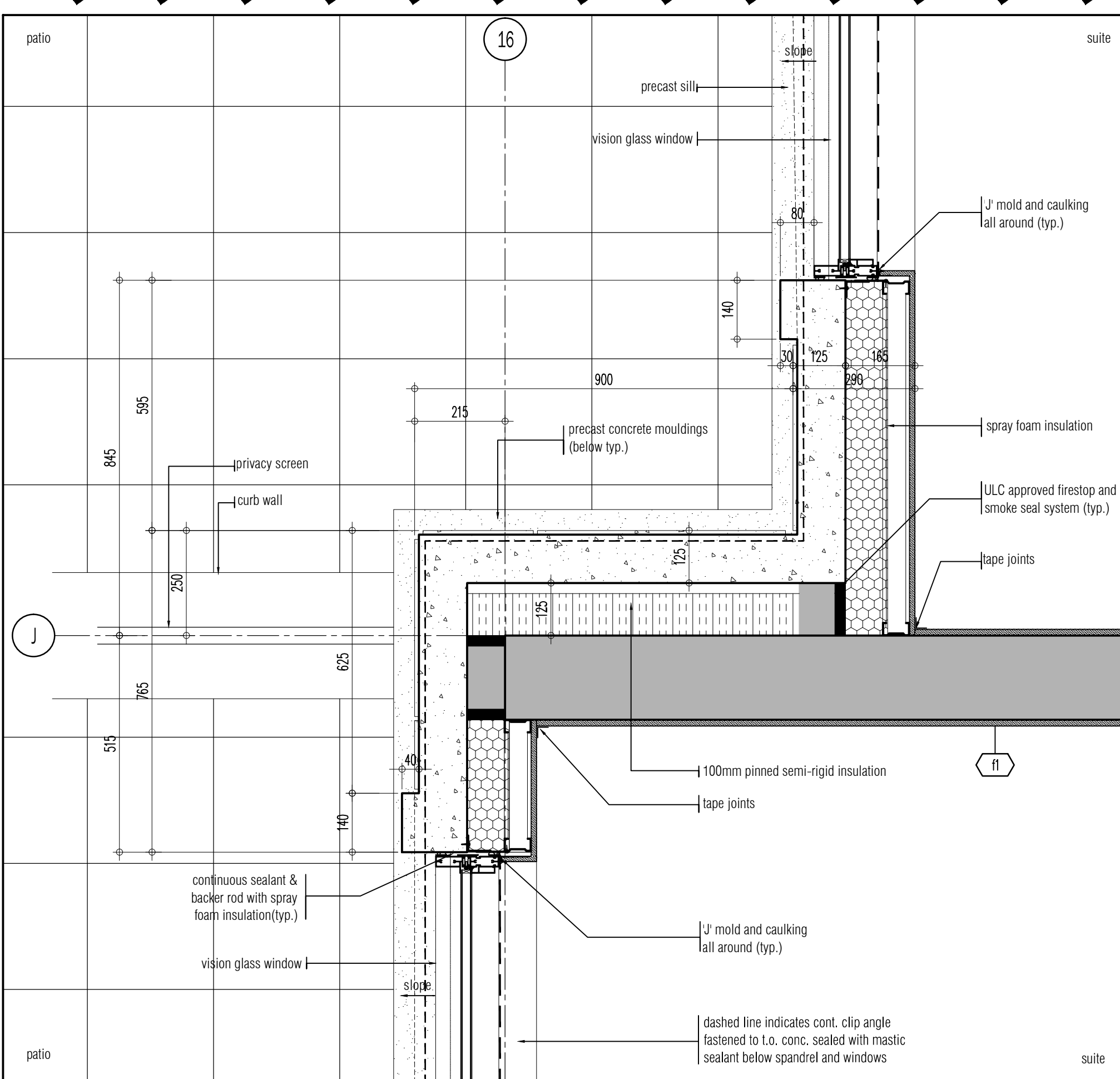
corner detail at precast (6)  
SCALE - 1:10 A801



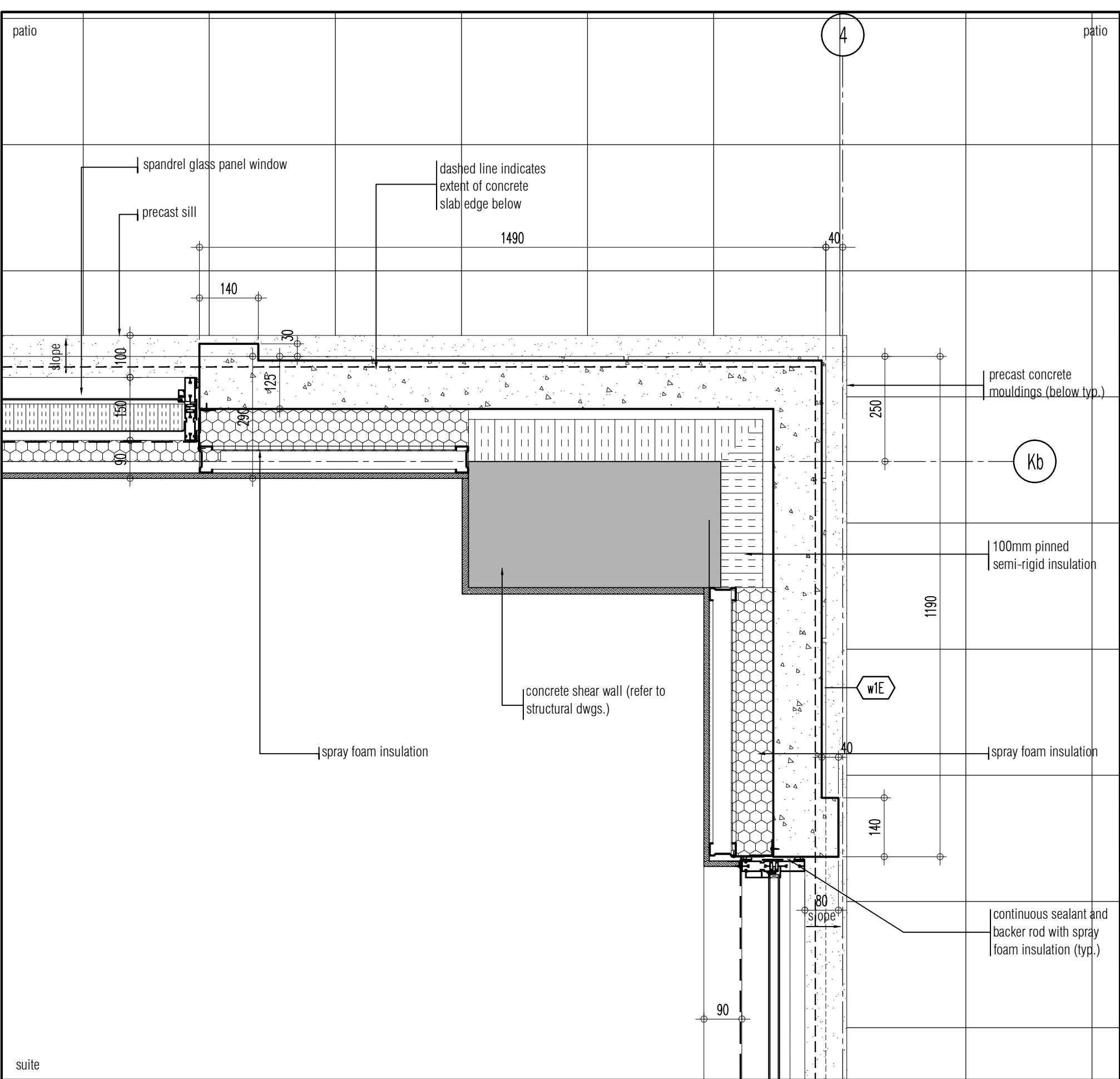
plan detail at precast (5)  
SCALE - 1:10 A801



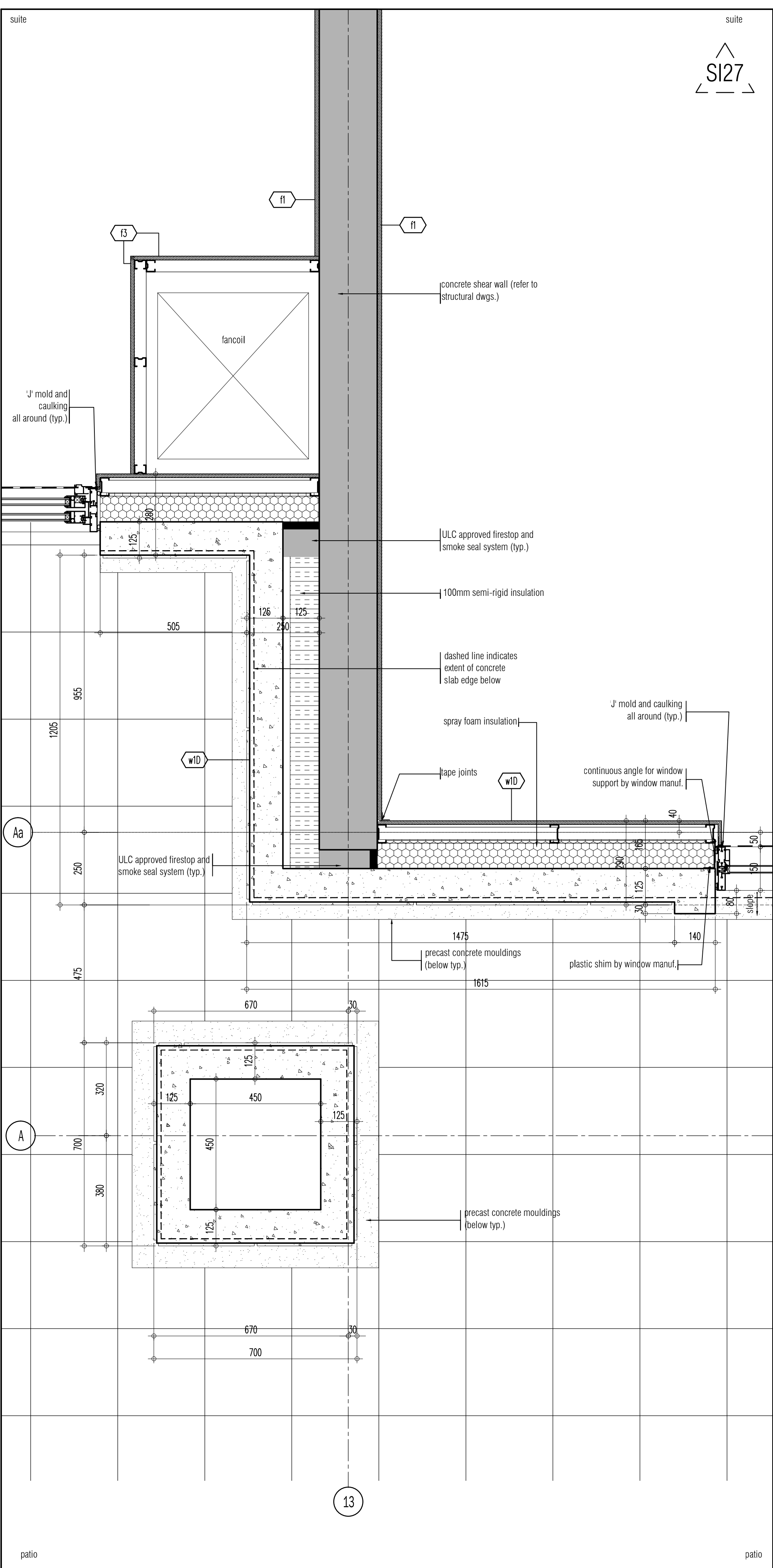
plan detail at precast (4)  
SCALE - 1:10 A801



precast detail @ concrete shear wall (3)  
SCALE - 1:10 A801



typical corner detail at precast (2)  
SCALE - 1:10 A801



corner detail at ground precast (1)  
SCALE - 1:10 A801

This drawing, as an instrument of service, is provided by and is the property of GRAZIANI CORAZZA ARCHITECTS INC. The architect must verify and accept responsibility for all dimensions and conditions on site and must notify Client - General Architect, Inc. of any variations from the approved information. Project - General Architect, Inc. is not responsible for the accuracy of any structural, mechanical, electrical, etc., engineering information shown on this drawing. Note: The architectural drawings are only intended to be used for construction purposes and are not intended to be used for any other purpose. Construction must conform to all applicable codes and requirements of the authorities having jurisdiction. Other otherwise noted, no investigation has been undertaken or reported on by this office in regard to the environmental condition of this site. This drawing is not to be used for construction purposes until counterchecked by the architect.

This drawing is not to be scaled. All architectural symbols indicated on this drawing are generic representations only.

01. FEB.28.2014	issued to city for SPA	B.G.
02. JUL.9.2014	re-issued to city for SPA	B.G.
03. SEP.11.2014	re-issued to city for SPA	B.G.
04. JAN.15.2015	re-issued to city for SPA	B.G.
05. MAR.15.2015	re-issued to lender	B.G.
06. DEC.28.2016	issued for building permit	B.G.
07. MAY.10.2017	re-issued for building permit	B.G.
08. MAY.10.2017	issued for Footings and Foundation Permit	B.G.
10. JULY.19.2017	Progress for Construction	B.G.
11. AUG.09.2017	issued for Construction	B.G.
12. OCT.25.2017	Revision to Envelope	B.G.
13. APR.04.2018	Re-issued for Building Permit	B.G.

02. OCT.30.2018 S127 PRESTRESSING DETAIL B.G.

01. OCT.25.2017 S108 ENVELOPE/SPRAY FOAM INSULATION B.G.

issued for revisions

**GRAZIANI CORAZZA ARCHITECTS INC.**

1327 Sheppard Ave. E. Suite 102, Richmond Hill, Ontario L4B 1C1  
Phone: 905.705.2621 Fax: 905.705.2644 [www.gra-arch.com](http://www.gra-arch.com)

PROPOSED RESIDENTIAL DEVELOPMENT

**25 BAKER HILL BLVD.**

ROYAL PINES HOMES

STOUFFVILLE ONTARIO

Project Architect: B. GRAZIANI

Assistant Designer: R. LINCOLN

Drawn By: S.G.

Checked By: G. COLANGELO/D.BIASE

Plot Date: Jul. 4, 2018

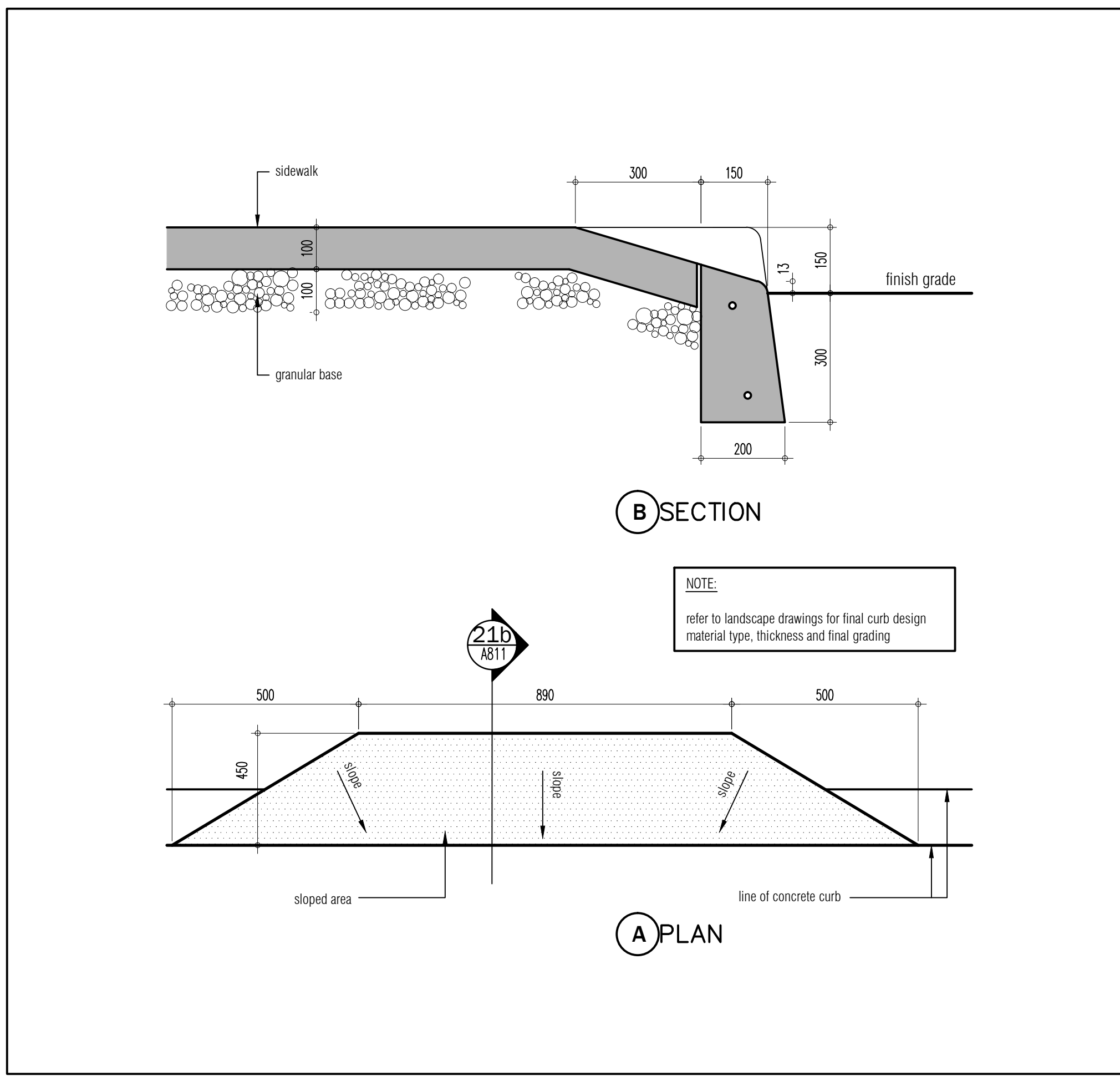
Job #: 1136.1.3

Typical Details

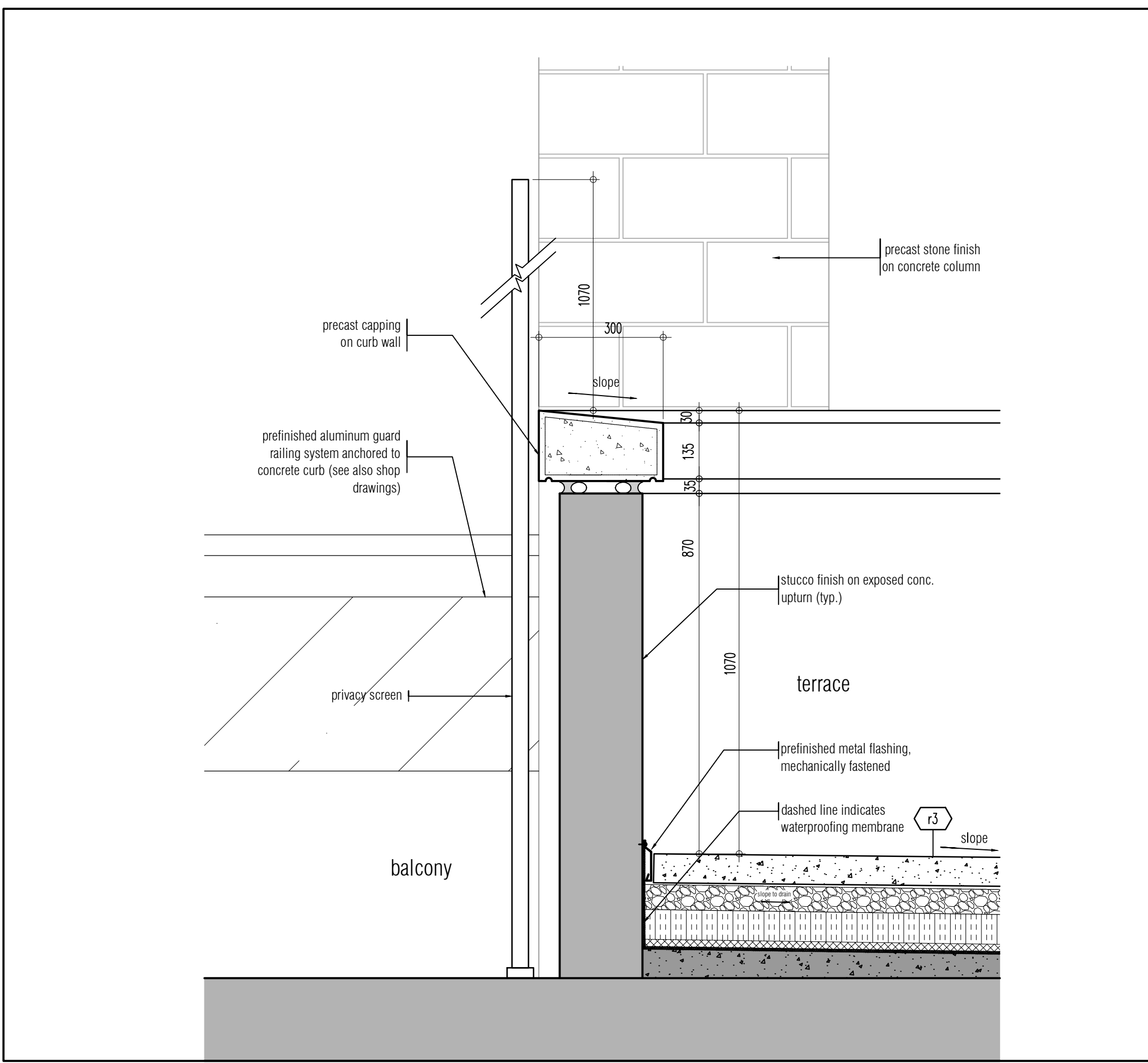
as noted A801

TITLEBLOCK SIZE: 915 x 1400

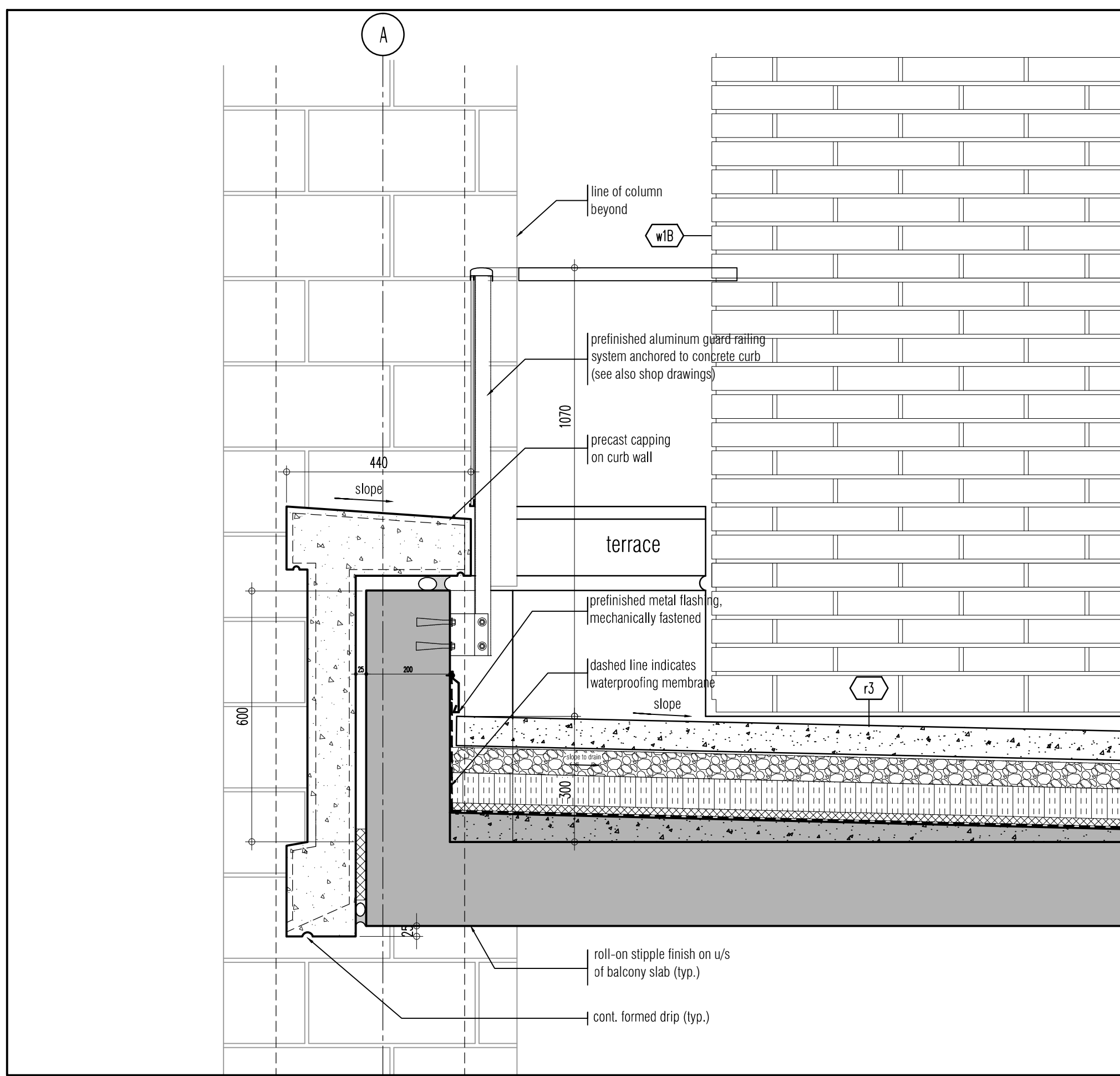




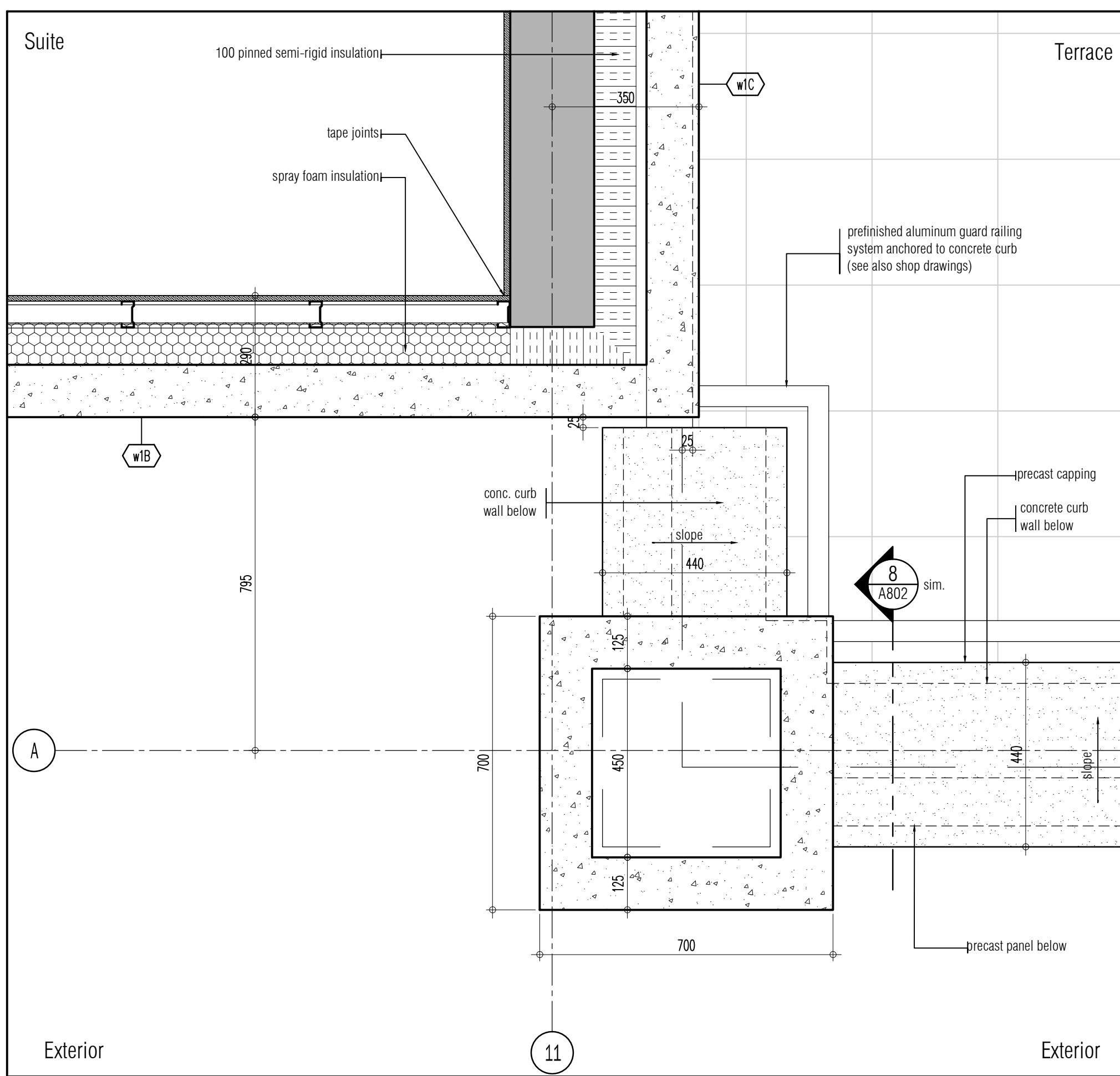
drop curb-plan & section detail 9  
SCALE - 1/10 A802



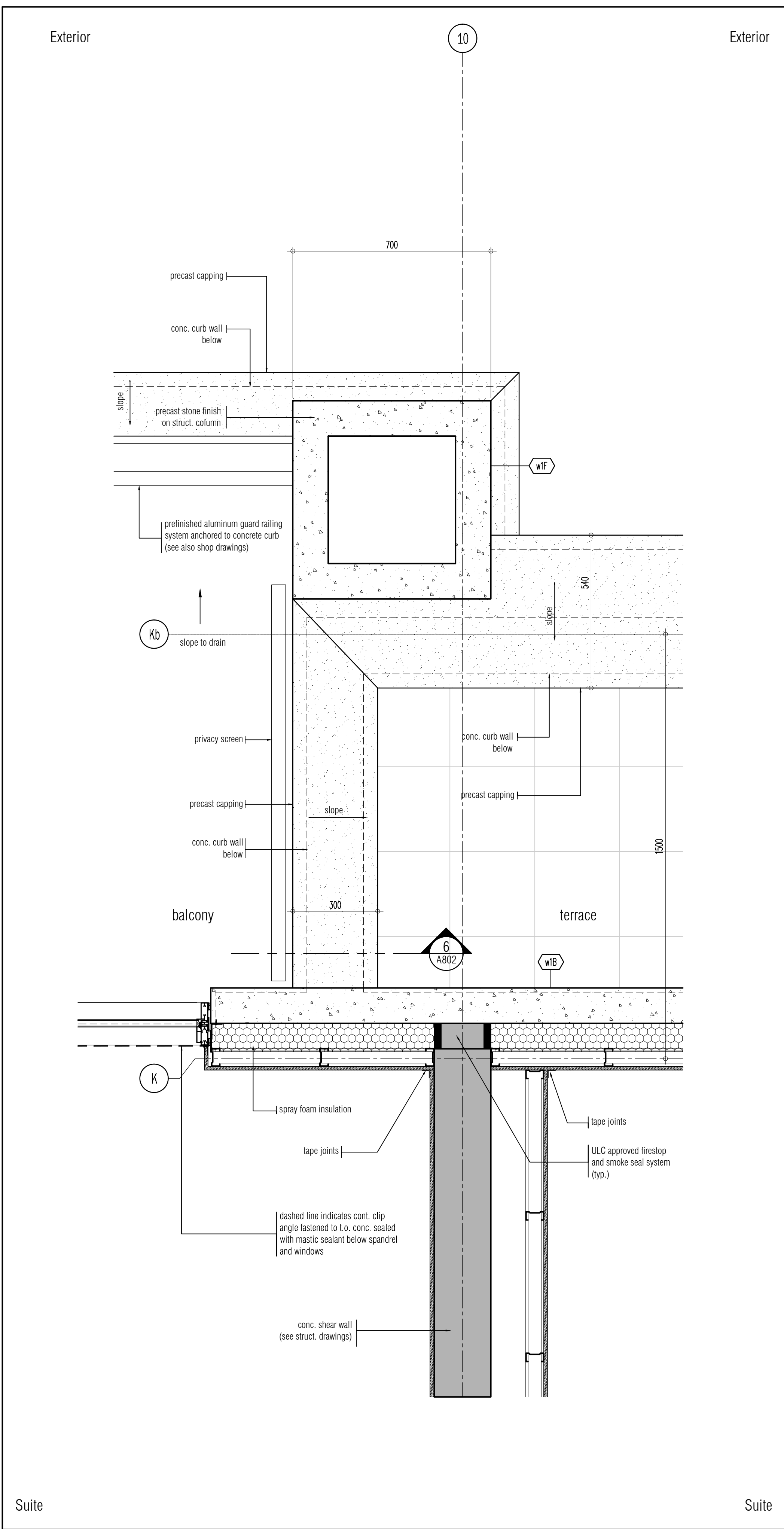
drop curb detail 6  
SCALE - 1/10 A802



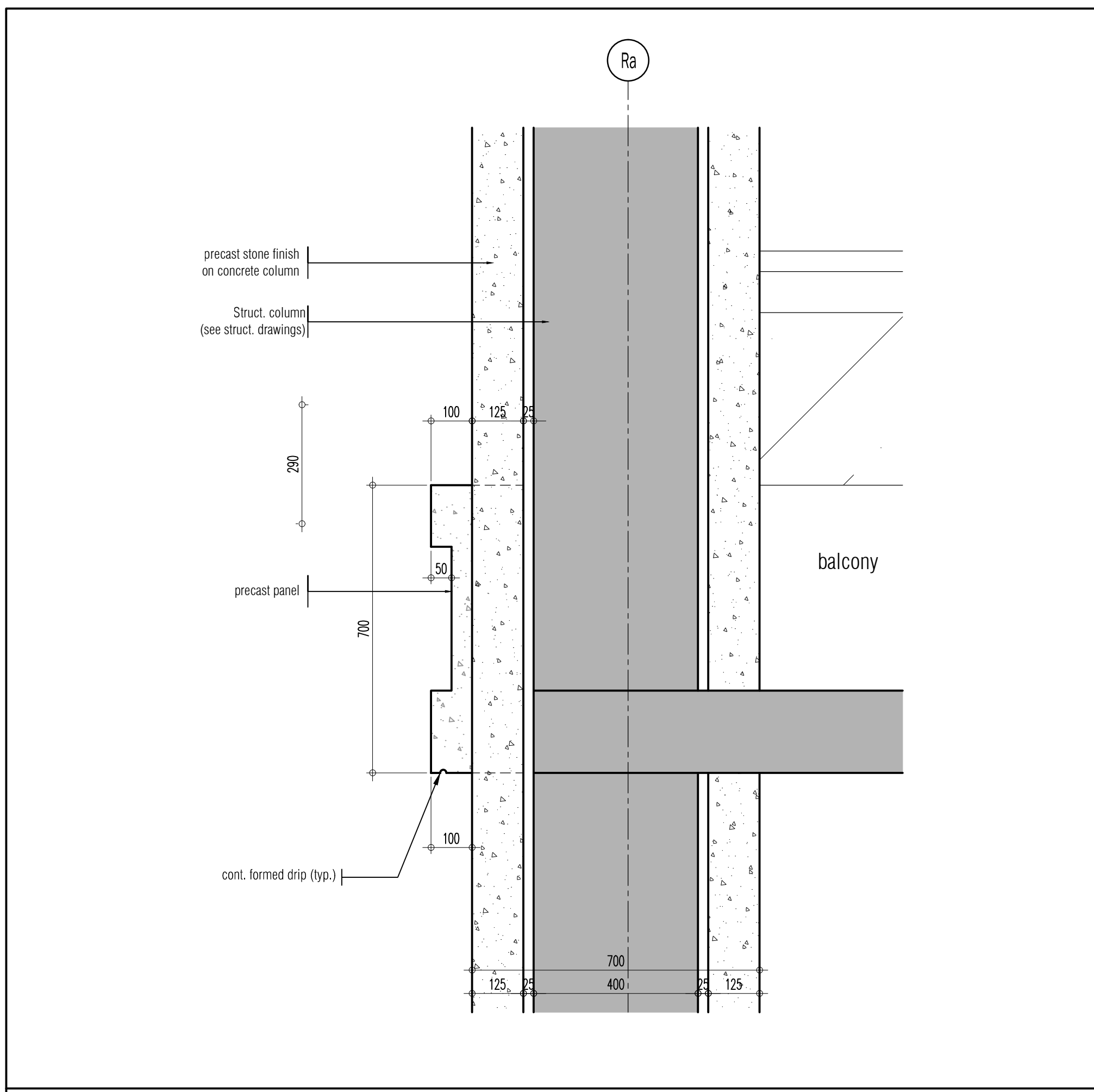
section detail @ 7th floor terrace 8  
SCALE - 1/10 A802



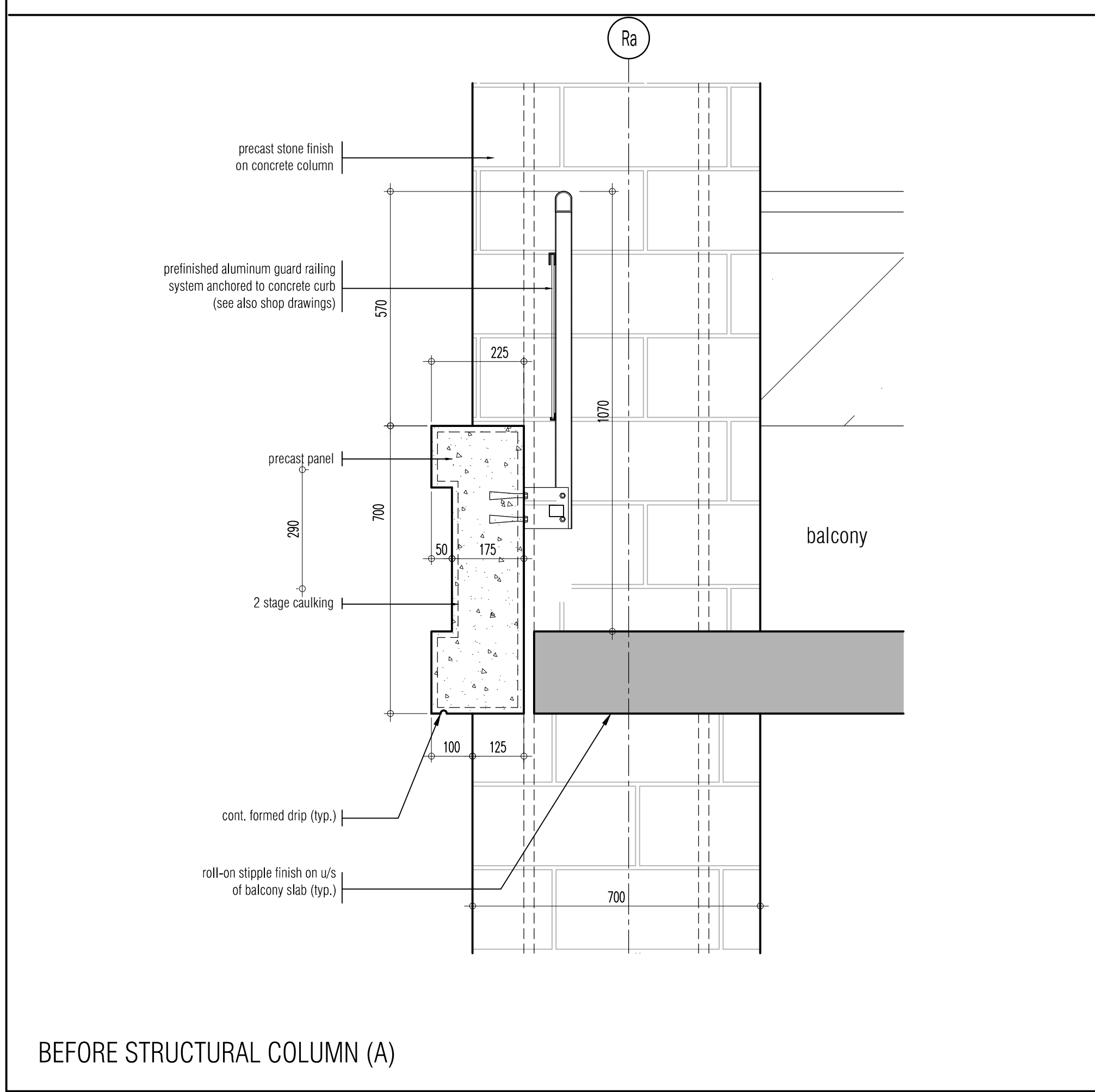
precast corner detail @ 7th floor terrace 7  
SCALE - 1/10 A802



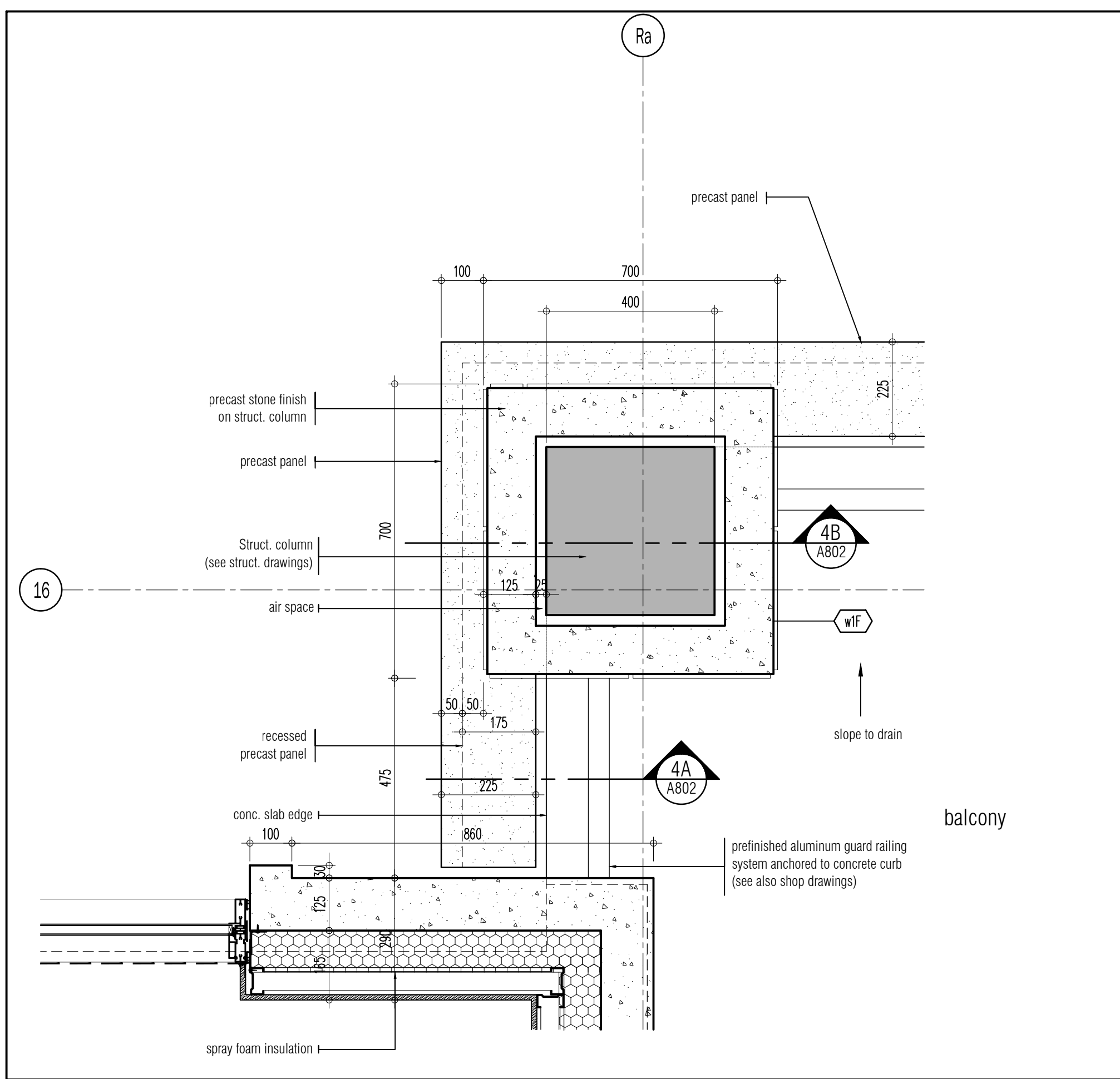
precast band detail @ balcony-typical 5  
SCALE - 1/10 A802



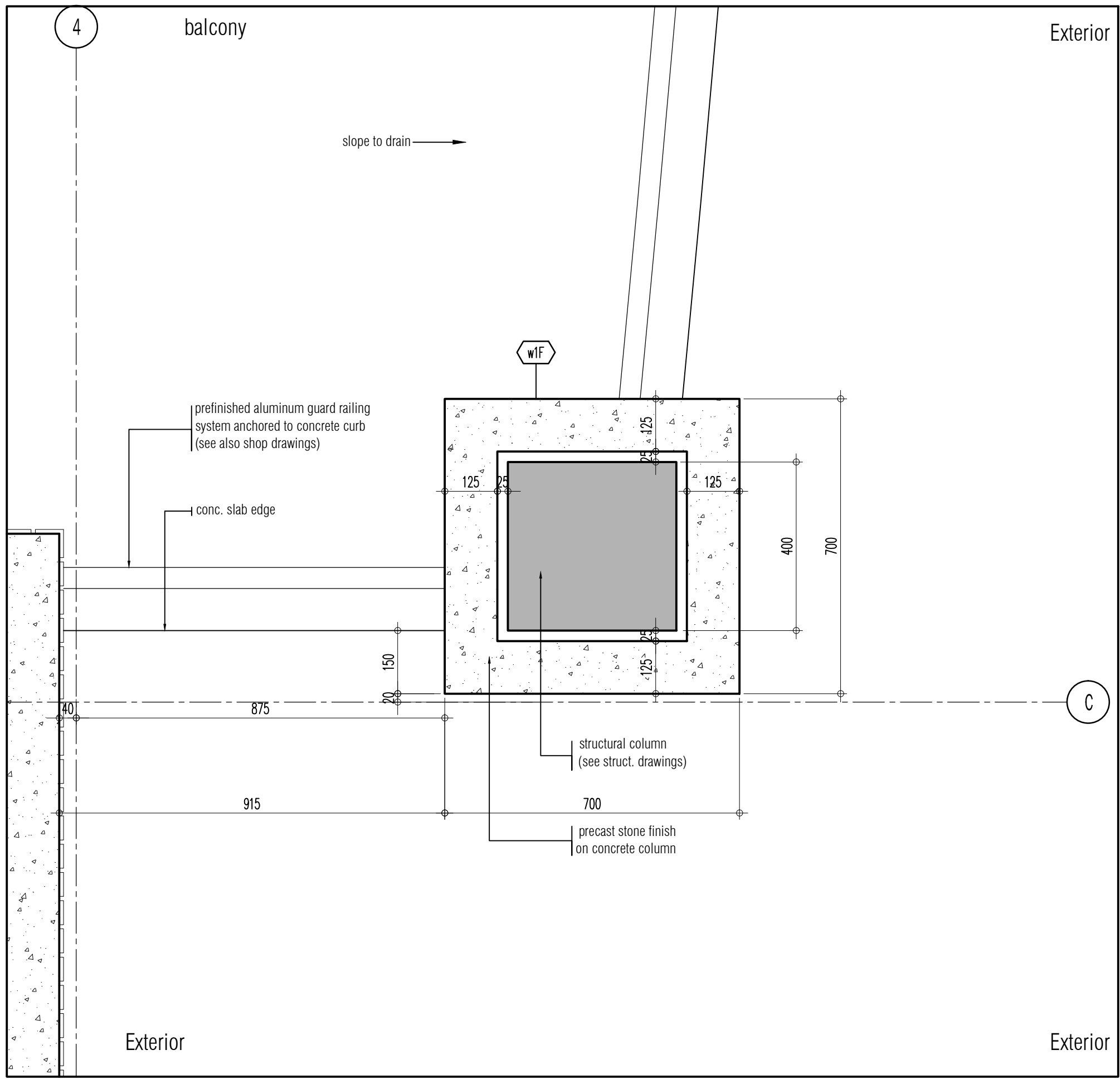
THROUGH STRUCTURAL COLUMN (B)



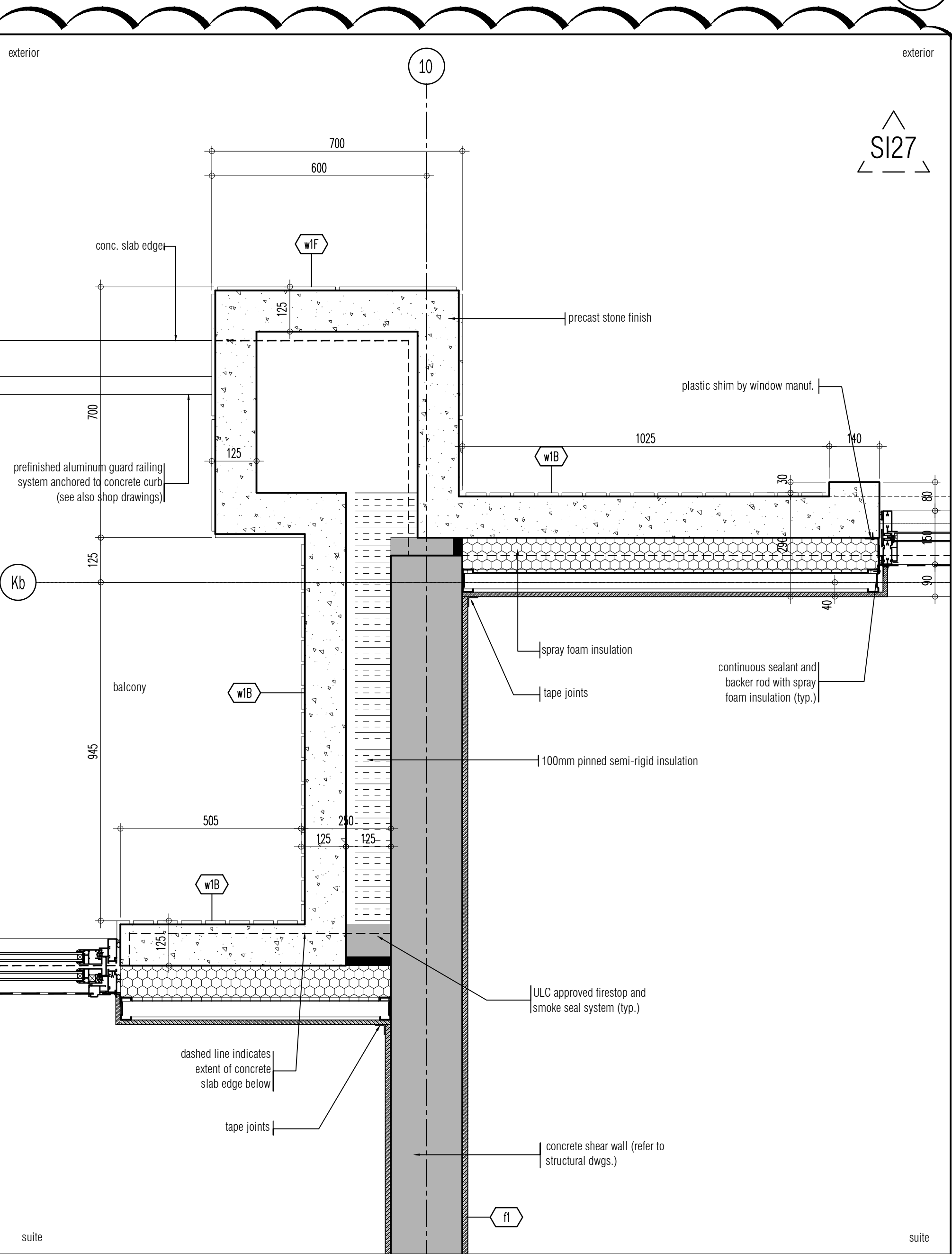
BEFORE STRUCTURAL COLUMN (A)



PRECAST BAND DETAIL @ BALCONY - TYPICAL 3  
SCALE - 1/10 A802



balcony corner detail with column (typ.) 2  
SCALE - 1/10 A802



corner detail at precast 1  
SCALE - 1/10 A802