

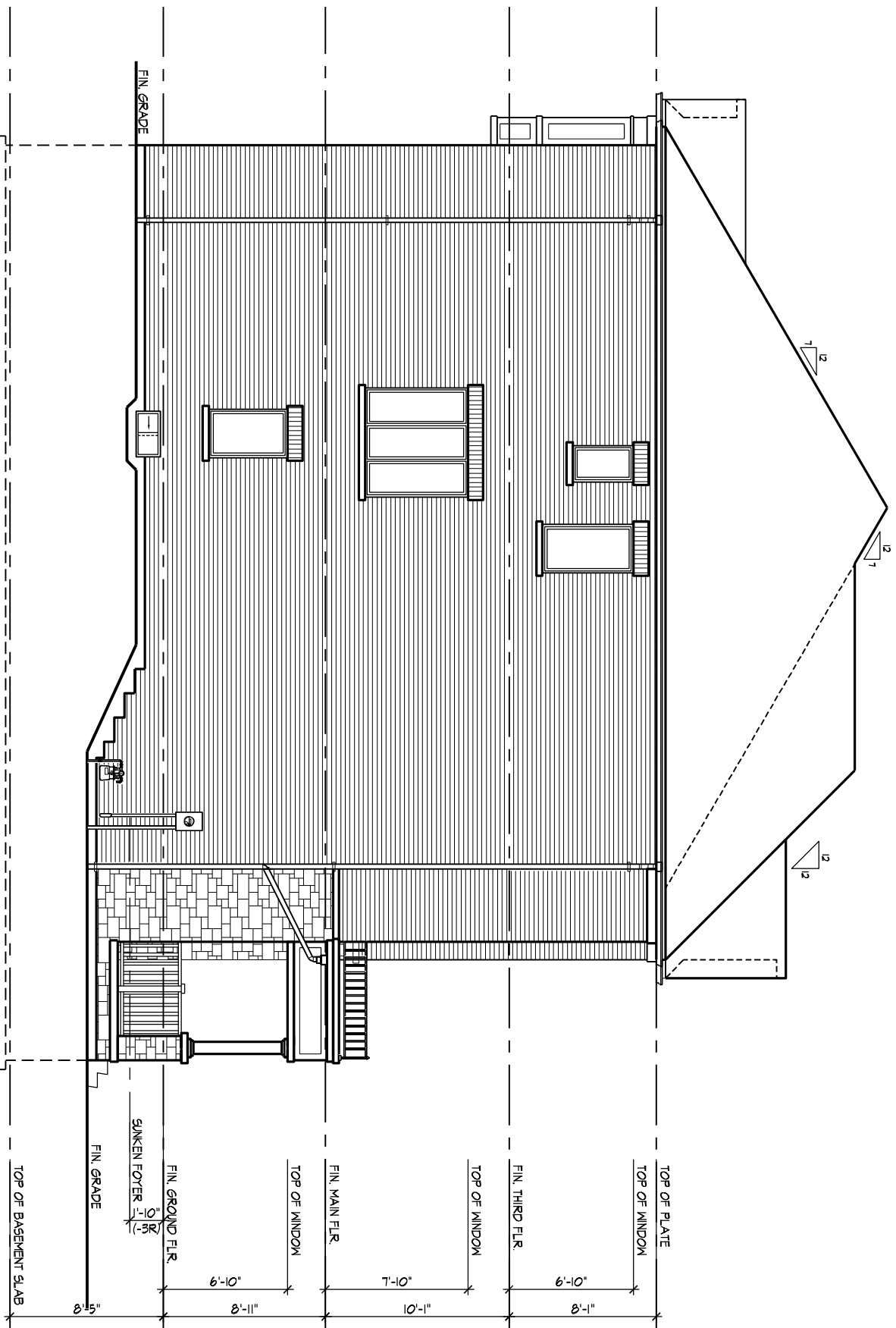
1 1804  
4 EL. B' - CORNER (REV.)

2 1801  
4 EL. B' (REV.)

3 1801  
4 EL. B' (REV.)

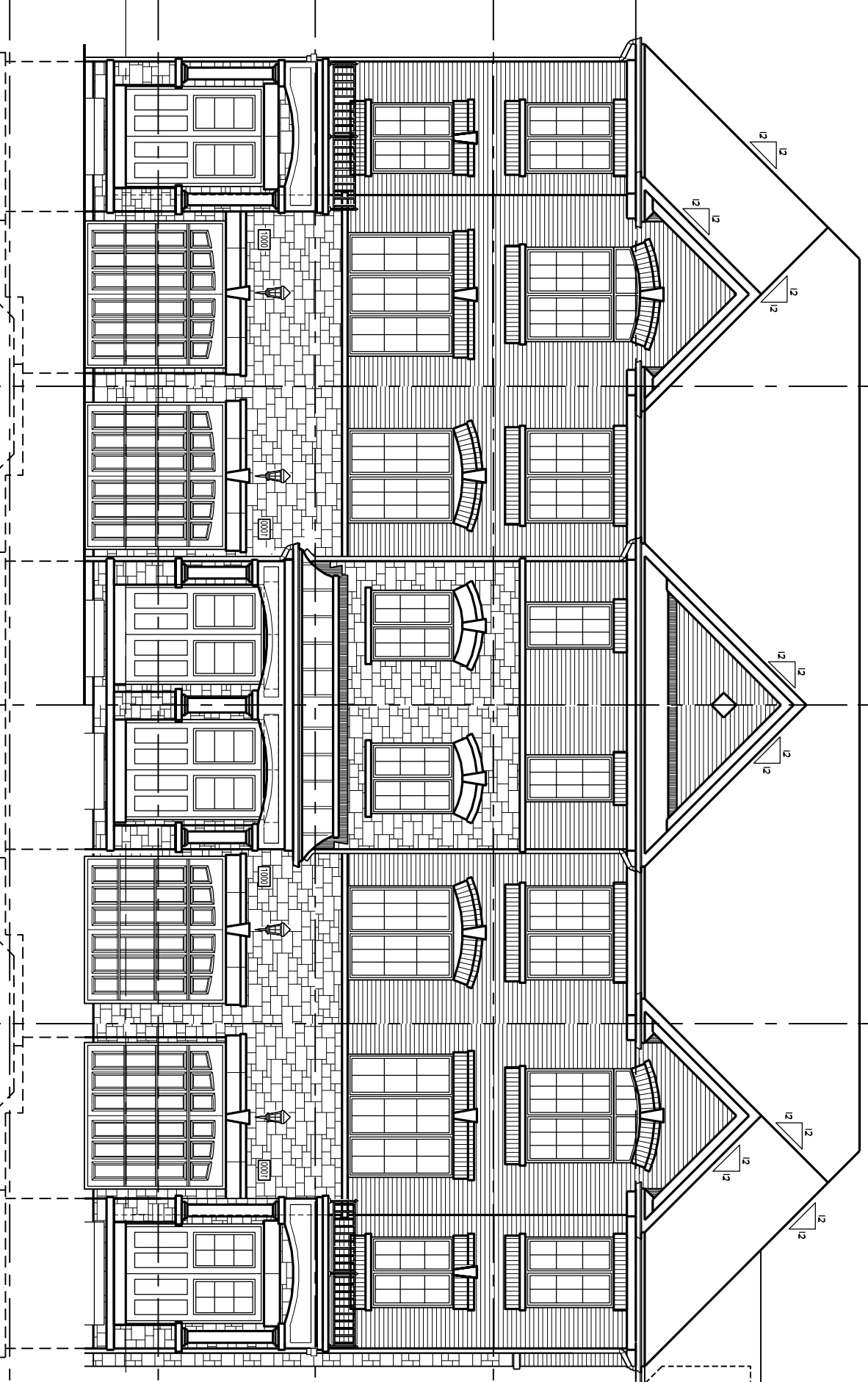
4 1804  
4 EL. B' - CORNER (REV.)

ROOF PLAN



1 1804  
4 EL. B'

LEFT SIDE ELEVATION



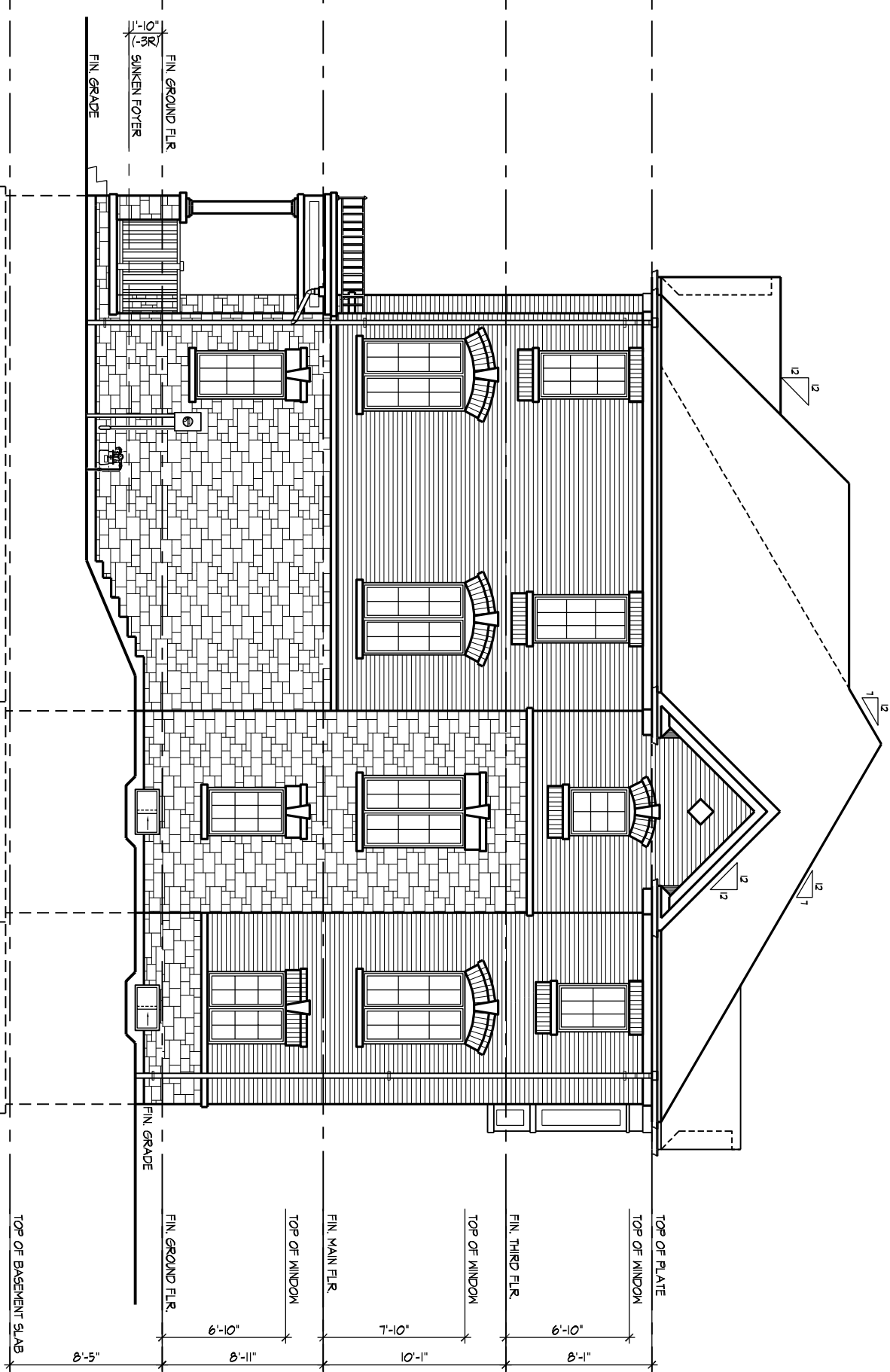
1 1804  
4 EL. B'

2 1801  
4 EL. B' (REV.)

3 1802  
4 EL. B'

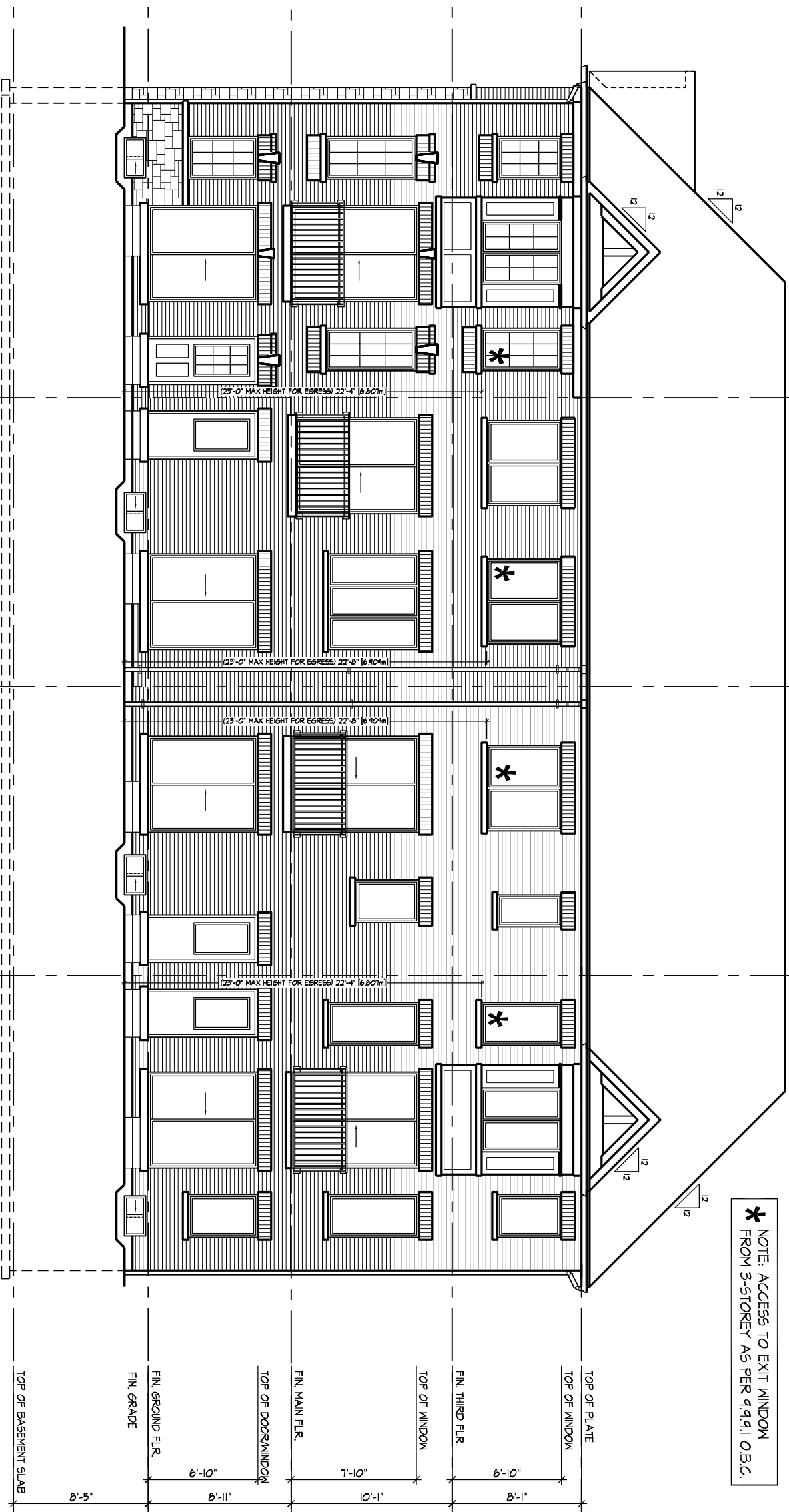
4 1804  
4 EL. B' - CORNER (REV.)

FRONT ELEVATION



4 1804  
4 EL. B' - CORNER (REV.)

FLANKAGE ELEVATION



4 1804  
4 EL. B' - CORNER (REV.)

5 1802  
4 EL. B'

6 1801  
4 EL. B' (REV.)

7 1804  
4 EL. B'

REAR ELEVATION

NOTE: \* REFERS TO DIRT ANCHOR FROM 3-5 STOREY AS PER 414.0.0.0.0.0.

44

**BUILDING AREA** 3146.08 sq ft  
**EXCLUDING PORCHES** 2292.56 sq ft




### GENERAL NOTES

1. PROVIDE FIRESTOPS AS REQUIRED BY O.B.C. 9.10.16
2. REFER TO UNIT WORKING DRAWINGS, ENGINEERS DRAWINGS AND SPECIFICATIONS FOR ADDITIONAL INFORMATION AND VERIFICATION.
3. REFER TO ROOF-TRUSS MANUFACTURER'S DRAWINGS FOR LAYOUT, SPACING, INSTALLATION DETAILS AND HANGER SIZES.
4. CONTRACTOR MUST VERIFY ALL DIMENSIONS ON THE JOB REPORT ANY DISCREPANCIES TO HUNT DESIGN ASSOCIATES INC. (H.D.A.I.) BEFORE PROCEEDING WITH THE WORK. ALL DRAWINGS AND SPECIFICATIONS ARE INSTRUMENTS OF SERVICE AND ARE THE PROPERTY OF H.D.A.I.
5. COMBUSTIBLE PROJECTIONS ON THE EXTERIOR OF A WALL THAT ARE MORE THAN 110mm (4 3/8") ABOVE GROUND SHALL NOT BE PERMITTED WITHIN 1.2m OF THE LINE OF A PROPERTY LINE OR CENTRE LINE OF A PROJECTION ON OTHER BUILDING ON THE SAME PROPERTY AS PER PART 9 SECTION 9.10.14.5.6)

### LEGEND

- POURED IN PLACE STEPS WITH MASONRY VENEER ON SIDES.
- PROP OR RAISE BANDING BY AMOUNT INDICATED.
- ADD BANDING AND/OR TIMB AS INDICATED.
- ADDED CAMBERED HEADERS.
- 847 X 847 GARAGE DOORS.
- DROPPED OR RAISED SOFFIT AS INDICATED.
- ADJUSTED ROOF OVERHANG AS INDICATED ON ROOF PLAN.
- PROVIDE SLAND PER CONSTRUCTION NOTE 11.
- FOYER SLAKEN AS INDICATED.
- LIGHT FIXTURE RELOCATED AS INDICATED.

### WALL TYPE LEGEND

FR	LINE TYPE	DETAILS
45 MIN		SECTION 1, 2 & 3
60 MIN		SECTION 8 (BLOCK) SECTION 9 (WOOD STUD)
120 MIN		SECTION 10