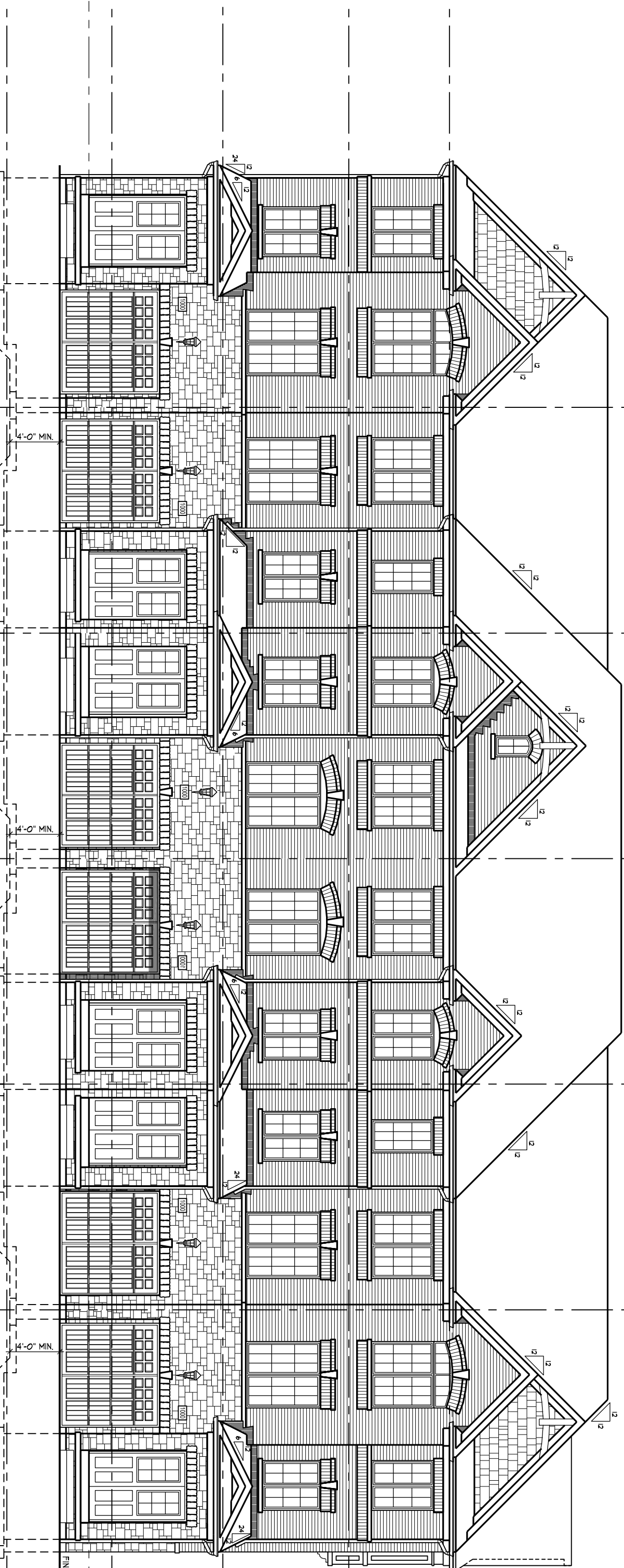


1 204 EL. A
2 201 EL. A (REV.)
3 203 EL. A1
4 203 EL. A (REV.)
5 202 EL. A
6 204 EL. A - CORNER (REV.)

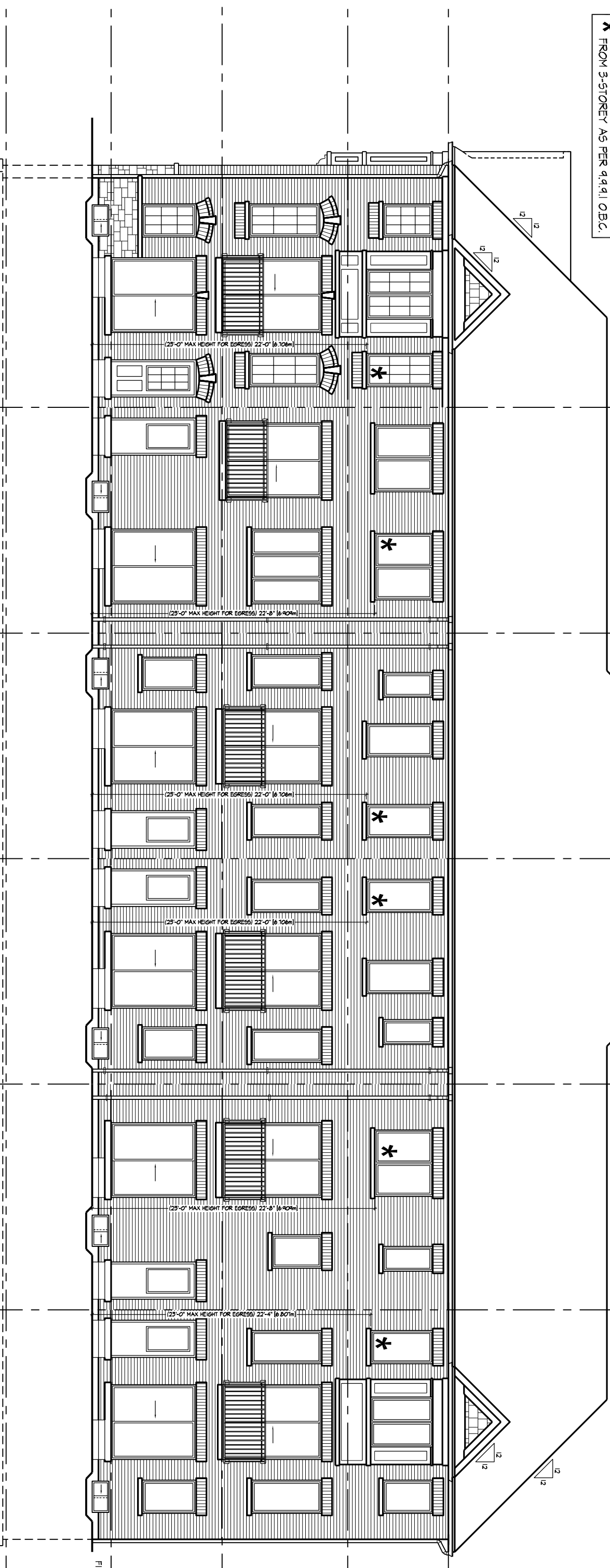
ROOF PLAN



1 204 EL. A
2 201 EL. A (REV.)
3 203 EL. A1
4 203 EL. A (REV.)
5 202 EL. A
6 204 EL. A - CORNER (REV.)

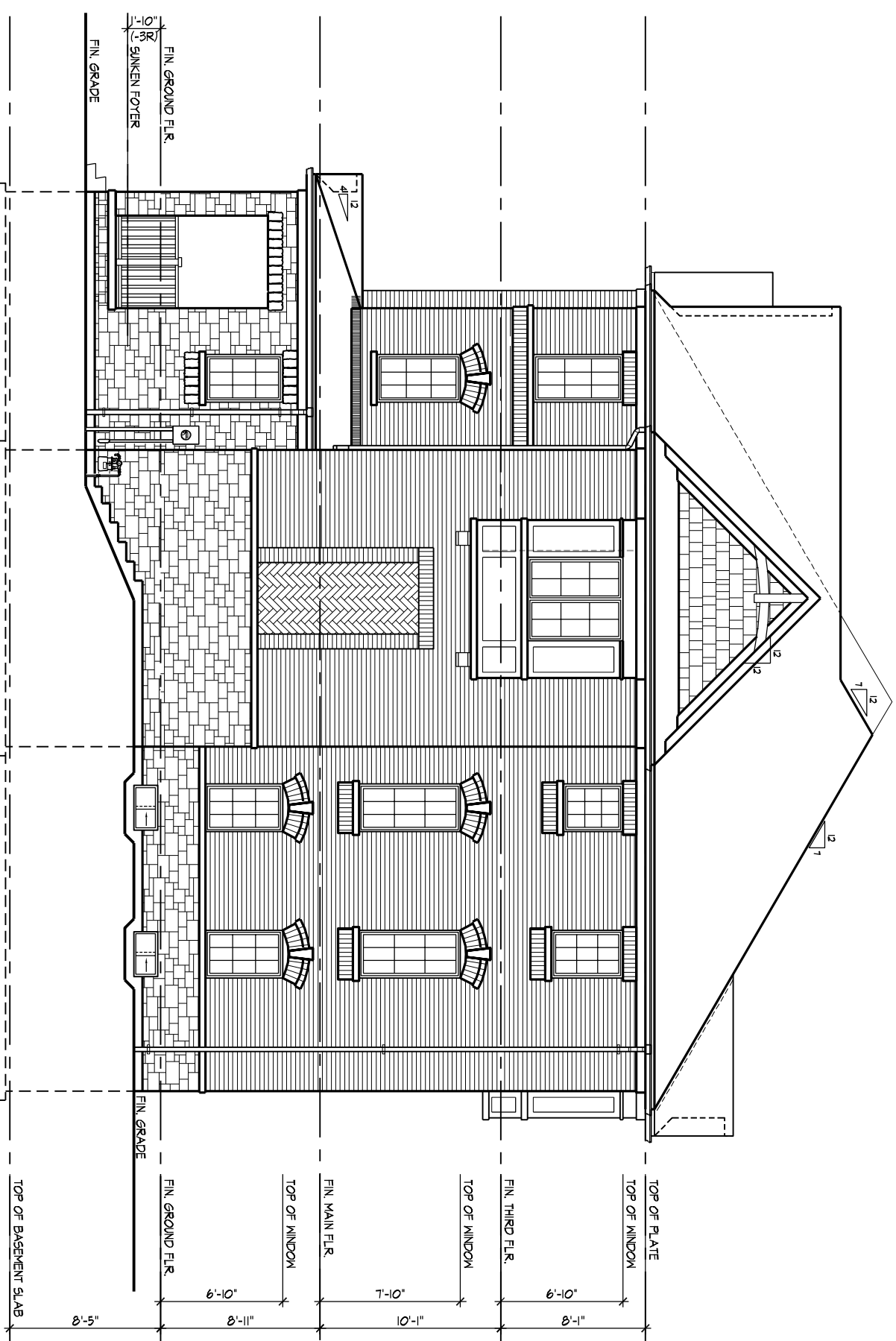
FRONT ELEVATION

* NOTE: ACCESS TO ENTRY INDOOR FROM 3-STORY AS PER 4.4.1 O.B.C.



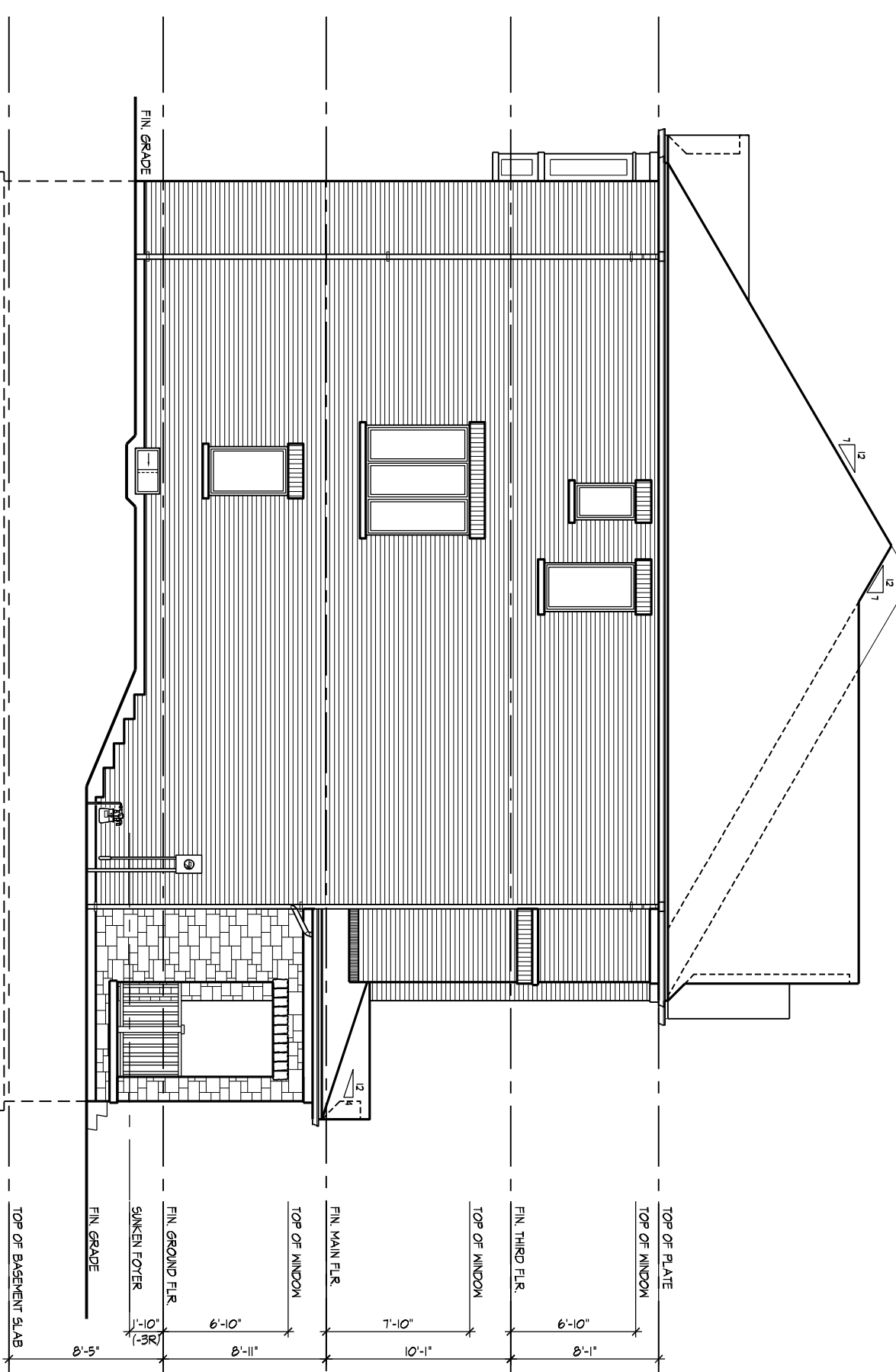
6 204 EL. A - CORNER (REV.)
5 202 EL. A
4 203 EL. A1
3 203 EL. A (REV.)
2 201 EL. A
1 204 EL. A

REAR ELEVATION



6 204 EL. A - CORNER
5 202 EL. A

FLANKAGE ELEVATION



1 204 EL. A
3 202 EL. A

LEFT SIDE ELEVATION

BUILDING AREA 4754.17 sq ft
EXCLUDING PORCHES 441.88 sq m




GENERAL NOTES

1. PROVIDE PRESTRESS AS REQUIRED BY O.B.C. 8.10.16
2. REFER TO JUNIT WORKING DRAWINGS, ENGINEERS DRAWINGS AND SITE PLAN FOR ADDITIONAL INFORMATION AND VERIFICATION.
3. REFER TO ROOF-TRUSS MANUFACTURERS DRAWINGS FOR LAYOUT, SPACING, INSTALLATION DETAILS AND HANGER SIZES.
4. CONTRACTOR MUST VERIFY ALL DIMENSIONS ON THE JOB REPORT ANY DISCREPANCIES TO HUNT DESIGN ASSOCIATES INC. (H-DAI) BEFORE PROCEEDING WITH THE WORK. ALL DRAWINGS AND SPECIFICATIONS ARE INSTRUMENTS OF SERVICE AND ARE THE PROPERTY OF H-DAI.
5. COMBUSTIBLE PROJECTIONS ON THE EXTERIOR OF A WALL THAT ARE MORE THAN 1100mm (9' 3 3/8") ABOVE GROUND SHALL NOT BE PERMITTED WITHIN 1.2m (3' 11 1/8") OF A PROPERTY LINE OR CENTRE LINE OF A PUBLIC WAY OR 2.4m (7' 10 1/8") OF A COMBUSTIBLE PROJECTION ON ADJACENT BUILDING ON THE SAME PROPERTY AS PER PART 3 SECTION 8.10.14.3.19

LEGEND

- POURED IN PLACE STEPS WITH MASONRY VENEER ON SIDES.
- DROP ON PHASE BANDING BY AMOUNT INDICATED.
- ADD BANDING AND/OR TRIM AS INDICATED.
- ADDED CAMBERED HEADERS.
- 8'0" X 8'0" GARAGE DOORS.
- DROPPED OR RAISED SOFFIT AS INDICATED.
- ADJUSTED ROOF OVERHANG AS INDICATED ON ROOF PLAN.
- PROVIDE GUARD PER CONSTRUCTION NOTE 11.
- FOYER SUNKEN AS INDICATED
- LIGHT FIXTURE RELOCATED AS INDICATED.

WALL TYPE LEGEND

FHR	LINE TYPE	DETAILS
45 MIN		SECTION 1, 2 & 3
60 MIN		SECTION 3 (BLOCK SECTION 9 (WOOD STUD)
120 MIN		SECTION 10

DETAILS