



UNITED ENGINEERING INC
Mechanical and Electrical Consulting Engineers

3645 Keele St. #105
Toronto, ON, M3J 1M6
Email: info@u-eng.ca
T: (416) 398-1999
F: (416) 398-1933

SITE INSTRUCTION

PROJECT: HAMPTON MANOR
25 BAKER HILL BLVD
STOUFFVILLE, ONTARIO

PROJECT NO #: 14-016

CONTRACT: Electrical

DATE July 10, 2018

SITE INSTRUCTION NO.: E-26

THIS SITE INSTRUCTION IS NOT TO BE CONSTRUED AS A CHANGE IN THE CONTRACT PRICE, BUT IS ISSUED FOR CLARIFICATION ONLY. IF A CHANGE IN CONTRACT PRICE IS PERCEIVED, PROVIDE AN ITEMIZED BREAKDOWN OF ANY EXTRAS OR CREDITS WITHIN SEVEN (7) WORKING DAYS.

PURPOSE: To suit mechanical SI M-20 & SI M-21.

1.0 Reference Drawings E-3B (Ground floor B - Electrical) Issued

1.1 Relocate: Exhaust fan F-2 and FCU #11 as per mechanical drawings.

2.0 Reference Drawings E-11 (Single Line Diagram - Electrical) Issued

2.1 Revise: Fusible disconnect switch and feeder size for storm pump P-9 as shown.

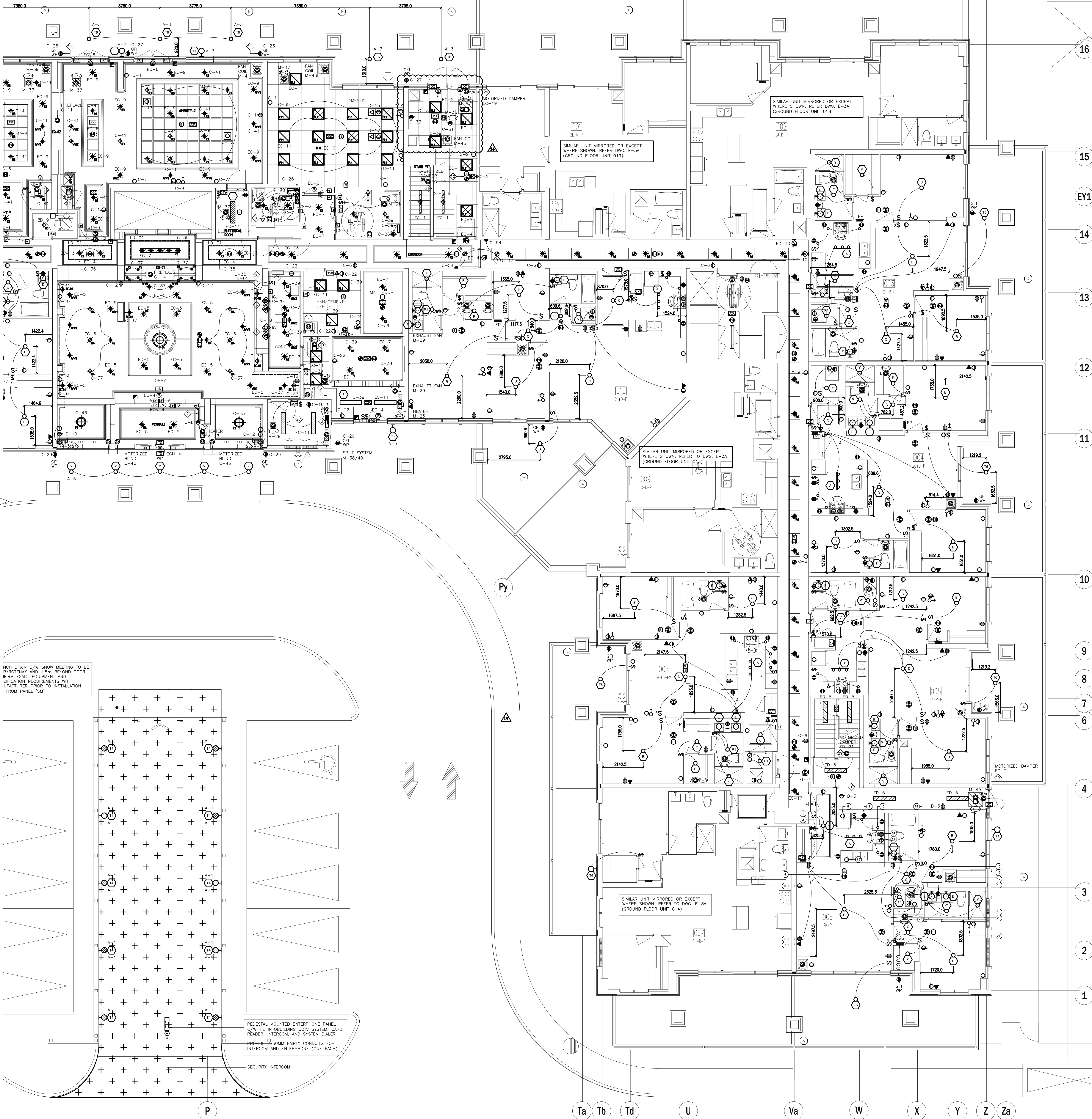
PREPARED BY:

Susan Pan

Susan Pan
Electrical Department

ISSUED TO ROYAL PINE HOMES,
Cinzia Caruso, Cinzia@royalpinehomes.com;
Vince Staffieri, vince@royalpinehomes.co
FOR DISTRIBUTION TO ALL AFFECTED PARTIES.

FOR CONTINUATION REFER TO DWG. E-3A



SUITES' KEY NOTES (TYPICAL)

- DOOR CONTACT
- SUITE INTRUSION ALARM AND KEYPAD WITH DIGITAL DISPLAY
- IN SUITE TELEPHONE/TV COMBO DISTRIBUTION PANEL
- CEILING MOUNTED FIRE ALARM COMBINATION SPEAKER/STROBE LIGHT
- 120V U-GROUND DUPLEX RECEPTACLE FOR GENERAL PURPOSES
- 120V U-GROUND DUPLEX RECEPTACLE WITH ONE HALF SWITCH CONTROLLED
- WALL MOUNTED TELEPHONE OUTLET
- 120V, 15A, RECEPTACLE FOR FRIDGE
- 120V, 20A, 1-SLOT RECEPTACLE MOUNTED ABOVE COUNTER TOP (ALL RECEPTACLES LOCATED WITHIN 1.5M OF KITCHEN SINKS ALONG THE WALL BEHIND THE COUNTERS SHALL BE PROTECTED BY GFI BREAKERS OF THE CLASS A TYPE)
- UNDER COUNTER LIGHTING TYPE TO BE CONFIRMED BY CLIENT
- 250V, 18, 4W, 50A, RECEPTACLE FOR RANGE. CONNECT WITH 3/8" BX OR 3/8" THW-19MM CONDUIT
- RECEPTACLE FOR KITCHEN MICROWAVE AND EXHAUST FAN
- 120V U-GROUND DUPLEX RECEPTACLE FOR DISHWASHER
- WALL MOUNTED COMBINATION TV/TELEPHONE OUTLET
- CEILING MOUNTED FIRE ALARM SPEAKER
- CEILING MOUNTED 120V SMOKE ALARM/CARBON MONOXIDE COMBO DETECTOR (FOR 1ST, 2ND, 3RD, 6TH AND 7TH FLOORS)
- ALL DETECTORS WITHIN SAME SUITE TO BE INTERCONNECTED AND HAVE A VISUAL SIGNALING COMPONENT IN ACCORDANCE WITH CBC
- DIRECT CONNECTION FOR VERTICAL FAN COIL UNIT. REFER TO MECHANICAL DRAWING FOR MORE DETAILS
- 120V U-GROUND DUPLEX GFI RECEPTACLE FOR WASHROOM
- 120V, 15A, RECEPTACLE FOR WASHER
- 250V, 10, 4W, 30A, RECEPTACLE FOR DRYER. CONNECT TO 3/8" BX OR 3/8" THW-19MM CONDUIT
- WALL MOUNTED TV OUTLET
- DIRECT CONNECTION FOR DRYER EXHAUST FAN
- DIRECT CONNECTION FOR WASHROOM EXHAUST FAN
- FLUSH MOUNTED SUITE SERVICE PANEL. SEE DRAWING E-16 FOR SUITE PANEL SCHEDULE
- 120V U-GROUND DUPLEX GFI WEATHER PROOF RECEPTACLE IN BALCONY (TYPICAL FOR 1ST FLOOR AND EXTERIOR BALCONY ONLY)
- 120V U-GROUND DUPLEX WEATHER PROOF RECEPTACLE IN BALCONY (TYPICAL FOR 2ND TO 7TH FLOORS)

NOTES:

ALSO REFER TO TYPICAL SUITES NOTES ON DRAWING E-9B. (ALL RECEPTACLES SHALL BE PROTECTED BY ARC-FAULT INTERRUPTERS)

GENERAL KEY NOTES

- JUNCTION BOX FOR TRI-SORT GARBAGE SYSTEM
- ENTERPHONE PANEL C/W TIE INTO BUILDING CCTV SYSTEM, CARD READER, INTERCOM, AND SYSTEM DIALER
- CACF FIRE ALARM CONTROL PANEL
- KEY SWITCH ELEVATOR RECALL CO-ORDINATE EXACT LOCATION WITH ELEVATOR CONTRACTOR
- FIRE ALARM MASTER OPERATION SWITCH FOR FIRE DEPARTMENT MASTER CONTROL
- CONFIRM POWER AND COMMUNICATION REQUIREMENTS AT CONCIERGE DESK WITH CLIENT. PROVIDE 4x2" CONDUIT TO COMMUNICATION ROOM
- BUILDING STATUS ANNUNCIATOR PANEL
- EMERGENCY BUTTON C/W INTERCONNECT TO CONCIERGE
- DOOR HOLD OPEN DEVICE INTERCONNECTED TO FIRE ALARM SYSTEM TO RELEASE UPON ACTIVATION OF FIRE ALARM SYSTEM INTERCONNECTED TO LOCALIZED SMOKE DETECTORS
- TOP OF STAIR
- SMOKE DETECTOR AND SPEAKER C/W FIRE ALARM ZONE
- GFI WATERPROOF BRD RECEPTACLE TO BE INSTALLED AT LEAST 1M AWAY FROM GAS CONNECTION. COORDINATE EXACT LOCATION ON SITE. (TYPICAL FOR 2)
- FIREPLACE 'S' CONTROL. REQUIREMENT AND LOCATION TBC
- FRIDGE
- DISHWASHER
- SPLIT COUNTER RECEPTACLES
- SPLIT COUNTER RECEPTACLES
- NO USE.
- MICRO/FAN
- STOVE
- SPLIT SYSTEM E-8 (STORAGE)
- SPLIT SYSTEM E-8 (WC)
- SPLIT SYSTEM E-8 (AMENITY)
- SPLIT SYSTEM E-8 (AMENITY)
- BASEBOARD HEATER
- BASEBOARD HEATER
- COVE LIGHTING 'LD-01'
- CACF ROOM IS REQUIRED TO CONTAIN THE FOLLOWING CONTROLS:
 - A MEANS TO CONTROL THE VOICE COMMUNICATION SYSTEM
 - MEANS TO INDICATE AUDIBLE AND VISUAL ALARM SIGNALS
 - MEANS TO INDICATE VISUALLY THAT ELEVATORS ARE ON EMERGENCY RECALL
 - MEANS TO TRANSMIT ALARM SIGNALS TO THE FIRE DEPARTMENT
 - MEANS TO RELEASE HOLD-OPEN DEVICES
 - MEANS TO MANUALLY ACTIVATE ALARM SIGNALS
 - MEANS TO SILENCE ALARM SIGNALS
 - MEANS TO COMMUNICATE WITH EVERY ELEVATOR CAR
 - MEANS TO INDICATE VISUALLY INDIVIDUAL SPRINKLER SYSTEM WATER FLOW SIGNALS
 - A SWITCH TO SILENCE THE AUDIBLE PORTION OF A SUPERVISORY SIGNAL OR A TROUBLE SIGNAL
 - CONTROLS TO STOP AIR HANDLING SYSTEMS
 - CONTROLS TO INITIATE EMERGENCY PRESSURIZATION AIR SUPPLIES
 - CONTROLS TO OPERATE POWERED DOOR OPERATORS AND/OR MOTORIZED FIRE DAMPERS FORMING PART OF A PRESSURIZATION/RELIEF SYSTEM
- CONFIRM ALL DIMENSIONS OF LIGHTING FIXTURES ON SITE WITH CLIENT PRIOR TO ROUGH-IN.
- MOTORIZED DAMPER TO BE INTERCONNECTED WITH LOWER PRESS FAN AND RELEASED UPON THE ACTIVATION OF FIRE ALARM. (TYPICAL FOR 6)

1. ELECTRICAL DRAWINGS TO BE READ IN CONJUNCTION WITH THE INTERIOR DESIGNER'S DRAWINGS IN AREAS SUCH AS LOBBY, AMENITY, MANAGEMENT OFFICE, MAIL, CONCIERGE AND CORRIDORS. REFER TO THE INTERIOR DESIGNER'S DRAWINGS FOR EXACT LOCATION, REQUIREMENTS, MOUNTING HEIGHT AND LIGHTING SPECIFICATION.

NO.	BY	DESCRIPTION	DATE
14	SP	REVISED AS PER SI E-26	2018-07-10
13	SP	REVISED AS PER SI E-21	2018-03-22
12	SP	REVISED AS PER SI E-18	2018-03-08
11	CM	REVISED AS PER SI E-17	2017-12-19
10	CM	REVISED AS PER SI E-15	2017-11-23
09	CM	REVISED AS PER SI E-10	2017-09-12
08	CM	REVISED AS PER SI E-4	2017-08-17
07	CM	REVISED AS PER SI E-3	2017-08-11
06	CM	ISSUED FOR CONSTRUCTION	2017-08-09
05	CM	PROGRESS FOR CONSTRUCTION	2017-07-18
04	CM	ISSUED FOR PERMIT	2016-12-28
03	CM	REVISED AS PER ADD E-1	2016-12-12
02	CM	REVISED AS PER ESA COMMENTS AND FOR CLARIFICATION	2016-05-19
01	CM	ISSUED FOR TENDER	2016-03-15

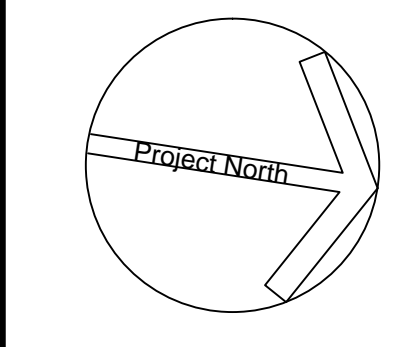
REVISIONS		
14	SP	REVISED AS PER SI E-26
13	SP	REVISED AS PER SI E-21
12	SP	REVISED AS PER SI E-18
11	CM	REVISED AS PER SI E-17
10	CM	REVISED AS PER SI E-15
09	CM	REVISED AS PER SI E-10
08	CM	REVISED AS PER SI E-4
07	CM	REVISED AS PER SI E-3
06	CM	ISSUED FOR CONSTRUCTION
05	CM	PROGRESS FOR CONSTRUCTION
04	CM	ISSUED FOR PERMIT
03	CM	REVISED AS PER ADD E-1
02	CM	REVISED AS PER ESA COMMENTS AND FOR CLARIFICATION
01	CM	ISSUED FOR TENDER

This drawing is an instrument of service, is provided by and is the property of United Engineering Inc. The contractor must verify and accept responsibility for all dimensions and conditions on site and must notify United Engineering Inc. of any discrepancy before proceeding.

United Engineering Inc. is not responsible for the accuracy of Architectural, structural, interior design, etc. on this drawing.

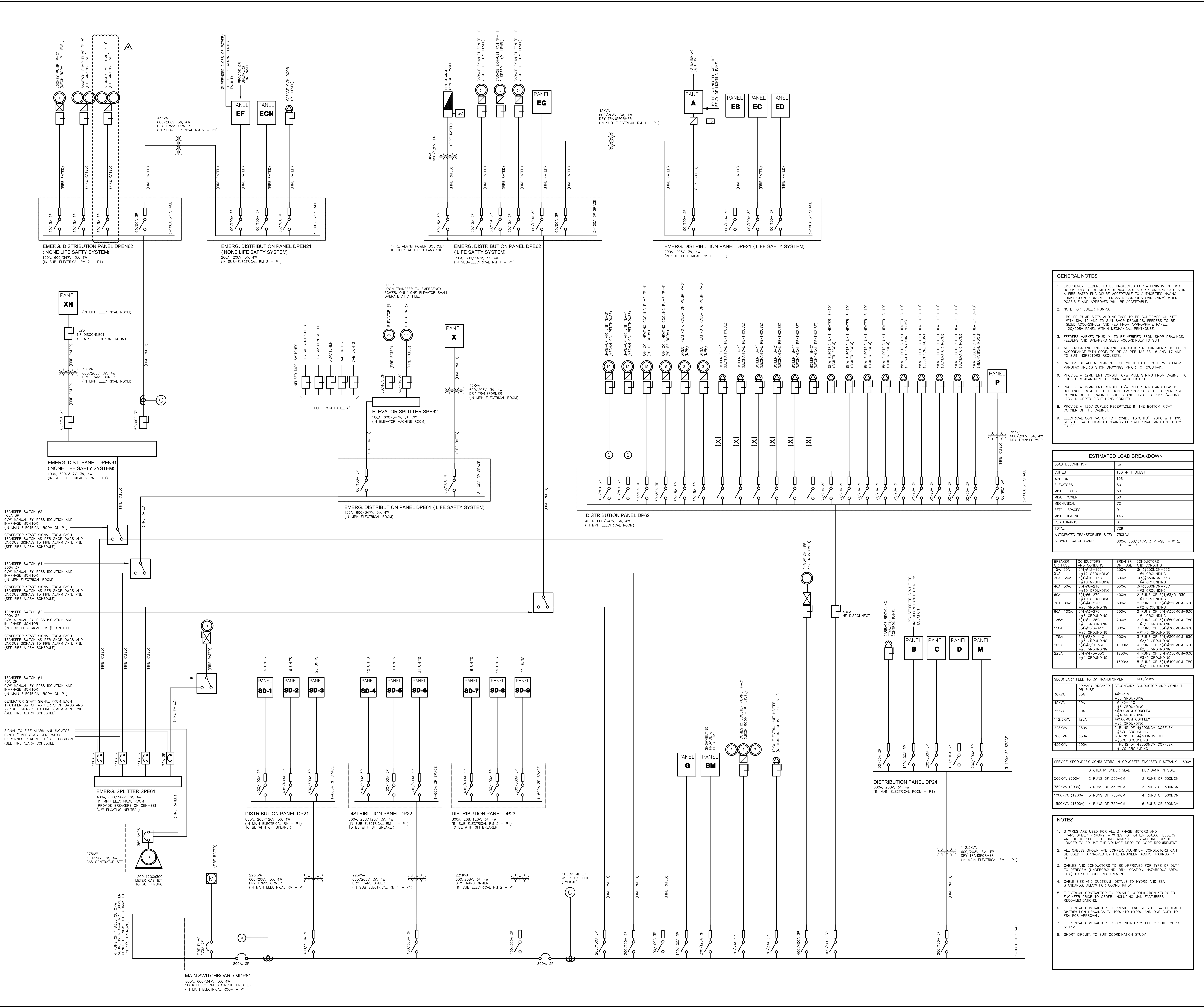
Refer to the appropriate trade drawings before proceeding with any work. Installation must conform to all applicable codes and requirements of the authorities having jurisdiction.

This drawing is not to be scaled, all symbols are graphic representations only.



United Engineering Inc.
Mechanical/Electrical Consulting Engineers
3345 Reels Street, Suite 105,
Toronto, Ontario, M3J 1M6
Tel: (416) 398 1999, Fax: (416) 398 1933

TITLE GROUND FLOOR PLAN - B ELECTRICAL		
PROJECT PROPOSED RESIDENTIAL DEVELOPMENT 25 BAKER HILL BLVD.		
DRAWN CM		
CHECKED MG		
SCALE 1:75		
DATE SEPT. 2015		
PROJECT 14-016		
DRAWING E-3B		
OF 12		



GENERAL NOTES	
1.	EMERGENCY FEEDERS TO BE PROTECTED FOR A MINIMUM OF TWO HOURS AND TO BE MI PYROTEKNAK CABLES OR STANDARD CABLES IN A FIRE RATED ENCLOSURE, ACCEPTABLE TO AUTHORITIES HAVING JURISDICTION, CONCRETE ENCASED CONDUITS (MIN 75MM) WHERE POSSIBLE AND APPROVED WILL BE ACCEPTABLE.
2.	NOTE FOR BOILER PUMPS: BOILER PUMP SIZES AND VOLTAGE TO BE CONFIRMED ON SITE WITH DW. 15 AND TO SUIT SHOP DRAWINGS. FEEDERS TO BE SIZED ACCORDINGLY AND FED FROM APPROPRIATE PANNEL, 120/208V PANNEL WITHIN MECHANICAL PENTHOUSE.
3.	FEEDERS MARKED THIS "X" TO BE VERIFIED FROM SHOP DRAWINGS. FEEDERS AND BREAKERS SIZED ACCORDINGLY TO SUIT.
4.	ALL GROUNDING AND BONDING CONDUCTOR REQUIREMENTS TO BE IN ACCORDANCE WITH CODE, TO BE AS PER TABLES 16 AND 17 AND TO SUIT INSPECTORS REQUESTS.
5.	RATINGS OF ALL MECHANICAL EQUIPMENT TO BE CONFIRMED FROM MANUFACTURER'S SHOP DRAWINGS PRIOR TO ROUGH-IN.
6.	PROVIDE A 32MM EMT CONDUIT C/W FULL STRING FROM CABINET TO THE CT CONNECTION OF MAIN SWITCHBOARD.
7.	PROVIDE A 19MM EMT CONDUIT C/W FULL STRING AND PLASTIC BUSHINGS FROM THE TELEPHONE BACKBOARD TO THE UPPER RIGHT CORNER OF THE CABINET, SUPPLY AND INSTALL A RUT1 (4-IN) JACK IN UPPER RIGHT HAND CORNER.
8.	PROVIDE A 120V DUPLEX RECEPTACLE IN THE BOTTOM RIGHT CORNER OF THE CABINET.
9.	ELECTRICAL CONTRACTOR TO PROVIDE "TORONTO" HYDRO WITH TWO SETS OF SWITCHBOARD DRAWINGS FOR APPROVAL AND ONE COPY TO ESA.

ESTIMATED LOAD BREAKDOWN	
LOAD DESCRIPTION	KW
SUITES	150 + 1 GUEST
A/C UNIT	108
ELEVATORS	50
MISC. LIGHTS	50
MISC. POWER	50
MECHANICAL	72
RETAIL SPACES	0
MISC. HEATING	143
RESTAURANTS	0
TOTAL	729
ANTICIPATED TRANSFORMER SIZE: 750KVA	
SERVICE SWITCHBOARD: 800A, 600/347V, 3 PHASE, 4 WIRE, FULL RATED	

BREAKER OR FUSE	CONDUCTORS AND LOADS	BREAKER OR FUSE	CONDUCTORS AND LOADS
15A, 20A, 25A, 30A, 35A, 40A, 45A, 50A, 60A, 70A, 80A, 90A, 100A, 125A, 150A, 175A, 200A, 225A, 250A, 275A, 300A, 350A, 400A, 450A, 500A, 550A, 600A, 650A, 700A, 750A, 800A, 850A, 900A, 950A, 1000A, 1050A, 1100A, 1150A, 1200A, 1250A, 1300A, 1350A, 1400A, 1450A, 1500A, 1550A, 1600A, 1650A, 1700A, 1750A, 1800A, 1850A, 1900A, 1950A, 2000A, 2050A, 2100A, 2150A, 2200A, 2250A, 2300A, 2350A, 2400A, 2450A, 2500A, 2550A, 2600A, 2650A, 2700A, 2750A, 2800A, 2850A, 2900A, 2950A, 3000A, 3050A, 3100A, 3150A, 3200A, 3250A, 3300A, 3350A, 3400A, 3450A, 3500A, 3550A, 3600A, 3650A, 3700A, 3750A, 3800A, 3850A, 3900A, 3950A, 4000A, 4050A, 4100A, 4150A, 4200A, 4250A, 4300A, 4350A, 4400A, 4450A, 4500A, 4550A, 4600A, 4650A, 4700A, 4750A, 4800A, 4850A, 4900A, 4950A, 5000A, 5050A, 5100A, 5150A, 5200A, 5250A, 5300A, 5350A, 5400A, 5450A, 5500A, 5550A, 5600A, 5650A, 5700A, 5750A, 5800A, 5850A, 5900A, 5950A, 6000A, 6050A, 6100A, 6150A, 6200A, 6250A, 6300A, 6350A, 6400A, 6450A, 6500A, 6550A, 6600A, 6650A, 6700A, 6750A, 6800A, 6850A, 6900A, 6950A, 7000A, 7050A, 7100A, 7150A, 7200A, 7250A, 7300A, 7350A, 7400A, 7450A, 7500A, 7550A, 7600A, 7650A, 7700A, 7750A, 7800A, 7850A, 7900A, 7950A, 8000A, 8050A, 8100A, 8150A, 8200A, 8250A, 8300A, 8350A, 8400A, 8450A, 8500A, 8550A, 8600A, 8650A, 8700A, 8750A, 8800A, 8850A, 8900A, 8950A, 9000A, 9050A, 9100A, 9150A, 9200A, 9250A, 9300A, 9350A, 9400A, 9450A, 9500A, 9550A, 9600A, 9650A, 9700A, 9750A, 9800A, 9850A, 9900A, 9950A, 10000A, 10050A, 10100A, 10150A, 10200A, 10250A, 10300A, 10350A, 10400A, 10450A, 10500A, 10550A, 10600A, 10650A, 10700A, 10750A, 10800A, 10850A, 10900A, 10950A, 11000A, 11050A, 11100A, 11150A, 11200A, 11250A, 11300A, 11350A, 11400A, 11450A, 11500A, 11550A, 11600A, 11650A, 11700A, 11750A, 11800A, 11850A, 11900A, 11950A, 12000A, 12050A, 12100A, 12150A, 12200A, 12250A, 12300A, 12350A, 12400A, 12450A, 12500A, 12550A, 12600A, 12650A, 12700A, 12750A, 12800A, 12850A, 12900A, 12950A, 13000A, 13050A, 13100A, 13150A, 13200A, 13250A, 13300A, 13350A, 13400A, 13450A, 13500A, 13550A, 13600A, 13650A, 13700A, 13750A, 13800A, 13850A, 13900A, 13950A, 14000A, 14050A, 14100A, 14150A, 14200A, 14250A, 14300A, 14350A, 14400A, 14450A, 14500A, 14550A, 14600A, 14650A, 14700A, 14750A, 14800A, 14850A, 14900A, 14950A, 15000A, 15050A, 15100A, 15150A, 15200A, 15250A, 15300A, 15350A, 15400A, 15450A, 15500A, 15550A, 15600A, 15650A, 15700A, 15750A, 15800A, 15850A, 15900A, 15950A, 16000A, 16050A, 16100A, 16150A, 16200A, 16250A, 16300A, 16350A, 16400A, 16450A, 16500A, 16550A, 16600A, 16650A, 16700A, 16750A, 16800A, 16850A, 16900A, 16950A, 17000A, 17050A, 17100A, 17150A, 17200A, 17250A, 17300A, 17350A, 17400A, 17450A, 17500A, 17550A, 17600A, 17650A, 17700A, 17750A, 17800A, 17850A, 17900A, 17950A, 18000A, 18050A, 18100A, 18150A, 18200A, 18250A, 18300A, 18350A, 18400A, 18450A, 18500A, 18550A, 18600A, 18650A, 18700A, 18750A, 18800A, 18850A, 18900A, 18950A, 19000A, 19050A, 19100A, 19150A, 19200A, 19250A, 19300A, 19350A, 19400A, 19450A, 19500A, 19550A, 19600A, 19650A, 19700A, 19750A, 19800A, 19850A, 19900A, 19950A, 20000A, 20050A, 20100A, 20150A, 20200A, 20250A, 20300A, 20350A, 20400A, 20450A, 20500A, 20550A, 20600A, 20650A, 20700A, 20750A, 20800A, 20850A, 20900A, 20950A, 21000A, 21050A, 21100A, 21150A, 21200A, 21250A, 21300A, 21350A, 21400A, 21450A, 21500A, 21550A, 21600A, 21650A, 21700A, 21750A, 21800A, 21850A, 21900A, 21950A, 22000A, 22050A, 22100A, 22150A, 22200A, 22250A, 22300A, 22350A, 22400A, 22450A, 22500A, 22550A, 22600A, 22650A, 22700A, 22750A, 22800A, 22850A, 22900A, 22950A, 23000A, 23050A, 23100A, 23150A, 23200A, 23250A, 23300A, 23350A, 23400A, 23450A, 23500A, 23550A, 23600A, 23650A, 23700A, 23750A, 23800A, 23850A, 23900A, 23950A, 24000A, 24050A, 24100A, 24150A, 24200A, 24250A, 24300A, 24350A, 24400A, 24450A, 24500A, 24550A, 24600A, 24650A, 24700A, 24750A, 24800A, 24850A, 24900A, 24950A, 25000A, 25050A, 25100A, 25150A, 25200A, 25250A, 25300A, 25350A, 25400A, 25450A, 25500A, 25550A, 25600A, 25650A, 25700A, 25750A, 25800A, 25850A, 25900A, 25950A, 26000A, 26050A, 26100A, 26150A, 26200A, 26250A, 26300A, 26350A, 26400A, 26450A, 26500A, 26550A, 26600A, 26650A, 26700A, 26750A, 26800A, 26850A, 26900A, 26950A, 27000A, 27050A, 27100A, 27150A, 27200A, 27250A, 27300A, 27350A, 27400A, 27450A, 27500A, 27550A, 27600A, 27650A, 27700A, 27750A, 27800A, 27850A, 27900A, 27950A, 28000A, 28050A, 28100A, 28150A, 28200A, 28250A, 28300A, 28350A, 28400A, 28450A, 28500A, 28550A, 28600A, 28650A, 28700A, 28750A, 28800A, 28850A, 28900A, 28950A, 29000A, 29050A, 29100A, 29150A, 29200A, 29250A, 29300A, 29350A, 29400A, 29450A, 29500A, 29550A, 29600A, 29650A, 29700A, 29750A, 29800A, 29850A, 29900A, 29950A, 30000A, 30050A, 30100A, 30150A, 30200A, 30250A, 30300A, 30350A, 30400A, 30450A, 30500A, 30550A, 30600A, 30650A, 30700A, 30750A, 30800A, 30850A, 30900A, 30950A, 31000A, 31050A, 31100A, 31150A, 31200A, 31250A, 31300A, 31350A, 31400A, 31450A, 31500A, 31550A, 31600A, 31650A, 31700A, 31750A, 31800A, 31850A, 31900A, 31950A, 32000A, 32050A, 32100A, 32150A, 32200A, 32250A, 32300A, 32350A, 32400A, 32450A, 32500A, 32550A, 32600A, 32650A, 32700A, 32750A, 32800A, 32850A, 32900A, 32950A, 33000A, 33050A, 33100A, 33150A, 33200A, 33250A, 33300A, 33350A, 33400A, 33450A, 33500A, 33550A, 33600A, 33650A, 33700A, 33750A, 33800A, 33850A, 33900A, 33950A, 34000A, 34050A, 34100A, 34150A, 34200A, 34250A, 34300A, 34350A, 34400A, 34450A, 34500A, 34550A, 34600A, 34650A, 34700A, 34750A, 34800A, 34850A, 34900A, 34950A, 35000A, 35050A, 35100A, 35150A, 35200A, 35250A, 35300A, 35350A, 35400A, 35450A, 35500A, 35550A, 35600A, 35650A, 35700A, 35750A, 35800A, 35850A, 35900A, 35950A, 36000A, 36050A, 36100A, 36150A, 36200A, 36250A, 36300A, 36350A, 36400A, 36450A, 36500A, 36550A, 36600A, 36650A, 36700A, 36750A, 36800A, 36850A, 36900A, 36950A, 37000A, 37050A, 37100A, 37150A, 37200A, 37250A, 37300A, 37350A, 37400A, 37450A, 37500A, 37550A, 37600A, 37650A, 37700A, 37750A, 37800A, 37850A, 37900A, 37950A, 38000A, 38050A, 38100A, 38150A, 38200A, 38250A, 38300A, 38350A, 38400A, 38450A, 38500A, 38550A, 38600A, 38650A, 38700A, 38750A, 38800A, 38850A, 38900A, 38950A, 39000A, 39050A, 39100A, 39150A, 39200A, 39250A, 39300A, 39350A, 39400A, 39450A, 39500A, 39550A, 39600A, 39650A, 39700A, 39750A, 39800A, 39850A, 39900A, 39950A, 40000A, 40050A, 40100A, 40150A, 40200A, 40250A, 40300A, 40350A, 40400A, 40450A, 40500A, 40550A, 40600A, 40650A, 40700A, 40750A, 40800A, 40850A, 40900A, 40950A, 41000A, 41050A, 41100A, 41150A, 41200A, 41250A, 41300A, 41350A, 41400A, 41450A, 41500A, 41550A, 41600A, 41650A, 41700A, 41750A, 41800A, 41850A, 41900A, 41950A, 42000A, 42050A, 42100A, 42150A, 42200A, 42250A, 42300A, 42350A, 42400A, 42450A, 42500A, 42550A, 42600A, 42650A, 42700A, 42750A, 42800A, 42850A, 42900A, 42950A, 43000A, 43050A, 43100A, 43150A, 43200A, 43250A, 43300A, 43350A, 43400A, 43450A, 43500A, 43550A, 43600A, 43650A, 43700A, 43750A, 43800A, 43850A, 43900A, 43950A, 44000A, 44050A, 44100A, 44150A, 44200A, 44250A, 44300A, 44350A, 44400A, 44450A, 44500A, 44550A, 44600A, 44650A, 44700A, 44750A, 44800A, 44850A, 44900A, 44950A, 45000A, 45050A, 45100A, 45150A, 45200A, 45250A, 45300A, 45350A, 45400A, 45450A, 45500A, 45550A, 45600A, 45650A, 45700A, 45750A, 45800A, 45850A, 45900A, 45950A, 46000A, 46050A, 46100A, 46150A, 46200A, 46250A, 46300A, 46350A, 46400A, 46450A, 46500A, 46550A, 46600A, 46650A, 46700A, 46750A, 46800A, 46850A, 46900A, 46950A, 47000A, 47050A, 47100A, 47150A, 47200A, 47250A, 47300A, 47350A, 47400A, 47450A, 47500A, 47550A, 47600A, 47650A, 47700A, 47750A, 47800A, 47850A, 47900A, 47950A, 48000A, 48050A, 48100A, 48150A, 48200A, 48250A, 48300A, 48350A, 48400A, 48450A, 48500A, 48550A, 48600A, 48650A, 48700A, 48750A, 48800A, 48850A, 48900A, 48950A, 49000A, 49050A, 49100A, 49150A, 49200A, 49250A, 49300A, 49350A, 49400A, 49450A, 49500A, 49550A, 49600A, 49650A, 49700A, 49750A, 49800A, 49850A, 49900A, 49950A, 50000A, 50050A, 50100A, 50150A, 50200A, 50250A, 50300A, 50350A, 50400A, 50450A, 50500A, 50550A, 50600A, 50650A, 50700A, 50750A, 50800A, 50850A, 50900A, 50950A, 51000A, 51050A, 51100A, 51150A, 51200A, 51250A, 51300A, 51350A, 51400A, 51450A, 51500A, 51550A, 51600A, 51650A, 51700A, 51750A, 51800A, 51850A, 51900A, 51950A, 52000A, 52050A, 52100A, 52150A, 52200A, 52250A, 52300A, 52350A, 52400A, 52450A, 52500A, 52550A, 52600A, 52650A, 52700A, 52750A, 52800A, 52850A, 52900A, 52950A, 53000A, 53050A, 53100A, 53150A, 53200A, 53250A, 53300A, 53350A, 53400A, 53450A, 53500A, 53550A, 53600A, 53650A, 53700A, 53750A, 53800A, 53850A, 53900A, 53950A, 54000A, 54050A, 54100A, 54150A, 54200A, 54250A, 54300A, 54350A, 54400A, 54450A, 54500A, 54550A, 54600A, 54650A, 54700A, 54750A, 54800A, 54850A, 54900A, 54950A, 55000A, 55050A, 55100A, 55150A, 55200A, 55250A, 55300A, 55350A, 55400A, 55450A, 55500A, 55550A, 55600A, 55650A, 55700A, 55750A, 55800A, 55850A, 55900A, 55950A, 56000A, 56050A, 56100A, 56150A, 56200A, 56250A, 56300A, 56350A, 56400A, 56450A, 56500A, 56550A, 56600A, 56650A, 56700A, 56750A, 56800A, 56850A, 56900A, 56950A, 57000A, 57050A, 57100A, 57150A, 57200A, 57250A, 57300A, 57350A, 57400A, 57450A, 57500A, 57550A, 57600A, 57650A, 57700A, 57750A, 57800A, 57850A, 57900A, 57950A, 58000A, 58050A, 58100A, 58150A, 58200A, 58250A, 58300A, 58350A, 58400A, 58450A, 58500A, 58550A, 58600A, 58650A, 58700A, 58750A, 58800A, 58850A, 58900A, 58950A, 59000A, 59050A, 59100A, 59150A, 59200A, 59250A, 59300A, 59350A, 59400A, 59450A, 59500A, 59550A, 59600A, 59650A, 59700A, 59750A, 59800A, 59850A, 59900A, 59950A, 60000A, 60050A, 60100A, 60150A, 60200A, 60250A, 60300A, 60350A, 60400A, 60450A, 60500A, 60550A, 60600A, 60650A, 60700A, 60750A, 60800A, 60850A, 60900A, 60950A, 61000A, 61050A, 61100A, 61150A, 61200A, 61250A, 61300A, 61350A, 61400A, 61450A, 61500A, 61550A, 61600A, 61650A, 61700A, 61750A, 61800A, 61850A, 61900A, 61950A, 62000A, 62050A, 62100A, 62150A, 62200A, 62250A, 62300A, 62350A, 62400A, 62450A, 62500A, 62550A, 62600A, 62650A, 62700A, 62750A, 62800A, 62850A, 62900A, 62950A, 63000A, 63050A, 63100A, 63150A, 63200A, 63250A, 63300A, 63350A, 63400A, 63450A, 63500A, 63550A, 63600A, 63650A, 63700A, 63750A, 63800A, 63850A, 63900A, 63950A, 64000A, 64050A, 64100A, 64150A, 64200A, 64250A, 64300A, 64350A, 64400A, 64450A, 64500A, 64550A, 64600A, 64650A, 64700A, 64750A, 64800A, 64850A, 64900A, 64950A, 65000A, 65050A, 65100A, 65150A, 65200A, 65250A, 65300A, 65350A, 65400A, 65450A, 65500A, 65550A, 65600A, 65650A, 65700A, 65750A, 65800A, 65850A, 65900A, 65950A, 66000A, 66050A, 66100A, 66150A, 66200A, 66250A, 66300A, 66350A, 66400A, 66450A, 66500A, 66550A, 66600A, 66650A, 66700A, 66750A, 66800A, 66850A, 66900A, 66950A, 67000A, 67050A, 67100A, 67150A, 67200A, 67250A, 67300A, 67350A, 67400A, 67450A, 67500A, 67550A, 67600A, 67650A, 67700A, 67750A, 67800A, 67850A, 67900A, 67950A, 68000A, 68050A, 68100A, 68150A, 68200A, 68250A, 68300A, 68350A, 68400A, 68450A, 68500A, 68550A, 68600A, 68650A, 68700A, 68750A, 68800A, 68850A, 68900A, 68950A, 69000A, 69050A, 69100A, 69150A, 69200A, 69250A, 69300A, 69350A, 69400A, 69450A, 69500A, 69550A, 69600A, 69650A, 69700A, 69750A, 69800A, 69850A, 69900A, 69950A, 70000A, 70050A, 70100A, 70150A, 70200A, 70250A, 70300A, 70350A, 70400A, 70450A, 70500A, 70550A, 70600A, 70650A, 70700A, 70750A, 70800A, 70850A, 70900A, 70950A, 71000A, 71050A, 71100A, 71150A, 71200A, 71250A, 71300A, 71350A, 71400A, 71450A, 71500A, 71550A, 71600A, 71650A, 71700A, 71750A, 71800A, 71850A, 71900A, 71950A, 72000A, 72050A, 72100A, 72150A, 72200A, 72250A, 72300A, 72350A, 72400A, 72450A, 72500A, 72550A, 72600A, 72650A, 72700A, 72750A, 72800A, 72850A, 72900A, 72950A, 73000A, 73050A, 73100A, 73150A, 73200A, 73250A, 73300A, 73350A, 73400A, 73450A, 73500A, 73550A, 73600A, 73650A, 73700A, 73750A, 73800A, 73850A, 73900A, 73950A, 74000A, 74050A, 74100A, 74150A, 74200A, 74250A, 74300A, 74350A, 74400A, 74450A, 74500A, 74550A, 74600A, 74650A, 74700A, 74750A, 74800A, 74850A, 74900A, 74950A, 75000A, 75050A, 75100A, 75150A, 75200A, 75250A, 75300A, 75350A, 75400A, 75450A, 75500A, 75550A, 75600A, 75650A, 75700A, 75750A, 75800A, 75850A, 75900A, 75950A, 76000A, 76050A, 76100A, 76150A, 76200A, 76250A, 76300A, 76350A, 76400A, 76450A, 76500A, 76550A, 76600A, 76650A, 76700A, 76750A, 76800A, 76850A, 76900A, 76950A, 77000A, 77050A, 77100A, 77150A, 77200A, 77250A, 77300A, 77350A, 77400A, 77450A, 77500A, 77550A, 77600A, 77650A, 77700A, 77750A, 77800A, 77850A, 77900A,			