



**UNITED ENGINEERING INC**  
Mechanical and Electrical Consulting Engineers

3645 Keele St. #105  
Toronto, ON, M3J 1M6  
Email: info@u-eng.ca  
T: (416) 398-1999  
F: (416) 398-1933

## **SITE INSTRUCTION**

**PROJECT:** HAMPTON MANOR  
25 BAKER HILL BLVD  
STOUFFVILLE, ONTARIO

**PROJECT NO #:** 14-016

**CONTRACT:** Electrical

**DATE** May 03, 2018

**SITE INSTRUCTION NO.:** E-23

---

THIS SITE INSTRUCTION IS NOT TO BE CONSTRUED AS A CHANGE IN THE CONTRACT PRICE, BUT IS ISSUED FOR CLARIFICATION ONLY. IF A CHANGE IN CONTRACT PRICE IS PERCEIVED, PROVIDE AN ITEMIZED BREAKDOWN OF ANY EXTRAS OR CREDITS WITHIN SEVEN (7) WORKING DAYS.

**PURPOSE:** Clarification.

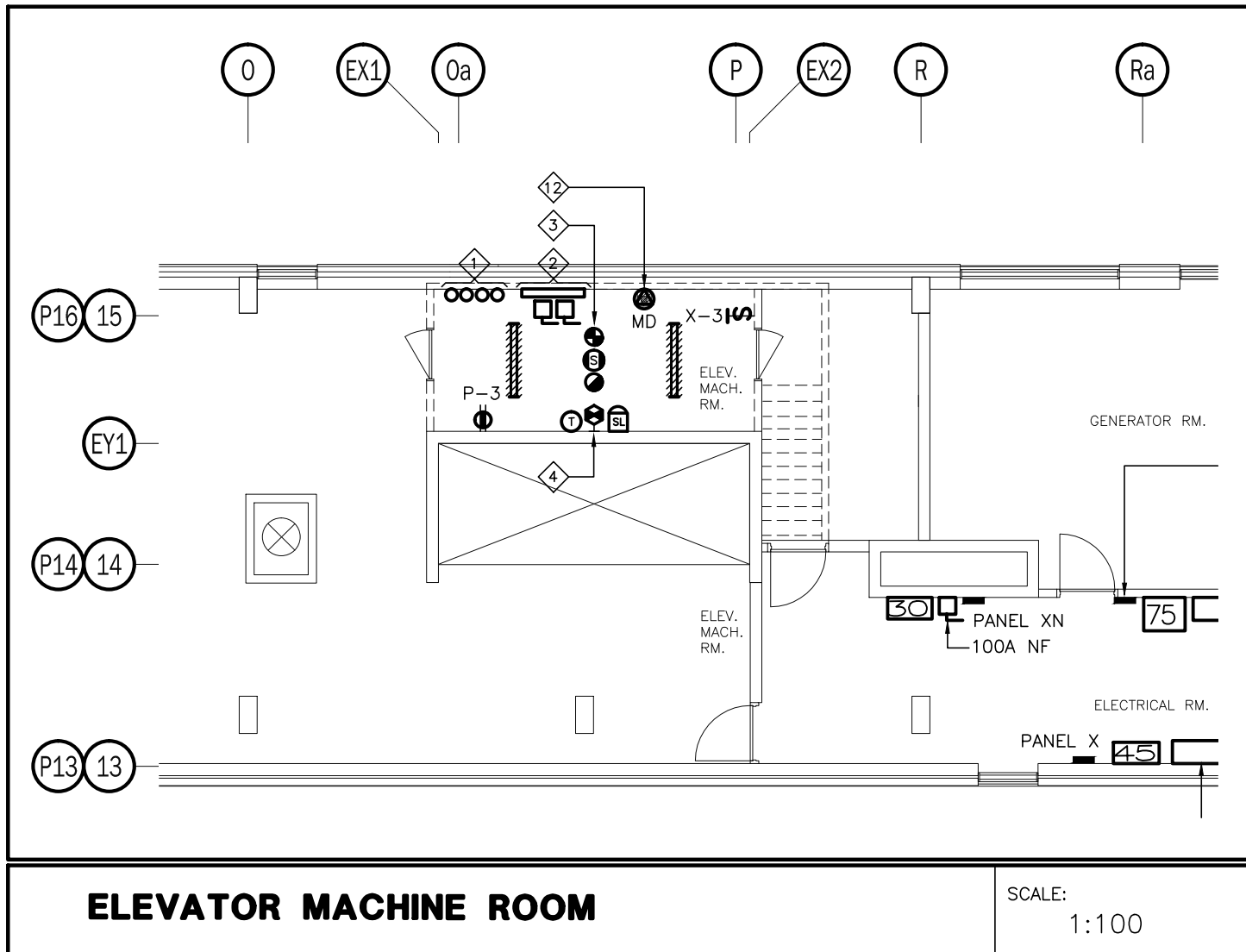
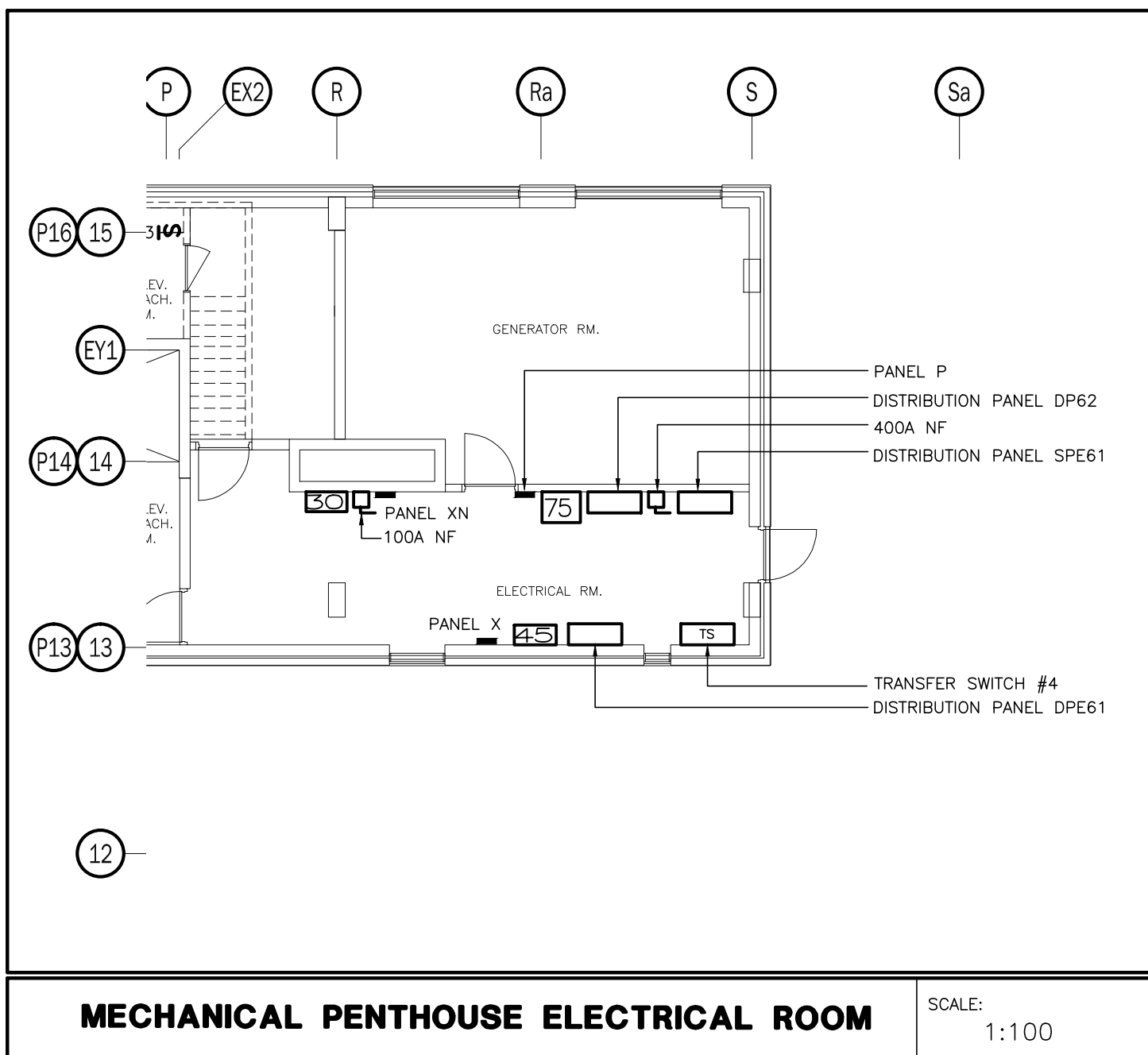
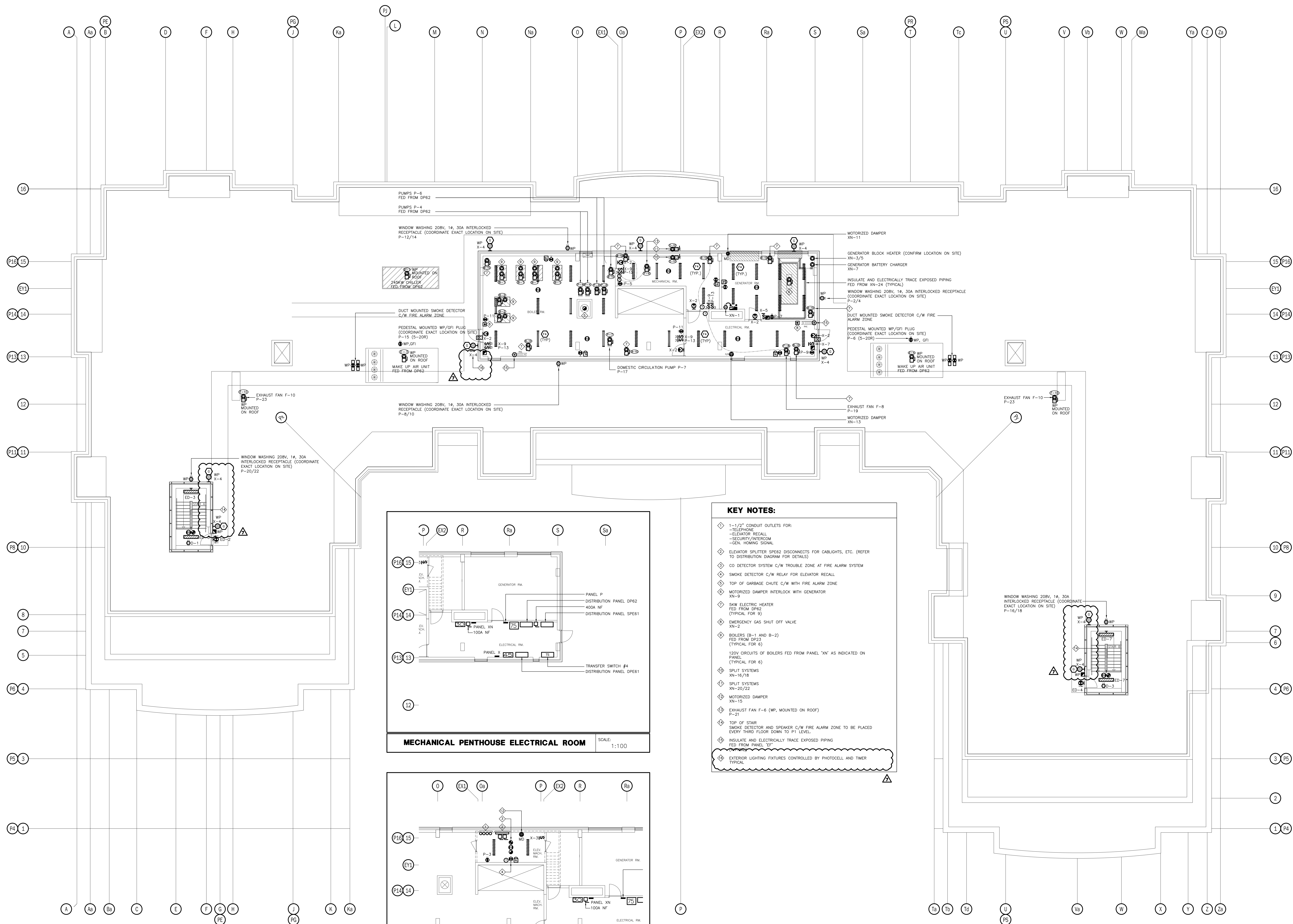
### **1.0 Reference Drawings E-8 (Mechanical Penthouse - Electrical) Issued**

- 1.1 Add: Type 'G' exterior lighting fixtures and fire pull stations as shown.  
Exterior lighting fixtures controlled by photocell and timer.

**PREPARED BY:**

\_\_\_\_\_  
Susan Pan  
Electrical Department

ISSUED TO ROYAL PINE HOMES,  
Cinzia Caruso, Cinzia@royalpinehomes.com;  
Vince Staffieri, vince@royalpinehomes.co  
FOR DISTRIBUTION TO ALL AFFECTED PARTIES.



#### KEY NOTES:

- 1-1/2" CONDUIT OUTLETS FOR:
  - TELEPHONE
  - ELEVATOR RECALL
  - SECURITY/INTERCOM
  - GEN. HOISTING SIGNAL
- ELEVATOR SPLITTER SPE62 DISCONNECTS FOR CABLIGHTS, ETC. (REFER TO DISTRIBUTION DIAGRAM FOR DETAILS)
- CO DETECTOR SYSTEM C/W TROUBLE ZONE AT FIRE ALARM SYSTEM
- SMOKE DETECTOR C/W RELAY FOR ELEVATOR RECALL
- TOP OF GARBAGE CHUTE C/W WITH FIRE ALARM ZONE
- MOTORIZED DAMPER INTERLOCK WITH GENERATOR
- SHW ELECTRIC HEATER FED FROM DP62 (TYPICAL FOR 9)
- EMERGENCY GAS SHUT OFF VALVE XN-2
- BOILERS (B-1 AND B-2) FED FROM DP62 (TYPICAL FOR 6)
- 120V CIRCUITS OF BOILERS FED FROM PANEL "XN" AS INDICATED ON PANEL (TYPICAL FOR 6)
- SPLIT SYSTEMS XN-16/18
- SPLIT SYSTEMS XN-20/22
- MOTORIZED DAMPER XN-15
- EXHAUST FAN F-6 (WP, MOUNTED ON ROOF) P-21
- TOP OF STAIR SMOKE DETECTOR AND SPEAKER C/W FIRE ALARM ZONE TO BE PLACED EVERY THIRD FLOOR DOWN TO P1 LEVEL
- INSULATE AND ELECTRICALLY TRACE EXPOSED PIPING FED FROM PANEL "P"
- EXTERIOR LIGHTING FIXTURES CONTROLLED BY PHOTOCELL AND TIMER TYPICAL

NO.	BY	DESCRIPTION	DATE
07	SP	REVISED AS PER SI E-23	2018-05-03
06	CM	REVISED AS PER SI E-3	2017-08-11
05	CM	ISSUED FOR CONSTRUCTION	2017-08-09
04	CM	PROGRESS FOR CONSTRUCTION	2017-07-18
03	CM	ISSUED FOR PERMIT	2016-12-28
02	CM	REVISED AS PER ESA COMMENTS AND FOR CLARIFICATION	2016-05-19
01	CM	ISSUED FOR TENDER	2016-03-15

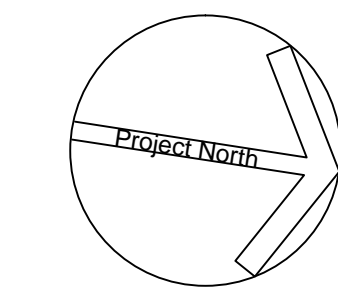
#### REVISIONS

This drawing, is an instrument of service, is provided by and is the property of United Engineering Inc. The contractor must verify and accept responsibility for all dimensions and conditions on site and must notify United Engineering Inc. of any discrepancy before proceeding.

United Engineering Inc. is not responsible for the accuracy of Architectural, structural, interior design, etc. on this drawing.

Refer to the appropriate trade drawings before proceeding with any work. Installation must conform to all applicable codes and requirements of the authorities having jurisdiction.

This drawing is not to be scaled, all symbols are graphic representations only.



**United Engineering Inc.**  
Mechanical Electrical Consulting Engineers  
3645 Keele Street, Suite 105,  
Toronto, Ontario, M3J 1M6  
Tel: (416) 398 1999, Fax: (416) 398 1933

TITLE  
**MECHANICAL PENTHOUSE ELECTRICAL**

PROJECT  
**PROPOSED RESIDENTIAL DEVELOPMENT  
25 BAKER HILL BLVD.**

**ROYAL PINE HOMES  
STOUFFVILLE, ONTARIO**

DRAWN	CM	CHECKED	MG	SCALE	1:100
DATE	SEPT. 2015	PROJECT	14-016	DRAWING	E-8
				OF	12