



UNITED ENGINEERING INC
Mechanical and Electrical Consulting Engineers

3645 Keele St. #105
Toronto, ON, M3J 1M6
Email: info@u-eng.ca
T: (416) 398-1999
F: (416) 398-1933

SITE INSTRUCTION

PROJECT: HAMPTON MANOR
25 BAKER HILL BLVD
STOUFFVILLE, ONTARIO

PROJECT NO: 14-016

CONTRACT: Electrical

DATE December 18, 2017

SITE INSTRUCTION: E-16

THIS SITE INSTRUCTION IS NOT TO BE CONSTRUED AS A CHANGE IN THE CONTRACT PRICE, BUT IS ISSUED FOR CLARIFICATION ONLY. IF A CHANGE IN CONTRACT PRICE IS PERCEIVED, PROVIDE AN ITEMIZED BREAKDOWN OF ANY EXTRAS OR CREDITS WITHIN SEVEN (7) WORKING DAYS.

Purpose: As per Mechanical SI M-11.

1.0 Reference Drawing E-2A (P1 Level - 2A) Issued


- 1.1 Add: Insulate and electrically trace for vertical storm pipes as shown. Fed from panel 'EF'.

2.0 Reference Drawing E-11 (Single Line Diagram) Issued

- 2.1 Revise: Storm sump pump 'P-9' to be 15HP (duplex) at 60/50A.

Note: The site instruction & drawings will be uploaded to FTP SITE

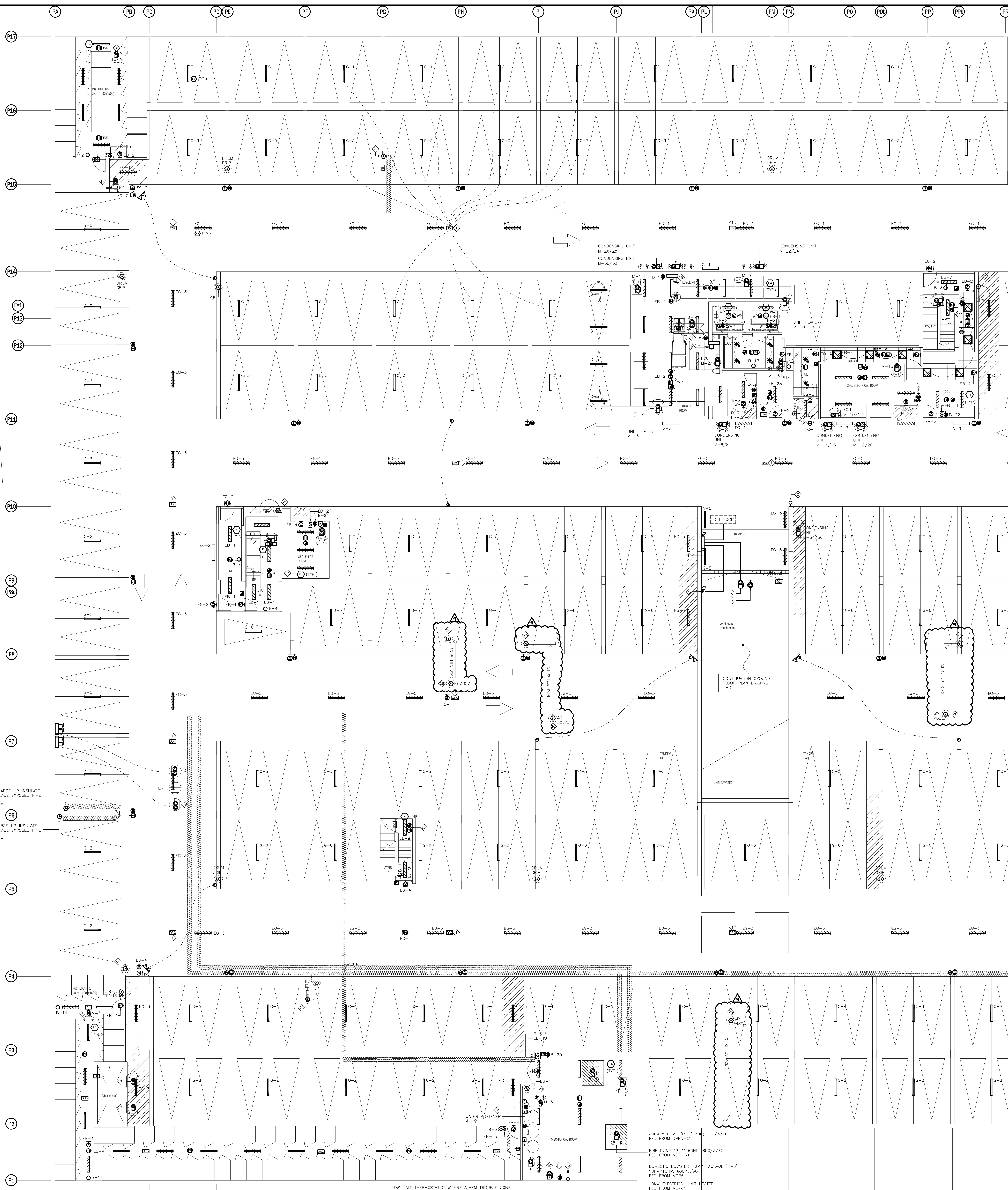
PREPARED BY:


Chula Meksavanh
Electrical Department

Project #14-016
Hampton Manor

ISSUED TO ROYAL PINE HOMES,
Cinzia Caruso, Cinzia@royalpinehomes.com;
Vince Staffieri, vince@royalpinehomes.com
FOR DISTRIBUTION TO ALL AFFECTED PARTIES.

cc. GRAZIANI + CORAZZA ARCH. INC., Gino Colangelo, GColangelo@gc-architects.com
DINEEN CONSTRUCTION CORP., Chuck Clark, cclark@dineen.com;
Jeffrey Ellis, jellis@dineen.com; Ric Wight, rwight@dineen.com



DRAWN CM	CHECKED MG	SCALE 1:100
DATE SEPT. 2015	PROJECT 14-016	DRAWING E-2A
		OF 12

