



Site Instruction

Royal Pine Homes
3550 Langstaff Road, Suite 200
Woodbridge, Ontario
L4L 9G3

SI 07

PROJECT	: Hampton Manor
PROJECT No	: 1136.13
DATE	: September 08, 2017

Attn: Vince Staffieri

Site instructions/memos and Addendums are issued only for the purpose of recording any clarification or interpretation of the contract documents or giving direction on problems resulting from field conditions. These memos are subject to the provisions of the contract documents and unless reviewed with and authorized by the Client, will not affect the contract. Should the Contractor require a change in the contract price or project schedule, he shall submit to the Client, prior to commencement of work outlined in this memo, an itemized proposal for approval.

Title: Under Stair Access at Parking Level

A103 : Door Schedule

- Adding doors D26-D28 for under stair access at P1 level.

A231 : Underground Parking

- Adding doors under stairs A, B & C for fan access.

CS201 : CS Parking Plan

- Adding curbs under stairs A, B & C.

Reason: As per Client & Contractor Request.

References: A103, A231 & CS201.

GRAZIANI + CORAZZA
ARCHITECTS INC

G. Colangelo Diploma Arch. Technology
Associate. Director of Contract Documents

Distribution:

Royal Pine Homes
ReXcon Construxion
ReXcon Construxion
Graziani + Corazza Architects

Cinzia Caruso
Lenny Simonelli
Lauren Sorichetti
Carmen Taranu

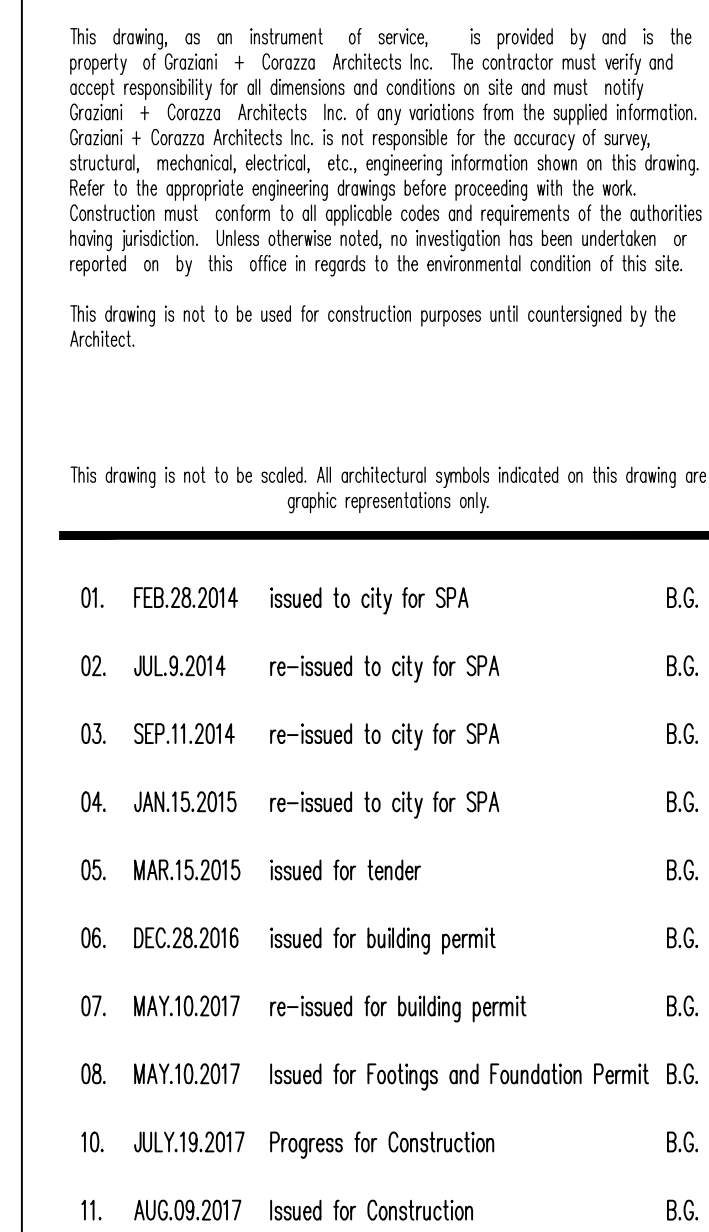
cinzia@royalpinehomes.com
rexcon.construxion@gmail.com
lsorichetti402@gmail.com
ctaranu@gc-architects.com

Door Schedule General Notes	
1.	all doors including frames requiring a fire protection rating shall comply with Subsection 3.1.8 of the OBC.
2.	all doors including frames requiring a fire protection rating shall be labelled indicating fire rating and be equipped with a listed self closing device, a listed positive latching mechanism and listed hardware.
3.	all residential suite doors opening onto a public corridor shall be designed not to lock automatically (article 3.3.4.5 of the OBC.)
4.	all doors that open into a corridor or other facility providing access to exit from a suite, or room not located within a suite shall comply with articles 3.3.1.10, 3.3.1.12 and 3.3.1.18 of the OBC.
5.	all doors in an access to exit, means of egress or exit shall comply with articles 3.4.6.10 to 3.4.6.15 inclusive of the OBC.
6.	all doors in a barrier free path of travel shall comply with article 3.8.3.3 of the OBC.
7.	all doors within a suite shall comply with section 9.6 of the OBC.
8.	for hardware refer to hardware schedule
9.	all doors equipped with a hold open device shall comply with article 3.1.8.12 of the OBC.
10.	all doors equipped with an electric strike required for security shall comply with article 3.3.1.12 of the OBC.
11.	all doors equipped with an electromagnetic lock shall comply with article 3.4.6.15 of the OBC.
12.	all washroom/bathroom doors to be equipped with a privacy lock.
13.	all steel doors equipped w/an electromagnetic lock to be 18 ga. steel and tack weld and fill edges.
14.	common area doors with glazing that are fire rated to be gwg or firelight glass.

Door abbreviations		
hmi - hollow metal insulated	pst - pressed steel	pt - paint
sc - solid core wood	al - aluminum	anod - anodized
hc - hollow core wood	wd - wood	varn - varnish
hm - hollow metal	alum - hollow metal	st - stained
ps - pressed steel insulated	es - electric strike	lam - plastic laminate finish
alum - aluminum	mil - electro magnetic lock	ss - stainless steel
comp - composite	hold - hold open device	ig - insulated glass
ri - re-inforced	cr - card reader	sq - sheet glass
fr - frosted glass	pb - push button	pg - plate glass
fg - fixed glass	md - motion detector	gwg - georgian wire glass
tg - tempered glass		

Abbreviations		
act active, ex: one leaf pair of doors	grom grommet	oskp outside knob pinned
adj adjustable, ex: shelves	h90 hold open at 90°	oskr outside knob rigid
af armoured front (of a lock) (covers fixing and cylinder screws)	h180 hold open at 180°	ost outside trim
	hc hollow core (door)	pa parallel arm (closer)
ahc architectural hardware consultant	hmd hollow metal door	pbs protected box strike
al aluminum	hm hollow metal frame	ph(s) phillips head (screws)
ams all machine screws	hnb hex nut & bolt	pl plate (floor, push, pull)
arm arm (or closer or door holder)	ho hold open (door closer)	pr pair
asa american standards association	hoa hold open arm (closer holder)	psf pressed steel frame
atms (closer to template with machine screws)	hr hour (fire door rating)	rab rabbeted
aws all wood screw	h-t hospital tip (butts)	rad radius
ald aluminum door	ht height	rb reverse bevel
bb ball bearing	id inside diameter	rc round corners (butts)
bv bevel(ed)	int interior	reg regular
b3v beveled 3 edges (kick plates)	ist inside trim	rem.mul removable mullion
bp brass pin (hinges)	j jamb	rf rounded or radius front
bs backset (lock) distance between edge of door and centre of knob	k key(s)	rf & st rounded front and strike (for rounded edge of door and centre of knob)
b&s brown and sharp (gauges)	ka keyed alike	rh(s) round head screws
	kal kalamain	rh(s) round head (reverse)
bt ball top (hinges)	kd keyed different	rm room
bdb back to back (butts)	k.d. knocked down (indicates that part of the assembly unit are separately packed to be assembled when required)	rp raw plug
c (c) centre or centreline		sa single acting (doors)
cb cement box (floor closers)		sc solid core (door)
ctbs cast box strike	kv key valve (closing device)	sc(s) screw(s)
c/c centre to centre,also, cut for cylinder	lbr less bottom rod (of a vertical rod type exit device)	sgl single
c/c cut for cylinder		sh shield
cut cut for thumb turn	l/c less cylinder (lock)	sl sleeve
cf channel iron frame	lhr(b) left hand reverse (bevel)	sms sheet metal screws
ck construction key	lh left hand	s-ms strike machine screws
corr corridor	l.l. lead lined (doors)	sp.hd spanner head (screws)
ctc centre to centre	l.p. light proof	spdle spindle
ctsk countersunk	l.s. lead shield	ss stainless steel
cyl cylinder (lock)	m metal	std standard
da double-acting	mx maximum	st-ms strike template with machine screws
dbl double	mc metal clad (door)	sw self tapping screws
deg degrees	md metal door	sw swivel
dps dust proof strike	mt metal frame	tb thru-bolts
dr door	mk(ed) masterkey(ed)	tbgn thru-bolts and grommet nuts
dt dummy trim	min minimum	tdn thru-bolts and nuts
ea each	ms machine screws	tc tin clad
emk emergency	m x.m metal by metal (door and frame)	tgb toggle bolt
exp.sh expansion shield	nb nylon bearing	tk turn knob
ext exterior	nck no change key	tms template machine screws
fbt flat button tip	nr no rose	tp thumb piece
f.d. fire door	nsp non removable pin (butts)	ul underwriters label
fns flat head screw	ns narrow stile	ulc Underwriters Label Canada
f.l. fusible link	oa overall	wd wood door
fl floor	ob oille bearing (hinges)	wbs (X) wrought box strike
fr frame	obs open back strike (permits inactive leaf of doors to open independently)	wf wood frame
ft foot or feet	od outside diameter	ws wood screws
ga gauge	oh(s) oval head (screws)	x-bar cross bar
gm/gM great grand master key (ed)	opb opening	
gm/g grand master key (ed)	os outside	
gn- grommet nut (& bolt)		

Door Schedule																							
	door no.	location		type	size			doors				frames				threshold		remarks					
		from	to		width	height	thickness	material	glass	fire rating	finish	type	material	glass	fire rating	finish	material		finish				
Underground	b01	garage	lockers	d	965	2130	45	hm		1.5hr	pt	dfl	hm		45min	pt							
	b02	garage	lockers	d	965	2130	45	hm		1.5hr	pt	dfl	hm		45min	pt							
	b03	garage	a/i	b	965	2130	45	hm	gwg	1.5hr	pt	dfl	hm		1.5hr	pt			panic				
	b04	garage	a/i	b	965	2130	45	hm	gwg	1.5hr	pt	dfl	hm		1.5hr	pt			panic				
	b05	garage	sec. electrical room	d	965	2130	45	hm		1.5hr	pt	dfl	hm		45min	pt							
	b06	garage	lockers	d	965	2130	45	hm		1.5hr	pt	dfl	hm		45min	pt							
	b07	garage	mechanical room	d	2/965	2130	45	hm		1.5hr	pt	dfl	hm		1.5hr	pt							
	b08	garage	garbage room	d	2/965	2130	45	hm		1.5hr	pt	dfl	hm		1.5hr	pt							
	b09	reserved																					
	b10	garage room	bulk	d	965	2130	45	hm		1.5hr	pt	dfl	hm		1.5hr	pt							
	b11	garage	bulk	d	965	2130	45	hm		1.5hr	pt	dfl	hm		1.5hr	pt							
	b12	a/i	elevator lobby	b1	965	2130	45	hm	gwg	1.5hr	pt	dfl	hm		1.5hr	pt			mag lock, ADO, panic, electric strike				
	b13	garage	a/i	b	965	2130	45	hm	gwg	1.5hr	pt	dfl	hm		1.5hr	pt			panic, ADO				
	b14	garage	sec. electrical room	d	2/965	2130	45	hm		1.5hr	pt	dfl	hm		45min	pt							
	b15	garage	ccu	d	965	2130	45	hm		1.5hr	pt	dfl	hm		45min	pt							
	b16	garage	a/i	b	965	2130	45	hm	gwg	1.5hr	pt	dfl	hm		1.5hr	pt			panic				
	b17	garage	a/i	b	965	2130	45	hm	gwg	1.5hr	pt	dfl	hm		1.5hr	pt			panic				
	b18	garage	a/i	b	965	2130	45	hm	gwg	1.5hr	pt	dfl	hm		1.5hr	pt			panic				
	b19	garage	lockers	d	965	2130	45	hm		1.5hr	pt	dfl	hm		45min	pt							
	b20	garage	main electrical room	d	965	2130	45	hm		1.5hr	pt	dfl	hm		45min	pt							
	b21	garage	main electrical room	d	2/965	2130	45	hm		1.5hr	pt	dfl	hm		45min	pt							
	b22	locker	exhaust shaft	d	915	915	45	hm			pt	dfl	hm			pt			lock set				
	b23	garage	FA shaft	d	915	915	45	hm			pt	dfl	hm			pt			lock set				
	b24	locker	exhaust shaft	d	915	915	45	hm			pt	dfl	hm			pt			lock set				
	b25	garage	FA shaft	d	915	915	45	hm			pt	dfl	hm			pt			lock set				
	b26	stair "B"	stair "B" mid landing	d	915	915	45	hm			pt	dfl	hm			pt			lock set				
	b27	stair "C"	stair "C" mid landing	d	915	915	45	hm			pt	dfl	hm			pt			lock set				
	b28	stair "A"	stair "A" mid landing	d	915	915	45	hm			pt	dfl	hm			pt			lock set				
Ground floor	g01	exit corridor	exterior	a	915	2450		alum	tg		anod.	dfl	alum			anod.			panic, weather stripping				
	g02	corridor	lockers	d	965	2130	45	hm		1.5hr	pt	dfl	hm		1.5hr	pt			ADO, panic				
	g03	corridor	corridor	d	2/965	2450	45	hm		1.5hr	pt	dfl	hm		1.5hr	pt			ADO, privacy lock				
	g04	corridor	washroom	d	965	2130	45	hm		45min	pt	dfl	hm		45min	pt			ADO, privacy lock				
	g05	corridor	washroom	d	965	2130	45	hm		45min	pt	dfl	hm		45min	pt			ADO, electric strike				
	g06	corridor	amenity	b	2/965	2130	45		gwg	45min	pt	dfl	hm		45min	pt			pocket door				
	g07	amenity	kitchen	d	965	2130	45	sc			pt	dfl	wd			pt							
	g08	amenity	closet	d	810	2130	45	hm			pt	dfl	hm			pt							
	g09	amenity	amenity	b	1200	2130	45	sc			pt	dfl	wd			pt			pocket door				
	g10	amenity	amenity	b	1200	2130	45	sc			pt	dfl	wd			pt			pocket door				
	g11	amenity	exterior	a	2/965	2450		alum	tg		anod.	dfl	alum			anod.			weather stripping, ADO, panic				
	g12	amenity	exterior	a	2/965	2450		alum	tg		anod.	dfl	alum			anod.			weather stripping, panic				
	g13	corridor	amenity	b	965	2130	45		gwg	45min	pt	dfl	alum		45min	pt			ADO, electric strike				
	g14	lobby	a/i	a	965	2450		alum	tg		anod.	dfl	alum			anod.			panic, weather stripping				
	g15	a/i	exterior	s1	2/915	2450		alum	tg		anod.	dfl	alum			anod.							
	g16	lobby	c.a.c.f	d	965	2130	45	hm		1.5hr	pt	dfl	hm		1.5hr	pt							
	g17	exterior	mail room	a	965	2450		alum	tg		anod.	dfl	alum			anod.			panic, weather stripping				
	g18	concierge	storage	d	965	2130	45	hm		45min	pt	dfl	hm		45min	pt							
	g19	amenity	electrical room	d	965	2450	45	hm		1.5hr	pt	dfl	hm		1.5hr	pt							
	g20	corridor	property manager	d	965	2450	45	hm		45min	pt	dfl	hm		45min	pt			ADO				
	g21	corridor	univ. washroom	d	965	2130	45	hm		45min	pt	dfl	hm		45min	pt			ADO, electric strike				
	g22	corridor	amenity	b	965	2130	45		gwg	45min	pt	dfl	hm		45min	pt			ADO, electric strike				
	g23	corridor	univ. washroom	d	965	2130	45	hm		45min	pt	dfl	hm		45min	pt			ADO, electric strike				
	g24	pet wash	exterior	a	965	2450		alum	tg		anod.	dfl	alum			anod.			panic, ADO, weather stripping				
	g25	corridor to stair B	exterior	a	915	2450		alum	tg		anod.	dfl	alum			anod.			panic, weather stripping				
	g26	corridor	corridor	a	965	2450		alum	tg		anod.	dfl	alum			anod.			ADO				
	g27	corridor	lockers	d	965	2130	45	hm		1.5hr	pt	dfl	hm		1.5hr	pt							
	g28	exit corridor	exterior	a	915	2450		alum	tg		anod.	dfl	alum			anod.			panic, weather stripping				
Typical Doors	2hr - 7hr fire			d01	corridor	lockers	d	965	2130	45	hm		45min	pt	dfl	hm		45min	pt				
				d02	corridor	corridor	a1	2/965	2450	45	hm	gwg	1.5hr	pt	dfl	hm		1.5hr	pt				
				d03	corridor	lockers	d	965	2130	45	hm		45min	pt	dfl	hm		45min	pt				
	Typical suite 2hr - 7hr fire			s01	corridor	suite	d	965	2130	45	sc		20min	wd	dfl	redi		20min	pt			door viewer, door contact	
				s02	bedroom		d	810	2130	35	hc			pt	dfl	wd			pt				
				s02a	bedroom		d	915	2130	35	hc			pt	dfl	wd			pt				
				s03	den		d	2/860	2130	35	hc			pt	dfl	wd			pt				
				s03a	den		d	760	2130	35	hc			pt	dfl	wd			pt				
				s04	bathroom		d	760	2130	35	hc			pt	dfl	wd			pt				
				s04a	bathroom		d	915	2130	35	hc			pt	dfl	wd			pt				
				s04b	bathroom		d	810	2130	35	hc			pt	dfl	wd			pt				
				s04c	bathroom		d	660	2130	35	hc			pt	dfl	wd			pt				
				s05	washer/dryer		d	810	2130	35	hc			pt	dfl	wd			pt				
				s05a	washer/dryer		d	2/610	2130	35	hc			pt	dfl	wd			pt				
				s05b	washer/dryer		d	760	2130	35	hc			pt	dfl	wd			pt				
				s06	closet		s1	varies	2130	35	hc			pt	varies	wd			pt				
				s07	closet		d	610	2130	35	hc			pt	dfl	wd			pt				
				s07a	closet		d	2/610	2130	35	hc			pt	dfl	wd			pt				
				s07b	closet		d	760	2130	35	hc			pt	dfl	wd			pt				
				s08	w.i.c.		d	610	2130	35	hc			pt	dfl	wd			pt				
				s08a	closet		d	810	2130	35	hc			pt	dfl	wd			pt				
	Mechanical Penthouse	typical corridor			t01	corridor	exit stair	b	860	2130	45	hm	gwg	1.5hr	pt	dfl	hm		1.5hr	pt			panic
					t01a	stair landing	stair landing	b	860	2130	45	hm	gwg	1.5hr	pt	dfl	hm		1.5hr	pt			panic
					t02	corridor	electric closet	d	2/915	2130	45	hm		1.5hr	pt	dfl	hm		1.5hr	pt			surface bolt
					t03	corridor	garbage chute room	d	965	2130	45	hm		45min	pt	dfl	hm		45min	pt			
Main floor	m01	electrical room	exterior	d	915	2130	45	hm			pt	dfl	hm			pt				weather stripping			
	m02	electrical room	generator & elec. room	d	915	2130	45	hm		45min	pt	dfl	hm		45min	pt							
	m03	electrical room	elev. machine room	d	915	2130	45	hm			pt	dfl	hm			pt							
	m04	boiler room	elev. machine room	d	915	2130	45	hm		45min	pt	dfl	hm		45min	pt							
	m05	boiler room	electrical room	d	915	2130	45	hm		45min	pt	dfl	hm		45min	pt							
	m06	boiler room	exterior	d	915	2130	45	hm		45min	pt	dfl	hm		45min	pt				weather stripping			
	m07	stair "A"	exterior	d	860	2130	45	hm		45min	pt	dfl	hm		45min	pt				weather stripping			
	m08	stair "B"	exterior	d	860	2130	45	hm			pt	dfl	hm			pt				weather stripping			



LEVEL		
	PL	SIZE
7th	12	(900X1200)
6th	12	(900X1200)
5th	12	(900X1200)
4th	12	(900X1200)
3rd	12	(900X1200)
2nd	12	(900X1200)
Grd	12	(900X1200)
P1	95	(1200X1500)
	1	(1650X1500)
	2	(1800X1500)
TOTAL	182	

Q2. SEP108.2017 S107 SHIRT ARM & ACCESS 86
Q1. AUG.31.2017 S105 SHIRT CURB & DOORS 86

issued for revisions



**GRAZIANI
+
CORAZZA**
ARCHITECTS INC.

1320 Sheppard Ave. Suite 100, Midlandpark Ontario
Phone: 905.766.2621 Fax: 905.766.2618

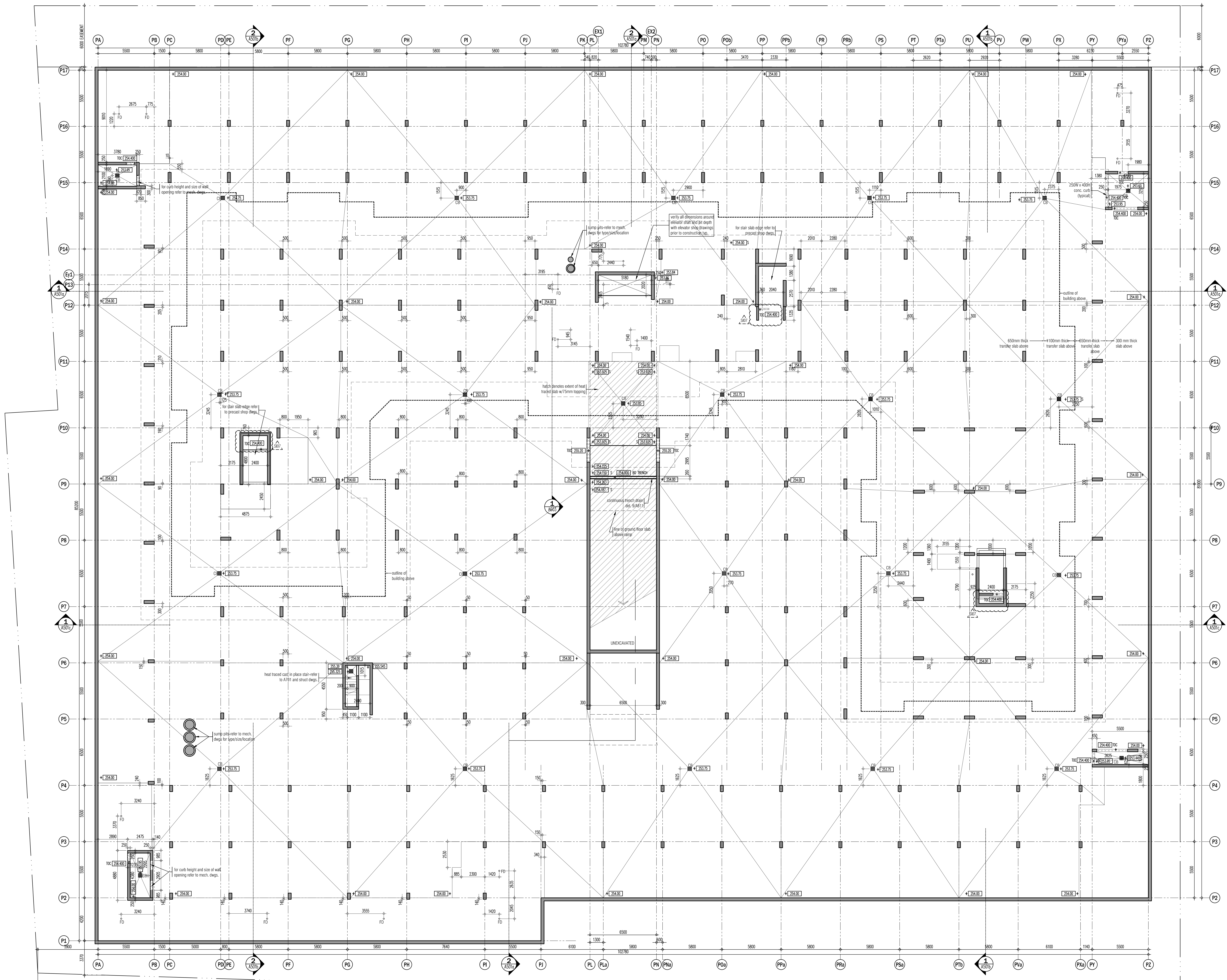
www.graziandcorazza.com

	VISITOR	RESIDENTIAL	TOTAL
G	40	-	40
P1	-	279 (inc.60T)	279 (inc.60T)
TOTAL	40	279 (inc.60T)	319 (inc.60T)

25 BAKER HILL BLVD.
 STOUFFVILLE ROYAL PINES HOMES ONTARIO

Project Architect: B. GRAZIANI
 Assistant Designer: R. LINCOLN
 Drawn By: S.G.
 Checked By: D. BIASE
 Plot Date: Aug. 16, 2017
 Job # 1136.13

PARKING PLAN



This drawing, as an instrument of service, is provided by and is the property of Grazianni & Corazza Architects Inc. The architect must verify and accept responsibility for all dimensions and conditions on site and must verify. Grazianni & Corazza Architects Inc. is not responsible for the accuracy of any structural, mechanical, electrical, or civil engineering information shown on this drawing. The structural engineering drawings shall be provided to the architect. Construction must conform to all applicable codes and requirements of the authorities having jurisdiction. Other otherwise noted, no fieldwork has been undertaken or reported on by this office in regards to the environmental condition of this site. This drawing is not to be used for construction purposes until counterchecked by the architect.

This drawing is not to be used for construction purposes until counterchecked by the architect.

- | NO. | DATE | DESCRIPTION | BY |
|-----|--------------|---|------|
| 01. | FEB.28.2014 | issued to city for SPA | B.G. |
| 02. | JUL.9.2014 | re-issued to city for SPA | B.G. |
| 03. | SEP.11.2014 | re-issued to city for SPA | B.G. |
| 04. | JAN.15.2015 | re-issued to city for SPA | B.G. |
| 05. | MAR.15.2015 | issued for tender | B.G. |
| 06. | DEC.28.2016 | issued for building permit | B.G. |
| 07. | MAY.10.2017 | re-issued for building permit | B.G. |
| 08. | MAY.10.2017 | issued for Footings and Foundation Permit | B.G. |
| 09. | JULY.07.2017 | issued for Construction | B.G. |
| 10. | JULY.19.2017 | Progress for Construction | B.G. |

- | NO. | DATE | DESCRIPTION | BY |
|-----|--------------|-------------------------|------|
| 02. | SEPT.08.2017 | 5107 UNDER STAR ACCESS | B.G. |
| 01. | AUG.31.2017 | 5105 SHAFI CURBS & DOOR | B.G. |

issued for revisions

GRAZIANI & CORAZZA ARCHITECTS INC.
1337 Denison Street, Suite 101, Richmond Hill, Ontario L4B 1C1
Phone: 905.706.2621 Fax: 905.706.2644 www.grazzianni.com

PROPOSED RESIDENTIAL DEVELOPMENT

25 BAKER HILL BLVD.

ROYAL PINES HOMES

STONEYVILLE ONTARIO

Project Architect: B. GRAZIANI

Assistant Designer: R. LINCOLN

Drawn By: S.G.

Checked By: D. BIASE

Plot Date: Aug. 8, 2017

Job #: 1134.13

PARKING PLAN

1:125 CS-A201

TITLEBLOCK SIZE: 915 x 1400