



UNITED ENGINEERING INC
Mechanical and Electrical Consulting Engineers

3645 Keele St. #105
Toronto, ON, M3J 1M6
Email: info@u-eng.ca
T: (416) 398-1999
F: (416) 398-1933

SITE INSTRUCTION

PROJECT: HAMPTON MANOR
25 BAKER HILL BLVD
STOUFFVILLE, ONTARIO

PROJECT NO: 14-016

CONTRACT: Mechanical

DATE August 16, 2016

SITE INSTRUCTION: M-2

THIS SITE INSTRUCTION IS NOT TO BE CONSTRUED AS A CHANGE IN THE CONTRACT PRICE, BUT IS ISSUED FOR CLARIFICATION ONLY. IF A CHANGE IN CONTRACT PRICE IS PERCEIVED, PROVIDE AN ITEMIZED BREAKDOWN OF ANY EXTRAS OR CREDITS WITHIN SEVEN (7) WORKING DAYS.

Purpose: To add gas connections and hose bibbs on the 7th floor as per the client request.

1.0 Reference Drawing M-1 (Site Plan – Mechanical) Issued

- 1.1 Revise: Gas load schedule and the note for the proposed gas meter to suit the change of the load as per the 7th floor plan.

2.0 Reference Drawing M-30 (Part 7th Floor Plan – Mechanical) Issued

- 2.1 Add: 20ø mm gas connections and 20ø mm hose bibbs in the suites '701' to '705', '708' to '712' and '715' to '717'. Resize gas pipes to suit the change of the load.

3.0 Reference Drawing M-31 (Part 7th Floor Plan – Mechanical) Issued

- 3.1 Add: 20ø mm gas connections and 20ø mm hose bibbs in the suites '701', '711' to '712' and '715' to '717'. Resize gas pipes to suit the change of the load.

4.0 Reference Drawing M-32 (Part 7th Floor Plan – Mechanical) Issued

- 4.1 Add: 20ø mm gas connections and 20ø mm hose bibbs in the suites '702' to '704' and '709' to '710'. Resize gas pipes to suit the change of the load.

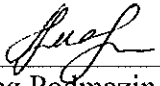
**Site Instruction #M-2
Hampton Manor**

5.0 Reference Drawing M-33 (Part 7th Floor Plan – Mechanical) Issued

5.1 Add: 20ø mm gas connections and 20ø mm hose bibbs in the suites '705' and '708'. Resize gas pipes to suit the change of the load.

6.0 Reference Drawing M-34 (Penthouse Floor Plan – Mechanical) Issued

6.1 Resize: Gas pipes to suit the change of the load as per the 7th floor.

PREPARED BY: 
Oleg Podimazin
Mechanical Department

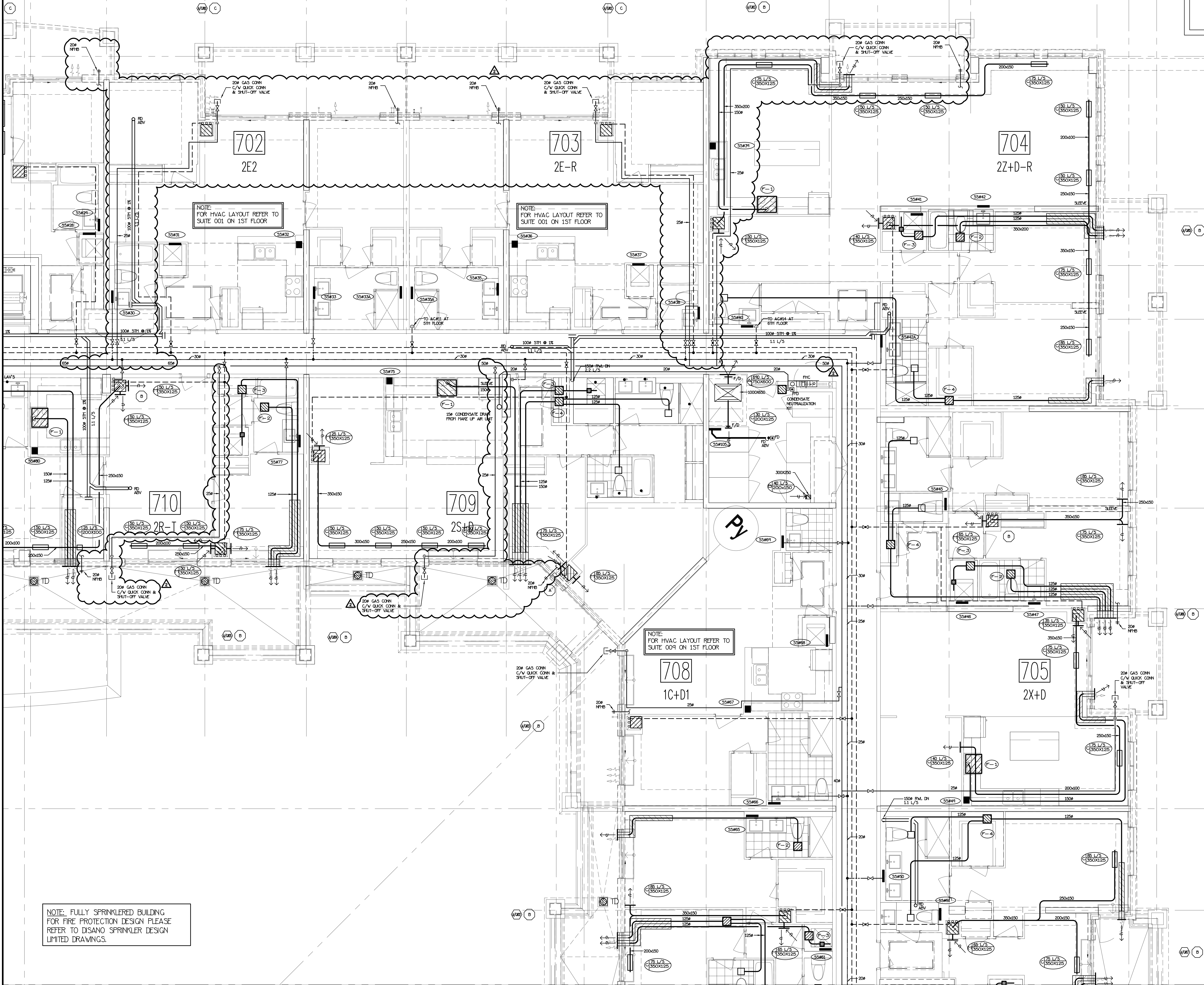
ISSUED TO ROYAL PINE HOMES,
FRANK CAROGIOIELLO, frank@royalpinehomes.com;
LOUIE PANTALEO, Louie@royalpinehomes.com;
KELLY WATSON, Kelly@royalpinehomes.com
FOR DISTRIBUTION TO ALL AFFECTED PARTIES.

cc. GRAZIANI + CORAZZA ARCH. INC.,
GINO COLANGELO, GColangelo@gc-architects.com
DINEEN CONSTRUCTION CORP., RIC WIGHT, rwight@dineen.com

DRAWN GC	CHECKED BT	SCALE 1:200
DATE JUNE 2015	PROJECT 14-016	DRAWING M-1
		OF 42

TYPICAL SUITE NOTES:

- LAST 1.8M OF EXHAUST DUCTWORK C/W INSULATION & VAPOUR BARRIER (TYPICAL)
- VENTILATION CONTRACTOR SHALL SUPPLY & INSTALL THE FLEXIBLE DRYER HOSE FROM DRYER TO THE RIGID EXHAUST DUCT UNLESS OTHERWISE NOTED BY OWNER
- MECHANICAL CONTRACTOR SHALL MAKE ALL DIRECT PLUMBING & DRAINAGE CONNECTIONS TO THE DISHWASHER (C/W SHUT-OFF VALVE & COPPER SUPPLY PIPE)



NOTE: FULLY SPRINKLERED BUILDING FOR FIRE PROTECTION DESIGN PLEASE REFER TO DISANO SPRINKLER DESIGN LIMITED DRAWINGS.

NO.	BY	DESCRIPTION	DATE
2	OP	REVISED AS PER SITE INSTRUCTION 11-2	AUG/16/2016
1	L1	ISSUED FOR TENDER	MAR/21/2016

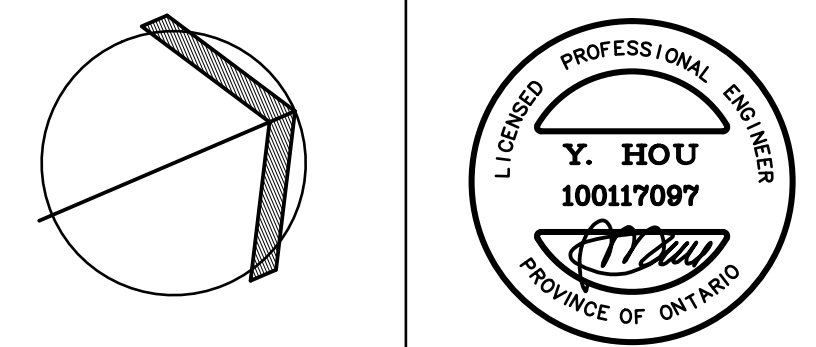
NO.	BY	DESCRIPTION	DATE
1	L1	ISSUED FOR TENDER	MAR/21/2016

This drawing, is an instrument of service, is provided by and is the property of United Engineering Inc. The contractor must verify and accept responsibility for all dimensions and conditions on site and must notify United Engineering Inc. of any discrepancy before proceeding.

United Engineering Inc. is not responsible for the accuracy of Architectural, structural, interior design, etc. on this drawing.

Refer to the appropriate trade drawings before proceeding with any work. Installation must conform to all applicable codes and requirements of the authorities having jurisdiction.

This drawing is not to be scaled, all symbols are graphic representations only.



United Engineering Inc.
Mechanical Electrical Consulting Engineers
3045 Keele Street, Suite 105,
Toronto, Ontario, M3J 1W6
Tel: (416) 398 1999, Fax: (416) 398 1933

PART 7TH FLOORS PLAN MECHANICAL			
PROJECT 25 BAKER HILL BLVD. ROYAL PINE HOMES			
STOUFFVILLE, ONTARIO PROPOSED RESIDENTIAL DEVELOPMENT			
DRAWN GC	CHECKED BT	SCALE 1:50	DRAWING M-32
DATE JUNE 2015	PROJECT 14-016	OF 42	

