



UNITED ENGINEERING INC
Mechanical and Electrical Consulting Engineers

3645 Keele St. #105
Toronto, ON, M3J 1M6
Email: info@u-eng.ca
T: (416) 398-1999
F: (416) 398-1933

SITE INSTRUCTION

PROJECT: HAMPTON MANOR
25 BAKER HILL BLVD
STOUFFVILLE, ONTARIO

PROJECT NO: 14-016

CONTRACT: Electrical

DATE October 18, 2017

SITE INSTRUCTION: E-13

THIS SITE INSTRUCTION IS NOT TO BE CONSTRUED AS A CHANGE IN THE CONTRACT PRICE, BUT IS ISSUED FOR CLARIFICATION ONLY. IF A CHANGE IN CONTRACT PRICE IS PERCEIVED, PROVIDE AN ITEMIZED BREAKDOWN OF ANY EXTRAS OR CREDITS WITHIN SEVEN (7) WORKING DAYS.

Purpose: As per client request, interior designer and shop drawings and for clarifications.

1.0 Reference Drawing E-3A (Ground Floor - A) Issued

- 1.1 Add: One (1) light switch and one (1) type 'C' lighting fixture in front of laundry room in suites 111 and 119.
- 1.2 Add: Six (6) type 'SC-01' wall sconce fixtures at lobby.

2.0 Reference Drawing E-4A (2nd Floor - A) Issued

- 2.1 Relocate: One (1) switch receptacle, one (1) phone and one (TV) outlets and three (3) receptacles and suite security panel in suite 222.

Note: This also applies to suites 205, 305, 323, 405, 423, 505, 523, 604 and 619.

3.0 Reference Drawing E-9B (Details - B) Issued

- 3.1 Clarify: Lighting type 'WS1' to be 'SC-01' in Interior designer lighting fixture schedule.

Project #14-016
Hampton Manor

4.0 Reference Drawing E-11 (Single Line Diagram) Issued

4.1 Revise: Fuse size for chiller to be 400A to suit shop drawings.

Note: The site instruction & drawings will be uploaded to FTP SITE

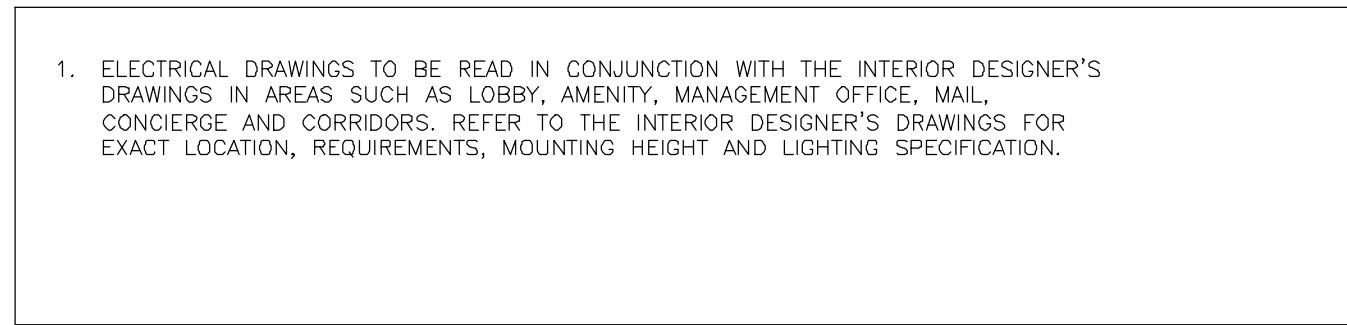
PREPARED BY:




Chula Meksavanh
Electrical Department

ISSUED TO ROYAL PINE HOMES,
Cinzia Caruso, Cinzia@royalpinehomes.com;
Vince Staffieri, vince@royalpinehomes.com
FOR DISTRIBUTION TO ALL AFFECTED PARTIES.

cc. GRAZIANI + CORAZZA ARCH. INC., Gino Colangelo, GColangelo@gc-architects.com
DINEEN CONSTRUCTION CORP., Chuck Clark, cclark@dineen.com;
Jeffrey Ellis, jellis@dineen.com; Ric Wight, rwight@dineen.com



The image contains two circular logos. The left logo is the 'Project North' logo, featuring a stylized 'N' and the text 'Project North'. The right logo is a professional engineer's seal for the Province of Ontario, featuring the text 'LICENSED PROFESSIONAL ENGINEER', 'X. SONG', '12081411', and 'PROVINCE OF ONTARIO'.



United Engineering Inc.
 Mechanical Electrical Consulting Engineers
 3645 Keele Street, Suite 105,
 Toronto, Ontario, M3J 1M6
 Tel: (416) 398 1999, Fax: (416) 398 1933

TITLE GROUND FLOOR PLAN - A ELECTRICAL		
PROJECT PROPOSED RESIDENTIAL DEVELOPMENT 25 BAKER HILL BLVD.		
ROYAL PINE HOMES STOUFFVILLE, ONTARIO		
DRAWN CM	CHECKED MG	SCALE 1:75
DATE SEPT. 2015	PROJECT 14-016	DRAWING E-3A OF 12




Ta Tb Td U

DRAWN CM	CHECKED MG	SCALE 1:75
DATE SEPT. 2015	PROJECT 14-016	DRAWING E-4A
		OF 12

SIMILAR UNIT EXC REFER TO DWS. UNIT 014)	
--	--

1	JUNCTION BOX FOR TRI-SORT GARBAGE SYSTEM
2	TOP OF STAIR SMOKE DETECTOR AND SPEAKER C/W FIRE ALARM ZONE
3	DOOR HOLD OPEN DEVICE INTERCONNECTED TO FIRE ALARM SYSTEM TO RELEASE UPON ACTIVATION OF FIRE ALARM SYSTEM INTERCONNECTED TO LOCALIZED SMOKE DETECTORS
4	CONFIRM ALL DIMENSIONS OF LIGHTING FIXTURES ON SITE WITH CLIENT PRIOR TO



United Engineering Inc.
 Mechanical Electrical Consulting Engineers
 3645 Keele Street, Suite 105,
 Toronto, Ontario, M3J 1M6
 Tel: (416) 398 1999, Fax: (416) 398 1933

TITLE	2ND FLOOR PLAN - A ELECTRICAL
-------	----------------------------------

PROJECT
PROPOSED RESIDENTIAL DEVELOPMENT
25 BAKER HILL BLVD.

ROYAL PINE HOMES
STOUFFVILLE, ONTARIO

DRAWN CM	CHECKED MG	SCALE 1:75
DATE SEPT. 2015	PROJECT 14-016	DRAWING E-4A
		OF 12

