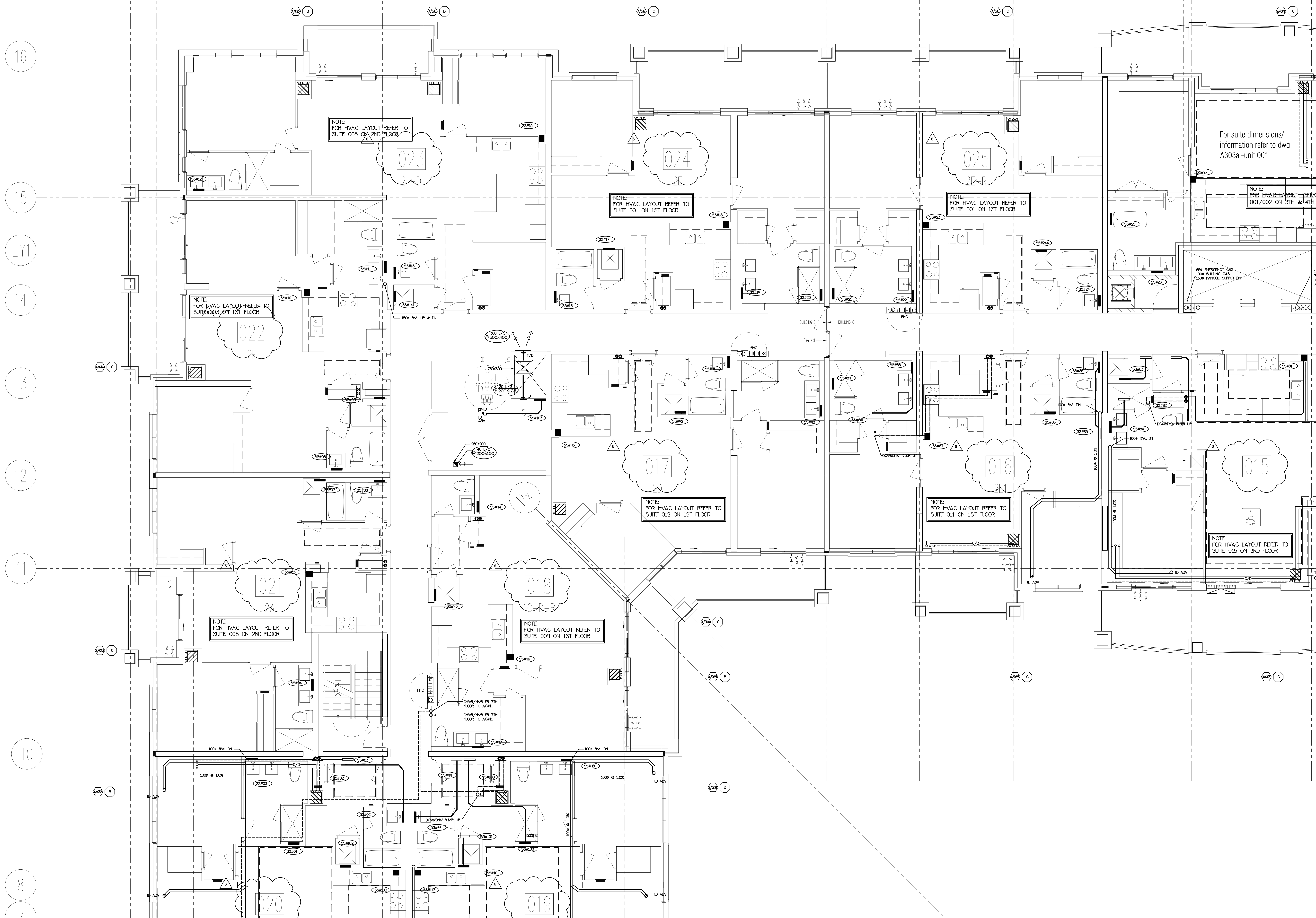


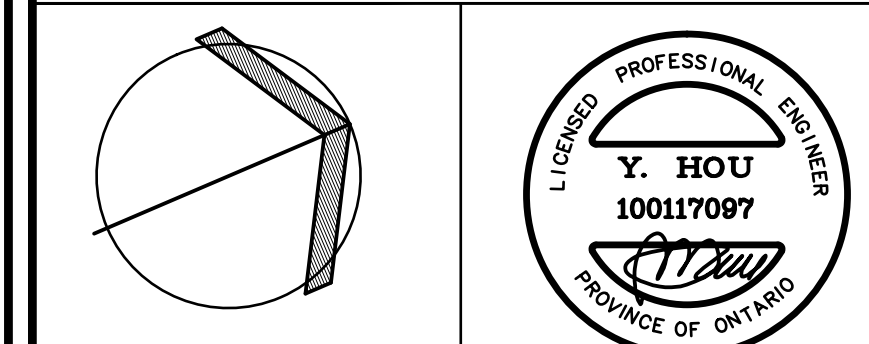
NOTE: FULLY SPRINKLERED BUILDING  
FOR FIRE PROTECTION DESIGN PLEASE  
REFER TO DISANO SPRINKLER DESIGN  
UNITED DRAWINGS.



NO.	BY	DESCRIPTION	DATE
6	LB	REVISED AS PER SITE INSTRUCTION P1-6	AUG/28/2017
5	LB	REVISED AS PER SITE INSTRUCTION P1-5	AUG/01/2017
4	LB	PROGRESS FOR CONSTRUCTION	JUL/18/2017
3	LB	ISSUED AS PER SITE INSTRUCTION P1-4	MAY/18/2017
2	LB	ISSUED FOR PERMIT	DEC/28/2016
1	LB	ISSUED FOR TENDER	MAR/21/2016

NO.	BY	DESCRIPTION	DATE
1	LB	ISSUED FOR TENDER	MAR/21/2016
2	LB	ISSUED FOR PERMIT	DEC/28/2016
3	LB	ISSUED AS PER SITE INSTRUCTION P1-4	MAY/18/2017
4	LB	PROGRESS FOR CONSTRUCTION	JUL/18/2017
5	LB	REVISED AS PER SITE INSTRUCTION P1-5	AUG/01/2017
6	LB	REVISED AS PER SITE INSTRUCTION P1-6	AUG/28/2017

This drawing, is an instrument of service, is provided by and is the property of United Engineering Inc. The contractor must verify and accept responsibility for all dimensions and conditions on site and must notify United Engineering Inc. of any discrepancy before proceeding. United Engineering Inc. is not responsible for the accuracy of Architectural, structural, interior design, etc. on this drawing. Refer to the appropriate trade drawings before proceeding with any work. Installation must conform to all applicable codes and requirements of the authorities having jurisdiction. This drawing is not to be scaled, all symbols are graphic representations only.



**United Engineering Inc.**  
Mechanical Electrical Consulting Engineers  
3045 Keele Street, Suite 105,  
Toronto, Ontario, M3J 1M6  
Tel: (416) 308 1999, Fax: (416) 308 1933

TITLE <b>PART 5TH FLOORS PLAN MECHANICAL</b>			
PROJECT <b>25 BAKER HILL BLVD. ROYAL PINE HOMES</b>			
STOUFFVILLE, ONTARIO		PROPOSED RESIDENTIAL DEVELOPMENT	
DRAWN GC	CHECKED BT	SCALE 1:50	DRAWING <b>M-22</b>
DATE JUNE 2015	PROJECT <b>14-016</b>	OF <b>42</b>	