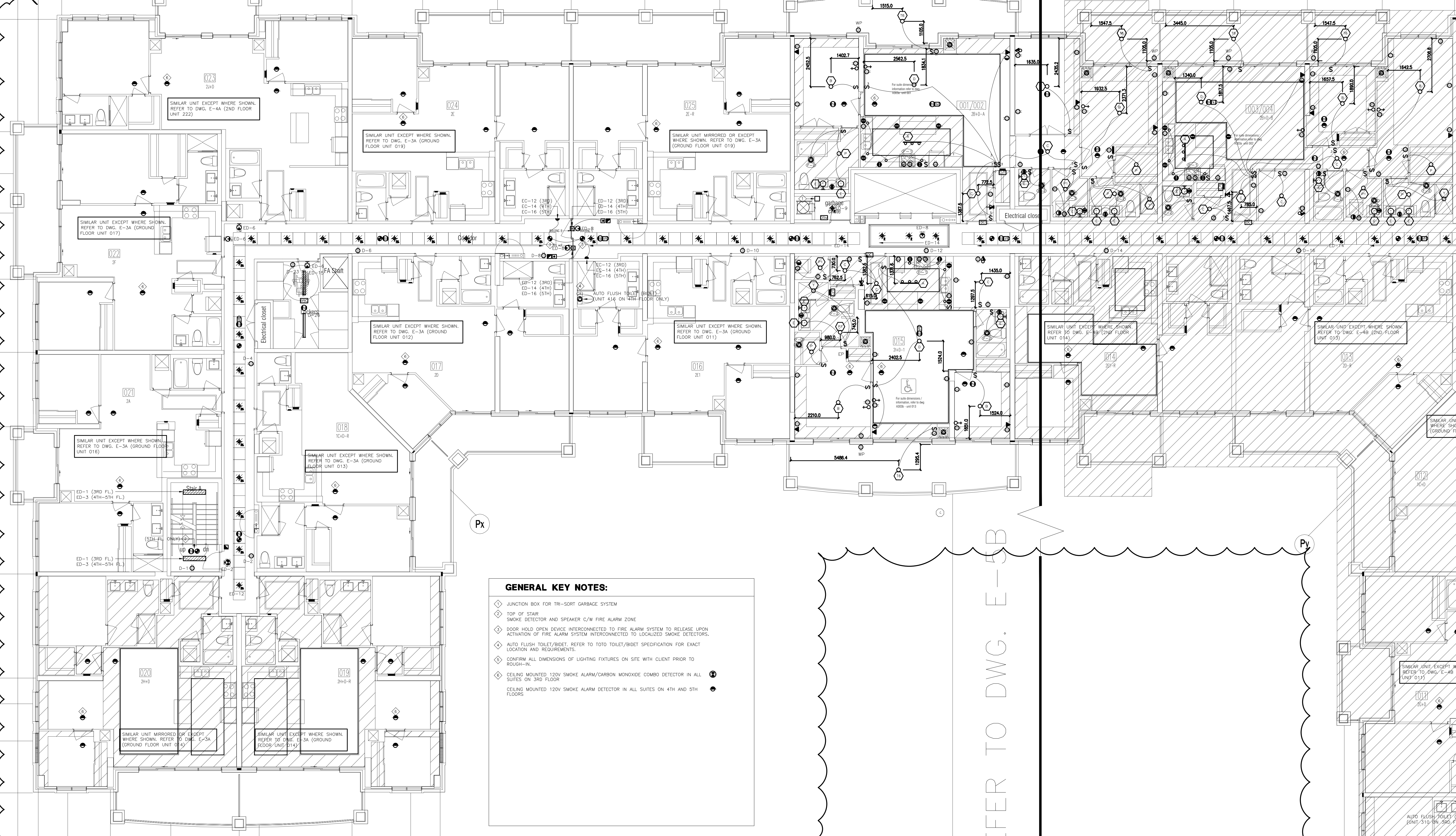


16  
15  
EY1  
14  
13  
12  
11  
10  
8  
7  
5  
4  
3  
1



**GENERAL KEY NOTES:**

- ◆ JUNCTION BOX FOR TRI-SORT GARBAGE SYSTEM
- ◆ TOP OF STAIR
- ◆ SMOKE DETECTOR AND SPEAKER C/W FIRE ALARM ZONE
- ◆ DOOR HOLD OPEN DEVICE INTERCONNECTED TO FIRE ALARM SYSTEM TO RELEASE UPON ACTIVATION OF FIRE ALARM SYSTEM INTERCONNECTED TO LOCALIZED SMOKE DETECTORS.
- ◆ AUTO FLUSH TOILET/BINET, REFER TO TOTO TOILET/BINET SPECIFICATION FOR EXACT LOCATION AND REQUIREMENTS.
- ◆ CONFIRM ALL DIMENSIONS OF LIGHTING FIXTURES ON SITE WITH CLIENT PRIOR TO ROUGH-IN.
- ◆ CEILING MOUNTED 120V SMOKE ALARM/CARBON MONOXIDE COMBO DETECTOR IN ALL SUITES ON 3RD FLOOR.
- ◆ CEILING MOUNTED 120V SMOKE ALARM DETECTOR IN ALL SUITES ON 4TH AND 5TH FLOORS.

A Aa Ba C E F G H J K Kb

FOR CONTINUATION REFER TO DWG. E-5B

Ta Tb Td U

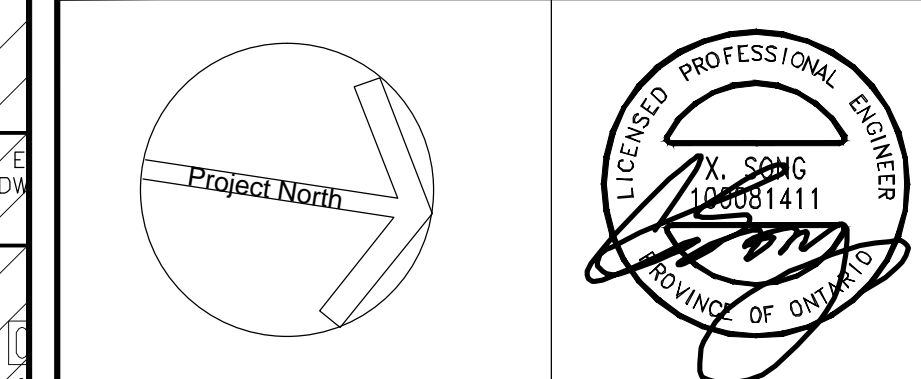
NO.	BY	DESCRIPTION	DATE
12	CM	REVISED AS PER SI E-14	2017-11-17
11	CM	REVISED AS PER SI E-12	2017-10-11
10	CM	REVISED AS PER SI E-6	2017-08-28
09	CM	REVISED AS PER SI E-4	2017-08-17
08	CM	REVISED AS PER SI E-3	2017-08-11
07	CM	ISSUED FOR CONSTRUCTION	2017-08-09
06	CM	PROGRESS FOR CONSTRUCTION	2017-07-18
05	CM	ISSUED FOR PERMIT	2016-12-28
04	CM	REVISED AS PER ADDENDUM E-1	2016-12-12
03	CM	REVISED AS PER SI E-2	2016-10-04
02	CM	REVISED AS PER ESA COMMENTS AND FOR CLARIFICATION	2016-05-19
01	CM	ISSUED FOR TENDER	2016-03-15

This drawing, is an instrument of service, is provided by and is the property of United Engineering Inc. The contractor must verify and accept responsibility for all dimensions and conditions on site and must notify United Engineering Inc. of any discrepancy before proceeding.

United Engineering Inc. is not responsible for the accuracy of Architectural, structural, interior design, etc. on this drawing.

Refer to the appropriate trade drawings before proceeding with any work. Installation must conform to all applicable codes and requirements of the authorities having jurisdiction.

This drawing is not to be scaled, all symbols are graphic representations only.



**United Engineering Inc.**  
Mechanical Electrical Consulting Engineers  
3345 Reele Street, Suite 105,  
Toronto, Ontario, M3J 1M6  
Tel: (416) 398 1999, Fax: (416) 398 1933

**TITLE**  
3RD-5TH FLOOR PLANS - A  
ELECTRICAL

**PROJECT**  
PROPOSED RESIDENTIAL DEVELOPMENT  
25 BAKER HILL BLVD.

**ROYAL PINE HOMES  
STOUFFVILLE, ONTARIO**

DRAWN	CM	CHECKED	MG	SCALE	1:75
DATE	SEPT. 2015	PROJECT	14-016	DRAWING	E-5A
				OF	12