

GENERAL KEY NOTES:

- ◆ JUNCTION BOX FOR TRI-SORT GARBAGE SYSTEM
- ◆ TOP OF STAIR
- ◆ SMOKE DETECTOR AND SPEAKER C/W FIRE ALARM ZONE
- ◆ DOOR HOLD OPEN DEVICE INTERCONNECTED TO FIRE ALARM SYSTEM TO RELEASE UPON ACTIVATION OF FIRE ALARM SYSTEM INTERCONNECTED TO LOCALIZED SMOKE DETECTORS

FOR CONTINUATION REFER TO DWG. E-4B

NO.	BY	DESCRIPTION	DATE
03	CM	REVISED AS PER SI E-1	2016-08-22
02	CM	REVISED AS PER ESA COMMENTS AND FOR CLARIFICATION	2016-05-19
01	CM	ISSUED FOR TENDER	2016-03-15

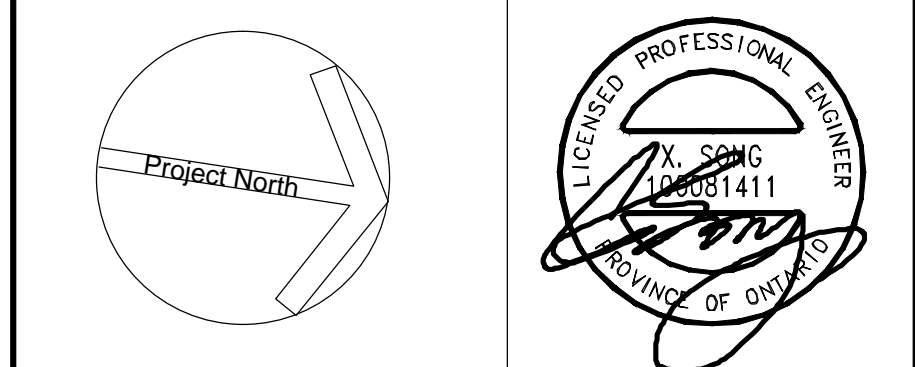
REVISIONS

This drawing, is an instrument of service, is provided by and is the property of United Engineering Inc. The contractor must verify and accept responsibility for all dimensions and conditions on site and must notify United Engineering Inc. of any discrepancy before proceeding.

United Engineering Inc. is not responsible for the accuracy of Architectural, structural, interior design, etc. on this drawing.

Refer to the appropriate trade drawings before proceeding with any work. Installation must conform to all applicable codes and requirements of the authorities having jurisdiction.

This drawing is not to be scaled, all symbols are graphic representations only.



United Engineering Inc.
Mechanical Electrical Consulting Engineers
3345 Reels Street, Suite 105,
Toronto, Ontario, M3J 1M6
Tel: (416) 398 1999, Fax: (416) 398 1933

TITLE	2ND FLOOR PLAN - B ELECTRICAL	
PROJECT	PROPOSED RESIDENTIAL DEVELOPMENT 25 BAKER HILL BLVD.	
	ROYAL PINE HOMES STOUFFVILLE, ONTARIO	
DRAWN	CM	CHECKED MG
DATE	SEPT. 2015	14-016
		SCALE 1:75
		DRAWING E-4B
		OF 12