

7

SCHEDULE "C"

Woodland Park  
(MANORS)  
Town Homes

LOT #: 5026 (WPI)

MODEL: TWILIGHT

PURCHASER: TERRY NEEDLE

PAINT & CLEAN: N/A

OCCUPANCY DATE: N/A

CLOSE DATE: AUGUST 6, 2008

FEATURES INCLUDED AT NO EXTRA COST:

YES 2X6 EXTERIOR CONSTRUCTION

YES FORCED AIR GAS FURNACE

YES 800 SERIES DOORS WITH BRASS HARDWARE

YES 40 OZ. CARPET WITH 1/2" CHIPFOAM UNDERPAD

YES FULL CLAY BRICK

YES OAK SPINDLES AND HAND RAILS (EXCLUDING BASEMENT)(NATURAL COLOUR)

N/A ROUGH-IN 2-PIECE BASEMENT WASHROOM (Except Aries model)

YES 2 TELEPHONE JACKS & 4 CABLE TV JACKS

EXTRAS INCLUDED IN PURCHASE PRICE:

1. FINISHED BASEMENT WITH FINISHED THREE PIECE BATHROOM
2. CASH INCENTIVE
3. CERAMICS PACKAGE LEVEL 1 (C1)

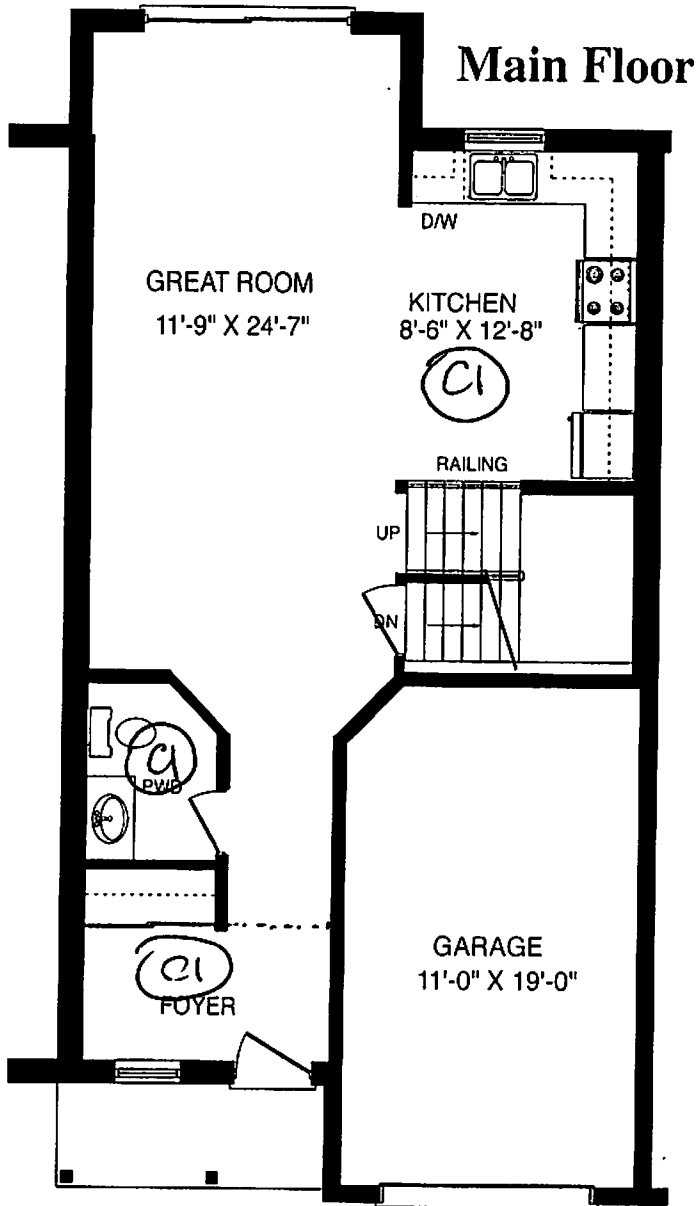


Front Elevation

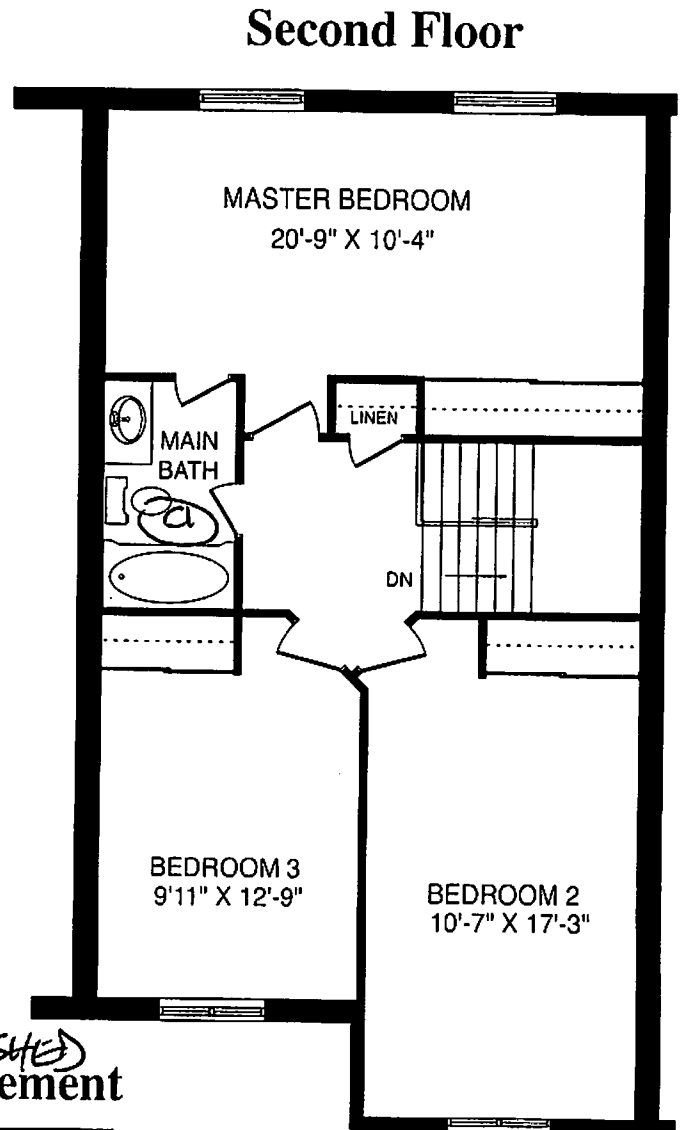


# The Twilight

SUBJECT LOT #5026  
WOODLAND PARK  
TERRY NEEDLE  
CLOSING DATE AUGUST 6, 2008  
**1551 Sq. Ft.**  
1775 SWAN ST.

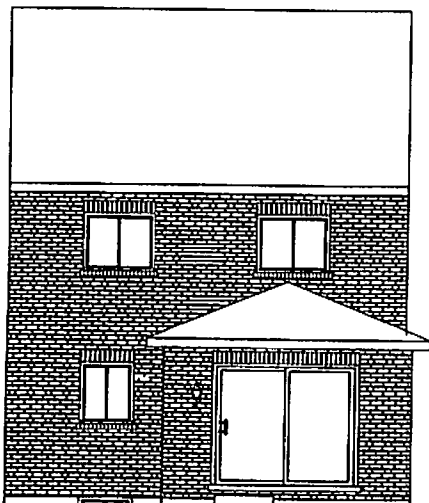
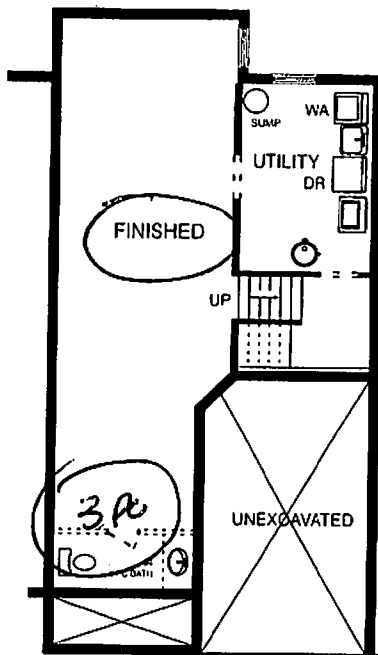


Main Floor

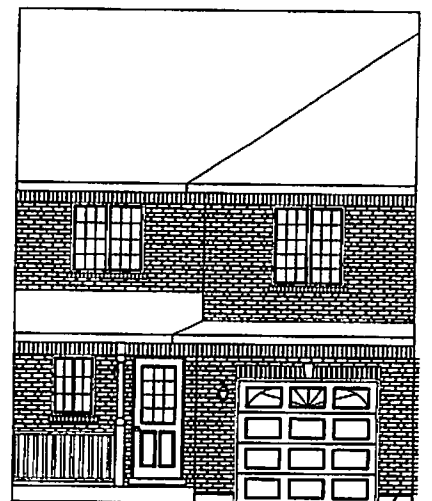


Second Floor

FINISHED  
Basement



Back Elevation



Front Elevation "B"

All material, specifications and floor plans are subject to change without notice. House renderings are artists' conception and may be built as a mirror image. All floor plans are approximate dimensions. Actual usable floor space may vary from the stated floor area. Colour representations are approximate and subject to change.