

CHE-12

SCHEDULE "D"

LOT #: 12	MODEL: Starling 3 bedroom with loft
PURCHASER: Cuff	LOT SIZE: 40
OCCUPANCY DATE:	GARAGE SIZE: Double
CLOSE DATE: April 22nd, 2010	ELEVATION: Already built
PAINT & CLEAN: No	FRONT DOOR: B 02

FEATURES INCLUDED AT NO EXTRA COST:

- Yes 2X6 EXTERIOR CONSTRUCTION
- Yes HIGH EFFICIENCY POWER VENTED GAS FURNACE
- Yes ROUGH-IN CENTRAL VACUUM (pipes run to basement)
- Yes 800 SERIES DOORS WITH BRASS HARDWARE (Sliding closet doors).
- Yes MIRRORED CLOSET DOORS IN ENTRY CLOSET
- Yes 40 OZ. CARPET WITH 1/2" CHIPFOAM UNDERPAD
- Yes FULL CLAY BRICK (OPTION)
(aluminum fascia above all windows if space less than 10 inches)(with architecturally controlled decorative vinyl or aluminum accents where required as per plans)
- Yes PAINTED CLADWOOD SECTIONAL GARAGE DOORS
- Yes OAK SPINDLES AND HAND RAILS (EXCLUDING BASEMENT)(NATURAL COLOUR)
- Yes WOOD DECK (WHERE SPECIFIED)
- Yes FINISHED GAS FIREPLACE (WHERE SPECIFIED)
- Yes ROUGH-IN 2-PIECE OR 3-PIECE BASEMENT WASHROOM
- No SKYLIGHT (WHERE SPECIFIED)
- Yes DECORATIVE GRILLS IN WINDOWS
- Yes 2 TELEPHONE JACKS & 4 CABLE TV JACKS
- Yes INSTALL CERAMIC TOWEL BARS AND TOILET PAPER DISPENSERS
- Yes 8 FOOT CEILINGS ON MAIN AND UPPER FLOOR. HEIGHT MAY VARY DUE TO BULKHEADS

EXTRAS INCLUDED IN PURCHASE PRICE:

- 5 appliance pkg
- Between kitchen and living area place pillars on 1/2 wall (see diagram)
- Central Air 14 Seer
- ceramic flooring: Foyer, Laundry,kitchen and all Baths
- Change entrance to basement to enter laundry room (see diagram)
- decora switches
- door at side of garage

Handwritten initials and a circular stamp.

Energy Star Package

ensuite bath (change tub into 48" shower with glass doors similar to Eagle model

Finish basement : 2 bedrooms with closets, finish bath and rough-in wet bar

Gas Fireplace

Gas line for BBQ

Hardwood flooring: great Room, Lower hall, upper hall,loft and 3 bedrooms

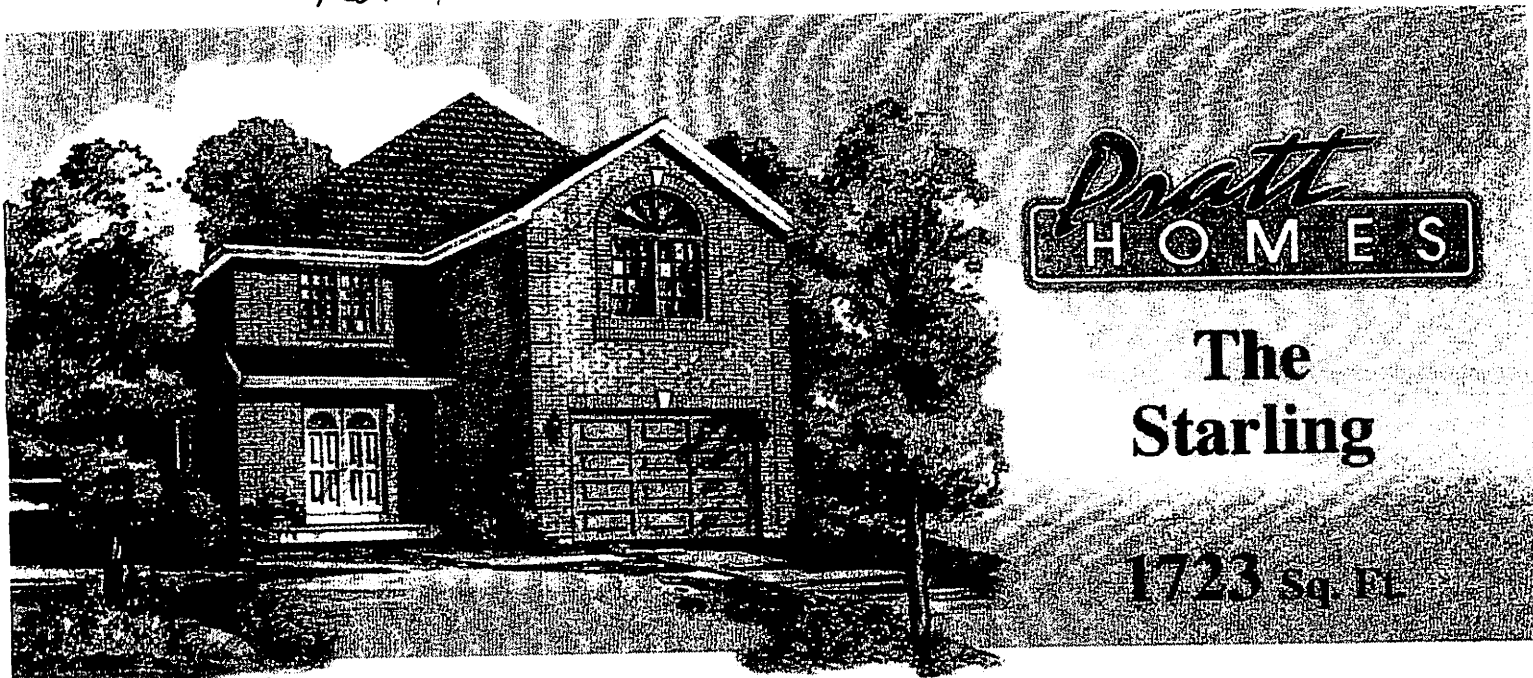
Move hall closet to foyer beside stairs (see diagram)

Remove closet in loft

Stairs off Deck as per attached drawing

A handwritten signature, possibly 'H', is written over a circular stamp or seal.

LOT 12 CHELTENHAM ESTATES



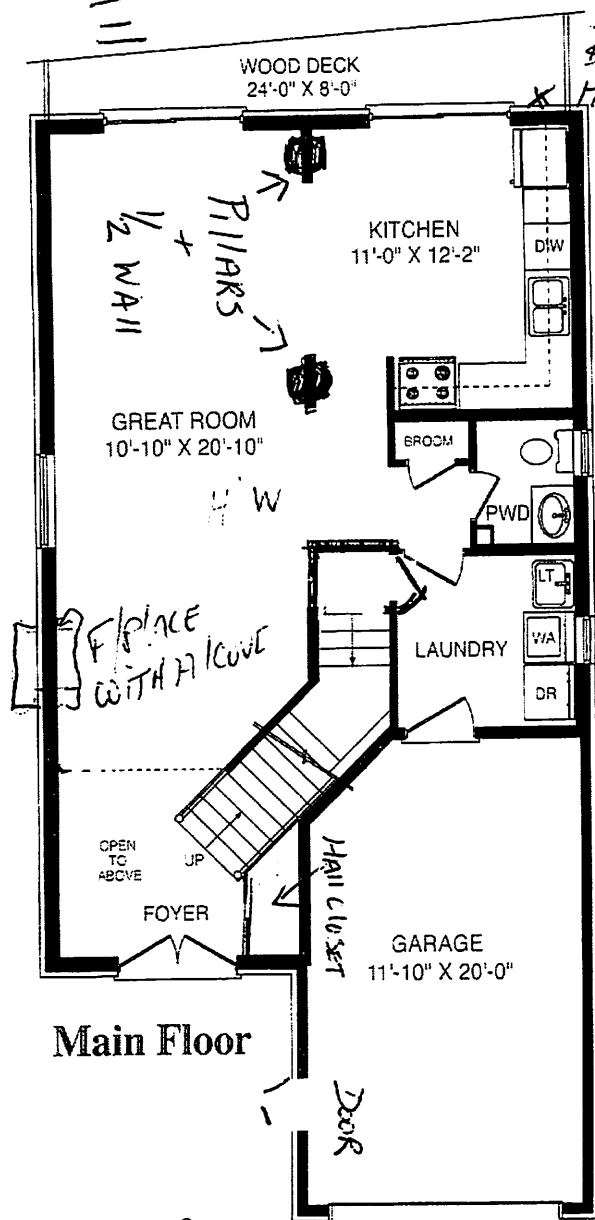
**Pratt
HOMES**

**The
Starling**

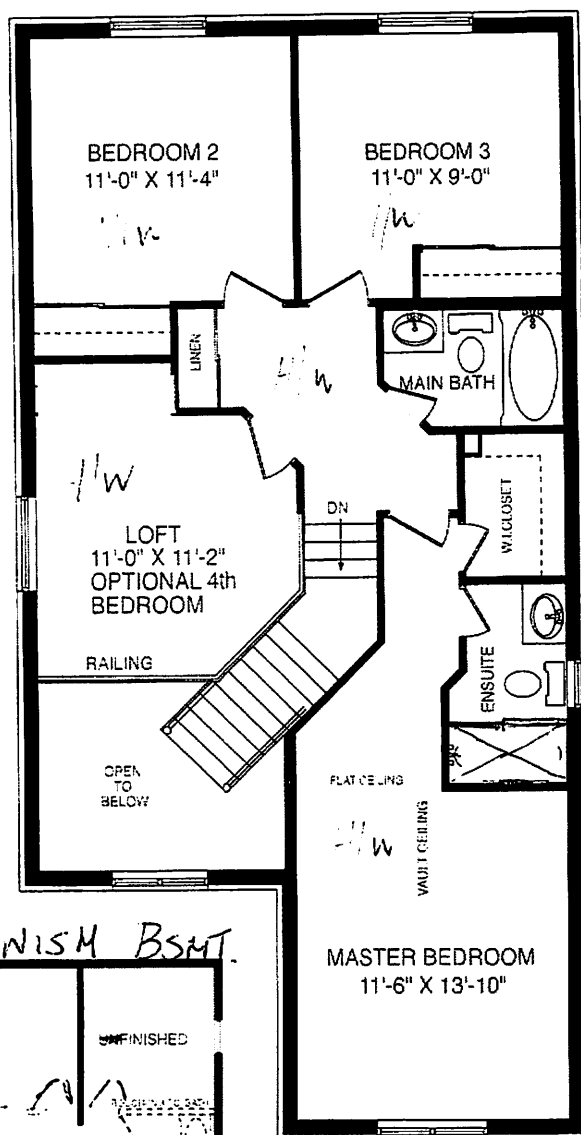
1723 Sq. Ft.

STEPS
FROM
DECK

Elevation "A"



Main Floor

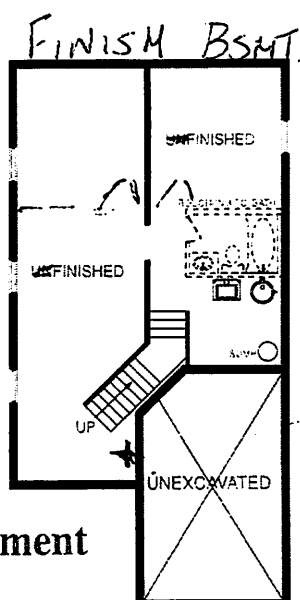


Second Floor



Elevation "B"

Basement



Hot/Cold
ROUGH-IN
WET BAR

All material, specifications and floor plans are subject to change without notice. House renderings are artists' conception and may be built as a mirror image. All floor plans are approximate dimensions. Actual usable floor space may vary from the stated floor area. Colour representations are approximate and subject to change. Municipal Architectural Controls may require modification to exterior material used, exterior house design, appearance and colours. Subject to change E. & O.E.

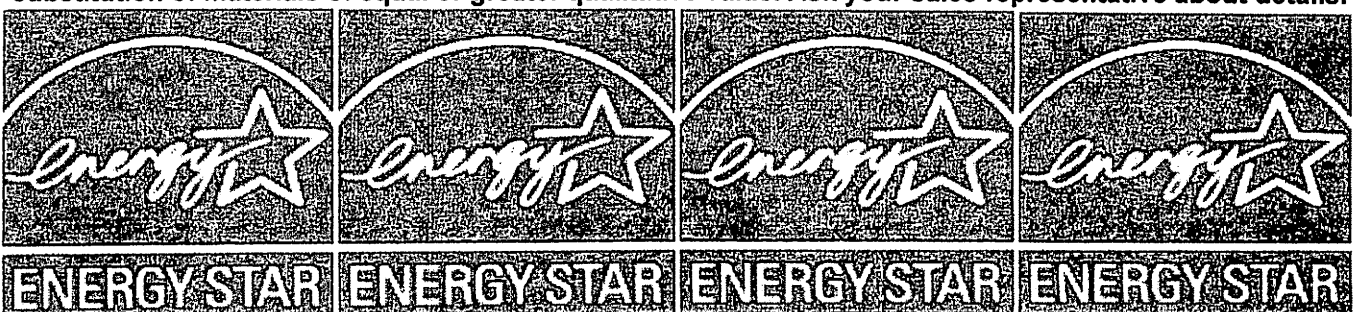


ENERGY STAR HOME PACKAGE

- York Two Stage Variable Speed Furnace w/ECM motor and Programmable Thermostat
- High Efficiency 2/3 Power Vented Hot Water Heater
(Rental – Standard Pratt Feature)
- Upgraded Insulation
 - R50 Attic Insulation
 - Exterior walls – R22 Batt
 - Full Height R12 Basement Insulation
- Heat Recovery Ventilator (HRV) and Main Duct Sealing
- Pollard Low E / Argon Energy Star Rated Windows
- Airtight Electrical Boxes (on exterior walls)
- Energy Star approved lighting (minimum 50% of fixtures)
- Air Tight Construction with sufficient Ventilation
- Styrofoam™ Weathermate™ housewrap
- Foam Sealed windows
- Energy Star for New Houses Label – Government sponsored 3rd party, independent inspection of quality control with blower door test.

PLEASE NOTE:

Pratt Home Energy Star Homes must meet Energy Star quality standards but this might include substitution of materials of equal or greater qualitative value. Ask your sales representative about details.



EnergyStar Feb 12 2008

HH ©