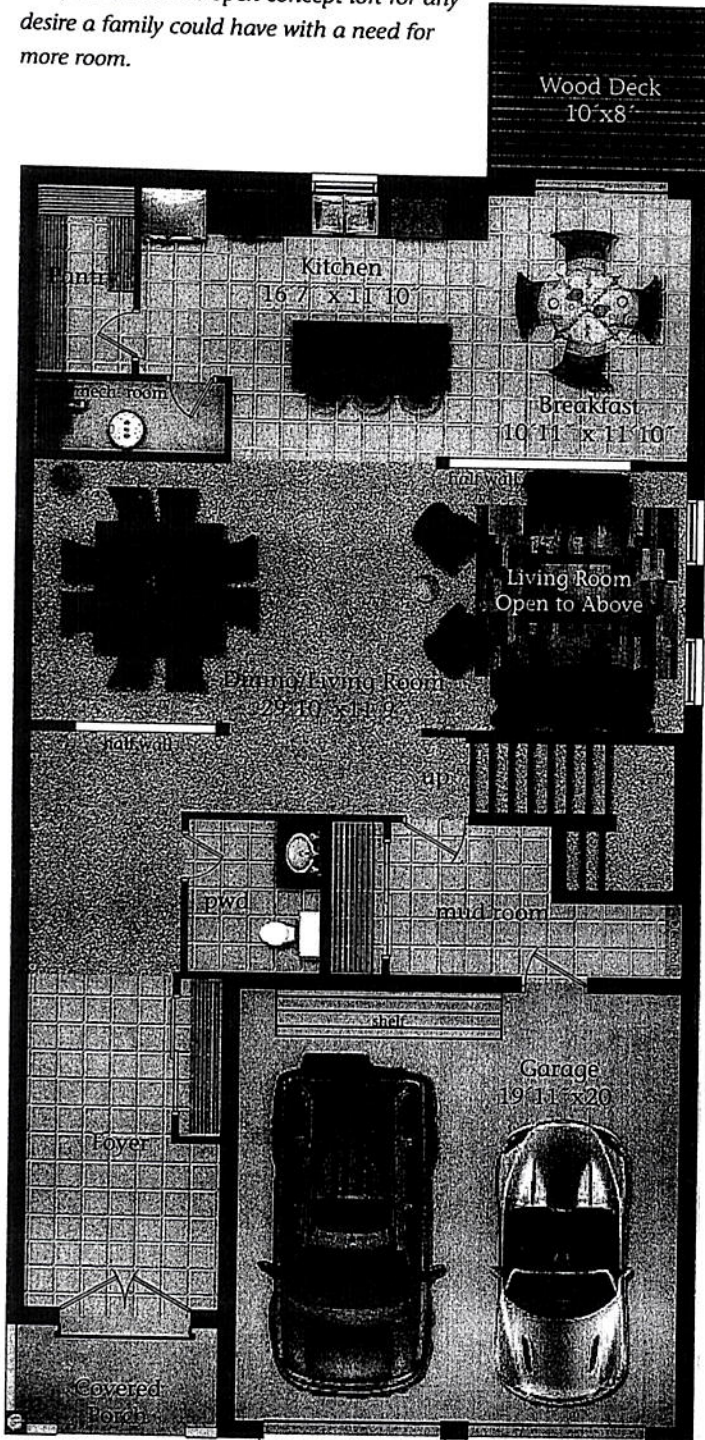


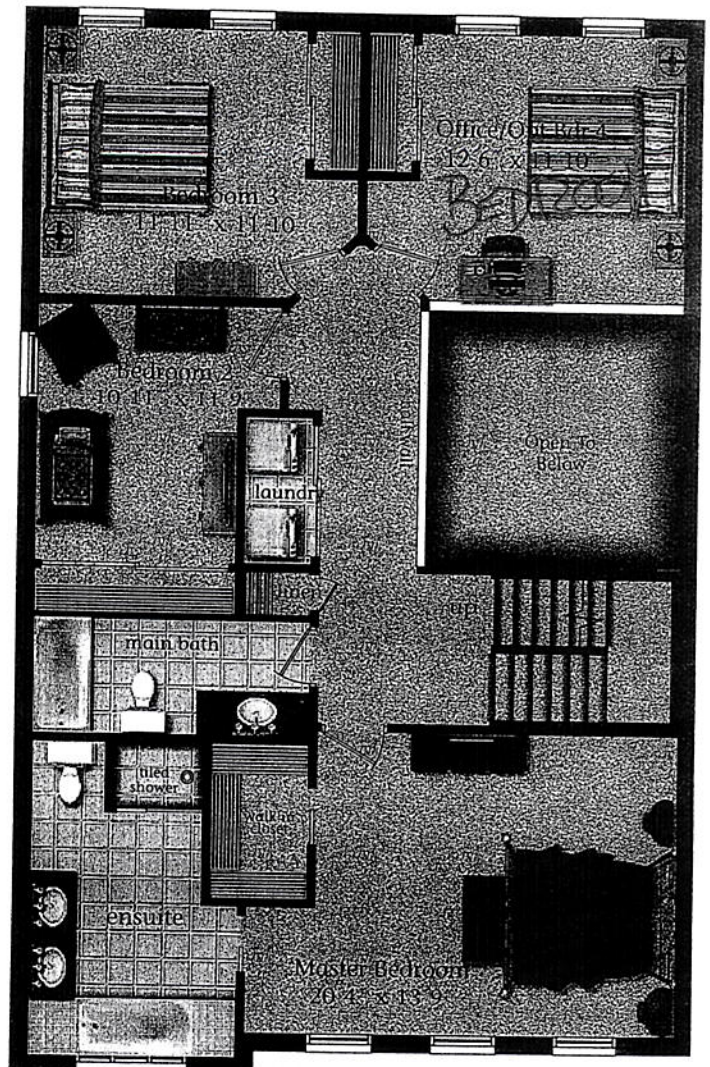
Kelso

2 Storey Detached 3401 Square Feet

This fabulous modern design features two traditional floors and a large full length loft. This 3401 square foot home has all the amenities a family could desire. The kitchen features a large pantry with an island for entertaining. The eating area looks onto the wooden deck leading into the back yard. The second floor hosts a large Master bedroom with large ensuite and walk-in closet, laundry and spacious main bathroom. Bedrooms overlook the main floor living room. Three bedrooms with an option fourth to replace the study room. On the top floor, an enormous open concept loft for any desire a family could have with a need for more room.



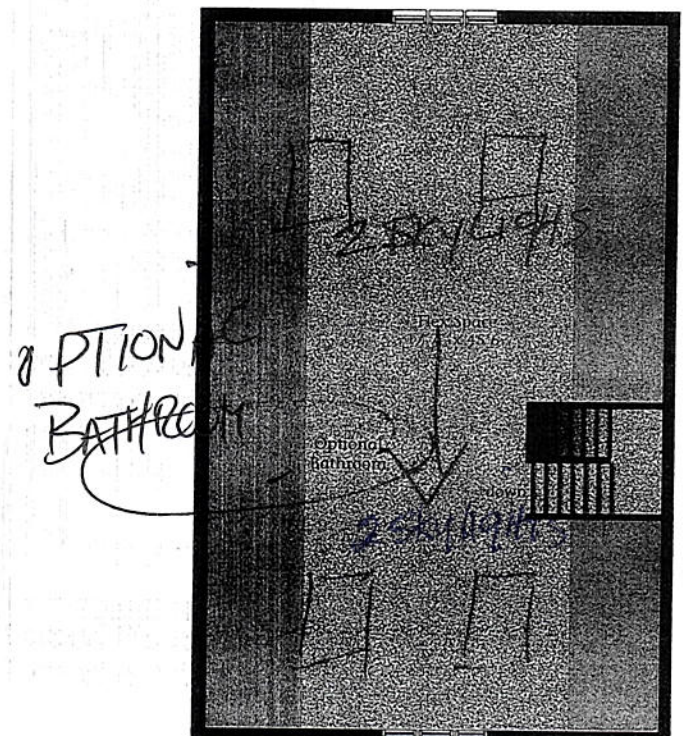
**Main Floor
Elevation "B"**



**Second Floor
Elevation "B"**



**Second Floor
Elevation "A"**



Artist's Concept

All material, specifications and floor plans are subject to change without notice. House renderings are artists' conception and may be built as a mirror image. All floor plans are approximate dimensions. Actual usable floor space may vary from the stated floor area. Colour representations are approximate and subject to change. Municipal Architectural Controls may require modification to exterior material used, exterior house design, appearance and colours. ©Pratt Homes Jan 2012 UltraModel 3401 Kelso

5-5