

SCHEDULE "D"

LOT #: 19

MODEL: Windemere 4
bedrom

PURCHASER: Marugesu

LOT SIZE: 40

OCCUPANCY DATE:

GARAGE SIZE: Double

CLOSE DATE: September 5th, 2013

ELEVATION: A

PAINT & CLEAN: No

FRONT DOOR: b03

EXTRAS INCLUDED IN PURCHASE PRICE:

2 tone paint (one on wall and white doors and trim)

change patio slider of off kitchen to B07

Change walk out slider to E30

~~great room and dining room hard wood~~

OK
B-19

include all optional windows

include granite in kitchen

Lot premium

Oak Staircase as incentive

promotion tv and laptop included

walkont

ABC-19

OK
B-19
B-19

Schedule E

4 Bedroom

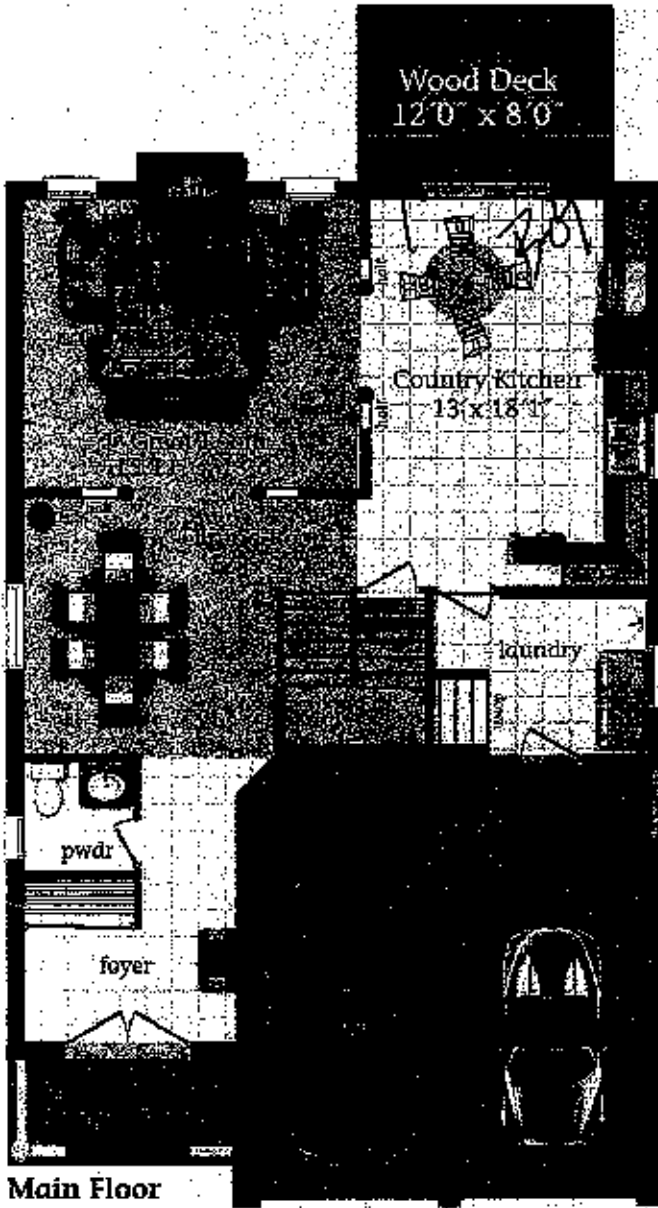
Windemere

2 STOREY DETACHED

2416 Square Feet

As one of our most popular models, the Windemere has many fabulous features including double entry doors, open concept great room with gas fireplace, dining room and a large eat in kitchen. Beautiful and functional floor plan offers 3 or 4 bedrooms. Huge master has vaulted ceilings, walk in closet and a very large ensuite with corner soaker tub.

This home is also available with the luxury of a triple car garage if desired. Great basement layout with 3 piece rough in bath for future use.

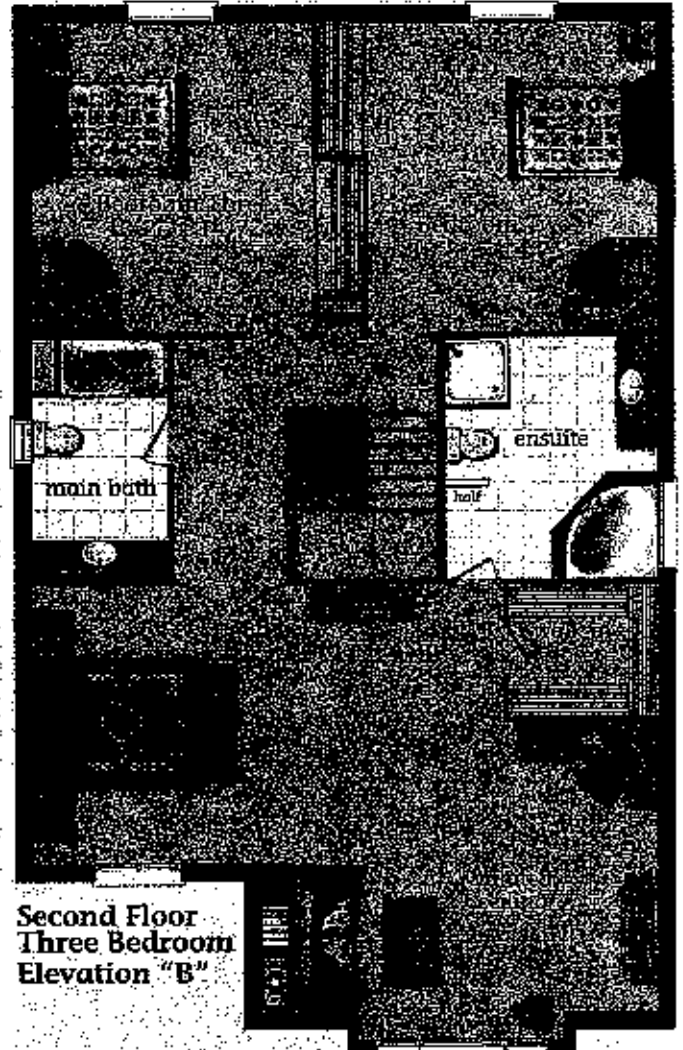


Main Floor Elevation "B"



Main Floor Elevation "A"

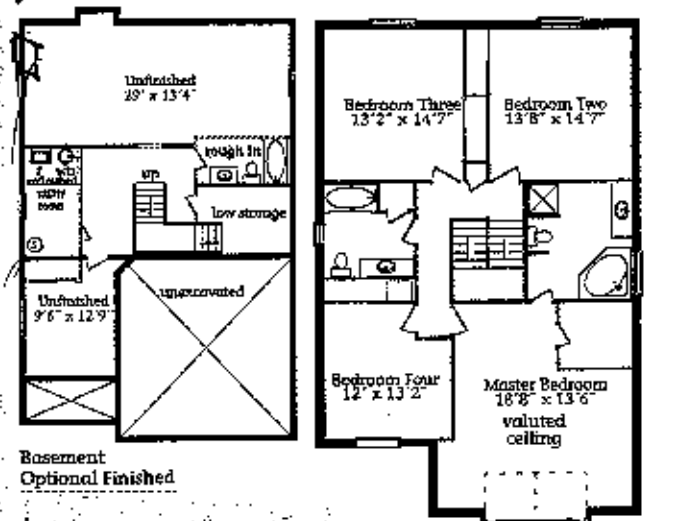
Artist's Concept



Second Floor Three Bedroom Elevation "B"



Second Floor Three Bedroom Elevation "A"



Second Floor Four Bedroom Elevation "A"

Basement Optional Finished

All material, specifications and floor plans are subject to change without notice. House renderings are artist's conception and may be built as a mirror image. All floor plans are approximate dimensions. Actual usable floor space may vary from the stated floor area. Colorat representations are approximate and subject to change. Municipal Architectural Controls may require modification to exterior material used, exterior house design, appearance and colour.

©2012 Homes Jan 2012 UltraModel 2416 - Windemere

ABC-19