



TARPIN LUMBER INCORPORATED

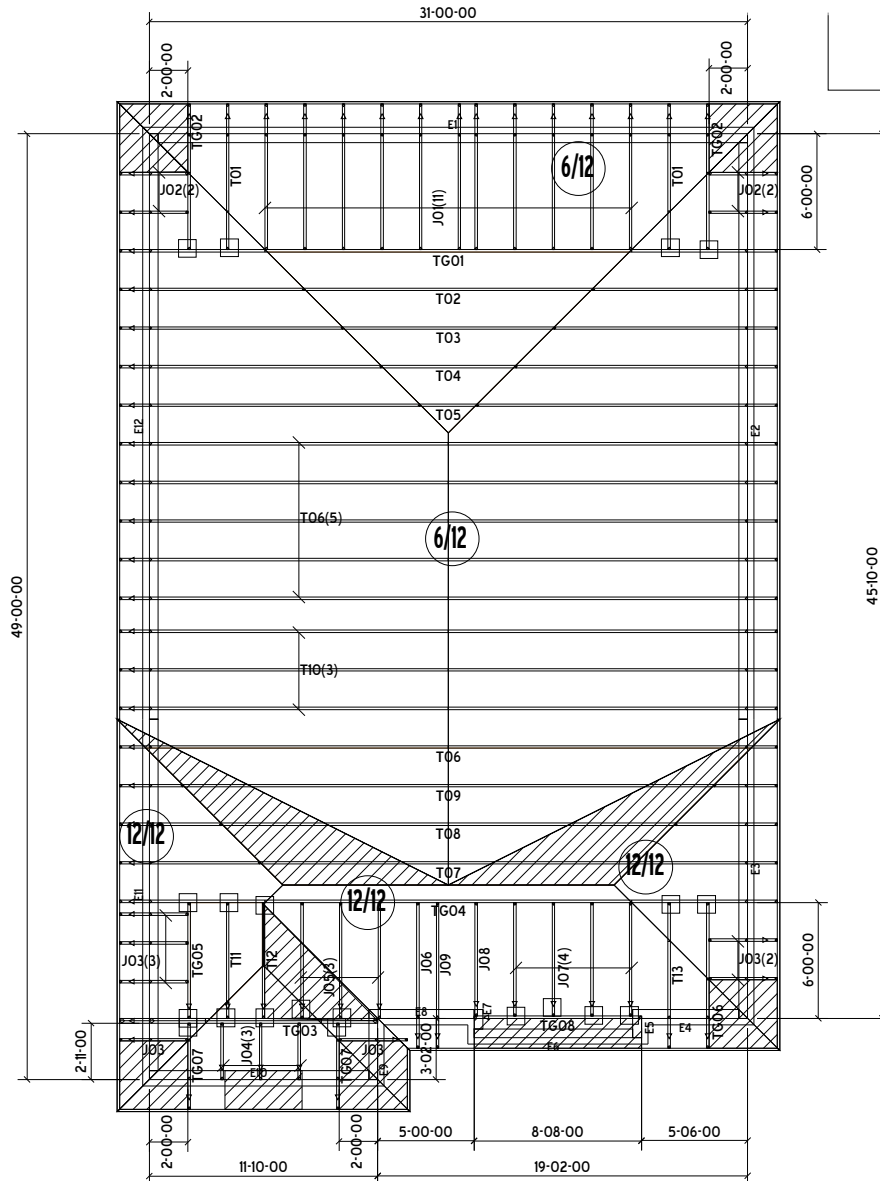
2267 Bowman Street
Innisfil, Ontario L9S 3V5

705-436-5373/416-283-2222
705-436-7457 [Fax]
www.tarpin.com

Building Department Stamp:

ROOF TRUSS LAYOUT

SCALE: N.T.S.



Panel		
Label	Height	Stud Size
E1	9'-01'-02	2x6 SPF Stud
E2	9'-01'-02	2x6 SPF Stud
E3	9'-01'-02	2x6 SPF Stud
E4	9'-01'-02	2x6 SPF Stud
E5	9'-01'-02	2x6 SPF Stud
E6	9'-01'-02	2x6 SPF Stud
E7	9'-01'-02	2x6 SPF Stud
E8	9'-01'-02	2x6 SPF Stud
E9	9'-01'-02	2x6 SPF Stud
E10	9'-01'-02	2x6 SPF Stud
E11	9'-01'-02	2x6 SPF Stud
E12	9'-01'-02	2x6 SPF Stud

□ = JUS24



CONTRACTOR SHALL CHECK ALL DIMENSIONS AGAINST TARPIN ENGINEERING AND REPORT ANY DISCREPANCIES TO TARPIN LUMBER PRIOR TO PRODUCTION. ANY DIMENSIONAL LUMBER DESIGN SUPPORTING TRUSSES IS THE RESPONSIBILITY OF THE BUILDING DESIGNER NOT TARPIN LUMBER AND TRUSS

FOR ANY INQUIRIES PLEASE CONTACT: Shellie King/(416) 818-9212/sking@tarpin.com

ALL CONVENTIONAL FRAMING, EITHER SHOWN ON LAYOUT OR ASSUMED, IS TO CONFORM TO THE REQUIREMENTS OF OBC. CONVENTIONAL FRAMING OVER TRUSSES TO BE 2X4 SPF #2 AT 24" O/C WITH VERTICAL SUPPORTS TO EACH TRUSS INTERSECTION BELOW. VERTICAL SUPPORTS LONGER THAN 6'-0" SHALL BE Laterally Braced TO DIAPHRAGM AT MID HEIGHT.

DO NOT SWITCH OR INVERT ANY TRUSSES. CAREFULLY REVIEW ALL DESIGNS PRIOR TO INSTALLATION. REFER TO SITE PACKAGE FOR INSTALLATION INSTRUCTIONS. ANY TRUSS REQUIRING REPAIR OR MODIFICATION SHOULD NOT BE INSTALLED UNTIL TARPIN TRUSS HAS REVIEWED.

CUSTOMER:	Plaza Corporation	DATE:	11/2/2023	Roof Square Footage:	2086.5
PROJECT:	Sequin St	LOCATION:	Richmond Hill	Ground Snow Load:	37.5 lb/ft ²
MODEL:	2665D	LOT:		DESIGNER:	JPI556
				QUOTE#:	23-03445

Per: joshua.nabua