

RAYWAL CABINETS

JUN BLD7 - UNIT 140 - CIVIC 201

AS BUILT - MAY 13 2025

NUVO - KITCHEN - LOWER UNIT

KITCHEN UPPERS

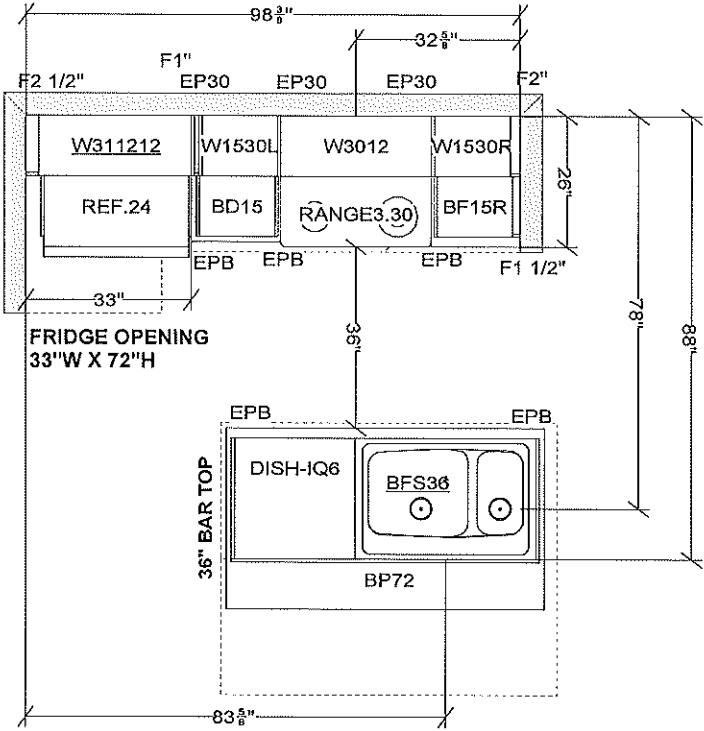
DOOR STYLE: RETRO  
FINISH: COTTON  
SPECIES: THERMOFOIL  
BOX INTERIOR: WHITE MELAMINE  
DRAWER FRONT: FLAT  
DRAWER BOX: METABOX  
HINGE: STANDARD

KITCHEN LOWERS + ISLAND

DOOR STYLE: RETRO  
FINISH: IRON  
SPECIES: THERMOFOIL  
BOX INTERIOR: WHITE MELAMINE  
DRAWER FRONT: FLAT  
DRAWER BOX: METABOX  
HINGE: STANDARD

HARDWARE:116

COUNTERTOP: F6698-46  
WITH 4" BACKSPLASH



DWKIT X 1  
VENT BOX X 1 (12"W x 9"D x 10 3/4")

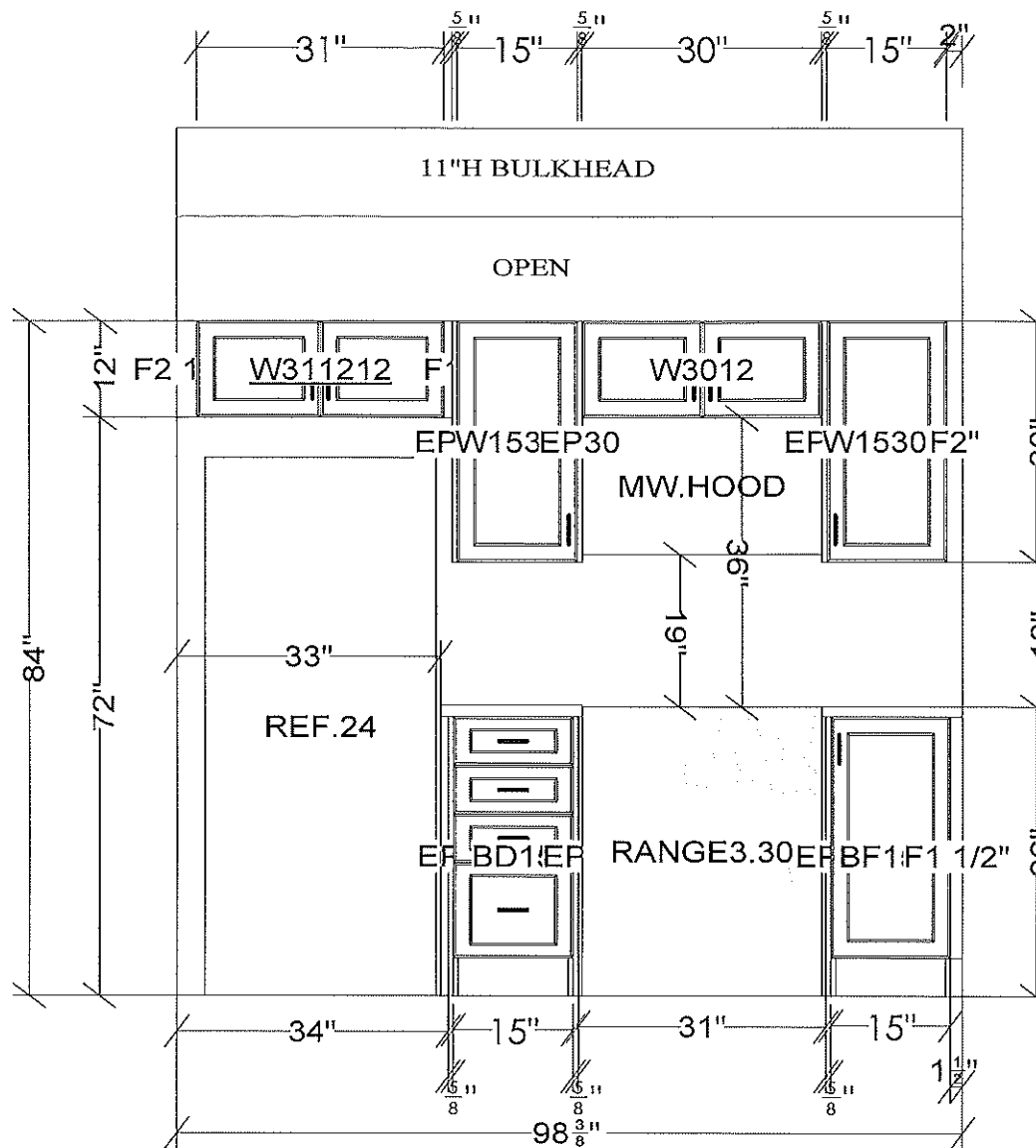
KICKB96 X 2  
SCRIBE96 X 3

All dimensions \_size designations  
given are subject to verification on  
job site and adjustment to fit job  
conditions.

2020

This is an original design and must  
not be released or copied unless  
applicable fee has been paid or job  
order placed.

Designed: 5/15/2025  
Printed: 5/15/2025



NO LIGHT VALANCE / NO CROWN/BUILD-UP

All dimensions and size designations given are subject to verification on job site and adjustment to fit job conditions.

2020

This is an original design and must not be released or copied unless applicable fee has been paid or job order placed.

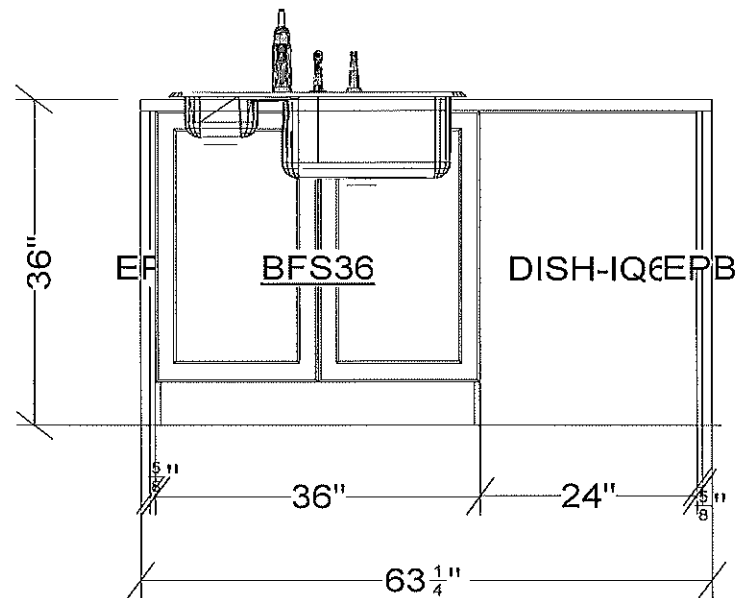
Designed: 5/15/2025  
Printed: 5/15/2025

NUVO- LOWER UNIT (KITCHEN)

EI 1

Drawing #: 1

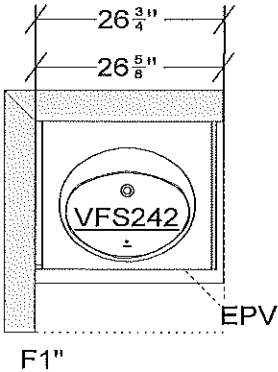
Scale : 0 1/2" 1'



All dimensions, size designations given are subject to verification on job site and adjustment to fit job conditions.	2020	This is an original design and must not be released or copied unless applicable fee has been paid or job order placed.	Designed: 5/15/2025 Printed: 5/15/2025
NUVO- LOWER UNIT (KITCHEN)	El 2	Drawing #: 1	Scale : 0 9/16" 1'

RAYWAL CABINETS  
 JUN BLD 7 - UNIT 140 - CIVIC 201  
 AS BUILT - MAY 13 2025  
 NUVO - POWDER ROOM - LOWER UNIT

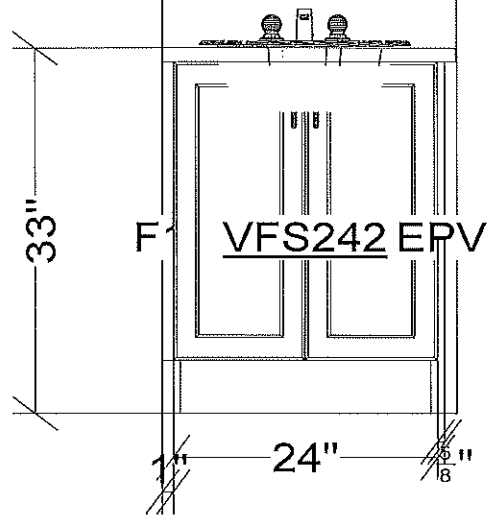
DOOR STYLE: RETRO  
 FINISH: CONCRETE  
 SPECIES: THERMOFOIL  
 BOX INTERIOR: WHITE MELAMINE  
 HINGE: STANDARD  
  
 HARDWARE:142  
  
 COUNTERTOP: W4925K-07  
 WITH 4" BACKSPLASH



KICKB96 X 1  
 SCRIBE96 X 1

All dimensions _size designations given are subject to verification on job site and adjustment to fit job conditions.	2020	This is an original design and must not be released or copied unless applicable fee has been paid or job order placed.	Designed: 5/15/2025 Printed: 5/15/2025	
NUVO - LOWER UNIT (POWDER ROOM)		All	Drawing #: 1	Scale : 0 7/16" 1'

# POWDER ROOM



All dimensions size designations given are subject to verification on job site and adjustment to fit job conditions.

2020

This is an original design and must not be released or copied unless applicable fee has been paid or job order placed.

Designed: 5/15/2025  
Printed: 5/15/2025

NUVO - LOWER UNIT (POWDER ROOM)

EI 1

Drawing #: 1

Scale : 0 11/16" 1'

RAYWAL CABINETS

JUN BLD 7 - UNIT 140- CIVIC 201

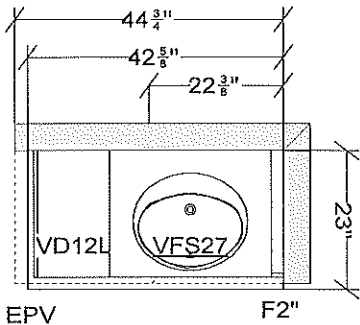
AS BUILT - MAY 13 2025

NUVO - MAIN - LOWER UNIT

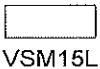
DOOR STYLE: RETRO  
FINISH: CONCRETE  
SPECIES: THERMOFOIL  
BOX INTERIOR: WHITE MELAMINE  
HINGE: STANDARD

HARDWARE:142

COUNTERTOP: W4925K-07  
WITH 4" BACKSPLASH

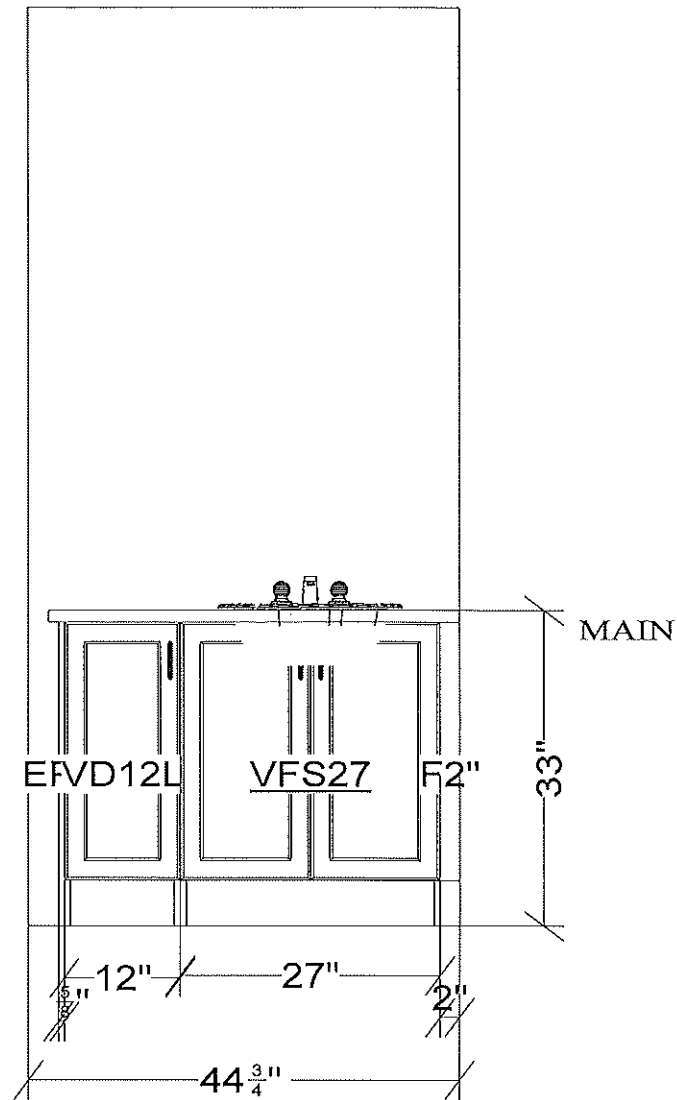


INSTALL 54" OVER TOILET



KICKB96 X 1  
SCRIBE96 X 1

All dimensions and size designations given are subject to verification on job site and adjustment to fit job conditions.	2020	This is an original design and must not be released or copied unless applicable fee has been paid or job order placed.	Designed: 5/15/2025 Printed: 5/15/2025	
NUVO- LOWER UNIT (MAIN)		All	Drawing #: 1	Scale : 0 3/8" 1'



All dimensions size designations given are subject to verification on job site and adjustment to fit job conditions.

2020

This is an original design and must not be released or copied unless applicable fee has been paid or job order placed.

Designed: 5/15/2025  
Printed: 5/15/2025

NUVO- LOWER UNIT (MAIN)

EI 1

Drawing #: 1 No Scale.

# RAYWAL CABINETS

JUN BLD 7 - UNIT 140 - CIVIC 201

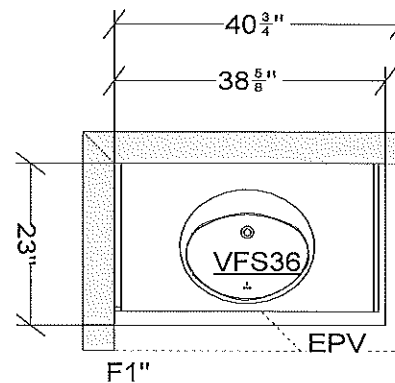
AS BUILT - MAY 13 2025

NUVO - ENSUITE - LOWER UNIT

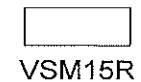
DOOR STYLE: RETRO  
FINISH: CONCRETE  
SPECIES: THERMOFOIL  
BOX INTERIOR: WHITE MELAMINE  
HINGE: STANDARD

HARDWARE: 142

COUNTERTOP: W4925K-07  
WITH 4" BACKSPLASH



INSTALL 54" OVER TOILET

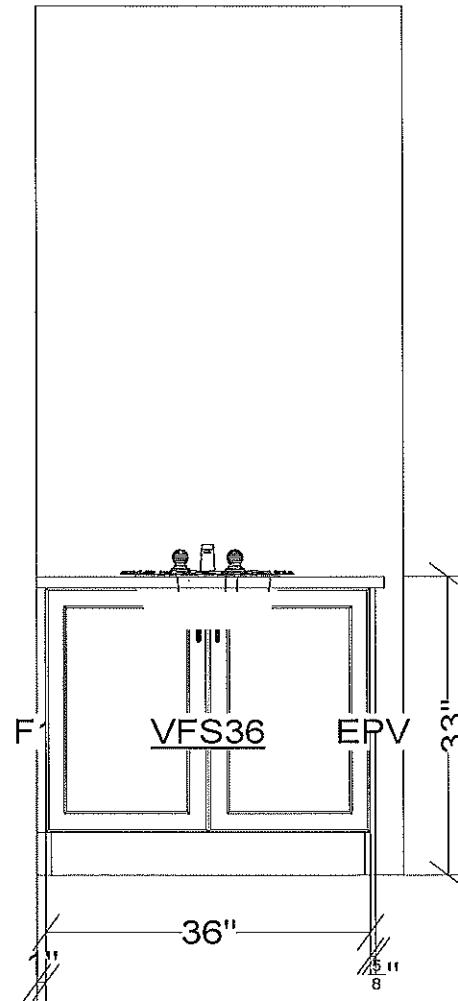


KICKB96 X 1  
SCRIBE96 X 1

All dimensions & size designations given are subject to verification on job site and adjustment to fit job conditions.	2020	This is an original design and must not be released or copied unless applicable fee has been paid or job order placed.	Designed: 5/15/2025 Printed: 5/15/2025
NUVO- LOWER UNIT (ENSUITE)			All Drawing #: 1 Scale : 0 7/16" 1'



ENSUITE



All dimensions size designations given are subject to verification on job site and adjustment to fit job conditions.

2020

This is an original design and must not be released or copied unless applicable fee has been paid or job order placed.

Designed: 5/15/2025  
Printed: 5/15/2025

NUVO- LOWER UNIT (ENSUITE)

EI 1

Drawing #: 1

Scale : 0 9/16" 1'