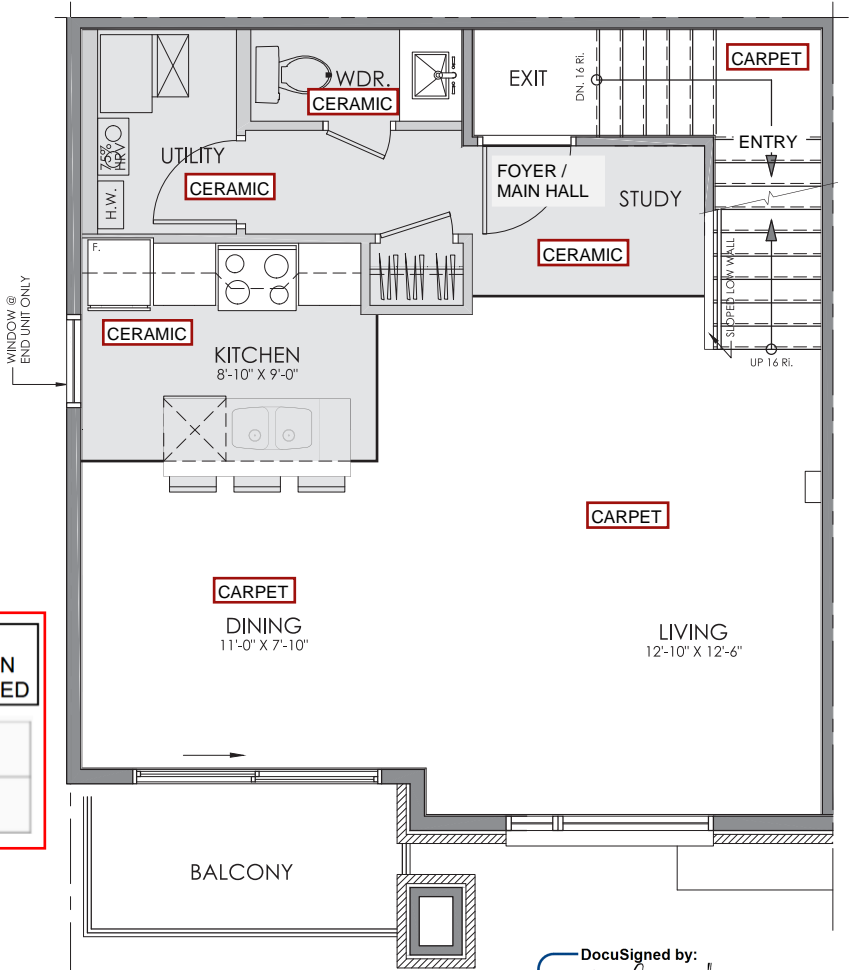


STRATA: UPPER FLOOR  
FLOOR AREA: 621 ft<sup>2</sup>

FLOORING LAYOUT /  
TILE PATTERN

JUNCTION BUILDING #8

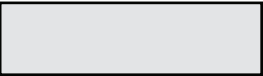
UNIT 245 / CIVIC 629



STRATA: MAIN FLOOR  
FLOOR AREA: 633 ft<sup>2</sup>

DocuSigned by:  
*Walid*  
69E663E5D8304E3...

# Nuvo– upper unit



STANDARD CERAMIC LOCATION

\*Room dimensions may be reduced by service chases and bulkhead not shown. All floor plans are approximate dimensions. Specs and floor plans are subject to change without notice. Actual usable floor space may vary from stated floor area. E. & O.E.  
Note: Tile pattern dimensions are to be determined by Millwork Layout.

