

DCR PHOENIX HOMES

LOT # 352

SITE - PATHWAYS PHASE 2

MODEL - BELFAST (GARAGE LEFT)

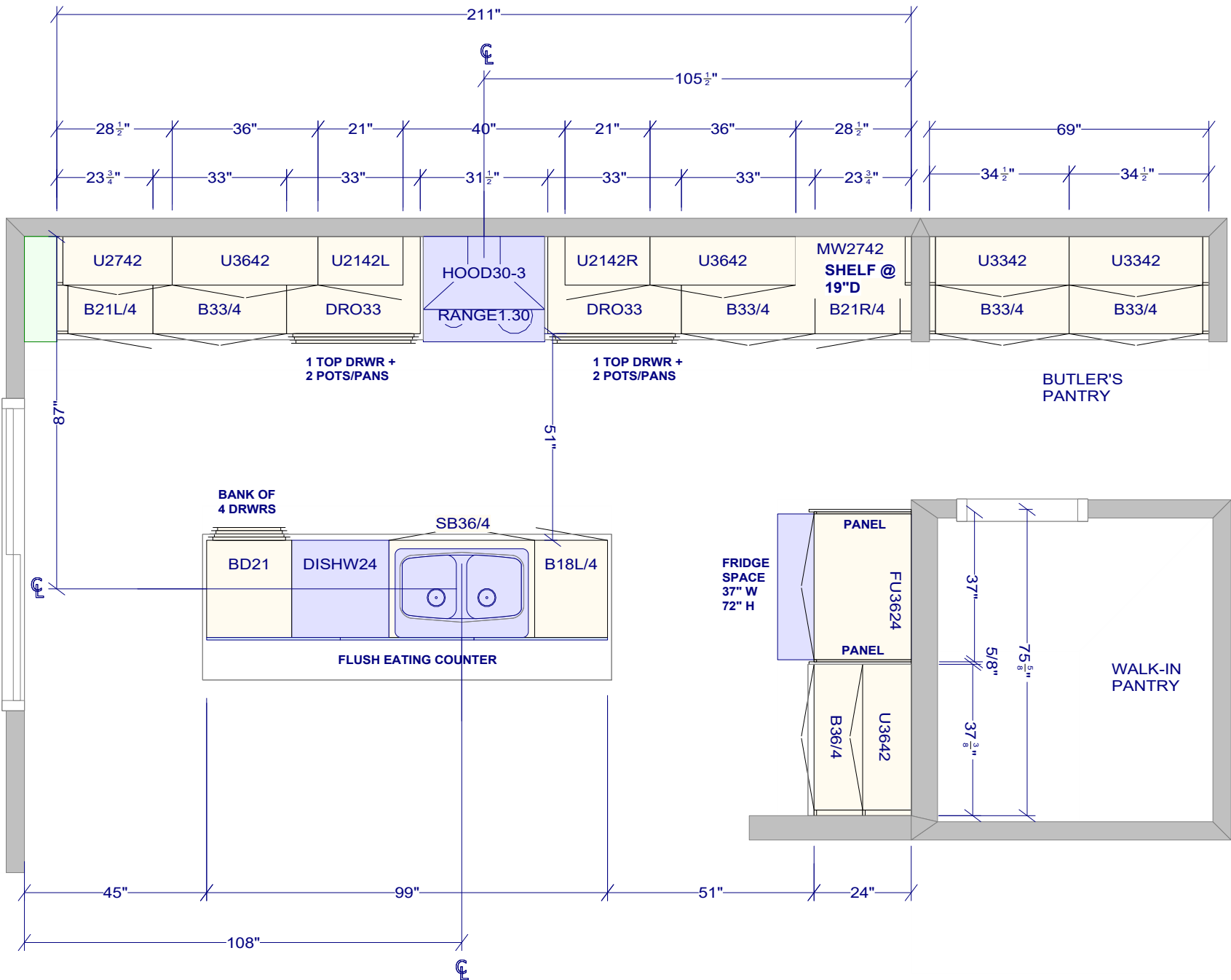
KITCHEN / VANITIES

MOUNTING HEIGHT - 96"

- 42"H UPPERS
- PERIMETER - MISSION - SATIN WHITE THERMOFOIL
- ISLAND - MISSION BLACK THERMOFOIL
- HARDWARE - HU64
- STANDARD WHITE INTERIOR
- STANDARD METAL DRAWER BOX
- 7 PCS - 5/8" KICK - FIN. BOTH ENDS
- 1 PCS - 90 DEG. CORNER MOULD
- 1 PCS - T-MOULD
- 10 PCS - FLAT MOULD

AS BUILT - NOV 19/24

- 1 3/4" FILL TO BULKHEAD
- \*\* BULKHEAD @ 97 3/4"
- FROM FINISHED FLOOR



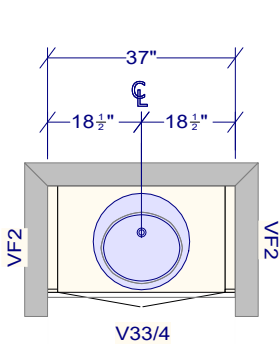
DCR PHOENIX HOMES

LOT # 352  
SITE - PAHTWAYS PHASE 2  
MODEL - BELFAST (GARAGE LEFT)  
5 BEDROOM w/ 2nd ENSUITE

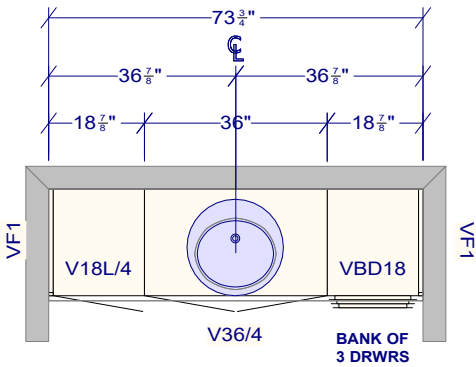
STANDARD WHITE INTERIORS  
STANDARD HINGES  
METAL DRAWER BOXES  
(5 PCS) FLAT MOULDING

AS BUILT - NOV 19/24

MISSION - BLACK THERMOFOIL  
HARDWARE - HU65

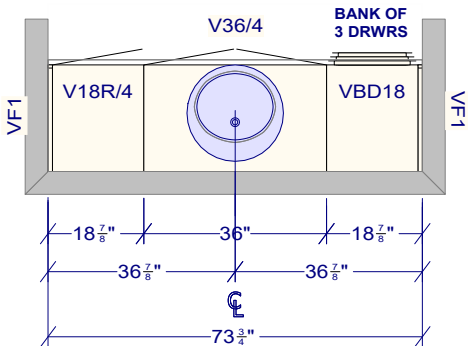


POWDER ROOM

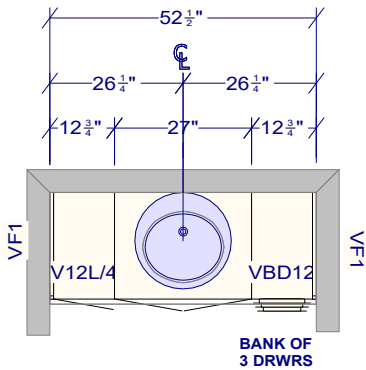


MAIN BATH

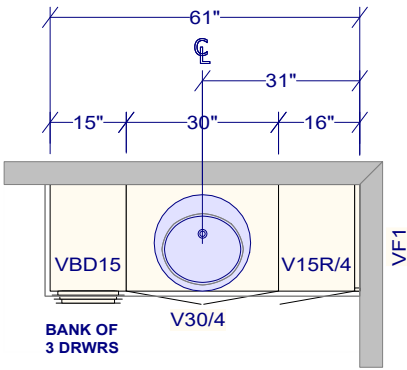
MISSION - SATIN WHITE THERMOFOIL  
HARDWARE - HU65



MISSION - SATIN WHITE THERMOFOIL  
HARDWARE - HU65



ENSUITE #2



PRIMARY ENSUITE

MISSION - SATIN WHITE THERMOFOIL  
HARDWARE - HU65

All dimensions _size designations given are subject to verification on job site and adjustment to fit job conditions.		This is an original design and must not be released or copied unless applicable fee has been paid or job order placed.	Designed: 4/26/2024 Printed: 11/19/2024		
PW2-352 - BELFAST - Alternate Vanities (Left)			All	Drawing #: 1	No Scale.