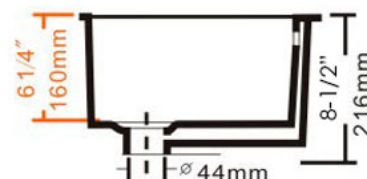
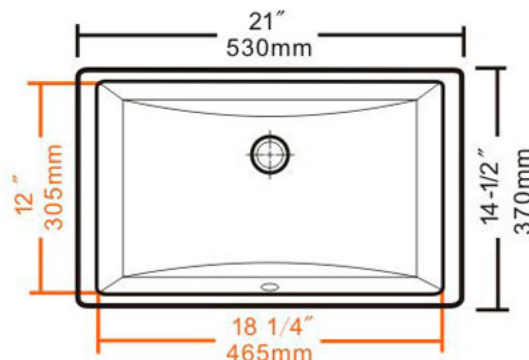


UY G5UVAH I AÁUUY ÖÖÜÄUUT ÄT ÖPÁ  
ÁÖÖPÁ ÖPÖÁÜÜQ ÖYÄÖPÜWQÖÁ

## Product Specification Sheet

### B606 Porcelain Vanity Bowl

Á



**Colour Finish**  
Porcelain

**Model No.**  
B606

#### Description

- White Undermount Porcelain Sink
- Outside Dimensions: 21" x 14-1/2" x 8 1/2"
- Inside Dimensions: 18-1/4" x 12" x 6-1/4"
- Minimum Cabinet Size: 22"
- True Vitreous China
- Cardboard Template included
- Mounting Clips Included
- Limited lifetime warranty
- CSA Certified

#### Available accessories

- Pop Up Drain – No Overflow (Brushed Finish)
- Pop Up Drain – No Overflow (Chrome Finish)
- Pop Up Drain – Overflow (Brushed Finish)
- Pop Up Drain – Overflow (Chrome Finish)



#### MAIN LOCATION

**BRISTOL SINKS**  
56 Firestone Blvd  
London, Ontario  
N5W 6E6

#### WESTERN LOCATION

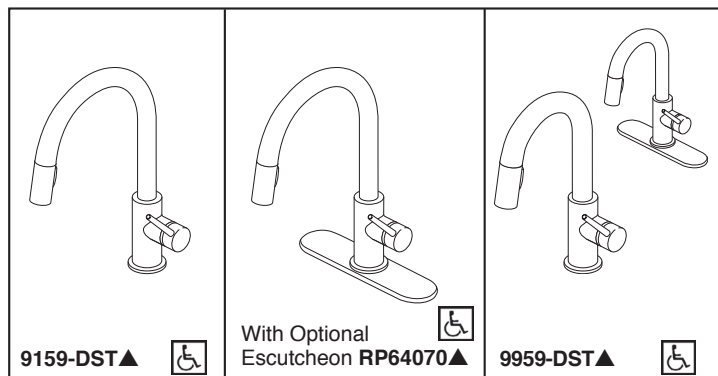
**BRISTOL SINKS**  
964 72nd Avenue NE  
Calgary, Alberta  
T2E 8V9

#### CONTACT

Tel: 1(800) 930-0214  
Fax: 1(866) 310-7580  
Email: sales@bristolsinks.com

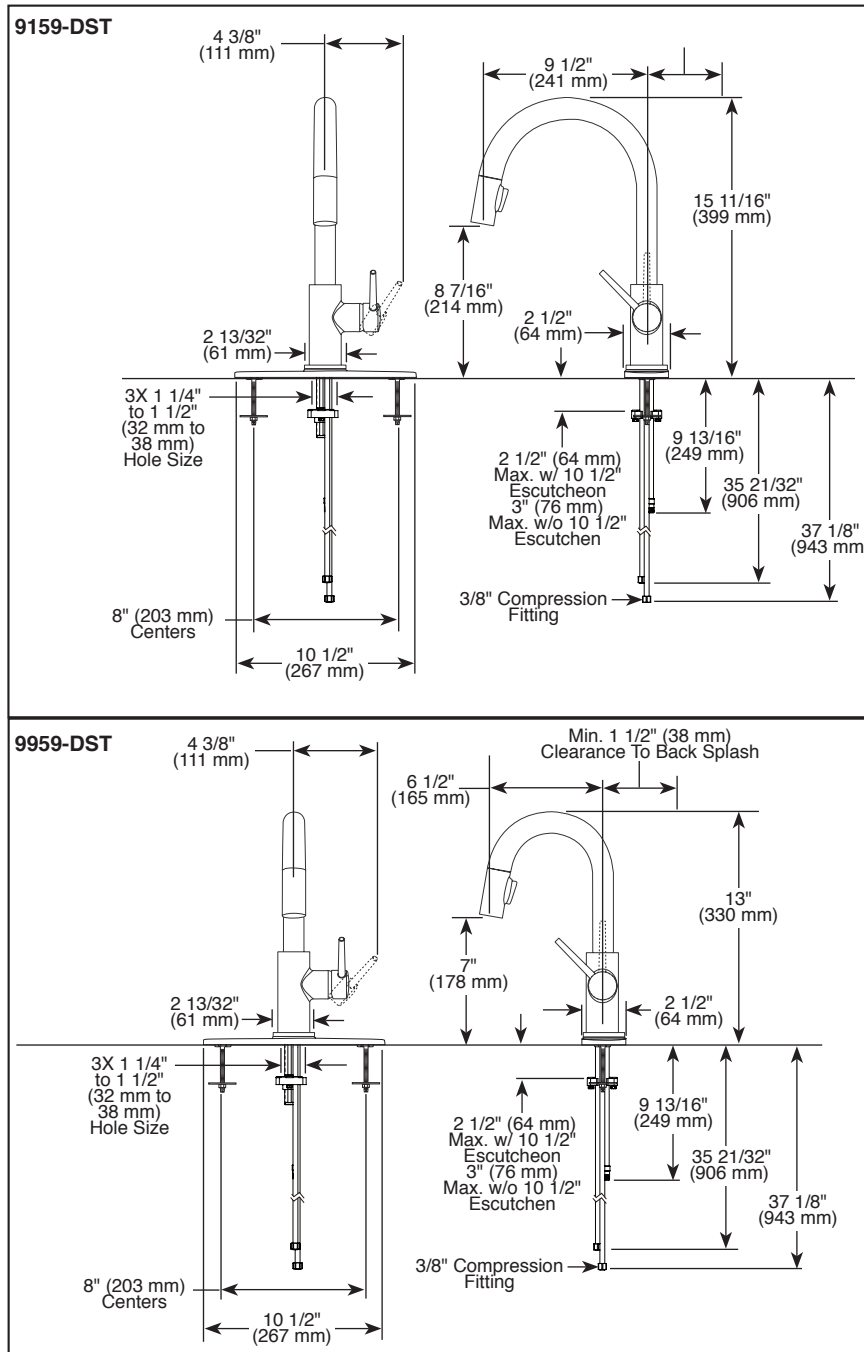






Submitted Model No.: \_\_\_\_\_

Specific Features: \_\_\_\_\_



▲ Designate proper finish suffix

Delta reserves the right (1) to make changes in specifications and materials, and (2) to change or discontinue models, both without notice or obligation. Dimensions are for reference only. See current full-line price book or [www.deltafaucet.com](http://www.deltafaucet.com) for finish options and product availability.

DSP-K-9159-DST Rev. F



see what Delta can do<sup>SM</sup>

## KITCHEN FAUCETS

- Trinsic® Collection
- Single Handle Deck Mount
- 2-Function Pull-Down Sprayer

### FEATURES:

- MagnaTite® Magnetic System
- DIAMOND Seal® Technology
- Touch-Clean® Sprayhead

### STANDARD SPECIFICATIONS:

- Maximum 1.8 gpm @ 60 psi, 6.8 L/min @ 414 kPa
- One or three hole mount (escutcheon optional, not included)
- Spout rotates 360°
- Control mechanism shall be full-motion valve cartridge
- Two-function wand; Aerated stream or spray
- Red/blue indicator markings
- Dual integral check valves in sprayer
- Quick connect hoses

### WARRANTY

- Parts and Finish - Lifetime limited warranty; or for commercial purchasers, 10 years for multi-family residential (apartments and condominiums) and 5 years for all other commercial uses, in each case from the date of purchase.
- Electronic Parts and Batteries (if applicable) - 5 years from the date of purchase; or for commercial purchasers, 1 year from the date of purchase. No warranty is provided on batteries.

### COMPLIES WITH:

- ASME A112.18.1 / CSA B125.1
- ASME A112.18.6
- Indicates compliance to ICC/ANSI A117.1
- Verified compliant with .25% weighted average Pb content regulations.



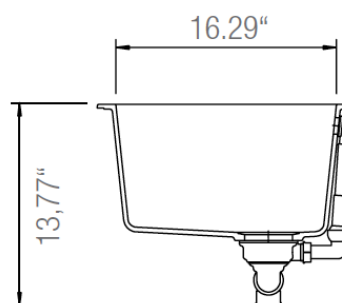
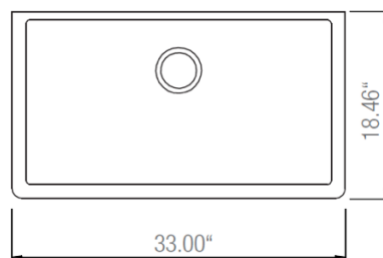
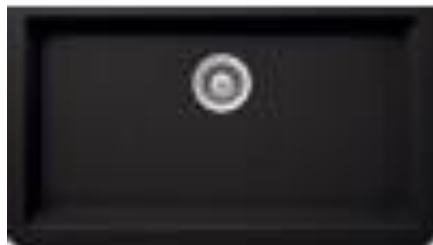
### Delta Faucet Company

55 E. 111th Street, Indianapolis, IN 46280  
350 South Edgeware Road, St. Thomas, ON N5P 4L1  
© 2019 Delta Faucet Company

## Product Specification Sheet



### Virtuo Granite Undermount Single Sink B317 - B318 - B319 - B329 - B336



#### Colour Finish

Pearl Black

Coffee Brown

Slate Grey

Asphalt

Stone Taupe

#### Model No.

B317

B318

B319

B329

B336

#### Description

- 33" x 18-1/2" x 9-1/4" Deep
- 80% Quartz Content
- 3 1/2" drain opening
- Supplied with installation clips, template & strainers
- CUPC certified

#### Available accessories

- Matching Strainer
- Drying Rack
- BG317/318/319/329/336 - Stainless Steel Grid



#### MAIN LOCATION

##### BRISTOL SINKS

56 Firestone Blvd  
London, Ontario  
N5W 6E6

#### WESTERN LOCATION

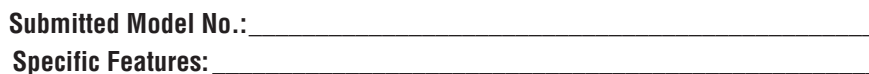
##### BRISTOL SINKS

964 72nd Avenue NE  
Calgary, Alberta  
T2E 8V9

#### CONTACT

Tel: 1(800) 930-0214  
Fax: 1(866) 310-7580  
Email: sales@bristolsinks.com





Delta reserves the right (1) to make changes in specifications and materials, and (2) to change or discontinue models, both without notice or obligation. Dimensions are for reference only. See current full-line price book or [www.deltafaucet.com](http://www.deltafaucet.com) for finish options and product availability.



## LAVATORY FAUCETS

- Trinsic® Collection
- High Arc Swivel Spout

- Euro-Motion Diamond™ Valve

- Max. 1.20 gpm @ 60 psi, 4.54 L/min @ 414 kPa (559HA-DST)
- Max. 1.00 gpm @ 60 psi, 3.80 L/min @ 414 kPa (559HA-GPM-DST)
- Single hole mount
- Spout swivels 360°
- Solid metal construction
- Diamond coated ceramic cartridge
- Red/blue indicator markings
- Models include metal push-pop drain

- Lifetime limited warranty on parts (other than electronic parts and batteries) and finishes: or, for commercial users, for 5 years from date of purchase.
- 5 year limited warranty on electronic parts (other than batteries); or, for commercial users, for 1 year from the date of purchase. No warranty is provided on batteries.

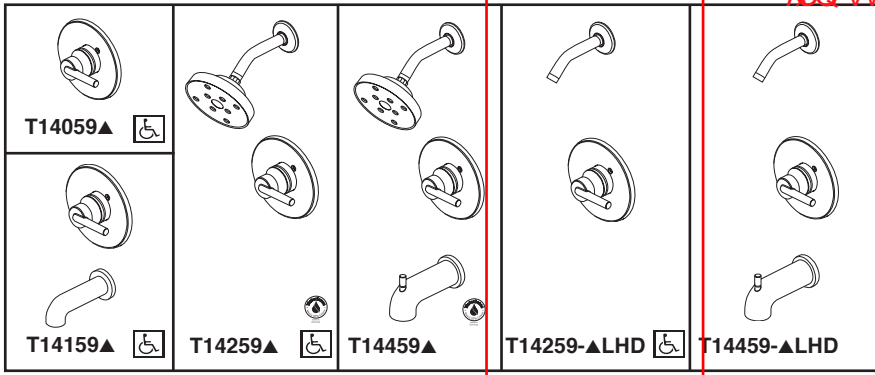


- ASME A112.18.1 / CSA B125.1
- ASME A112.18.2 / CSA B125.2

- Indicates compliance to ICC/ANSI A117.1
- EPA WaterSense®
- Verified compliant with .25% weighted average Pb content regulations.



55 E. 111th Street, Indianapolis, Indiana 46280  
350 South Edgeware Road, St. Thomas, ON N5P 4L1  
© 2016 Masco Corporation of Indiana



see what Delta can do™

## Á TUB AND SHOWER FAUCET TRIM

- Trinsic® Bath Collection
- Valve Only (T14059)
- Tub Only (T14159)
- Shower Only (T14259)
- Tub/Shower (T14459)

### FEATURES:

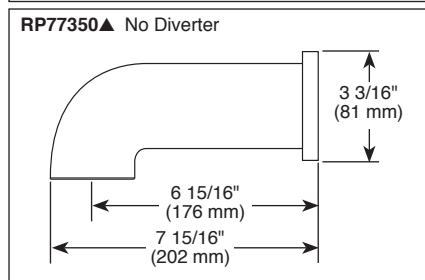
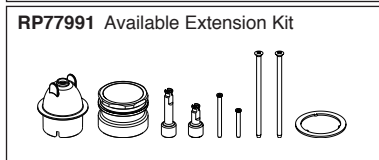
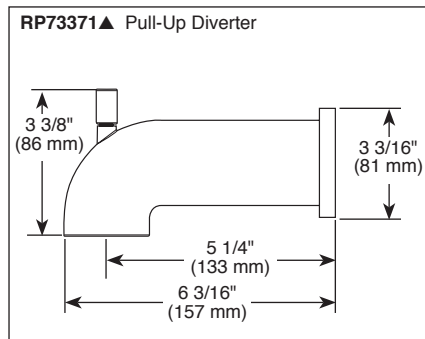
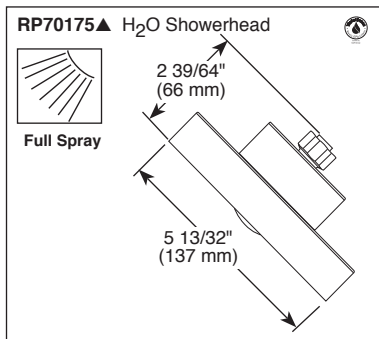
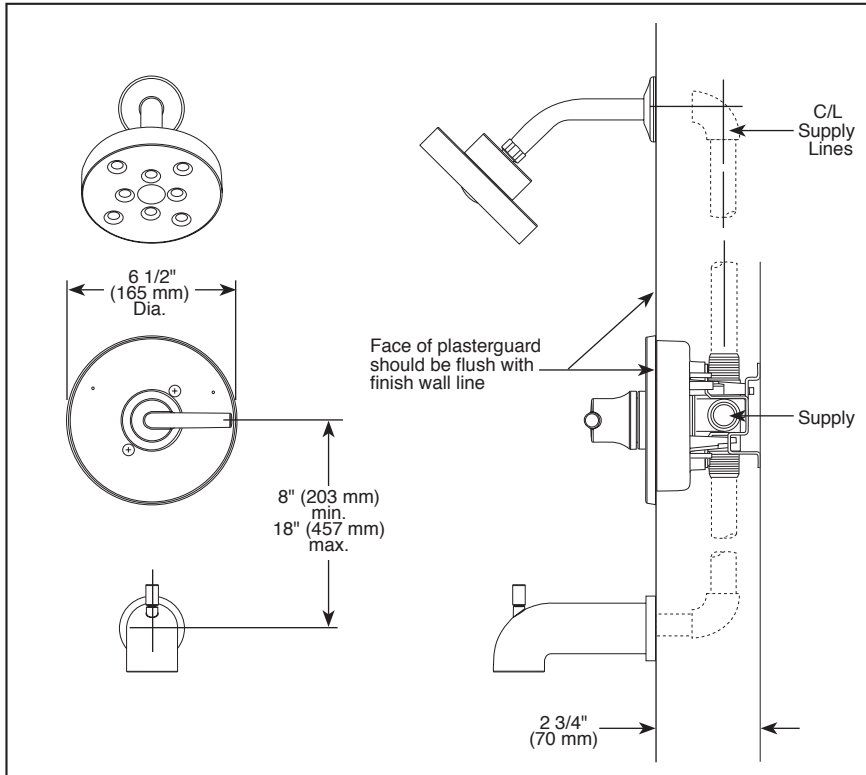
- Monitor® 14 Series pressure balanced single handle bath mixing valve trim
- Single function H<sub>2</sub>Okinetic® Technology showerhead

### STANDARD SPECIFICATIONS:

- Maintains a balanced pressure of hot and cold water even when a valve is turned on or off elsewhere in the system
- For use with MultiChoice® Universal rough valve body (R10000 Series)
- Temperature only controlled with handle
- Field adjustable means to limit handle rotation into hot water zone
- 120° maximum handle rotation
- Maximum 1.75 gpm @ 80 psi, 6.6 L/min @ 550 kPa
- Red/blue pad print temperature indicators on escutcheon
- "-LHD" models indicate less showerhead
- 1/2" CWT slip-on spout adapter
- Stem extension kit RP77991 can be ordered to allow for an additional 1 3/4" wall thickness. RP77991 ships with chrome escutcheon screws. For special finishes also order RP12630 escutcheon screws in desired finish.

### WARRANTY

- Lifetime limited warranty on parts (other than electronic parts and batteries) and finishes; or, for commercial users, for 5 years from date of purchase.
- 5 year limited warranty on electronic parts (other than batteries); or, for commercial users, for 1 year from the date of purchase. No warranty is provided on batteries.

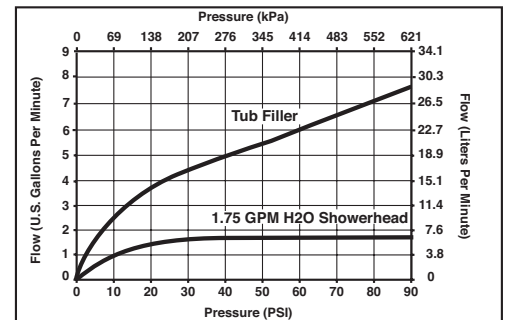


▲ Designate Proper Finish Suffix



### COMPLIES WITH:

- ASME A112.18.1 / CSA B125.1
- ASSE 1016
- ICC/ANSI A117.1 - Valve control only
- EPA WaterSense®



### Delta Faucet Company

55 E. 111th Street, Indianapolis, IN 46280  
350 South Edgeware Road, St. Thomas, ON N5P 4L1  
© 2017 Delta Faucet Company

Delta reserves the right (1) to make changes in specifications and materials, and (2) to change or discontinue models, both without notice or obligation. Dimensions are for reference only. See current full-line price book or [www.deltafaucet.com](http://www.deltafaucet.com) for finish options and product availability.

DSP-B-T14059 Rev. K