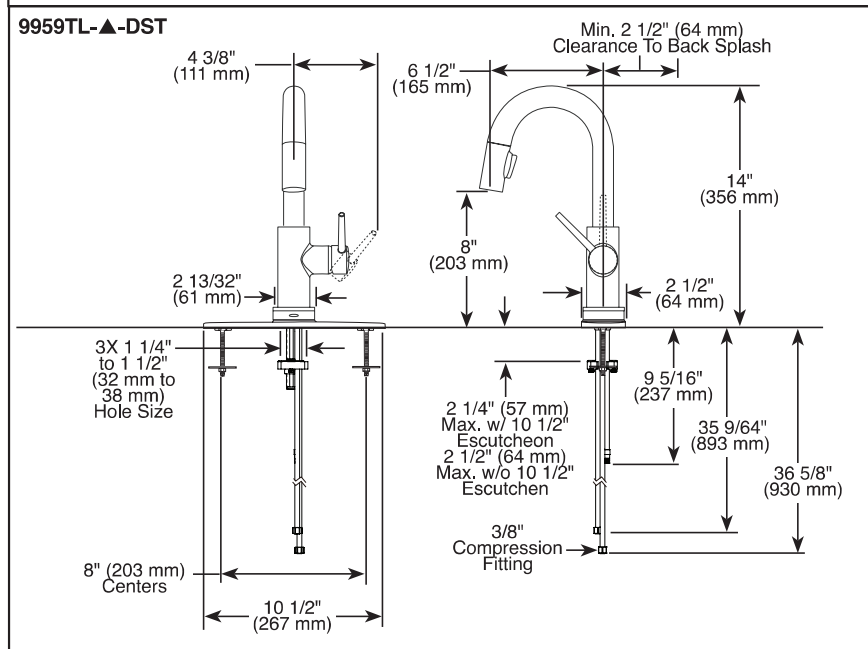
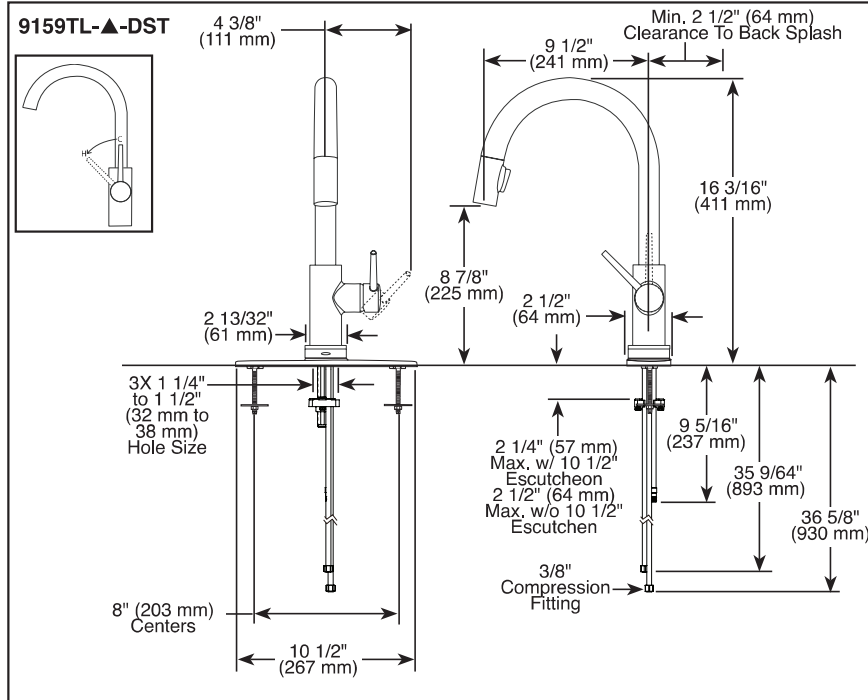


Submitted Model No.: \_\_\_\_\_

Specific Features: \_\_\_\_\_



▲ Designate proper finish suffix

Delta reserves the right (1) to make changes in specifications and materials, and (2) to change or discontinue models, both without notice or obligation. Dimensions are for reference only. See current full-line price book or [www.deltafaucet.com](http://www.deltafaucet.com) for finish options and product availability.

DSP-K-9159TL-DST Rev. A



see what Delta can do™

**KITCHEN FAUCETS**

- Trinsic® Collection
- Single Handle Pull-Down

**FEATURES:**

- Touch<sub>2</sub>O® with Touchless Technology
- DIAMOND Seal® Technology
- MagnaTite® Magnetic Docking
- Touch-Clean® Sprayhead

**STANDARD SPECIFICATIONS:**

- Maximum 1.8 gpm @ 60 psi, 6.8 L/min @ 414 kPa
- One or three hole mount (escutcheon optional, not included)
- Diamond coated ceramic cartridge
- 3/8" O.D. straight, staggered PEX supply lines
- Spout rotates 360°
- Red/Blue indicator markings
- Two-function wand; Aerated stream or spray
- Dual integral check valves in sprayer
- Quick Snap® connect hoses
- LED indicator light signals on-off, water temperature and when batteries run low
- Uses 6 AA (included) or 6 C (optional) batteries
- Toggle between Touchless and Touch<sub>2</sub>O® only settings

**WARRANTY**

- Parts and Finish - Lifetime limited warranty; or for commercial purchasers, 10 years for multi-family residential (apartments and condominiums) and 5 years for all other commercial uses, in each case from the date of purchase.
- Electronic Parts and Batteries (if applicable) - 5 years from the date of purchase; or for commercial purchasers, 1 year from the date of purchase. No warranty is provided on batteries.

**COMPLIES WITH:**

- ASME A112.18.1 / CSA B125.1
- ASME A112.18.6
- Indicates compliance to ICC/ANSI A117.1- Valve control only

DS Initial

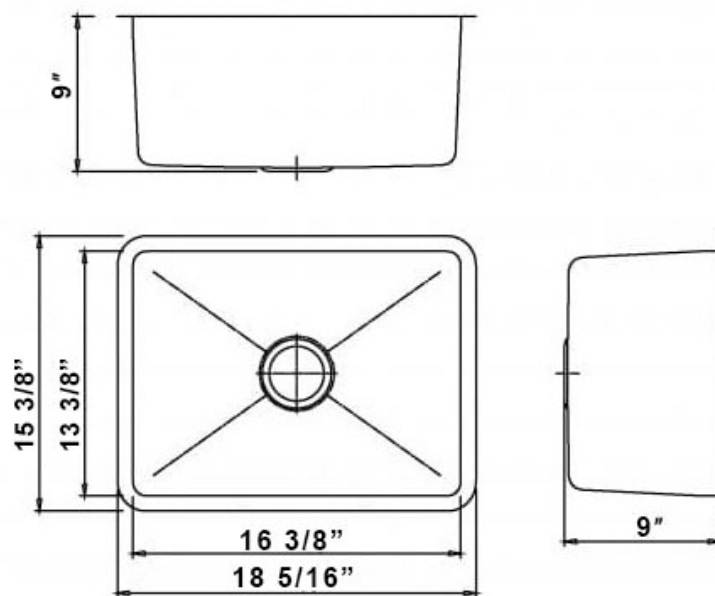
**Delta Faucet Company**

55 E. 111th Street, Indianapolis, IN 46280  
350 South Edgeware Road, St. Thomas, ON N5P 4L1  
© 2023 Delta Faucet Company

## Product Specification Sheet



### B1614 Stainless Steel Single Bowl 16 Gauge



**Colour Finish**  
Stainless Steel

**Model No.**  
B1614

#### Description

- Double Bowl Stainless Steel Sink 16 Gauge
- Outside dimensions: 18 5/16" x 15 3/8" x 9"
- Minimum Cabinet Size: 20"
- Stainless Steel Single Bowl Sink
- 16 Gauge Type 304 Stainless Steel
- Stone Guard undercoating over rubber pad
- 3 1/2" drain opening
- Supplied with installation clip, template and strainer
- CUPC certified

#### Available accessories

- BG1614 - Stainless Steel Grid
- Colander Strainer - Stainless Steel
- Drying Rack

#### MAIN LOCATION

**BRISTOL SINKS**  
56 Firestone Blvd  
London, Ontario  
N5W 6E6

#### WESTERN LOCATION

**BRISTOL SINKS**  
964 72nd Avenue NE  
Calgary, Alberta  
T2E 8V9

#### CONTACT

Tel: 1 (800) 930-0214  
Fax: 1 (866) 310-7580  
Email: sales@bristolsinks.com



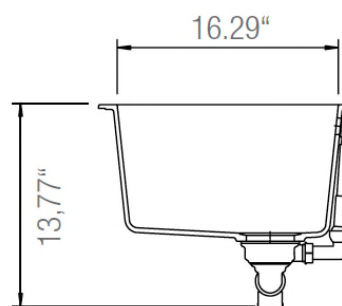
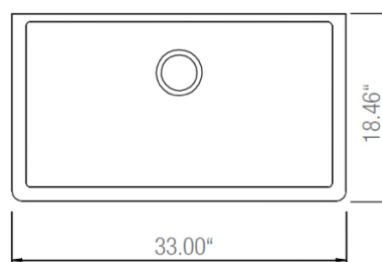
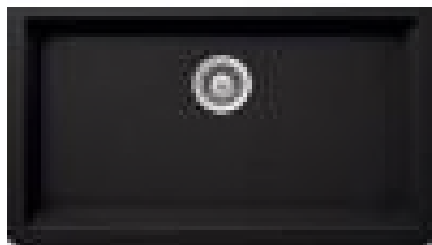
Product Specification Sheet



Virtuo Granite Undermount Single Sink

~~B317 - B318 - B319 - B329 - B336~~

B342 - WHITE



Colour Finish

Pearl Back

Coffee Brown

Slate Grey

Asphalt

Stone Taupe

Model No.

B317

B318

B319

B329

B336

Description

- 33" x 18-1/2" x 9-1/4" Deep
- 80% Quartz Content
- 3 1/2" drain opening
- Supplied with installation clips, template & strainers
- CUPC certified

Available accessories

- Matching Strainer
- Drying Rack
- BG317/318/319/329/336 - Stainless Steel Grid

MAIN LOCATION

BRISTOL SINKS

56 Firestone Blvd  
London, Ontario  
N5W 6E6

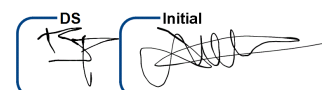
WESTERN LOCATION

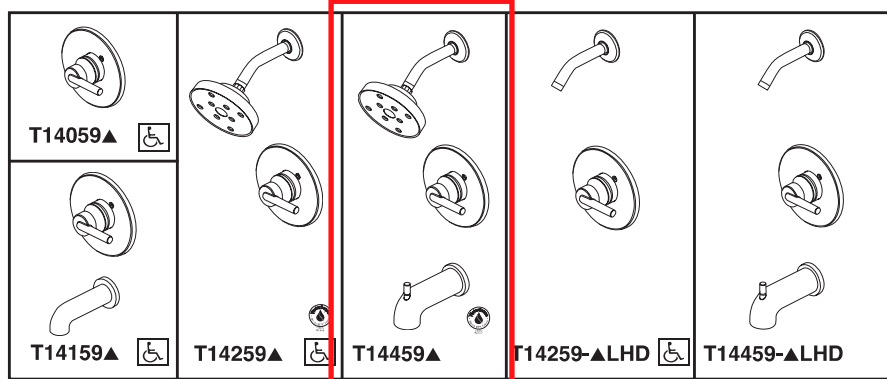
BRISTOL SINKS

964 72nd Avenue NE  
Calgary, Alberta  
T2E 8V9

CONTACT

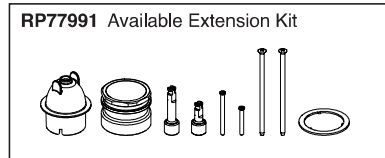
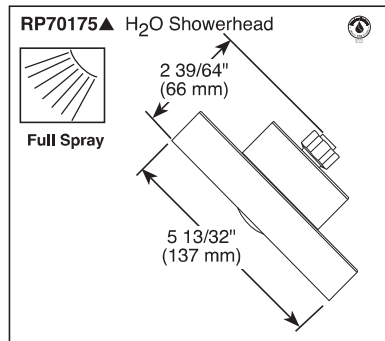
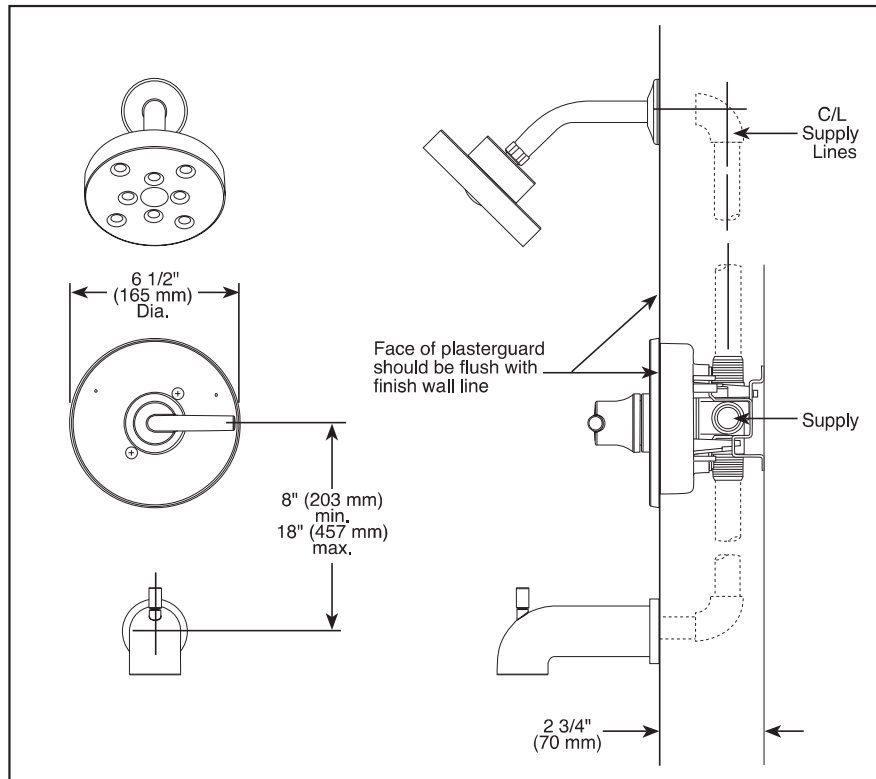
Tel: 1 (800) 930-0214  
Fax: 1 (866) 310-7580  
Email: sales@bristolsinks.com



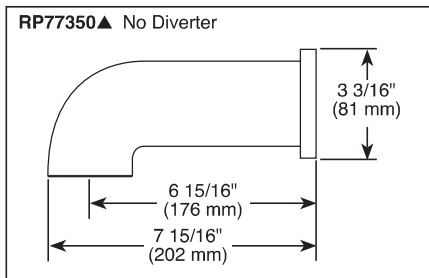
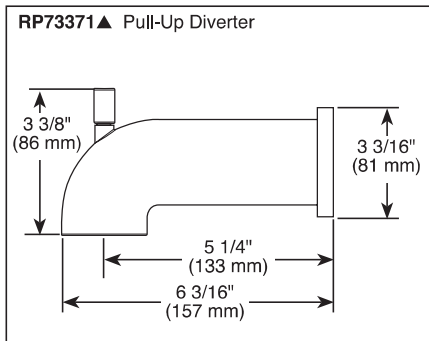


Submitted Model No.: \_\_\_\_\_

Specific Features: \_\_\_\_\_



▲ Designate Proper Finish Suffix



see what Delta can do™

## TUB AND SHOWER FAUCET TRIM

- Trinsic® Bath Collection
- Valve Only (T14059)
- Tub Only (T14159)
- Shower Only (T14259)
- Tub/Shower (T14459)

### FEATURES:

- Monitor® 14 Series pressure balanced single handle bath mixing valve trim
- Single function H<sub>2</sub>Okinetic® Technology showerhead

### STANDARD SPECIFICATIONS:

- Maintains a balanced pressure of hot and cold water even when a valve is turned on or off elsewhere in the system
- For use with MultiChoice® Universal rough valve body (R10000 Series)
- Temperature only controlled with handle
- Field adjustable means to limit handle rotation into hot water zone
- 120° maximum handle rotation
- Maximum 1.75 gpm @ 80 psi, 6.6 L/min @ 550 kPa
- Red/blue pad print temperature indicators on escutcheon
- "LHD" models indicate less showerhead
- 1/2" CWT slip-on spout adapter
- Stem extension kit RP77991 can be ordered to allow for an additional 1 3/4" wall thickness. RP77991 ships with chrome escutcheon screws. For special finishes also order RP12630 escutcheon screws in desired finish.

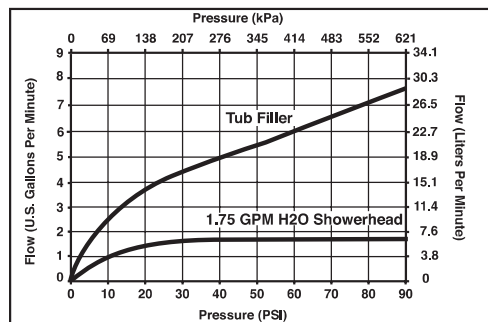
### WARRANTY

- Lifetime limited warranty on parts (other than electronic parts and batteries) and finishes; or, for commercial users, for 5 years from date of purchase.
- 5 year limited warranty on electronic parts (other than batteries); or, for commercial users, for 1 year from the date of purchase. No warranty is provided on batteries.



### COMPLIES WITH:

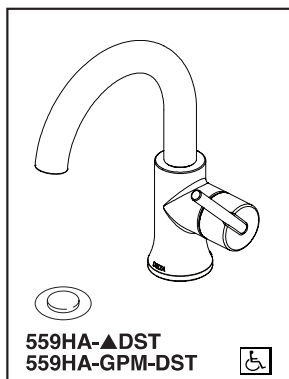
- ASME A112.18.1 / CSA B125.1
- ASSE 1016
- Indicates compliance to ICC/ANSI A117.1 - Valve control only
- EPA WaterSense®



**Delta Faucet Company**  
 55 E. 111th Street, Indianapolis, IN 46280  
 350 South Edgeware Road, St. Thomas, ON N5P 4L1  
 © 2017 Delta Faucet Company

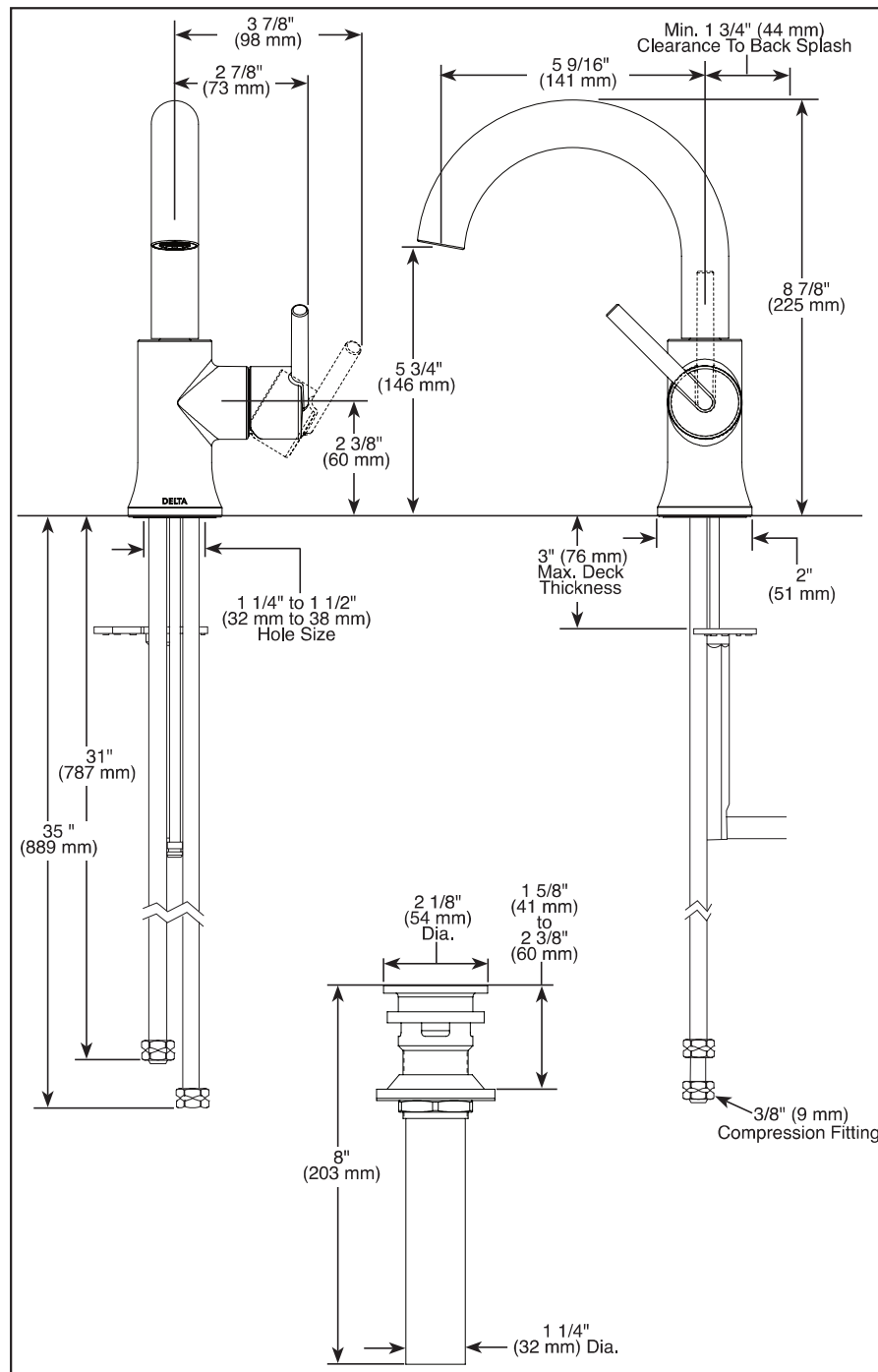
Delta reserves the right (1) to make changes in specifications and materials, and (2) to change or discontinue models, both without notice or obligation. Dimensions are for reference only. See current full-line price book or www.deltafaucet.com for finish options and product availability.

DSP-B-T14059 Rev. K



Submitted Model No.: \_\_\_\_\_

Specific Features: \_\_\_\_\_



▲ Designate Proper Finish Suffix

Delta reserves the right (1) to make changes in specifications and materials, and (2) to change or discontinue models, both without notice or obligation. Dimensions are for reference only. See current full-line price book or [www.deltafaucet.com](http://www.deltafaucet.com) for finish options and product availability.

DSP-L-559HA-DST Rev. C



## LAVATORY FAUCETS

- Trinsic® Collection
- High Arc Swivel Spout

### FEATURES:

- Euro-Motion Diamond™ Valve

### STANDARD SPECIFICATIONS:

- Max. 1.20 gpm @ 60 psi, 4.54 L/min @ 414 kPa (559HA-DST)
- Max. 1.00 gpm @ 60 psi, 3.80 L/min @ 414 kPa (559HA-GPM-DST)
- Single hole mount
- Spout swivels 360°
- Solid metal construction
- Diamond coated ceramic cartridge
- Red/blue indicator markings
- Models include metal push-pop drain

### WARRANTY

- Lifetime limited warranty on parts (other than electronic parts and batteries) and finishes; or, for commercial users, for 5 years from date of purchase.
- 5 year limited warranty on electronic parts (other than batteries); or, for commercial users, for 1 year from the date of purchase. No warranty is provided on batteries.



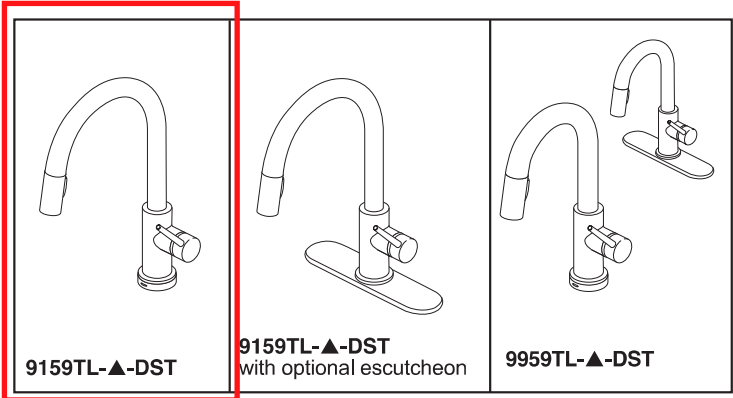
### COMPLIES WITH:

- ASME A112.18.1 / CSA B125.1
- ASME A112.18.2 / CSA B125.2
- Indicates compliance to ICC/ANSI A117.1
- EPA WaterSense®
- Verified compliant with .25% weighted average Pb content regulations.

DS Initial

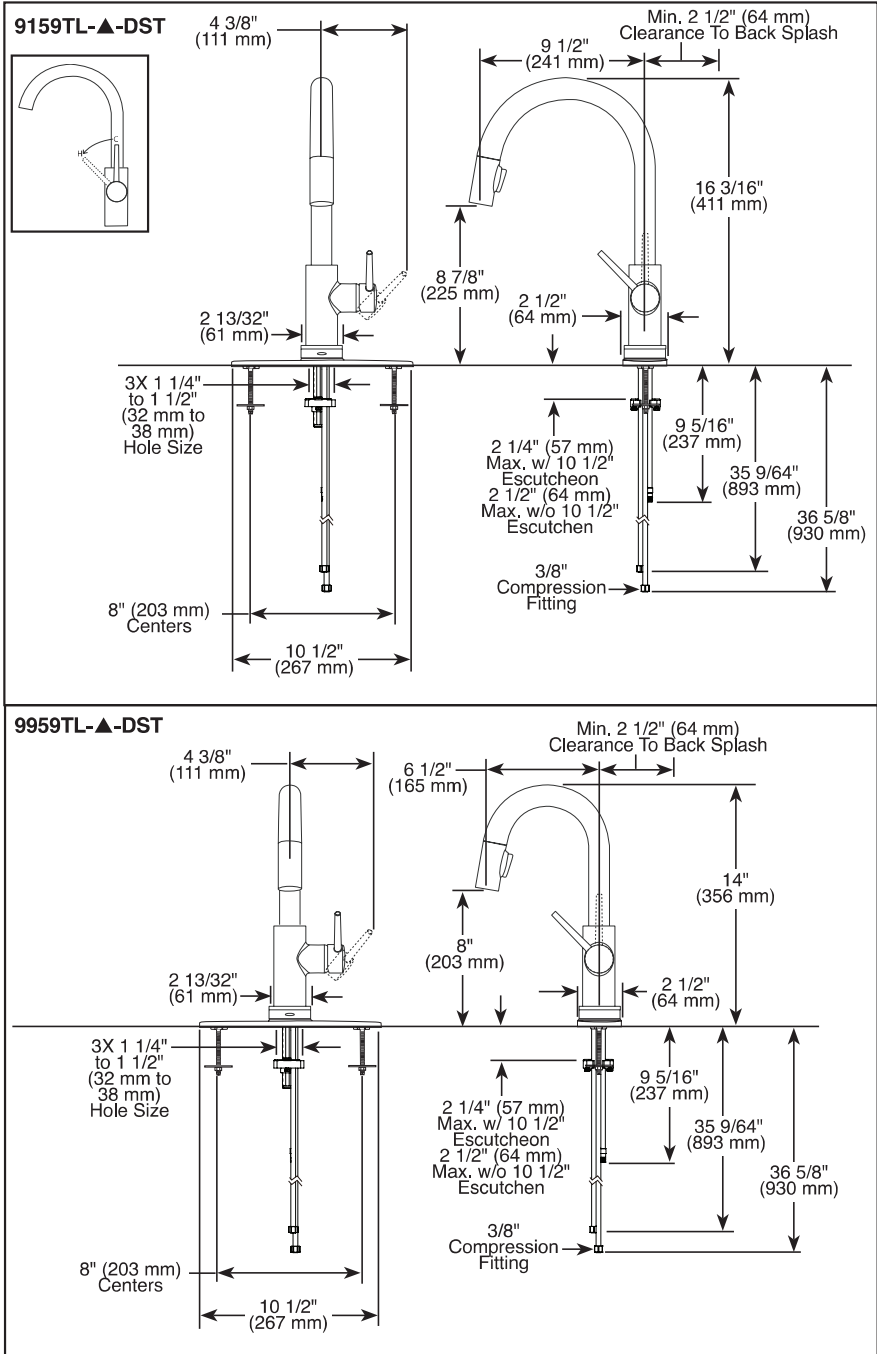


55 E. 111th Street, Indianapolis, Indiana 46280  
350 South Edgeware Road, St. Thomas, ON N5P 4L1  
© 2016 Masco Corporation of Indiana



Submitted Model No.: \_\_\_\_\_

Specific Features: \_\_\_\_\_



▲ Designate proper finish suffix

Delta reserves the right (1) to make changes in specifications and materials, and (2) to change or discontinue models, both without notice or obligation. Dimensions are for reference only. See current full-line price book or [www.deltafaucet.com](http://www.deltafaucet.com) for finish options and product availability.

DSP-K-9159TL-DST Rev. A



see what Delta can do™

## KITCHEN FAUCETS

- Trinsic® Collection
- Single Handle Pull-Down

### FEATURES:

- Touch<sub>2</sub>O® with Touchless Technology
- DIAMOND Seal® Technology
- MagnaTite® Magnetic Docking
- Touch-Clean® Sprayhead

### STANDARD SPECIFICATIONS:

- Maximum 1.8 gpm @ 60 psi, 6.8 L/min @ 414 kPa
- One or three hole mount (escutcheon optional, not included)
- Diamond coated ceramic cartridge
- 3/8" O.D. straight, staggered PEX supply lines
- Spout rotates 360°
- Red/Blue indicator markings
- Two-function wand; Aerated stream or spray
- Dual integral check valves in sprayer
- Quick Snap® connect hoses
- LED indicator light signals on-off, water temperature and when batteries run low
- Uses 6 AA (included) or 6 C (optional) batteries
- Toggle between Touchless and Touch<sub>2</sub>O® only settings

### WARRANTY

- Parts and Finish - Lifetime limited warranty; or for commercial purchasers, 10 years for multi-family residential (apartments and condominiums) and 5 years for all other commercial uses, in each case from the date of purchase.
- Electronic Parts and Batteries (if applicable) - 5 years from the date of purchase; or for commercial purchasers, 1 year from the date of purchase. No warranty is provided on batteries.

### COMPLIES WITH:

- ASME A112.18.1 / CSA B125.1
- ASME A112.18.6
- Indicates compliance to ICC/ANSI A117.1- Valve control only

DS Initial

**Delta Faucet Company**  
55 E. 111th Street, Indianapolis, IN 46280  
350 South Edgeware Road, St. Thomas, ON N5P 4L1  
© 2023 Delta Faucet Company



Submitted Model No.: \_\_\_\_\_

Specific Features: \_\_\_\_\_



see what Delta can do™

# PERSONAL HAND HELD SHOWERS

## ■ Touch-Clean® Nozzles

### STANDARD SPECIFICATIONS:

- Maximum 2.5 gpm @ 80 psi, 9.5 L/min @ 550 kPa (57014 only)
- Maximum 1.75 gpm @ 80 psi, 6.6 L/min @ 550 kPa
- Hand held shower with one or three spray settings
- 60"-82" stretchable metal hose
- Certified dual check valves for backflow protection
- 24" (610 mm) wall bar with adjustable slide (allows for adjustable shower height) - 57014, 57021, 57051 and 57085 only. Not to be used as a Grab Bar. Not ADA compliant
- Wall mount bracket - 55013, 55020, 55021, 55051 and 55085 only

### WARRANTY

- Lifetime limited warranty on parts (other than electronic parts and batteries) and finishes: or, for commercial users, for 5 years from date of purchase.
- 5 year limited warranty on electronic parts (other than batteries); or, for commercial users, for 1 year from the date of purchase. No warranty is provided on batteries.

### COMPLIES WITH:

- ASME A112.18.1/CSA B125.1 ♦
- EPA WaterSense®

<p><b>57014▲ 2.5 GPM</b></p>	<p><b>57021▲ 1.75 GPM</b></p>	<p><b>57051▲ 1.75 GPM</b></p>
<p><b>57085▲ 1.75 GPM</b></p>	<p><b>55013▲ 1.75 GPM</b></p>	<p><b>55020▲ 1.75 GPM</b></p>
<p><b>55021▲ 1.75 GPM</b></p>	<p><b>55051▲ 1.75 GPM</b></p>	<p><b>55085▲ 1.75 GPM</b></p>

### ▲ Designate proper finish suffix

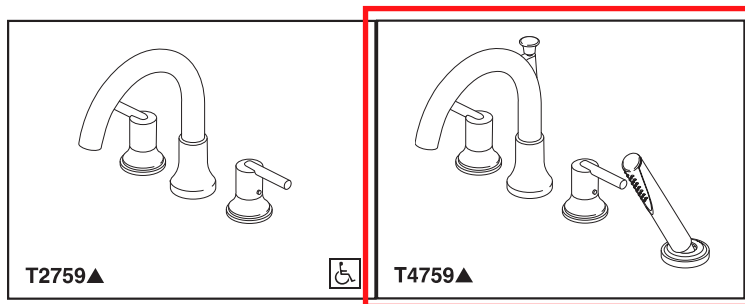
- Your Delta Faucet handshower incorporates a backflow protection system that has been tested to be in compliance with ASME A112.18.3 and ASME A112.18.1/CSA B125.1. It incorporates two certified check valves in series, which operate independently and are integral, non-serviceable parts of the wand assembly.

DS Initial

Delta reserves the right (1) to make changes in specifications and materials, and (2) to change or discontinue models, both without notice or obligation. Dimensions are for reference only. See current full-line price book or [www.deltafaucet.com](http://www.deltafaucet.com) for finish options and product availability.

DSP-B-55021 Rev. C

**Delta Faucet Company**  
55 E. 111th Street, Indianapolis, IN 46280  
350 South Edgeware Road, St. Thomas, ON N5P 4L1  
© 2017 Delta Faucet Company



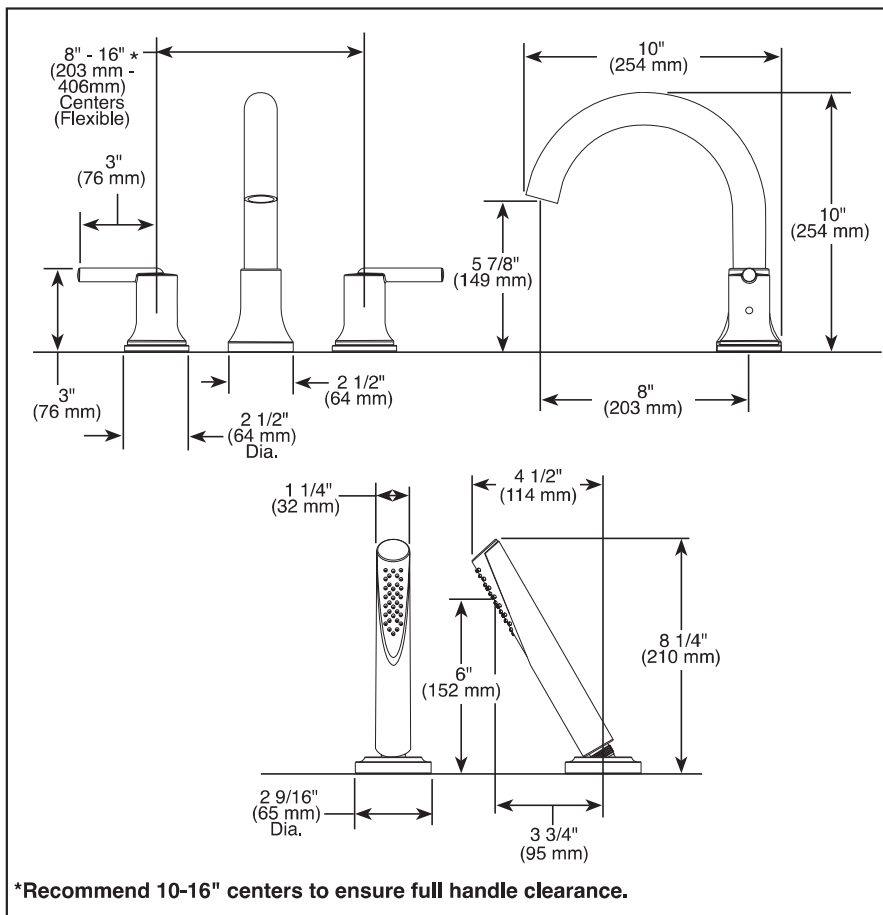
T2759▲



T4759▲

Submitted Model No.: \_\_\_\_\_

Specific Features: \_\_\_\_\_



\*Recommend 10-16" centers to ensure full handle clearance.

▲ Designate Proper Finish Suffix

see what Delta can do<sup>SM</sup>

## ROMAN TUB/WHIRLPOOL FAUCET TRIM

- Trinsic<sup>®</sup> Collection
- Three Hole Installation (T2759 Series)
- Four Hole Installation (T4759 Series)

### STANDARD SPECIFICATIONS:

- Handshower flow rate of 1.75 gpm @ 80 psi, 6.6 L/min @ 550 kPa
- Trim only for two handle Roman Tub faucet for concealed mounting
- Temperature and volume controlled with handles
- Red/blue indicator markings
- Rough-In kit must also be ordered to complete installation
  - R4707 for four hole
  - R2700 or R2707 for three hole
  - RP23601 for three hole 10" fixed installation
 There are separate specification sheets on each rough-in kit if more details are required
- Handshower includes double check valves for backflow prevention (T4759)

### WARRANTY

- Lifetime limited warranty on parts (other than electronic parts and batteries) and finishes: or, for commercial users, for 5 years from date of purchase.
- 5 year limited warranty on electronic parts (other than batteries); or, for commercial users, for 1 year from the date of purchase. No warranty is provided on batteries.



### COMPLETE VALVE COMPLIES WITH:

- ASME A112.18.1 / CSA B125.1
- Indicates compliance to ICC/ANSI A117.1 - Valve control only
- EPA WaterSense<sup>®</sup> - Applies to handshower only - RP73384\*

DS Initial