

SPECTRUM KITCHENS OTTAWA

DCR PHOENIX HOMES
117 WHITE TAIL RIDGE PH4

MODEL - NEWINGTON

KITCHEN

MOUNTING HEIGHT - 84

LINE 2 - MISSION WHITE

HARDWARE - HU65

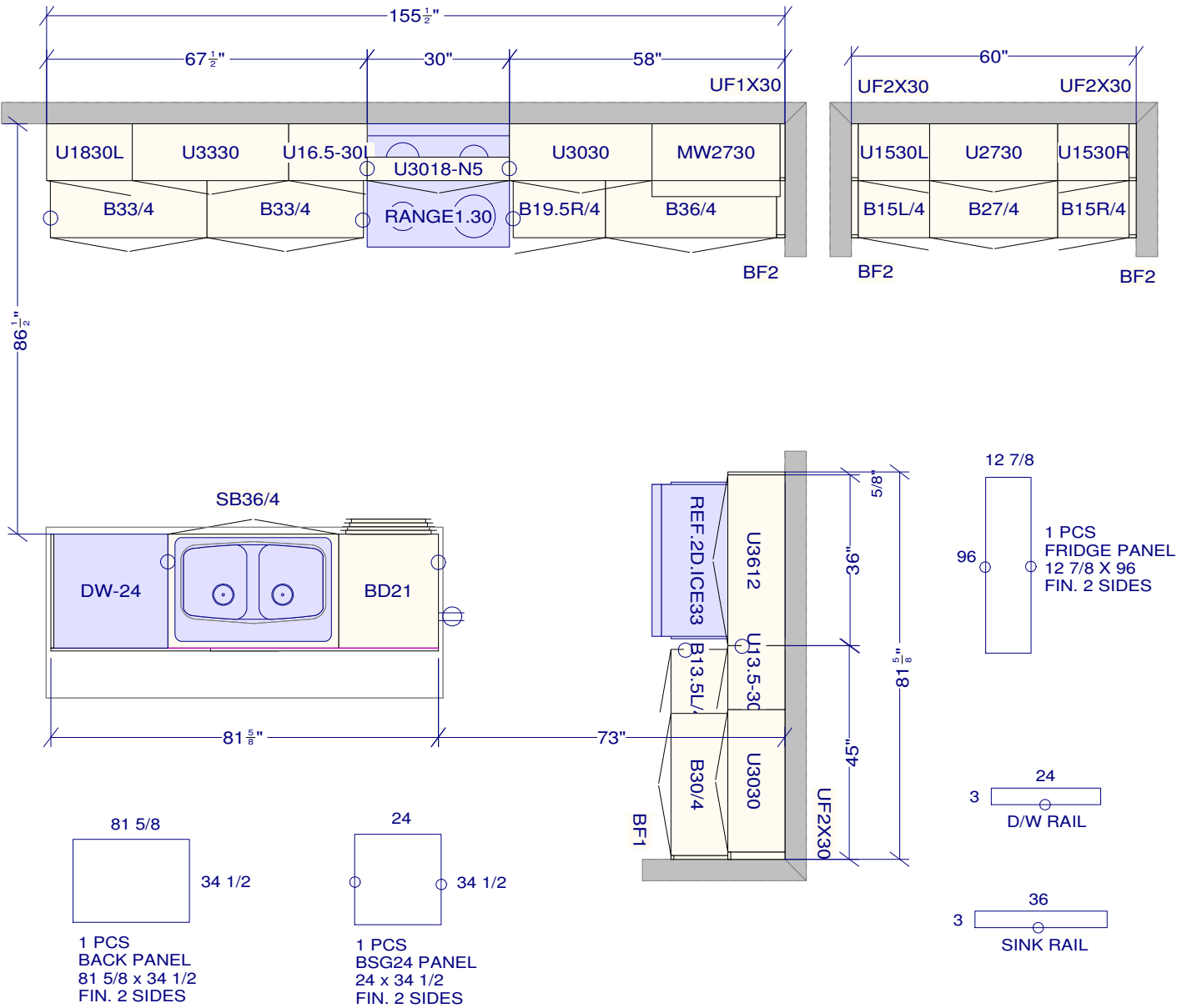
STANDARD WHITE INTERIOR

METAL DRAWER BOX

7 PCS - 5/8" KICK - FIN. BOTH ENDS

2 PCS - 90 DEG. CORNER MOULD

7 PCS - FLAT MOULDING



All dimensions and size designations given are subject to verification on job site and adjustment to fit job conditions.

This is an original design and must not be released or copied unless applicable fee has been paid or job order placed.

Designed: 2024-09-09
Printed: 2024-09-18

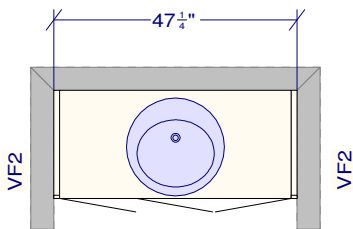
SPECTRUM KITCHENS OTTAWA

DCR PHOENIX HOMES
117 WHITE TAIL RIDGE PH4

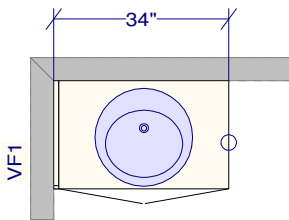
MODEL - NEWINGTON

VANITIES

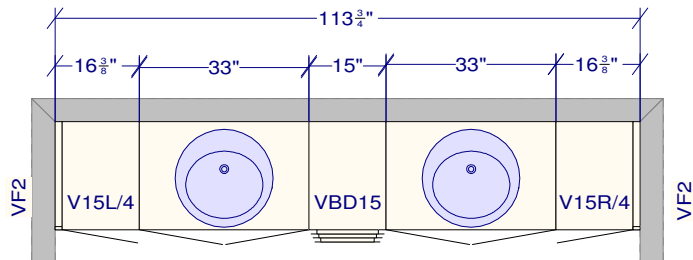
- VANITIES
- LINE 2 - MISSION WHITE
- HARDWARE - HU65
- STANDARD WHITE INTERIOR
- METAL DRAWER BOX
- 7 PCS - 5/8" KICK - FIN. BOTH ENDS
- 7 PCS - FLAT MOULDING



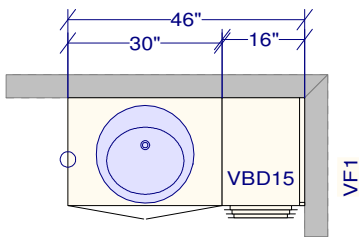
POWDER ROOM



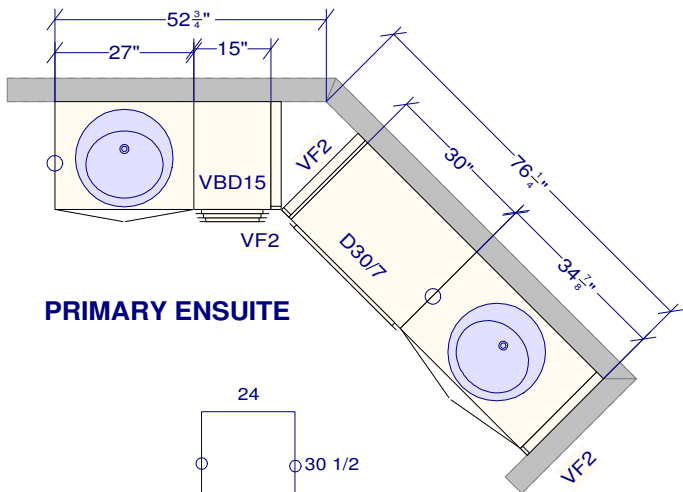
BEDROOM 4 ENSUITE



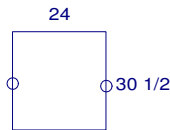
JACK AND JILL



IN-LAW SUITE



PRIMARY ENSUITE



1 PCS
VANITY PANEL
21 x 30 1/2
FIN. 2 SIDES

All dimensions and size designations given are subject to verification on job site and adjustment to fit job conditions.

This is an original design and must not be released or copied unless applicable fee has been paid or job order placed.

Designed: 2024-09-09
Printed: 2024-09-18