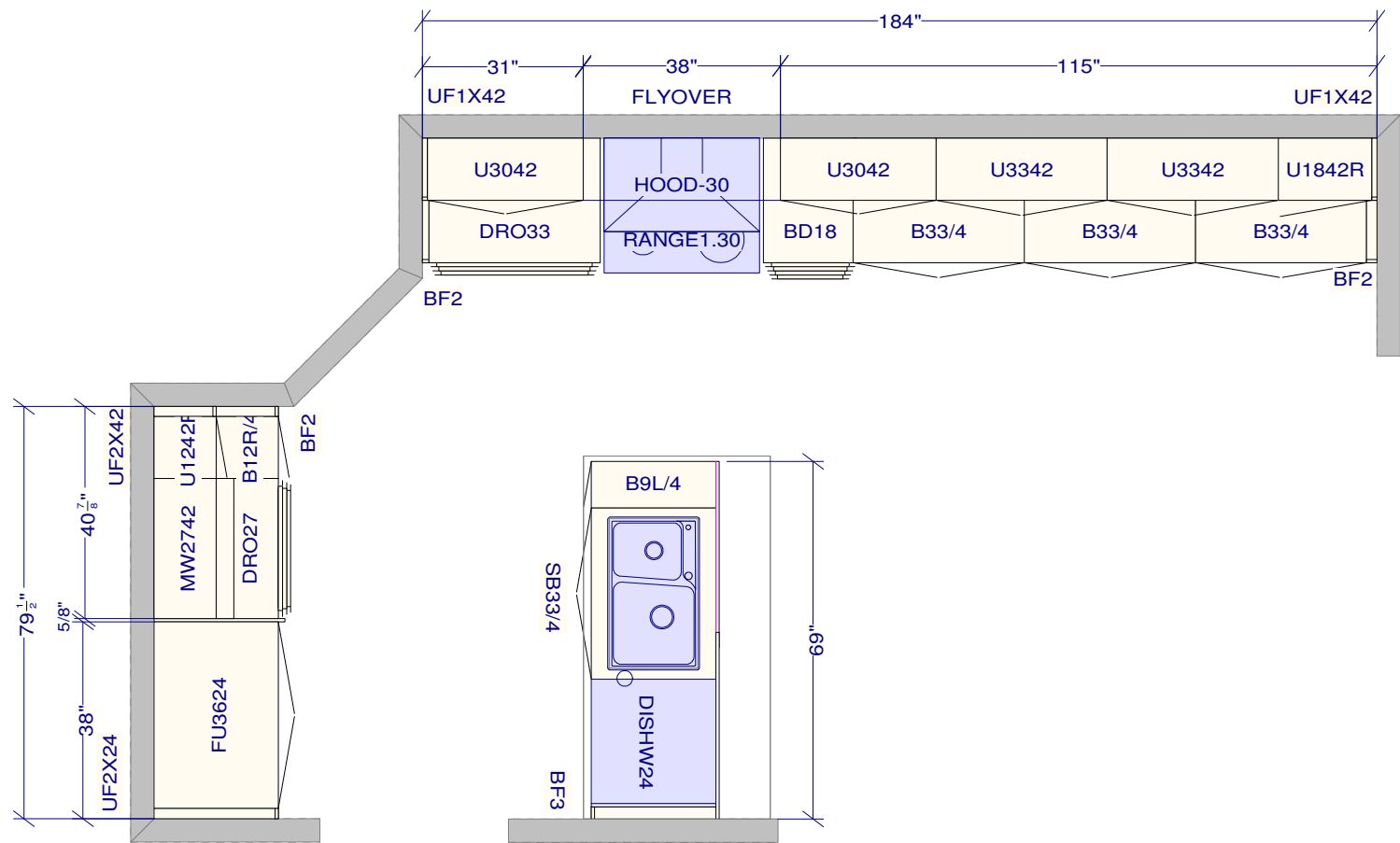


DCR PHOENIX HOMES  
361 PATHWAYS PH2

AS-BUILT - JULY 10-24



All dimensions ,size designations given are subject to verification on job site and adjustment to fit job conditions.

This is an original design and must not be released or copied unless applicable fee has been paid or job order placed.

Designed: 2024-07-03  
Printed: 2024-07-18

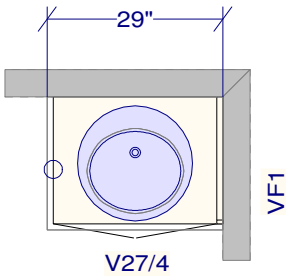
SPECTRUM KITCHENS OTTAWA

DCR PHOENIX HOMES  
361 PATHWAYS PH2

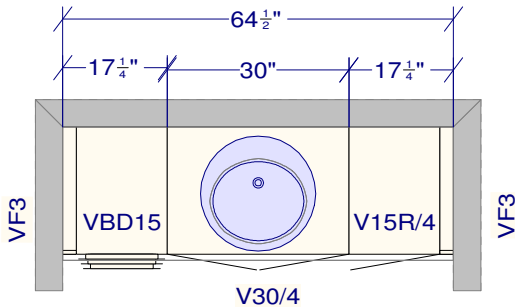
MODEL - MELBOURNE

VANITIES

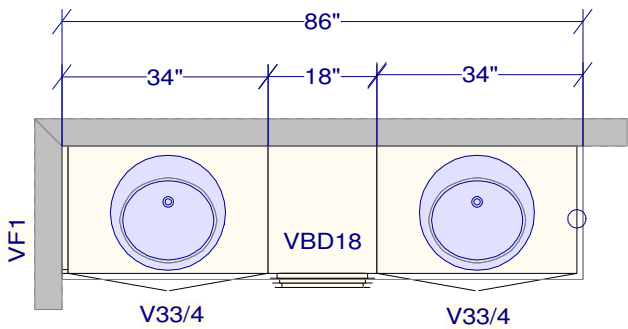
AS-BUILT - JULY 10-24



- POWDER
- LINE 3 - SOHO TAUPE OAK
- HARDWARE - HU64
- STANDARD WHITE INTERIOR
- METAL DRAWER BOX
- 1 PCS - 5/8" KICK - FIN. BOTH ENDS
- 1 PCS - FLAT MOULDING



- MAIN BATH
- LINE 2 - MISSION WILLOW GREY
- HARDWARE - HU64
- STANDARD WHITE INTERIOR
- METAL DRAWER BOX
- 1 PCS - 5/8" KICK - FIN. BOTH ENDS
- 1 PCS - FLAT MOULDING



- ENSUITE
- LINE 2 - MISSION WILLOW GREY
- HARDWARE - HU64
- STANDARD WHITE INTERIOR
- METAL DRAWER BOX
- 1 PCS - 5/8" KICK - FIN. BOTH ENDS
- 2 PCS - FLAT MOULDING

All dimensions _size designations given are subject to verification on job site and adjustment to fit job conditions.	This is an original design and must not be released or copied unless applicable fee has been paid or job order placed.	Designed: 2024-07-03 Printed: 2024-07-18	
DCR 361 Pathways2 Vanities.kit	All	Drawing #: 1	No Scale.