

SPECTRUM KITCHENS OTTAWA

DCR PHOENIX HOMES
281 PATHWAYS PH2

MODEL - KLONDIKE

KITCHEN

MOUNTING HEIGHT - 96 + FILL TO CEILING

LINE 3 - SOHO TAUPE MAPLE

HARDWARE - D1

STANDARD WHITE INTERIOR

SOFT CLOSING DRAWERS

SOFT CLOSING DOORS

6 PCS - 5/8" KICK - FIN. BOTH ENDS

2 PCS - 90 DEG. CORNER MOULD

1 PCS - T-MOULD

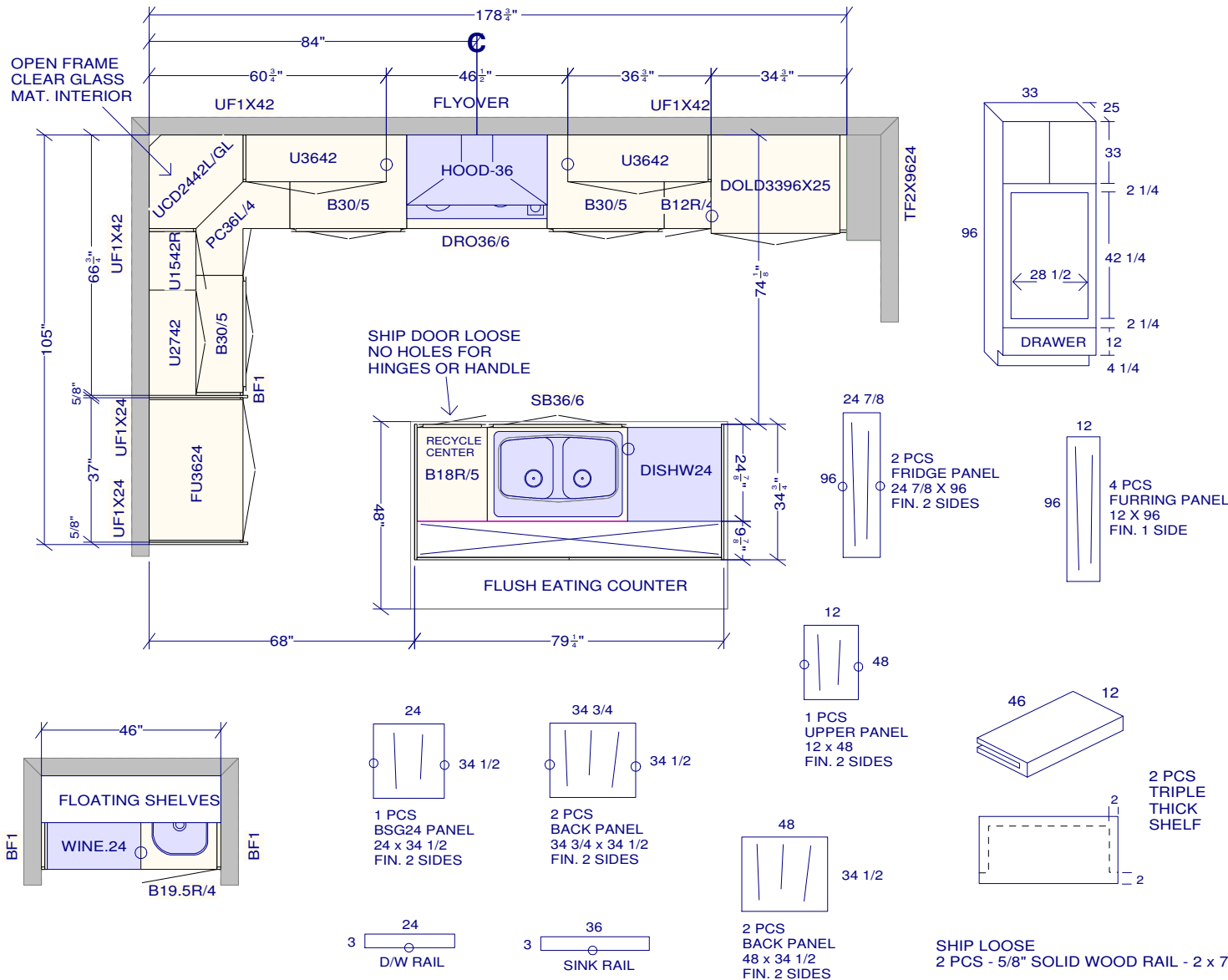
5 PCS - FLAT MOULDING

3 PCS - RECESSED VALANCE - 2" HIGH

2 PCS - RECESSED VALANCE - 1" HIGH

4 PCS - FLUSH KICK

4 PCS - CEILING CROWN



All dimensions and size designations given are subject to verification on job site and adjustment to fit job conditions.

This is an original design and must not be released or copied unless applicable fee has been paid or job order placed.

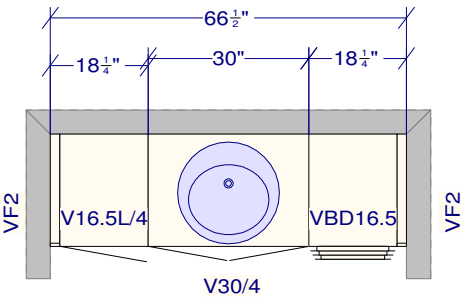
Designed: 2024-06-25
Printed: 2024-07-02

SPECTRUM KITCHENS OTTAWA

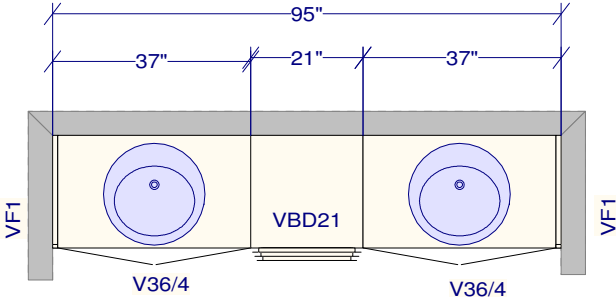
DCR PHOENIX HOMES
281 PATHWAYS PH2

MODEL - KLONDIKE

VANITIES



- MAIN BATH
- LINE 2 - MISSION WHITE SATIN
- HARDWARE - HU66
- STANDARD WHITE INTERIOR
- METAL DRAWER BOX
- 1 PCS - 5/8" KICK - FIN. BOTH ENDS
- 1 PCS - FLAT MOULDING

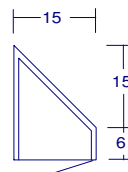
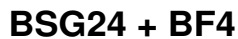


- ENSUITE
- LINE 1 - COMO SOLSTICE K49
- HARDWARE - D3
- STANDARD WHITE INTERIOR
- METAL DRAWER BOX
- 1 PCS - 5/8" KICK - FIN. BOTH ENDS
- 1 PCS - FLAT MOULDING

All dimensions _size designations given are subject to verification on job site and adjustment to fit job conditions.	This is an original design and must not be released or copied unless applicable fee has been paid or job order placed.	Designed: 2024-06-26 Printed: 2024-07-02	
DCR 281 Pathways2 Vanities ORDER.kit	All	Drawing #: 1	No Scale.

MOUNTING HEIGHT - 84

5 PCS - FLAT MOULDING



1 PCS - FLAT MOULDING

Drawing #: 1	No Scale.
--------------	-----------