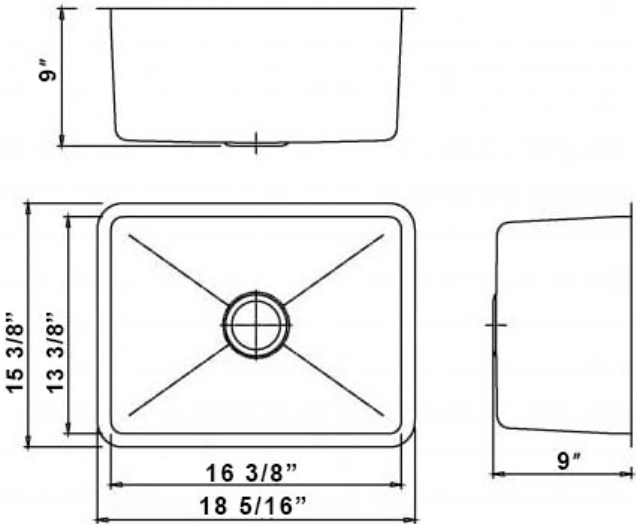


DV3 LOT 94 - BASEMENT BAR AND LAUNDRY ROOM SINK B1614



Product Specification Sheet

B1614 Stainless Steel Single Bowl 16 Gauge



Colour Finish
Stainless Steel

Model No.
B1614

- Description**
- Double Bowl Stainless Steel Sink 16 Gauge
 - Outside dimensions: 18 5/16" x 15 3/8" x 9"
 - Minimum Cabinet Size: 20"
 - Stainless Steel Single Bowl Sink
 - 16 Gauge Type 304 Stainless Steel
 - Stone Guard undercoating over rubber pad
 - 3 1/2" drain opening
 - Supplied with installation clip, template and strainer
 - CUPC certified

Available accessories

- BG1614 - Stainless Steel Grid
- Colander Strainer - Stainless Steel
- Drying Rack



MAIN LOCATION

BRISTOL SINKS
56 Firestone Blvd
London, Ontario
N5W 6E6

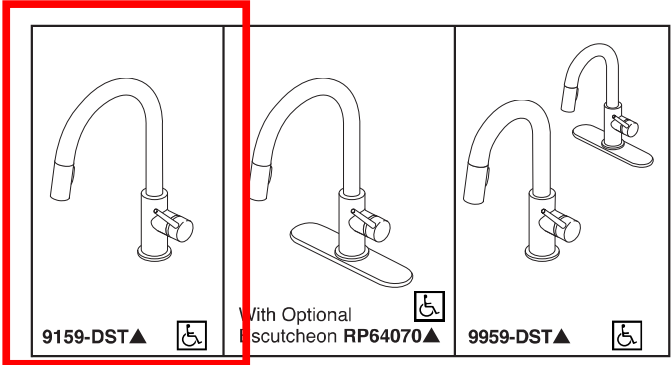
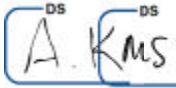
WESTERN LOCATION

BRISTOL SINKS
964 72nd Avenue NE
Calgary, Alberta
T2E 8V9

CONTACT

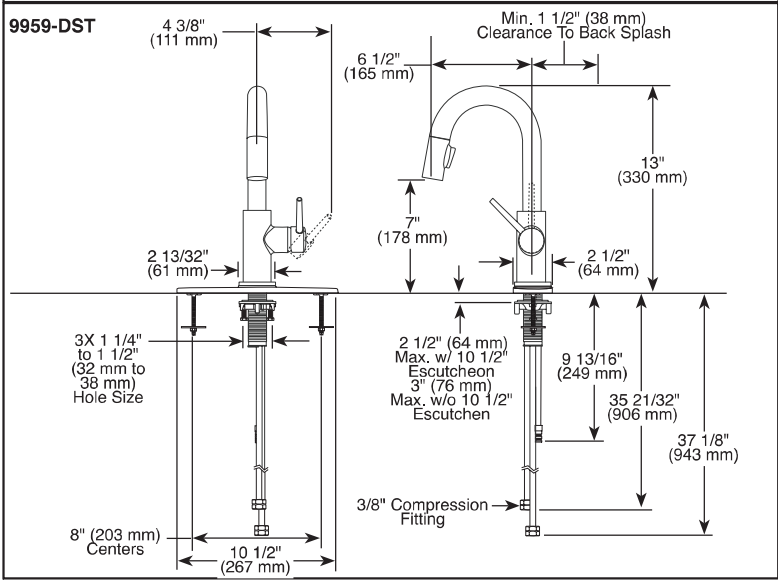
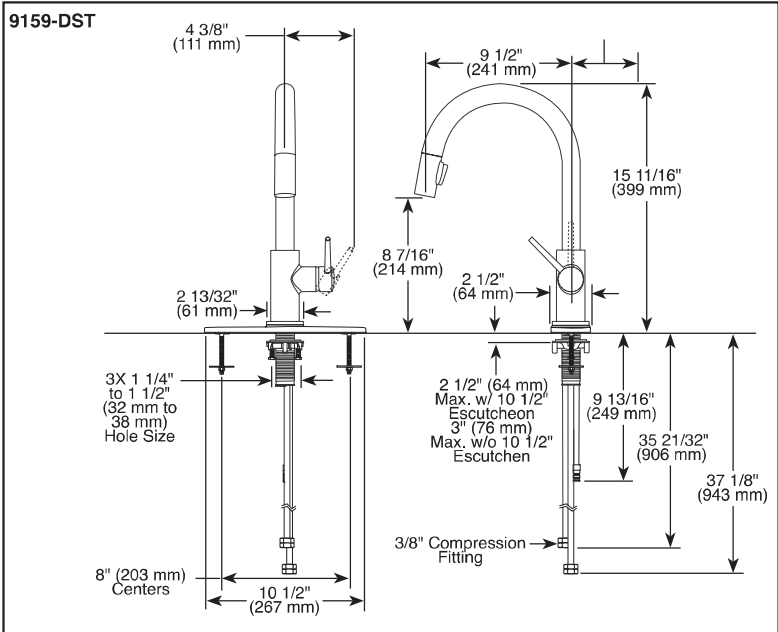
Tel: 1 (800) 930-0214
Fax: 1 (866) 310-7580
Email: sales@bristolsinks.com

DV3 LOT 94 - BASEMENT BAR AND LAUNDRY ROOM 9959-BL-DST



Submitted Model No.:

Specific Features:



▲ Designate proper finish suffix

Delta reserves the right (1) to make changes in specifications and materials, and (2) to change or discontinue models, both without notice or obligation. Dimensions are for reference only. See current full-line price book or www.deltafaucet.com for finish options and product availability.

DSP-K-9159-DST Rev. E

DELTA
KITCHEN
FAUCETS

- Trinsic® Collection
- Single Handle Deck Mount
- 2-Function Pull-Down Sprayer
- Single or 3 Hole Sink Applications
- Centermount or 8" (203 mm) Centers w/ Optional 10 1/2" (267 mm) Escutcheon
- MagnaTite® Magnetic Docking

STANDARD SPECIFICATIONS:

- Single handle, 2-function pull-down kitchen faucets for exposed mounting on single or three hole sinks.
- Solid brass fabricated body.
- 15 11/16" (399 mm) high, 9 1/2" (241 mm) long, spout swings 360°.
- Lever handle. Control mechanism shall be full-motion valve cartridge.
- Touch-Clean® sprayhead.
- Quick connect hoses.
- Pull-down wand operates in an aerated or spray mode via ergonomic buttons.
- Red/blue indicator on handle button to indicate hot/cold temperature.
- MagnaTite® magnetic docking.
- Dual integral check valves in sprayer.
- Mounting wrench to assist in tightening mounting nut securely.
- Hose travels inside mounting shank so it will not interfere with deck edges.
- Keyed 10 1/2" (267 mm) escutcheon to help alignment and aid installation.
- Maximum 1.80 gpm @ 60 psi, 6.8 L/min @ 414 kPa

WARRANTY

- Lifetime limited warranty on parts (other than electronic parts and batteries) and finishes: or, for commercial users, for 5 years from date of purchase.
- 5 year limited warranty on electronic parts (other than batteries); or, for commercial users, for 1 year from the date of purchase. No warranty is provided on batteries.

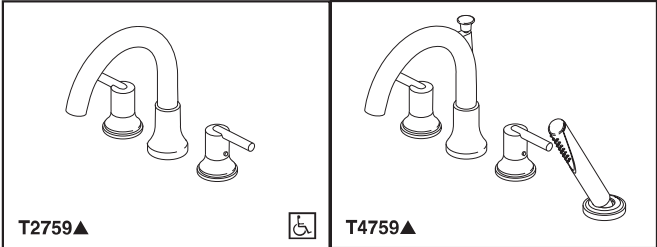
COMPLIES WITH:

- ASME A112.18.1 / CSA B125.1
- ASME A112.18.6
- Indicates compliance to ICC/ANSI A117.1
- Verified compliant with .25% weighted average Pb content regulations.



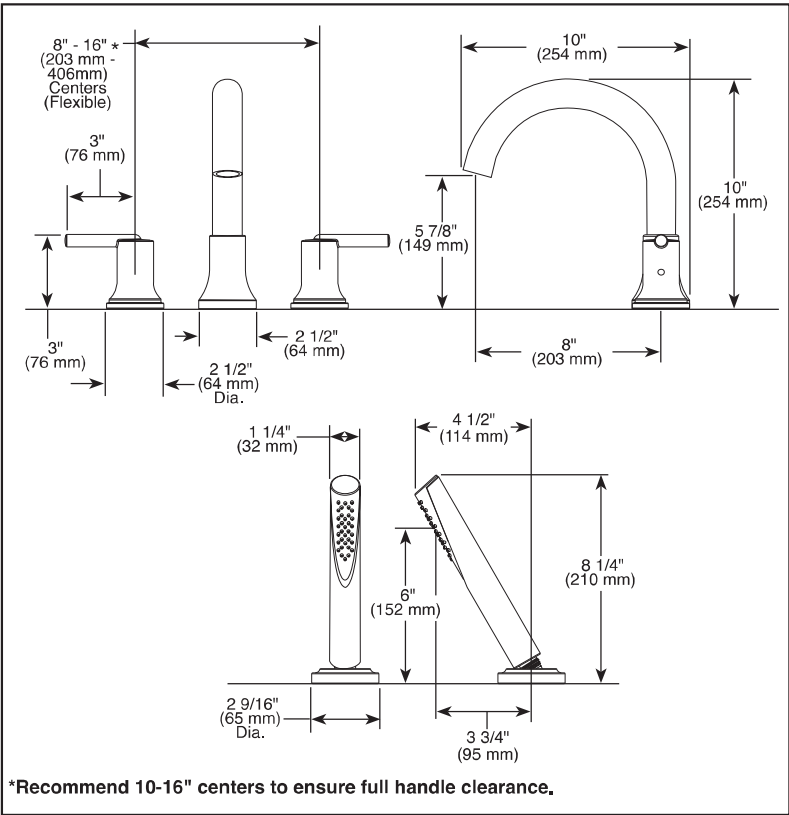
55 E 111th Street, Indianapolis, Indiana 46280
350 South Edgeware Road, St. Thomas, ON N5P 4L1
© 2015 Masco Corporation of Indiana

DV3 LOT 94 - PRIMARY ENSUITE FREE STANDING TUB T4759-BL



Submitted Model No.: _____

Specific Features: _____



▲ Designate Proper Finish Suffix



see what Delta can do™

ROMAN
TUB/WHIRLPOOL
FAUCET TRIM

- Trinsic® Collection
- Three Hole Installation (T2759 Series)
- Four Hole Installation (T4759 Series)

STANDARD SPECIFICATIONS:


- Handshower flow rate of 1.75 gpm @ 80 psi, 6.6 L/min @ 550 kPa
- Trim only for two handle Roman Tub faucet for concealed mounting
- Temperature and volume controlled with handles
- Red/blue indicator markings
- Rough-In kit must also be ordered to complete installation
 - R4707 for four hole
 - R2700 or R2707 for three hole
 - RP23601 for three hole 10" fixed installationThere are separate specification sheets on each rough-in kit if more details are required
- Handshower includes double check valves for backflow prevention (T4759)

WARRANTY

- Lifetime limited warranty on parts (other than electronic parts and batteries) and finishes; or, for commercial users, for 5 years from date of purchase.
- 5 year limited warranty on electronic parts (other than batteries); or, for commercial users, for 1 year from the date of purchase. No warranty is provided on batteries.



COMPLETE VALVE COMPLIES WITH:

- ASME A112.18.1 / CSA B125.1
-  Indicates compliance to ICC/ANSI A117.1 - Valve control only
- EPA WaterSense® - Applies to handshower only - RP73384*

Delta reserves the right (1) to make changes in specifications and materials, and (2) to change or discontinue models, both without notice or obligation. Dimensions are for reference only. See current full-line price book or www.deltafaucet.com for finish options and product availability.

DSP-B-T2759 Rev. E

Delta Faucet Company
55 E. 111th Street, Indianapolis, IN 46280
350 South Edgeware Road, St. Thomas, ON N5P 4L1
© 2017 Delta Faucet Company

DV3 LOT 94 - PRIMARY ENSUITE MAAX JAAZ

DS
A. KMS

Jazz F 66 x 36 Acrylic Freestanding Bathtub

Model number:	105359-055-001
---------------	----------------

Dimensions: 66" x 36" x 24" Installation: Freestanding Material: Acrylic



Standard Features:
• Deep soak bathing for ultimate relaxation
• 2-piece freestanding bathtub with concealed seam
• Comfortable backrest and ample deck space for faucet installation
• MAAX innovative leveling legs for easy installation
• Above-the-Floor Rough (AFR) and F² Drain compatible
• Center drain
Systems:
Aerofeel

Standard Colors:



White

Certifications

MAAX products adhere to one or more of the following certifications:



MAAX

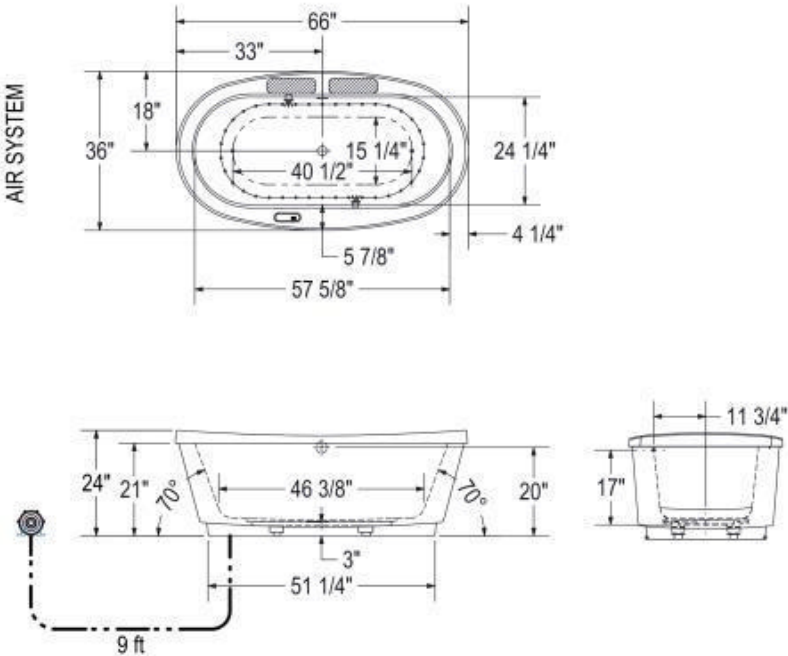
Jazz F 66 x 36 Acrylic Freestanding Bathtub

Model number:	105359-055-001		
---------------	----------------	--	--

Dimensions: 66" x 36" x 24"

Installation: Freestanding

Material: Acrylic



(●) : Indicates Aerofoel airjets positioning
(☼) : Indicates chromatherapy light positioning
(▨) : Recommended faucet area.2 sections of 12" (L) x 3 1/2" (W).

Blower must be installed at a distance.

All dimensions are approximate. Structure measurements must be verified against the unit to ensure proper fit.

Dimensions
66 x 36 x 24 In. (1676 x 914 x 610 mm)
Water Capacity
76 gallons - 286 liters
Weight
149 lbs - 67 1/2 kg
Bathing Well
57 3/4 In. x 24 1/4 In. (1464 mm x 616 mm)
Deep Sump Height
19.25 In. - 489 mm
Deck Width
5.875 In. - 149 mm
Drain location:
Center

Project:

Contractor:

Representative:

Date:

Tel:

Notes:

MAAX

DV3 LOT 94 - KITCHEN FAUCET 940LF-BL

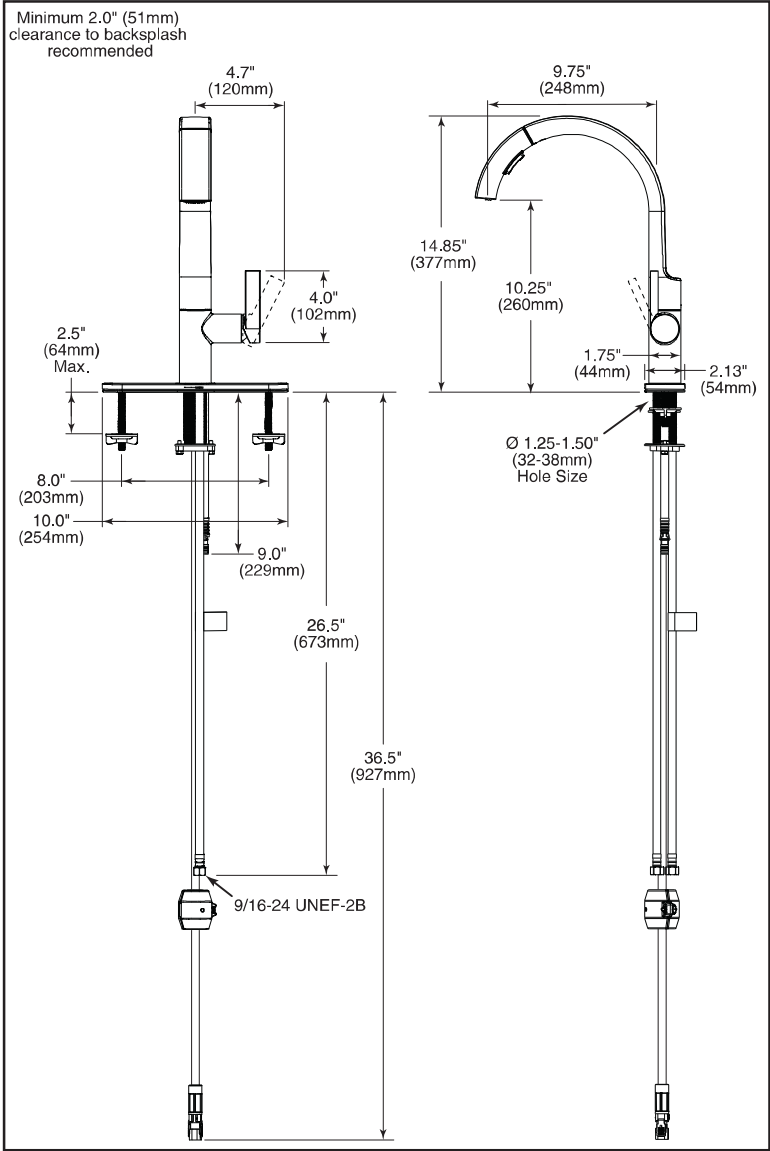
DS
A. Kms



KITCHEN FAUCETS

- ☐ Keele™ Pull-Down Kitchen Faucet
- ☐ Single Handle Deck Mount
- ☐ MagnaTite® Magnetic Docking

SUBMITTED MODEL NO.: _____
SPECIFIC FEATURES: _____



STANDARD SPECIFICATIONS:

- Single handle kitchen faucet
- One or three hole mount (RP63209 Escutcheon optional, not included)
- 8" centres with optional 10" long escutcheon (ordered separately)
- 14.85" (377 mm) high, 9.75" (248 mm) spout length, swings 360°
- Pull-down spout operates in an aerated or spray mode via an easy push toggle button
- MagnaTite® magnetic docking
- Touch-Clean® spray head
- Quick Snap® hose installation
- Dual integral check valves
- Spout is connected to valve body with a 59" (150 cm) long hose
- Ceramic cartridge
- Standard with 3/8" compression
- Maximum flow rate 1.8 gpm @ 60 PSI, 6.8 L/min @ 414 kPa
- Maximum flow rate 1.50 gpm @ 60 psi, 5.7 L/min @ 414 kPa

COMPLIES WITH:

- ASME A112.18.1 / CSA B125.1
- Verified compliant with 0.25% weighted average Pb content regulations
- Indicates compliance to ICC/ANSI A117.1

WARRANTY

- Parts and Finish - Lifetime limited warranty; or for commercial purchasers, 10 years for multi-family residential (apartments and condominiums) and 5 years for all other commercial uses, in each case from the date of purchase.
- Electronic Parts and Batteries (if applicable) - 5 years from the date of purchase; or for commercial purchasers, 1 year from the date of purchase. No warranty is provided on batteries.

▲ Designate Proper Finish Suffix

Delta Faucet reserves the right (1) to make changes in specifications and materials, and (2) to change or discontinue models, both without notice or obligation. Dimensions are for reference only. See current full-line price book or www.deltafaucet.com for finish options and product availability.

Delta Faucet Company
350 South Edgeware Road, St. Thomas, ON N5P 4L1
55 E. 111th Street, Indianapolis, IN 46280
© 2023 Delta Faucet Company

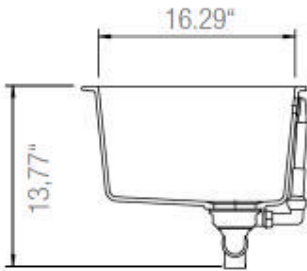
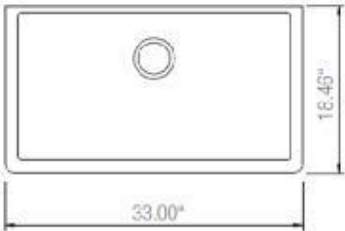
DSP-K-940LF, Rev. A

DV3 LOT 94 - KITCHEN SINK B317

DS
A. KMS

Product Specification Sheet

Virtuo Granite Undermount Single Sink
B317 - B318 - B319 - B329 - B336



Colour Finish	Model No.
Pearl Back	B317
Coffee Brown	B318
Slate Grey	B319
Asphalt	B329
Stone Taupe	B336

- Description**
- 33" x 18-1/2" x 9-1/4" Deep
 - 80% Quartz Content
 - 3 1/2" drain opening
 - Supplied with installation clips, template & strainers
 - CUPC certified

- Available accessories**
- Matching Strainer
 - Drying Rack
 - BG317/318/319/329/336 - Stainless Steel Grid



MAIN LOCATION

BRISTOL SINKS
56 Firestone Blvd
London, Ontario
N5W 6E6

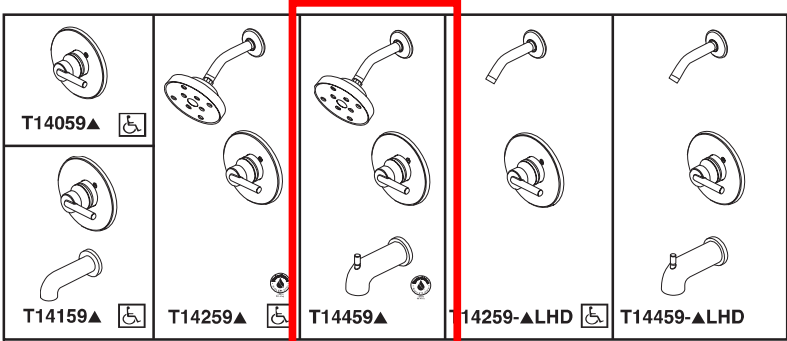
WESTERN LOCATION

BRISTOL SINKS
964 72nd Avenue NE
Calgary, Alberta
T2E 8V9

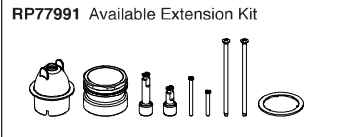
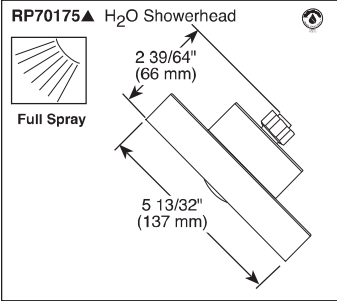
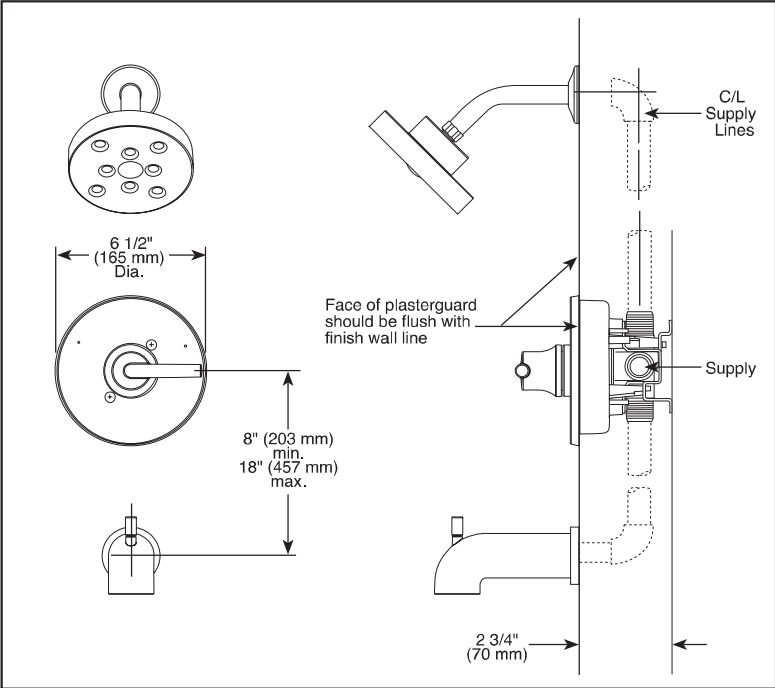
CONTACT

Tel: 1 (800) 930-0214
Fax: 1 (866) 310-7580
Email: sales@bristolsinks.com

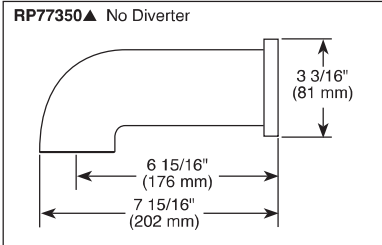
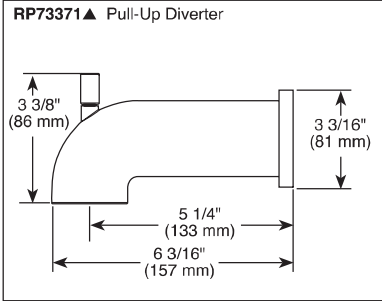
DV3 LOT 94 - MAIN BATHROOM AND BASEMENT BATHROOM T14459-BL



Submitted Model No.: _____
Specific Features: _____



▲ Designate Proper Finish Suffix



Delta reserves the right (1) to make changes in specifications and materials, and (2) to change or discontinue models, both without notice or obligation. Dimensions are for reference only. See current full-line price book or www.deltafaucet.com for finish options and product availability.

DSP-B-T14059 Rev. K



see what Delta can do™

TUB AND SHOWER FAUCET TRIM

- Trinsic® Bath Collection
- Valve Only (T14059)
- Tub Only (T14159)
- Shower Only (T14259)
- Tub/Shower (T14459)

FEATURES:

- Monitor® 14 Series pressure balanced single handle bath mixing valve trim
- Single function H₂Okinetic® Technology showerhead

STANDARD SPECIFICATIONS:

- Maintains a balanced pressure of hot and cold water even when a valve is turned on or off elsewhere in the system
- For use with MultiChoice® Universal rough valve body (R10000 Series)
- Temperature only controlled with handle
- Field adjustable means to limit handle rotation into hot water zone
- 120° maximum handle rotation
- Maximum 1.75 gpm @ 80 psi, 6.6 L/min @ 550 kPa
- Red/blue pad print temperature indicators on escutcheon
- "LHD" models indicate less showerhead
- 1/2" CWT slip-on spout adapter
- Stem extension kit RP77991 can be ordered to allow for an additional 1 3/4" wall thickness. RP77991 ships with chrome escutcheon screws. For special finishes also order RP12630 escutcheon screws in desired finish.

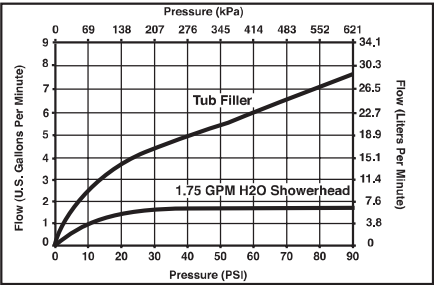
WARRANTY

- Lifetime limited warranty on parts (other than electronic parts and batteries) and finishes: or, for commercial users, for 5 years from date of purchase.
- 5 year limited warranty on electronic parts (other than batteries); or, for commercial users, for 1 year from the date of purchase. No warranty is provided on batteries.



COMPLIES WITH:

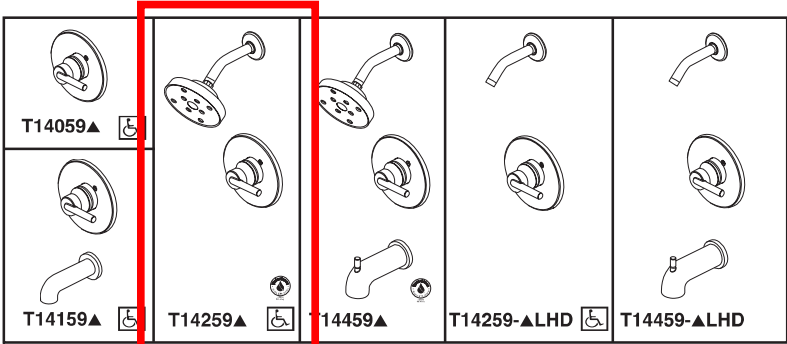
- ASME A112.18.1 / CSA B125.1
- ASSE 1016
- Indicates compliance to ICC/ANSI A117.1 - Valve control only
- EPA WaterSense®



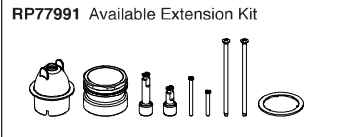
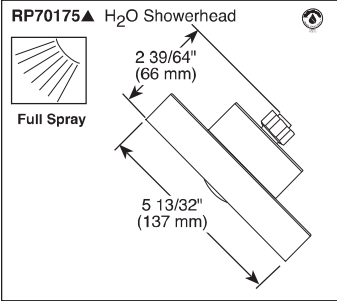
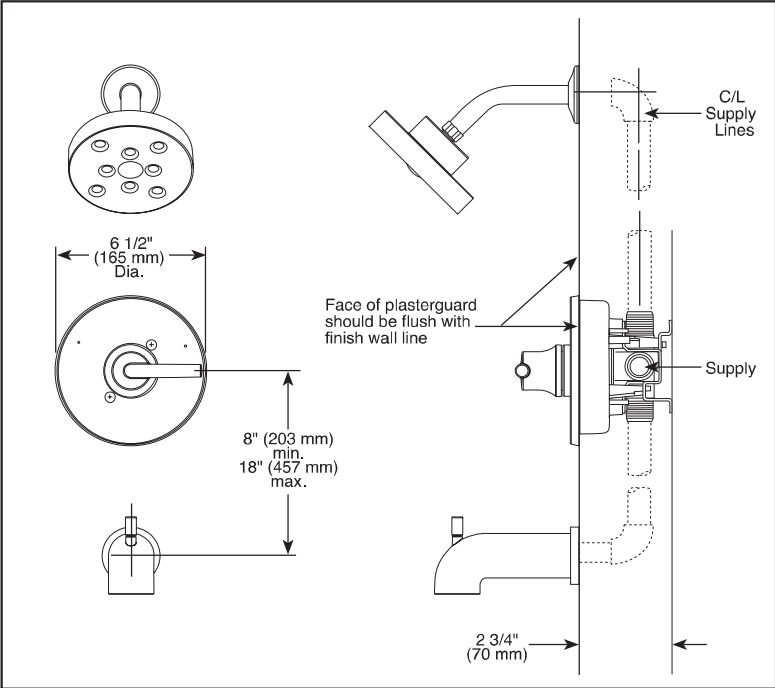
Delta Faucet Company
55 E. 111th Street, Indianapolis, IN 46280
350 South Edgeware Road, St. Thomas, ON N5P 4L1
© 2017 Delta Faucet Company

DV3 LOT 94 - PRIMARY ENSUITE AND ENSUITE #2 T14259-BL

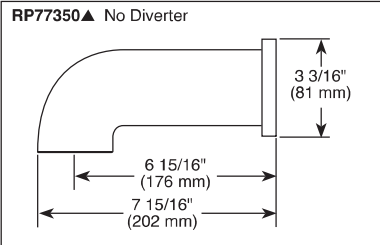
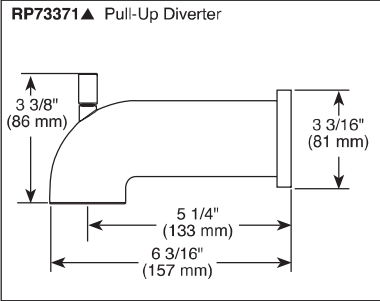
DS
A. Kms



Submitted Model No.: _____
Specific Features: _____



▲ Designate Proper Finish Suffix



Delta reserves the right (1) to make changes in specifications and materials, and (2) to change or discontinue models, both without notice or obligation. Dimensions are for reference only. See current full-line price book or www.deltafaucet.com for finish options and product availability.

DSP-B-T14059 Rev. K



see what Delta can do™

TUB AND SHOWER FAUCET TRIM

- Trinsic® Bath Collection
- Valve Only (T14059)
- Tub Only (T14159)
- Shower Only (T14259)
- Tub/Shower (T14459)

FEATURES:

- Monitor® 14 Series pressure balanced single handle bath mixing valve trim
- Single function H₂Okinetic® Technology showerhead

STANDARD SPECIFICATIONS:

- Maintains a balanced pressure of hot and cold water even when a valve is turned on or off elsewhere in the system
- For use with MultiChoice® Universal rough valve body (R10000 Series)
- Temperature only controlled with handle
- Field adjustable means to limit handle rotation into hot water zone
- 120° maximum handle rotation
- Maximum 1.75 gpm @ 80 psi, 6.6 L/min @ 550 kPa
- Red/blue pad print temperature indicators on escutcheon
- "LHD" models indicate less showerhead
- 1/2" CWT slip-on spout adapter
- Stem extension kit RP77991 can be ordered to allow for an additional 1 3/4" wall thickness. RP77991 ships with chrome escutcheon screws. For special finishes also order RP12630 escutcheon screws in desired finish.

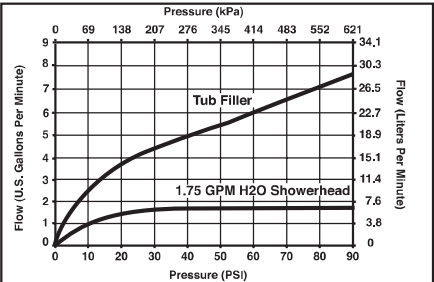
WARRANTY

- Lifetime limited warranty on parts (other than electronic parts and batteries) and finishes; or, for commercial users, for 5 years from date of purchase.
- 5 year limited warranty on electronic parts (other than batteries); or, for commercial users, for 1 year from the date of purchase. No warranty is provided on batteries.



COMPLIES WITH:

- ASME A112.18.1 / CSA B125.1
- ASSE 1016
- Indicates compliance to ICC/ANSI A117.1 - Valve control only
- EPA WaterSense®



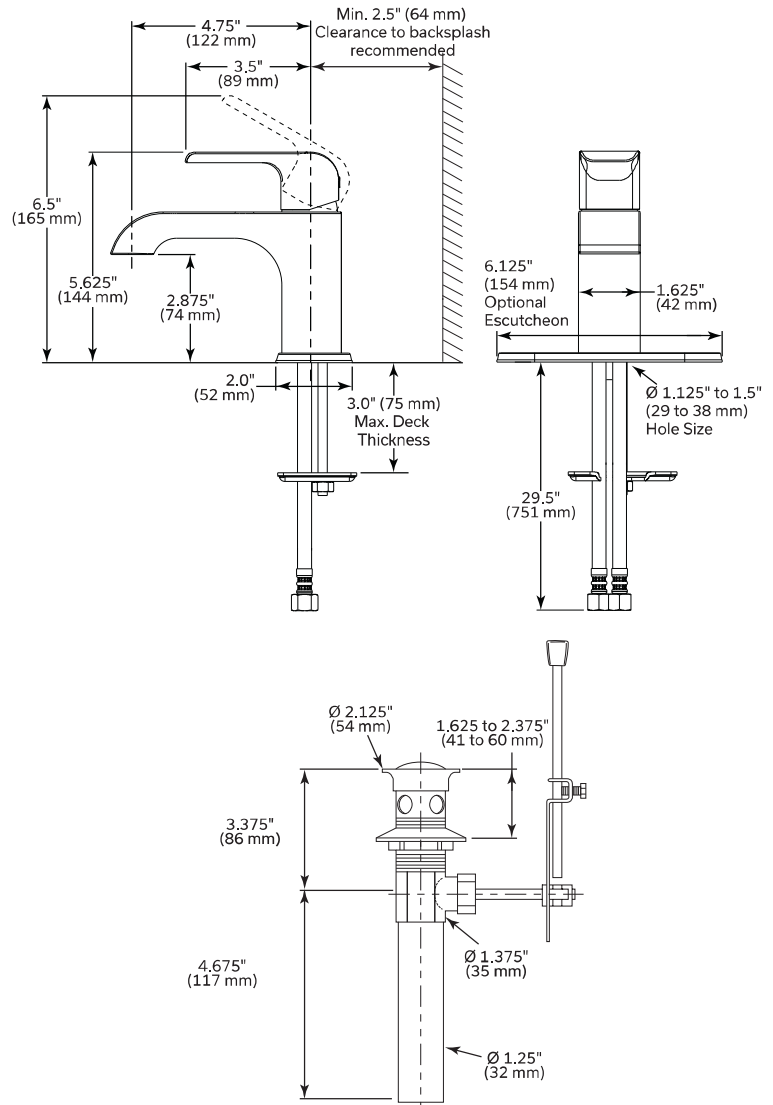
Delta Faucet Company
55 E. 111th Street, Indianapolis, IN 46280
350 South Edgeware Road, St. Thomas, ON N5P 4L1
© 2017 Delta Faucet Company

DV3 LOT 94 - MAIN BATHROOM, BASEMENT BATHROOM, ENSUITE #2 AND POWDER ROOM 563LF-BL

DS
A. Kms



SUBMITTED MODEL NO.:
SPECIFIC FEATURES:



LAVATORY FAUCETS

- ☐ Kitano™ Collection
- ☐ Single Handle Deck Mount

- STANDARD SPECIFICATIONS:**
- Max flow rate 1.2 gpm (4.5 L/min) (Aerated pressure compensating)
 - Standard single hole mount or three hole mount with optional - 6.125" (154 mm) Escutcheon (sold seperately)
 - Poly-braided supply lines
 - 3.0" (75 mm) max. deck thickness
 - Ceramic cartridge
 - Hot-Cold indicator
 - Metal lever handle
 - Solid brass body
 - 29.5" (751 mm) long flexible supply lines with 9/16" supply fittings
 - Rigid Spout
 - Models have 50/50 drain with pop-up type fitting with plated flange and stopper
 - "-LPU" models are supplied less the 50/50 drain with pop-up type fitting with plated flange and stopper

- OPTIONAL ACCESSORIES (sold seperately)**
- RP100784▲ - 6-1/8" (154 mm) escutcheon
 - 33W576▲ - push pop-up with overflow holes



- COMPLIES WITH**
- ASME A112.18.1 / CSA B125.1
 - EPA WaterSense®
 - Verified compliant with 0.25% weighted average Pb content regulations
 - Indicates compliance to ICC/ANSI A117.1

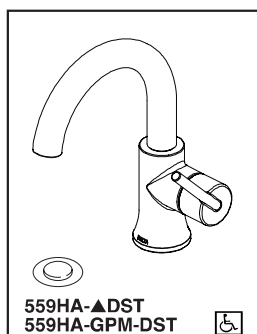
▲ Designate Proper Finish Suffix
WaterSense® is a registered trademark of the U.S. Environmental Protection Agency
NOTICE Dimensions are for reference only. Measurements may vary ± 0.25" (6 mm)

Delta Faucet Company reserves the right (1) to make changes in specifications and materials, and (2) to change or discontinue models, both without notice or obligation. See current full-line price book or www.deltafaucet.ca for finish options and product availability.

Delta Faucet Company
350 South Edgeware Road, St. Thomas, ON N5P 4L1
55 E. 111th Street, Indianapolis, IN 46280
© 2021 Delta Faucet Company

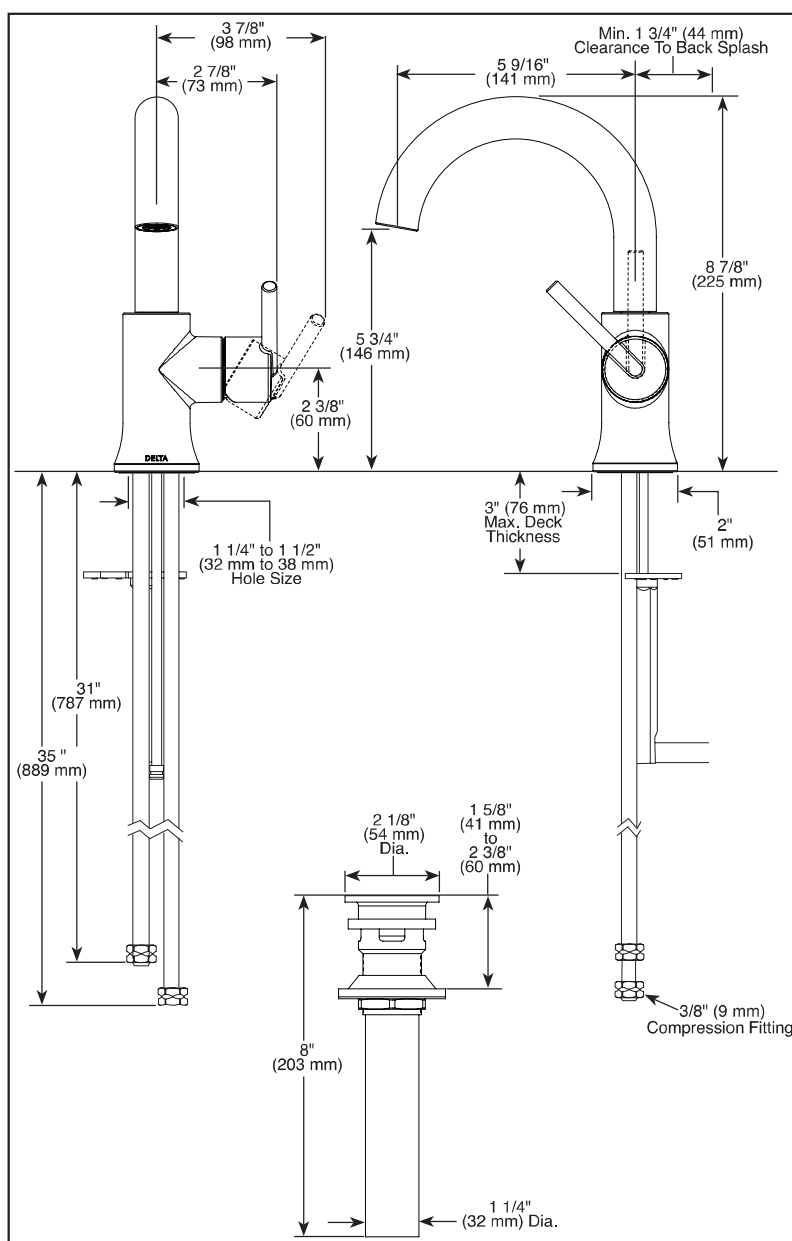
DSP-L-563LF, Rev. B

DV3 LOT 94 - PRIMARY ENSUITE 559HA-BL-DST



Submitted Model No.:

Specific Features:



▲ Designate Proper Finish Suffix

Delta reserves the right (1) to make changes in specifications and materials, and (2) to change or discontinue models, both without notice or obligation. Dimensions are for reference only. See current full-line price book or www.deltafaucet.com for finish options and product availability.

DSP-L-559HA-DST Rev. C



LAVATORY FAUCETS

- Trinsic® Collection
■ High Arc Swivel Spout

FEATURES:

- Euro-Motion Diamond™ Valve


STANDARD SPECIFICATIONS:

- Max. 1.20 gpm @ 60 psi, 4.54 L/min @ 414 kPa (559HA-DST)
- Max. 1.00 gpm @ 60 psi, 3.80 L/min @ 414 kPa (559HA-GPM-DST)
- Single hole mount
- Spout swivels 360°
- Solid metal construction
- Diamond coated ceramic cartridge
- Red/blue indicator markings
- Models include metal push-pop drain

WARRANTY

- Lifetime limited warranty on parts (other than electronic parts and batteries) and finishes: or, for commercial users, for 5 years from date of purchase.
- 5 year limited warranty on electronic parts (other than batteries); or, for commercial users, for 1 year from the date of purchase. No warranty is provided on batteries.

**COMPLIES WITH:**

- ASME A112.18.1 / CSA B125.1
- ASME A112.18.2 / CSA B125.2
-  Indicates compliance to
ICC/ANSI A117.1
- EPA WaterSense®
- Verified compliant with .25% weighted average
Pb content regulations.



55 E. 111th Street, Indianapolis, Indiana 46280
350 South Edgeware Road, St. Thomas, ON N5P 4L1
© 2016 Masco Corporation of Indiana