

WTR4 LOT 143 - MAIN TUB/SHOWER FAUCET
- KITANO T14463 CHROME



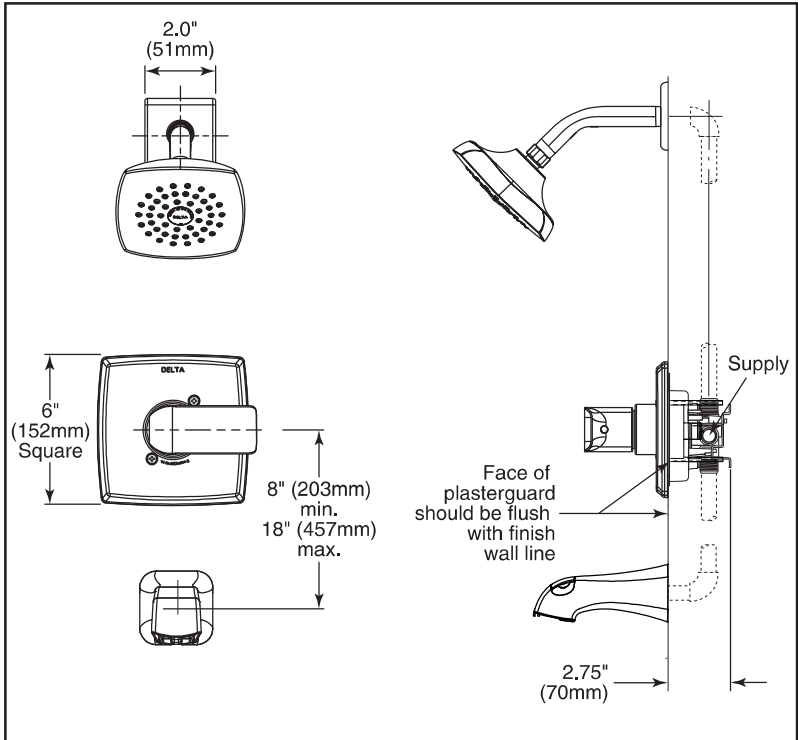
see what Delta can do™

TUB AND SHOWER
FAUCET TRIM

- Kitano™ Bath Collection
- Valve Only (T14063)
- Shower Only (T14263)
- Tub/Shower (T14463 & T14463-LHD)

Submitted Model No.: _____

Specific Features: _____



RP101971▲
(Touch-Clean® Raincan Shower Head)

Full Spray 2.7" (68mm)
5.25" (133mm)

RP78735▲
Pull-Up Diverter

2.8" (71 mm)
5.5" (140mm)

STANDARD SPECIFICATIONS:

- Monitor® 14 Series pressure balanced bath single handle mixing valve trim
- Maintains a balanced pressure of hot and cold water even when a valve is turned on or off elsewhere in the system
- For use with MultiChoice® Universal rough valve body (R10000 Series)
- Back-to-back installation capability
- Solid brass forged body
- Temperature only controlled with handle
- Red/blue temperature indicators
- Field adjustable to limit handle rotation into hot water zone
- 120° maximum handle rotation
- All parts replaceable from the front of the valve
- "LHD" models indicate less showerhead
- Maximum 2.0 gpm @ 80 psi (7.6 L/min @ 550 kPa)

WARRANTY

- Parts and Finish - Lifetime limited warranty; or for commercial purchasers, 10 years for multi-family residential (apartments and condominiums) and 5 years for all other commercial uses, in each case from the date of purchase.
- Electronic Parts and Batteries (if applicable) - 5 years from the date of purchase; or for commercial purchasers, 1 year from the date of purchase. No warranty is provided on batteries.



Valve Only
Robinet
Seulement

COMPLIES WITH:

- ASME A112.18.1 / CSA B125.1
- ASSE 1016
- EPA WaterSense®
- Indicates compliance to ICC/ANSI A117.1



▲ Designate Proper Finish Suffix

Delta Faucet Company reserves the right (1) to make changes in specifications and materials, and (2) to change or discontinue models, both without notice or obligation. Dimensions are for reference only. See current full-line price book or www.deltafaucet.com for finish options and product availability.
DSP-B-T14063, REV. C

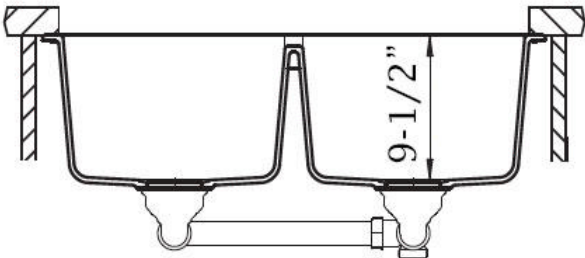
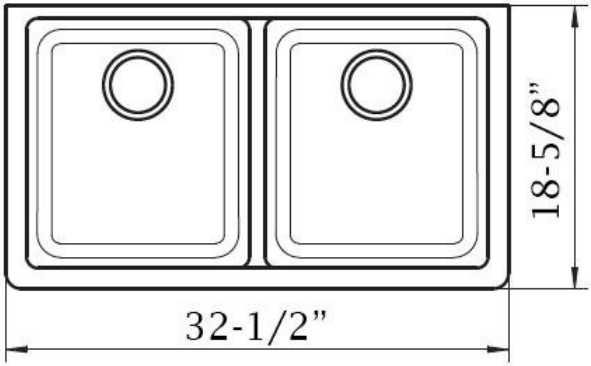
Delta Faucet Company
55 E. 111th Street, Indianapolis, IN 46280
350 South Edgeware Road, St. Thomas, ON N5P 4L1
© 2020 Delta Faucet Company

Product Specification Sheet

WIR4 LOI 143 - KITCHEN SINK -
B300 - SLATE GREY



Virtuo Granite Double Bowl Undermount
B300 - ~~B301~~ - ~~B302~~ - ~~B327~~ - ~~B334~~ - ~~B341~~



Colour Finish	Model No.
Slate Grey	B300
Pearl Back	B301
Coffee Brown	B302
Asphalt	B327
Stone Taupe	B334
White	B341

- Description
- Undermount granite double bowl sink
 - Outside Dimensions – 32 1/2" x 18 5/8" x 9 1/2" Deep
 - 80% Quartz Content & 20% Resin
 - 3 1/2" drain opening
 - Supplied with installation clips, template & strainers
 - Made in Germany
 - Scratch and heat resistant
 - cUPC certified
 - Minimum Cabinet Size: 34"

Available accessories

- Matching Strainer
- Drying Rack
- BG300/301/302/327/334/341 - Stainless Steel Grid



MAIN LOCATION

BRISTOL SINKS
56 Firestone Blvd
London, Ontario
N5W 6E6

WESTERN LOCATION

BRISTOL SINKS
964 72nd Avenue NE
Calgary, Alberta
T2E 8V9

CONTACT

Tel: 1(800) 930-0214
Fax: 1(866) 310-7580
Email: sales@bristolsinks.com

Kitano™ T143 - ENSUITE SHOWER FAUCET
KITANO T14263CHROME



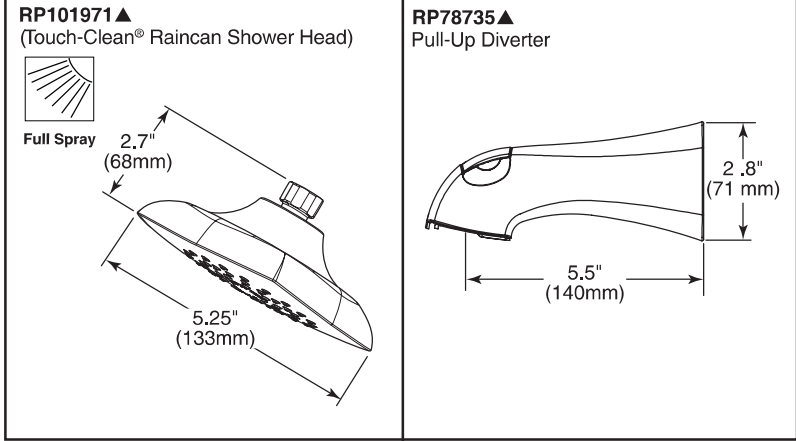
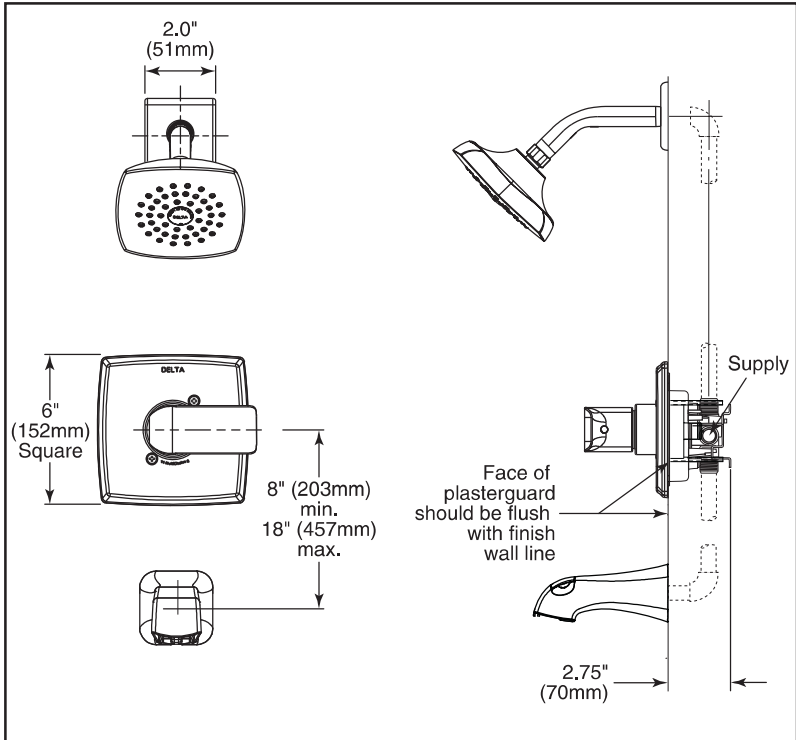
see what Delta can do™

TUB AND SHOWER
FAUCET TRIM

- Kitano™ Bath Collection
- Valve Only (T14063)
- Shower Only (T14263)
- Tub/Shower (T14463 & T14463-LHD)

Submitted Model No.: _____

Specific Features: _____



STANDARD SPECIFICATIONS:

- Monitor® 14 Series pressure balanced bath single handle mixing valve trim
- Maintains a balanced pressure of hot and cold water even when a valve is turned on or off elsewhere in the system
- For use with MultiChoice® Universal rough valve body (R10000 Series)
- Back-to-back installation capability
- Solid brass forged body
- Temperature only controlled with handle
- Red/blue temperature indicators
- Field adjustable to limit handle rotation into hot water zone
- 120° maximum handle rotation
- All parts replaceable from the front of the valve
- "LHD" models indicate less showerhead
- Maximum 2.0 gpm @ 80 psi (7.6 L/min @ 550 kPa)

WARRANTY

- Parts and Finish - Lifetime limited warranty; or for commercial purchasers, 10 years for multi-family residential (apartments and condominiums) and 5 years for all other commercial uses, in each case from the date of purchase.
- Electronic Parts and Batteries (if applicable) - 5 years from the date of purchase; or for commercial purchasers, 1 year from the date of purchase. No warranty is provided on batteries.



COMPLIES WITH:

- ASME A112.18.1 / CSA B125.1
- ASSE 1016
- EPA WaterSense®
- Indicates compliance to ICC/ANSI A117.1



▲ Designate Proper Finish Suffix

Delta Faucet Company reserves the right (1) to make changes in specifications and materials, and (2) to change or discontinue models, both without notice or obligation. Dimensions are for reference only. See current full-line price book or www.deltafaucet.com for finish options and product availability.
DSP-B-T14063, REV. C

Delta Faucet Company
55 E. 111th Street, Indianapolis, IN 46280
350 South Edgeware Road, St. Thomas, ON N5P 4L1
© 2020 Delta Faucet Company

LOT 143 - ENSUITE AND MAIN VANITY FAUCET
KITANO 563LF CHROME



LAVATORY FAUCETS

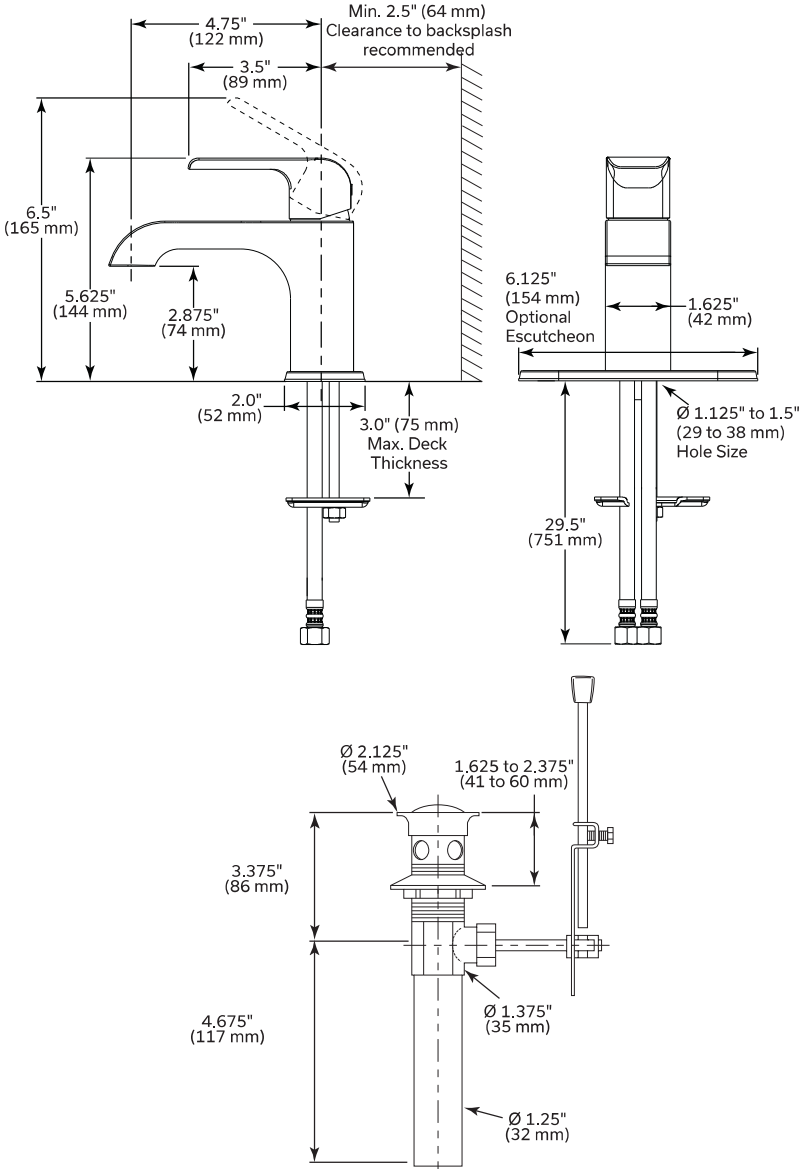
- ☐ Kitano™ Collection
- ☐ Single Handle Deck Mount

STANDARD SPECIFICATIONS:

- Max flow rate 1.2 gpm (4.5 L/min) *(Aerated pressure compensating)*
- Standard single hole mount or three hole mount with optional - 6.125" (154 mm) Escutcheon *(sold seperately)*
- Poly-braided supply lines
- 3.0" (75 mm) max. deck thickness
- Ceramic cartridge
- Hot-Cold indicator
- Metal lever handle
- Solid brass body
- 29.5" (751 mm) long flexible supply lines with 9/16" supply fittings
- Rigid Spout
- Models have 50/50 drain with pop-up type fitting with plated flange and stopper
- "-LPU" models are supplied less *the 50/50 drain with pop-up type fitting with plated flange and stopper*

OPTIONAL ACCESSORIES *(sold seperately)*

- RP100784▲ - 6-1/8" (154 mm) escutcheon
- 33W576▲ - push pop-up with overflow holes



COMPLIES WITH

- ASME A112.18.1 / CSA B125.1
- EPA WaterSense®
- Verified compliant with 0.25% weighted average Pb content regulations
- Indicates compliance to ICC/ANSI A117.1



▲ Designate Proper Finish Suffix

WaterSense® is a registered trademark of the U.S. Environmental Protection Agency
NOTICE Dimensions are for reference only. Measurements may vary ± 0.25" (6 mm)

Delta Faucet Company reserves the right (1) to make changes in specifications and materials, and (2) to change or discontinue models, both without notice or obligation. See current full-line price book or www.deltafaucet.ca for finish options and product availability.

Delta Faucet Company
350 South Edgeware Road, St. Thomas, ON N5P 4L1
55 E. 111th Street, Indianapolis, IN 46280
© 2021 Delta Faucet Company

DSP-L-563LF, Rev. B