

SPECTRUM KITCHENS OTTAWA

DCR PHOENIX HOMES
279 PATHWAYS PH2

MODEL - PLATINA

KITCHEN

MOUNTING HEIGHT - 96

LINE 3 - REGENCY ANTHRACITE MDF

HARDWARE - HU60

STANDARD WHITE INTERIOR

SOFT CLOSING DRAWERS

SOFT CLOSING DOORS

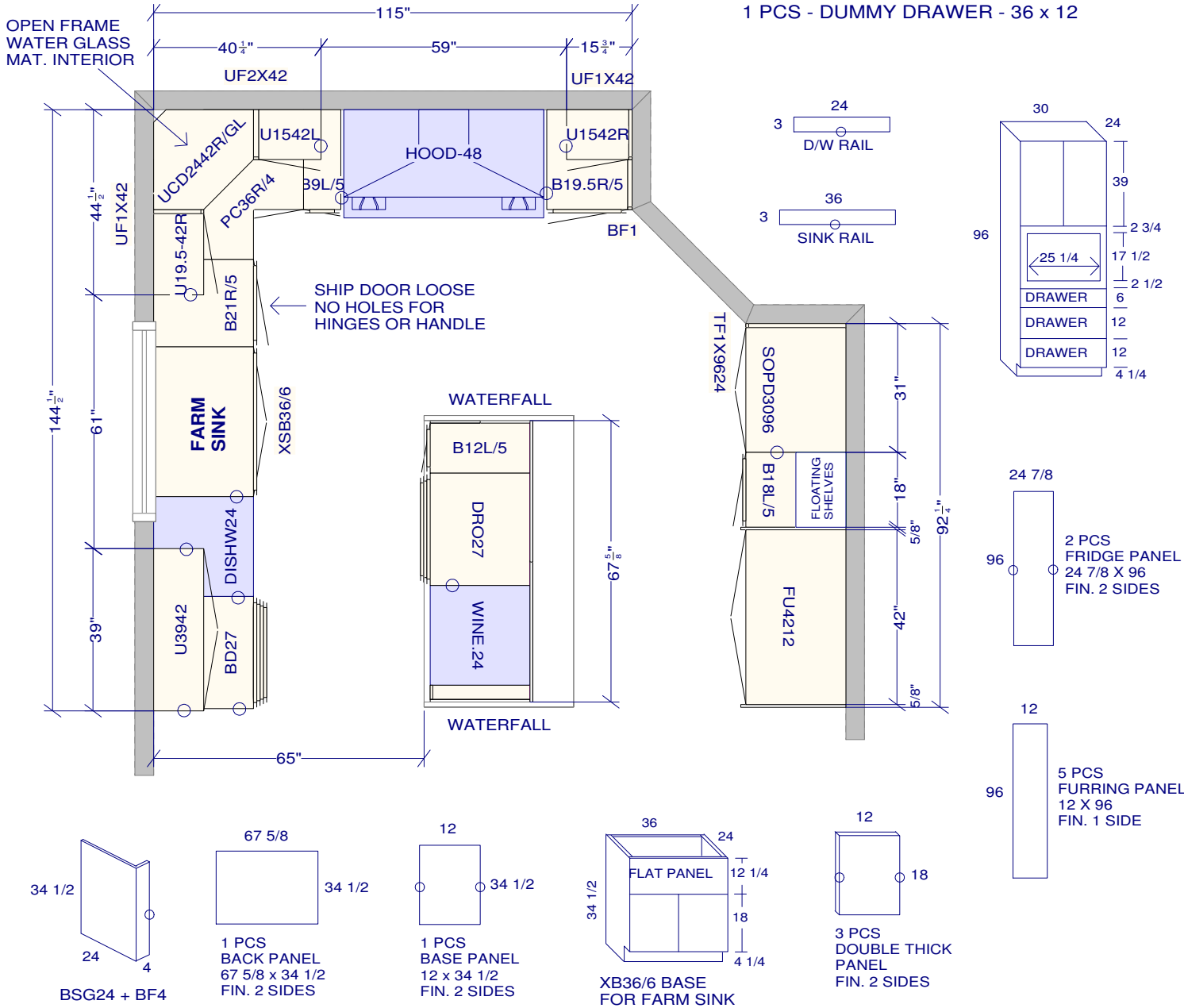
6 PCS - 5/8" KICK - FIN. BOTH ENDS

6 PCS - FLAT MOULDING

5 PCS - FLUSH KICK

5 PCS - CEILING CROWN

1 PCS - DUMMY DRAWER - 36 x 12



All dimensions and size designations given are subject to verification on job site and adjustment to fit job conditions.

This is an original design and must not be released or copied unless applicable fee has been paid or job order placed.

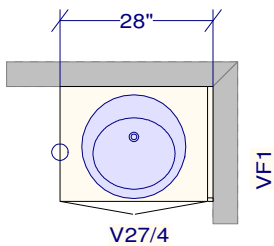
Designed: 2024-05-09
Printed: 2024-05-09

SPECTRUM KITCHENS OTTAWA

DCR PHOENIX HOMES
279 PATHWAYS PH2

MODEL - PLATINA

VANITIES



POWDER

LINE 3 - REGENCY ANTHRACITE MDF

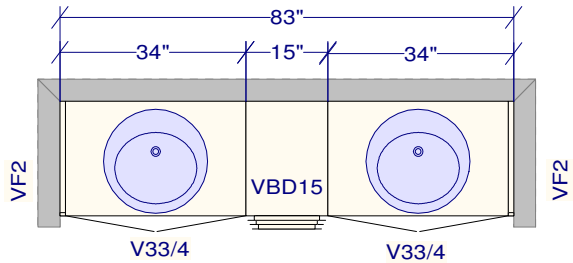
HARDWARE - HU60

STANDARD WHITE INTERIORS

METAL DRAWER BOX

1 PCS - 5/8" KICK - FIN. BOTH ENDS

1 PCS - FLAT MOULDING



MAIN BATH

LINE 3 - VENEZIA ANISE MAPLE

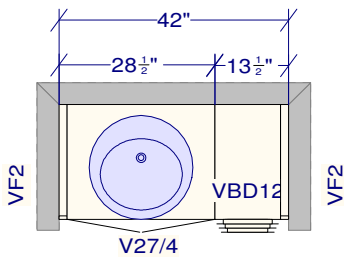
HARDWARE - D5

STANDARD WHITE INTERIORS

METAL DRAWER BOX

1 PCS - 5/8" KICK - FIN. BOTH ENDS

1 PCS - FLAT MOULDING



ENSUITE #2

LINE 3 - ODESSEY REVERE PEWTER

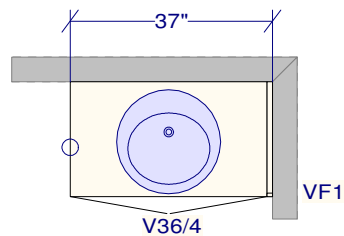
HARDWARE - KU61

STANDARD WHITE INTERIORS

METAL DRAWER BOX

1 PCS - 5/8" KICK - FIN. BOTH ENDS

1 PCS - FLAT MOULDING



BASEMENT

LINE 2 - POLO TRUFFLE MAPLE

HARDWARE - HU66

STANDARD WHITE INTERIORS

METAL DRAWER BOX

1 PCS - 5/8" KICK - FIN. BOTH ENDS

1 PCS - FLAT MOULDING

All dimensions ,size designations given are subject to verification on job site and adjustment to fit job conditions.

This is an original design and must not be released or copied unless applicable fee has been paid or job order placed.

Designed: 2024-05-09
Printed: 2024-05-09

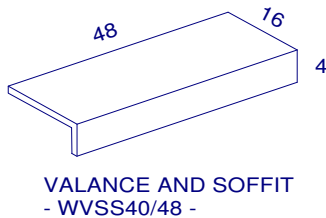
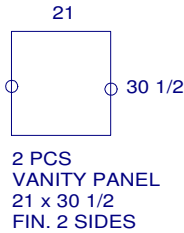
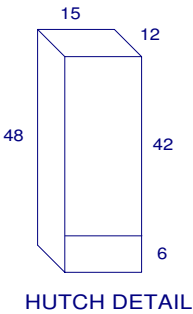
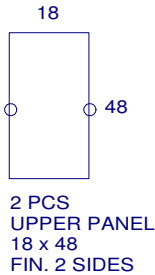
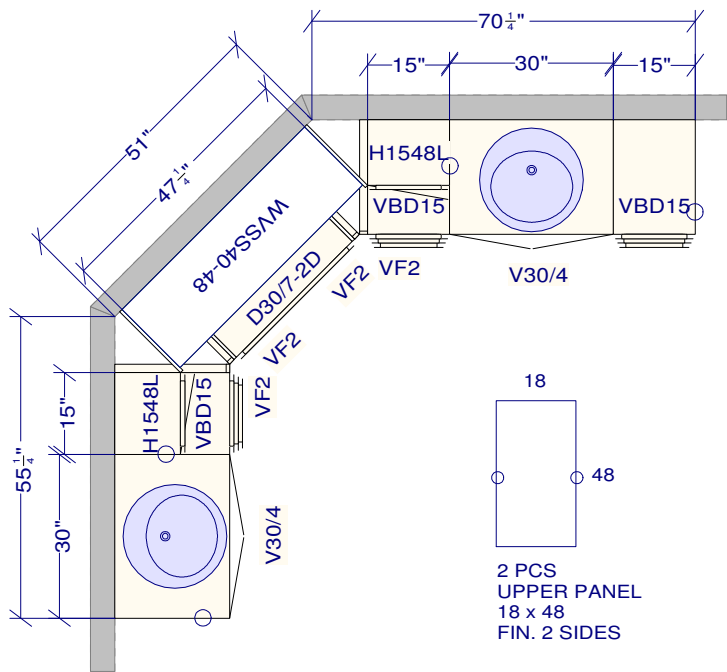
SPECTRUM KITCHENS OTTAWA

DCR PHOENIX HOMES
279 PATHWAYS PH2

MODEL - PLATINA

VANITIES PRIMARY ENSUITE

- MASTER ENSUITE
- LINE 3 - REGENCY CHALK WHITE MDF
- HARDWARE - KU60
- STANDARD WHITE INTERIORS
- METAL DRAWER BOX
- 2 PCS - 5/8" KICK - FIN. BOTH ENDS
- 3 PCS - FLAT MOULDING
- 2 PCS - LARGE VENEER CROWN



All dimensions ,size designations given are subject to verification on job site and adjustment to fit job conditions.

This is an original design and must not be released or copied unless applicable fee has been paid or job order placed.

Designed: 2024-04-29
Printed: 2024-05-09