

SPECTRUM KITCHENS OTTAWA

DCR PHOENIX HOMES  
276 PATHWAYS PH2

MODEL - ANNAPOLIS

KITCHEN

MOUNTING HEIGHT - 84

LINE 2 - MISSION WHITE SATIN

HARDWARE - HU64

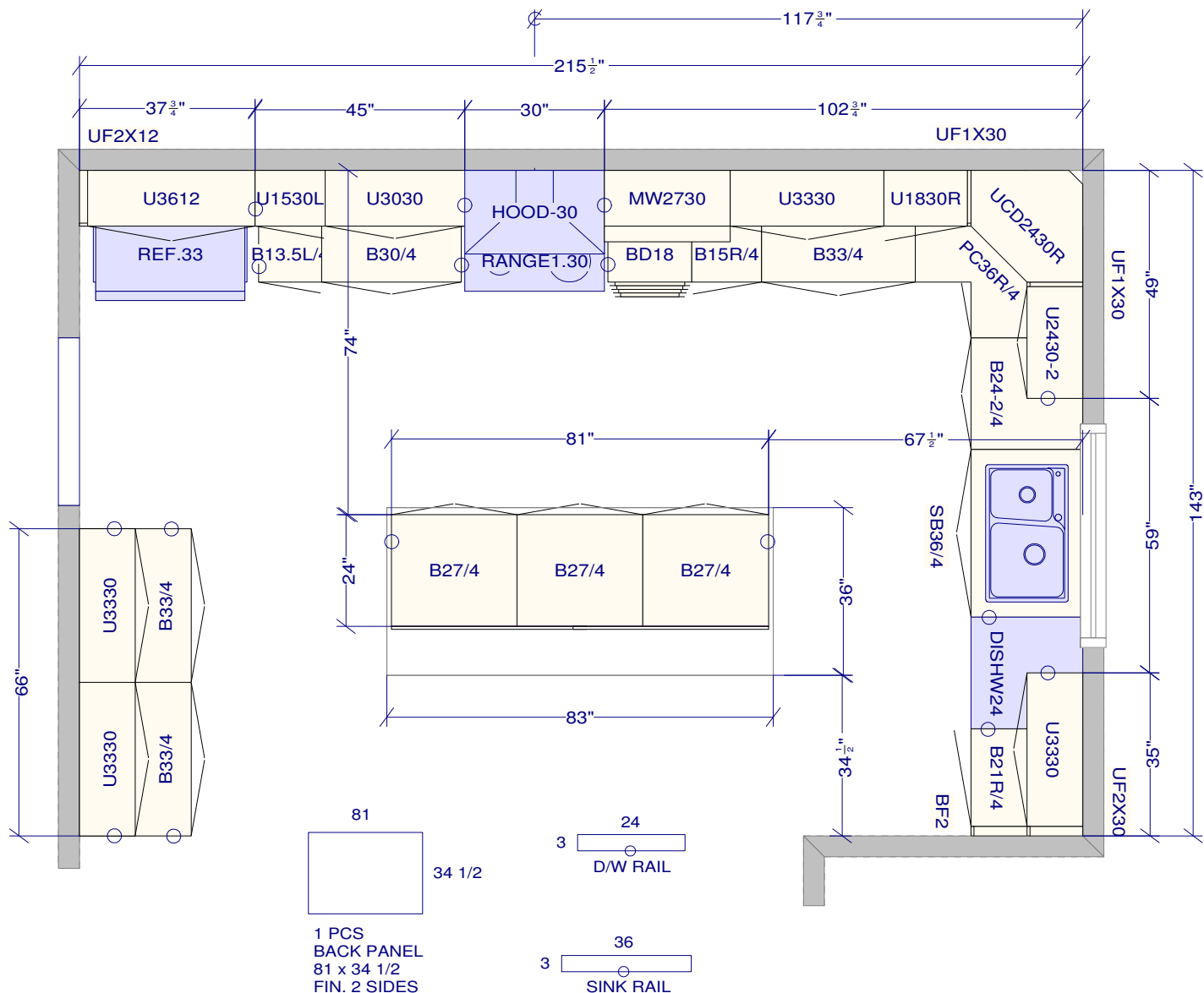
STANDARD WHITE INTERIOR

METAL DRAWER BOX

7 PCS - 5/8" KICK - FIN. BOTH ENDS

2 PCS - 90 DEG. CORNER MOULD

6 PCS - FLAT MOULDING



All dimensions \_size designations given are subject to verification on job site and adjustment to fit job conditions.



This is an original design and must not be released or copied unless applicable fee has been paid or job order placed.

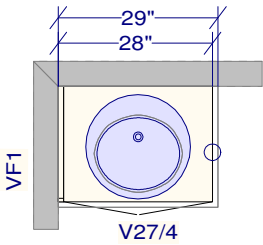
Designed: 2024-04-04  
Printed: 2024-04-17

SPECTRUM KITCHENS OTTAWA

DCR PHOENIX HOMES  
276 PATHWAYS PH2

MODEL - ANNAPOLIS

VANITIES



ENSUITE #3 (1ST FLOOR)

LINE 2 - MISSION BISCUIT

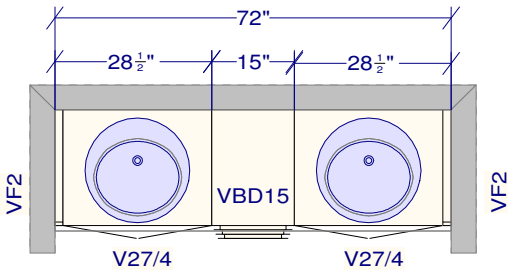
HARDWARE - HU64

STANDARD WHITE INTERIOR

METAL DRAWER BOX

1 PCS - 5/8" KICK - FIN. BOTH ENDS

1 PCS - FLAT MOULDING



MAIN (JACK AND JILL)

LINE 2 - MISSION BISCUIT

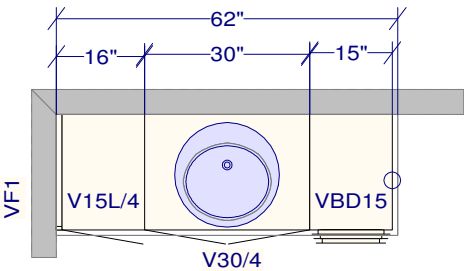
HARDWARE - HU64

STANDARD WHITE INTERIOR

METAL DRAWER BOX

1 PCS - 5/8" KICK - FIN. BOTH ENDS

1 PCS - FLAT MOULDING



ENSUITE #2

LINE 2 - MISSION BISCUIT

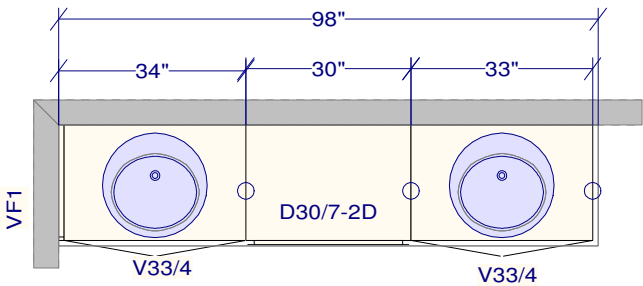
HARDWARE - HU64

STANDARD WHITE INTERIOR

METAL DRAWER BOX

1 PCS - 5/8" KICK - FIN. BOTH ENDS

1 PCS - FLAT MOULDING



MASTER ENSUITE

LINE 2 - MISSION WHITE SATIN

HARDWARE - HU64

STANDARD WHITE INTERIOR

METAL DRAWER BOX

1 PCS - 5/8" KICK - FIN. BOTH ENDS

2 PCS - FLAT MOULDING

All dimensions & size designations given are subject to verification on job site and adjustment to fit job conditions.



This is an original design and must not be released or copied unless applicable fee has been paid or job order placed.

Designed: 2024-04-04  
Printed: 2024-04-17