

SPECTRUM KITCHENS OTTAWA

DCR PHOENIX HOMES
91 DIAMONDVIEW PH3

MODEL - NEWINGTON

LIVING ROOM / MUD ROOM

MOUNTING HEIGHT - 96

LINE 2 - MISSION WHITE SATIN

HARDWARE - KU65

STANDARD WHITE INTERIOR

SOFT CLOSING DRAWERS

SOFT CLOSING DOORS

2 PCS - 5/8" KICK - FIN. BOTH ENDS

3 PCS - FLAT MOULDING

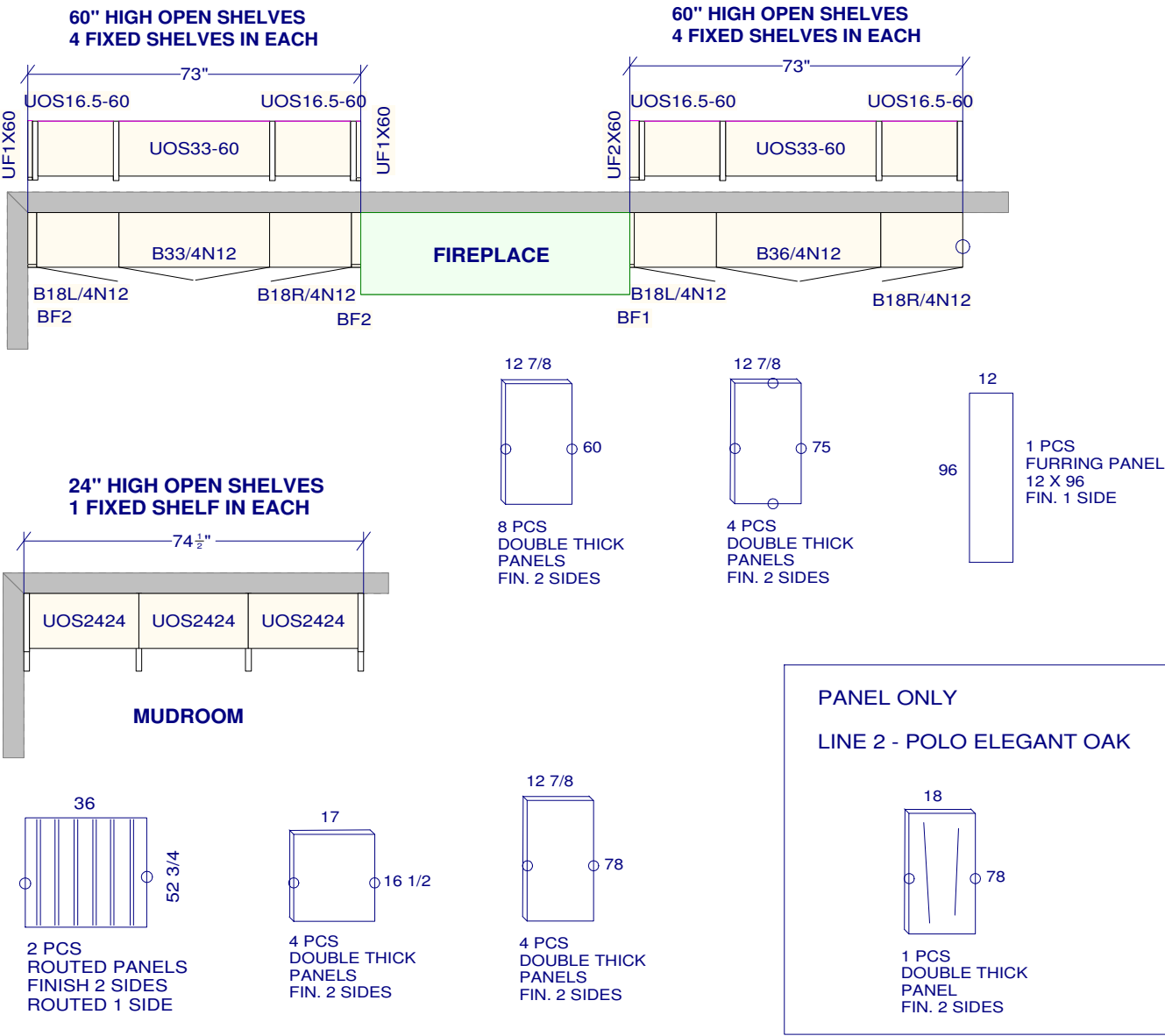
3 PCS - LARGE VENEER CROWN

1 PCS - CEILING CROWN

3 PCS - FLUSH KICK

AS - BUILT -

FEB 21-24



All dimensions ,size designations
given are subject to verification on
job site and adjustment to fit job
conditions.

This is an original design and must
not be released or copied unless
applicable fee has been paid or job
order placed.

Designed: 2024-03-01
Printed: 2024-03-01

SPECTRUM KITCHENS OTTAWA

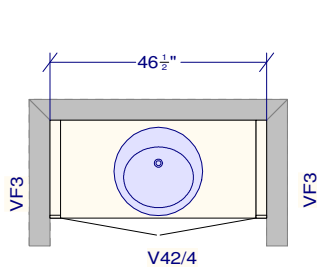
DCR PHOENIX HOMES
91 DIAMONDVIEW PH3

MODEL - NEWINGTON

VANITIES

AS - BUILT

FEB 21-24



POWDER

LINE 2 - MISSION WHITE SATIN

HARDWARE - HU130

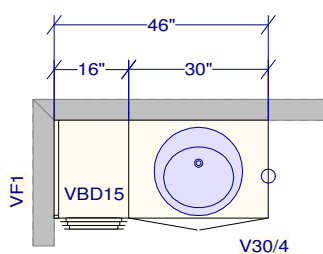
STANDARD WHITE INTERIOR

SOFT CLOSING DRAWERS

SOFT CLOSING DOORS

1 PCS - 5/8" KICK - FIN. BOTH ENDS

1 PCS - FLAT MOULDING



IN-LAW SUITE

LINE 3 - SOHO TAUPE OAK

HARDWARE - HU64

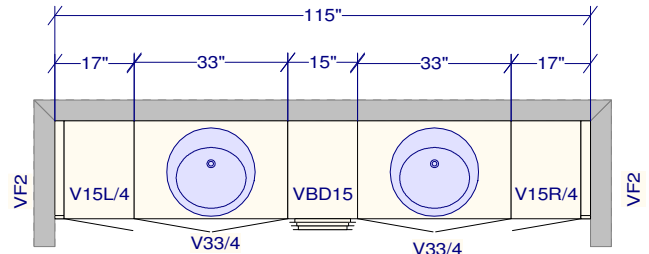
STANDARD WHITE INTERIOR

SOFT CLOSING DRAWERS

SOFT CLOSING DOORS

1 PCS - 5/8" KICK - FIN. BOTH ENDS

1 PCS - FLAT MOULDING



MAIN (JACK AND JILL)

LINE 2 - MISSION MATTE BLACK

HARDWARE - KU60

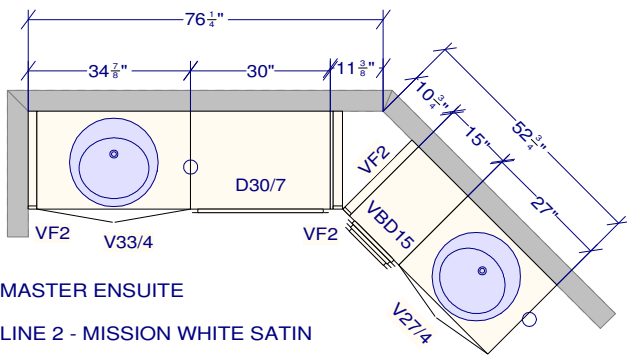
STANDARD WHITE INTERIOR

SOFT CLOSING DRAWERS

SOFT CLOSING DOORS

2 PCS - 5/8" KICK - FIN. BOTH ENDS

2 PCS - FLAT MOULDING



MASTER ENSUITE

LINE 2 - MISSION WHITE SATIN

HARDWARE - HU130 DOORS / KU65 DRWRS

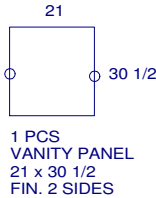
STANDARD WHITE INTERIOR

SOFT CLOSING DRAWERS

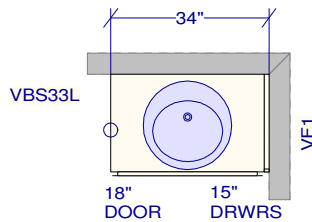
SOFT CLOSING DOORS

2 PCS - 5/8" KICK - FIN. BOTH ENDS

2 PCS - FLAT MOULDING



1 PCS
VANITY PANEL
21 x 30 1/2
FIN. 2 SIDES



BED 4 ENSUITE

LINE 3 - SOHO DOVE GREY MDF

HARDWARE - KU65

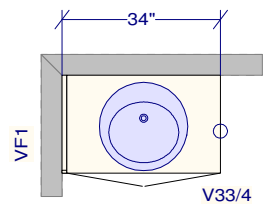
STANDARD WHITE INTERIOR

SOFT CLOSING DRAWERS

SOFT CLOSING DOORS

1 PCS - 5/8" KICK - FIN. BOTH ENDS

1 PCS - FLAT MOULDING



BASEMENT

LINE 3 - MISSION STORM

HARDWARE - HN33

STANDARD WHITE INTERIOR

SOFT CLOSING DRAWERS

SOFT CLOSING DOORS

1 PCS - 5/8" KICK - FIN. BOTH ENDS

1 PCS - FLAT MOULDING

All dimensions ,size designations
given are subject to verification on
job site and adjustment to fit job
conditions.

This is an original design and must
not be released or copied unless
applicable fee has been paid or job
order placed.

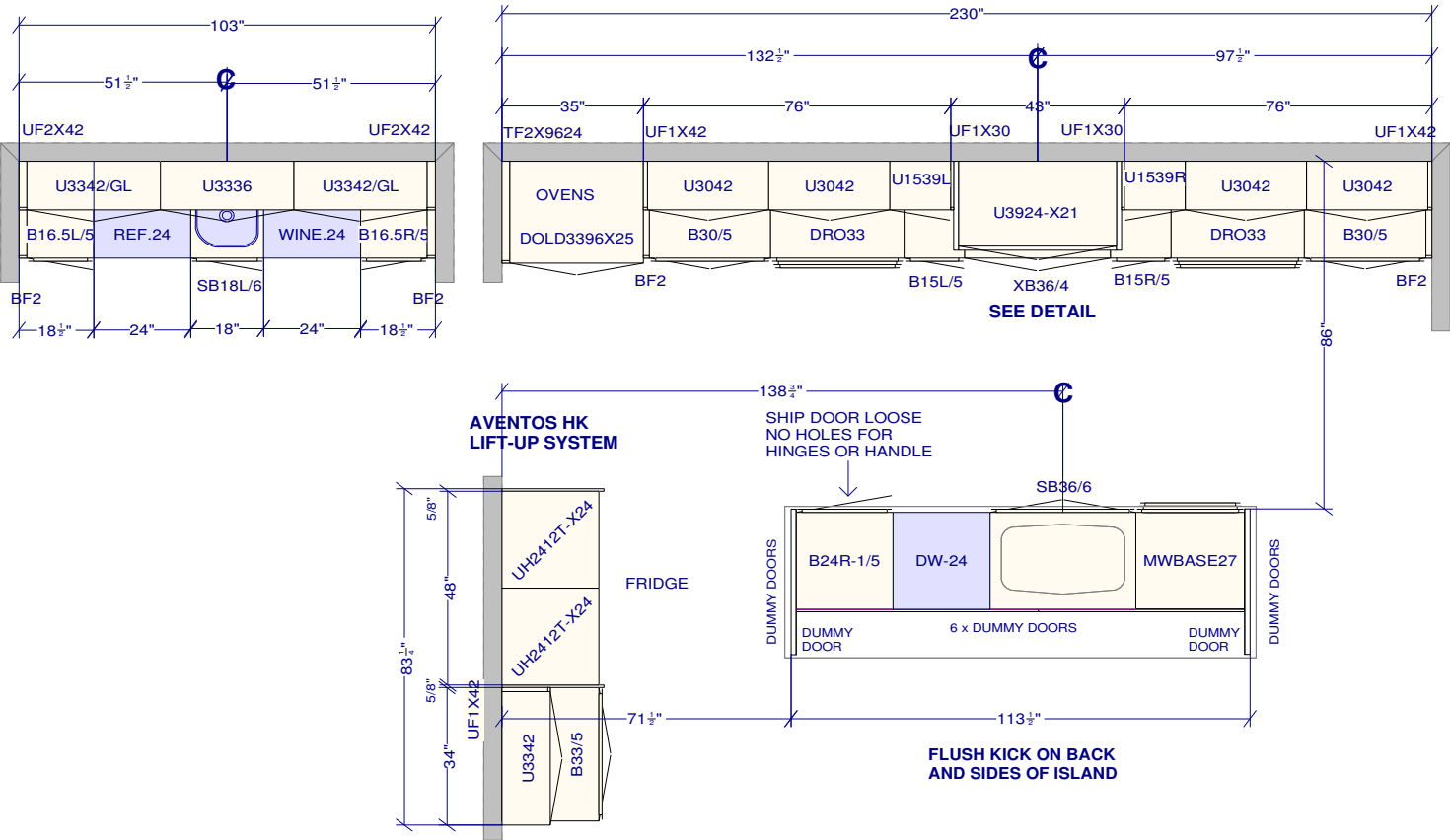
Designed: 2024-03-01
Printed: 2024-03-01

DCR PHOENIX HOMES
91 DIAMONDVIEW PH3

KITCHEN

AS-BUILT

FEB 21-24



All dimensions ,size designations given are subject to verification on job site and adjustment to fit job conditions.	This is an original design and must not be released or copied unless applicable fee has been paid or job order placed.	Designed: 2024-03-01 Printed: 2024-03-01	
		DCR 91 Diamondview3 Install.kit	Drawing #: 1 No Scale.