

SPECTRUM KITCHENS OTTAWA

DCR PHOENIX HOMES
56 WHITE TAIL RIDGE PH3

MODEL - RUTHERFORD

KITCHEN

MOUNTING HEIGHT - 96

LINE 1 - COMO WILLOW GREY

HARDWARE - KU60

STANDARD WHITE INTERIOR

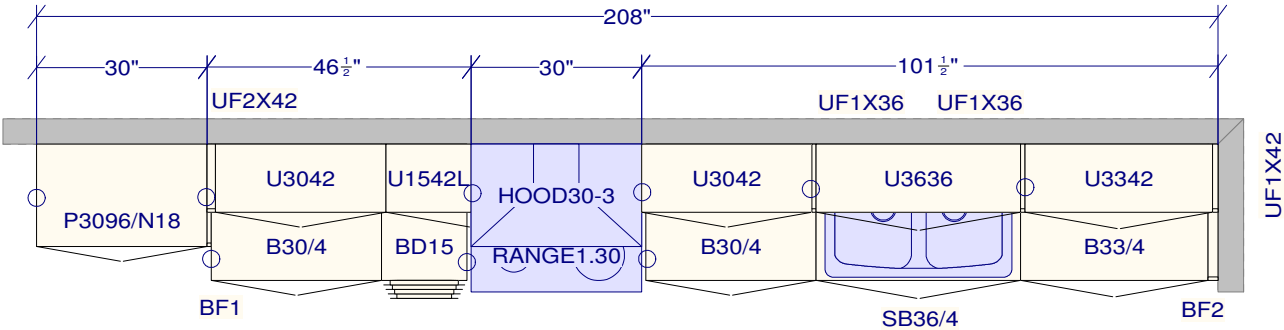
METAL DRAWER BOX

6 PCS - 5/8" KICK - FIN. BOTH ENDS

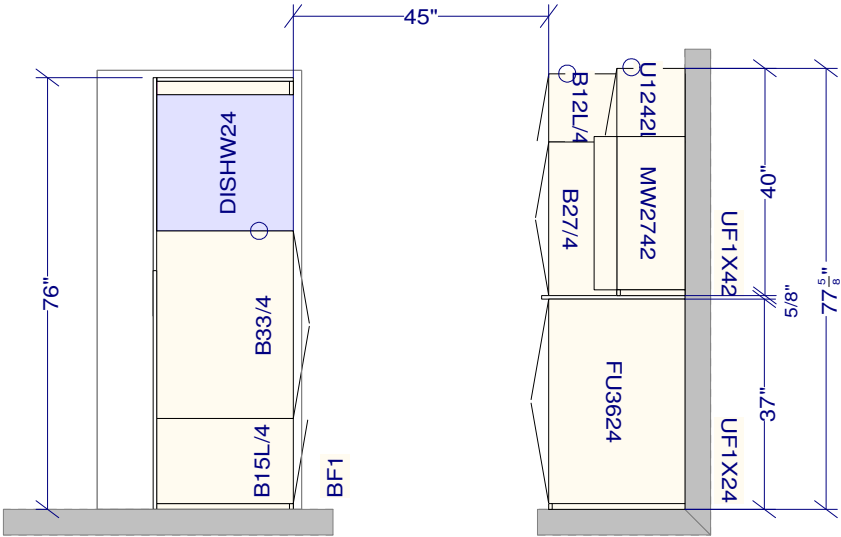
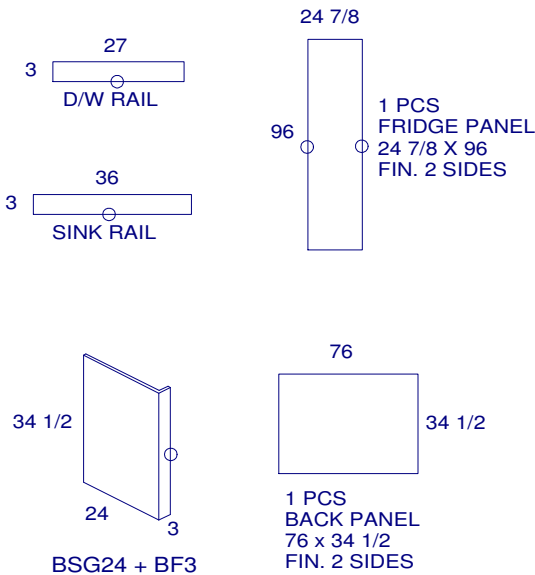
1 PCS - 90 DEG. CORNER MOULD

5 PCS - FLAT MOULDING

4 PCS - SHAKER CROWN



PANTRY DOORS
30"
31 3/4"
30"
4 1/4" KICK



All dimensions ,size designations
given are subject to verification on
job site and adjustment to fit job
conditions.

This is an original design and must
not be released or copied unless
applicable fee has been paid or job
order placed.

Designed: 2024-01-15
Printed: 2024-01-18

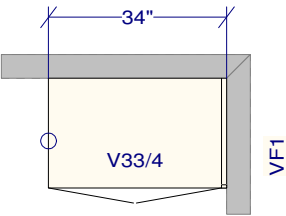
SPECTRUM KITCHENS OTTAWA

DCR PHOENIX HOMES
56 WHITE TAIL RIDGE PH3

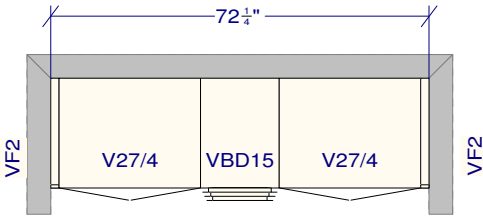
MODEL - RUTHERFORD

VANITIES / LAUNDRY

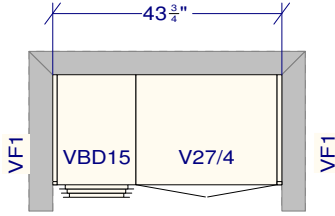
MOUNTING HEIGHT - 84



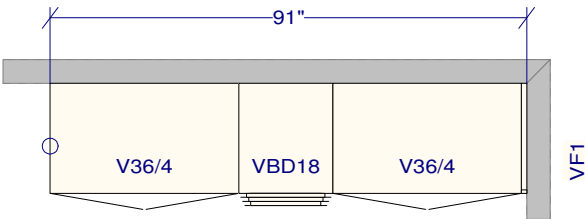
POWDER
LINE 2 - POLO TRUFFLE MAPLE
HARDWARE - HU60
STANDARD WHITE INTERIOR
METAL DRAWER BOX
1 PCS - 5/8" KICK - FIN. BOTH ENDS
1 PCS - FLAT MOULDING



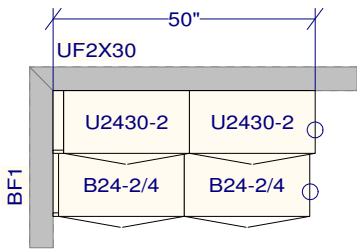
JACK AND JILL
LINE 2 - MISSION WILLOW GREY
HARDWARE - HU80
STANDARD WHITE INTERIOR
METAL DRAWER BOX
1 PCS - 5/8" KICK - FIN. BOTH ENDS
1 PCS - FLAT MOULDING



ENSUITE #2
LINE 1 - COMO STORM
HARDWARE - HU70
STANDARD WHITE INTERIOR
METAL DRAWER BOX
1 PCS - 5/8" KICK - FIN. BOTH ENDS
1 PCS - FLAT MOULDING



MASTER ENSUITE
LINE 2 - NEW YORK WHITE SATIN
HARDWARE - HU64
STANDARD WHITE INTERIOR
METAL DRAWER BOX
1 PCS - 5/8" KICK - FIN. BOTH ENDS
2 PCS - FLAT MOULDING



LAUNDRY
LINE 2 - MISSION WILLOW GREY
HARDWARE - HU64
STANDARD WHITE INTERIOR
METAL DRAWER BOX
1 PCS - 5/8" KICK - FIN. BOTH ENDS
1 PCS - FLAT MOULDING

All dimensions ,size designations
given are subject to verification on
job site and adjustment to fit job
conditions.

This is an original design and must
not be released or copied unless
applicable fee has been paid or job
order placed.

Designed: 2024-01-15
Printed: 2024-01-18