

SPECTRUM KITCHENS OTTAWA

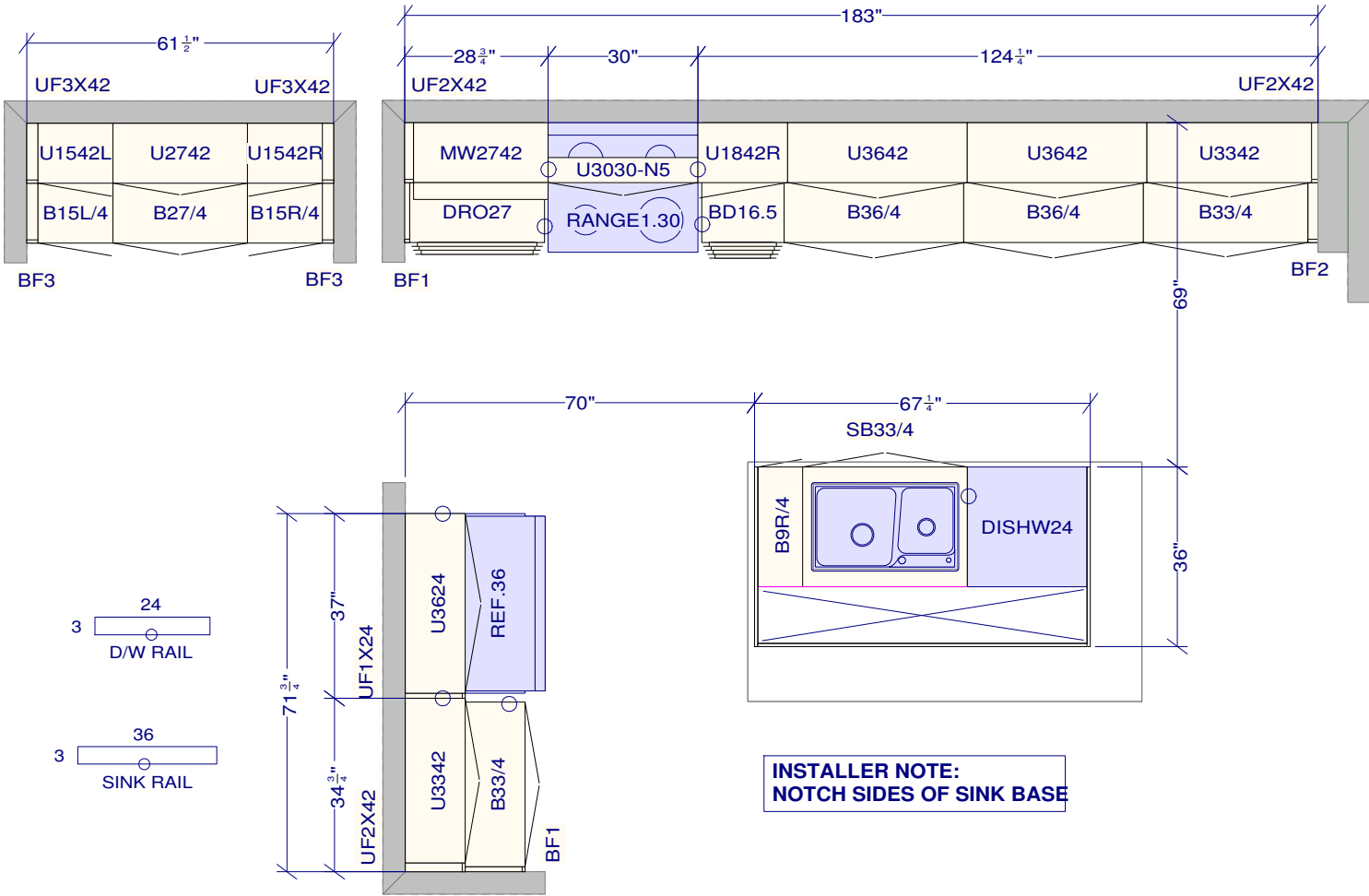
DCR PHOENIX HOMES  
312 PATHWAYS PH2

MODEL - MADISON

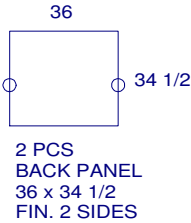
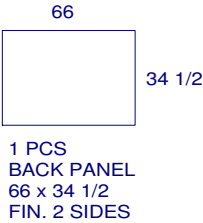
KITCHEN

MOUNTING HEIGHT - 96

- LINE 3 - MALIBU WHITE MDF
- HARDWARE - HU80
- STANDARD WHITE INTERIOR
- METAL DRAWER BOX
- 6 PCS - 5/8" KICK - FIN. BOTH ENDS
- 2 PCS - 90 DEG. CORNER MOULD
- 7 PCS - FLAT MOULDING



INSTALLER NOTE:  
NOTCH SIDES OF SINK BASE



All dimensions and size designations given are subject to verification on job site and adjustment to fit job conditions.

This is an original design and must not be released or copied unless applicable fee has been paid or job order placed.

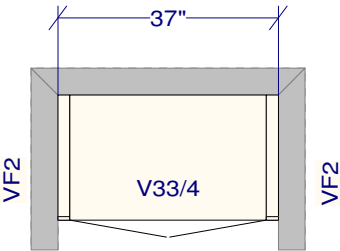
Designed: 2023-12-04  
Printed: 2023-12-13

SPECTRUM KITCHENS OTTAWA

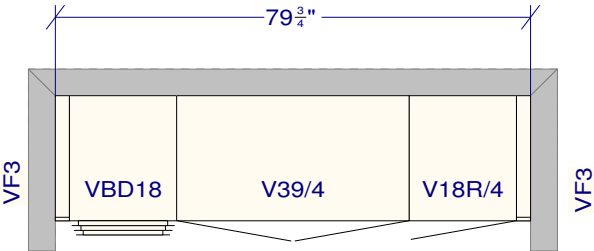
DCR PHOENIX HOMES  
312 PATHWAYS PH2

MODEL - MADISON

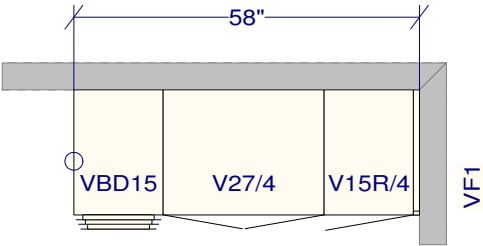
VANITIES



- POWDER
- LINE 2 - VERMONT BISCUIT
- HARDWARE - HU60
- STANDARD WHITE INTERIOR
- METAL DRAWER BOX
- 1 PCS - 5/8" KICK - FIN. BOTH ENDS
- 1 PCS - FLAT MOULDING



- MAIN BATH
- LINE 2 - MISSION TUXEDO
- HARDWARE - HU120
- STANDARD WHITE INTERIOR
- METAL DRAWER BOX
- 1 PCS - 5/8" KICK - FIN. BOTH ENDS
- 1 PCS - FLAT MOULDING



- ENSUITE
- LINE 2 - MISSION TUXEDO
- HARDWARE - HU60
- STANDARD WHITE INTERIOR
- METAL DRAWER BOX
- 1 PCS - 5/8" KICK - FIN. BOTH ENDS
- 1 PCS - FLAT MOULDING

All dimensions ,size designations  
given are subject to verification on  
job site and adjustment to fit job  
conditions.

This is an original design and must  
not be released or copied unless  
applicable fee has been paid or job  
order placed.

Designed: 2023-12-04  
Printed: 2023-12-13