

SPECTRUM KITCHENS OTTAWA

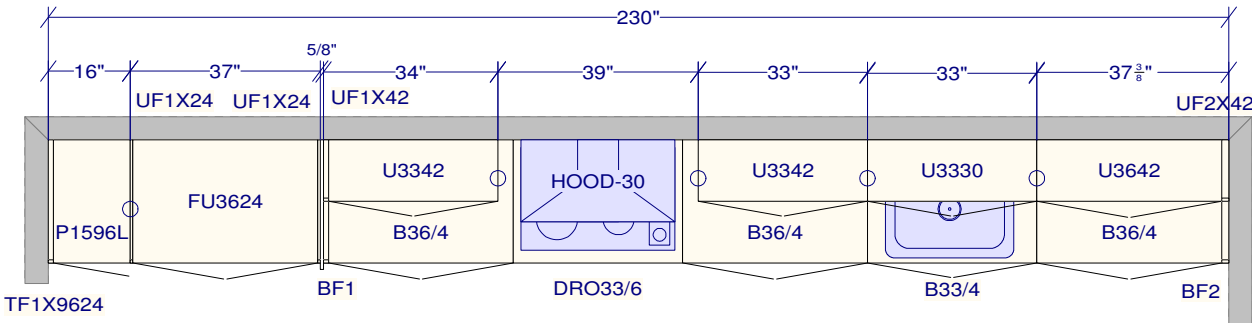
DCR PHOENIX HOMES
364 PATHWAYS PH2

MODEL - NEWINGTON

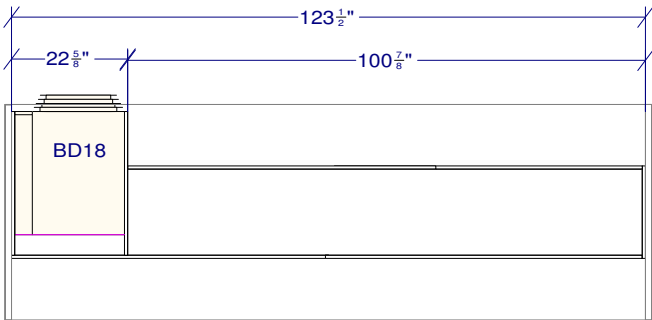
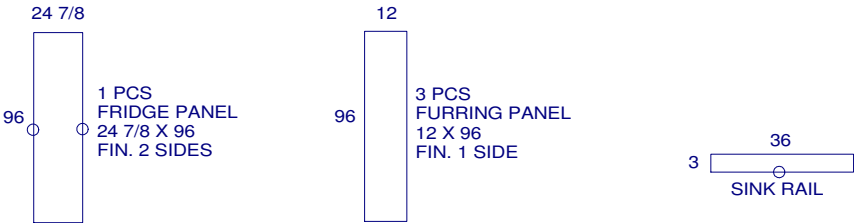
KITCHEN

MOUNTING HEIGHT - 96

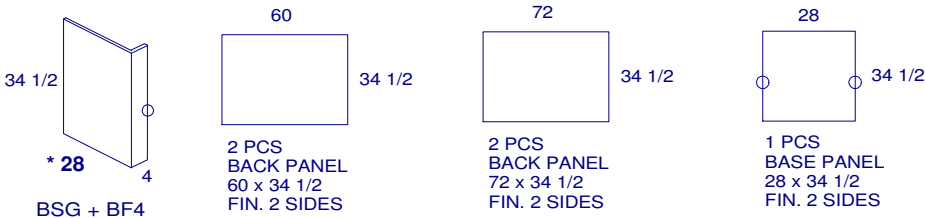
- KITCHEN
- LINE 3 - CADIZ COCONUT WHITE
- HARDWARE - NO HOLES
- STANDARD WHITE INTERIOR
- METAL DRAWER BOX
- 5 PCS - 5/8" KICK - FIN. BOTH ENDS
- 2 PCS - 90 DEG. CORNER MOULD
- 1 PCS - T-MOULD
- 4 PCS - FLAT MOULDING



PANTRY DOORS
24"
37 3/4"
30"
4 1/4" KICK



- ISLAND
- LINE 3 - CADIZ DOVE GREY
- HARDWARE - NO HOLES
- STANDARD WHITE INTERIOR
- METAL DRAWER BOX
- 4 PCS - 5/8" KICK - FIN. BOTH ENDS
- 2 PCS - T-MOULD
- 4 PCS - FLAT MOULDING



SHIP LOOSE
28 PCS - HU66 HANDLES

All dimensions ,size designations given are subject to verification on job site and adjustment to fit job conditions.	This is an original design and must not be released or copied unless applicable fee has been paid or job order placed.	Designed: 2023-12-05 Printed: 2023-12-13	
		Drawing #:	No Scale.

SPECTRUM KITCHENS OTTAWA

DCR PHOENIX HOMES
364 PATHWAYS PH2

MODEL - NEWINGTON

SPICE KITCHEN

MOUNTING HEIGHT - 96

SPICE KITCHEN

LINE 3 - CADIZ COCONUT WHITE

HARDWARE - NO HOLES

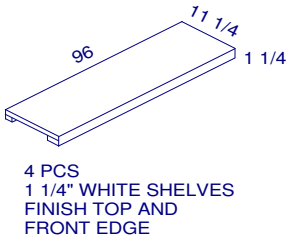
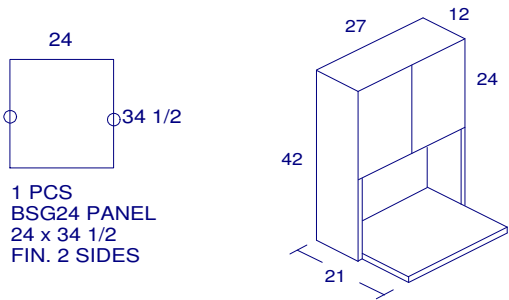
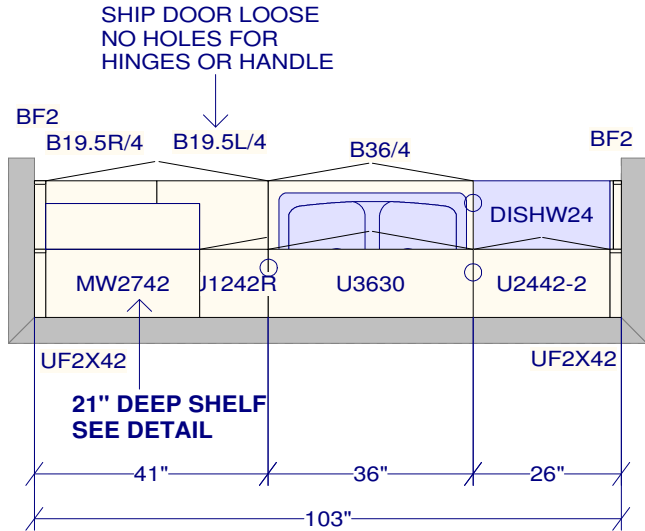
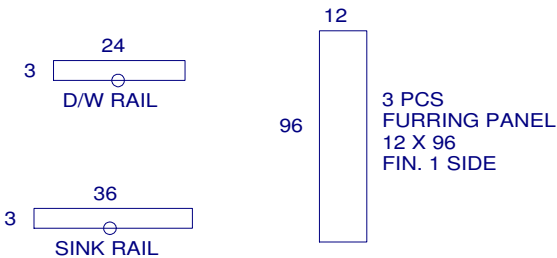
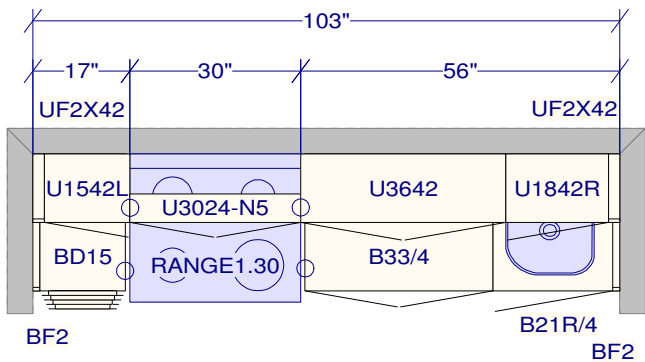
STANDARD WHITE INTERIOR

METAL DRAWER BOX

4 PCS - 5/8" KICK - FIN. BOTH ENDS

3 PCS - FLAT MOULDING

SHIP LOOSE
24 PCS - HU60 HANDLES



All dimensions ,size designations given are subject to verification on job site and adjustment to fit job conditions.

This is an original design and must not be released or copied unless applicable fee has been paid or job order placed.

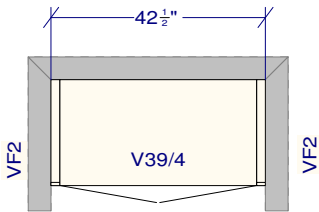
Designed: 2023-12-05
Printed: 2023-12-13

SPECTRUM KITCHENS OTTAWA

DCR PHOENIX HOMES
364 PATHWAYS PH2

MODEL - NEWINGTON

VANITIES



POWDER

LINE 2 - COMO QUEENSTON OAK

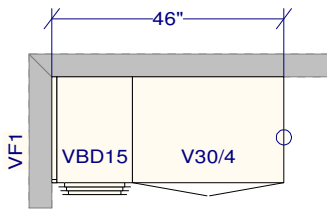
HARDWARE - HU66

STANDARD WHITE INTERIOR

METAL DRAWER BOX

1 PCS - 5/8" KICK - FIN. BOTH ENDS

1 PCS - FLAT MOULDING



IN-LAW SUITE

LINE 2 - COMO QUEENSTON OAK

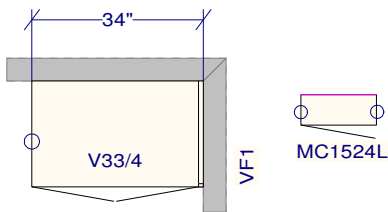
HARDWARE - HU66

STANDARD WHITE INTERIOR

METAL DRAWER BOX

1 PCS - 5/8" KICK - FIN. BOTH ENDS

1 PCS - FLAT MOULDING



BED 4 ENSUITE

LINE 2 - METRO WHITE

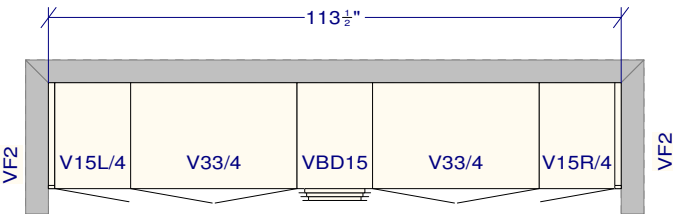
HARDWARE - HU64

STANDARD WHITE INTERIOR

METAL DRAWER BOX

1 PCS - 5/8" KICK - FIN. BOTH ENDS

1 PCS - FLAT MOULDING



JACK AND JILL

LINE 2 - COMO SOLSTICE K49

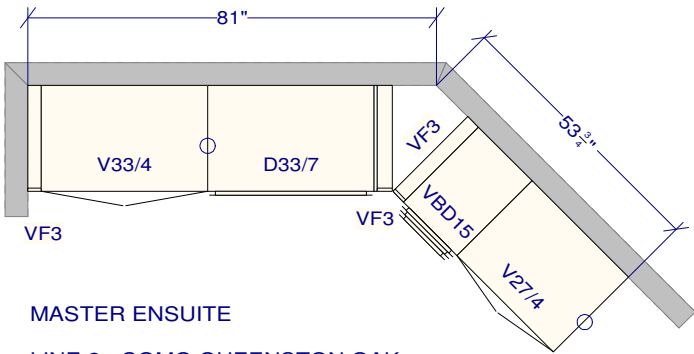
HARDWARE - HU66

STANDARD WHITE INTERIOR

METAL DRAWER BOX

2 PCS - 5/8" KICK - FIN. BOTH ENDS

2 PCS - FLAT MOULDING



MASTER ENSUITE

LINE 2 - COMO QUEENSTON OAK

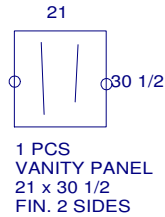
HARDWARE - HU66

STANDARD WHITE INTERIOR

METAL DRAWER BOX

2 PCS - 5/8" KICK - FIN. BOTH ENDS

2 PCS - FLAT MOULDING

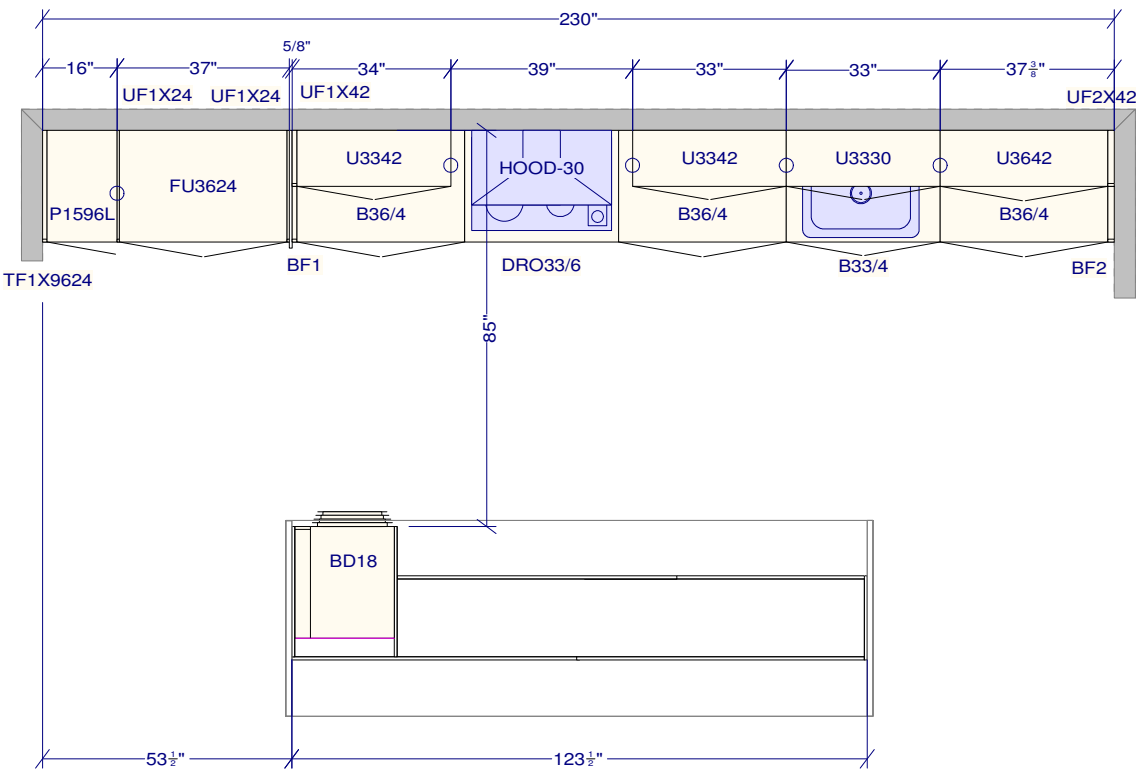


All dimensions ,size designations given are subject to verification on job site and adjustment to fit job conditions.

This is an original design and must not be released or copied unless applicable fee has been paid or job order placed.

Designed: 2023-12-05
Printed: 2023-12-13

DCR PHOENIX HOMES
364 PATHWAYS PH2



All dimensions ,size designations given are subject to verification on job site and adjustment to fit job conditions.

This is an original design and must not be released or copied unless applicable fee has been paid or job order placed.

Designed: 2023-12-12
Printed: 2023-12-13