

SPECTRUM KITCHENS OTTAWA

DCR PHOENIX HOMES
58 WHITE TAIL RIDGE PH3

MODEL - NEWINGTON

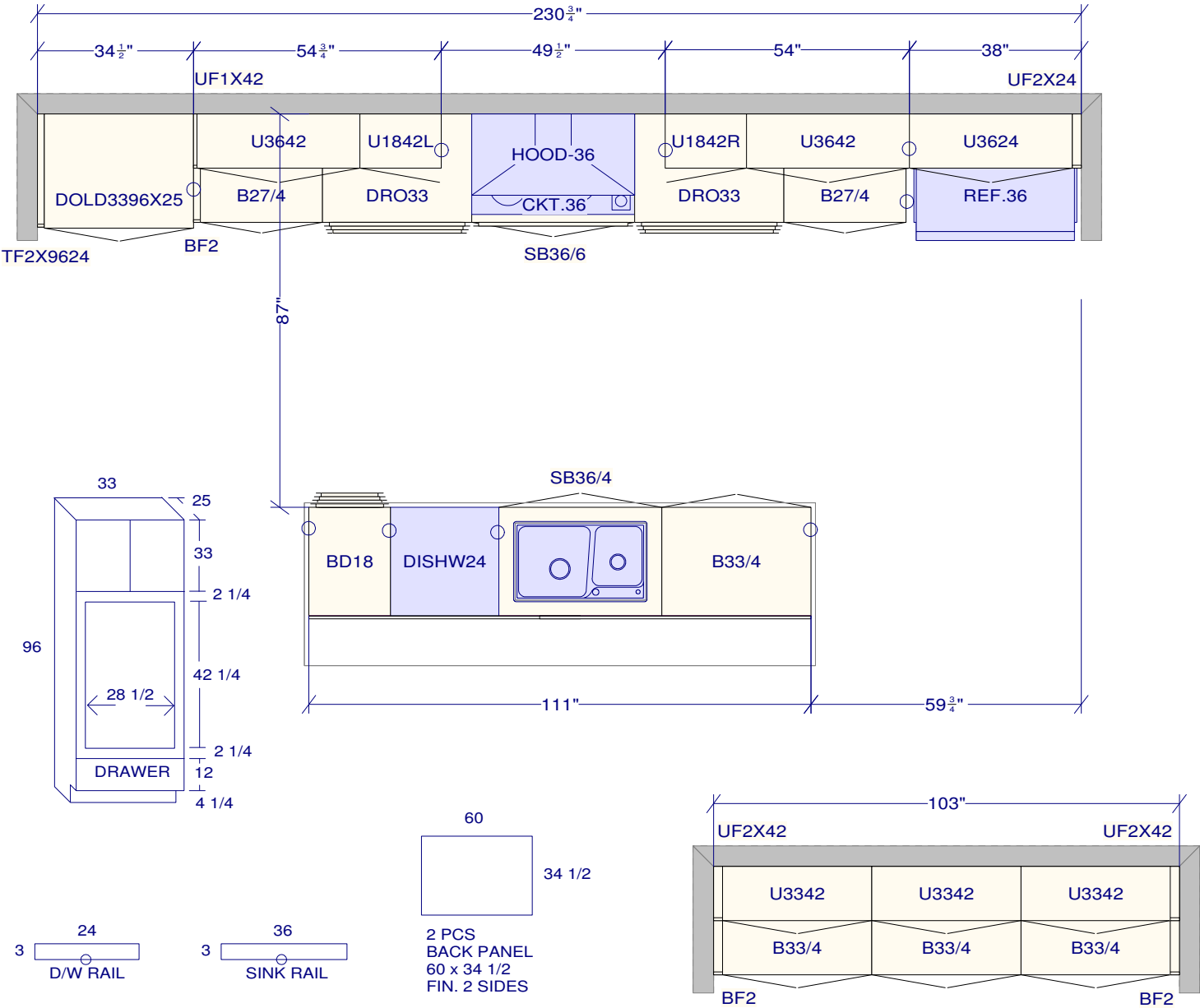
KITCHEN

MOUNTING HEIGHT - 96

LINE 2 - MISSION WHITE SATIN
HARDWARE - HU60

STANDARD WHITE INTERIOR
METAL DRAWER BOX

- 7 PCS - 5/8" KICK - FIN. BOTH ENDS
- 2 PCS - 90 DEG. CORNER MOULD
- 1 PCS - T-MOULD
- 7 PCS - FLAT MOULDING



All dimensions _size designations
given are subject to verification on
job site and adjustment to fit job
conditions.



This is an original design and must
not be released or copied unless
applicable fee has been paid or job
order placed.

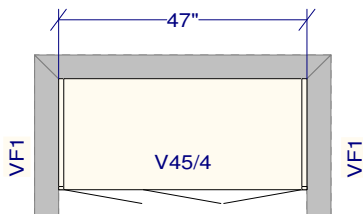
Designed: 2023-11-17
Printed: 2023-12-01

SPECTRUM KITCHENS OTTAWA

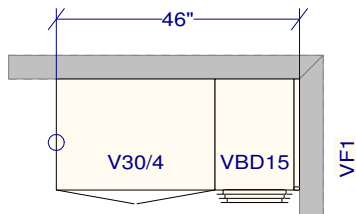
DCR PHOENIX HOMES
58 WHITE TAIL RIDGE PH3

MODEL - NEWINGTON

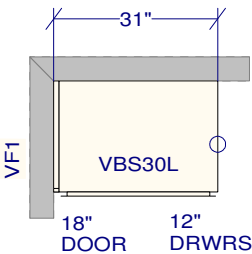
VANITIES



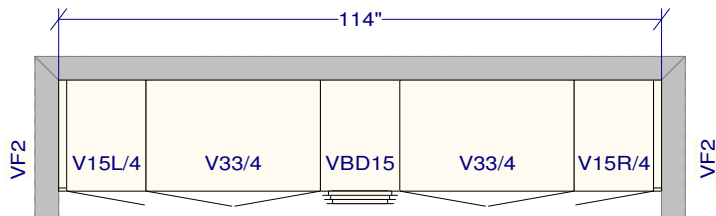
POWDER
LINE 3 - SOHO EBONY MDF
HARDWARE - HU60
STANDARD WHITE INTERIOR
METAL DRAWER BOX
1 PCS - 5/8" KICK - FIN. BOTH ENDS
1 PCS - FLAT MOULDING



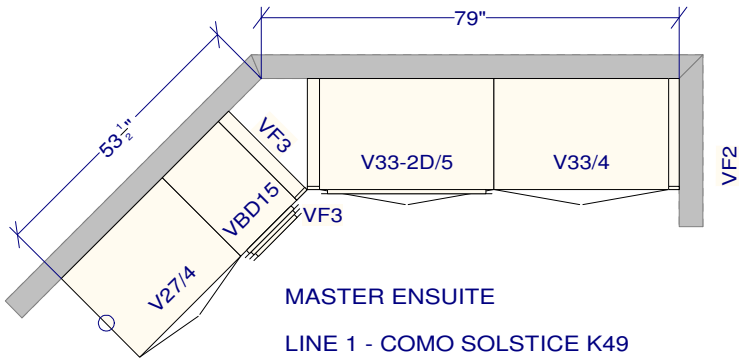
IN-LAW SUITE
LINE 3 - SOHO EBONY MDF
HARDWARE - HU60
STANDARD WHITE INTERIOR
METAL DRAWER BOX
1 PCS - 5/8" KICK - FIN. BOTH ENDS
1 PCS - FLAT MOULDING



ENSUITE #4
LINE 3 - SOHO EBONY MDF
HARDWARE - HU60
STANDARD WHITE INTERIOR
METAL DRAWER BOX
1 PCS - 5/8" KICK - FIN. BOTH ENDS
1 PCS - FLAT MOULDING



MAIN (JACK AND JILL)
LINE 3 - SOHO EBONY MDF
HARDWARE - HU60
STANDARD WHITE INTERIOR
METAL DRAWER BOX
2 PCS - 5/8" KICK - FIN. BOTH ENDS
2 PCS - FLAT MOULDING



MASTER ENSUITE
LINE 1 - COMO SOLSTICE K49
HARDWARE - KU60
STANDARD WHITE INTERIOR
METAL DRAWER BOX
2 PCS - 5/8" KICK - FIN. BOTH ENDS
2 PCS - FLAT MOULDING