

SPECTRUM KITCHENS OTTAWA

DCR PHOENIX HOMES
52 WHITE TAIL RIDGE PH3

MODEL - RUTHERFORD

KITCHEN

MOUNTING HEIGHT - 84

LINE 2 - MISSION WHITE SATIN

HARDWARE - HU64

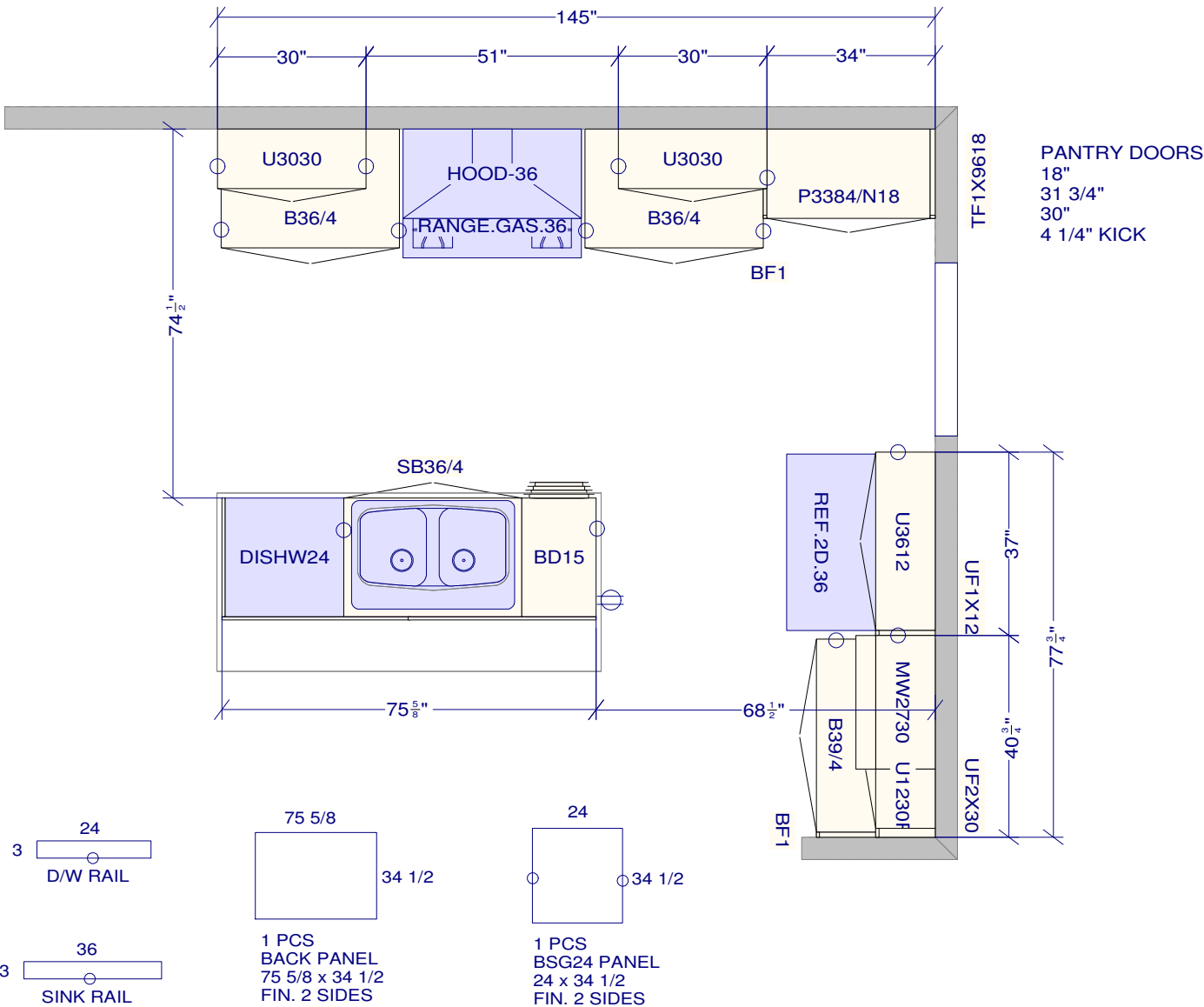
STANDARD WHITE INTERIOR

METAL DRAWER BOX

6 PCS - 5/8" KICK - FIN. BOTH ENDS

2 PCS - 90 DEG. CORNER MOULD

6 PCS - FLAT MOULDING



All dimensions size designations given are subject to verification on job site and adjustment to fit job conditions.



This is an original design and must not be released or copied unless applicable fee has been paid or job order placed.

Designed: 2023-10-31
Printed: 2023-11-09

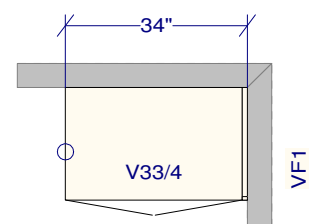
SPECTRUM KITCHENS OTTAWA

DCR PHOENIX HOMES
52 WHITE TAIL RIDGE PH3

MODEL - RUTHERFORD

VANITIES / LAUNDRY

MOUNTING HEIGHT - 84



POWDER

LINE 1 - COMO SOLSTICE K49

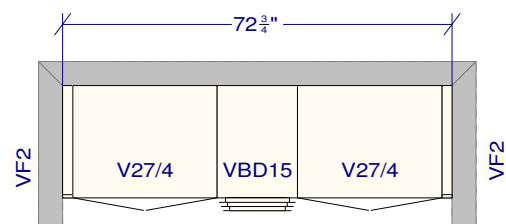
HARDWARE - HU64

STANDARD WHITE INTERIOR

METAL DRAWER BOX

1 PCS - 5/8" KICK - FIN. BOTH ENDS

1 PCS - FLAT MOULDING



JACK AND JILL

LINE 2 - MISSION WHITE SATIN

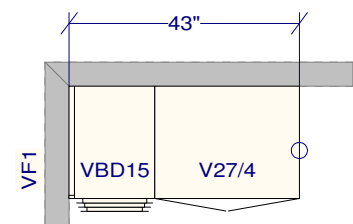
HARDWARE - HU64

STANDARD WHITE INTERIOR

METAL DRAWER BOX

1 PCS - 5/8" KICK - FIN. BOTH ENDS

1 PCS - FLAT MOULDING



ENSUITE #2

LINE 2 - MISSION WHITE SATIN

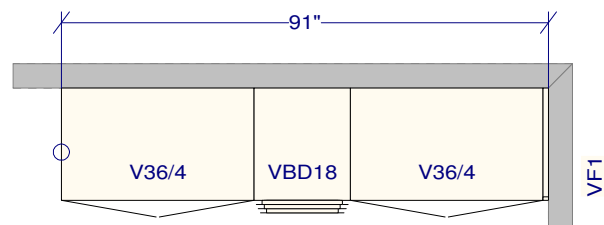
HARDWARE - HU64

STANDARD WHITE INTERIOR

METAL DRAWER BOX

1 PCS - 5/8" KICK - FIN. BOTH ENDS

1 PCS - FLAT MOULDING



MASTER ENSUITE

LINE 2 - MISSION WHITE SATIN

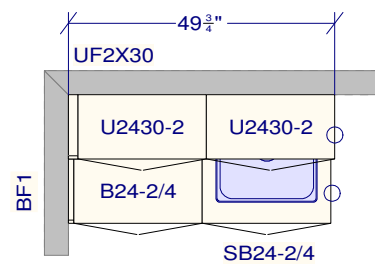
HARDWARE - HU64

STANDARD WHITE INTERIOR

METAL DRAWER BOX

2 PCS - 5/8" KICK - FIN. BOTH ENDS

2 PCS - FLAT MOULDING



LAUNDRY

LINE 2 - MISSION WHITE SATIN

HARDWARE - HU64

STANDARD WHITE INTERIOR

METAL DRAWER BOX

1 PCS - 5/8" KICK - FIN. BOTH ENDS

1 PCS - FLAT MOULDING

All dimensions _size designations given are subject to verification on job site and adjustment to fit job conditions.



This is an original design and must not be released or copied unless applicable fee has been paid or job order placed.

Designed: 2023-10-31
Printed: 2023-11-09